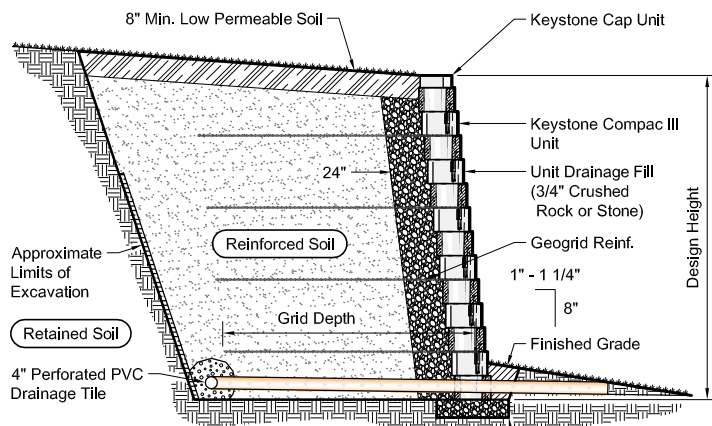


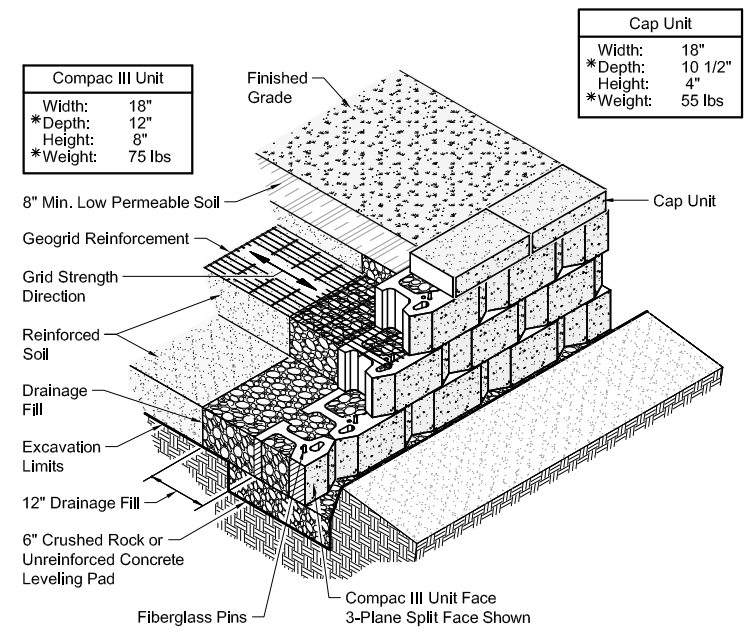
**Note:**  
When site conditions require, wrap drainage tile in 3/4\"/>

**Typical Reinforced Wall Section**  
Compac III Unit - Near Vertical Setback

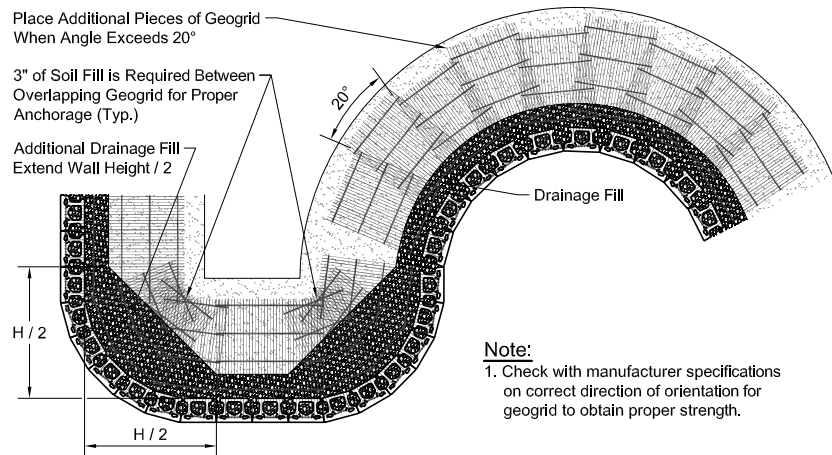


**Note:**  
When site conditions require, wrap drainage tile in 3/4\"/>

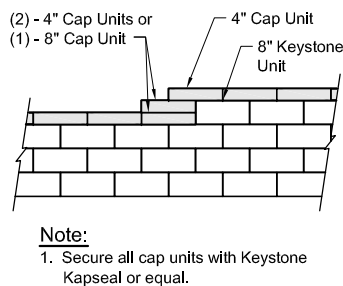
**Typical Reinforced Wall Section**  
Compac III Unit - 1\"/>



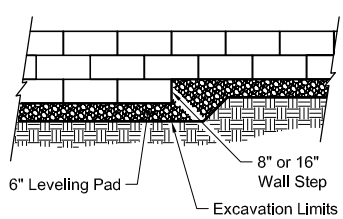
**Compac III Unit / Wall Isometric Cut Section View**  
\*Dimensions & Weight May Vary by Region



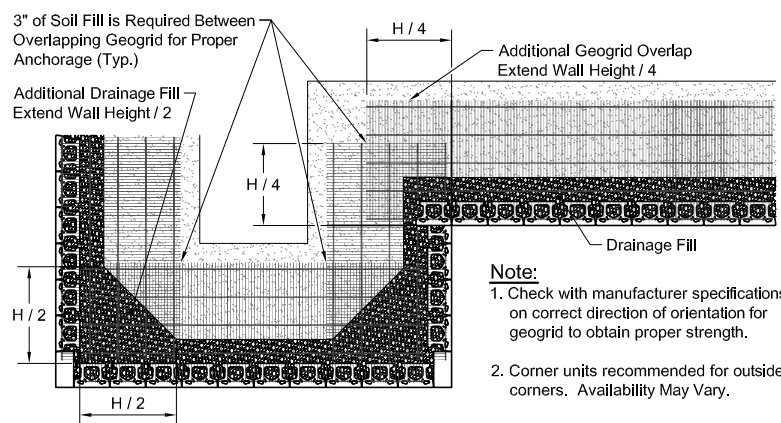
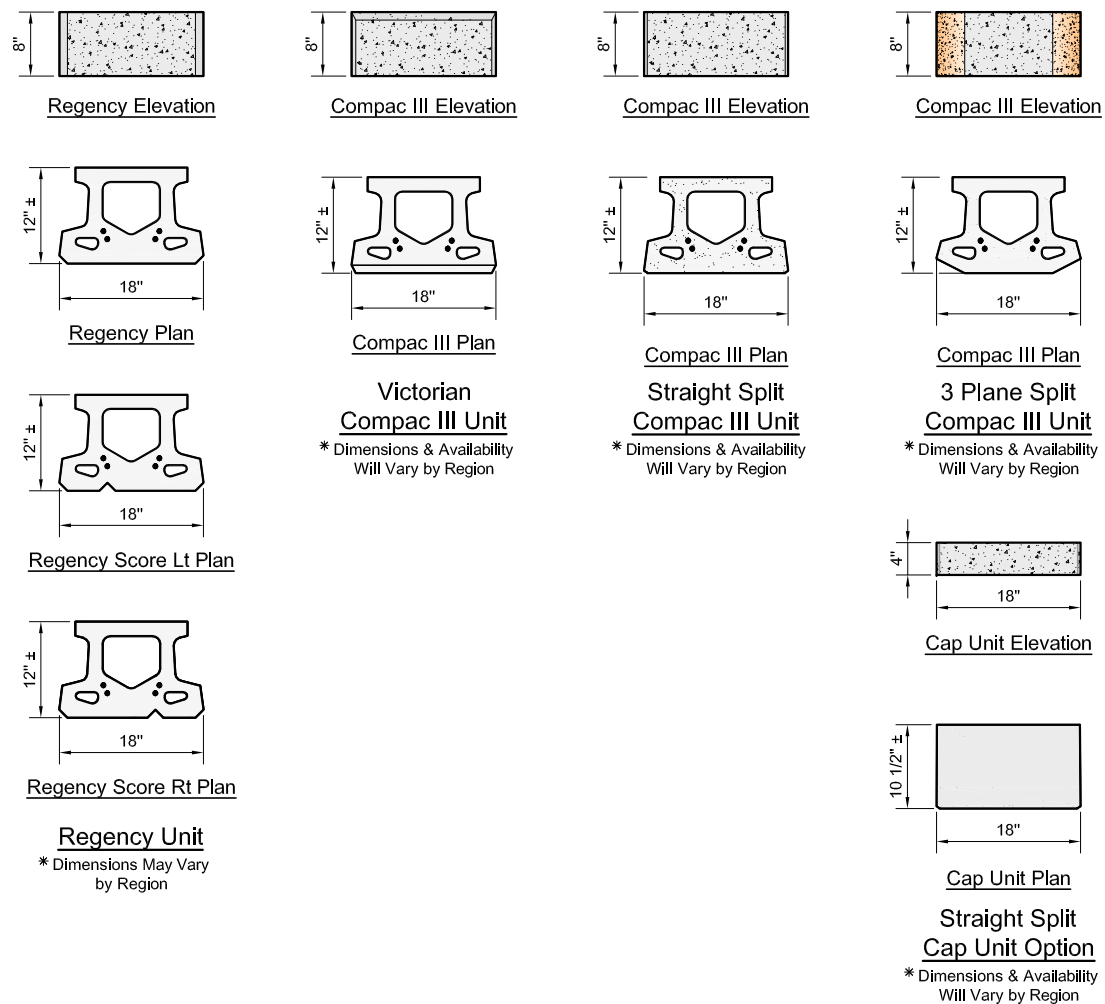
**Geogrid Installation on Curves**



**Top of Wall Steps**



**Leveling Pad Detail**



**Geogrid Installation at Corners**

Copyright 2017 Keystone Retaining Wall Systems

Design is for internal stability of the KEYSTONE wall structure only. External stability, including but not limited to foundation and slope stability is the responsibility of the Owner. The design is based on the assumption that the materials within the retained mass, methods of construction, and quality of materials conform to KEYSTONE's specification for this project.

This drawing is being furnished for this specific project only. Any party accepting this document does so in confidence and agrees that it shall not be duplicated in whole or in part, nor disclosed to others without the consent of Keystone Retaining Wall Systems, Inc.

No.	Date	Revision	By

**KEYSTONE**  
RETAINING WALL SYSTEMS  
A CONTECH COMPANY

4444 W 78th Street  
Minneapolis, MN 55435  
952-897-1040

Designed By: RKM	Title: <b>Compac III Unit - Details</b>	Date:
Checked By: CDM	Project: <b>Keystone Retaining Wall Systems Typical Wall Details</b>	Project No:
Scale: No Scale		Drawing No: