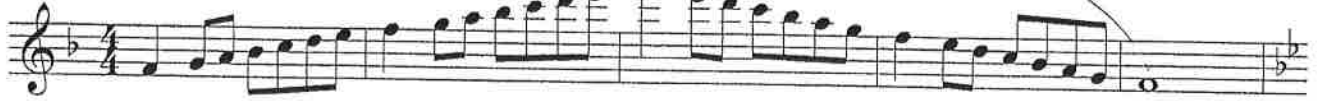


Region 10 Middle School Scales

Flute

Concert F Major



Concert Bb Major



Concert Eb Major



Concert Ab Major



Concert Db Major



Concert C Major



G Major



Chromatic



Region 10 Middle School Scales

Oboe

Concert F



Musical notation for the Concert F scale in 4/4 time. The scale is written on a single staff in treble clef with a key signature of one flat (Bb). It consists of an ascending eighth-note scale followed by a descending eighth-note scale, with a fermata over the final F note.

Concert Bb



Musical notation for the Concert Bb scale in 4/4 time. The scale is written on a single staff in treble clef with a key signature of two flats (Bb, Eb). It consists of an ascending eighth-note scale followed by a descending eighth-note scale, with a fermata over the final Bb note.

Concert Eb



Musical notation for the Concert Eb scale in 4/4 time. The scale is written on a single staff in treble clef with a key signature of three flats (Bb, Eb, Ab). It consists of an ascending eighth-note scale followed by a descending eighth-note scale, with a fermata over the final Eb note.

Concert Ab



Musical notation for the Concert Ab scale in 4/4 time. The scale is written on a single staff in treble clef with a key signature of four flats (Bb, Eb, Ab, Db). It consists of an ascending eighth-note scale followed by a descending eighth-note scale, with a fermata over the final Ab note.

Concert Db



Musical notation for the Concert Db scale in 4/4 time. The scale is written on a single staff in treble clef with a key signature of five flats (Bb, Eb, Ab, Db, Gb). It consists of an ascending eighth-note scale followed by a descending eighth-note scale, with a fermata over the final Db note.

Concert C



Musical notation for the Concert C scale in 4/4 time. The scale is written on a single staff in treble clef with a key signature of no sharps or flats (C). It consists of an ascending eighth-note scale followed by a descending eighth-note scale, with a fermata over the final C note.

Concert G



Musical notation for the Concert G scale in 4/4 time. The scale is written on a single staff in treble clef with a key signature of one sharp (F#). It consists of an ascending eighth-note scale followed by a descending eighth-note scale, with a fermata over the final G note.

Chromatic



Musical notation for the Chromatic scale in 4/4 time. The scale is written on two staves in treble clef with a key signature of no sharps or flats (C). The first staff shows the ascending eighth-note scale, and the second staff shows the descending eighth-note scale, with a fermata over the final C note.

Region 10 Middle School Scales

Bassoon

Concert F Major



Musical notation for the Concert F Major scale in bass clef, 4/4 time. The scale starts on F2 and ends on F3. It consists of two lines of music. The first line contains the first six notes: F, G, A, Bb, C, D. The second line contains the last six notes: E, F, G, A, Bb, C, followed by a whole rest on F.

Concert Bb Major



Musical notation for the Concert Bb Major scale in bass clef, 4/4 time. The scale starts on Bb2 and ends on Bb3. It consists of two lines of music. The first line contains the first six notes: Bb, C, D, Eb, F, G. The second line contains the last six notes: A, Bb, C, D, Eb, F, followed by a whole rest on Bb.

Concert Eb Major



Musical notation for the Concert Eb Major scale in bass clef, 4/4 time. The scale starts on Eb2 and ends on Eb3. It consists of two lines of music. The first line contains the first six notes: Eb, F, G, Ab, Bb, C. The second line contains the last six notes: D, Eb, F, G, Ab, Bb, followed by a whole rest on Eb.

Concert Ab Major




Musical notation for the Concert Ab Major scale in bass clef, 4/4 time. The scale starts on Ab2 and ends on Ab3. It consists of two lines of music. The first line contains the first six notes: Ab, Bb, C, Db, Eb, F. The second line contains the last six notes: G, Ab, Bb, C, Db, Eb, followed by a whole rest on Ab.

Concert Db Major



Musical notation for the Concert Db Major scale in bass clef, 4/4 time. The scale starts on Db2 and ends on Db3. It consists of two lines of music. The first line contains the first six notes: Db, Eb, F, G, Ab, Bb. The second line contains the last six notes: C, Db, Eb, F, G, Ab, followed by a whole rest on Db.

Concert C Major



Musical notation for the Concert C Major scale in bass clef, 4/4 time. The scale starts on C2 and ends on C3. It consists of two lines of music. The first line contains the first six notes: C, D, E, F, G, A. The second line contains the last six notes: B, C, D, E, F, G, followed by a whole rest on C.

Concert G Major



Musical notation for the Concert G Major scale in bass clef, 4/4 time. The scale starts on G2 and ends on G3. It consists of two lines of music. The first line contains the first six notes: G, A, B, C, D, E. The second line contains the last six notes: F#, G, A, B, C, D, followed by a whole rest on G.

Chromatic



Musical notation for the Chromatic scale in bass clef, 4/4 time. The scale starts on C2 and ends on C3. It consists of two lines of music. The first line contains the first six notes of the ascending scale: C, C#, D, D#, E, E#. The second line contains the last six notes of the descending scale: E, Eb, D, Db, C, Cb, followed by a whole rest on C.

Region 10 Middle School Scales

Clarinet in B \flat

Concert F Major



Musical notation for the Concert F Major scale, written in treble clef with a key signature of one sharp (F#) and a 4/4 time signature. The scale consists of eight measures: F4 (quarter), G4 (quarter), A4 (quarter), B4 (quarter), C5 (quarter), B4-A4 (beamed eighth notes), G4-F4 (beamed eighth notes), and F4 (half). A slur covers the last six notes, and a fermata is placed over the final F4.

Concert B \flat Major



Musical notation for the Concert B \flat Major scale, written in treble clef with a key signature of two flats (B \flat , E \flat) and a 4/4 time signature. The scale consists of eight measures: B \flat 4 (quarter), C5 (quarter), D5 (quarter), E5 (quarter), F5 (quarter), E5-D5 (beamed eighth notes), C5-B \flat 4 (beamed eighth notes), and B \flat 4 (half). A slur covers the last six notes, and a fermata is placed over the final B \flat 4.

Concert E \flat Major



Musical notation for the Concert E \flat Major scale, written in treble clef with a key signature of three flats (B \flat , E \flat , A \flat) and a 4/4 time signature. The scale consists of eight measures: E \flat 4 (quarter), F5 (quarter), G5 (quarter), A5 (quarter), B5 (quarter), A5-G5 (beamed eighth notes), F5-E \flat 4 (beamed eighth notes), and E \flat 4 (half). A slur covers the last six notes, and a fermata is placed over the final E \flat 4.

Concert A \flat Major



Musical notation for the Concert A \flat Major scale, written in treble clef with a key signature of three flats (B \flat , E \flat , A \flat) and a 4/4 time signature. The scale consists of eight measures: A \flat 4 (quarter), B5 (quarter), C5 (quarter), D5 (quarter), E5 (quarter), D5-C5 (beamed eighth notes), B5-A \flat 4 (beamed eighth notes), and A \flat 4 (half). A slur covers the last six notes, and a fermata is placed over the final A \flat 4.

Concert D \flat Major



Musical notation for the Concert D \flat Major scale, written in treble clef with a key signature of four flats (B \flat , E \flat , A \flat , D \flat) and a 4/4 time signature. The scale consists of eight measures: D \flat 4 (quarter), E5 (quarter), F5 (quarter), G5 (quarter), A5 (quarter), G5-F5 (beamed eighth notes), E5-D \flat 4 (beamed eighth notes), and D \flat 4 (half). A slur covers the last six notes, and a fermata is placed over the final D \flat 4.

Concert C Major



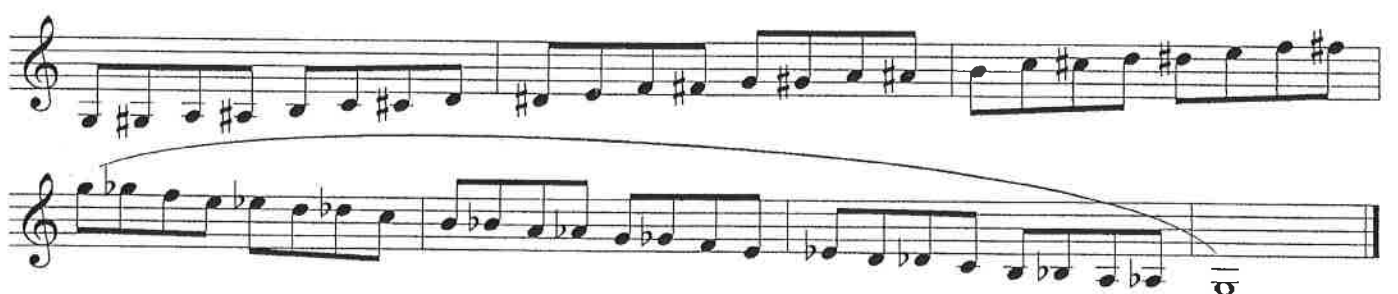
Musical notation for the Concert C Major scale, written in treble clef with a key signature of two sharps (F#, C#) and a 4/4 time signature. The scale consists of eight measures: C4 (quarter), D4 (quarter), E4 (quarter), F#4 (quarter), G4 (quarter), F#4-E4 (beamed eighth notes), D4-C4 (beamed eighth notes), and C4 (half). A slur covers the last six notes, and a fermata is placed over the final C4.

Concert G Major



Musical notation for the Concert G Major scale, written in treble clef with a key signature of one sharp (F#) and a 4/4 time signature. The scale consists of eight measures: G4 (quarter), A4 (quarter), B4 (quarter), C5 (quarter), D5 (quarter), C5-B4 (beamed eighth notes), A4-G4 (beamed eighth notes), and G4 (half). A slur covers the last six notes, and a fermata is placed over the final G4.

Chromatic



Musical notation for the Chromatic scale, written in treble clef with a 4/4 time signature. The scale consists of two lines of eight measures each. The first line is an ascending chromatic scale: C4 (quarter), C#4 (quarter), D4 (quarter), D#4 (quarter), E4 (quarter), E#4 (quarter), F4 (quarter), F#4 (quarter). The second line is a descending chromatic scale: F#4 (quarter), F4 (quarter), E#4 (quarter), E4 (quarter), D#4 (quarter), D4 (quarter), C#4 (quarter), C4 (quarter). A slur covers the entire two-line scale, and a fermata is placed over the final C4.

Region 10 Middle School Scales

Bass Clarinet

Concert F Major



Musical notation for the Concert F Major scale, written in treble clef with a key signature of one sharp (F#) and a 4/4 time signature. The scale consists of two lines of music. The first line contains the ascending scale: F4, G4, A4, B4, C5, D5, E5, F5. The second line contains the descending scale: E4, D4, C4, B3, A3, G3, F3. A slur covers the entire scale, and a fermata is placed over the final F3 note.

Concert Bb Major



Musical notation for the Concert Bb Major scale, written in treble clef with a key signature of two flats (Bb, Eb) and a 4/4 time signature. The scale consists of two lines of music. The first line contains the ascending scale: Bb4, C5, D5, Eb5, F5, G5, Ab5, Bb5. The second line contains the descending scale: Ab4, G4, F4, Eb4, D4, C4, Bb3. A slur covers the entire scale, and a fermata is placed over the final Bb3 note.

Concert Eb Major



Musical notation for the Concert Eb Major scale, written in treble clef with a key signature of three flats (Eb, Bb, Fb) and a 4/4 time signature. The scale consists of two lines of music. The first line contains the ascending scale: Eb4, F4, G4, Ab4, Bb4, C5, D5, Eb5. The second line contains the descending scale: D4, C4, Bb3, Ab3, G3, F3, Eb3. A slur covers the entire scale, and a fermata is placed over the final Eb3 note.

Concert Ab Major



Musical notation for the Concert Ab Major scale, written in treble clef with a key signature of four flats (Ab, Bb, Cb, Fb) and a 4/4 time signature. The scale consists of two lines of music. The first line contains the ascending scale: Ab4, Bb4, C5, D5, Eb5, F5, G5, Ab5. The second line contains the descending scale: G4, F4, Eb4, D4, C4, Bb3, Ab3. A slur covers the entire scale, and a fermata is placed over the final Ab3 note.

Concert Db Major



Musical notation for the Concert Db Major scale, written in treble clef with a key signature of five flats (Db, Eb, Fb, Gb, Cb) and a 4/4 time signature. The scale consists of two lines of music. The first line contains the ascending scale: Db4, Eb4, F4, Gb4, Ab4, Bb4, C5, Db5. The second line contains the descending scale: C4, Bb3, Ab3, Gb3, F3, Eb3, Db3. A slur covers the entire scale, and a fermata is placed over the final Db3 note.

Concert C Major



Musical notation for the Concert C Major scale, written in treble clef with a key signature of no sharps or flats and a 4/4 time signature. The scale consists of two lines of music. The first line contains the ascending scale: C4, D4, E4, F4, G4, A4, B4, C5. The second line contains the descending scale: B4, A4, G4, F4, E4, D4, C4. A slur covers the entire scale, and a fermata is placed over the final C4 note.

Concert G Major



Musical notation for the Concert G Major scale, written in treble clef with a key signature of one sharp (F#) and a 4/4 time signature. The scale consists of two lines of music. The first line contains the ascending scale: G4, A4, B4, C5, D5, E5, F#5, G5. The second line contains the descending scale: F#4, E4, D4, C4, B3, A3, G3. A slur covers the entire scale, and a fermata is placed over the final G3 note.

Chromatic



Musical notation for the Chromatic scale, written in treble clef with a key signature of no sharps or flats and a 4/4 time signature. The scale consists of two lines of music. The first line contains the ascending chromatic scale: C4, C#4, D4, D#4, E4, E#4, F4, F#4, G4, G#4, A4, A#4, B4, B#4, C5. The second line contains the descending chromatic scale: C5, B4, Bb4, Ab4, G4, Gb4, F4, Fb4, E4, Eb4, D4, Db4, C4, B3, Bb3, Ab3, G3, Gb3, F3, Fb3, E3, Eb3, D3, Db3, C3. A slur covers the entire scale, and a fermata is placed over the final C3 note.

Region 10 Middle School Scales

Alto/Bari Saxophone

Concert F Major



Musical notation for the Concert F Major scale, written in treble clef with a key signature of one sharp (F#) and a 4/4 time signature. The scale consists of eight measures: an ascending eighth-note scale, a descending eighth-note scale, and a final whole note F.

Concert Bb Major



Musical notation for the Concert Bb Major scale, written in treble clef with a key signature of two flats (Bb, Eb) and a 4/4 time signature. The scale consists of eight measures: an ascending eighth-note scale, a descending eighth-note scale, and a final whole note Bb.

Concert Eb Major



Musical notation for the Concert Eb Major scale, written in treble clef with a key signature of three flats (Eb, Ab, Db) and a 4/4 time signature. The scale consists of eight measures: an ascending eighth-note scale, a descending eighth-note scale, and a final whole note Eb.

Concert Ab Major



Musical notation for the Concert Ab Major scale, written in treble clef with a key signature of four flats (Ab, Bb, Cb, Db) and a 4/4 time signature. The scale consists of eight measures: an ascending eighth-note scale, a descending eighth-note scale, and a final whole note Ab.

Concert Db Major



Musical notation for the Concert Db Major scale, written in treble clef with a key signature of five flats (Db, Eb, Fb, Gb, Ab) and a 4/4 time signature. The scale consists of eight measures: an ascending eighth-note scale, a descending eighth-note scale, and a final whole note Db.

Concert C Major



Musical notation for the Concert C Major scale, written in treble clef with a key signature of no sharps or flats and a 4/4 time signature. The scale consists of eight measures: an ascending eighth-note scale, a descending eighth-note scale, and a final whole note C.

Concert G Major



Musical notation for the Concert G Major scale, written in treble clef with a key signature of one sharp (G#) and a 4/4 time signature. The scale consists of eight measures: an ascending eighth-note scale, a descending eighth-note scale, and a final whole note G.

Chromatic



Musical notation for the Chromatic scale, written in treble clef with a 4/4 time signature. The scale consists of two lines of eight measures each. The first line shows the ascending chromatic scale from C to C# to D to D# to E to F to F# to G. The second line shows the descending chromatic scale from G to F# to F to E to D# to D to C# to C.

Region 10 Middle School Scales

Tenor Sax.

Concert F Major



Concert Bb Major



Concert Eb Major



Concert Ab Major



Concert Db Major



Concert C Major



Concert G Major



Chromatic



Region 10 Middle School Scales

Trumpet/Baritone T.C.

Concert F Major

Musical notation for the Concert F Major scale, 4/4 time signature. The scale is written on a single staff in treble clef, starting on F4 and ending on F5. The notes are: F4, G4, A4, Bb4, B4, C5, D5, E5, F5. A slur covers the notes from G4 to F5.

Concert Bb Major

Musical notation for the Concert Bb Major scale, 4/4 time signature. The scale is written on a single staff in treble clef, starting on Bb4 and ending on Bb5. The notes are: Bb4, C5, D5, Eb5, E5, F5, G5, Ab5, Bb5. A slur covers the notes from C5 to Bb5.

Concert Eb Major

Musical notation for the Concert Eb Major scale, 4/4 time signature. The scale is written on a single staff in treble clef, starting on Eb4 and ending on Eb5. The notes are: Eb4, F4, G4, Ab4, A4, Bb4, C5, D5, Eb5. A slur covers the notes from F4 to Eb5.

Concert Ab Major

Musical notation for the Concert Ab Major scale, 4/4 time signature. The scale is written on a single staff in treble clef, starting on Ab4 and ending on Ab5. The notes are: Ab4, Bb4, C5, Db5, D5, Eb5, F5, G5, Ab5. A slur covers the notes from Bb4 to Ab5.

Concert Db Major

Musical notation for the Concert Db Major scale, 4/4 time signature. The scale is written on a single staff in treble clef, starting on Db4 and ending on Db5. The notes are: Db4, Eb4, F4, Gb4, G4, Ab4, Bb4, C5, Db5. A slur covers the notes from Eb4 to Db5.

Concert C Major

Musical notation for the Concert C Major scale, 4/4 time signature. The scale is written on a single staff in treble clef, starting on C4 and ending on C5. The notes are: C4, D4, E4, F4, G4, A4, B4, C5. A slur covers the notes from D4 to C5.

Concert G Major

Musical notation for the Concert G Major scale, 4/4 time signature. The scale is written on a single staff in treble clef, starting on G4 and ending on G5. The notes are: G4, A4, B4, C5, D5, E5, F5, G5. A slur covers the notes from A4 to G5.

Chromatic

Musical notation for the Chromatic scale, 4/4 time signature. The scale is written on two staves in treble clef, starting on C4 and ending on C5. The notes are: C4, C#4, D4, D#4, E4, E#4, F4, F#4, G4, G#4, A4, A#4, B4, B#4, C5. A slur covers the notes from C4 to C5.

Region 10 Middle School Scales

Horn in F

Concert F Major



Concert Bb Major



Concert Eb Major



Concert Ab Major



Concert Db Major



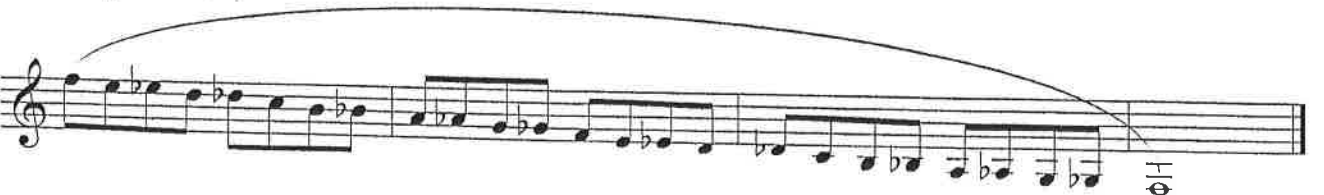
Concert C Major



Concert G Major



Chromatic



Region 10 Middle School Scales

Trombone/Bar. B.C.

Concert F Major

Musical notation for Concert F Major scale in bass clef, 4/4 time. The scale is written on a single staff with a slur over the entire line. The key signature has one flat (Bb). The scale starts on F2 and ends on F3.

Concert Bb Major

Musical notation for Concert Bb Major scale in bass clef, 4/4 time. The scale is written on a single staff with a slur over the entire line. The key signature has two flats (Bb, Eb). The scale starts on Bb2 and ends on Bb3.

Concert Eb Major

Musical notation for Concert Eb Major scale in bass clef, 4/4 time. The scale is written on a single staff with a slur over the entire line. The key signature has three flats (Bb, Eb, Ab). The scale starts on Eb2 and ends on Eb3.

Concert Ab Major

Musical notation for Concert Ab Major scale in bass clef, 4/4 time. The scale is written on a single staff with a slur over the entire line. The key signature has four flats (Bb, Eb, Ab, Db). The scale starts on Ab2 and ends on Ab3.

Concert Db Major

Musical notation for Concert Db Major scale in bass clef, 4/4 time. The scale is written on a single staff with a slur over the entire line. The key signature has five flats (Bb, Eb, Ab, Db, Gb). The scale starts on Db2 and ends on Db3.

Concert C Major

Musical notation for Concert C Major scale in bass clef, 4/4 time. The scale is written on a single staff with a slur over the entire line. The key signature has no sharps or flats. The scale starts on C2 and ends on C3.

Concert G Major

Musical notation for Concert G Major scale in bass clef, 4/4 time. The scale is written on a single staff with a slur over the entire line. The key signature has one sharp (F#). The scale starts on G2 and ends on G3.

Chromatic

Musical notation for Chromatic scale in bass clef, 4/4 time. The scale is written on two staves with a slur over the entire line. The first staff shows the ascending scale (C2 to C3) and the second staff shows the descending scale (C3 to C2).

Region 10 Middle School Scales

Tuba

Concert F Major

Musical notation for the Concert F Major scale in bass clef, 4/4 time. The scale consists of two lines of music. The first line contains the first eight notes: F2, G2, A2, Bb2, C3, D3, E3, F3. The second line contains the next eight notes: G3, A3, Bb3, C4, D4, E4, F4, G4. A slur covers the second line, and a fermata is placed over the final G4 note.

Concert Bb Major

Musical notation for the Concert Bb Major scale in bass clef, 4/4 time. The scale consists of two lines of music. The first line contains the first eight notes: Bb1, C2, D2, Eb2, F2, G2, Ab2, Bb2. The second line contains the next eight notes: C3, D3, Eb3, F3, G3, Ab3, Bb3, C4. A slur covers the second line, and a fermata is placed over the final C4 note.

Concert Eb Major

Musical notation for the Concert Eb Major scale in bass clef, 4/4 time. The scale consists of two lines of music. The first line contains the first eight notes: Eb1, F2, G2, Ab2, Bb2, C3, D3, Eb3. The second line contains the next eight notes: F3, G3, Ab3, Bb3, C4, D4, Eb4, F4. A slur covers the second line, and a fermata is placed over the final F4 note.

Concert Ab Major

Musical notation for the Concert Ab Major scale in bass clef, 4/4 time. The scale consists of two lines of music. The first line contains the first eight notes: Ab1, Bb1, C2, D2, Eb2, F2, G2, Ab2. The second line contains the next eight notes: Bb2, C3, D3, Eb3, F3, G3, Ab3, Bb3. A slur covers the second line, and a fermata is placed over the final Bb3 note.

Concert Db Major

Musical notation for the Concert Db Major scale in bass clef, 4/4 time. The scale consists of two lines of music. The first line contains the first eight notes: Db1, Eb1, F2, G2, Ab2, Bb2, C3, Db3. The second line contains the next eight notes: Eb3, F3, G3, Ab3, Bb3, C4, Db4, Eb4. A slur covers the second line, and a fermata is placed over the final Eb4 note.

Concert C Major

Musical notation for the Concert C Major scale in bass clef, 4/4 time. The scale consists of two lines of music. The first line contains the first eight notes: C2, D2, E2, F2, G2, A2, B2, C3. The second line contains the next eight notes: D3, E3, F3, G3, A3, B3, C4, D4. A slur covers the second line, and a fermata is placed over the final D4 note.

Concert G Major

Musical notation for the Concert G Major scale in bass clef, 4/4 time. The scale consists of two lines of music. The first line contains the first eight notes: G2, A2, B2, C3, D3, E3, F#3, G3. The second line contains the next eight notes: A3, B3, C4, D4, E4, F#4, G4, A4. A slur covers the second line, and a fermata is placed over the final A4 note.

Chromatic

Musical notation for the Chromatic scale in bass clef, 4/4 time. The scale consists of two lines of music. The first line contains the first eight notes: C2, C#2, Cb2, Bb2, B2, B#2, C3, C#3. The second line contains the next eight notes: C#3, Cb3, B2, B#2, C3, C#3, Cb3, B2. A slur covers the second line, and a fermata is placed over the final C#3 note.