



Owner's Manual

www.perfectportions.me

Please Read and Save These Instructions

In-Line Digital Food Portioning Scale



Features:

- Ultra-thin
- Patented bracket system allows for flexibility of placement along cutting boards. Adjustable brackets accommodate cutting boards measuring from 7.625 inches to 8.75 inches in width.
- Stainless steel design.
- One time unit selector switch for ounces or grams.
- Capacity 2lb, 907g.
- One button operation with integrated tare on/off quick response touch button.
- Requires two CR-2032 batteries.

SCL-032805

In-Line Digital Food Portioning Scale

www.perfectportions.me

Intended Use

SCL-032805 is intended for use in deli style and meal assembly environments to ensure proper portioning and to aid in strong cost control while eliminating the need for backroom prep time associated with portion control.

Important Instructions

- Do Not place any heavy objects on the scale as this will impact the precision of the instrument.
- Do Not submerge the unit in water as doing so will render the unit inoperable.
- Do Not use any abrasives or corrosives to clean.
- Do Not disassemble. The unit contains no user serviceable parts.
- Do Not store or operate in excessive temperature or humidity.
- Never store the scale over steam table or hot well.
- Use only CR-2032 3V batteries.
- Not intended for inventory use. Maximum Capacity 2lb, 907g.

Initial Setup

Tools required:

2 phillips screw driver, Tape measure/ruler

Step 1

Remove protective foil from the stainless steel top, screen and touch button.

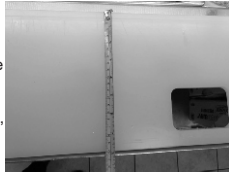
Sanitize the scale with proper solution and sanitizing cloth by wiping the top, bottom and sides.



Step 2

Measure cutting board width. Note here

NOTE - Out of the box the scale will fit cutting boards 7 7/8", 192 mm in width. If your cutting board measures 7 7/8", 192 mm, proceed to Step 5.



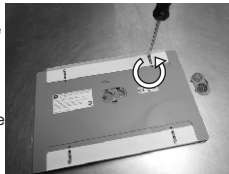
Step 3

Place scale upside down on the flat surface.

Open battery compartment and remove batteries. Place batteries and cover aside.

To adjust brackets start with one bracket by loosening both screws 1/2 turn counter clockwise.

Extend by desired amount and tighten (Do not over tighten).



Step 4

Measure the distance noted in Step 2 from top bracket to the opposite side and adjust accordingly by loosening the screws 1/2 turn.

Tighten when the distance noted in Step 2 is achieved on both sides of the scale. (Do not over tighten)

NOTE - The two brackets should be parallel to each other. This step might have to be repeated in order to achieve a proper fit over cutting board.

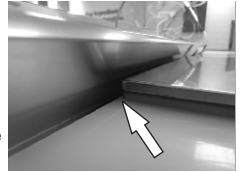


Step 5

Place scale over cutting board and verify that it is seated properly and free to move side to side.

If your serving station is equipped with a day cover, close it slowly and ensure there is adequate clearance between closed day cover and scale top.

WARNING - If day cover contacts the scale it will shorten the battery life and possibly damage the scale.



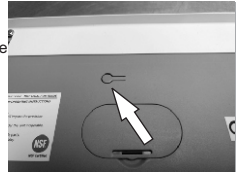
Step 6

Insert the batteries (+ up) and replace battery compartment cover.



Step 7

Select the desired unit of measure oz or g by pressing the button underneath the scale near the battery compartment.



Step 8

Place in service.



In-Line Digital Food Portioning Scale

www.perfectportions.me

Operational Instructions

Step 1

Place the desired precut bread or container on top of the scale lined with deli sheet so that the screen is visible. Touch tare button. Add appropriate amount of product being measured.



Step 2

If shredded cheese is required, touch tare button again and add appropriate amount of cheese.



Note - Scale can also be used with silicone trays.

Training Materials

For additional training and operational materials please visit www.perfectportions.me

Maintenance and Care

Scale needs to be cleaned and sanitized as often as it is required.

Use only approved sanitizer to wipe the scale down.

WARNING - Never use any abrasive materials or unapproved chemicals as this will result in damage to the scale finish and electronic components.

Never submerge the unit in any liquid.

When screen displays a low battery sign, replace only with new CR-2032 3V batteries. Always keep the scale on the flat/level surface while replacing batteries and away from food containers.

Do Not use the scale if it was damaged in any way.

Limited Warranty

Products manufactured by Perfect Portions, LLC are warranted to the original consumer to be free of defects in material and workmanship for twelve (12) months from the original date of purchase. The warranty does not cover products modified outside our factory, damage or failure caused by acts of God, abuse, misuse, abnormal usage, faulty installation, failure to follow suggested maintenance procedures enclosed with this product (as defined by Magnuson-Moss Warranty-Federal Trade Commission Improvement Act). This unit is guaranteed to the original retail purchaser against defects in quality or workmanship for a period of one year from the date of original purchase. If this unit fails because of a manufacturing defect within 30 days of purchase, return the unit, with your receipt, to the retailer. After 30 days, but within the warranty period, if the unit was purchased within the continental United States, return it, freight prepaid, to Perfect Portions for repair or replacement. If the unit was purchased outside the continental United States, return the unit to the place of purchase. This warranty does not cover damage due to accidents, operation on any other than CR-2032 3 volt batteries, or any other abuse. All implied warranties, including the warranties of merchantability and of fitness of purpose, if applicable, are hereby limited in duration to the period of one year from the date of original retail purchase. Some States do not allow limitations on how long an implied warranty lasts, so the above limitations may not apply to you. Incidental or consequential damages arising from a breach of either express or implied warranties are hereby disclaimed and excluded. Some states do not allow the exclusion of limitation of incidental or consequential damages, so this limitation or exclusion may not apply to you.

This warranty gives you specific legal rights, and you may also have other rights which vary from state to state. No informal dispute settlement mechanisms are available. This limited warranty is given in lieu of all other warranties.

In-Line Digital Food Portioning Scale

www.perfectportions.me

Manufactured for:
Perfect Portions, LLC.
66 Orchard St.
Ansonia, CT 06401
www.perfectportions.me

SCL-032805