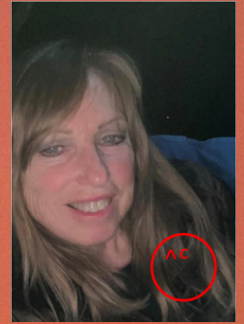


THE WORLD OF LIVING ENERGY

Angela Hart, Shamanic Practitioner | Teacher of Ancient Wisdom

Classes 2023:

This class is from an ancient nature based system of studying and working with the living energy within us and around us. The ancient people believed that everything in the Universe is connected in a web or network of living energy that we can interact with to make positive changes. Studying the ways of nature and learning how to work with the forces of Earth, Air, Fire, Water & Cosmos is the key to the art of moving or rearranging the world of living energy. We can learn to change the effects & energetic structure of a situation, develop inner sight & awareness, and create sovereignty, inner strength, harmony, healing, and higher understanding. Classes build on each other. Walking/light hiking involved.



April 1, 2023 - The World of Living Energy - Part One - Outdoors –Water & Earth

May 20, 2023 - The World of Living Energy- Part Two - Outdoors – Fire, Air & Cosmos.

July 22, 2023 - The World of Living Energy- Part Three - Indoors – Energy Techniques for private sessions.

September 30, 2023 -The World of Living Energy - Part Four - Outdoors – Despacho - nature gratitude offering

You will Learn:

- The Ancient Ones
- Cosmovision & Prophecy
- 7 Levels, 7 Laws of Nature, & 7 Eyes, Law of Ayni - Reciprocity
- Structure of Living Energy
- Ancient anatomy of the Energy Body
- Techniques to rearrange, drive or direct Living Energy
- How to clear spaces
- Building your Mesa Bag with powerful artifacts
- The power of your Mesa Bag
- How to use your Mesa Bag
- How to do private sessions with others
- Qarpay Ayni Ceremony – Initiation - Reciprocal Exchange of Personal Power - Transmission of ancient lineage

*Cash or check
at the Door***

Shamanic Practitioner | Teacher of Ancient Wisdom | Licensed Massage Therapist

Mage | Dimensional Nature Guide | Dimensional Healer

For more info go to:

www.AncientWisdomMedicine.com

Email: AncientWisdomMedicine@gmail.com

Huntsville, Alabama