



A large print version of this brochure is available on request.

This brochure is not a contract and does not form any part of a contract. We are not responsible for any misstatement in this brochure. All content, terms and conditions are correct at the time of going to print. We have the right to alter specifications without notice. Age restrictions apply on all retirement developments. If there are any important matters which are likely to affect your decision to move, please contact the Sales Consultant before travelling to view a development.

July 2023



More than 90% of our customers say they would recommend us, which means we've been awarded the maximum 5-star rating for customer satisfaction. We've achieved this rating every year we have taken part in the survey.

To find out more, call **0800 201 4811**  
or visit [mccarthy-stone.co.uk/walnut-tree-place](https://mccarthy-stone.co.uk/walnut-tree-place)

# OVERVIEW AND APARTMENT PLANS

## WALNUT TREE PLACE, GORING-BY-SEA



**McCARTHY STONE**  
*Life, well lived*

**McCARTHY STONE**  
*Life, well lived*

McCarthy & Stone Retirement Lifestyles Limited, 4th Floor, 100 Holdenhurst Road, Bournemouth, Dorset BH8 8AQ.

2694\_WTP\_GRN\_DO-AP-21-07

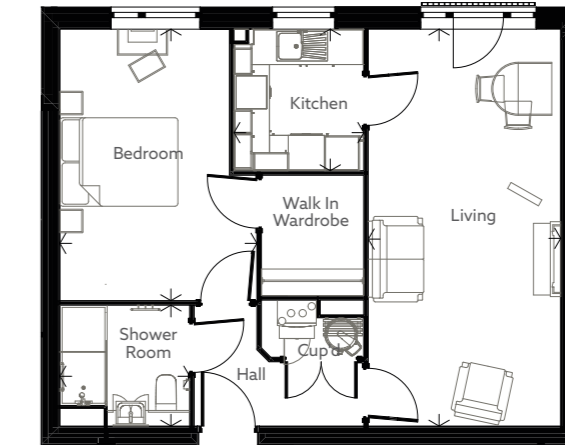
# DEVELOPMENT OVERVIEW



- 1 bedroom property
- 2 bedroom property
- E - Entrance Lobby
- GS - Guest Suite
- K - Kitchenette
- L - Lift
- M - Meeting Room
- MSC - Mobility Scooter Charging
- P - Plant Room
- R - Reception
- RR - Refuse & recycling
- S - Store

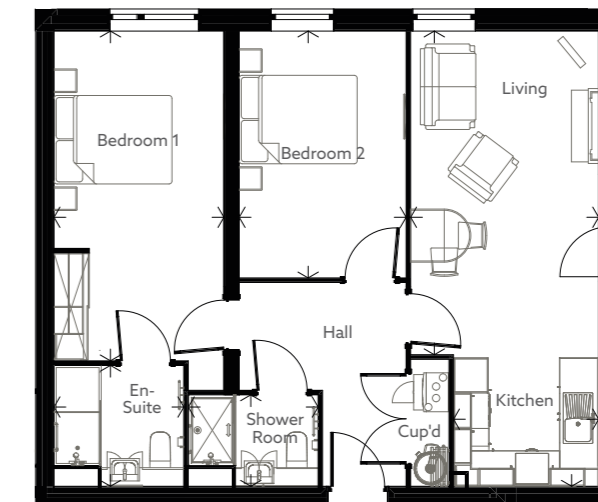
# TYPICAL APARTMENT LAYOUT

## One Bedroom



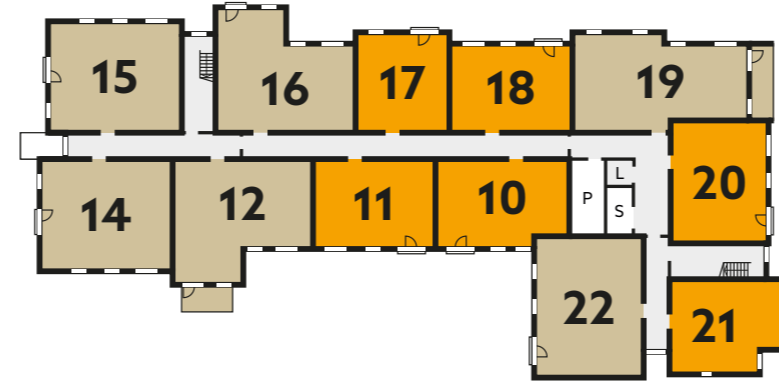
- Approximate room sizes**
- Living Room  
6730mm x 3262mm / 12'1" x 10'8"
  - Kitchen  
2400mm x 2200mm / 7'10" x 7'3"
  - Shower Room  
2050mm x 2200mm / 6'9" x 7'3"
  - Bedroom  
4603mm x 3340mm / 15'1" x 10'11"

## Two Bedroom

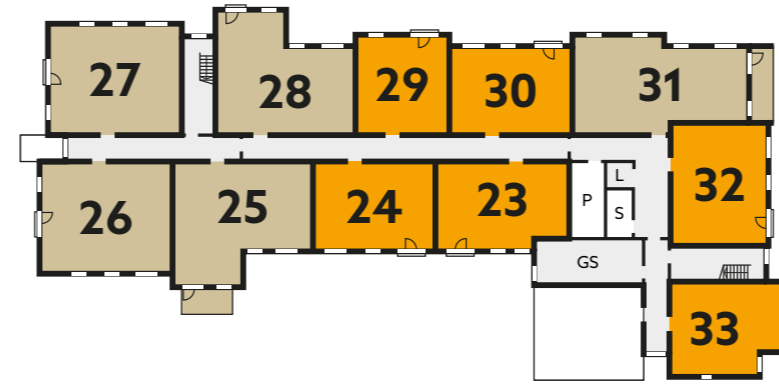


- Approximate room sizes**
- Living Room  
5510mm x 3187mm / 18'1" x 10'5"
  - Kitchen  
2253mm x 2460mm / 7'4" x 8'1"
  - Shower Room  
2200mm x 1550mm / 7'3" x 5'1"
  - Bedroom 1  
5591mm x 2880mm / 18'4" x 9'5"
  - En Suite  
2050mm x 2200mm / 6'9" x 7'3"
  - Bedroom 2  
4186mm x 2830mm / 13'7" x 9'3"

## First Floor



## Second Floor



## Third Floor

