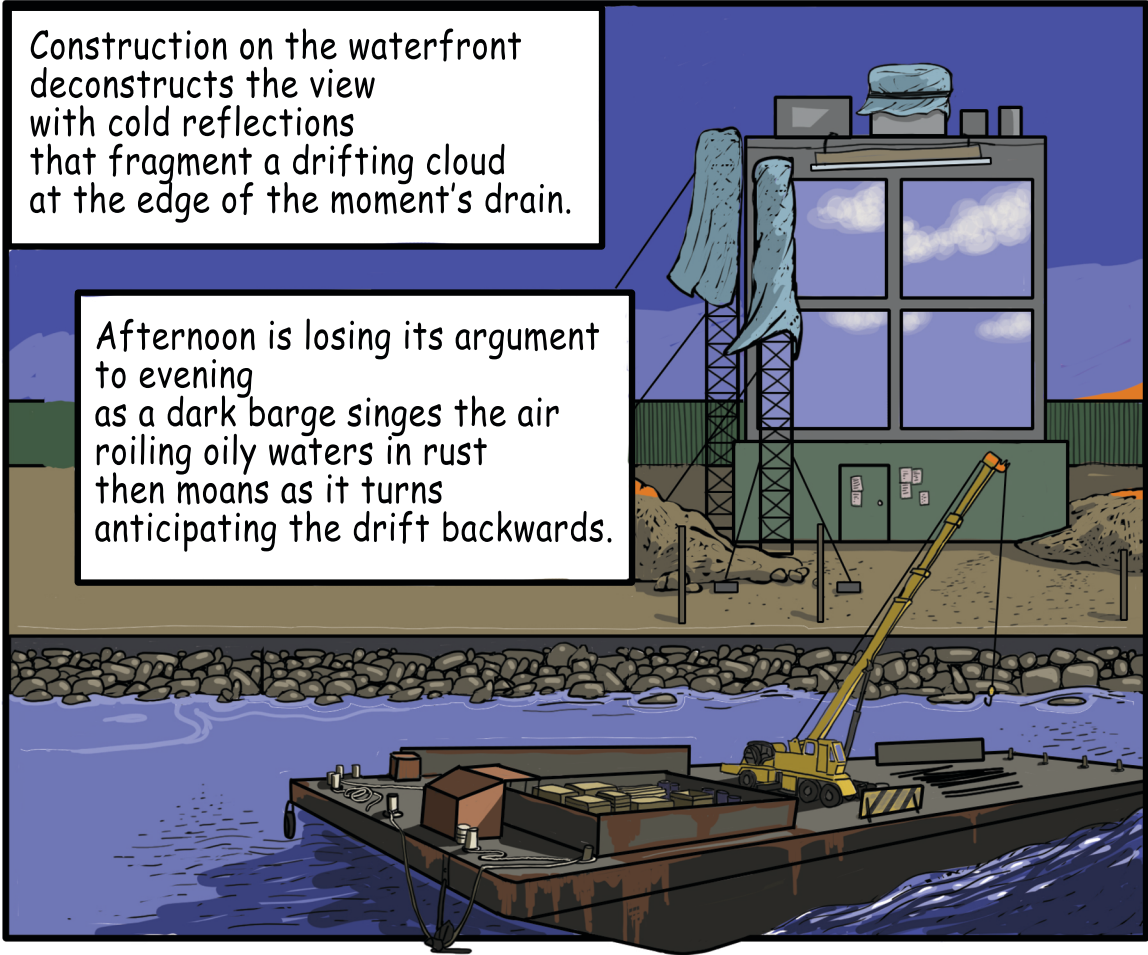


# Construction on the Waterfront

Construction on the waterfront  
deconstructs the view  
with cold reflections  
that fragment a drifting cloud  
at the edge of the moment's drain.

Afternoon is losing its argument  
to evening  
as a dark barge sings the air  
roiling oily waters in rust  
then moans as it turns  
anticipating the drift backwards.



A cormorant floats on the river  
dives beneath only to resurface farther along  
over and under and over and under  
as if trying to sew the river closed.

