

ECOJOCS Offroad 101: Safety, Etiquette, Techniques





About ECOJOCS

Club Mission and Values

ECOJOCS promotes safety, respect for nature, legal offroading and builds lasting friendships among Jeep enthusiasts.

Education and Skill Development

The club organizes this training session to help understand our common rules technique and expectations so all members are on the same page.

Trail Stewardship and Advocacy

ECOJOCS advocates for responsible recreation to keep trails open and protected for future generations.



Core Safety Guidelines

Safety Precautions

Scout terrain before attempts, avoid drinking and driving, and respect your limits by saying 'NO' when necessary.





Core Safety Guidelines



Safety Precautions

Scout terrain before attempts, avoid drinking and driving, and respect your limits by saying 'NO' when necessary.

Travel in Groups

Always travel with at least two vehicles to ensure safety and support during offroading.



Core Safety Guidelines



Safety Precautions

Scout terrain before attempts, avoid drinking and driving, and respect your limits by saying 'NO' when necessary.

Travel in Groups

Always travel with at least two vehicles to ensure safety and support during offroading.

Use of 4-Low Range

Engage 4-low properly on trails to maintain control and handle challenging offroad conditions.



Core Safety Guidelines



Safety Precautions

Scout terrain before attempts, avoid drinking and driving, and respect your limits by saying 'NO' when necessary.

Travel in Groups

Always travel with at least two vehicles to ensure safety and support during offroading.

Use of 4-Low Range

Engage 4-low properly on trails to maintain control and handle challenging offroad conditions.

Communication and Spotters

Use spotters and agreed hand signals



Core Safety Guidelines



Safety Precautions

Scout terrain before attempts, avoid drinking and driving, and respect your limits by saying 'NO' when necessary.

Travel in Groups

Always travel with at least two vehicles to ensure safety and support during offroading.

Use of 4-Low Range

Engage 4-low properly on trails to maintain control and handle challenging offroad conditions.

Communication and Spotters

Use spotters and agreed hand signals

Maintain Line of Sight when possible

Keep your mirrors full and radio handy



Additional Safety Practices



Maintain Safe Vehicle Spacing

Keep proper distance between vehicles to allow maneuvering and prevent collisions during hazards like rollovers or traction loss.



Additional Safety Practices



Maintain Safe Vehicle Spacing

Keep proper distance between vehicles to allow maneuvering and prevent collisions during hazards like rollovers or traction loss.

Trail Courtesy and Parking

Pull off trails when stopping to let others pass and avoid parking in flammable areas to prevent fire risks.



Additional Safety Practices



Maintain Safe Vehicle Spacing

Keep proper distance between vehicles to allow maneuvering and prevent collisions during hazards like rollovers or traction loss.

Trail Courtesy and Parking

Pull off trails when stopping to let others pass and avoid parking in flammable areas to prevent fire risks.

Group Safety and Communication

Prioritize group safety by stopping to assist others and using mobile radios to alert hazards or delays.



Recovery Safety



Winches and winch line

Wear gloves - especially with metal cable

Never stand directly in line with or straddle a tensioned winch line, or within a triangulation

Always keep at least 5 full wraps of cable



Recovery Safety



Winches and winch line

Wear gloves - especially with metal cable

Never stand directly in line with or straddle a tensioned winch line, or within a triangulation

Always keep at least 5 full wraps of cable

Mechanisms

Stay clear of moving parts when pulling or respooling cable

Watch loose clothing



Recovery Safety



Winches and winch line

- Wear gloves - especially with metal cable
- Never stand directly in line with or straddle a tensioned winch line, or within a triangulation
- Always keep at least 5 full wraps of cable

Mechanisms

- Stay clear of moving parts when pulling or respooling cable
- Watch loose clothing

Other Equipment

- Use a tree saver
- Keep the hook facing up
- Make sure anchors are solid (No dead trees)
- Always secure to a tow point
- Use a snatch block
- Assist with the Jeep in tow when needed



High Lift Jacks

General Safety

- Use Appropriate lifting points.
- Stabilize the vehicle. (Be aware of terrain and gravity)
- Vehicle in park or wheel chucked.
- Use a base plate if possible.





High Lift Jacks



General Safety

- Use Appropriate lifting points.
- Stabilize the vehicle. (Be aware of terrain and gravity)
- Vehicle in park or wheel chucked.
- Use a base plate if possible.

Equipment

- Use a base plate for stability



High Lift Jacks



General Safety

- Use Appropriate lifting points.
- Stabilize the vehicle. (Be aware of terrain and gravity)
- Vehicle in park or wheel chucked.
- Use a base plate if possible.

Equipment

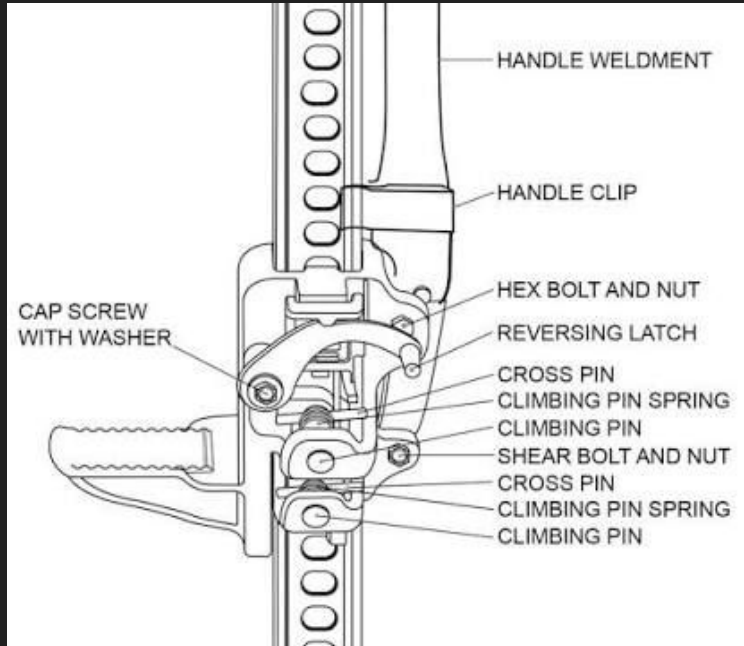
- Use a base plate for stability

Mechanisms

- Know how to use the equipment or ask for help.
- Respect the "Triangle of Death".
- Use a two-handed grip on the handle.



High Lift Jacks



General Safety

Use Appropriate lifting points.
Stabilize the vehicle. (Be aware of terrain and gravity)
Vehicle in park or wheel chucked.
Use a base plate if possible.

Equipment

Use a base plate for stability

Mechanisms

Know how to use the equipment or ask for help.
Respect the "Triangle of Death".
Use a two-handed grip on the handle.

Operation

Secure the bar before switching directions.
Watch for leaning or sliding.

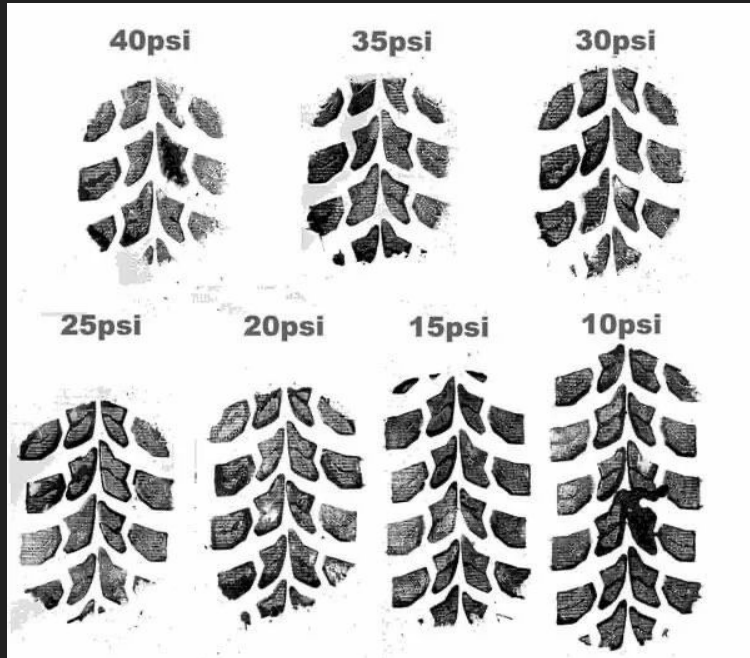


Tire Pressure and Traction

Airing Down Benefits

Lowering tire pressure to around 16 psi increases the tire's footprint improving traction on uneven terrain.

Tire pressure varies with temperature; measure pressure when warm for accurate readings and safe performance.





Tire Pressure and Traction



Airing Down Benefits

Lowering tire pressure to around 16 psi increases the tire's footprint improving traction on uneven terrain.

Tire pressure varies with temperature; measure pressure when warm for accurate readings and safe performance.

Rim Safety Threshold

Most rims remain secure with tire pressure as low as 10–12 psi without losing the bead on the rim.



Tire Pressure and Traction



Airing Down Benefits

Lowering tire pressure to around 16 psi increases the tire's footprint improving traction on uneven terrain.

Tire pressure varies with temperature; measure pressure when warm for accurate readings and safe performance.

Rim Safety Threshold

Most rims remain secure with tire pressure as low as 10–12 psi without losing the bead on the rim.

Other Traction Assists

Lockers - Both wheels on an axle spin at the same time.

Sway Bar Disconnect - Allows full vertical wheel flex



Tire Pressure and Traction



Airing Down Benefits

Lowering tire pressure to around 16 psi increases the tire's footprint improving traction on uneven terrain.

Tire pressure varies with temperature; measure pressure when warm for accurate readings and safe performance.

Rim Safety Threshold

Most rims remain secure with tire pressure as low as 10–12 psi without losing the bead on the rim.

Other Traction Assists

Lockers - Both wheels on an axle spin at the same time.

Sway Bar Disconnect - Allows full vertical wheel flex

Post-Ride Airing Up

Inflate tires back to proper pressure after offroading using portable compressors commonly carried by riders.

Vehicle Handling and Obstacle Navigation



Tire Placement Strategy

Place tires on high points of obstacles to avoid damage to low-hanging vehicle parts.



Vehicle Handling and Obstacle Navigation



Tire Placement Strategy

Place tires on high points of obstacles to avoid damage to low-hanging vehicle parts.

Maintaining Traction and Stability

Approach ditches and logs at an angle and travel straight up or down steep slopes for safety.



Vehicle Handling and Obstacle Navigation



Tire Placement Strategy

Place tires on high points of obstacles to avoid damage to low-hanging vehicle parts.

Maintaining Traction and Stability

Approach ditches and logs at an angle and travel straight up or down steep slopes for safety.

Manual Transmission Tips

Avoid using the clutch on hills and obstacles to maintain consistent control.

Avoid depression the clutch especially in water

Use 4-low and second gear for better vehicle control on challenging terrain and obstacles.





Tread Lightly Principles



Respect Trails and Environment

Stay on designated trails and avoid creating bypasses to protect ecosystems and preserve access.

Use established water crossings



Tread Lightly Principles



Respect Trails and Environment

Stay on designated trails and avoid creating bypasses to protect ecosystems and preserve access.

Use established water crossings

Responsible Trail Use

Stay off illegal trails, and leave gates as found. Always respect landowner or state rules.



Tread Lightly Principles



Respect Trails and Environment

Stay on designated trails and avoid creating bypasses to protect ecosystems and preserve access.

Use established water crossings

Responsible Trail Use

Stay off illegal trails, and leave gates as found. Always respect landowner or state rules.

Minimize Environmental Impact

Reduce speed to avoid dust, postpone rides during mud season, and always pack out trash.



Yielding and Courtesy



Yield to Horses

Pull over, turn off your engine, and ask riders how to proceed to avoid startling horses.

Safety and Courtesy

Prioritize safety and courteous behavior to prevent accidents and injuries among trail users.

Effective Communication

Maintain clear communication and a cooperative attitude with mountain bikers and pedestrians.



Minimum Required Equipment



Essential Vehicle Equipment

Vehicles must have fixed front and rear tow points; bumpers and roll bars do not qualify. Batteries must be securely tied down without bungee cords or zip ties.



Minimum Required Equipment



Essential Vehicle Equipment

Vehicles must have fixed front and rear tow points; bumpers and roll bars do not qualify. Batteries must be securely tied down without bungee cords or zip ties.

Spare Tire and Tools

Carry a full-size spare tire within two inches diameter of mounted tires, along with a jack and tire-changing tools.



Minimum Required Equipment



Essential Vehicle Equipment

Vehicles must have fixed front and rear tow points; bumpers and roll bars do not qualify. Batteries must be securely tied down without bungee cords or zip ties.

Spare Tire and Tools

Carry a full-size spare tire within two inches diameter of mounted tires, along with a jack and tire-changing tools.

Safety and Communication Gear

Bring a fire extinguisher, basic first aid kit, club radio, and ensure all occupants wear seatbelts for maximum safety.



Minimum Required Equipment



Essential Vehicle Equipment

Vehicles must have fixed front and rear tow points; bumpers and roll bars do not qualify. Batteries must be securely tied down without bungee cords or zip ties.

Spare Tire and Tools

Carry a full-size spare tire within two inches diameter of mounted tires, along with a jack and tire-changing tools.

Safety and Communication Gear

Bring a fire extinguisher, basic first aid kit, club radio, and ensure all occupants wear seatbelts for maximum safety.

Tow Straps Specifications

Use 20–30 feet long tow straps rated for 20,000 lbs with sewn loop ends; avoid metal hooks or chains for safety.



Recommended & Optional Gear



Essential Recovery Tools

Basic tools, a kinetic recovery rope, portable air compressor, Sway Bar disconnects and a tire deflator are all great to have. A winch is something you'll end up using and be glad you have.

Additional Helpful Items

Tarp, D-ring or soft shackles, and stabilizing boards support safe and effective vehicle recovery efforts.

Safety and Comfort Gear

Extra clothing like rain gear and warm layers improve comfort and protection in varying trail conditions.

Optional Supplies

Food, water, shovel, saw, spare parts, fluids, and handheld radios enhance preparedness and safety on the trail.



Recommended & Optional Gear



Essential Recovery Tools

Basic tools, a kinetic recovery rope, portable air compressor, Sway Bar disconnects and a tire deflator are all great to have.

A winch is something you'll end up using and be glad you have.

Additional Helpful Items

Tarp, D-ring or soft shackles, and stabilizing boards support safe and effective vehicle recovery efforts.

Safety and Comfort Gear

Extra clothing like rain gear and warm layers improve comfort and protection in varying trail conditions.

Optional Supplies

Food, water, shovel, saw, spare parts, fluids, and handheld radios enhance preparedness and safety on the trail.



Recommended & Optional Gear



Essential Recovery Tools

Basic tools, a kinetic recovery rope, portable air compressor, Sway Bar disconnects and a tire deflator are all great to have. A winch is something you'll end up using and be glad you have.

Additional Helpful Items

Tarp, D-ring or soft shackles, and stabilizing boards support safe and effective vehicle recovery efforts.

Safety and Comfort Gear

Extra clothing like rain gear and warm layers improve comfort and protection in varying trail conditions.

Optional Supplies

Food, water, shovel, saw, spare parts, fluids, and handheld radios enhance preparedness and safety on the trail.

Questions?

Director of Membership - Directorofmembership@ecojojs.org

