

MAIN FLOOR PLAN

AGENT:
ALLIE LAU Allie Lau Realty
 allie@allielau.com
 604-689-8222

PRODUCED BY:
 **Almond Tree**
 Media Inc.

ADDRESS:
2726 SW MARINE DR,
VANCOUVER

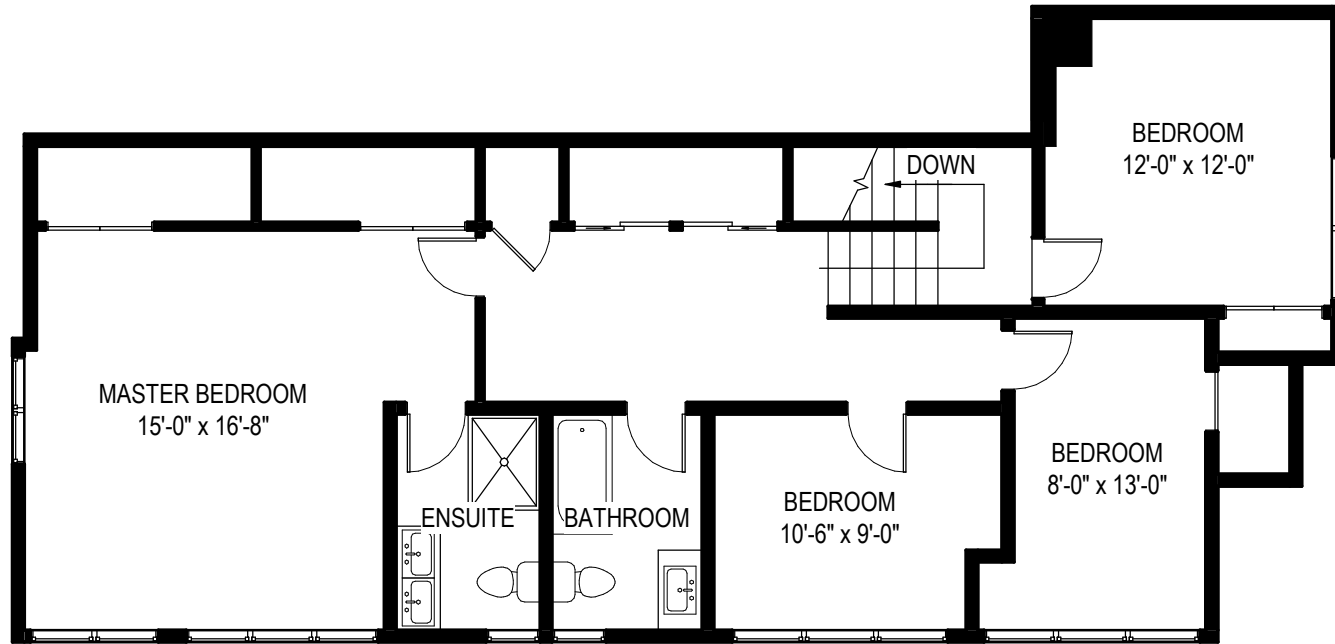
DATE:
22 MAR, 2021

ORIGINAL SCALE:
1/8" = 1'-0"

MAIN FLOOR: 1,589
ABOVE FLOOR: 1,146
BELOW FLOOR: 1,133

TOTAL AREA:
3,868 sq.ft.

DISCLAIMER:
 PLEASE NOTE THIS FLOOR PLAN IS FOR MARKETING PURPOSES AND IS TO BE USED AS A GUIDE ONLY. IT IS NOT INTENDED FOR ANY CONTRACT, WARRANTY OR ENGINEERING PURPOSES. ALL EFFORTS HAVE BEEN MADE TO ENSURE ITS ACCURACY AT TIME OF PRINT. CHANGES MAY BE MADE DURING THE DEVELOPMENT PROCESS AND DIMENSIONS, FIXTURES, FITTINGS, FINISHES AND SPECIFICATIONS ARE SUBJECT TO CHANGE WITHOUT NOTICE. WINDOW PLACEMENT, BALCONY CONFIGURATION, WARDROBE SIZES AND LIVING AREAS MAY VARY SLIGHTLY WITHIN EACH PLAN TYPE. PLEASE REFER TO CONTRACT DRAWINGS FOR MORE ACCURATE INFORMATION ON A PARTICULAR PROPERTY. ALL MEASUREMENTS ARE APPROXIMATE. THE ABOVE INFORMATION IS FROM SOURCES BELIEVED RELIABLE BUT SHOULD NOT BE RELIED UPON WITHOUT VERIFICATION. THE BROKERAGE AND THE AGENT ASSUME NO RESPONSIBILITY FOR ITS ACCURACY.



ABOVE FLOOR PLAN

AGENT:
ALLIE LAU Allie Lau Realty
allie@allielau.com
604-689-8222

PRODUCED BY:
 **Almond Tree**
Media Inc.

ADDRESS:
**2726 SW MARINE DR,
VANCOUVER**

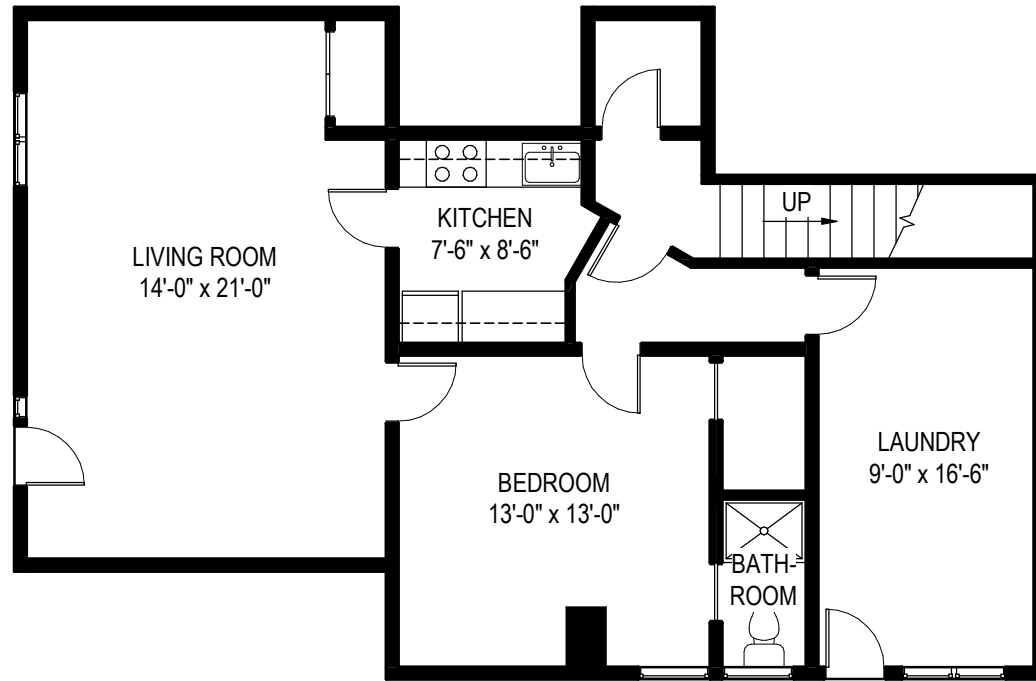
DATE:
22 MAR, 2021

ORIGINAL SCALE:
1/8" = 1'-0"

MAIN FLOOR: 1,589
ABOVE FLOOR: 1,146
BELOW FLOOR: 1,133

TOTAL AREA:
3,868 sq.ft.

DISCLAIMER:
PLEASE NOTE THIS FLOOR PLAN IS FOR MARKETING PURPOSES AND IS TO BE USED AS A GUIDE ONLY. IT IS NOT INTENDED FOR ANY CONTRACT, WARRANTY OR ENGINEERING PURPOSES. ALL EFFORTS HAVE BEEN MADE TO ENSURE ITS ACCURACY AT TIME OF PRINT. CHANGES MAY BE MADE DURING THE DEVELOPMENT PROCESS AND DIMENSIONS, FIXTURES, FITTINGS, FINISHES AND SPECIFICATIONS ARE SUBJECT TO CHANGE WITHOUT NOTICE. WINDOW PLACEMENT, BALCONY CONFIGURATION, WARDROBE SIZES AND LIVING AREAS MAY VARY SLIGHTLY WITHIN EACH PLAN TYPE. PLEASE REFER TO CONTRACT DRAWINGS FOR MORE ACCURATE INFORMATION ON A PARTICULAR PROPERTY. ALL MEASUREMENTS ARE APPROXIMATE. THE ABOVE INFORMATION IS FROM SOURCES BELIEVED RELIABLE BUT SHOULD NOT BE RELIED UPON WITHOUT VERIFICATION. THE BROKERAGE AND THE AGENT ASSUME NO RESPONSIBILITY FOR ITS ACCURACY.



BELOW FLOOR PLAN

AGENT:
ALLIE LAU Allie Lau Realty
allie@allielau.com
604-689-8222

PRODUCED BY:
 **Almond Tree**
Media Inc.

ADDRESS:
**2726 SW MARINE DR,
VANCOUVER**

DATE:
22 MAR, 2021

ORIGINAL SCALE:
1/8" = 1'-0"

**MAIN FLOOR: 1,589
ABOVE FLOOR: 1,146
BELOW FLOOR: 1,133**

**TOTAL AREA:
3,868 sq.ft.**

DISCLAIMER:
PLEASE NOTE THIS FLOOR PLAN IS FOR MARKETING PURPOSES AND IS TO BE USED AS A GUIDE ONLY. IT IS NOT INTENDED FOR ANY CONTRACT, WARRANTY OR ENGINEERING PURPOSES. ALL EFFORTS HAVE BEEN MADE TO ENSURE ITS ACCURACY AT TIME OF PRINT. CHANGES MAY BE MADE DURING THE DEVELOPMENT PROCESS AND DIMENSIONS, FIXTURES, FITTINGS, FINISHES AND SPECIFICATIONS ARE SUBJECT TO CHANGE WITHOUT NOTICE. WINDOW PLACEMENT, BALCONY CONFIGURATION, WARDROBE SIZES AND LIVING AREAS MAY VARY SLIGHTLY WITHIN EACH PLAN TYPE. PLEASE REFER TO CONTRACT DRAWINGS FOR MORE ACCURATE INFORMATION ON A PARTICULAR PROPERTY. ALL MEASUREMENTS ARE APPROXIMATE. THE ABOVE INFORMATION IS FROM SOURCES BELIEVED RELIABLE BUT SHOULD NOT BE RELIED UPON WITHOUT VERIFICATION. THE BROKERAGE AND THE AGENT ASSUME NO RESPONSIBILITY FOR ITS ACCURACY.