

## CORNER GUIDE

How to install concealed blinds in corner windows.

When installing Blindspace® in corners there are a few variations available. Blindspace recommends installing blinds towards the room to minimize the gap between the blinds.

It is important to think through how to configure the boxes and how to configure the covers before starting to cut boxes and covers...

## A. STANDARD BUTTED BOXES

The most straight forward way to install Blindspace in a corner is with two individual boxes. No adjustments of boxes, or covers, are needed. Should the corner not be exactly 90 degrees, box position can easily be adjusted.



The boxes can both stop at the same point or one box can pass the other to reduce the gap between the two blinds (as in picture).

In this example S100x100l with skim coat flange only on the room side has been used.

On the right-side box, the skim coat flange overlapping the left-side box, has been cut off to allow the two boxes to be installed next to each other.

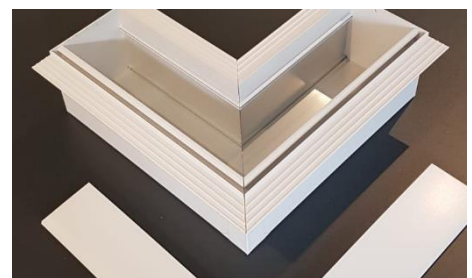
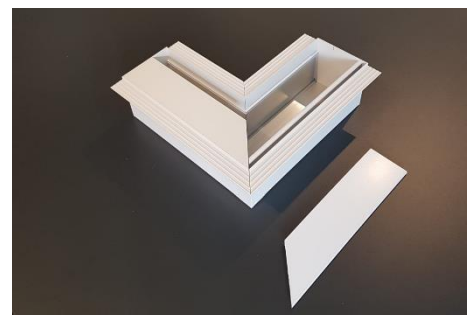
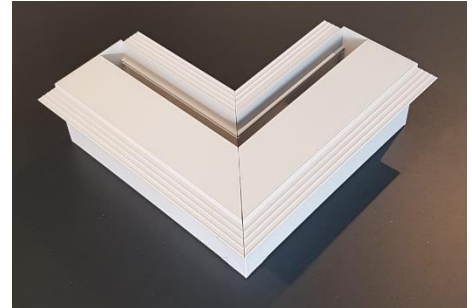


## B. MITRED BOXES AND COVERS

Boxes and covers can be provided mitred to a specific degree or cut at site.

No other adjustments of boxes or covers, are needed.

Images show S100x100R with skim coat flanges both on window and room side.



**CAUTION:** Blindspace don't recommend mitred boxes and covers when blinds are to be installed towards the window as boxes, hinges and covers may need adjustments.