

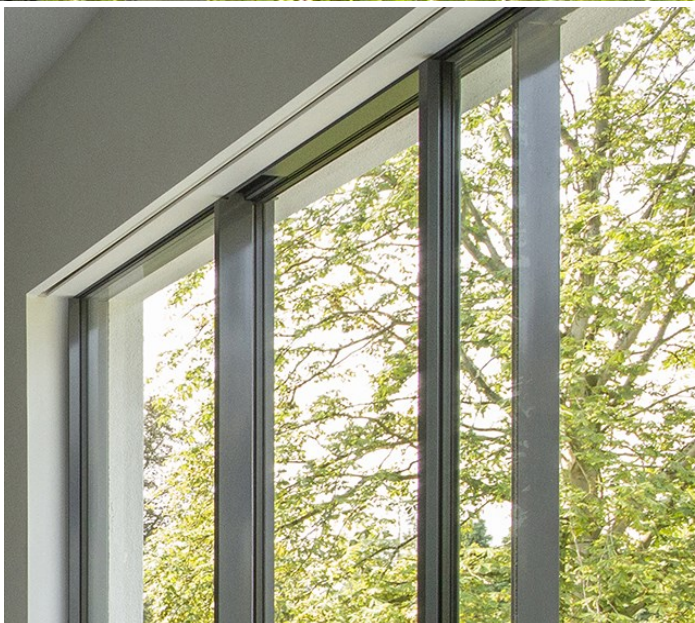
S SERIES

STANDARD FOR HIDING ROLLER BLINDS



DESIGNED TO DISAPPEAR

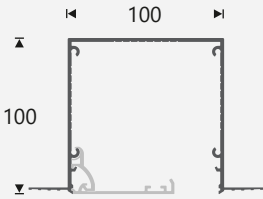
Blindspace® S Series is a concealment box made to hide roller blinds with minimal visual impact. The box is installed during construction with the space accessible for blinds installation when the room is completed. It features the patented Blindspace® Safety Hinge that secures the cover in place and can be installed in any direction, allowing for side boxes to hide blind side channels or guide wires. Popular in floor-to-ceiling windows and sliding doors, S Series can be installed to future-proof buildings to have the option for later installation of concealed blinds.



BL'NDSPACE®

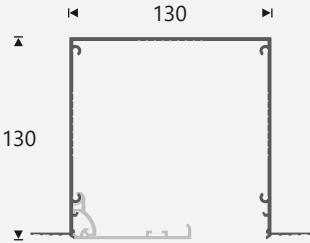
S100x100 Headbox

Blinds up to ~2400 wide*
* Blind sizes depend on blind products used, boxes provided up to 6000 wide.



S130x130 Headbox

Blinds up to ~4000 wide*
ZIP type blinds up to ~2500 wide*



Accessories



Clip-on Hinge Splice Pin Splice Plate

Clip-on Hinge to connect boxes and cover flaps.
Splice Pin to align and connect multiple boxes.
Splice Plate to align multiple cover flaps.

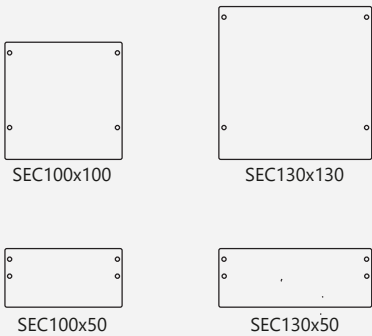
S100x50 Sidebox



S130x50 Sidebox



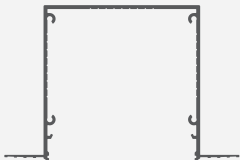
End Caps



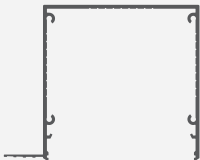
Cover		Opening
65mm		29mm
75mm		19mm
95mm		closed

Cover		Opening
65mm		59mm
75mm		49mm
85mm		39mm
95mm		29mm
125mm		closed

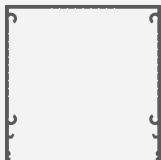
Box Corners



SS - Skim Coat Flanges on both sides
EXAMPLE: S100x100SS



SN - Skim Coat Flange on one side
EXAMPLE: S100x100SN



NN - No Flange
EXAMPLE: S100x100NN

Manufacturer

Blindspace AB
Web: www.blindspace.com
Email: sales@blindspace.com
Tel: +44 20 8798 3945

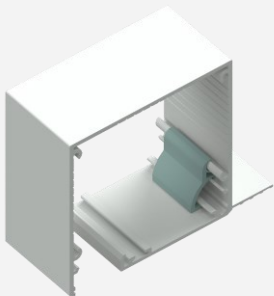
Description

Concealment system to hide roller blinds or to future-proof windows for installation of blinds, with safety hinge that secures the cover in place.

Material & Finish

Aluminium, EN 6063 T6
Powder coated white RAL9016, 30% gloss
Powder coated to specific RAL colour
Raw aluminium

FEATURES



Seamless appearance after painting

Plaster is feathered over skim coat flanges to hide the box leaving only a thin hairline between the ceiling and the Blindspace® cover.

Cover painted to match window or ceiling

The cover can be provided in specific RAL colour or painted at site with primer and emulsion paint, to match window or ceiling.

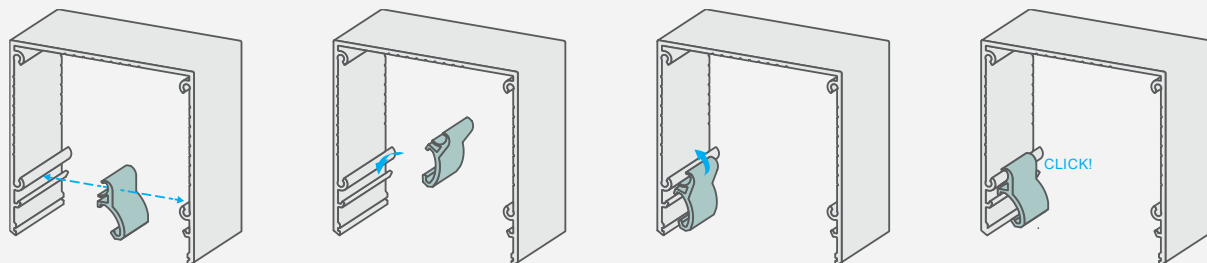
Safety hinge securing the cover in place

The safety hinge can be installed on either side of the box and ensure that the cover is not falling to the floor if accidentally opened.

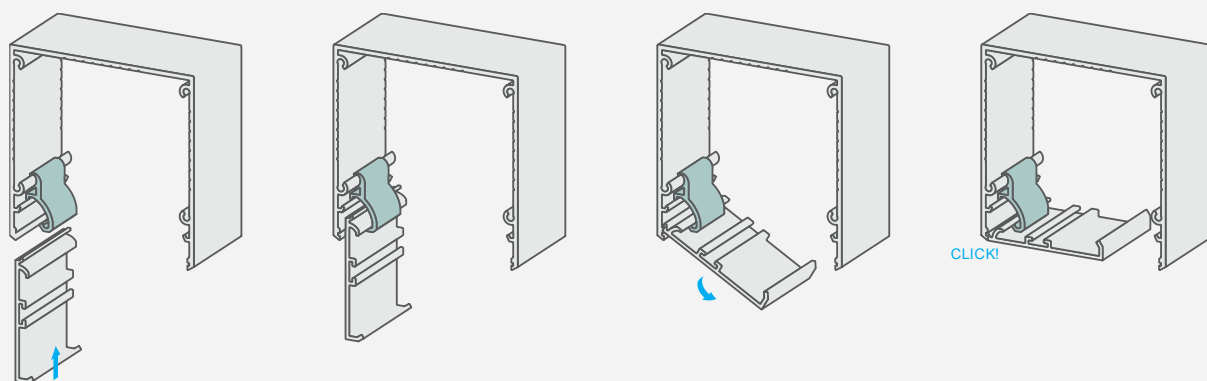
Cut to finished length, maximum 6m

Blindspace boxes and covers are supplied by manufacturer cut to finished length or in 3m or 6m lengths. Splice pins and plates are supplied to align multiple boxes and covers.

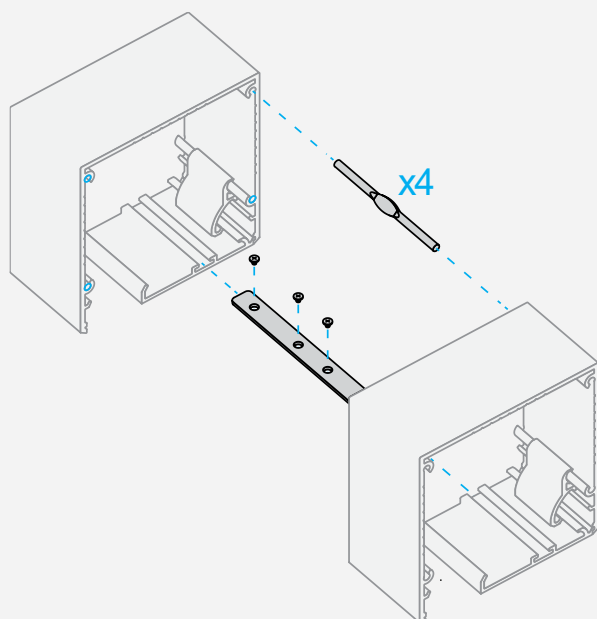
Installing Hinge



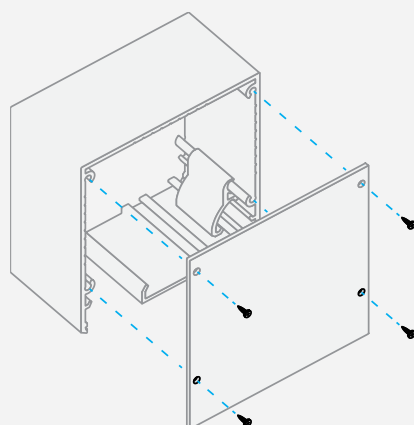
Installing Cover



Joining Boxes



Installing End Cap





Blindspace® S100x100SN - 75mm cover.



Blindspace® S100x100SN - 65mm cover.



Blindspace® S130x130SS - 95mm cover.



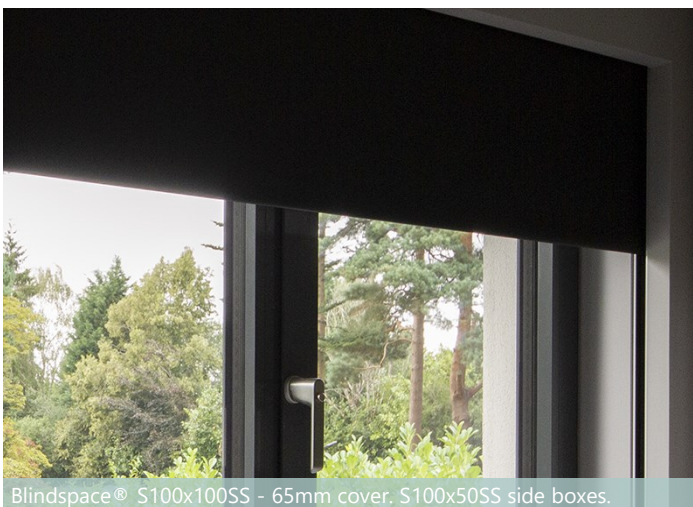
Blindspace® S100x100SS - 65mm cover. Butted corner.



Blindspace® S130x130SN - 95mm cover. Butted corner with no end cap.



Blindspace® S130x130SN - 85mm cover. Butted corner with end cap.



Blindspace® S100x100SS - 65mm cover. S100x50SS side boxes.



Blindspace® S100x100SS - 65mm cover. S100x50SS side boxes.