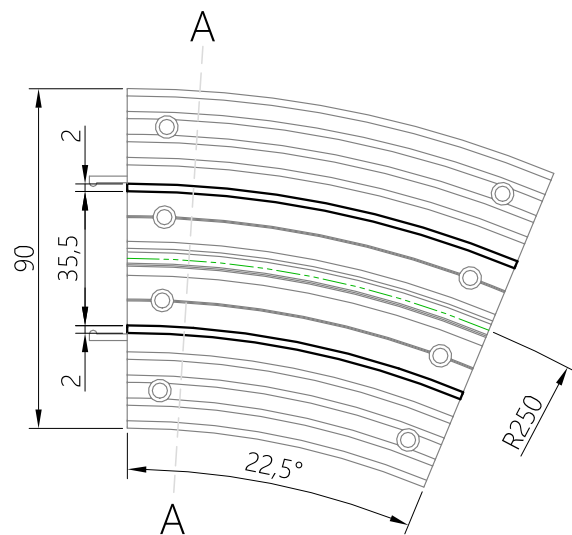


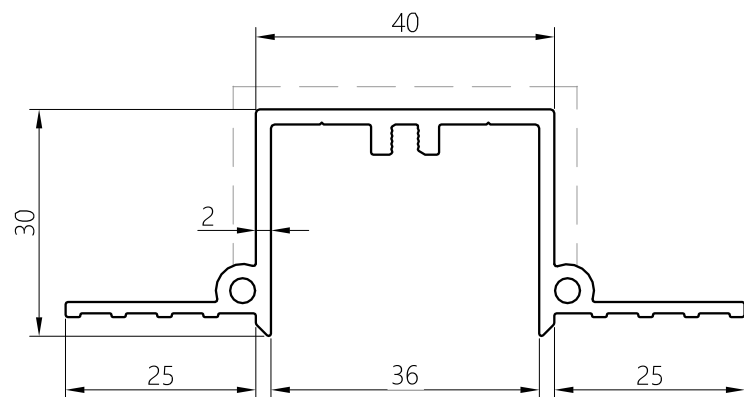
Blindspace TrackTrim® TTCR250
for recessed curved tracks with 250mm radius

TRACK CURVE SECTION TTCR250



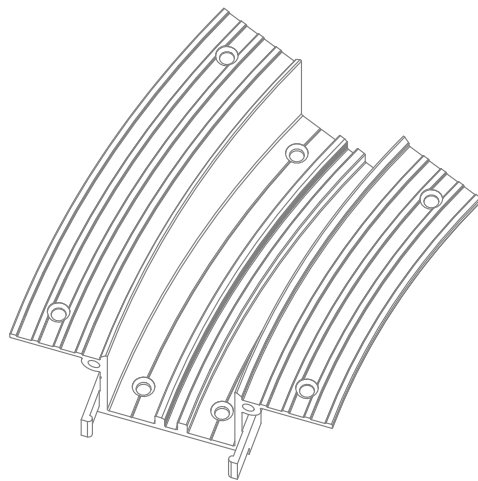
1:2 scale

SECTION A-A

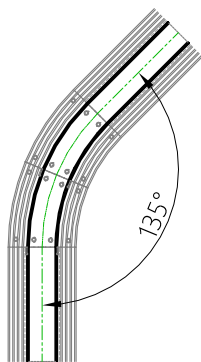


1:1 full scale

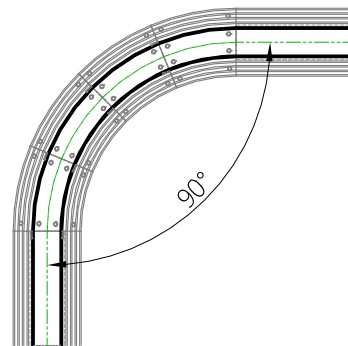
TRACK CURVE SECTION TTCR250 AXONOMETRY



EXAMPLE CURVE CONFIGURATIONS



135° Turn
using two TCR250



90° Turn
using four TCR250

Product	Blindspace TrackTrim Curved Track Section
Description	Recessed profiles to house curtain tracks.
Curtain size	Please see size chart and supplier details for curtain such as max. length and weight.
Finishes	White to be plastered in and decorated at site to match ceiling.
Material	PLA Thermoplastic Polyester
Installation	<p>Please refer to Sample Installation Drawings available both in PDF and DWG at blindspace.com</p> <p>Tracks to be fixed with countersunk screws using holes through back and both flanges into appropriate backing. Scrim tape to be used on flanges. Finished plaster level to be flush with chamfered edge. Allow 3mm recess space for ease of installation, shown in dash line around tracks</p>
Print date	2022/10/18
Page size	ISO A3 420x297
Print file	blindspace tracktrim curved tracks ttc250.dwg