

Call us today for pricing!!



# HOME FOR SALE



The Village Cooperative of Puyallup has 57 lovely single-level homes to fit your lifestyle. From cozy 1-bedroom units to spacious 2-bedroom options with a den, we have the perfect space for you. Sizes range from 890 - 1770 square feet, ensuring you have ample room to relax and entertain.

## Why Choose Us?

Forget about the hassle and expense of home upkeep. At the Village Cooperative of Puyallup, we offer maintenance-provided living while you still enjoy the privileges of ownership. Our dedicated team takes care of all the necessary tasks, so you can spend your time doing the things you love.

## Special Features

- All appliances ✓
- 2 Bedrooms ✓
- 2 Bathrooms ✓
- Private balcony ✓

## Contact Us

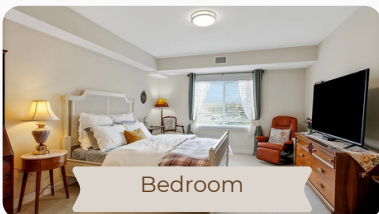
253-387-7600



puyallup@theaapg.com



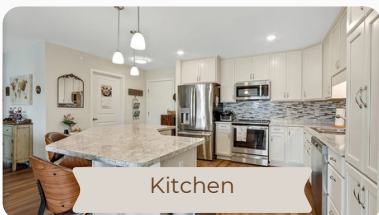
3803 17<sup>th</sup> St SW, Unit 306, Puyallup, WA 98373



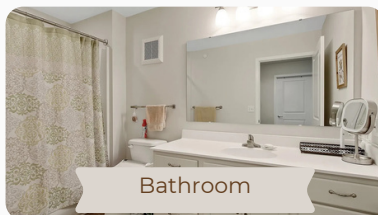
Bedroom



Living Room



Kitchen



Bathroom

