

EAGLE ELITE

Season 12

DANCE TEAM INFO PACKET



ALL STAR COMPETITIVE DANCE TEAMS

NATIONAL CHAMPIONSHIP PROGRAM

Join us for a fun and competitive All Star Dance experience!
Our program offers a variety of dance options and our competitive teams
have won National titles at the All Star World Championships!

- ✓ Pom & Hip Hop and now Jazz!
- ✓ Solos, Duets and Trios!
- ✓ Experienced Coaches!
- ✓ Competitive Pricing!
- ✓ A fun competitive experience!



Contact Us

eagleelitecheerleading@gmail.com

www.eagleelitecheer.com

EAGLE ELITE

Season 12

DANCE TEAM INFO PACKET



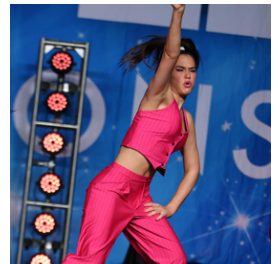
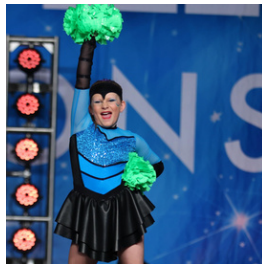
TRYOUTS SATURDAY MAY 17TH

DANCE TEAM SESSIONS

Ages 11 and under 3:30–4:15

Ages 12 and up 4:15–5:00

The tryout will start and last for the entire session time. Parents and athletes should arrive prior to their session start time for paperwork, sizing, payments and questions



If you are unable to make it on Saturday 5/17 email the gym to schedule an individual tryout! We strongly encourage you to schedule your individual prior to tryout day. We will still add to teams after tryout day, however we cannot guarantee that some teams won't already be full.



Contact Us

eagleelitecheerleading@gmail.com

www.eagleelitecheer.com

EAGLE ELITE

Season 12

DANCE TEAM INFO PACKET



TRYOUTS SATURDAY MAY 17TH



TRYOUT CHECKLIST

- Account Created in I-Class Pro
- Tryout Scoring Packet & Questionnaire
- Apparel Sizing Sheet and Order Forms
 - Eagle Elite Handbook & Contract
 - Eagle Elite Financial Agreement
 - Eagle Elite Auto withdrawal Form
- Tryout Day Fees and Deposits Paid

All paperwork can be found online if you would like to look it over and fill it out ahead of time, we will also have copies available at check-in on tryout day.



Contact Us

eagleelitecheerleading@gmail.com

www.eagleelitecheer.com

EAGLE ELITE

Season 12

DANCE TEAM INFO PACKET



PRIOR TO TRYOUTS

Prior to Tryouts we will run an All Class & Open House Schedule. Athletes are welcome to drop into classes to work on skills, see the gym, get to know our coaches, and make friends!

We will have classes running all evening
Monday - Friday April 28th-May 16th

All Class Schedule will be releases soon!

First class FREE Trial- All classes drop in \$15 per class

**annual gym registration fee required for any athletes to attend classes, clinics or lessons at Eagle Elite*



Contact Us

eagleelitecheerleading@gmail.com

www.eagleelitecheer.com

EAGLE ELITE

Season 12

DANCE TEAM INFO PACKET



ABOUT THE PROGRAM

ALL STAR DANCE TEAMS

All Star styles that we compete include Hip hop and Pom. We are also planning on adding Jazz to our dance program this season! Each dance team practices once a week, making it a great option for current cheerleaders also wanting to dance, or current dancers interested in competing All Star.

Our Dance teams compete at All Star Competitions and Elite Dance Teams have the potential to receive a bid and compete at the All Star World Championships in Orlando Florida!

NEW for Season 12

- We plan on offering a non-competitive dance option where dancers will perform a dance at an in house showcase/recital.
- We plan to offer other group dances of different styles for dancers who are interested. These dances could compete at All Star Competitions or studio dance competitions.
- There is also the possibility of adding Prep Dance Teams!

Solos, Duets and Trios can be available upon request



Contact Us

eagleelitecheerleading@gmail.com

www.eagleelitecheer.com

EAGLE ELITE

Season 12

DANCE TEAM INFO PACKET



MORE ABOUT THE PROGRAM

HOW ARE TEAMS MADE

Team placements are based on age and by skill. Athletes should expect the requirements and our expectations for competitive dance teams to get harder every season as we continue to grow our competitive dance program. It could be possible for athletes to be placed on a prep dance team or a non-competitive showcase dance team if we feel it is the best fit.

WHAT HAPPENS AFTER TRYOUTS

Placements will be emailed out Sunday May 18th. (the day after tryouts) In your email you will be given your athlete's team, their coaches, their practice schedule, the date for our parent information meeting and more. In order to tryout and be placed on a team you signed our season 12 team handbook/contract. If you did not sign then you will not receive a placement.



EAGLE ELITE

Season 12

DANCE TEAM INFO PACKET



MORE ABOUT THE PROGRAM

CROSSING OVER

Current Cheer Team athletes are allowed to also compete on a dance team. This is called "crossing". All cheer athletes are eligible to cross to dance teams, provided there is an age eligible team. Age eligible dancers could also cross to other dance teams.

There is a discounted tuition price for the 2nd team for athletes that cross. If an athlete chooses to cross they must remain committed to both teams for the duration of the season.

ATTENDANCE

This is a competitive sport and a national championship program, so attendance is very important to the success of each team. All athletes are allowed 3 unexcused absences. The attendance policy for each type of team can be found in the season 12 Eagle Elite handbook/contract, please make sure you are familiar.



EAGLE ELITE

Season 12

DANCE TEAM INFO PACKET



PRACTICE WEAR/ COSTUMES:

REQUIRED SET



SEASON TANK



OPTIONAL SET



COMPETITION COSTUMES
WILL BE BASED ON EACH
TEAMS ROUTINE THEME, AND
WILL BE DETERMINED AT
CHOREOGRAPHY

EAGLE ELITE

Season 12

DANCE TEAM INFO PACKET



OPTIONAL ITEMS:

WARM UP



CUSTOM REBEL DREAM BAG



JERSEYS



Contact Us

eagleelitecheerleading@gmail.com

www.eagleelitecheer.com

EAGLE ELITE

Season 12

DANCE TEAM INFO PACKET



FINANCIAL INFORMATION

Required Costs:

Item:	Amount:	Due Date:
Tryout Fee	\$25 new athletes/ \$20 returners	Due at Tryouts
Annual Gym Registration Fee	\$45	Due at Tryouts
Practice Wear Set	\$100	Due at Tryouts
Season 12 Tank Top	\$25	Due at Tryouts
Competition Costume	\$TBA	Due at time of order
1/2 May Team Tuition	\$42.50	Due at first practice
Monthly Team Tuition	\$85	1st of every month
Choreography/ Music	\$375	Due August 1st
Competition Fees (for base dance team)	\$450 or 3 payments	\$150 Due September 15th \$150 Due October 15th \$150 Due November 15th

Optional Costs:

Crossover Dance Tuition	\$45	1st of every month
Solo/ Duo/ Trio: Choreography/music	\$TBA based on choreographer	Due prior to choreography
Solo/ Duo/ Trio: competition fees	\$TBA based on competition	Due at time of registration
End of year Nationals	\$TBA	TBA
Optional Practice Wear Set (black & white set)	\$100	Due at time of order
Custom Rebel Dream Bag	\$145	Due at time of order
Custom Warm Up Set	\$180	Due at time of order
Crossover Competition Fees (if dance is your second team) <small>Applies to our regular all-star competitions</small>	\$255	\$85 Due September 15th \$85 Due October 15th \$85 Due November 15th

-Please note these prices are before sales tax, sales tax will be applied to all tangible items.
 -A card processing fee will be applied for any card purchases of \$300 or more.
 -We do accept Cash or Check



Contact Us

eagleelitecheerleading@gmail.com

www.eagleelitecheer.com

EAGLE ELITE

Season 12

DANCE TEAM INFO PACKET



FINANCIAL INFORMATION- SHOWCASE TEAMS

Season 12 Cost Sheet: **Showcase Teams** (1 semester)

Required Costs: Due at time of enrollment:

Item:	Amount:	Due Date:
Tryout Fee/ Team Registration	\$25 new athletes/ \$20 returner	Due Upfront
Annual Gym Registration Fee	\$45	Due Upfront
Team Top	\$25	Due Upfront
Tuition	\$325	Due Upfront
Choreography/ Music	\$75	Due Upfront

Fall Session -Aug 18th- December (Showcase date TBA)

Spring Session- TBA

-Showcase team members will receive a discounted rate for classes during their session of \$10

Optional Costs:

Drop in Classes	\$10 (\$5 off discount)	Due each class
Practice Wear Set	\$100	Due at time of order
Pro Shop Bows	\$25- \$38	Due at time of purchase



Contact Us

eagleelitecheerleading@gmail.com

www.eagleelitecheer.com

EAGLE ELITE

Season 12

DANCE TEAM INFO PACKET



MORE FINANCIAL INFORMATION

DISCOUNTS:

- Sibling Discount: 2nd child gets 50% off Tuition
- Crossover Discount: Dance team is \$45 tuition for members crossing to a dance team and comp fees will be discounted for the dance team.

**sibling discount and crossover discount cannot be stacked*

PAYMENT INFORMATION

Every athlete will be required to keep a card saved on file. Late payments will receive a \$25 late fee if not paid 5 days past the due date. Payments still not received by 10 days past the due date will automatically be charged to the card on file with the late fee. All card purchases at or above \$300 will have a 3% processing fee.

AUTO WITHDRAWAL

You will have the option to set up auto withdrawal for all payments using your card on file, or make payments manually. If you are signed up for automatic payment and decide you would like to make a payment manually instead you must let us know before the due date.



EAGLE ELITE

Season 12

DANCE TEAM INFO PACKET



IMPORTANT DATES:

CHOREOGRAPHY

Dance Team Choreography can be expected to be a weekend in September or October. Exact dates will be announced once we finalize the entire gym choreography schedule.

Choreography for solos/ duets/ trios will depend on the choreographer.

CLOSINGS/ HOLIDAYS

- 4th of July/ Summer Break:** June 27th-July 6th
- End of Summer/ Labor Day Break:** August 27th-September 1st
- Halloween:** October 31st
- Thanksgiving Break:** November 21st-November 30th
- Christmas Break:** December 19th-January 4th
- Spring Break:** March 20th-March 29th

-We recommend planning trips during the gym breaks to avoid missing important practice, choreography, mandatory extra practices or competitions.



Contact Us

eagleelitecheerleading@gmail.com

www.eagleelitecheer.com

EAGLE ELITE

Season 12

DANCE TEAM INFO PACKET



IMPORTANT DATES:

EXTRA PRACTICES

Sunday November 9th
Sunday December 7th
Sunday February 1st
Sunday March 1st

TENTATIVE: COMPETITION SCHEDULE

12/13- Celebrity: Branson MO- ALL Eagle Teams

2/7-Redline: Kansas City MO- ALL Eagle Teams

3/7-MCDA: Collinsville IL- ALL Eagle Teams

Elite Dance teams will compete at The All Star World Championships in Florida at the end of the season if they receive a bid. (Date TBA)

Please note that competitions are required for team athletes. You do not get to pick and choose what competitions your athlete participates in.

Athletes that are interested in competing additionally at studio dance competitions MAY be allowed. It will depend on the competition.



Contact Us

eagleelitecheerleading@gmail.com

www.eagleelitecheer.com



EAGLE ELITE

Season 12

DANCE TEAM INFO PACKET

BASIC INFO:

FREE CLASSES & CLASS DISCOUNTS

All of the athletes in our year long team program receive 1 free class a week. Athletes are not required to attend extra classes but they are encouraged to help aid with skill development. After using the free weekly class, athletes also receive a discount on additional classes.

-Athletes in our Showcase team program receive a discount on classes while their team is in session.

PRIVATE LESSONS

Private lessons are a great way for your athlete to get one on one attention, and hands on help with their skills. Private lessons are 30 minutes and range between \$25 and \$35 per 30 minutes depending on the coach. Private lessons can be set up directly with a coach, or if you do not have a specific coach in mind they can also be set up through the front desk and gym email. Private lessons are not required. 24 hours notice is required when canceling a lesson or you will still be charged for the lesson and the coaches time.



Contact Us

eagleelitecheerleading@gmail.com

www.eagleelitecheer.com



EAGLE ELITE

Season 12

DANCE TEAM INFO PACKET

FAQS

HOW DOES THE GYM COMMUNICATE?

The gym will primarily communicate with you through email. It is very important that you read through the emails we send out. We will also post on facebook and instagram and you can always find our schedule on the website.

WHAT IS THE ATTENDANCE POLICY?

During the summer we run “make up hours” if you miss a practice your child is able to make up those missed hours in an appropriate class or other team practice. Make up hours end in August(choreography is mandatory). After summer, athletes are given 3 unexcused absences. Extra practices and practices the week before a competition are MANDATORY. If your child misses a mandatory practice or exceeds their unexcused absences the coaches may make the decision to pull your child from the upcoming competition, this decision will be on a case by case basis to make the best decision for the team as a whole. If an Elite or Prep team member misses a MANDATORY practice there will be a \$25 fine. This is a team sport and it is very important to the success of the team that all athletes are in attendance for their practices. Further information including what counts as excused absences can be found in the handbook.



Contact Us

eagleelitecheerleading@gmail.com

www.eagleelitecheer.com



EAGLE ELITE

Season 12

DANCE TEAM INFO PACKET

FAQS

WHEN WILL I KNOW INFO ABOUT COMPETITIONS?

We do our very best to get you as much information as possible as soon as we can. Once we get information from the event producers we will send it out immediately. Oftentimes competitions won't send out a preliminary schedule until 2 weeks prior to the competition, and we won't receive the final schedule until the week of.

WHAT DO I DO ON COMPETITION DAYS?

Before each competition you will get an email with all important information for that competition. You will be given a meet time, your child should be completely competition ready at this time (hair/makeup done/ uniform on/ bags and jackets left with a parent) We will have an Eagle Elite banner to meet at, or we will have a coach stationed at the front of the venue to collect your child and take them to the warm up area. It is very important to have your child meet us on time and completely ready.

IS THERE REQUIRED COMP MAKEUP?

Dance teams will have required competition make up that they will need to wear to match for each competition. This will be released in an email once costumes are set.



Contact Us

eagleelitecheerleading@gmail.com

www.eagleelitecheer.com



EAGLE ELITE

Season 12

DANCE TEAM INFO PACKET

FAQS

WHAT IS A “BID” AND WHAT HAPPENS IF A TEAM GETS A BID?

A “Bid” is like an invitation to a Nationals competition. If your child is on a bid eligible team, meaning an Elite Cheer team, an Elite Dance team, or an Open team, you should be prepared for your child's team to compete at an end of season Nationals competition in Florida. If you do not want your child to be on a bid eligible team, and are against going with the team to an end of season competition you should let the coaches know at tryouts that you would not like your child to be placed on a bid eligible team..

DO WE ALLOW DANCERS TO PARTICIPATE IN OTHER SPORTS?

Yes, we allow participation in school sport teams/ other activities. HOWEVER, we ask our members to split their time evenly if they are participating in other teams and to make Eagle Elite a priority. Athletes will still be required to be present at all mandatory practices. All Elite Team athletes are expected to treat Eagle as their priority, missing an entire practice for other sports practices or activities will be counted as unexcused (extra practices and practices the week of a competition are mandatory for everyone)

While WE allow our athletes to participate in other sports, we have found that not all other sports and coaches allow athletes to participate in both.



Contact Us

eagleelitecheerleading@gmail.com

www.eagleelitecheer.com