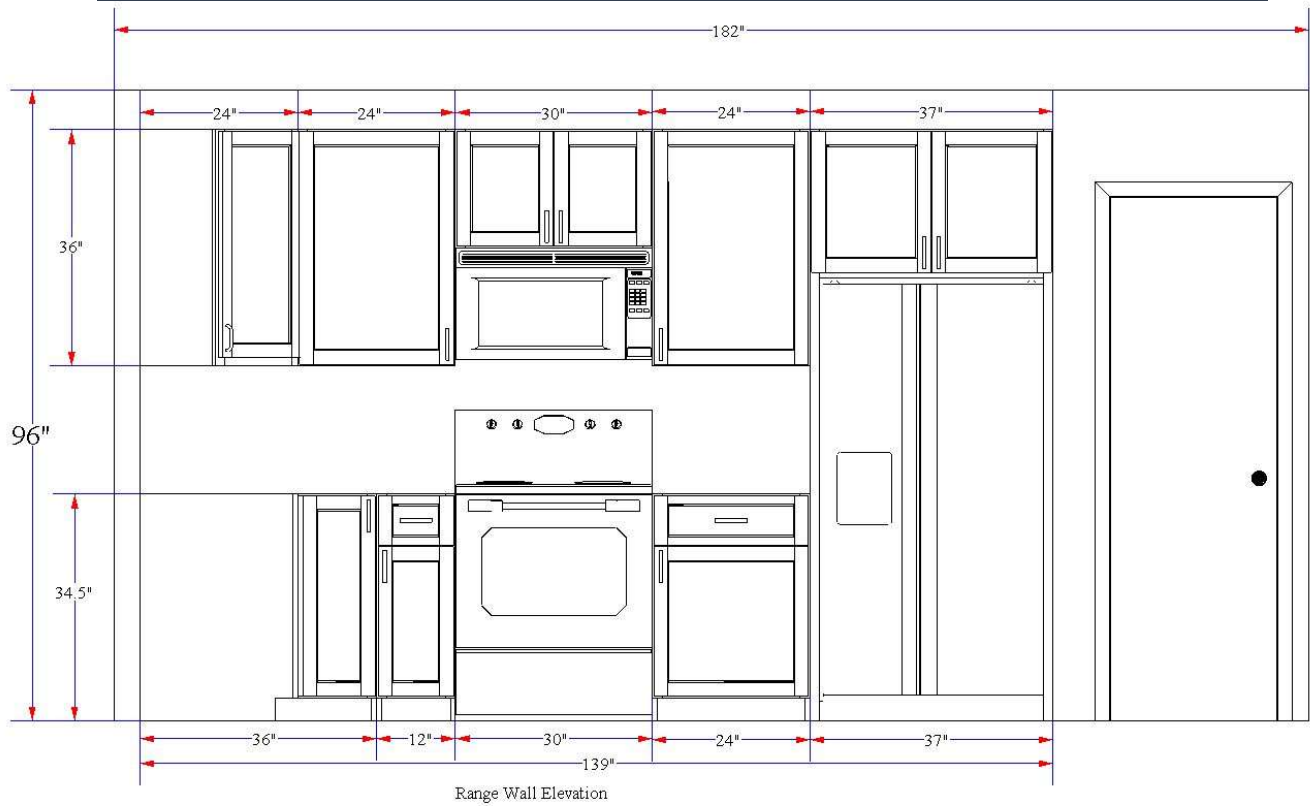


# How to Measure Cabinets



Crayne Cabinets, LLC

## Kitchen Cabinet Types:

- Base cabinets - 24" Deep x 34" High
- Wall cabinets - 12" Deep x 30" or more and less above refrigerators or ranges
- Pantries – 12+” Deep x 84” tall



**BASE CABINETS**



**PANTRY CABINETS**



**WALL CABINETS**

## Cabinet widths:

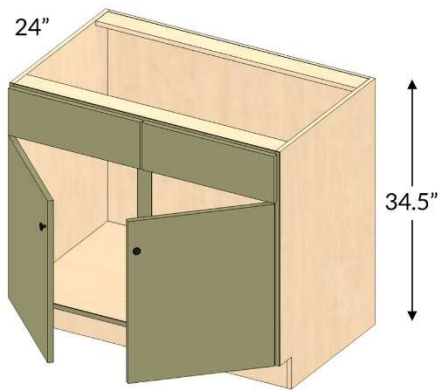
Measure the width of each base cabinet individually, from the outer edge of one side to the outer edge of the other side. Standard cabinet widths usually come in 3-inch increments, such as 12 inches, 15 inches, 18 inches, 24 inches, 30 inches, 36 inches, etc.

Gaps between cabinets or walls are often closed with filler panels. Note their width and height.

## Types of Base Cabinets:

- “Normal” base cabinets have drawers and doors.
- Drawer Cabinets have stacks of drawers.
- Sink bases (below) have drawer fronts, but no drawers to make room for the sink.

- Lazy Susans make use of trapped corners with an internal carousel shelf.



## Types of Wall Cabinets:

- “Normal” wall cabinets are 30” high with a gap to the ceiling.
- Tall wall cabinets may reach the ceiling and have Crown Molding.
- Some have Toppers – short wall cabinets that fill the gap to the ceiling.
- Shorter wall cabinets fit above refrigerators and ranges.

## Shopping lists:

Make a list with all your information and to share with potential suppliers. This will greatly improve your communication for a rough estimate. Before an order is placed, a professional should visit your home to confirm all details including measurements.

## Conclusion:

Kitchen and bath renovations are a big investment for homeowners. They have the highest return-on-investment of all home improvement projects and really make your home more enjoyable. Many homeowners have been through this process. There is a dizzying amount of information on this topic and you may get overwhelmed. If so, get help from a professional.

Rick Crayne

Owner: Crayne Cabinets, LLC

© Richard Crayne 2023

CrayneCabinets.Com