

Produced by the  
Board of Directors  
of the Muir Woods  
Park Community  
Association



February 2022

## **MWPCA Membership & Activities**

New Board Members | Holiday Party | Workday

By now, everyone should have received their annual membership letter. This time we're not just requesting that people pay their dues, we're also asking members to become involved in creating and managing new activities. Hoping that the pandemic will be subsiding to a point where we can gather for activities outdoors safely and in comfort, plans are underway to expand the programming at our community clubhouse.

Take a look at the second page of the membership letter, and you'll see a list of fun activities the MWPCA Board has come up. Return the page with your dues as we want to gauge interest, plus we ask that you send in some ideas of your own! Thank you to all sustaining and new members who are the fabric of this wonderful community.

**All members are welcome to attend our Board Meetings, held on the second Thursday of the Month at 7 pm. Send a note for the Zoom Link to Linda Sawtelle at [mwpca@mounttam.org](mailto:mwpca@mounttam.org)**

**Welcome New MWPCA Board Members**



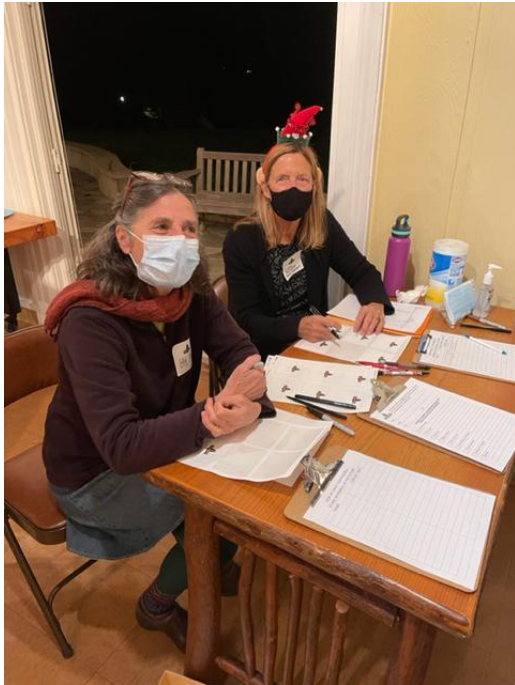
**Ben Livesey** Ben lives on Ridge Lane with wife Nicola and three children, Joseph, Ava and Theodore, and their dog Franci. They've lived on the Mountain for eight years and in Mill Valley for 12. Nicola and Ben were born and raised in the North of England where the countryside is similar to Marin, albeit a little wetter. The two have spent most of their careers in journalism and communications, Nicola in health, consumer and fashion, and Ben in business and finance. Ben says: "The Ridge neighborhood is a wonderful, friendly and inspiring community that we feel incredibly lucky to be a part of."



For the past 17 years, **Enzo Garcia** has enjoyed life on the mountain. A graduate from the University of Michigan's School of Natural Resources and Environment, he is at home outside observing and experiencing the magnificent myriad of flora, fauna and landscapes that life on the mountain shares.

Professionally, Enzo spends his time writing, performing and recording music and is most widely known for his weekly multi-instrumental family concert, "Breakfast with Enzo."

He is honored to serve on the board of the MWPCA and looks forward to contributing to its continued success.



*We had a very nice turnout at our December 9th Holiday and Election Party. Neighbors gathered for snacks and drinks and holiday cheer, then heard the Board election results.*

### **Local Montessori School Rents MWPCA Clubhouse**

During the wide spread rains earlier this winter, a terrible mudslide slammed into the Guidepost Montessori School in Mill Valley and caused damage that made the school close down. Administrators for the school contacted Linda Sawtelle who began a complicated and yet successful process that culminated in them renting our Clubhouse during the school week as repairs are being done to their building. As many know, the MWPCA relies on rentals to help maintain our property and activities, and the level of rentals had slowed considerably during the pandemic. The school is thrilled, as are we.

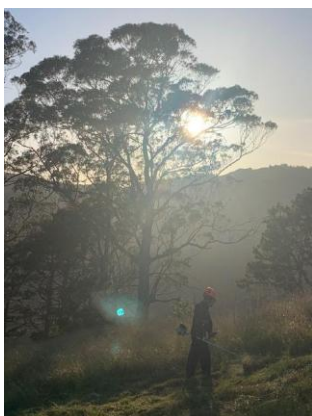


### Work Days At The Club

Our Clubhouse is the meeting place and physical centerpiece of our Community. Join us at Work Days! They are fun and a great way to get to know your neighbors. That's our President Linda Sawtelle with the 'vac!

After the rain...rainbows





### Get Involved!

It's so nice to get to know your neighbors and help out in our gorgeous community.

Joe Livesey spent part of his summer volunteering for the MWPCA by cutting the grass and clearing dry weeds. We are only stewards of our land and this help is so appreciated!

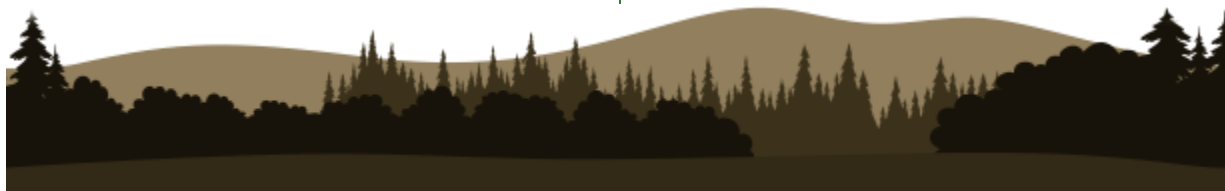
Contact us at [mwpca@mttam.org](mailto:mwpca@mttam.org) if you'd like to join the fun.

## Emergency Contacts

While not complete, below please find a list of emergency services. Also listed are our local health agencies. Remember, **911** is always the best number to dial in an emergency.

### Emergency & County Services

- 911
- [Marin County Sheriff](#)
- [Nixle Alerts](#)
- [Alert Marin](#)
- [Marin County Health & Human Services](#)
- [Marin County Fire Department](#)
- [Mental Health Services](#)
- [Aging & Adult Assistance](#)
- [Food Resources](#)
- [MWPCA Board of Directors](#)



**MWPCA**

40 Ridge Avenue at Panoramic

[MWPCA@MountTam.org](mailto:MWPCA@MountTam.org)

[www.MountTam.org](http://www.MountTam.org)

Editor: Nancy Gribler

