



A TOUCH OF STONE

2024

# MARCH NEWSLETTER

DEAR STONE ENTHUSIASTS,

FEBRUARY WENT BY LIKE A FLASH BUT LIFETIME MEMORIES WERE MADE. ALL I CAN SAY IS "MY BIG FAT GREEK WEDDING FAMILY" HAS NOTHING ON US!!! :)

HAVING FAMILY HERE FOR 10 DAYS WAS JUST WHAT I NEEDED TO GET THIS AWESOME YEAR CRANKING. IT IS INCREDIBLE WHAT OUR LOVED ONES DO TO YOUR SOUL! I AM BLESSED FOR SURE. ❤️

I ALSO JUST WRAPPED UP MY VISIT TO THE NKBA (NATIONAL KITCHEN AND BATH ASSOCIATION) ANNUAL SHOW IN VEGAS. THIS SHOW LAUNCHES NEW COLOR LINES, NEW PRODUCTS AND ALSO GIVES YOU GREAT IDEAS OR INSPIRATION.. WELL I CAME ACROSS A FEW THINGS AND IDEAS THAT I CANNOT WAIT TO INCORPORATE SOME OF MY IDEA IN YOUR NEW PROJECTS THIS COMING YEAR. I CAN'T WAIT TO SHARE AS THEY COME TO LIFE.

MARCH IS ALWAYS A FUN MONTH BECAUSE THE FIRST SIGNS OF SPRING ALWAYS GET PEOPLE INSPIRED TO GET SPACES REFRESHED. PERFECT TIMING TO START THINKING ABOUT THESE PROJECTS IF YOU WANT TO GET THEM DONE BEFORE THE SUMMER FUN!

WE ARE ALSO BOOKING FAST OUR APPOINTMENTS TO OUR NEW SHOWROOM ON WESTSIDE ATLANTA. SO DON'T FORGET TO SET UP YOURS SO WE CAN SHOW YOU A GLIMPSE OF WHAT WE ARE DOING THERE...

*xoxo*  
*Marylene Briere*



**Rocking March Events:**  
**Atlanta Homes & Lifestyles**  
Tour of Kitchens  
March 16- March 17, 2024



# ON THE EDGE OF STYLE

Edge profile is always something that or a client forget to think about or is very focus on during the design pros. There are some basic edges that client use very often: polished edge, beveled edge and 1/4" rounded edge. These edges just keep the counter top simple and clean lined.



**Dupont Edge**



**Cove Ogee Edge**



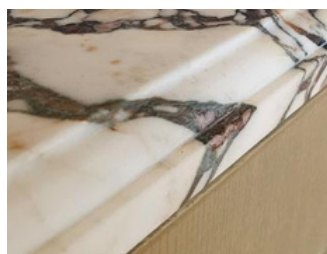
**Polished Edge**

To add depth to your counters, we suggest building up the stone. This is only done on the edges (about 3" deep where the edges are) and this process gives the illusion that the material is thicker than it actually is.

The depth can be anything you would like but always take in consideration if this will raise the height of your counters all together or if it will drop down and interfere with the front of the drawers. Also always remember that if it is a consideration from the start, notify your designer or cabinet maker as they can make any adjustments ahead of time if they know in advance.



**Ogee with Polished Edge on Curve Counters**



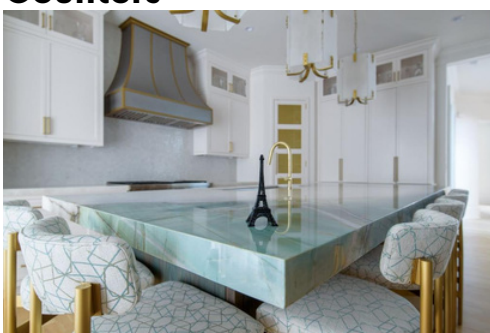
**Dupont with Polished Edge 2 cm**



**Dupont with Polished Edge 3 cm**



**Double Ogee Edge**



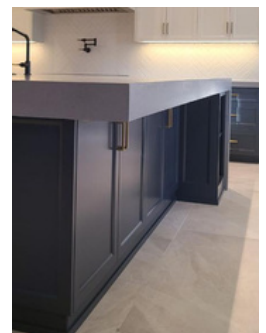
**Laminated Miter Edge 3"**



**Laminated Miter Edge 2.5"**



**Laminated Miter Edge 2"**

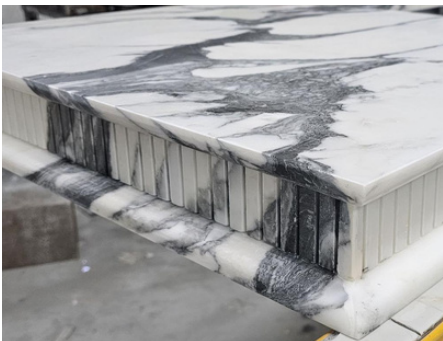


**Laminated Miter Edge 5"**



## EDGY ELEGANCE

Finally, there are some projects that require the fancy and these make my heart sing. I love doing different combinations of elements together. Some of the combinations we have done are shown on the pictures but we are always in search of new dimensions and combinations. So let me know what you have in mind and I certainly will do my best to make it happen. 💕



**Reverse Ogee Over Reeded Flat Piece & Single Ogee 2 cm**



**Dupont Ogee Over Flat Piece & Full Bull Nose 2 cm**



**Quadruple Ogee Built Up Edge 3cm**



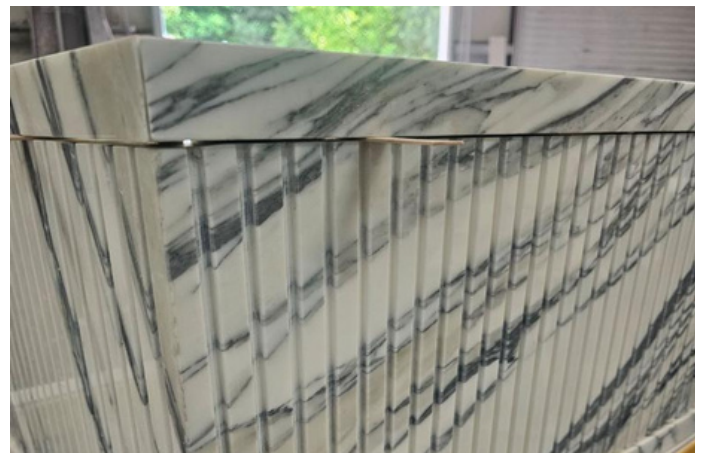
**Polished Edge Full Bull Nose Sides 3 cm  
\*Metal brass in between**



**Polished Edge Full Bull Nose Apron 2 cm**



**Custom Lay Out Mirror Cabinetry**



**Polished Edge 12" Reeded Apron Over Polished Edge 3 cm**

# NEWSLETTER



## DESIGNER: THE DESIGNERY

### **Question 1: What makes you choose between stone and quartz?**

It all depends on the overall look we are going for. Overall we prefer a natural stone, but understand there are certain times a quartz material makes more sense because of durability. If we are counting on the stone to be the "focal point" or "star of the design" we always go with a natural stone, however if we are working on a project that is used heavily, with lots of entertaining and young children we have a lot of clients that lean towards to the quartz options.

### **Question 2: How do you incorporate stone or quartz in your designs?**

We obviously use it on countertops but also often take the stone up the walls for backsplashes and even around windows. We also love to use stone on shower curbs, jambs and in niches.

### **Question 3: What Influences or inspires your design choices?**

Gosh, everything. Our eyes are always open for inspiration as it relates to color, texture and overall vibe. Nature, travel, fashion, art...all of it!

### **Question 4: Do you have a favorite stone and what is the name?**

Right now my favorite is Antradite, a beautiful marble we used in my personal home at the Living Room Bar. So much movement and the colors are so beautiful. It really makes the space.

### **Question 5: When choosing a stone or a quartz, do you choose first the color pallet or the movement of the stone? Which is predominant in your choice?**

Color pallet is always #1 as we always have an idea of the overall vibe we are trying to accomplish. Interestingly, sometimes we select the stone first and then back into the specific cabinetry colors that look best with our stone selection. Movement is also important especially if we know we want something "loud" to make an impact or more "soft" to seamlessly blend with other more dramatic elements surrounding the stone like tile, cabinet color, metal accents, etc.



Photo Credit:  
The Designery +  
A Touch of Stone  
collaborate on  
this curved edge  
marble vanity  
countertop.

# NEWSLETTER



## DESIGNER: THE DESIGNERY

### **Question 6: What is your opinion on manmade products?**

Our hearts and eyes love natural stone but we understand the need for man-made options and think they have come a long way in looking more realistic.

### **Question 7: Have you ever designed a room around a slab just because you loved it even if it was not your original concept? How did you handle that?**

We have definitely let a dramatic, awesome stone lead the way and based other selections around it.

### **Question 8: When you first look at a project do you know immediately what stone you will use, or does it take time?**

It takes time. We design layer by layer, but often by the time we get to the stone selection step, we know it when we see it as far as the winning option for the space.

### **Question 9: What stone has surprised you most when it was installed?**

Taj Mahal Quartzite. We used to think of this as a more fleshy, boring option but last year we had 4 projects use it and they all looked different and all beautiful with all of the stones having a lighter body and beautiful, subtle veining.

### **Question 10: Do you have any predictions on future stone design trends?**

We predict we will see more and more stone incorporated into designs in creative ways. I also predict dramatic stones will be selected more often to really add unexpected impact.

Photo Credit:  
Catmax Photography



For more info visit:  
[the-designery.com](http://the-designery.com)