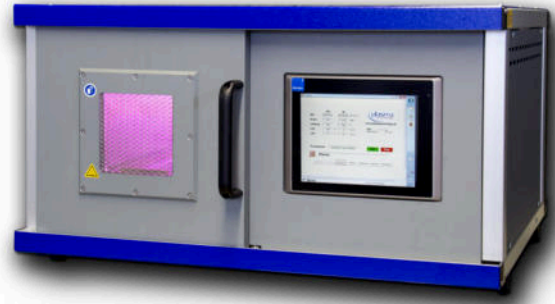




# Plasma systems for laboratories and small series production



Plasma systems comparison chart



Product	Control	Volume	Process monitoring	Process documentation	Savable processes	More process steps	Vaporizer valve	Support by Teamviewer®	Max. quantity of gas channels	Gas supply
SmartPlasma	Small scale automation module with text display	2,4 l	✓	✗	1	✗	✓	✗	1	2/2 Way solenoid valve
SmartPlasma 2 Pro	Small scale automation module with text display	2,4 l	✓	✗	1	✗	✗	✗	1	Mass-Flow-Controller
MiniFlecto®	Micro controller unit with Industrial-PC	2,4 l	✓	✓	100	✓	1	✓*	2	Mass-Flow-Controller
SmartPlasma 10	Small scale automation module with text display	11,5 l	✓	✗	1	✗	✓	✗	1	2/2 Way solenoid valve
SmartPlasma 10 Pro	Small scale automation module with text display	11,5 l	✓	✗	1	✗	✗	✗	1	Mass-Flow-Controller
PlasmaFlecto 10	Micro controller unit with Industrial-PC	11,5 l	✓	✓	100	✓	1	✓*	2	Mass-Flow-Controller
SmartPlasma 30	Small scale automation module with text display	32 l	✓	✗	1	✗	✓	✗	1	2/2 Way solenoid valve
SmartPlasma 30 Pro	Small scale automation module with text display	32 l	✓	✗	1	✗	✗	✗	1	Mass-Flow-Controller
PlasmaFlecto 30	Micro controller unit with Industrial-PC	32 l	✓	✓	100	✓	1	✓*	2	Mass-Flow-Controller
PlasmaActivate Series	PLC with Industrial-PC	> 50 l	✓	✓	100	✓	1	✓*	4	Mass-Flow-Controller

✓ integrated

✗ not available

✓\* System need internet connection

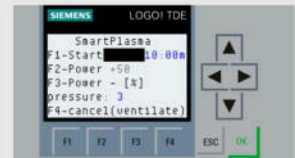


# SmartPlasma 2 / (Pro)



## 🇬🇧 Technical data:

- » Outside dimensions WxHxD: 505 x 255 x 550 mm
- » Inner chamber dimensions WxHxD: 110 x 110 x 200 mm
- » Usable chamber dimensions WxHxD: 110 x 73 x 200 mm  
(Due to the electrode design, not the entire volume can be used)
- » Siemens control unit with process monitoring
- » Integrated webserver (Remotecontrol via network)
- » Adjustable parameters: pump down pressure, stabilization time, process time, process pressure, power
- » Plasma generator: 20 - 50 kHz, 80 W
- » Pro version works with mass-flow-controller





## MiniFlecto®



### Technical data:

- » Outside dimensions WxHxD: 505 x 255 x 550 mm
- » Inner chamber dimensions WxHxD: 110 x 110 x 200 mm
- » Usable chamber dimensions WxHxD: 110 x 73 x 200 mm  
(Due to the electrode design, not the entire volume can be used)
- » Microcontroller board with 8" touch industrial computer for visualisation
- » Software: operator and setup level, recording of process diagrams, storing of process parameters, several process steps during a process possible
- » Adjustable process parameters: time, pressure, power, monitoring tolerances
- » Plasma generator: 20 - 50 kHz, 80 W



Cleaning | Activating | Coating | Antifriction coating | Degreasing | Structuring  
Hydrophobic finishing | Hydrophilic finishing | Oleophobic finishing | Etching

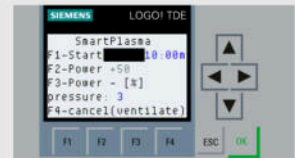


# SmartPlasma 10 / (Pro)



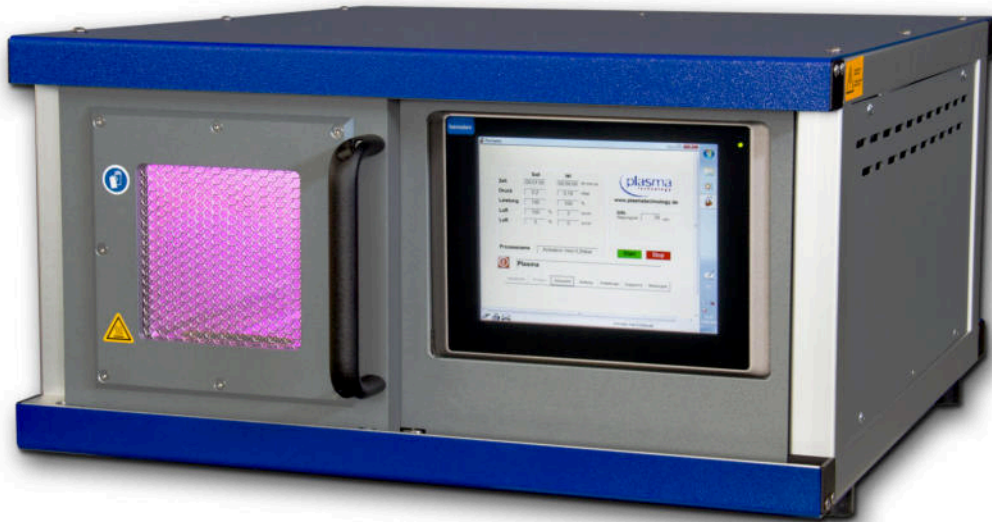
## Technical data:

- » Outside dimensions WxHxD: 575 x 305 x 645 mm
- » Inner chamber dimensions WxHxD: 190 x 190 x 320 mm
- » Usable chamber dimensions WxHxD: 175 x 150 x 320 mm  
(Due to the electrode design, not the entire volume can be used)
- » Siemens control unit with process monitoring
- » Integrated webserver (Remotecontrol via network)
- » Adjustable parameters: pump down pressure, stabilization time, process time, process pressure, power
- » Plasma generator: 20 - 50 kHz, 300 W
- » Pro version works with mass-flow-controller





# PlasmaFlecto 10



## Technical data:

- » Outside dimensions WxHxD: 575 x 305 x 645 mm
- » Inner chamber dimensions WxHxD: 190 x 190 x 320 mm
- » Usable chamber dimensions WxHxD: 175 x 150 x 320 mm  
(Due to the electrode design, not the entire volume can be used)
- » Microcontroller board with 8" touch industrial computer for visualisation
- » Software: operator and setup level, recording of process diagrams, storing of process parameters, several process steps during a process possible
- » Adjustable process parameters: time, pressure, power, monitoring tolerances
- » Plasma generator: 40 - 100 kHz, 300 W



Cleaning | Activating | Coating | Antifriction coating | Degreasing | Structuring  
Hydrophobic finishing | Hydrophilic finishing | Oleophobic finishing | Etching

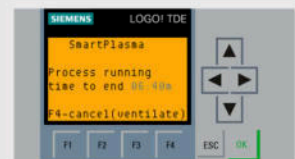
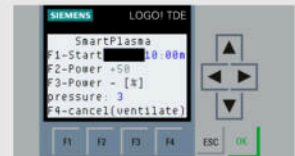


# SmartPlasma 30 / (Pro)



## 🇬🇧 Technical data:

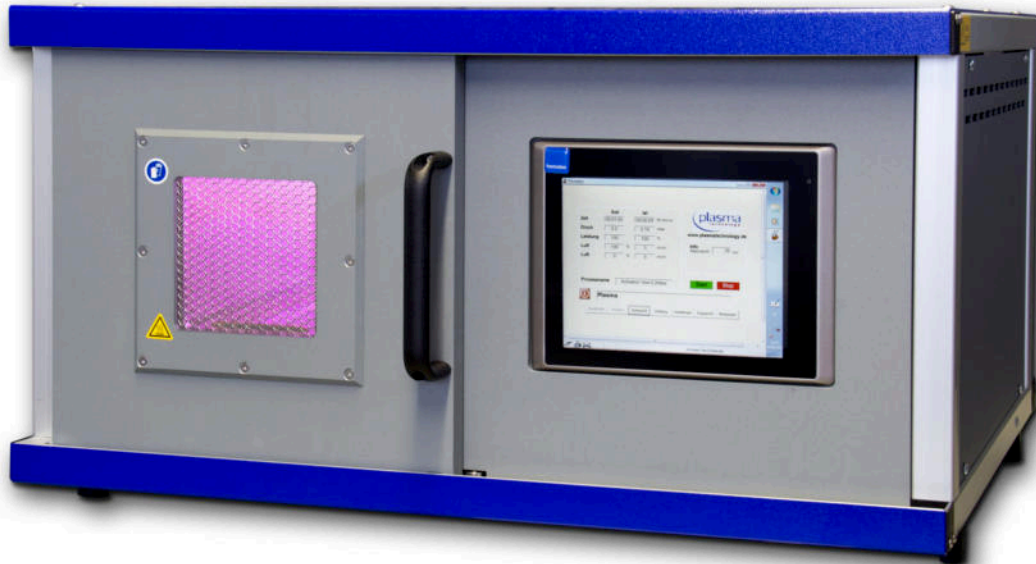
- » Outside dimensions WxHxD: 740 x 415 x 665 mm
- » Inner chamber dimensions WxHxD: 290 x 290 x 380 mm
- » Usable chamber dimensions WxHxD: 275 x 240 x 380 mm  
(Due to the electrode design, not the entire volume can be used)
- » Siemens control unit with process monitoring
- » Integrated webserver (Remotecontrol via network)
- » Adjustable parameters: pump down pressure, stabilization time, process time, process pressure, power
- » Plasma generator: 20 - 50 kHz, 300 W
- » Pro version works with mass-flow-controller



Cleaning | Activating | Coating | Antifriction coating | Degreasing | Structuring  
Hydrophobic finishing | Hydrophilic finishing | Oleophobic finishing | Etching



# PlasmaFlecto 30



## Technical data:

- » Outside dimensions WxHxD: 740 x 415 x 665 mm
- » Inner chamber dimensions WxHxD: 290 x 290 x 380 mm
- » Usable chamber dimensions WxHxD: 275 x 240 x 380 mm  
(Due to the electrode design, not the entire volume can be used)
- » Microcontroller board with 8" touch industrial computer for visualisation
- » Software: operator and setup level, recording of process diagrams, storing of process parameters, several process steps during a process possible
- » Adjustable process parameters: time, pressure, power, monitoring tolerances
- » Plasma generator: 40 - 100 kHz, 600 W



- » Rotary drum for bulk material treatment (optionally)



Cleaning | Activating | Coating | Antifriction coating | Degreasing | Structuring  
Hydrophobic finishing | Hydrophilic finishing | Oleophobic finishing | Etching





# Vacuum pumps

## Rotary vane pumps

Pfeiffer DUO 3M

Pfeiffer DUO 5M

Pfeiffer DUO 10M

Edwards E2M28

## Dry pumps

Edwards nXDS6ic

Edwards nXDS10ic

Edwards nXDS15ic

Edwards nXDS20ic

Ebara EV-A06

Ebara EV-A10