

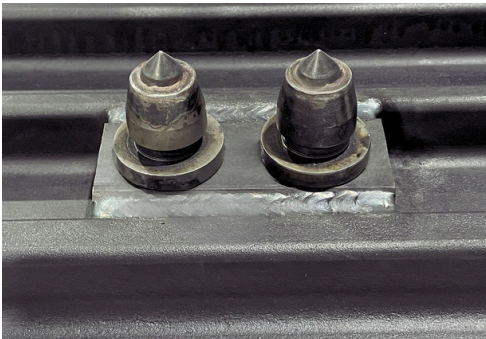
# METAL TRACK STUD

Recently developed at iGRiP, this stud for excavators, bulldozers and forestry machinery equipped with steel tracks have been designed for year-round usage. It is suitable for all steel track applications.

Our “Metal Track” studs are designed to offer improved stability in all directions and increase traction and security on ice, snow, mud, rock and loose or compact terrain. They are easy to install and can be easily removed if they are not necessary to your project. Different models are available to accommodate your specific track requirements.

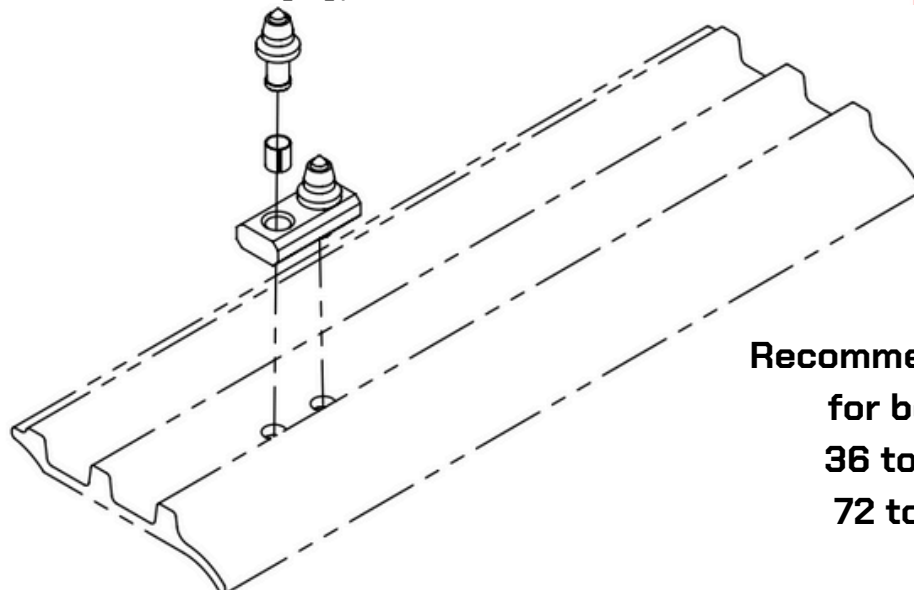
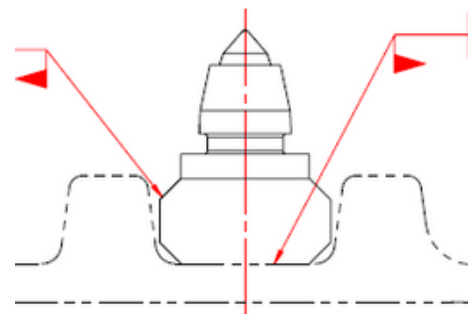


## HOW IT WORKS



A steel block is installed between the lugs of the track which is permanently welded in place. Studs are then inserted into the blocks

The studs are equipped with a sleeve clip which, once installed, prevent the stud from popping out of the block. The studs are also equipped with heavy duty tungsten carbide tips providing penetration and traction on any type of terrain.



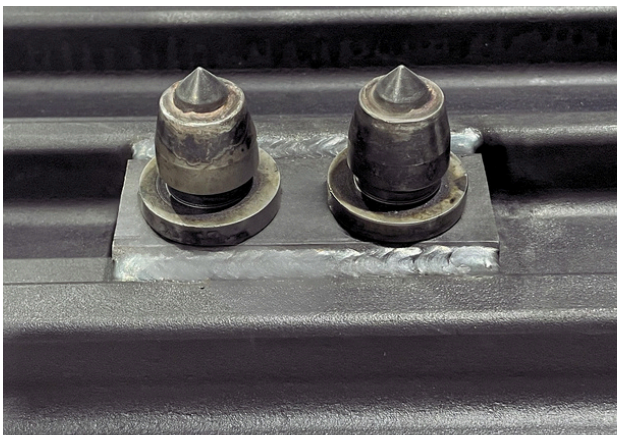
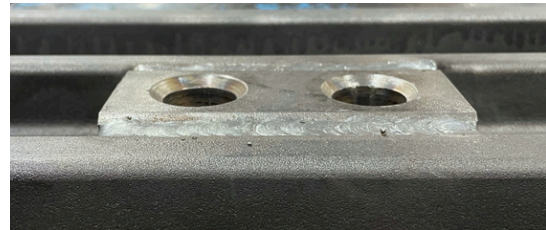
**Recommended quantity  
for both tracks  
36 to 48 blocks  
72 to 96 studs**

# INSTALLATION

**Step 1 :** Using the block as a guide, trace the hole pattern on the track at 2" from the middle bolt. Cut out the pattern at 1" diameter. These holes will allow the studs to snap into the blocks firmly.



**Step 2 :** Place the block on track over the pre cut holes and weld beveled edges to the lugs. The block being permanently fixed should now be flush with the top of the track lugs.



**Step 3 :** Install studs along with sleeved clips into the block housing.

**Step 4 :** Removal of the studs is possible with the use of the tool if so desired.

