

SPIRIT JERSEY®

ORIGINAL. AUTHENTIC.



NEW
**GARMENT
WASHES
& SILHOUETTES**

EXPANDED
**LUXE BRUSHED
COLLECTION**

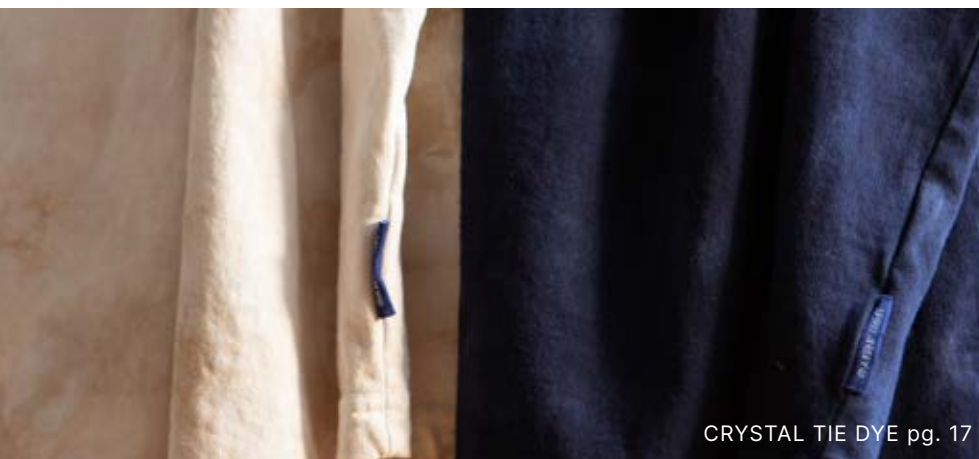
ALL NEW
NATURAL DYES

2025 CATALOG

NEW for 2025

FITS

A variety of new fashion styles have arrived!



CRYSTAL TIE DYE pg. 17



GOOD SPIRIT CREW pg. 42

WASHES

We heard your requests – check out the new tie dyes for '25!

COLORS

From our NEW Natural Dyes to seasonal updates – the 2025 assortment is a range of beautiful classics, brights, and neutrals.



FONTS

Playful script and fun retro fonts lead the trend this season.

NEW

WOMEN'S SHORT SLEEVE TEE pg. 48



Scan to Shop Now!

Snap this QR code to browse our latest collections for College, Resort, and Lifestyle on NuOrder, our wholesale platform.







NEW

NATURAL DYE

Spirit Jersey® uses natural, Earth friendly dyes that are derived from naturally occurring soil, mineral, and vegetable pigments. These lower impact dyes use less water, carbon, and synthetic chemicals compared to conventional synthetic colors.

We embrace the subtle variations in color – a testament to the unique artistry of nature's touch. Each garment is one-of-a-kind, just like you.

ARTWORK: J0119SMS569 – Back 7892-4M (T2-3/C)

CONTENTS

08 OUR PROCESS

09 ORIGINALS

38 SPECIALTY

46 T-SHIRTS

50 SHORTS

52 FLEECE

58 CUDDLE

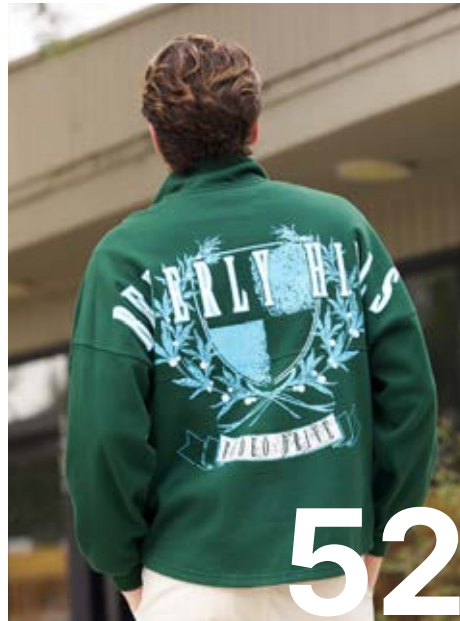
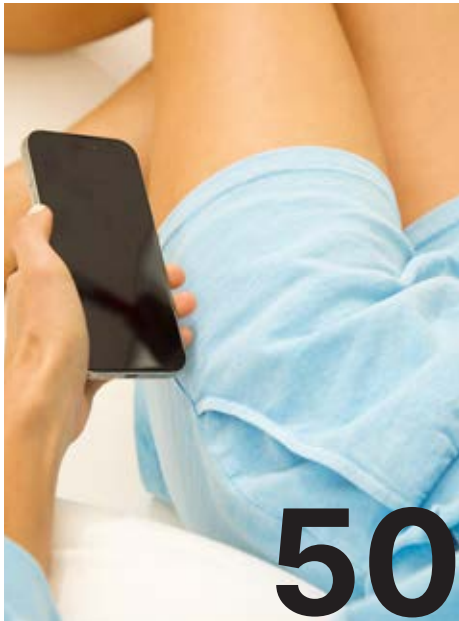
62 LOUNGE

70 AQUA

72 YOUTH

76 ARTWORK

84 COLORS & WASHES



08 OUR PROCESS

1

**Select a
Silhouette**



2

**Pick Your
Garment Color**



3

Add Desired Art



4

Express Yourself!

ARTWORK: J0470SMS650 – Back 8466-4M (T1-5/C)



ORIGINALS09

BLACK	001
MAROON	608
GARNET	628
RED 14	611
CLEMENTINE	826
NAT RED	8NA
GOLDEN ROD	712
NAT YELLOW	7NA
TANNIN	243
NAT GREEN	3NA
KELLY GREEN	351
HUNTER GREEN	918
STORM GRAY	032
ICE BLUE	470
NAT BLUE	4NA
SEA SPRAY	475
ROYAL BLUE	438
MOONLIGHT	958
MIDNIGHT	416
DEEP INDIGO	414
COLLEGE PURPLE	512
NAT VIOLET	5NA
PRIMROSE	661
SUNSET CORAL	840
PINK SORBET	689
SOFT PEARL	692
CHALK	271
WHITE	100



Color shown: NAT GREEN

ORIGINAL CREW NECK SPIRIT JERSEY®

STYLE NO. J0470GD / J0470GD-U

DETAILS Trademarked garment. 100% heavyweight cotton, garment dyed, drop shoulder, center front and back yoke detail with curved hem. USA made available.

FIT Oversized

ARTWORK: A. J0470SMS644 – Back 8096-4M (T1-1/C), Bottom Panel 27229-24B (T1-3/C), B. J0470SMS580 – Back 8231-4M (T2-2/C), C. J0470SMS639 – Back 8264-4S (T1-4/C), D. J0470SMS660 – Back 8460-4 (T1-1/C)





Color shown: MOONLIGHT DIP

**HEATHER GREY CREW NECK
SPIRIT JERSEY®**

STYLE NO. **HG470PD**

DETAILS Trademarked garment. 90% yarn dye heavyweight cotton / 10% poly, drop shoulder, center front and back yoke detail with curved hem.

FIT Oversized



Heather Grey
060

**HEATHER GREY OMBRE DIP CREW
NECK SPIRIT JERSEY®**

STYLE NO. **HG470PDOD**

DETAILS Trademarked garment. 90% yarn dye heavyweight cotton / 10% poly with novelty wash*, drop shoulder, center front and back yoke detail with curved hem.

FIT Oversized

*Each garment is processed by hand. Garments may vary in colors & shades.



Moonlight Dip
D64



Oxford Dip
D74



ARTWORK: HG470SMS632 – Front 27594-24F (T1-5/C)

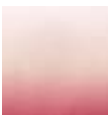
NEW



Color shown: TWILIGHT FADE



Twilight Fade
D76



Soft Rose Fade
D77

HORIZONTAL FADE CREW NECK SPIRIT JERSEY®

STYLE NO. **J0470HF**

DETAILS Trademarked garment. 100% heavyweight cotton with a novelty wash*, drop shoulder, center front and back yoke detail with curved hem.

FIT Oversized

*Each garment is processed by hand. Garments may vary in colors & shades.

ARTWORK: J0470SMS630 – Back 8496-4M (T1-2/C)



NEW





Color shown: LIGHT TEA STAIN TIE DYE

CRYSTAL DYE CREW NECK SPIRIT JERSEY®

STYLE NO. **J0470CD**

DETAILS Trademarked garment. 100% heavyweight cotton with a novelty wash*, drop shoulder, center front and back yoke detail with curved hem.

FIT Oversized

*Each garment is processed by hand. Garments may vary in colors & shades.



Moonlight TD
C31



LT Tea Stain TD
TB7

ARTWORK: J0470SMS640 – Back 8500-4 (T1-4/C)

NEW

Available
Spring 2025



WATERCOLOR CREW NECK SPIRIT JERSEY®

STYLE NO. **J0470WC**

DETAILS Trademarked garment. 100% heavyweight cotton with a novelty wash*, drop shoulder, center front and back yoke detail with curved hem.

FIT Oversized

*Each garment is processed by hand. Garments may vary in colors & shades.

ARTWORK: J0470SMS641 – Back 8313-4M (T1-1/C)



Watercolor
TB8



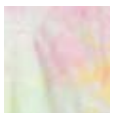
PASTEL RAINBOW TIE DYE CREW NECK SPIRIT JERSEY®

STYLE NO. **J0470PR**

DETAILS Trademarked garment. 100% heavyweight cotton with a novelty wash*, drop shoulder, center front and back yoke detail with curved hem.

FIT Oversized

*Each garment is processed by hand. Garments may vary in colors & shades.



Pastel RB TD
T96

Available
Spring 2025



V-America TD
VAO

V-TIE DYE CREW NECK SPIRIT JERSEY®

STYLE NO. **J0470TV / J0470TV-U**

DETAILS Trademarked garment. 100% heavyweight cotton with a novelty wash*, drop shoulder, center front and back yoke detail with curved hem.
USA made available.

FIT Oversized

*Each garment is porcessed by hand. Garments may vary in colors & shades.

ARTWORK: J0470SMS583 – Back 8219-4 (T1-1/C)

NEW



NEW





WATER LINE DYE CREW NECK SPIRIT JERSEY®

STYLE NO. **J0470WL**

DETAILS Trademarked garment. 100% heavyweight cotton with a novelty wash*, drop shoulder, center front and back yoke detail with curved hem.

FIT Oversized

*Each garment is processed by hand. Garments may vary in colors & shades.

ARTWORK: J0470SMS643 – Back 8095-4 (T2-3/C)



Water Line
TD
TB5





MINERAL WASH CREW NECK SPIRIT JERSEY®

STYLE NO. **J0470MI**

DETAILS Trademarked garment. 100% heavyweight cotton with a novelty wash*, drop shoulder, center front and back yoke detail with curved hem.

FIT Oversized

*Each garment is processed by hand. Garments may vary in colors & shades.

ARTWORK: J0470SMS367 – Back 4139-2X (J1-1/C)



Mineral Black
MBK

BLACK	001
MAROON	608
GARNET	628
RED 14	611
CLEMENTINE	826
NAT RED	8NA
GOLDEN ROD	712
NAT YELLOW	7NA
TANNIN	243
NAT GREEN	3NA
KELLY GREEN	351
HUNTER GREEN	918
STORM GRAY	032
ICE BLUE	470
NAT BLUE	4NA
SEA SPRAY	475
ROYAL BLUE	438
MOONLIGHT	958
MIDNIGHT	416
DEEP INDIGO	414
COLLEGE PURPLE	512
NAT VIOLET	5NA
PRIMROSE	661
SUNSET CORAL	840
PINK SORBET	689
SOFT PEARL	692
CHALK	271
WHITE	100



**AVAILABLE IN
ALL COLORS**



Color shown: SEA SPRAY



Color shown: BLACK

LIGHTWEIGHT CREW NECK SPIRIT JERSEY®

STYLE NO. **J8470GD**

DETAILS Trademarked garment. 100% lightweight cotton, garment dyed, drop shoulder, center front and back yoke detail with curved hem.

FIT Oversized

ARTWORK: J8470SMS642 – Back 8097-4S (T1-1/C)

RECYCLED POLY CREW NECK SPIRIT JERSEY®

STYLE NO. **JB470GD**

DETAILS Trademarked garment. 60% heavyweight cotton / 40% recycled poly, drop shoulder, center front and back yoke detail with curved hem.

FIT Oversized

*Unavailable in: White, Chalk, and Soft Pearl.

AVAILABLE IN ALL COLORS

Color shown: SEA SPRAY



CROPPED SPIRIT JERSEY®

STYLE NO. **J0119GD**

DETAILS Trademarked garment. 100% heavyweight cotton, garment dyed, drop shoulder, center front and back yoke detail with cropped raw hem.

FIT Oversized / Cropped

ARTWORK: J0119SMS575 – Front 27539-24F (T1-6/C)



Color shown: SOFT PEARL

CROPPED HOODIE SPIRIT JERSEY®

STYLE NO. **J0121GD**

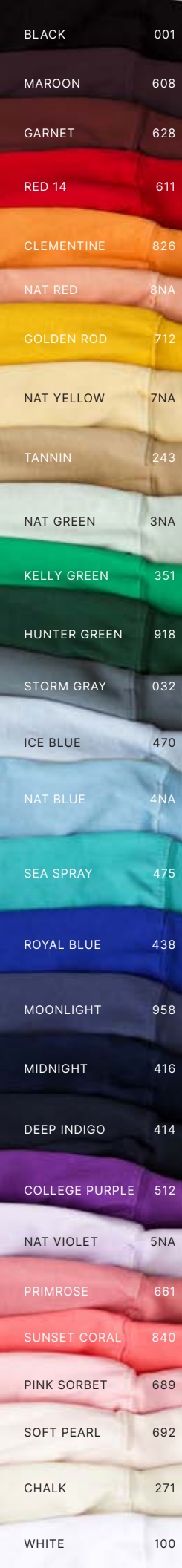
DETAILS Trademarked garment. 100% heavyweight cotton, garment dyed, drop shoulder, center front and back yoke detail with hood and white cord. cropped raw hem and ribbed band.

FIT Oversized / Cropped

ARTWORK: J0121SMS631 – Front 28084-24F (J1-1/C)

© SPIRIT JERSEY® 2025

BLACK	001
MAROON	608
GARNET	628
RED 14	611
CLEMENTINE	826
NAT RED	8NA
GOLDEN ROD	712
NAT YELLOW	7NA
TANNIN	243
NAT GREEN	3NA
KELLY GREEN	351
HUNTER GREEN	918
STORM GRAY	032
ICE BLUE	470
NAT BLUE	4NA
SEA SPRAY	475
ROYAL BLUE	438
MOONLIGHT	958
MIDNIGHT	416
DEEP INDIGO	414
COLLEGE PURPLE	512
NAT VIOLET	5NA
PRIMROSE	661
SUNSET CORAL	840
PINK SORBET	689
SOFT PEARL	692
CHALK	271
WHITE	100



AVAILABLE IN ALL COLORS

Color shown: MIDNIGHT



V-NECK SPIRIT JERSEY®

STYLE NO. **J1590GD**

DETAILS Trademarked garment. 100% soft combed cotton, garment dyed, v-neck line, drop shoulder, and back yoke detail with curved hem.

FIT Oversized

NEW



Color shown: SUNSET CORAL / SEA SPRAY

NEW



Color shown: PINK SORBET / MOONLIGHT

HORIZONTAL OMBRE V-NECK SPIRIT JERSEY®

STYLE NO. **J1590HO**

DETAILS Trademarked garment. 100% soft combed cotton with novelty wash*, v-neck line, drop shoulder, and back yoke detail with curved hem.

FIT Oversized

*Each garment is processed by hand. Garments may vary in colors & shades.

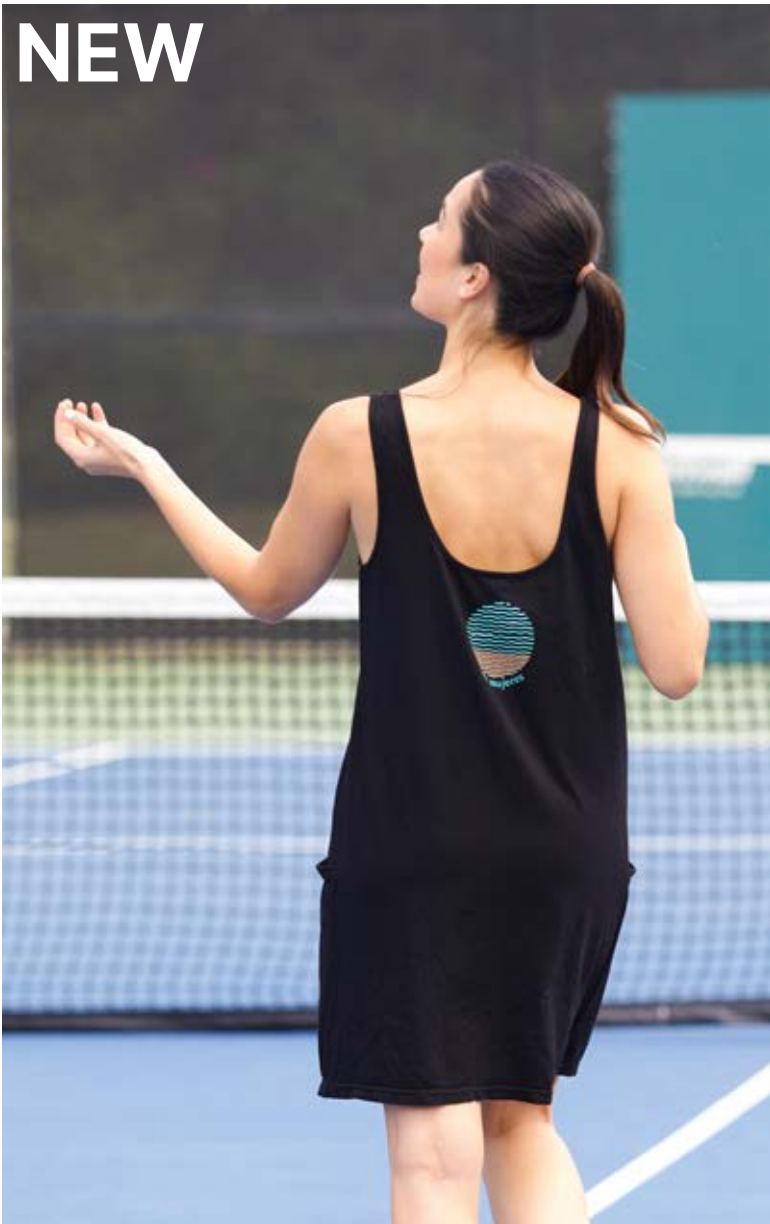


Sunset Coral /
Sea Spray
D82



Pink Sorbet /
Moonlight
D81

BLACK	001
MAROON	608
GARNET	628
RED 14	611
CLEMENTINE	826
NAT RED	8NA
GOLDEN ROD	712
NAT YELLOW	7NA
TANNIN	243
NAT GREEN	3NA
KELLY GREEN	351
HUNTER GREEN	918
STORM GRAY	032
ICE BLUE	470
NAT BLUE	4NA
SEA SPRAY	475
ROYAL BLUE	438
MOONLIGHT	958
MIDNIGHT	416
DEEP INDIGO	414
COLLEGE PURPLE	512
NAT VIOLET	5NA
PRIMROSE	661
SUNSET CORAL	840
PINK SORBET	689
SOFT PEARL	692
CHALK	271
32	
WHITE	100



Color shown: BLACK



WOMEN'S FLOWY TANK DRESS

STYLE NO. **J2043GD**

DETAILS 100% soft combed cotton, sleeveless short tank dress with pockets.

FIT Relaxed

ARTWORK: J2043SMS594 – Back 8285-4-3 (T1-2/C)

AVAILABLE IN
ALL COLORS



Color shown: WHITE

WOMEN'S BOXY TEE

STYLE NO. **J2597GD**

DETAILS 100% soft combed cotton, garment dyed, short sleeve, drop shoulder, center front and back yoke detail with cropped raw hem.

FIT Oversized

ARTWORK: J2597SMS647 – Front 27681-24F (T1-4/C)





Color shown: SUNSET CORAL

TONAL RESIST COLOR BLOCK CREW NECK SPIRIT JERSEY®

STYLE NO. **J0270TRGD**

DETAILS Trademarked garment. 100% heavyweight cotton body with contrast yoke 50% heavyweight cotton / 50% poly, garment dyed, drop shoulder, center front and back yoke detail with curved hem.

FIT Oversized

*Unavailable in: White, Chalk, Soft Pearl, and Natural Dyes.

© SPIRIT JERSEY® 2025

BLACK 001

MAROON 608

GARNET 628

RED 14 611

CLEMENTINE 826

GOLDEN ROD 712

TANNIN 243

KELLY GREEN 351

HUNTER GREEN 918

STORM GRAY 032

ICE BLUE 470

SEA SPRAY 475

ROYAL BLUE 438

MOONLIGHT 958

MIDNIGHT 416

DEEP INDIGO 414

COLLEGE PURPLE 512

PRIMROSE 661

SUNSET CORAL 840

PINK SORBET 689

MAROON	608
GARNET	628
RED 14	611
CLEMENTINE	826
GOLDEN ROD	712
TANNIN	243
KELLY GREEN	351
HUNTER GREEN	918
STORM GRAY	032
ICE BLUE	470
SEA SPRAY	475
ROYAL BLUE	438
MOONLIGHT	958
MIDNIGHT	416
COLLEGE PURPLE	512
PRIMROSE	661
SUNSET CORAL	840
PINK SORBET	689
SOFT PEARL	692
CHALK	271



NEW

**Available
Spring 2025**



Color shown: RED 14

DYE GAIN STRIPE CREW NECK SPIRIT JERSEY®

STYLE NO. **J0470DSGD**

DETAILS Trademarked garment. 100% heavyweight, garment dyed, drop shoulder, center front and back yoke detail with curved hem.

FIT Oversized

*Unavailable in: Black, Deep Indigo, White, and Natural Dyes.

ARTWORK: J0470SMS635 – Back 8307-4S (T1-1/C)



38 SPECIALTY



Color shown: MIDNIGHT SPARKLE

SPARKLE CREW NECK SPIRIT JERSEY®

STYLE NO. **J0470SK**

DETAILS Trademarked garment. 100% heavyweight all over sparkle cotton, drop shoulder, center front and back yoke detail wth curved hem.

FIT Oversized

ARTWORK: J0470SMS335 – Back 4175-2 (T2-3/C)



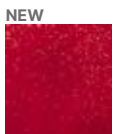
Black Sparkle
BKS



Midnight Sparkle
N18



Storm Gray
Sparkle
N38



Red Gold
Sparkle
N09



Pool Blue
Sparkle
PSK



Almond Milk
Sparkle
N17



PRINTED VARIED STRIPE CREW NECK SPIRIT JERSEY®

STYLE NO. **J0470VSGD**

DETAILS Trademarked garment. 100% heavyweight cotton with panel printing, garment dyed, drop shoulder, center front and back yoke detail with curved hem.

FIT Oversized Color shown: CHALK

*Unavailable in: Black, Deep Indigo, Midnight, and Natural Dyes

ARTWORK: J0470SMS478 – Back 6009-3M (T1-1/C)

HOODED POCKET SPIRIT JERSEY®
W/WHITE CORD

STYLE NO. J0262GD

DETAILS 100% heavyweight cotton, garment dyed, drop shoulder, center front and back yoke detail. Garment has hood, kangaroo pocket, curved ribbed banded hem and white laces.

FIT Oversized

Color shown: DEEP INDIGO

LACE UP SPIRIT JERSEY®
W/ WHITE CORD

STYLE NO. J0204GD

DETAILS Trademarked garment. 100% heavyweight cotton, garment dyed, drop shoulder, center front and back yoke detail. lace up center front with curved hem and white laces.

FIT Oversized

Color shown: PRIMROSE



BLACK	001
MAROON	608
GARNET	628
RED 14	611
CLEMENTINE	826
NAT RED	8NA
GOLDEN ROD	712
NAT YELLOW	7NA
TANNIN	243
NAT GREEN	3NA
KELLY GREEN	351
HUNTER GREEN	918
STORM GRAY	032
ICE BLUE	470
NAT BLUE	4NA
SEA SPRAY	475
ROYAL BLUE	438
MOONLIGHT	958
MIDNIGHT	416
DEEP INDIGO	414
COLLEGE PURPLE	512
NAT VIOLET	5NA
PRIMROSE	661
SUNSET CORAL	840
PINK SORBET	689
SOFT PEARL	692
CHALK	271
WHITE	100

BLACK	001
MAROON	608
GARNET	628
RED 14	611
CLEMENTINE	826
NAT RED	8NA
GOLDEN ROD	712
NAT YELLOW	7NA
TANNIN	243
NAT GREEN	3NA
KELLY GREEN	351
HUNTER GREEN	918
STORM GRAY	032
ICE BLUE	470
NAT BLUE	4NA
SEA SPRAY	475
ROYAL BLUE	438
MOONLIGHT	958
MIDNIGHT	416
DEEP INDIGO	414
COLLEGE PURPLE	512
NAT VIOLET	5NA
PRIMROSE	661
SUNSET CORAL	840
PINK SORBET	689
SOFT PEARL	692
CHALK	271
WHITE	100

A.
Color shown: ROYAL BLUE



**AVAILABLE IN
ALL COLORS**

Color shown: CHALK

NEW

B.



GOOD SPIRIT CREW

STYLE NO. **J0235GD**

DETAILS 100% heavyweight cotton, garment dyed, long sleeve crew neck with straight hem.

FIT Relaxed

ARTWORK: A. J0235SMS646 – Front 27680-24F (T1-1/C), Back 8311-4XS (T1-3/C),
 B. J0235SMS651 – Front 28038-24F (T1-2/C)

**AVAILABLE IN
ALL COLORS**

Color shown: TANNIN





Color shown: SEA SPRAY

SPORTY MESH SPIRIT JERSEY®

STYLE NO. **J0472GD**

DETAILS Trademarked garment. 100% heavyweight cotton, garment dyed, long sleeve top with drop shoulder and contrast 97% cotton / 3% elastane mesh panel on shoulders.

FIT Oversized

ARTWORK: J0472SMS591 – Back 6240-3M (T1-1/C)

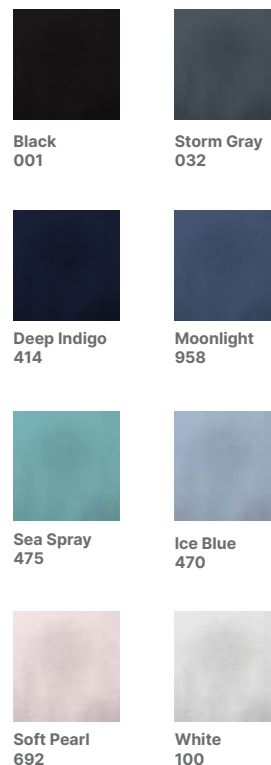
BLACK	001
MAROON	608
GARNET	628
RED 14	611
CLEMENTINE	826
NAT RED	8NA
GOLDEN ROD	712
NAT YELLOW	7NA
TANNIN	243
NAT GREEN	3NA
KELLY GREEN	351
HUNTER GREEN	918
STORM GRAY	032
ICE BLUE	470
NAT BLUE	4NA
SEA SPRAY	475
ROYAL BLUE	438
MOONLIGHT	958
MIDNIGHT	416
DEEP INDIGO	414
COLLEGE PURPLE	512
NAT VIOLET	5NA
PRIMROSE	661
SUNSET CORAL	840
PINK SORBET	689
SOFT PEARL	692
CHALK	271
WHITE	100



46 T-SHIRTS



Color shown: ICE BLUE



MEN'S SHORT SLEEVE TEE

STYLE NO. **J5200PD**

DETAILS Men's classic fit short sleeve 100% soft combed cotton, piece dyed with garment wash tee with 1×1 rib collar.

FIT Classic

ARTWORK: "Coronado": J5200SMS589 – Front 28095-24F (T1-2/C), "Catalina": J5200SMS590 – Front 28096-24F (T1-1/C), "Montana": J5200SMS623 – Back 8320-4S (T1-2/C)

NEW

WOMEN'S SHORT SLEEVE TEE

STYLE NO. **J5201PD**

DETAILS Women's classic fit short sleeve 100% soft combed cotton, piece dyed with garment wash tee with 1×1 rib collar.

FIT Classic



White
100



Soft Pearl
692



Chalk
271



Ice Blue
470



Black
001



Moonlight
958



Primrose
661

ARTWORK: J5201SMS629 – Front 27613-24F (T1-3/C)

Color shown: ICE BLUE

WOMEN'S SPARKLE SHORT SLEEVE TEE

STYLE NO. **J5201SK**

DETAILS Women's classic fit short sleeve 100% soft combed cotton with all over glitter print tee with 1×1 rib collar.

FIT Classic



Black Sparkle
BKS



Midnight
Sparkle
N18

Color shown: MIDNIGHT SPARKLE

NEW



Color shown on: MOONLIGHT

BLACK	001
MAROON	608
GARNET	628
RED 14	611
CLEMENTINE	826
NAT RED	8NA
GOLDEN ROD	712
NAT YELLOW	7NA
TANNIN	243
NAT GREEN	3NA
KELLY GREEN	351
HUNTER GREEN	918
STORM GRAY	032
ICE BLUE	470
NAT BLUE	4NA
SEA SPRAY	475
ROYAL BLUE	438
MOONLIGHT	958
MIDNIGHT	416
DEEP INDIGO	414
COLLEGE PURPLE	512
NAT VIOLET	5NA
PRIMROSE	661
SUNSET CORAL	840
PINK SORBET	689
SOFT PEARL	692
CHALK	271
WHITE	100

Color shown: HUNTER GREEN



50 SHORTS



Color shown: CHALK



AVAILABLE IN
ALL COLORS

Color shown: NAT BLUE

FLEECE WOMEN'S SHORTS

STYLE NO. **F2253GD**

DETAILS 87% cotton / 13% polyester, garment dye, fleece short with pockets. elastic at waistband. 2" inseam.

FIT Classic

*Unavailable in Natural Dyes.

CLASSIC WOMEN'S SHORTS

STYLE NO. **J0535GD**

DETAILS 100% heavyweight cotton, garment dyed, drawstring short with pockets, white cord (only).

FIT Classic

ARTWORK: "Vacation": F2253SMS593 – Front 28110-24F (T1-1/C),
"Palm Tree": BJ256SMS481 – Front 22046-23F (T1-1/C)

Color shown: ICE BLUE



52 FLEECE



Color shown: TANNIN

BANDED FLEECE SPIRIT JERSEY®

STYLE NO. **F2267GD**

DETAILS Trademarked garment. 87% cotton / 13% polyester, garment dye, drop shoulder, center front and back yoke detail with banded waist.

FIT Oversized

*Unavailable in Natural Dyes

ARTWORK: Back 9005-9M (T1-2/C)

BLACK	001
MAROON	608
GARNET	628
RED 14	611
CLEMENTINE	826
GOLDEN ROD	712
TANNIN	243
KELLY GREEN	351
HUNTER GREEN	918
STORM GRAY	032
ICE BLUE	470
SEA SPRAY	475
ROYAL BLUE	438
MOONLIGHT	958
MIDNIGHT	416
DEEP INDIGO	414
COLLEGE PURPLE	512
PRIMROSE	661
SUNSET CORAL	840
PINK SORBET	689
SOFT PEARL	692
CHALK	271
WHITE	100

BLACK	001
MAROON	608
GARNET	628
RED 14	611
CLEMENTINE	826
GOLDEN ROD	712
TANNIN	243
KELLY GREEN	351
HUNTER GREEN	918
STORM GRAY	032
ICE BLUE	470
SEA SPRAY	475
ROYAL BLUE	438
MOONLIGHT	958
MIDNIGHT	416
DEEP INDIGO	414
COLLEGE PURPLE	512
PRIMROSE	661
SUNSET CORAL	840
PINK SORBET	689
SOFT PEARL	692
CHALK	271
WHITE	100



Color shown: HUNTER GREEN



Color shown: ROYAL BLUE



Color shown: CHALK

FLEECE COZY PLACKET

STYLE NO. **F2258GD**

DETAILS Trademarked garment. 87% cotton / 13% polyester, garment dye, drop shoulder, center front and back yoke with curved hem and snap placket.

FIT Oversized

*Unavailable in Natural Dyes.

ARTWORK: F2258SMS490 – Back 5546-3M (T1-3/C)

FLEECE CROPPED SLOUCHY TOP

STYLE NO. **F2152GD**

DETAILS 87% cotton / 13% polyester, garment dye, long sleeve, boxy crew neck fleece with drop shoulders.

FIT Relaxed

*Unavailable in Natural Dyes.

FLEECE ZIP-UP SPIRIT JERSEY® HOODIE

STYLE NO. **F2556GD**

DETAILS Trademarked garment. 87% cotton / 13% polyester, garment dye, full zip, hooded, drop shoulder with white drawstrings. center front and back yoke detail, kangaroo pocket and banded waist.

FIT Oversized

*Unavailable in Natural Dyes.

FLEECE SWEATPANTS

STYLE NO. **F2576GD**

DETAILS 87% cotton / 13% polyester, garment dye, fleece sweatpants with pockets. elastic at waistband and cuffs.

FIT Oversized

*Unavailable in Natural Dyes.

Color shown: STORM GRAY





BLACK	001
MAROON	608
GARNET	628
RED 14	611
CLEMENTINE	826
GOLDEN ROD	712
TANNIN	243
KELLY GREEN	351
HUNTER GREEN	918
STORM GRAY	032
ICE BLUE	470
SEA SPRAY	475
ROYAL BLUE	438
MOONLIGHT	958
MIDNIGHT	416
DEEP INDIGO	414
COLLEGE PURPLE	512
PRIMROSE	661
SUNSET CORAL	840
PINK SORBET	689
SOFT PEARL	692
CHALK	271
WHITE	100



58 CUDDLE



Color shown: MOONLIGHT



Color shown: MOONLIGHT

CUDDLE SPIRIT JERSEY® W/ FLEECE YOKE

STYLE NO. **S2270PD**

DETAILS Trademarked garment. Drop shoulder 80% cotton / 20% poly fleece yoke and faux 100% poly sherpa body w/ curved hem.

FIT Oversized

ARTWORK: "Scenic Route": S2270SMS608 – Back 8211-4M (T1-2/C), "Adventure": S2009SMS609- 27452-24F (T1-1/C)

CUDDLE SHERPA BLANKET

STYLE NO. **S2009PD**

DETAILS Faux poly 100% sherpa with 80% cotton / 20% poly fleece corner for decoration.

SIZE Dimension: 60" x 52" (one size)

*1 screen max



Ivory
149

NEW



Moonlight
958



HOLIDAY PLAID CUDDLE SPIRIT JERSEY®

STYLE NO. **S2270PX**

DETAILS Trademarked garment. Drop shoulder 80% cotton, 20% poly fleece yoke and 100% poly faux sherpa body w/ curved hem.

FIT Oversized



HOLIDAY PLAID CUDDLE BLANKET

STYLE NO. **S2009PX**

DETAILS Faux poly 100% sherpa with 80% cotton / 20% poly fleece corner for decoration.

SIZE Dimension: 60" x 52" (one size)

*1 screen max

ARTWORK: "Holly Branch": S2009SMS614 - 27363-24F (T3-2/C)



Color shown: VANILLA BEAN



62 LOUNGE

NEW



Color shown: VANILLA BEAN

LUXE BRUSHED SWING V-NECK TOP

STYLE NO. **BJ039PD**

DETAILS Luxe brushed long sleeve v-neck with straight hem. Cloud grey: 57% polyester / 39% viscose / 4% spandex, Vanilla bean: 49% viscose / 48% polyester / 3% spandex

FIT Relaxed



Cloud Grey
033



Vanilla Bean
273

ARTWORK: BJ039SMS600 - 27763-24F (T1-4/C)

LUXE BRUSHED SHORTS

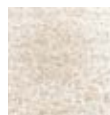
STYLE NO. **BJ256PD**

DETAILS Luxe brushed dolphin style short with side pockets and drawstring waistband. Cloud grey: 57% polyester / 39% viscose / 4% spandex, Vanilla bean: 49% viscose / 48% polyester / 3% spandex

FIT Relaxed



Cloud Grey
033



Vanilla Bean
273



Color shown: VANILLA BEAN



ARTWORK: BJ036SMS625 - 27616-24F (T1-3/C)

Color shown: MOONLIGHT

LUXE BRUSHED GIRLIE BANDED CREW

STYLE NO. **BJ036PD**

DETAILS Luxe brushed long sleeve with straight hem. Cloud grey: 57% polyester / 39% viscose / 4% spandex, Vanilla bean: 49% viscose / 48% polyester / 3% spandex, Moonlight: 75% rayon / 22% polyester / 3% spandex, Primrose: 75% rayon / 22% polyester / 3% spandex

FIT Relaxed



Cloud Grey
033



Vanilla
Bean
273



Moonlight
958



Primrose
661

LUXE BRUSHED JOGGERS

STYLE NO. **BJ049PD**

DETAILS Luxe brushed ankle length with side pockets and drawstring waistband. Cloud grey: 57% polyester / 39% viscose / 4% spandex, Vanilla bean: 49% viscose / 48% polyester / 3% spandex, Moonlight: 75% rayon / 22% polyester / 3% spandex

FIT Slim Tapered



Cloud Grey
033



Vanilla
Bean
273



Moonlight
958



LUXE BRUSHED TRAVEL BLANKET W/ BAG

STYLE NO. **BJ017PD**

DETAILS Luxe brushed travel multi-purpose wrap. Cloud grey: 57% polyester / 39% viscose / 4% spandex

SIZE Dimension: 36" x 84"



Cloud Grey
033

* Print dimension:
7" w x 3" h, 6 colors max





Color shown: HEATHER GREY



Midnight
416



Heather Grey
060

PRINTABLE SPIRIT JERSEY® SWEATER

STYLE NO. **KF470YD**

DETAILS Trademark garment. 100% cotton yard dye drop shoulder sweater knit yoke body with curved hem.

FIT Oversized

*Waterbase ink only

ARTWORK: KF470SMS513 – Back 139 (T1-1/C)



ARTWORK: KF470SMS512 - Back 6116-3M (T2-2/C)

Color shown: MIDNIGHT



NEW



BULL DENIM SHOPPER TOTE

STYLE NO. **TD016PD**

DETAILS 100% cotton bull denim shopper tote.

SIZE Dimension: 23.3" x 15.5" x 10"

* Print dimension: 17" x 10", 7 colors max



Black
001



70 AQUA

ARTWORK: NS047SMS607 – Back 8295-4M (T2-2/C)

AQUA CREW NECK SPIRIT JERSEY®

STYLE NO. NS047PD

DETAILS Trademarked garment. 87% nylon / 13% spandex, drop shoulder, center front and back yoke detail w/ curved hem, UPF 50 (will come with tear away label)

FIT Relaxed

*Silicone ink (2 screens max)

White
100

Sweet
Coral
665

NEW

Sea Spray
475

Tidepool
Turquoise
498

Midnight
416



Color shown: MIDNIGHT



Color shown: TIDEPOOL TURQUOISE

AQUA QUARTER ZIP SPIRIT JERSEY®

STYLE NO. NS048PD

DETAILS Trademarked garment. 87% nylon / 13% spandex, drop shoulder, center front and back yoke detail w/ curved hem, UPF 50 (will come with tear away label)

FIT Relaxed

*Silicone ink (2 screens max)

White
100

Midnight
416



72 YOUTH



Color shown: PINK SORBET

YOUTH CREW NECK SPIRIT JERSEY®

STYLE NO. J1101GD / J1101GD-U

DETAILS Trademarked garment. 100% heavyweight cotton, garment dyed, drop shoulder, center front and back yoke detail w/ curved hem.
USA made available.

FIT Oversized

ARTWORK: J1101SMS604 – Front 28015-24F (T1-2/C)

BLACK	001
MAROON	608
GARNET	628
RED 14	611
CLEMENTINE	826
NAT RED	8NA
GOLDEN ROD	712
NAT YELLOW	7NA
TANNIN	243
NAT GREEN	3NA
KELLY GREEN	351
HUNTER GREEN	918
STORM GRAY	032
ICE BLUE	470
NAT BLUE	4NA
SEA SPRAY	475
ROYAL BLUE	438
MOONLIGHT	958
MIDNIGHT	416
DEEP INDIGO	414
COLLEGE PURPLE	512
NAT VIOLET	5NA
PRIMROSE	661
SUNSET CORAL	840
PINK SORBET	689
SOFT PEARL	692
CHALK	271
WHITE	100

YOUTH CUDDLE SPIRIT JERSEY® W/ FLEECE YOKE

STYLE NO. **S2903PD**

DETAILS Trademarked garment. Drop shoulder 80% cotton / 20% poly fleece yoke and faux 100% poly sherpa body w/ curved hem.

FIT Oversized



Ivory
149



YOUTH AQUA CREW NECK SPIRIT JERSEY®

STYLE NO. **NS905PD**

DETAILS Trademarked garment. 87% nylon / 13% spandex drop shoulder, center front and back yoke detail w/ curved hem, UPF 50.
(will come with tear away label)

FIT Relaxed

*Silicone ink (2 screens max)

NEW				
				
White 100	Sweet Coral 665	Sea Spray 475	Tidepool Turquoise 498	Midnight 416

ARTWORK: NS905SMS606 – Back 8172-4S (T2-2/C)

NEW



**YOUTH SPARKLE CREW NECK
SPIRIT JERSEY®**

STYLE NO. **J1101SK**

DETAILS Trademarked garment. 100% heavyweight all over sparkle cotton, garment dyed, drop shoulder, center front and back yoke detail w/ curved hem.

FIT Oversized



Black
Sparkle
BKS

NEW



**YOUTH WATER LINE DYE CREW
NECK SPIRIT JERSEY®**

STYLE NO. **J1101WL**

DETAILS Trademarked garment. 100% heavyweight cotton with a novelty wash*, drop shoulder, center front and back yoke detail w/ curved hem.

FIT Oversized



Water Line
TD
TB5

* Each garment is processed by hand. garments may vary in color & shades.



76 ARTWORK



At Spirit Jersey, we are known for bold, eye-catching designs featuring vibrant colors and playful graphics. Spirit Jersey® trademark puff printing techniques allow for crisp, detailed logos and lettering — adding a touch of texture and dimension to mascots, symbols, or text. Our design team will work side-by-side with your brand to make your vision come to life on a Spirit Jersey®!

ARTWORK: "California" HG470SMS632 - Back 8284-4 (T1-6/C), "Yacht Club" J5201SMS586 - Back 8342-4 (T1-2/C), "Laguna Beach" J5201SMS587 - Front 28093-24F (T1-1C), "Vacay Era" J5201SMS629 - Front 27613-24F (T1-3C), "Laguna Laguna" J5201SMS588 - Front 28094-24F (T2-3C), "Charleston" J5201SMS628 - Front 27612-24F (T1-2C)

FONTS



#28783-24F
COPPERPLATE/FONT

T1-1/C



#28789-24F
DIDOT

T2-2/C



#28784-24F
NAUTICA

T1-1/C



#28790-24F
LEMON MILK

T1-1/C



#28785-24F
BEBAS

T2-3/C



#28791-24F
GOBOLD HIGH

T1-1/C



#28786-24F
ELEGANT TYPE WRITER

T1-1/C



#28792-24F
BROMELLO

T3-3/C



#28787-24F
BIG CASLON

T1-1/C



#28793-24F
FRAKTUR EF

T1-1/C



#28788-24F
LICENSE

T1-1/C



28794-24F
PACIFICO

T2-4/C



T2-2/C

#28795-24F
QEILAB



T1-1/C

#28806-24F
TARANIS



T1-1/C

#28796-24F
COLLEGE



T2-3/C

#28805-24F
SELFIE NEUE



T2-2/C

#28797-24F
OSWALD



T1-1/C

#28804-24F
MINION VARIABLE



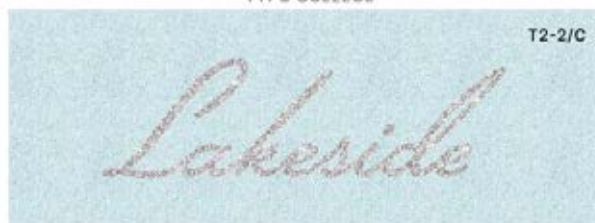
T1-2/C

#28798-24F
TYPO COLLEGE



T1-1/C

#28803-24F
OLD LONDON



T2-2/C

#28799-24F
LAKESIDE



T1-1/C

#28802-24F
NIAGARA



T1-1/C

#28800-24F
LUCYNA SANS



T1-1/C

#28801-24F
BOU COLLEGE



T2-2/C

#28807-24F
BLASE ITC



T1-2/C

#28813-24F
FUTURA



T1-1/C

#28808-24F
DEHORS



T2-2/C

#28814-24F
JIMMY SCRIPT



T1-1/C

#28809-24F
OLD ENGLISH



T1-1/C

#28815-24F
KING LOUNPERA



T2-2/C

#28810-24F
BASKERVILLE



T2-3/C

#28816-24F
MOONLIGHTS



T1-1/C

#28811-24F
LUCYNA



T1-1/C

#28817-24F
ARASTIN



T1-1/C

#28812-24F
WESTWOOD



T3-2/C

#28818-24F
LIBERIARTSY



T2-3/C

#28819-24F
KAOLY



T2-3/C

#28830-24F
SUPER RETRO



T2-1/C

#28820-24F
COPPERPLATE/MERMAID SCALE PREPPY



T2-3/C

#28829-24F
BEAUTIFUL VALENTINE



T1-3/C

#28821-24F
JIMI



T1-1/C

#28828-24F
NEW ATHLETIC M54



T1-3/C

#28822-24F
CUTE FROG



T1-2/C

#28827-24F
BROTHER



T1-2/C

#28823-24F
CHUNQ



T1-2/C

#28826-24F
DINOSAUR CAKE



T2-3/C

#28824-24F
ALAMEDA SCRIPT



T2-2/C

#28825-24F
SUGARPUNCH

FONT COMBINATIONS



#28831-24F
COLLEGE/SELFIE NEUE



#28837-24F
IMPACT/BASKERVILLE



#28832-24F
HELVETICA/NAUTICA



#28838-24F
MYRIAD PRO/MINION VARIABLE



#28833-24F
BOURBIN/RIZADO SCRIPT



#28839-24F
LUCYNA SANS/PACIFICO



#28834-24F
COOPER/BRUSH SCRIPT



#28840-24F
HELVETICA/LIGHT



#28835-24F
PROHIBITION/NIAGARA



#28842-24F
LAKESIDE/DIDOT



#28855-24F
CAMPANA/ALL ROUND GOTHIC DEMI



#28843-24F
BROMELLO/TARANIS



#28844-24F
AIRWAVES/AIRWAVES SCRIPT



#28850-24F
MNION VARIABLE/MYRIAD VARIABLE



#28845-24
FUTURA/GILLY



#28851-24F
BEBAS NEUE/AMELIORA



#28846-24F
CALIFORNIA SIGNATURE/SERIF SCRIPT



#28852-24F
GALILEI SCRIPT/GALILEO



#28847-24F
MALIBU SUNSET/ SCRIPT



#28853-24F
ABEATBYKAY/SANGHARIA



#28848-24F
TYPO GROTESK/BASKERVILLE



#28854-24F
VALLEDOFAS/HELVETICA NEUE



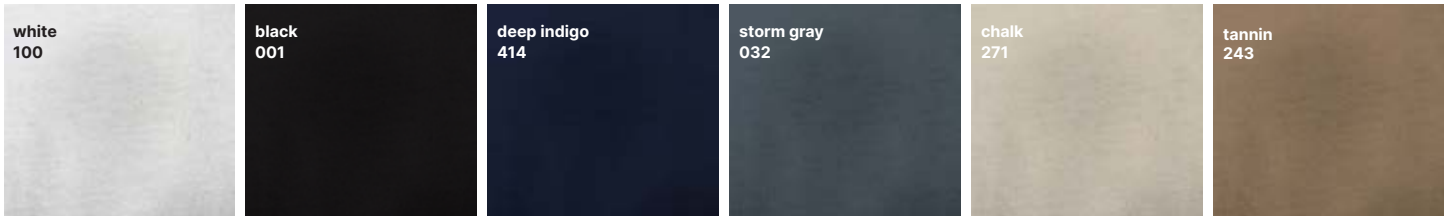
#28849-24F
THE ATHLETICO/THE ATHLETICO SERIF



#28836-24F
TARANIS/TIPO GROTESK

84 COLORS & WASHES

NEUTRAL



CLASSIC



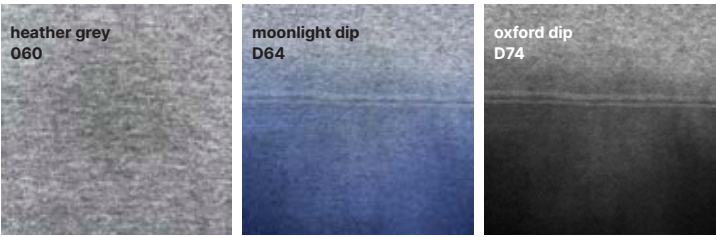
FASHION



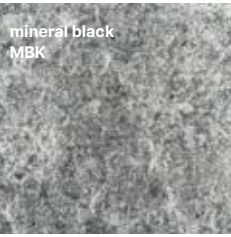
NATURAL DYES



HEATHER GREY



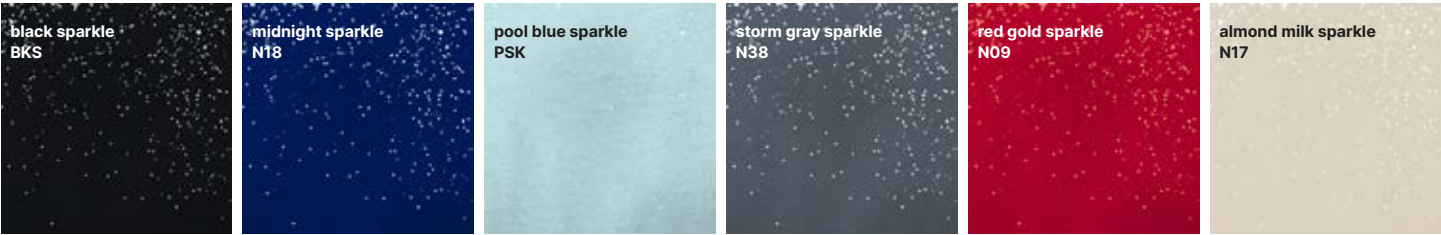
MINERAL WASH



TIE DYE



SPARKLE



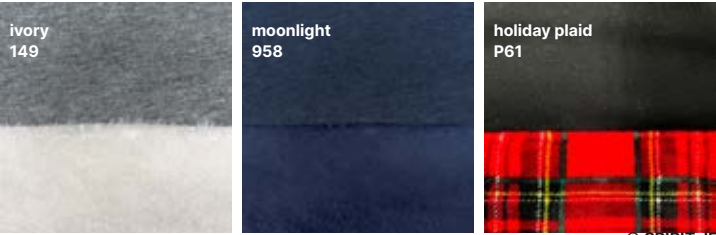
FADE & OMBRE



LUXE BRUSHED



CUDDLE



THE SPIRIT JERSEY®

UNIQUELY RECOGNIZABLE

SPIRIT JERSEY® TRADEMARK

The overall appearance of the Spirit Jersey® including the unique combination of its features, is a trademark of Spirit Clothing Company. The jerseys are sold in connection with the trademark Spirit Jersey® which is also a registered trademark of Spirit Clothing Company.

BREAKDOWN

DROP SHOULDER

Perfect for a lived in casual look.

OVERSIZED GARMENT

BANDED SLEEVES

SPIRIT JERSEY® BLUE FLAG

Each Spirit Jersey® is crafted with quality construction and finished with a branded blue flag.

OVERSIZED ART PLACEMENT

Once you recognize a Spirit Jersey®, you'll spot them everywhere you go. Our oversized art can span from your left to right wrists.



HIGH-DENSITY PUFF

Not just screen printed! Our high-density puff has an incredible texture that stands up over time.

NOTICEABLE SEAMS & STITCHING

Double needle stitching across the yoke makes the Spirit Jersey® silhouette stand out from the crowd.

CURVED HEM

Unisex Top	XS	S	M	L	XL	XXL
US Size - Womens	2-4	6-8	10-12	14-16	18-20	22-24
Chest (Wearer)	35-38	38-41	41-44	44-47	47-50	50-53
Chest	42	45	48	51	54	57
Sleeve Length	29	30	31.25	32.25	33.5	34.5
Length	28	29	30	31	32	33

*MALE MODEL: Wearing size L: Height 6'2", FEMALE MODEL: Wearing size S. Height: 5'8"

PRINT OPTIONS



- 1. LIGHT PUFF
- 2. GOLD FOIL
- 3. DIAMOND ICE
- 4. IRIDESCENT FOIL
- 5. SILVER FOIL
- 6. PUFF



Tel: 213.236.4750/800.247.3878

Wholesale website: nuorder.com/SpiritJersey

E-mail: info@spiritjersey.com

Website: spiritjersey.com

The overall appearance of the Spirit Jersey® is a registered trademark. Spirit Jersey® is a registered trademark of Spirit Clothing Company

The overall appearance of the jersey, including the unique combination of features, is a trademark of Spirit Clothing Company

The jerseys are sold in connection with the trademark Spirit Jersey which is also a registered trademark of Spirit Clothing Company