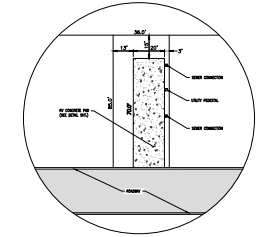


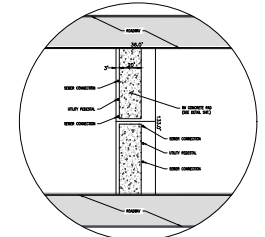
**NOTES:**  
 1. SEE SHEET C2.0 FOR ALL GENERAL NOTES.

**TOTAL SITE DATA:**  
 1. ZONING: PUD  
 2. LOT SIZE: 25,294 AC. (1,101,749 S.F.)  
 3. PERCENTAGE OF OPEN SPACE: 25%  
 4. PROPOSED # OF PARKING SPOTS: 180  
 5. REQUIRED # OF PARKING SPOTS: 126

THE SITE IS LOCATED IN ZONE X PER THE LATEST FRM PUBLISHED BY FEMA.



BACK-IN LOT TYPICAL DETAIL  
 N.E.L.



PULL-THRU LOT TYPICAL DETAIL  
 N.E.L.

ISSUED  
 FOR  
 REVIEW

REVISIONS		
A	ISSUED FOR REVIEW	1/25/21
B	LOT RE-CONFIGURATION	5/13/21



LIEB ENGINEERING COMPANY  
 1290 MAIN STREET, SUITE E  
 DAPHNE, AL 36526  
 PH: (251) 978-9779

NOT VALID WITHOUT THE DATED SIGNATURE AND SEAL OF AN ALABAMA LICENSED ENGINEER.  
 ALABAMA LICENSED ENGINEER: CHRISTOPHER JAY LIEB, P.E. LICENSE NUMBER 31204  
 ALABAMA CERTIFICATE OF AUTHORIZATION NUMBER: 4938

JOB NUMBER: 2019-048  
 DRAWN BY: JLG DATE: 11/9/2020 SCALE: 1"=100'  
 CHECKED BY: CJL APPROVED BY: CJL ENGR: CJL

GRAND RIVIERA  
 OVERALL SITE PLAN  
 FOLEY, AL  
 OWNER: STACEY RYALS

SHEET NUMBER  
 3 OF 12

C3.0 B



5/13/2021