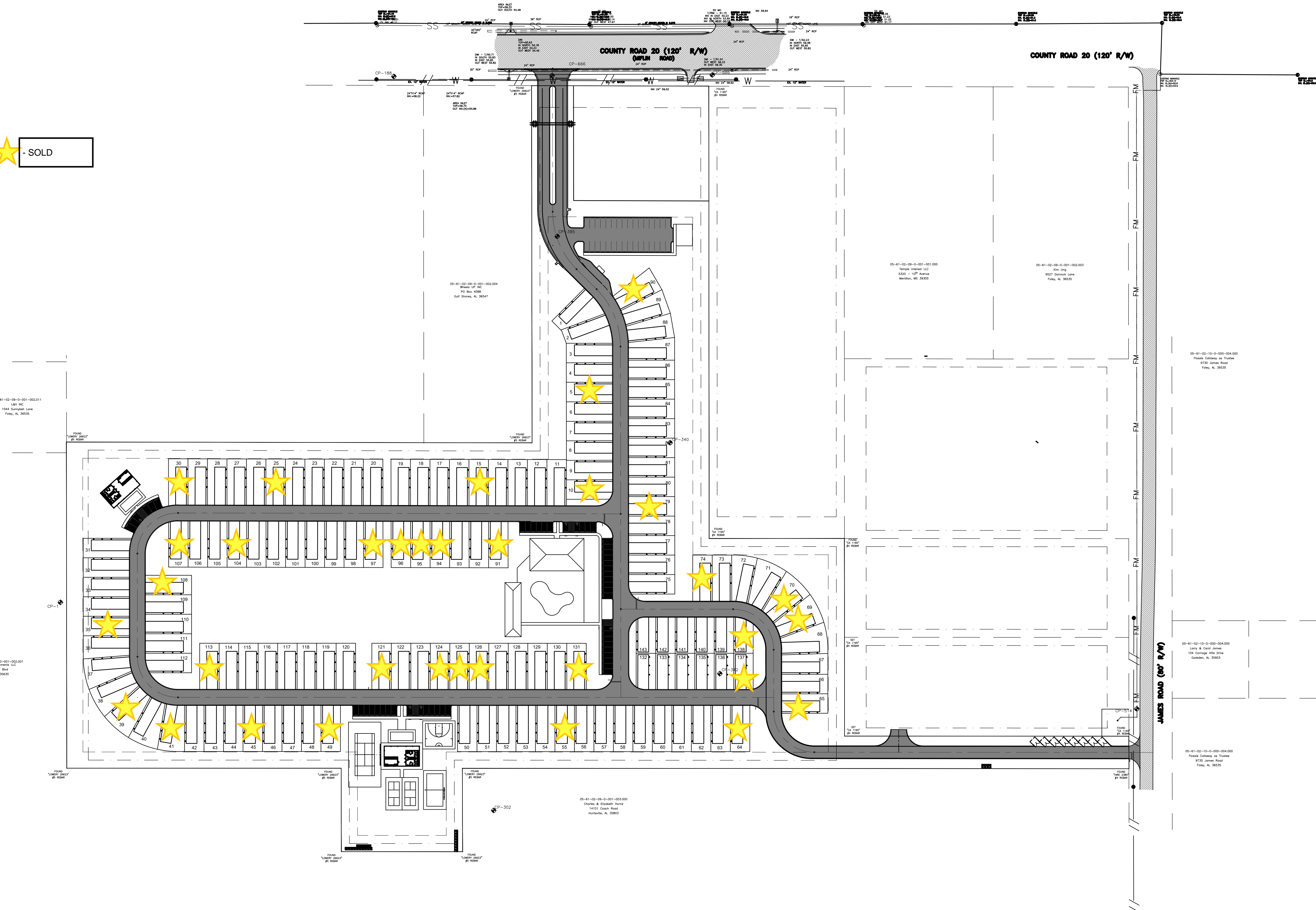


★ - SOLD



NOTES:

1. SEE SHEET C2.0 FOR ALL GENERAL NOTES.

TOTAL SITE DATA:

- | | |
|---------------------------------|-----------------------------|
| 1. ZONING: | PUD |
| 2. LOT SIZE: | 25.29± AC. (1,101,749 S.F.) |
| 3. PERCENTAGE OF OPEN SPACE: | 25% |
| 4. PROPOSED # OF PARKING SPOTS: | 180 |
| 5. REQUIRED # OF PARKING SPOTS: | 126 |

THE SITE IS LOCATED IN ZONE X PER THE LATEST FIRM PUBLISHED BY FEMA.

ISSUED FOR REVIEW

REVISIONS			
A	ISSUED FOR REVIEW	1/25/21	
B	LOT RE-CONFIGURATION	5/13/21	

LIEB ENGINEERING COMPANY

LIEB ENGINEERING COMPANY
1290 MAIN STREET, SUITE E
DAPHNE, AL 36526
PH: (251) 978-9779

NOT VALID WITHOUT THE DATED SIGNATURE AND SEAL OF AN ALABAMA LICENSED ENGINEER.
ALABAMA LICENSED ENGINEER: CHRISTOPHER JAY LIEB, P.E. LICENSE NUMBER 31204
ALABAMA CERTIFICATE OF AUTHORIZATION NUMBER: 4938

JOB NUMBER	DRAWN BY:	DATE:	SCALE:
2019-048	JLG	11/9/2020	1"=100'
	CHECKED BY:	APPROVED BY:	ENGR:
	CJL	CJL	CJL

GRAND RIVIERA	
OVERALL SITE PLAN	
FOLEY, AL	
OWNER: STACEY RYALS	
SHEET NUMBER	
3 OF 12	

C3.0

B

5/13/2021