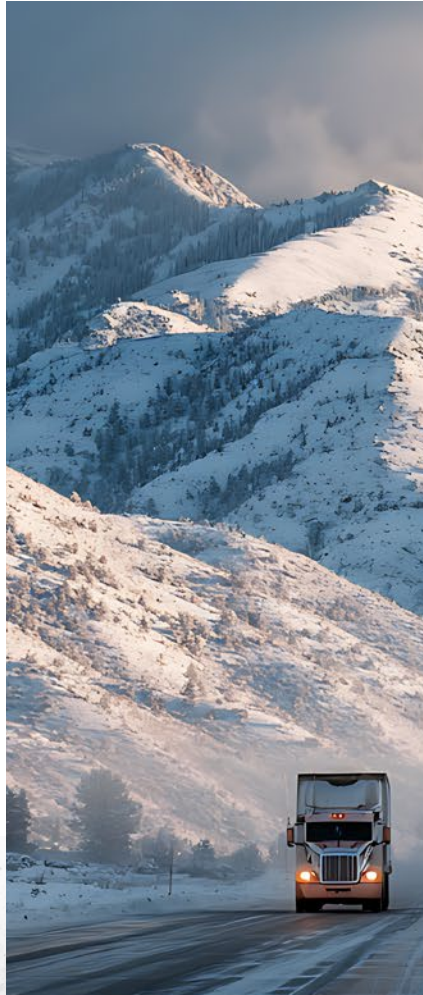


TRACTION

WINTER

EVENT



From January 1 to February 28, 2026

**NEW AT
TRACTION**

Engine Oil Filter,
Lo: 11-39/64",
Thread: M95X2.5-7H,
O.D.: 4-11/16"
FLGLF14000NN



79⁹⁹

**SPECIAL
OFFER**

Brake Shoes Kits

4707M23STD / TRB046M23STD-6R
4515M23STD / TRB051M23STD-6R
4709M23STD / TRB077M23STD-6R



52⁴⁹
ea.

SLACK ADJUSTERS

89⁹⁹
ea.



Automatic Slack Adjusters

Spline: 1-1/2" - 10, L: 5-1/2" / MSAHS1132
 Spline: 1-1/2" - 28, L: 6" / MSAHS1141
 Spline: 1-1/2" - 28, L: 5 1/2" / MSAH801073N
 Spline: 1-1/2" - 28, L: 6" / MSAH801074N
 Spline: 1-1/2" - 10, L: 6" / MSAH801042N
 Spline: 1-1/2" - 28, L: 5 1/2" / MSAD0010211
 Spline: 1-1/2" - 28, L: 6" / MSAD0010212
 Spline: 1-1/2" - 28, L: 6" / MSAD0010305
 Spline: 1-1/2" - 10, L: 5 1/2" / MSAD0010143

STARTING AT
15⁹⁹



Yoke Kit for Automatic Slack Adjuster, Includes Clevis, Pins And Clips

For Gunitite / HDAHAS3000 / **15.99**
 For Meritor / HDAH810019 / **19.99**

93⁹⁹

Optimized Automatic Slack Adjuster,

Spline: 1-1/2" - 28,
 L: 5-1/2"
 TSE07135S0



BRAKES

52⁴⁹
ea.



+ Hardware Included

Brake Shoes Kits

4707M23STD / TRB046M23STD-6R
 4515M23STD / TRB051M23STD-6R
 4709M23STD / TRB077M23STD-6R

STARTING AT
99⁹⁹



Brake Chambers

Stroke: 2-1/2", Push Rod: 12" / TSEHD12581C / **99.99**
 T30/30, Stroke: 2-1/2", Push Rod: 7-7/8" / TSEHD3030C / **109.99**



Brake components built to perform

- > Precision Machining, Superior Performance
- > Tested in the Lab
- > Proven on the Road

Brake Drums

16-1/2" x 5", 10 Holes, (94.65 lbs) / CON10014756 / **189.99**
 16-1/2" x 6", 10 Holes, (109 lbs) / CON10033071 / **199.99**
 16-1/2" x 8-5/8", 10 Holes, (120 lbs) / CON10012097 / **199.99**

STARTING AT
189⁹⁹



BRAKE ROTORS



STARTING AT
199⁹⁹



Flat-Spline Shaped

Flat Shaped

U-Shaped

Brake Rotors

Dia: 12-51/64", Thick: 1-11/32", U-Shaped / ADBHR5180 / **199.99**
 Dia: 16-15/16", Thick: 1-49/64", Flat-Spline Shaped / ADBHR6694 / **199.99**
 Dia: 16-15/16", Thick: 1-49/64", Flat-Spline Shaped / ADBHR6801 / **299.99**
 Dia: 16-15/16", Thick: 1-49/64", U-Shaped / ADBHR6613 / **299.99**
 Dia: 16-15/16", Thick: 1-49/64", U-Shaped / ADBHR6617 / **299.99**
 Dia: 16-15/16", Thick: 1-49/64", U-Shaped / ADBHR6618 / **299.99**
 Dia: 16-15/16", Thick: 1-49/64", U-Shaped / ADBHR6619 / **299.99**
 Dia: 16-15/16", Thick: 1-49/64", U-Shaped / ADBHR6620 / **299.99**

OEM QUALITY WITHOUT COMPROMISE

AIR DRYERS

STARTING AT
78⁹⁹

Purge Valve Assemblies for Air Dryers

AD-9, New / BEN5004341X / **78.99**
 AD-IP / BENK022105 / **128.99**



STARTING AT
35⁹⁹

Desiccant Cartridges

AD-9, Remanufactured / BEN107794X / **35.99**
 AD-9, Remanufactured / BEN107794PGX / **65.99**
 AD-IS and AD-SP, New / BEN5008414 / **72.99**
 AD-IP, Remanufactured / BEN109493X / **98.99**
 AD-IS, New / BEN5008414PG / **128.99**
 AD-IP, Kit / BEN109493PGX / **137.99**
 AD-HF, Kit / BEN5009041PG / **139.99**
 AD-IS, Remanufactured / BEN5004050X / **394.99**



STARTING AT
209⁹⁹

Air Dryers

AD-9, Remanufactured / BEN109685X / **209.99**
 AD-9, Puraguard / BEN109685PGX / **219.99**
 AD-IP, Remanufactured / BEN109477X / **339.99**
 AD-IP, Remanufactured / BEN109477PGX / **369.99**
 AD-IS, New / BEN5010696X / **407.99**
 AD-IS, Remanufactured / BEN801266 / **619.99**



AIR CONTROL VALVES

64⁹⁹

**Multi-function
Pilot Valve, 3 Ports**
AIRAC005



65⁹⁹

**3-Way Miniature Ball
Valve with 3 Ports**
AIRAC056



27⁹⁹

**One-way check
Valve with Filter
and 2 PT Ports**
AIRAC008



**279⁹⁹
ea.**

Air Control Valves

Norgren K910019, 5 PT Ports / AIRACW4944
Manac SP-4901, 3 PT Ports / AIRACW4946
5 PT Ports / AIRAC014R
Norgren K910019, 5 PT Ports / AIRAC045R



**STARTING AT
79⁹⁹**

Height Control Valves

4 Ports / AIRHD52321-Q195 / **79.99**
5 Ports / AIRHD52341-Q2205 / **129.99**



21⁹⁹

**Universal Trailer
Linkage Kit for Air
Control Valve**
AIRAC103



55⁹⁹

**Miniature Pressure
Regulator Valve, 2 Ports**
AIRAC047R



**STARTING AT
12⁹⁹**

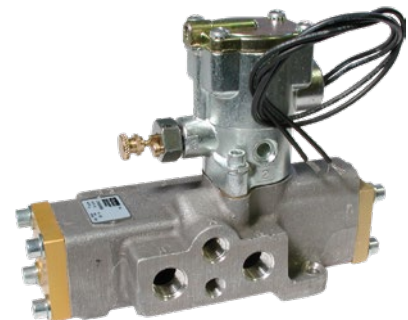
Drain Valves

62" Crimp / HDPH401047 / **12.99**
60" Crimp / HDPH401046 / **13.99**



684⁹⁹

**3-Way Electrical Solenoid
Valve, 4 PT Ports**
AIRAC015



199⁹⁹

FF2 Relay Valve, New
HDPHKN28600



85⁹⁹

Auto-Reset Control Valve,
Metal construction, 3 PT Ports
AIRAC087



82⁹⁹

Relay Valve, New
HDPHKN28510



AIR TANKS



FEATURES

- Manufactured under the ISO9001, TS16949, ISO14001 quality system
- SAE J10, EN286-2 and CE approved
- Electrostatic powder coating for long lasting corrosion protection
- Automated robotic welding process

STARTING AT
139⁹⁹

9.5", 4 Ports / AIRHD9508 / **139.99**
 9.5", 3 Ports / AIRHD9500 / **144.99**
 9.5", Inverted Bracket / AIRHD9501 / **149.99**
 8", 3 Ports / AIRHD8001 / **189.99**
 9.5", 4 Ports / AIRHD1229 / **219.99**
 12", 4 Ports / AIRHD1205 / **229.99**
 12", 3 Ports / AIRHD1200 / **229.99**

ABS

20⁹⁹

ABS Extension Cable, Right Angle
HDPS30300



STARTING AT
45⁹⁹

Right Angle ABS Sensors

0.3 M / HDPS28080 / **45.99**
 2 M / HDPS28140 / **53.99**
 1.8 M / HDPS29190 / **58.99**
 0.3 M / HDPS28090 / **60.99**
 1.8 M / HDPS28130 / **64.99**
 1.8 M / HDPS29000 / **65.99**



BATH OIL SEALS

STARTING AT
25⁹⁹



Trailer / HDSHD802 / **25.99**
 Steering / HDSHD804 / **26.99**
 Trailer / HDSHD808 / **26.99**
 Trailer / HDSHD801 / **26.99**
 Steering / HDSHD805 / **28.99**
 Drive / HDSHD809 / **28.99**
 Drive / HDSHD803 / **29.99**



WHEEL BEARING SETS

STARTING AT
28⁹⁹



HM212049, HM212011 / HDBHDSET413 / **28.99**
 580/572 / HDBHDSET401 / **36.99**
 592A/594A / HDBHDSET403 / **37.99**
 HM218210, HM218248 / HDBHDSET414 / **43.99**
 HM518445, HM518410 / HDBHDSET415 / **51.99**
 6461A/6420 / HDBHDSET423 / **104.99**



Fleetguard®

STARTING AT
33⁹⁹

Fuel/Water Separators

O.D.: 3-13/16" / FLGFS19624 / **33.99**
 O.D.: 3-45/64" / **FLGFF2200** / **42.99**
 O.D.: 3-23/32" / FLGFS1003 / **63.99**
 O.D.: 4-1/4" / FLGFS20007 / **69.99**
 O.D.: 4-23/32" / FLGFF5776 / **99.99**



STARTING AT
22⁹⁹

Engine Oil Filters

O.D.: 3-11/1" / FLGLF3970 / **22.99**
 O.D.: 4-11/16" / AFLGLF14000NN / **79.99**



Why Fleetguard?

Ask About Our Advantages To Your Fleet

1.

Product Coverage

Over 8,000 filtration solutions available to satisfy most applications.

2.

Preferred Solution for Major OEMs

All Fleetguard products meet or exceed OEM quality and performance to maintain healthier engines.

3.

Quality

Testing to industry standards and beyond to ensure you run cleaner, longer.

4.

Warranty

Unmatched in the industry — no prorating, does not void OEM warranty.

5.

Dependability

Superior products and real-world testing help ensure your engine runs cleaner, longer.

6.

Endurance

Realize longer, better performance by guarding your engine's health with Fleetguard solutions.

Firestone

AIRIDE



Comprehensive truck, trailer, bus and rail expertise



State-of-the-art technology and simulation software



First in industry to engineer polymer pistons



Global OE partnership with local engineering, customer support, sales support, production and R & D



ISO 9001, TS-16949 and ISO 14001 certified

STARTING AT
199⁹⁹

5 YEAR
WARRANTY

Air Springs

1T17CA-5 / FIRW01-358-8709 / **199.99**
1T15 SÉRIE X / FIRW01-358-9780 / **199.99**
1T15MM-9 / FIRW01-358-9265 / **209.99**
1T19LC-6 / FIRW01-358-8091 / **219.99**
1T19LF-7 / FIRW01-358-8774 / **239.99**
1T19L-11 / FIRW01-358-9122 / **254.99**
Ride-Rite / FIRW21-760-6781 / **379.99**



999⁹⁹

Ride-Rite Air Spring Kit, Rear
FIRW21-760-2613

469⁹⁹

Heavy Duty Air Compressor for
Ride-Rite
FIRWR1-760-9335



199⁹⁹

Air Tank, 2 Ports
FIRWR1-760-9244





COMMERCIAL VEHICLE

WE GOT YOU

THE RIGHT MAGNUM® FOR YOUR FLEET

COVERAGE FOR THE WIDEST RANGE OF
HEAVY-DUTY VEHICLES



All designs are application-specific and engineered to each commercial/heavy-duty vehicle's drivability and performance profile.



Ready to roll, right out of the box, for fast, easy installation.



LONG HAUL

TRUCK CAB

OFF-HIGHWAY

RECREATIONAL
VEHICLES

TRANSIT &
SCHOOL BUSES

SHOCK ABSORBERS

As one of the world's premier brands of original equipment and replacement shock absorbers, Monroe is synonymous with quality, durability and performance. Each Monroe Magnum axle shock begins with premium materials proven to offer long life in the most demanding operating conditions.

STARTING AT
49⁹⁹

60 Series Shock Absorbers

Stroke: 5-9/64" / MON66608 / **49.99**
Stroke: 5-33/64" / MON66893 / **49.99**
Stroke: 3-1/8" / MON66607 / **54.99**
Stroke: 6-5/8" / MON66636 / **55.99**
Stroke: 8-5/8" / MON66502 / **116.99**

65 Series Shock Absorbers

Stroke: 5-1/8" / MON65416 / **64.99**
Stroke: 5-3/8" / MON65419 / **78.99**
Stroke: 7-3/8" / MON65490 / **81.99**
Stroke: 5-3/32" / MON65493 / **89.99**
Stroke: 4-55/64" / MON65512 / **92.99**
Stroke: 8-7/8" / MON65412 / **95.99**

MAGNUM® SHOCKS

Large bore shock absorbers built for durability, stability and comfort to handle high mileage and severe use, delivering reduced cost per mile.



PTFE-COATED BEARING

Reduces friction between the rod and rod guide for improved durability.

ROBUST HYDRAULIC LOCK-OUT

Hydraulic lock-out design prevents overextension of the suspension, top-out of the piston and averts damage to the seal assembly while maintaining full rod strength.

PROPRIETARY SHOULDERED BUSHING

Shouldered bushing and bonded bushing with sleeve designs prevent bushing walkout for improved quality and durability.

MAGNUM® CAB SHOCKS

Engineering to improve comfort and prevent damage to the cab by isolating the cab from high-frequency vibrations.*



PTFE-COATED BEARING

Reduces friction between the rod and rod guide for improved durability.

NITROGEN GAS CHARGED

Reduces aeration and shock fade to improve motion control during demanding driving conditions.

PROPRIETARY SHOULDERED BUSHING

Shouldered bushing and bonded bushing with sleeve designs prevent bushing walkout for improved quality and durability.

*Where applicable

REAR LIGHTS

STARTING AT
16⁹⁹



LED Lights

4" Stop/Tail/Turn, Red, Round / TRLHB9016R / **16.99**
 6" Stop/Tail/Turn Light, Red, Oval / TRLHB9019R / **23.99**
 Front/Park/Turn, Amber & Yellow, Oval / TRLHB9019A / **24.99**
 4" Back-Up Light, Clear, Round / TRLHB9016C / **59.99**
 6" Back-Up Light, Clear, Oval / TRLHB9019C / **66.99**
 Pedestal Light, Red & Amber, Round / TRLHB9009 / **67.99**

STARTING AT
17⁹⁹



SuperNova® LED Stop Tail Turn Light

Round, Grommet Mount, Male Pin, Red / GR053252 / **17.99**
 Oval, Grommet Mount / GR053962 / **29.99**

FRONT LIGHTS

STARTING AT
199⁹⁹



37 Series LED Headlights

4" x 6", Rectangular, Clear, Low Beam / TRL37640C / **199.99**
 4" x 6", Rectangular, Clear, High Beam / TRL37645C / **199.99**
 7", Round, Clear, High Beam and Low Beam / TRL37270C / **229.99**
 5" x 7", Rectangular, Clear, High Beam and Low Beam / TRL37450C / **239.99**

STARTING AT
152⁹⁹



Heated LED Sealed Beam Headlights

4" x 6" High Beam / GR064J71-5 / **152.99**
 4" x 6" Low Beam / GR064J61-5 / **159.99**
 5" x 7" / GR064H81-5 / **226.99**
 5" x 7", 9-32VV / GR090951-5 / **247.99**

WARNING LIGHTS

STARTING AT
279⁹⁹

Grote



LED Light Bars

Class I Compact, Amber / GR077223 / **279.99**
Mini, Classe I, Amber, 12V/24V / GR078023 / **289.99**
Class I Compact, Clear / GR079220 / **324.99**
Mini, 17" Low-Profil, Amber / GR076983 / **349.99**

STARTING AT
49⁹⁹

Grote



LED Strobe Lights

Round, Amber / GR077353 / **49.99**
Ovale Amber / GR077363 / **52.99**
Compact, Amber / GR079243 / **94.99**

FEDERAL SIGNAL



94⁹⁹

Spire® 100 Strobe Light, Amber
TAR100TP-A

Grote



79⁹⁹

LED Directional Warning Light, Surface Mount,
6-Diode, Class I, Amber
GR078143

Grote



44⁹⁹

LED Warning Light, Battery-Operated,
Amber, 360° LED Beacon
GR077913

Grote



99⁹⁹

LED Beacon, Permanent Mount,
Class II, Amber
GR078853

WORK LIGHTS

STARTING AT
34⁹⁹



BriteZone®

1400 Raw Lumens, Slim / GROBZ301-5 / **34.99**
1240 Raw Lumens, Small Round / GROBZ111-5 / **38.99**
775 Raw Lumens, Mini Square / GROBZ601-5 / **39.99**
4800 Raw Lumens, Small Cube / GROBZ221-5 / **45.99**
2160 Raw Lumens, Magnetic / GROBZ421-5 / **98.99**

112⁹⁹
ea.



Trilliant®

Pendant Mount, Far Flood / GR064G01-5
Pendant Mount, Near Flood, with Pigtail / GR064G11-5

Grote

CHEMICAL PRODUCTS



1⁹⁹

Fifth Wheel Grease, 57 g
PTX01010



9⁹⁹

Battery Protector & Sealer, 141 g
PTX29224



STARTING AT
9⁹⁹

Indicator Pastes

Orange, 30 ml / PTX24165 / **9.99**
Yellow, 30 ml / PTX24166 / **14.99**



7⁹⁹

Glass & Stainless Cleaner, 600 g
PTXC23319



9⁹⁹

Heavy Duty Cleaner, 946 ml
PTXC26832



STARTING AT
33⁹⁹

Threadlockers

Blue, 36 ml / PTX24242 / **33.99**
Red, 36 ml / PTX26242 / **35.99**



7⁹⁹

Safer Scraper
PTX59101



27⁹⁹

1 Minute Gasket Maker, Black, 147 ml
PTX30874



18⁹⁹

High Temperature Thread Sealant, 50 ml
PTX59234



STARTING AT
6⁴⁹



Greases

Gadus S2 V30KC 1, 400 g / SHE550027635 / **6.49**
Gadus S2 V220 2, 400 g / SHE550027631 / **6.99**
Gadus S3 V220C 2, 400 g / SHE550075629 / **6.99**
Gadus S3 V220C 1, 400 g / SHE550027557 / **6.99**
Gadus S4 V600AC 1.5, 400 g / SHE550027634 / **6.99**
SRS 2000 Extreme Grease, 400 g / SHE550032579 / **8.99**
Gadus S3 V460XD 2, 400 g / SHE550027656 / **9.99**



9⁴⁹

KL-FSM Extreme Duty Chain Lube, 400 g
KRO63400



8⁹⁹

KP-53 Solvent Free Penetrating Oil, 400 g
KRO51400



8⁹⁹

KL-73 Corrosion Inhibitor and Lubricant, 400 g
KRO71400

CHEMICAL PRODUCTS

12⁹⁹

Moly Heavy Duty Industrial Grease, 435 g
PRO293400



22⁹⁹

PL-100 Super Penetrating Lubricant, 350 g
PRO598350



14⁹⁹

GS-1000 Grease, All-Purpose, 415 g
PRO288400



9⁹⁹

D-Ice Lub Lubricant De-Icer for Locks, 50 g
PRO587050



STARTING AT
26⁹⁹

DBF-4 Diesel Fuel Additives

1 L / PRO390001 / **26.99**
4 L / PRO390004 / **79.99**

PROLAB



23⁹⁹

ALD-3 Lubricant D-Icer, 1 L
PRO537001



Available on request

299⁹⁹

Antigel, Lubricant, De-Icer, Air Brake Lines, 20 L
PRO537020



Available on request

477⁹⁹

Full Synthetic Gear Oil, 75W-90-S, 18,9 L
PRO583020



TOOLS & EQUIPMENT

315⁹⁹

Pin-Type Safety Stands, Pair, 22 Ton
STR032220



STARTING AT
1.49

X300 Series Safety Glasses

Clear / STRS70701 / **1.49**
Amber / STRS70711 / **1.49**
Smoked / STRS70721 / **1.49**
Indoor & Outdoor / STRS70731 / **1.99**

SureWerx



27⁹⁹

K1 Series® Mid-Sole Ice Cleat, Original Profile, Hi-Vis Strap, One Size Fits All
STRV9770150-0/S



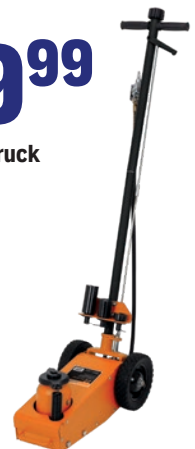
467⁹⁹

Brake Drum Handler, Heavy Duty
STR030483



699⁹⁹

Air/Hydraulic Truck Jack, 22 Ton
STR030670



TOOLS & EQUIPMENT

STARTING AT
49⁹⁹



Quick Couplers

1/4" Industrial Steel / TOP20.646C / **49.99**
3/8" Industrial Composite / TOP21.469C / **69.99**

46⁹⁹

Blow Gun, 1/4"
NPT with 8 mm x
10 cm Nozzle
TOP60.390C



TOPRING

39⁹⁹

Quick Coupler,
1/4" Industrial Steel
TOP20.446C



STARTING AT
11⁹⁹

Pressure Gauges

Pencil Tire, 10 to 120 PSI / TOP63.410C / **11.99**
Pencil Tire, 5 to 50 PSI for Tractor / TOP63.440C / **16.99**
Dual Head, 15 cm, 10 to 120 PSI / TOP63.500C / **19.99**
Dual Head, 30 cm, 10 to 150 PSI / TOP63.540C / **37.99**
Dual Head, 28 cm, 10 to 150 PSI / TOP63.570C / **44.99**



7⁹⁹

Tire Tread Depth Indicator
TOP63.700C

STARTING AT
6⁹⁹

Air Chuck

Hexagonal, 1/4" (F) NPT / TOP63.130C / **6.99**
Hexagonal, Clip-On, 1/4" (F) NPT / TOP63.110C / **15.99**
Large Bore, 1/4" (F) NPT / TOP63.105C / **89.99**



189⁹⁹

**Steel Swivel
Adapter, 3/8" (F)
to 3/8" (M) NP**
TOP62.334C



199⁹⁹

Rubber Hose,
1/2" I.D., 25'
TOP75.415

24⁹⁹

**Mineral Oil for
Air Tools, 1 L**
TOP69.101



134⁹⁹

**Digital Tire
Inflation Gauge, 7
to 174 PSI**
TOP63.661

TOOLS & EQUIPMENT

69⁹⁹

Premium Meltblown Sorbent Pads, Oil Only, 15" x 17", 30 gal. Absorbency, Pack of 100
SCNSEH942



103⁹⁹
ea.



Premium Vehicle Spill Kits

Universal, Bag, 10 US gal. Absorbency / SCNSEI183
Oil Only, Bag, 10 US gal. Absorbency / SCNSEI184



18⁹⁹

First Aid Kit, Class 1 Medical Device, Plastic Box
SCNSAP137

SCN Industrial



7⁹⁹

Winter-Lined Chemical-Resistant Gloves, Foam Fleece Inner Lining
SCNSDN592

***January 1 to 31, 2026**

1,649⁹⁹*

M18 FUEL™, D-Handle, High Torque Impact Wrench w/ ONE-KEY™
MWK2869-22HD



298⁹⁹*

Orbital Reciprocating Saw, Brushless Cordless, M18™ 18V (Tool Only)
MWK2722-20



298⁹⁹*

Transfer Pump, Lithium-Ion Cordless M18™ 18V 1/4 HP (Tool Only)
MWK2771-20



WALTER
Surface Technologies
Only the best.™

Thin Cut-Off Wheels

Zipcut™, 4-1/2" x 3/64" x 7/8" / WST11T042 / **4.99**
Zipcut™, 4-1/2" x 3/64" x 7/8" / WST11T142 / **4.99**
Zip™, 3" x 1/32" x 3/8" / WST11L303 / **4.99**
Zipcut™, 5" x 3/64" x 7/8" / WST11T152 / **5.99**
Zipcut™, 6" x 3/16" x 7/8" / WST11T062 / **6.99**



****February 1 to 28, 2026**

428⁹⁹**

Grease Gun, Cordless, M18™ 18V with (2) Batteries
MWK2646-22CT



648⁹⁹**
ea.



M18™ Impact Wrench Kits

1/2", High Torque with Friction Ring / MWK2967-22
3/4", High Torque with Friction Ring / MWK2864-22R

HD PLUS OUR PRIVATE BRAND



OEM QUALITY WITHOUT COMPROMISE

When a product bears the HD Plus logo, you can rest assured that it has been **manufactured according to the highest standards**. Our replacement parts are designed to meet the same standards as OEM parts.

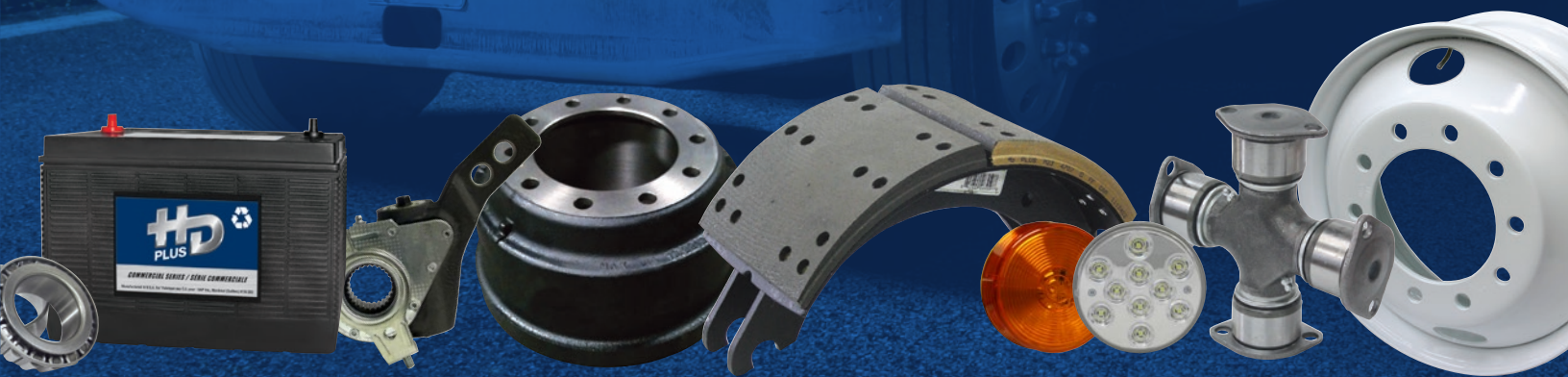
We make no compromise on material quality, product performance or quality control. The only concession made is on the price!

EXCEPTIONAL PRICING

By choosing HD Plus products, you can **reduce your parts acquisition costs** without affecting performance.

UNRIVALLED WARRANTY

The HD Plus brand offers a warranty **equal or superior** to national brands, to ensure your peace of mind.



 **14,000 OTHER PRODUCTS**



WIDE PRODUCT SELECTION

- Brake shoes
- Slack adjusters
- Brake drums
- Diesel particulate filters
- Wheels
- Bearings
- Seals
- Spring brakes
- Valves
- Leaf springs
- Batteries
- Radiators
- LED lights
- And much more!

Firestone
AIRIDE

219⁹⁹

Air Spring, 1T19LC-6
FIRW01-358-8091

See the full selection on page 7



MONROE
COMMERCIAL VEHICLE

64⁹⁹

65 Series Shock Absorber,
Stroke: 5-1/8"
MON65416

See the full selection on page 8



Grote

159⁹⁹

Heated LED Sealed Beam
Headlight, 4" x 6" Low Beam
GR064J61-5

See the full selection on page 9



HD
PLUS

99⁹⁹

Brake Chamber,
Stroke: 2-1/2 po, Push Rod: 12 po
TSEHD12581C

See the full selection on page 2



Prices available only in stores properly identified. While we strive for accuracy in product descriptions and pricing, we cannot be held responsible for technical or typographical errors which may appear in this flyer. Prices are subject to change without notice. Some parts may not be in stock in all stores. Transportation expenses may apply. Environmental charges may apply to certain products. All taxes are extra. We reserve the right to limit quantities.

TRACTION 
WINTER
EVENT