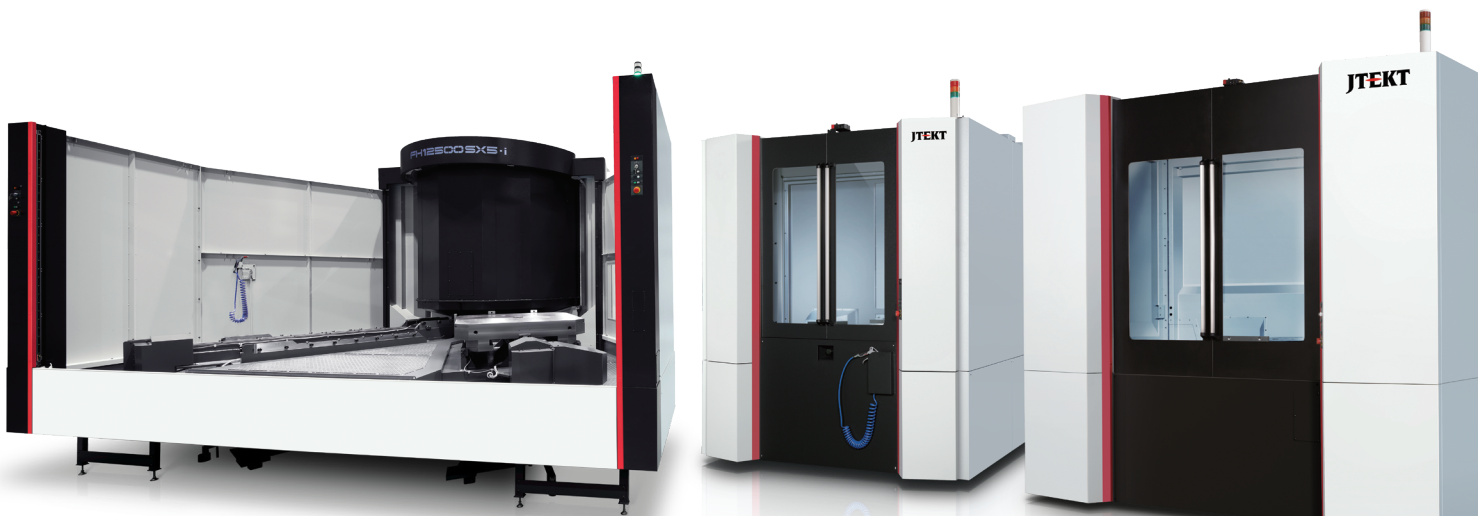


Product Range

---

# HORIZONTAL MACHINING CENTERS

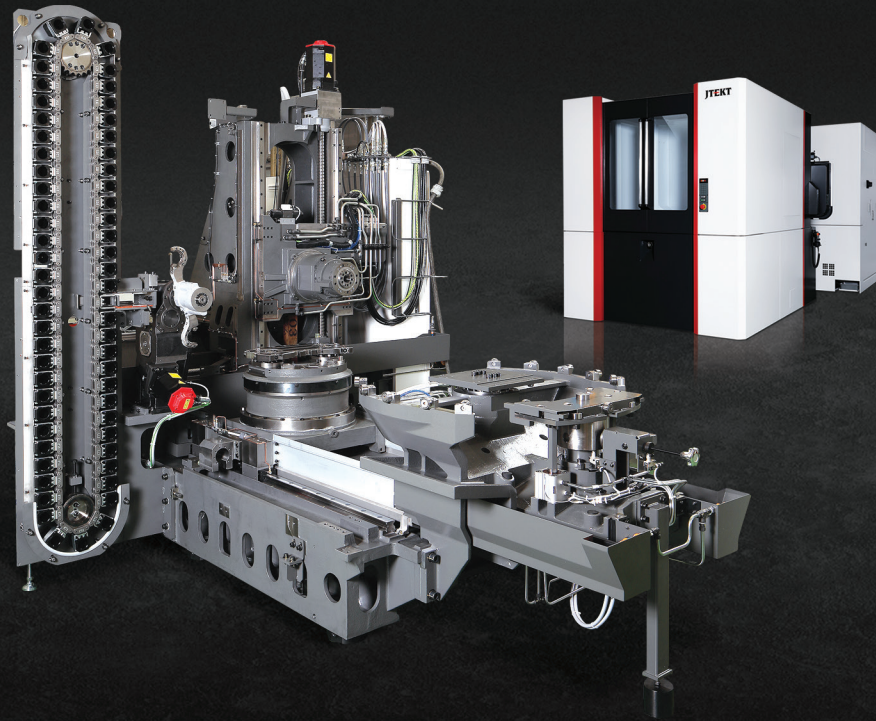


# FH5000 SERIES

HIGH SPEED HORIZONTAL MACHINING CENTERS

## SUPERIOR RIGIDITY. EXCEPTIONAL PRECISION.

Designed to achieve remarkable speed and production reliability, JTEKT's FH5000 Series meets the growing demand for high metal removal rates, short cycle times and superior surface finishes. Equipped with a direct drive B-axis table featuring an index time (90°) of 0.7 seconds - the FH5000's spindle design, preload system and high torque features allow manufacturers to take advantage of more aggressive, high-volume machining in a compact footprint.



### REDUCTION OF CYCLE TIME

- 1.2G Acceleration in Z-Axis
- 2.4 second Chip to Chip Time
- 1.7 second Spindle Acceleration
- .7 second 90deg DD Table Index

### FIT LARGER PARTS IN A SMALLER SPACE

- Largest Work Capacity in the 500 HMC Class
- Increase Pallet Run Time with Increased Density
- Highest Capacity Table Load at 2200lbs
- Ultra-Compact Machine Footprint

### BUILT FOR EASE OF OPERATION

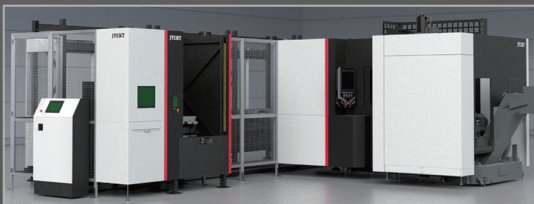
- Toyopuc Touch HMI Machine Control Pendant
- Built on Industry Standard FANUC 31IMB Control
- Standard Adaptive Cutting Control Function
- Standard Maintenance Integrated Control Suite

## ▶ JTEKT AUTOMATION

MAXIMUM PRODUCTIVITY

### JTEKT METALCUTTING CELLS

Automating the metal cutting process can bring production to a whole new level of efficiency and profitability. Run multiple machines from a central PC to automate production scheduling, slash set-up times, reduce labor costs and improve throughput. Depending on your production requirements, numerous combinations of loading stations, machining centers and pallet storage styles are possible. TIPROS software and hardware can easily be upgraded or expanded at any time.

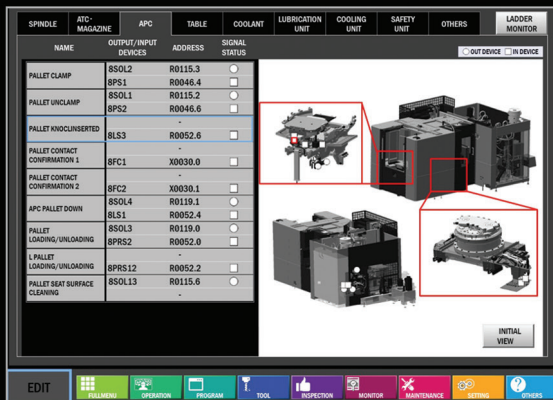




# TOYOPUC-Touch

## SIMPLE OPERATION. ADVANCED INSIGHT.

JTEK's TOYOPUC-Touch HMI is a fully functional touch screen overlay, running on FANUC 3i1MB Plus. The system is easy to learn and navigate, and includes built in advanced functionality for machine operators, maintenance technicians, and manufacturing management.

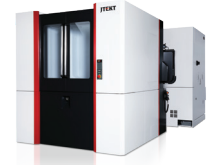
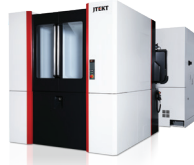


## JTEKT

### BUILT-IN STANDARD TOYOPUC TOUCH FEATURES:

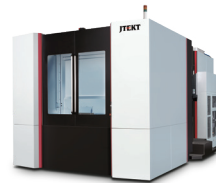
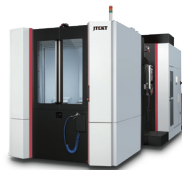
- Quick and simple navigation featuring easy-to-learn, user-friendly controls
- Ability to easily toggle between the TOYOPUC-Touch overlay and native FANUC operation screens
- Built-in reporting that monitors energy usage, productivity, tool life and more
- A navigation bar present on all screens; allowing users to move throughout multiple sections
- Automated maintenance reminders with detailed instructions on performing inspections
- The ability for maintenance staff to view the HMI on a tablet or mobile device using Teamviewer
- A "Diagnostic Data Collection" button, to backup data such as ladder logic, parameter and offsets
- A simplified repair process with step-through procedure for common issues, such as ATC recovery
- Ability to record, send video and upload tool images to operators via USB
- On-board storage of all machine maintenance, operation and tooling manuals
- Lock-out control features, based on defined criteria for operators, programmers and maintenance

## FH5000



Specification / Model	Unit	FH5000S-i	FH5500S-i	FH5500SX-i
Pallet Size	in (mm)	21.65 x 21.65 (550 x 550)	21.65 x 21.65 (550 x 550)	21.65 x 21.65 (550 x 550)
X-axis Travel (column)	in (mm)	35.40 (800)	31.50 (900)	35.40 (900)
Y-axis Travel (spindle head)	in (mm)	31.50 (800)	31.50 (800)	31.50 (800)
Z-axis Travel (work table)	in (mm)	34.60 (880)	34.60 (880)	34.60 (880)
Max. Workpiece Swing (diameter)	in (mm)	35.40 (900)	35.40 (900)	35.40 (900)
Max. Workpiece Height	in (mm)	43.30 (1,100)	43.30 (1,100)	43.30 (1,100)
Maximum Load on Pallet	lb (kg)	2,200 (1,000)	2,200 (1,000)	2,200 (1,000)
Spindle Torque	ft-lb (Nm)	223 (303)	223 (303)	390 (530)
Spindle Speed	RPM	15,000 / 20,000opt.	15,000	15,000
Spindle Taper	-	CAT40	CAT50	CAT50
Rapid Feedrate (X,Y and Z)	ipm (m/min)	2,362 (60)		
Tool Storage Capacity	number	60, 90, 120, 180, 240, 330	60, 120, 240, 330	60, 120, 240, 330

## 630 / 800 / 1000 mm Pallet



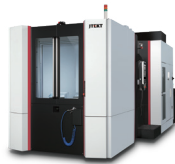
Specification / Model	Unit	FH630SX-i	FH800SX-i	FH1000SX
Pallet Size	in (mm)	24.80 x 24.80 (630 x 630)	31.50 x 31.50 (800 x 800)	39.37 x 31.5 (1,000 x 800)
X-axis Travel (column)	in (mm)	41.34 (1,050)	57.09 (1,450)	62.99 (1,600)
Y-axis Travel (spindle head)	in (mm)	35.43 (900)	49.21 (1,250)	55.11 (1,400)
Z-axis Travel (work table)	in (mm)	41.34 (1,050)	61.02 (1,550)	72.83 (1,850)
Max. Workpiece Swing (diameter)	in (mm)	46.06 (1,170)	59.05 (1,500)	70.86 (1,800)
Max. Workpiece Height	in (mm)	49.21 (1,250)	59.05 (1,500)	62.99 (1,600)
Maximum Load on Pallet	lb (kg)	3,300 (1,500)	5,500 (2,500)	6,600 (3,000) [Opt. 8,800 (4,000)]
Spindle Torque	ft-lb (Nm)	887 (1,202)	887 (1,202)	887 (1,202)
Spindle Speed	RPM	8,000, 15,000	8,000, 15,000	8,000, 15,000
Spindle Taper	-	CAT50	CAT50	CAT50
Rapid Feedrate (X,Y and Z)	ipm (m/min)	2,362 (60)	2,126 (54)	2,126 (54)
Tool Storage Capacity	number	60, 121, 240, 330	60, 121, 240, 330	60, 121, 240, 330

## 1250 / 1600 mm Pallet



Specification / Model	Unit	FH1250SX-i Direct Drive	FH12500 Gear/Quill	FH1600SW-i
Pallet Size	in (mm)	49.21 x 49.21 (1,250 x 1,250)	49.21 x 49.21 (1,250 x 1,250)	49.21 x 62.99 (1,250 x 1,600)
X-axis Travel (column)	in (mm)	94.50 (2,400)	94.50 (2,400)	118.11 (3,000)
Y-axis Travel (spindle head)	in (mm)	70.80 (1,800)	63.00 (1,600)	74.80 (1,900)
Z-axis Travel (work table)	in (mm)	72.80 (1,850)	72.80 (1,850)	82.68 (2,100)
W-axis Travel (quill spindle)	in (mm)	-	22.00 (560)	29.50 (750)
Max. Workpiece Swing (diameter)	in (mm)	94.50 (2,400)	94.50 (2,400)	125.90 (3,200)
Max. Workpiece Height	in (mm)	70.80 (1,800)	70.80 (1,800)	86.60 (2,200)
Maximum Load on Pallet	lb (kg)	11,000 (5,000)	11,000 (5,000)	17,600 (8,000)
Quill Diameter	in (mm)	-	5.10 (130)	5.90 (150)
Spindle Torque	ft-lb (Nm)	887 (1,202)	1622 (2,200)	1,560 (2,115)
Spindle Speed	RPM	8,000, 15,000	6,000 / 4,000 Quill	4,000
Spindle Taper	-	CAT50	CAT50	CAT50
Rapid Feedrate (X)	ipm (m/min)	1,654 (42)	1,654 (42)	1,378 (35)
Rapid Feedrate (Y)	ipm (m/min)	1,654 (42)	1,654 (42)	1,575 (40)
Rapid Feedrate (Z)	ipm (m/min)	1,654 (42)	1,654 (42)	1,575 (40)
Tool Storage Capacity	number	60, 120, 240, 330	60, 120, 240, 330	120, 240, 330

## FIVE-AXIS



Specification / Model	Unit	FH630SX-i 5-Axis	FA1050S 5-Axis	FH1250SX 5-Axis
Pallet Size	in (mm)	24.8 x 24.8 (630 x 630)	41.33 x 41.33 (1,050 x 1,050)	49.21 x 49.21 (1,250 x 1,250)
X-axis Travel (column)	in (mm)	31.49 (800)	59.05 (1,500)	86.61 (2,200)
Y-axis Travel (spindle head)	in (mm)	33.46 (850)	55.11 (1,400)	62.99 (1,600)
Z-axis Travel (work table)	in (mm)	41.33 (1,050)	45.27 (1,150)	72.83 (1,850)
Max. Workpiece Swing (diameter)	in (mm)	46.06 (1,170)	51.18 (1,300)	94.49 (2,400)
Max. Workpiece Height	in (mm)	62.99 (1,600)	32.48 (825)	70.87 (1,800)
Maximum Load on Pallet	lb (kg)	3,300 (1,500)	4,400 (2,000)	11,000 (5,000)
Spindle Speed	RPM	8,000, 15,000	6,000, 8,000, 15,000	15,000
Spindle Taper	-	CAT50		
Rapid Feedrate (X,Y and Z)	ipm (m/min)	2,362 ipm (60 m/min), 2,362 ipm (60 m/min), 2,362 ipm (60 m/min)	590 ipm (15 m/min), 944 ipm (24 m/min), 944 ipm (24 m/min)	1,260 ipm (32 m/min), 1,260 ipm (32 m/min), 1,654 ipm (42 m/min)
Tool Storage Capacity	number	60, 120, 240, 330	60, 190, 240, 384	60, 121, 240, 330



**THE COMPLETE RANGE OF  
PRODUCTION SOLUTIONS**

POWERED BY  
**JTEKT**

**WWW.JTEKTMACHINERY.COM**



**JTEKT MACHINERY  
AMERICAS CORPORATION**

**CORPORATE HEADQUARTERS**

316 W. University Drive  
Arlington Heights, IL 60004  
Tel: (847) 253-0340  
Email: [info@jtektmachinery.com](mailto:info@jtektmachinery.com)

**MICHIGAN LOCATION**

51300 W. Pontiac Trail  
Wixom, MI 48393  
Tel: (847) 253-0340  
E-mail: [info@jtektmachinery.com](mailto:info@jtektmachinery.com)

**MECHATRONICS DIVISION**

Georgetown, KY  
Tel: (847) 253-0340  
E-mail: [info@jtektmachinery.com](mailto:info@jtektmachinery.com)

**MEXICO REGIONAL OFFICE**

Ave. Gonzalitos 460 Sur Local 27  
Col. San Jeronimo  
Monterrey, N.L.  
C.P. 64640  
Tel: 01152(81) 34240656

**JTEKT  
SUPPORT**  
800-257-2985 or 847-506-2487

**SERVICE**

E-mail: [service@jtektmachinery.com](mailto:service@jtektmachinery.com)  
Fax: 847-253-2381

**PARTS**

E-mail: [parts@jtektmachinery.com](mailto:parts@jtektmachinery.com)  
Fax: 847-255-0188

**MEXICO PARTS INQUIRIES**

Tel: 01152(81) 34240656  
or 847-506-2487