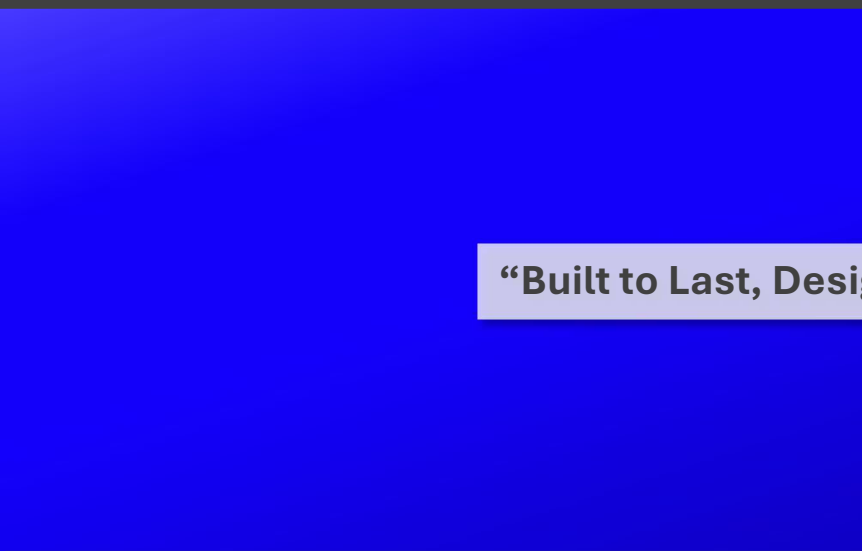




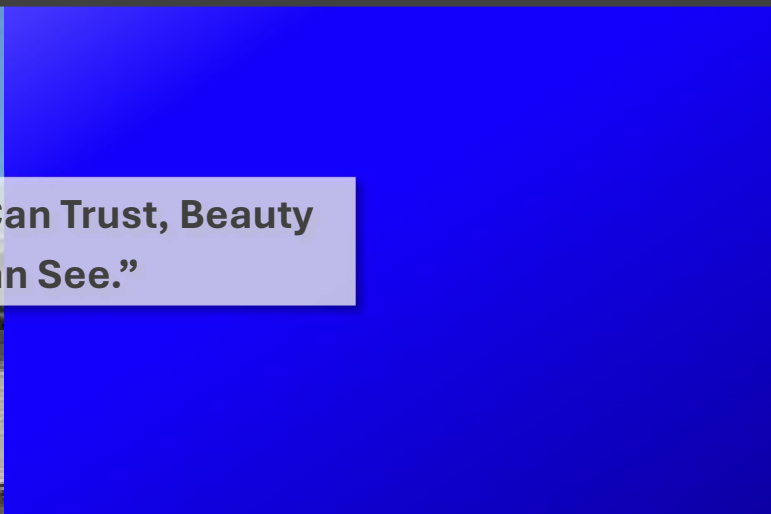
**ARCTIC STEEL**

## PRODUCT CATALOGUE



**“Built to Last, Designed to Impress.”**

Atlantic Canada's Premier Metal Roofing and Siding Dealer



**“Strength You Can Trust, Beauty  
You Can See.”**

**ARCTIC STEEL PRODUCTS LTD.**

1145 Aviation Avenue, Dieppe, New Brunswick E1A 9S5, Canada

**1-506-777-3376**



28  
GAUGE

## Colour Options

Jet  
Black

Slate  
Grey

Grey  
Brown

Terra  
Brown

Platinum  
Grey

Grey  
White

Signal  
White

Emerald  
Green

Sky  
Blue

Signal  
Red

# Riverside Panel

**Strength, Style, and Affordability in One Panel**

**The Elegance of a Standing Seam at an Affordable Price**

The Arctic Steel Panel provides a roofing and siding solution that combines the elegance of a standing seam installation with cost-effectiveness.

Imperial		
Section Properties (Per Foot of Width)		
Total Nominal Thickness (in.)	Base Thickness (in.)	Yield Stress (ksi)
0.019	0.0178	33

Metric		
Section Properties (Per Metre of Width)		
Total Nominal Thickness (mm)	Base Thickness (in.)	Yield Stress (Mpa)
0.484	0.454	230

- **Perfect for both wall and roof applications**
- **Shields against harsh weather conditions**
- **Affordable and easy to install**

**ARCTIC STEEL PRODUCTS LTD.**

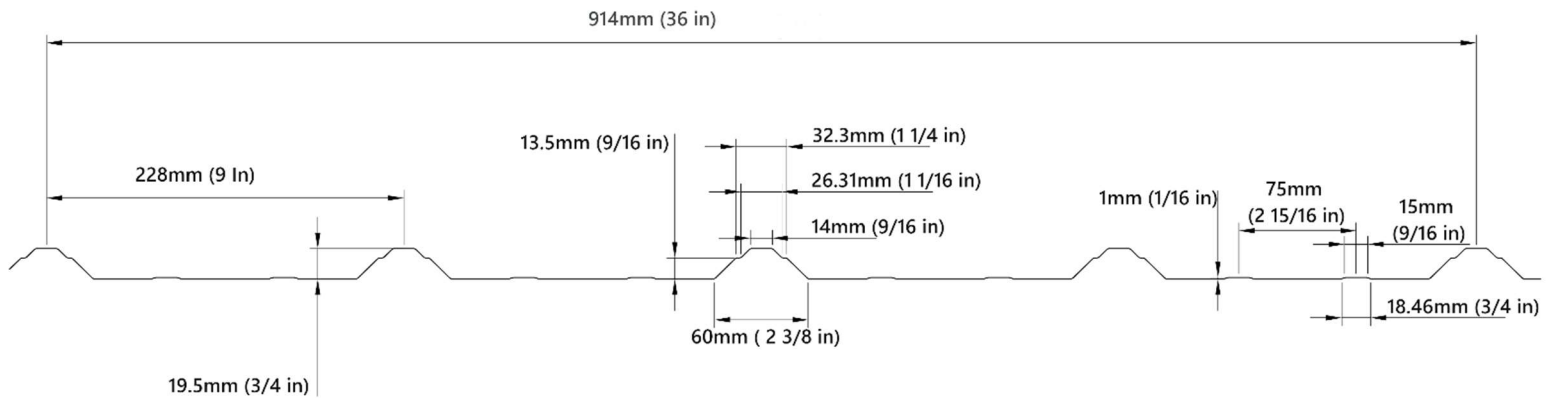
1145 Aviation Avenue, Dieppe, New Brunswick E1A 9S5, Canada

**1-506-777-3376**



- Proudly made in Canada
- Durable and strong
- Amazing look and long lasting

# Riverside Panel



**ARCTIC STEEL PRODUCTS LTD.**

1145 Aviation Avenue, Dieppe, New Brunswick E1A 9S5, Canada

**1-506-777-3376**





26  
GAUGE

# Fox Creek Panel

**Strength, Style, and Affordability in One Panel**

**The Elegance of a Standing Seam at an Affordable Price**

The Arctic Steel Panel provides a roofing and siding solution that combines the elegance of a standing seam installation with cost-effectiveness.

## Colour Options

Jet Black

Slate Grey

Grey Brown

Platinum Grey

Imperial		
Section Properties (Per Foot of Width)		
Total Nominal Thickness (in.)	Base Thickness (in.)	Yield Stress (ksi)
0.021	0.018	33

Metric		
Section Properties (Per Metre of Width)		
Total Nominal Thickness (mm)	Base Thickness (in.)	Yield Stress (Mpa)
0.53	0.5	230

- Perfect for both wall and roof applications
- Shields against harsh weather conditions
- Affordable and easy to install

**ARCTIC STEEL PRODUCTS LTD.**

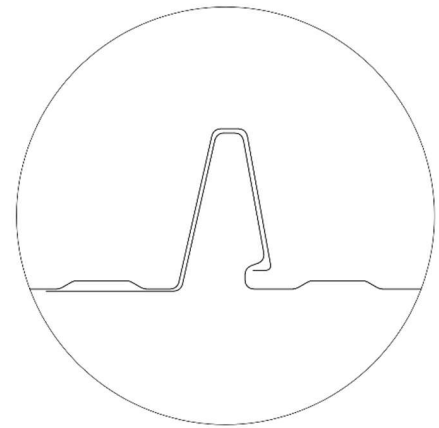
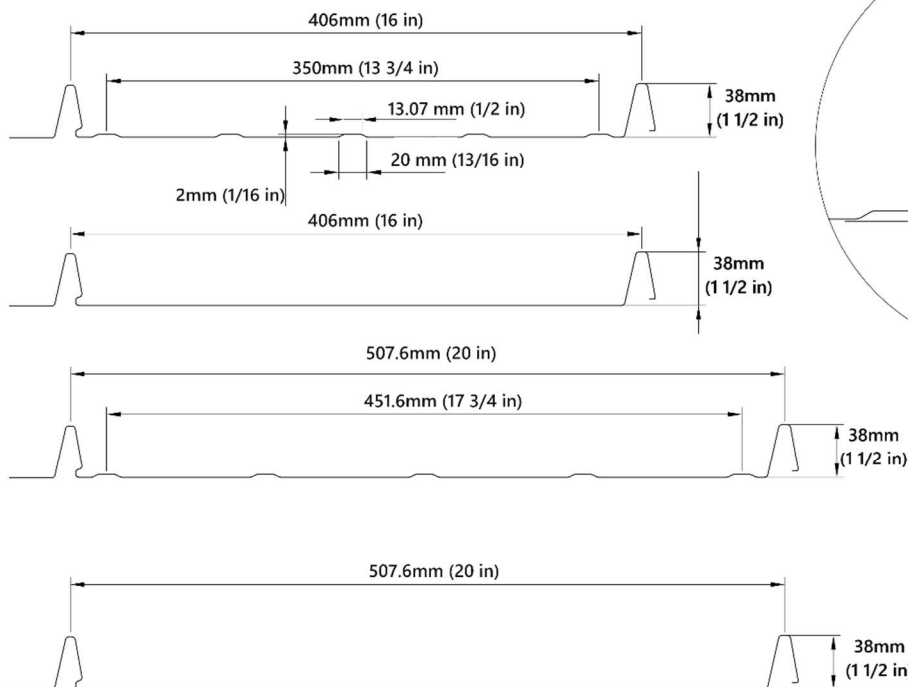
1145 Aviation Avenue, Dieppe, New Brunswick E1A 9S5, Canada

**1-506-777-3376**



- Perfect for both wall and roof applications
- Shields against harsh weather conditions
- Affordable and easy to install

# Fox Creek Panel



**ARCTIC STEEL PRODUCTS LTD.**

1145 Aviation Avenue, Dieppe, New Brunswick E1A 9S5, Canada

**1-506-777-3376**



# Doverwood Panel

## Strength, Style, and Affordability in One Panel

### The Elegance of a Standing Seam at an Affordable Price

The Arctic Steel Panel provides a roofing and siding solution that combines the elegance of a standing seam installation with cost-effectiveness.

Imperial		
Section Properties (Per Foot of Width)		
Total Nominal Thickness (in.)	Base Thickness (in.)	Yield Stress (ksi)
0.021	0.018	33

Metric		
Section Properties (Per Metre of Width)		
Total Nominal Thickness (mm)	Base Thickness (in.)	Yield Stress (Mpa)
0.53	0.500	230

### Colour Options

Jet Black

Slate Grey

Grey Brown

Platinum  
Grey

- Perfect for both wall and roof applications
- Shields against harsh weather conditions
- Affordable and easy to install

## ARCTIC STEEL PRODUCTS LTD.

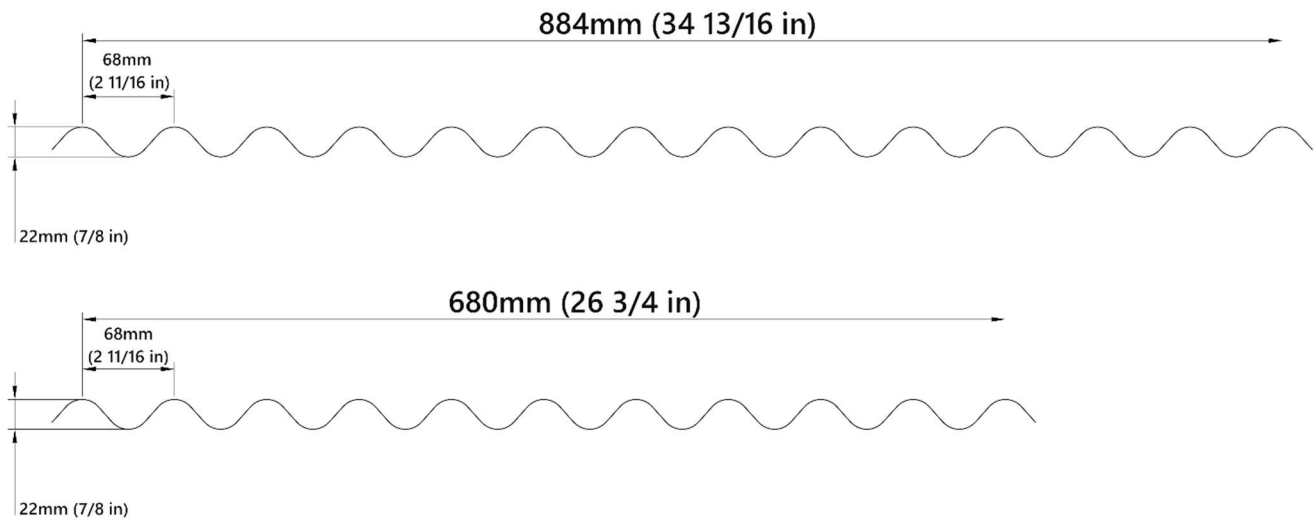
1145 Aviation Avenue, Dieppe, New Brunswick E1A 9S5, Canada

1-506-777-3376



- Perfect for both wall and roof applications
- Shields against harsh weather conditions
- Affordable and easy to install

# Doverwood Panel



**ARCTIC STEEL PRODUCTS LTD.**

1145 Aviation Avenue, Dieppe, New Brunswick E1A 9S5, Canada

**1-506-777-3376**



**ARCTIC STEEL**

# Trim Systems: 26 GAUGE

<b>AS-RC1</b> Ridge Cap		<b>AS-Z1</b> Zee		<b>AS-AF1</b> Angle Flashing		<b>AS-BG1</b> Base Guard		
<b>AS-AF2</b> Angle Flashing		<b>AS-V1</b> Valley Flash						
<b>AS-VW1</b> W-Valley Flash								
<b>AS-TF1</b> Transition Flash								
<b>AS-IC1</b> Inside Corner								
<b>AS-RG1</b> Residential Gable								
<b>AS-DE1</b> Denver Eave		<b>AS-EF1</b> Endwall Flash						
<b>AS-SF1</b> Sidewall Flash								
<b>AS-J1</b> J Channel		<b>AS-C1</b> Corner						
<b>AS-C2</b> Corner								

**ARCTIC STEEL PRODUCTS LTD.**

1145 Aviation Avenue, Dieppe, New Brunswick E1A 9S5, Canada

**1-506-777-3376**





# 40 Year Limited Warranty

## LIMITED 40-YEAR WARRANTY FOR PRE-PAINTED STEEL ROOFING AND SIDING PANELS

### DOVER WOOD, RIVERSIDE & FOX CREEK PANELS

This warranty applies to Arctic Steel Ltd.'s roll-formed, pre-painted steel panels installed within Canada and the Continental United States (including Alaska and excluding Hawaii). Under normal atmospheric conditions (i.e., excluding corrosive or aggressive environments such as chemical fumes, salt spray, or other contaminants), the product is warranted as follows:

#### 1. Coverage

- **Film Integrity:**  
The pre-painted finish will resist cracking, blistering, flaking, or peeling for 40 years from the date of delivery.
- **Chalking:**  
For the first 30 years, vertical installations will chalk no greater than a #8 rating and non-vertical installations no greater than a #6 rating, as measured per ASTM D4214, Method A.
- **Colour Change:**  
For the first 30 years, vertical installations will exhibit a colour change of no more than 5 delta E units and non-vertical installations no more than 7 delta E units. Measurements shall be performed per ASTM D2244 on clean surfaces (after removal of surface deposits and chalk per ASTM D3964) using an approved colourimeter based on CIE standards (expressed in Hunter L, a, and b units).

#### 2. Warranty Coverage & Remedies

- **Inspection:**  
Customers must inspect all delivered materials prior to installation to ensure they meet the required specifications.
- **Remedies:**  
If a valid warranty claim is approved, Arctic Steel Ltd. (through its designated paint supplier) will, at its discretion, refinish or replace the affected panels. The cost of such remedy will not exceed the original purchase price, and any corrected area shall continue under the prorated balance of the original warranty period.

#### 3. Limitations & Exclusions

This warranty does **not** cover defects, damage, or failures resulting from:

- **Environmental Exposure:**  
Corrosive or aggressive atmospheres (e.g., chemical fumes, salt spray, standing water, insufficient ventilation, abnormal atmospheric conditions such as hail, high-pressure water spray, corrosive chemicals, animal excrements, airborne contaminants, etc.).
- **Installation & Handling:**
  - Improper installation (including failure to maintain adequate panel pitch for non-vertical installations).
  - Damage caused by panel contact with fasteners (selection of appropriate, long-lasting fasteners is the buyer's sole responsibility).
  - Handling, shipping, transit, processing, or improper storage.
- **Mechanical & Material Issues:**
  - Cut-edge corrosion, failure of the metal substrate, or damage from steel shavings and minute particles generated during sawing.
  - Minor hairline cracking or minor colour variances between separate orders.
- **External Causes:**  
Damage resulting from acts of God; falling objects; explosions; fire; riots; civil commotions; acts of war; excessive radiation; or any other events beyond the control of Arctic Steel Ltd.
- **Non-uniform Exposure:**  
Damage to the pre-painted finish when panels are subjected to non-uniform conditions of exposure or use.

#### 4. Claims & Conditions

- **Submission:**  
All warranty claims must be submitted in writing within 30 days of discovering a defect. Claims must include adequate documentation (such as the original invoice or shipping control copy from Arctic Steel Ltd.). Documentation from installers or distributors will not be accepted.
- **Inspection:**  
Arctic Steel Ltd. reserves the right to inspect the affected panels before determining the corrective action.

#### 5. Warranty Exclusivity & Limitation of Liability

- This express warranty is the exclusive remedy available to the building owner on whose property the panels are installed, and it is non-transferable.
- Arctic Steel Ltd. makes no other warranties—express or implied (including warranties of merchantability or fitness for a particular purpose).
- In no event shall Arctic Steel Ltd.'s total liability exceed the original purchase price of the affected panels, nor shall it be liable for any direct, indirect, incidental, or consequential damages (including damages related to labor, loss of use, or any other related costs).

#### 6. Modification & Governing Law

- Arctic Steel Ltd. reserves the right to modify or terminate this warranty for orders not yet accepted, provided that any modifications will be communicated in writing.
- This warranty is governed by and shall be interpreted in accordance with the laws of New Brunswick or Canada.

**ARCTIC STEEL PRODUCTS LTD.**

1145 Aviation Avenue, Dieppe, New Brunswick E1A 9S5, Canada

**1-506-777-3376**



**ARCTIC STEEL**

## Local Sample Jobs:



**ARCTIC STEEL PRODUCTS LTD.**

1145 Aviation Avenue, Dieppe, New Brunswick E1A 9S5, Canada

**1-506-777-3376**



Arctic Steel is a leading Canadian manufacturer of premium steel siding and roofing solutions. With over 25 years of experience in the industry, we are committed to delivering high-quality, durable, and aesthetically pleasing products that meet the diverse needs of our customers. Our state-of-the-art manufacturing facility, located in the heart of Canada, utilizes advanced technology and sustainable practices to produce steel siding and roofing that can withstand the harshest weather conditions.

- **Quality:** High-quality, durable, and aesthetically pleasing products.
- **Technology:** Advanced manufacturing facility with sustainable practices.
- **Weather Resistance:** Products designed to withstand the harshest weather conditions.
- **Customer Service:** Exceptional service with customized solutions for residential, commercial, and industrial projects.
- **Expert Team:** Skilled professionals ensuring high standards of quality and craftsmanship.
- **Satisfaction:** Reliable, long-lasting, and environmentally friendly solutions with customer satisfaction as the top priority.

At Arctic Steel, we pride ourselves on our exceptional customer service and our ability to provide customized solutions for residential, commercial, and industrial projects. Our team of skilled professionals works closely with clients to ensure that every project is completed to the highest standards of quality and craftsmanship. Whether you're looking to enhance the curb appeal of your home or protect your commercial property, Arctic Steel has the expertise and products to make your vision a reality.

**Choose Arctic Steel for reliable, long-lasting, and environmentally friendly steel siding and roofing solutions. Your satisfaction is our top priority!**

## **ARCTIC STEEL PRODUCTS LTD.**

1145 Aviation Avenue, Dieppe, New Brunswick E1A 9S5, Canada

**1-506-777-3376**





# ARCTIC STEEL

## ARCTIC STEEL LTD.

1145 Aviation Avenue  
Dieppe, New Brunswick  
E1A 9S5, Canada

**1-506-777-3376**

