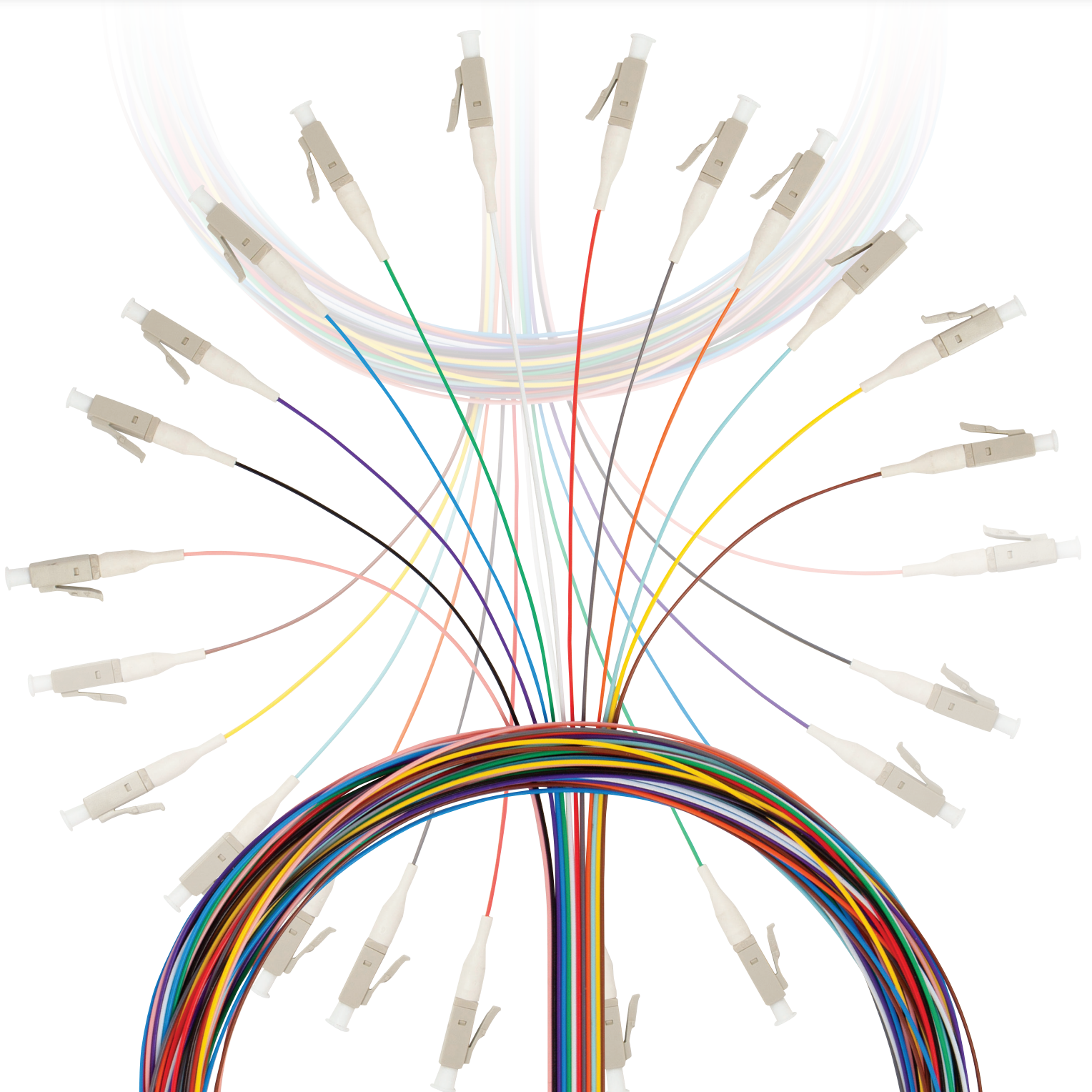


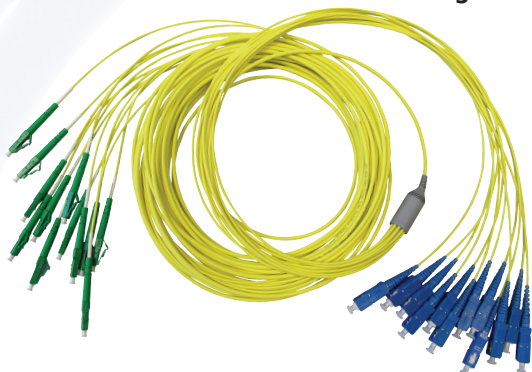


Fiber Optic Solutions

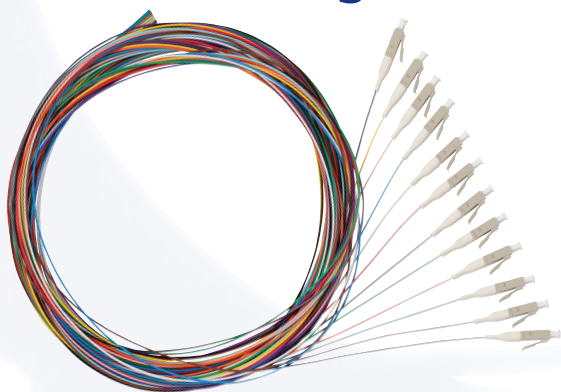


Fanout Cables

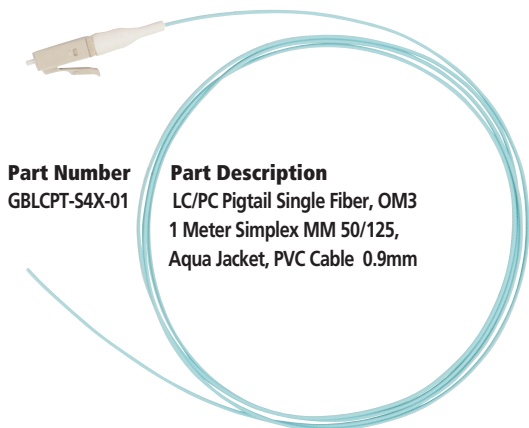
Contact Customer Service for ordering



Pigtails Multi & Single Strand



Part Number	Part Description
GBLCPT12F-SM-03	LC/UPC Pigtail Color Coded 12 Fiber Single Mode 3 Meter Simplex SM 9/125, PVC Cable 0.9mm
GBLCPT12FOM3-03	LC/UPC Pigtail Color Coded 12 Fiber, OM3 3 Meter Simplex MM 50/125, PVC Cable 0.9mm
GBLCPT12FOM4-03	LC/UPC Pigtail Color Coded 12 Fiber, OM4 3 Meter Simplex MM 50/125, PVC Cable 0.9mm



Part Number	Part Description
GBLCPT-S4X-01	LC/PC Pigtail Single Fiber, OM3 1 Meter Simplex MM 50/125, Aqua Jacket, PVC Cable 0.9mm

Other
configurations
are available
upon request.

Part Number	Part Description
GBLCPT-S2X-01	LC/PC Pigtail Single Fiber, OM1 1 Meter Simplex MM 62.5, Orange Jacket, PVC Cable 0.9mm



AT70 Series Faceplates

Part Number	Part Description	Std. Pkg. Qty.	Std. Ctn. Qty.
AT70-X-XX	1 to 6 Port Faceplate w Designation Labels & Windows	25	200

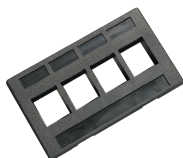
Please refer to our Catalog or at www.allentel.com for complete info



AT30 Series Faceplates

Part Number	Part Description	Std. Pkg. Qty.	Std. Ctn. Qty.
AT30-X-XX	1 to 6 Port Faceplate	25	200

Please refer to our Catalog or at www.allentel.com for complete info



Furniture Faceplates

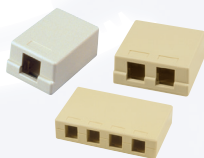
Part Number	Part Description	Std. Pkg. Qty.	Std. Ctn. Qty.
AT4FM	4 Port Furniture Faceplate Black	1	100



Stainless Steel Faceplates

Part Number	Part Description	Std. Pkg. Qty.	Std. Ctn. Qty.
ATBKF-XX	1 to 6 Port Faceplate	1	25
ATBKDV-XX	4 to 8 Port Double Gang Faceplate	1	15

Please refer to our Catalog or at www.allentel.com for complete info



Versatap Surface Mounting Boxes

Part Number	Part Description	Std. Pkg. Qty.	Std. Ctn. Qty.
AT3X-X-XX	Surface Box with 1, 2, 4, or 6 Port for Versatap Modules	1	XX

Please refer to our Catalog or at www.allentel.com for complete info

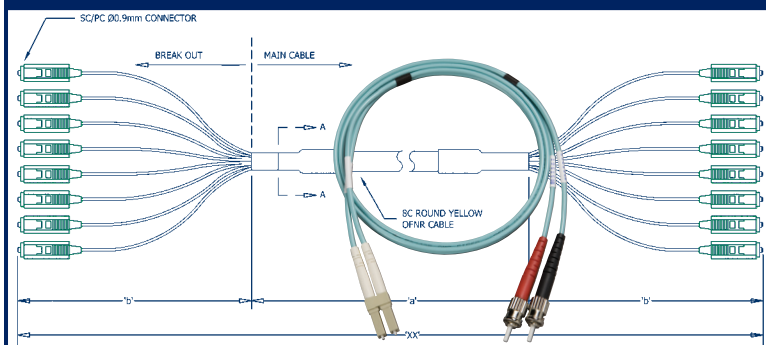


Versatap Patch Panels

Part Number	Part Description	Std. Pkg. Qty.	Std. Ctn. Qty.
ATPNL-XX	12 to 128 Port, 1.70" H to 14" H, 1 RU to 8 RU	1	1

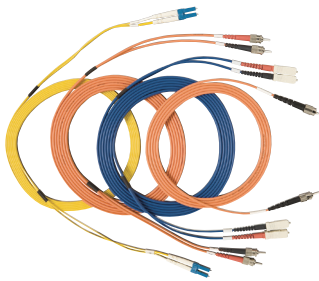
Please refer to our Catalog or at www.allentel.com for complete info

Customization & Kitting

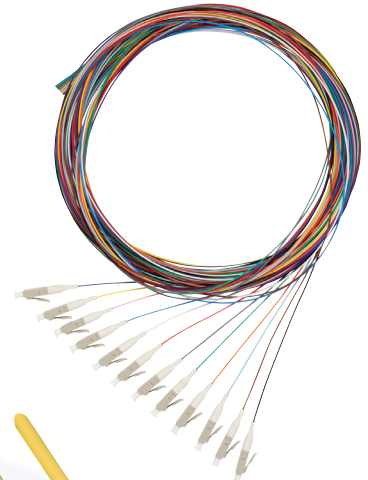


- Custom Configurations regularly available
- Made to Order
- Special Packaging, Labeling & Kitting
- Quick Turnaround
- See Allentel.com - for complete product information and specs

Fiber Optic Cable Assemblies



- Full line of high quality single mode and multimode fiber optic assemblies
- All cables are 100% tested for insertion loss and back reflection
- Available in industry standard lengths in meters
- Individual removable dust covers
- Custom configurations available
- Pigtails are available upon request



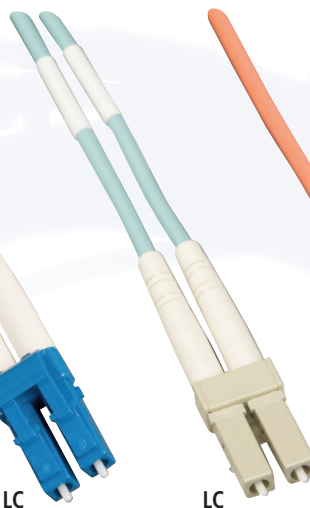
MTRJ-M



MTRJ-F



LC



LC



ST



SC

GB SC2 - D 4 - 03

Connector to Connector Configurations

FC2	FC to FC
FCC	FC to SC
FCT	FC to ST
LC2	LC to LC
LCC	LC to SC
LCT	LC to ST
MF2	MTRJ Female to MTRJ Female
MFC	MTRJ Female to SC
MFL	MTRJ Female to LC
MFT	MTRJ Female to ST
MM2	MTRJ Male to MTRJ Male
MMC	MTRJ Male to SC
MMF	MTRJ Male to MTRJ Female
MMT	MTRJ Male to ST
SC2	SC to SC
ST2	ST to ST
STC	ST to SC

Length

01 - 1 Meter	08 - 8 Meter
02 - 2 Meter	09 - 9 Meter
03 - 3 Meter	10 - 10 Meter
04 - 4 Meter	15 - 15 Meter
05 - 5 Meter	20 - 20 Meter
06 - 6 Meter	25 - 25 Meter
07 - 7 Meter	30 - 30 Meter

Fiber

- 1 - Single Mode 9/125 OS1 (Yellow Jacket)
Insertion loss < 0.2dB
- 2 - Multimode 62.5/125 OM1 (Orange Jacket)
Insertion loss < 0.3dB
- 3 - Multimode (Only) 50/125 OM2 (Blue Jacket)
Insertion loss < 0.3dB
- 4 - Multimode (Only) 50/125 850nm OM3
laser-optimized 10Gb (Aqua Jacket)
Insertion loss < 0.2dB
- 5 - Multimode (Only) 50/125 850nm OM4
laser-optimized 10Gb
Insertion loss < 0.2dB

Cable Type

- S - Simplex
D - Duplex

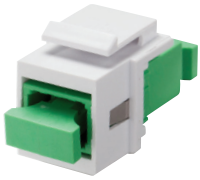
Ordering Example

GBSC2-D4-03

10Gb SC to SC duplex 50/125 microns laser-optimized multimode - 3 Meters

Available in: PC (Physical Contact) Polish
Special/Custom APC (angled Physical Contact) Polish
Special/Custom UPC (Ultra Physical Contact) Polish

Cat 3, 5e, 6 & 6A Jacks & E-Z Jacks



SC Fiber Adapter

APC Polish with modular keystone

- Compatible with Versatap products for complete modularity
- Protective cap fully surrounds split sleeve opening
- Can be used with multimode or single mode jumpers

AT32SCAPC-15

Std. Pkg. Qty. **Std. Ctn. Qty.**
1 50



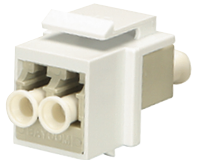
SC Fiber Adapter

Module supplied with one SC simplex fiberoptic adapter with zirconia ceramic split sleeve

- Compatible with Versatap products for complete modularity
- Protective cap fully surrounds split sleeve opening
- Can be used with multimode or single mode jumpers

XX Colors: 09-Ivory; 52-El Ivory

Std. Pkg. Qty. **Std. Ctn. Qty.**
1 50



LC Fiber Adapter

LC multimode duplex fiber optic adapter module

- Compatible with Versatap products for complete modularity
- Can be used with multimode or single mode jumpers
- LC Duplex Adapter Modules are commonly used with Versatap outlets and panels

AT32LC-XX

XX Colors: 09-Ivory; 15-White; 52-El Ivory

Std. Pkg. Qty. **Std. Ctn. Qty.**
1 100



MTRJ Fiber Adapter

MT-RJ multimode duplex fiber optic adapter module

- Compatible with Versatap
- Can be used with multimode or single mode jumpers
- Versatap MT-RJ Duplex Adapter Modules are commonly used with Versatap outlets and panels

AT32MTRJ-XX

XX Colors: 09-Ivory; 15-White; 52-El Ivory

Std. Pkg. Qty. **Std. Ctn. Qty.**
1 100



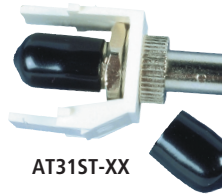
Versatap Blank Module

One position, reserves space for future use

- Fills in openings on outlet to prevent tampering
- Compatible with Versatap modular patch panels, and outlets
- Compatible with high density patch panels

XX Colors: 00-Black; 09-Ivory; 14-Grey;
15-White; 52-El Ivory

Std. Pkg. Qty. **Std. Ctn. Qty.**
5 300



ST Fiber Adapter

ST multimode simplex fiber optic adapter module

- Compatible with Versatap products for complete modularity
- Can be used with multimode or single mode jumpers
- Versatap Simplex Adapter Modules are commonly used with Versatap outlets and panels
- Compatible with high density patch panels

AT31ST-XX

XX Colors: 09-Ivory; 15-White

Std. Pkg. Qty. **Std. Ctn. Qty.**
1 100

Plenum Cables

- Plenum, aqua jacket
- Duplex multimode
- Laser-optimized 50/125 850nm OM3
- 100% tested for insertion loss and back reflection
- Individual removable dust covers
- Custom configurations available with quick turnaround

SC-SC Connectors
GBSC2-D4PL-XX

LC-LC Connectors
GBLC2-D4PL-XX

XX Standard Lengths

01 - 1 Meter	08 - 8 Meter
02 - 2 Meter	09 - 9 Meter
03 - 3 Meter	10 - 10 Meter
04 - 4 Meter	15 - 15 Meter
05 - 5 Meter	20 - 20 Meter
06 - 6 Meter	25 - 25 Meter
07 - 7 Meter	30 - 30 Meter

Note:
Custom lengths available upon request.

LC-SC Connectors
GBLCC-D4PL-XX

Wall and Rack Enclosures



Wall Mount GB212

Graybar ID# 25077900

Will accept up to 2 panels, 6 or 8 port. Comes with mounting hardware, internal cable management and labels for accurate cable administration. Equipped with door lock and keys. Includes cable management kit. Constructed of 18 gauge steel.

Height 8" (205mm), Width 13" (330mm), Depth 3.5" (89mm)



Rack Mount GB324

Graybar ID# 25077901

Will accept 3 panels, 6 or 8 port. Comes with mounting hardware, internal cable management and labels for accurate cable administration. Equipped with sliding tray. Includes cable management kit. Constructed of 16 gauge steel.

Height 1.75" (44.5mm), Width 19" (483mm), Depth 12" (303mm)
Number of Rack Spaces Utilized: 1

Rack Mount GB372

Graybar ID# 25275436

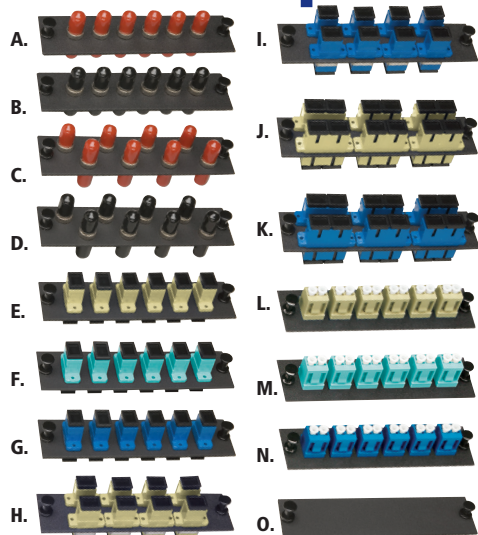
Will accept 3 panels, 6 or 8 port. Comes with mounting hardware, internal cable management and labels for accurate cable administration. Equipped with sliding tray. Includes cable management kit. Constructed of 16 gauge steel.

Height 1.75" (44.5mm), Width 19" (483mm), Depth 12" (303mm)
Number of Rack Spaces Utilized: 3

All enclosures will accept 6 or 8 port fiber panels. Fiber panels are sold separately.



Fiber Optic Panels



Part Number	Description	Graybar ID #
A. GBST-6MM	Loaded Mounting Panel MM-ST 6 Pack	25077895
B. GBST-6SM	Loaded Mounting Panel SM-ST 6 Pack	25077896
C. GBST-8MM	Loaded Mounting Panel MM-ST 8 Pack	25077897
D. GBST-8SM	Loaded Mounting Panel SM-ST 8 Pack	25077898
E. GBSC-6MM	Loaded Mounting Panel MM-SC 6 Pack	25077889
F. GBSC-6MM-AQUA	Loaded Mounting Panel, MM-SC AQUA, 6 Pack	25871849
G. GBSC-6SM	Loaded Mounting Panel SM-SC 6 Pack	25077890
H. GBSC-8MM	Loaded Mounting Panel MM-SC 8 Pack	25077891
I. GBSC-8SM	Loaded Mounting Panel SM-SC 8 Pack	25077892
J. GBSC-6MMDU	Loaded Duplex Mounting Panel MM-SC 6 Pack	25077893
K. GBSC-6SMDU	Loaded Duplex Mounting Panel SM-SC 6 Pack	25077894
L. GBLC-6MMDU	Loaded Duplex Mounting Panel MM-LC 6 Pack	25077902
M. GBLC-6MMDU-AQUA	Loaded Duplex Mounted Panel, MM-LC AQUA, 6 Pack	25871850
N. GBLC-6SMDU	Loaded Duplex Mounting Panel SM-LC 6 Pack	25077888
O. GBF-BP	Blank Metal Filler Panel, fits all panel openings	25077899

• Every fiber coupler includes an individual dust cover.

Quality, Standards-Based Solutions

Installers of communication networks have discovered many benefits of fiber systems, not only in carrier deployment, LAN backbones and industrial networks, but also telephones and cell phones, CATV security cameras etc. Optical fiber is often the most cost-effective means of transporting high bandwidth information.

- **Bandwidth:** Fiber links offer more than 1,000 times more bandwidth than copper.
- **Distance & Performance:** Versus UTP, fiber can often support links of up to 300 meters, error-free, even at high data rates.
- **Security:** Government applications have long required optical fiber because it is more difficult to tap than copper. In addition, electromagnetic interference (EMI) over copper may be a problem for industrial networks utilizing motors, relays, welders, fluorescent lighting, etc.
- **Longevity:** Superior bandwidth does not require frequent upgrades to fiber networks. Also, fiber runs have little risk of being damaged by harsh elements such as water, chemicals, heat and corrosion.
- **Cost:** Fiber is often easier to install than UTP. Optical electronic costs have dropped significantly, and because fiber links support longer distances, centralized fiber LANs allow placement of electronics in one location in or near the computer room. The telecom closet only requires passive fiber connections, so no power, UPS or air-conditioning is needed.

Reducing Costs - Increasing Opportunities

More than 350 large, medium and small fiber-optic network service providers across North America have seen an average operational expenditure (opex) savings of more than 20% annually—reducing their maintenance costs and strengthening their opportunities to expand their subscriber base with more services.

100 Percent Testing on Hundreds of Configurations

Allen Tel's fiber connectivity solutions include hundreds of jumper configurations, fan-out assemblies (100 percent tested), wall and rack mount cabinets, adapter modules and work-station outlets. Quick turnaround of custom assemblies is regularly available.

Graybar ESP | 43

Allen Tel Fiber Optic Connectivity

Efficiency + Productivity = Lowest Cost

by Melvin J. Owens, RCDD, Director of Engineering, Allen Tel Products



The weakest link in an optical fiber network is often a minimally compliant jumper. Allen Tel tests 100% of our jumpers and ships them with dust covers – because you cannot afford costly downtime and trouble shooting. With the simple installation practice of ensuring that the connector ends remain clean or are cleaned properly whenever signal loss is detected, Allen Tel fiber connectivity provides the most cost-effective installation for you and your customers.

Installers of communication networks have discovered many benefits of optical fiber systems. Fiber is utilized everywhere and supports not only LAN backbones and industrial networks, but also telephones and cell phones, CATV, security cameras, etc. Optical fiber is often the most cost-effective means of transporting high-bandwidth information.

- **Bandwidth:** Fiber links offer more than 1,000 times more bandwidth than copper.
- **Distance and performance:** Unshielded twisted pair (UTP) cabling standards (EIA/TIA 568) call for 90 meters (295 feet) of permanently installed copper cable and 10 meters (33 feet) of patch cords. Fiber can often support links of up to 300 meters, error-free, even at high data rates.
- **Security:** An increasing need for security drives more demand for fiber. Government applications have long required optical fiber because it is more difficult to tap than copper. In addition, electromagnetic interference (EMI) over copper may be a problem for industrial networks utilizing motors, relays, welders, fluorescent lighting, etc.
- **Safety:** Optical fiber does not conduct electricity and is immune to lightning and current surges

which can damage sensitive equipment or pose threats of electrocution, fire or sparking.

- **Longevity:** Superior bandwidth does not require frequent upgrades to fiber networks. Also, fiber runs have little risk of being damaged by harsh elements, such as water, chemicals, heat and corrosion.
- **Cost:** Fiber is often easier to install than UTP, which is often subject to more stringent and time-consuming installation practices for cable-pulling and termination. Also, fiber installations are largely impacted by electronics costs which have dropped significantly over the past 10 years. Because fiber links support longer distances, centralized fiber LANs allow placement of all electronics in one location in or near the computer room. The telecom closet only requires passive fiber connection, so no power, UPS or air-conditioning is needed.

Allen Tel's fiber connectivity solution includes hundreds of jumper configurations, wall- and rack-mount cabinets, adapter modules and work-station outlets. Allen Tel meets the demands of your enterprise networks – today and tomorrow!

Contact Graybar for additional information, inventory, training and cost analyses.



Allen Tel's fiber connectivity solution includes hundreds of jumper configurations, wall- and rack-mount cabinets, adapter modules and work-station outlets.



Reprinted with permission from © 2000 Graybar ESP Publications. All rights reserved.
For more information contact Allen Tel Products, Inc. or your Graybar Representative.





Graybar ESP

Allen Tel meets the demands of your networks — today and tomorrow!



ALLEN TEL PRODUCTS
THE PROFESSIONAL'S CHOICE

30 TV5 Drive, Henderson, Nevada 89014
Phone: 702-855-5700 Fax: 702-855-5775
allentel.com

Distributed by

GraybaR
works to your advantage