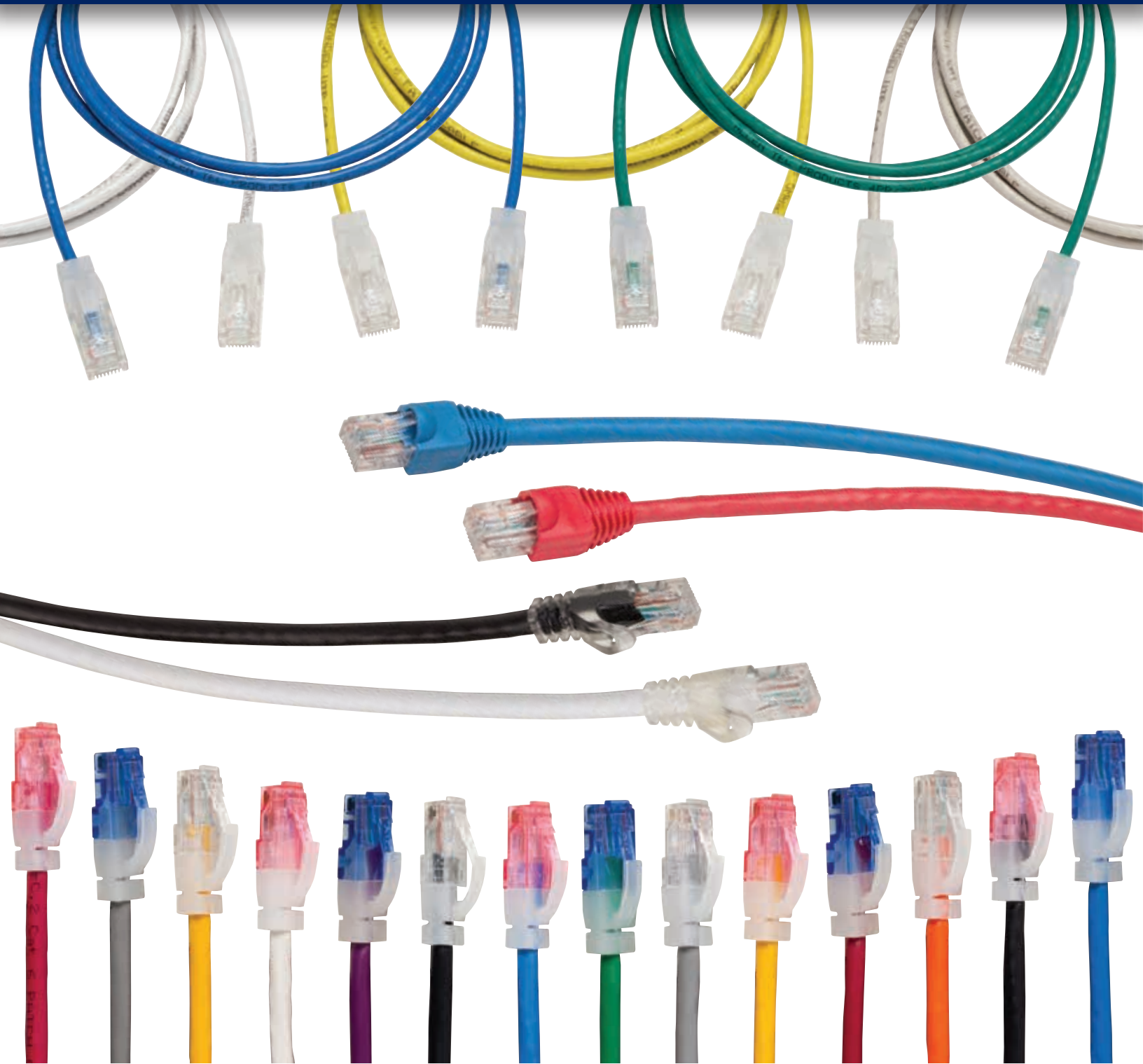




Patch Cords

Now Including Our Line of BLFCO Cords



Category 5e and 6 BLFCO Cords

- Meet the TIA/EIA-68-B.2-1 Category 5e/6 standards
- Available in a wide variety of lengths and colors
- ANSI/TIA-568-C.2
- ANSI/TIA-1096-A (formerly FCC Part 68)
- CSA & UL Listed
- ISO/IEC 11801
- UL 444 CM Rated
- Available in booted and snagless configurations
- Supports limited PoE applications
- RoHS Compliant



Booted Cords

Part Number	Part Description	Std. Pkg. Qty.	Std. Ctn. Qty.
BL501E-XX	Cat 5e Patch Cord 1ft	25	350
BL502E-XX	Cat 5e Patch Cord 2ft	25	250
BL503E-XX	Cat 5e Patch Cord 3ft	25	200
BL504E-XX	Cat 5e Patch Cord 4ft	25	175
BL505E-XX	Cat 5e Patch Cord 5ft	25	150
BL507E-XX	Cat 5e Patch Cord 7ft	25	125
BL510E-XX	Cat 5e Patch Cord 10ft	25	125
BL514E-XX	Cat 5e Patch Cord 14ft	25	75
BL515E-XX	Cat 5e Patch Cord 15ft	25	75
BL518E-XX	Cat 5e Patch Cord 18ft	1	65
BL520E-XX	Cat 5e Patch Cord 20ft	1	65
BL525E-XX	Cat 5e Patch Cord 25ft	1	60
BL550E-XX	Cat 5e Patch Cord 50ft	1	28
BL5100E-XX	Cat 5e Patch Cord 100ft	1	15
BL601-XX	Cat 6 Patch Cord 1ft	25	350
BL602-XX	Cat 6 Patch Cord 2ft	25	250
BL603-XX	Cat 6 Patch Cord 3ft	25	200
BL604-XX	Cat 6 Patch Cord 4ft	25	175
BL605-XX	Cat 6 Patch Cord 5ft	25	150
BL607-XX	Cat 6 Patch Cord 7ft	25	125
BL610-XX	Cat 6 Patch Cord 10ft	25	125
BL614-XX	Cat 6 Patch Cord 14ft	25	75
BL615-XX	Cat 6 Patch Cord 15ft	25	75
BL618-XX	Cat 6 Patch Cord 18ft	1	65
BL620-XX	Cat 6 Patch Cord 20ft	1	65
BL625-XX	Cat 6 Patch Cord 25ft	1	60
BL650-XX	Cat 6 Patch Cord 50ft	1	28
BL6100-XX	Cat 6 Patch Cord 100ft	1	15

XX Colors: WH-White; YL-Yellow; BU-Blue; RD-Red; GY-Grey; I-Ivory;
BK-Black; GN-Green; OR-Orange; P-Purple

Molded Boot Cords

Part Number	Part Description	Std. Pkg. Qty.	Std. Ctn. Qty.
BL501E-XX-MB	Cat 5e Cord Molded Boot 1ft	25	350
BL502E-XX-MB	Cat 5e Cord Molded Boot 2ft	25	250
BL503E-XX-MB	Cat 5e Cord Molded Boot 3ft	25	200
BL504E-XX-MB	Cat 5e Cord Molded Boot 4ft	25	175
BL505E-XX-MB	Cat 5e Cord Molded Boot 5ft	25	150
BL507E-XX-MB	Cat 5e Cord Molded Boot 7ft	25	125
BL510E-XX-MB	Cat 5e Cord Molded Boot 10ft	25	125
BL514E-XX-MB	Cat 5e Cord Molded Boot 14ft	25	75
BL515E-XX-MB	Cat 5e Cord Molded Boot 15ft	25	75
BL518E-XX-MB	Cat 5e Cord Molded Boot 18ft	1	65
BL520E-XX-MB	Cat 5e Cord Molded Boot 20ft	1	65
BL525E-XX-MB	Cat 5e Cord Molded Boot 25ft	1	60
BL550E-XX-MB	Cat 5e Cord Molded Boot 50ft	1	28
BL5100E-XX-MB	Cat 5e Cord Molded Boot 100ft	1	15
BL601-XX-MB	Cat 6 Molded Boot 1ft	25	350
BL602-XX-MB	Cat 6 Molded Boot 2ft	25	250
BL603-XX-MB	Cat 6 Molded Boot 3ft	25	200
BL604-XX-MB	Cat 6 Molded Boot 4ft	25	175
BL605-XX-MB	Cat 6 Molded Boot 5ft	25	150
BL607-XX-MB	Cat 6 Molded Boot 7ft	25	125
BL610-XX-MB	Cat 6 Molded Boot 10ft	25	125
BL614-XX-MB	Cat 6 Molded Boot 14ft	25	75
BL615-XX-MB	Cat 6 Molded Boot 15ft	25	75
BL618-XX-MB	Cat 6 Molded Boot 18ft	1	65
BL620-XX-MB	Cat 6 Molded Boot 20ft	1	65
BL625-XX-MB	Cat 6 Molded Boot 25ft	1	60
BL650-XX-MB	Cat 6 Molded Boot 50ft	1	28
BL6100-XX-MB	Cat 6 Molded Boot 100ft	1	15

XX Colors: WH-White; YL-Yellow; BU-Blue; RD-Red; GY-Grey; I-Ivory;
BK-Black; GN-Green; OR-Orange; P-Purple

Allen Tel's Compliant Patch Cords

ATP
Cords

BLFCO
Cords



- Exceed the TIA/EIA-68-B.2-1 Category 5e/6/6A standards



- Meet the TIA/EIA-68-B.2-1 Category 5e/6 standards



- Independently tested and verified by NRTL (ETL)



- Verified to meet and exceed 100-meter channel performance by third party and in-house testing



- Provides superior performance and headroom in the channel



- Snagless, integrated strain-relief plug design provides secure connection while maintaining a low profile and easier access to plug release tab



- Available in a wide variety of lengths and colors



- ANSI/TIA-568-C.2



- ANSI/TIA-1096-A (formerly FCC Part 68)



- CSA & UL Listed



- ISO/IEC 11801



- RoHS



- UL 444 CM Rated



- IEEE 802.3at (Type 1) PoE up to 15.4 watts



- IEEE 802.3at (Type 2) PoE+ up to 30 watts



- IEEE Draft 802.3bt (Type 3) PoE+ up to 60 watts



- IEEE Draft 802.3bt (Type 4) PoE+ up to 100 watts (maximum bundle size of 100 cords)



- Cisco Universal Power Over Ethernet (UPOE) up to 60 watts



- Power over HDBaseTTM (POH) up to 100 watts (maximum bundle size of 100 cords)



- Available in booted and snagless boot configurations

* Supports **limited** PoE applications

Category 6A 10Gb Patch Cords



- Designed to exceed TIA/EIA-568-B.2-10 Category 6A standard
- 100% Tested and approved for Category 6A channel compliance
- Custom colors and lengths available upon request
- Snagless
- Variety of colors
- 500 MHz

Part Number	Part Description	Std. Pkg. Qty.	Std. Ctn. Qty.
ATG1001-XX	Cat6A 10GB Patch Cord 1ft	25	400
ATG1002-XX	Cat6A 10GB Patch Cord 2ft	25	300
ATG1003-XX	Cat6A 10GB Patch Cord 3ft	25	200
ATG1004-XX	Cat6A 10GB Patch Cord 4ft	25	175
ATG1005-XX	Cat6A 10GB Patch Cord 5ft	25	175
ATG1007-XX	Cat6A 10GB Patch Cord 7ft	25	150
ATG1010-XX	Cat6A 10GB Patch Cord 10ft	25	100
ATG1014-XX	Cat6A 10GB Patch Cord 14ft	25	75
ATG1015-XX	Cat6A 10GB Patch Cord 15ft	1	75
ATG1018-XX	Cat6A 10GB Patch Cord 18ft	1	60
ATG1020-XX	Cat6A 10GB Patch Cord 20ft	1	50
ATG1025-XX	Cat6A 10GB Patch Cord 25ft	1	40
ATG1050-XX	Cat6A 10GB Patch Cord 50ft	1	20
ATG10100-XX	Cat6A 10GB Patch Cord 100ft	1	10

XX Colors: WH-White, YL-Yellow, BU-Blue, RD-Red, GY-Grey, I-Ivory, BK-Black, GN-Green, OR-Orange, P-Purple

Category 6 Patch Cords



- Designed to Exceeds TIA/EIA-68-B.2-1 Category 6 standard
- 100% tested and approved for Category 6 channel compliance
- Custom colors and lengths available upon request
- Snagless
- 350 MHz

Part Number	Part Description	Std. Pkg. Qty.	Std. Ctn. Qty.
AT1601-XX	Cat6 Patch Cord 1ft	25	400
AT1602-XX	Cat6 Patch Cord 2ft	25	300
AT1603-XX	Cat6 Patch Cord 3ft	25	200
AT1604-XX	Cat6 Patch Cord 4ft	25	175
AT1605-XX	Cat6 Patch Cord 5ft	25	175
AT1607-XX	Cat6 Patch Cord 7ft	25	150
AT1610-XX	Cat6 Patch Cord 10ft	25	100
AT1614-XX	Cat6 Patch Cord 14ft	25	75
AT1615-XX	Cat6 Patch Cord 15ft	1	75
AT1618-XX	Cat6 Patch Cord 18ft	1	60
AT1620-XX	Cat6 Patch Cord 20ft	1	50
AT1625-XX	Cat6 Patch Cord 25ft	1	40
AT1650-XX	Cat6 Patch Cord 50ft	1	20
AT16100-XX	Cat6 Patch Cord 100ft	1	10

XX Colors: WH-White, YL-Yellow, BU-Blue, RD-Red, GY-Grey, I-Ivory, BK-Black, GN-Green, OR-Orange, P-Purple

Category 5e Patch Cords

- Exceeds TIA/EIA Category 5e standard (Wired 568B)
- 100% tested and approved for Category 5e channel compliance
- Custom colors and lengths available upon request
- Snagless
- Variety of colors
- 155 MHz



Part Number	Part Description	Std. Pkg. Qty.	Std. Ctn. Qty.
AT1501EV-XX	Cat5e Patch Cord 1ft	25	500
AT1502EV-XX	Cat5e Patch Cord 2 ft	25	400
AT1503EV-XX	Cat5e Patch Cord 3 ft	25	300
AT1504EV-XX	Cat5e Patch Cord 4 ft	25	300
AT1505EV-XX	Cat5e Patch Cord 5 ft	25	250
AT1507EV-XX	Cat5e Patch Cord 7 ft	25	200
AT1510EV-XX	Cat5e Patch Cord 10 ft	25	150
AT1514EV-XX	Cat5e Patch Cord 14 ft	25	100
AT1515EV-XX	Cat5e Patch Cord 15 ft	1	100
AT1518EV-XX	Cat5e Patch Cord 18 ft	1	80
AT1520EV-XX	Cat5e Patch Cord 20 ft	1	70
AT1525EV-XX	Cat5e Patch Cord 25 ft	1	65
AT1550EV-XX	Cat5e Patch Cord 50 ft	1	30
AT15100EV-XX	Cat5e Patch Cord 100 ft	1	15

XX Colors: WH-White, YL-Yellow, BU-Blue, RD-Red, GY-Grey, I-Ivory, BK-Black, GN-Green, OR-Orange, P-Purple

Category 6 Slim Patch Cords



- These 28 AWG cords (approx. 0.14 diameter) offer smaller cable fill and bend-radius flexibility
- Custom colors and lengths available upon request
- Some limitations apply

Part Number	Part Description	Std. Pkg. Qty.	Std. Ctn. Qty.
AT1601-XX-SLIM	Cat 6 Slim Patch Cord 1 ft.	25	500
AT1602-XX-SLIM	Cat 6 Slim Patch Cord 2 ft.	25	400
AT1603-XX-SLIM	Cat 6 Slim Patch Cord 3 ft.	25	350
AT1605-XX-SLIM	Cat 6 Slim Patch Cord 5 ft.	25	175
AT1607-XX-SLIM	Cat 6 Slim Patch Cord 7 ft.	25	150
AT1610-XX-SLIM	Cat 6 Slim Patch Cord 10 ft.	25	100
AT1615-XX-SLIM	Cat 6 Slim Patch Cord 15 ft.	1	75
AT1620-XX-SLIM	Cat 6 Slim Patch Cord 20 ft.	1	50

XX Colors: WH-White, YL-Yellow, BU-Blue, GY-Grey, GN-Green,

Quality, Standards-Based Solutions Include Fiber Optic Jumpers

Installers of communication networks have discovered many benefits of fiber systems, not only in carrier deployment, LAN backbones and industrial networks, but also telephones and cell phones, CATV security cameras etc. Optical fiber is often the most cost-effective means of transporting high bandwidth information.

- **Bandwidth:** Fiber links offer more than 1,000 times more bandwidth than copper.
- **Distance & Performance:** Versus UTP, fiber can often support links of up to 300 meters, error-free, even at high data rates.
- **Security:** Government applications have long required optical fiber because it is more difficult to tap than copper. In addition, electromagnetic interference (EMI) over copper may be a problem for industrial networks utilizing motors, relays, welders, fluorescent lighting, etc.
- **Longevity:** Superior bandwidth does not require frequent upgrades to fiber networks. Also, fiber runs have little risk of being damaged by harsh elements such as water, chemicals, heat and corrosion.
- **Cost:** Fiber is often easier to install than UTP. Optical electronic costs have dropped significantly, and because fiber links support longer distances, centralized fiber LANs allow placement of electronics in one location in or near the computer room. The telecom closet only requires passive fiber connections, so no power, UPS or air-conditioning is needed.

Reducing Costs - Increasing Opportunities

More than 350 large, medium and small fiber-optic network service providers across North America have seen an average operational expenditure (opex) savings of more than 20% annually—reducing their maintenance costs and strengthening their opportunities to expand their subscriber base with more services.

100 Percent Testing on Hundreds of Configurations

Allen Tel's fiber connectivity solutions include hundreds of jumper configurations, fan-out assemblies (100 percent tested), wall and rack mount cabinets, adapter modules and work-station outlets. Quick turnaround of custom assemblies is regularly available.

Cable

Allen Tel
Patch Cards and Jumper Cables Exceed Standards, Lower Costs and Improve Productivity

GraybaR
Network Cable Solutions

Allen Tel
SEAT, TEL
TOOL AN

GraybaR
works to

Available in 10 colors, compatible terminations and ATP. Allen Tel faceplate boxes. Customized interconnects. Of custom popular

Copper and Fiber Cable Assemblies
Network contractors, installers and end users, did you know:

- Labor costs can average as high as \$750 to \$1,200 for a single move-add-change. (Cabling Business Magazine, February 2008)
- Network cabling and connectors account for 8 percent of downtime, resulting in an inestimable cost in lost business and productivity. (Cabling Business Magazine, August 2009)
- In 2010, testing continued to show a critically high percentage of patch cord failures. (Communications Cable and Connectivity Association)

Don't base your critical network performance on the least-cost components — frequently the weakest link in a copper or fiber optic network. Count on Allen Tel and GraybaR for fully compliant Copper and Fiber cable assemblies that add up to the **Performance Equation: Efficiency + Productivity = Lower Cost.** Our Copper Patch Cards, Fiber Jumpers and Custom Cable Assemblies make the difference for contractors whose reputation and profitability depend on installation performance and for end users like hospitals, police, fire, air-traffic control, security, finance and manufacturers who demand network reliability.

Patch cords, fiber jumpers and custom cable assemblies are regularly tested in-house and at nationally recognized test labs (NRTL) to assure performance. Designed and manufactured to exceed the most stringent standards, it's no wonder Allen Tel's fully compliant Cat6, Cat 6 and Cat 6A copper patch cords and fiber jumpers are considered "the professional's choice." Find out more from your GraybaR representative.

Allen Tel test lab and R&D center.

Profitability Solutions 1-800-GRAYBAR graybar.com

GraybaR ESP

Electric Ivory

Grey Orange Blue Red

GraybaR

65 YEARS

GraybaR SINCE 1952

GraybaR

**Allen Tel meets the demands
of your networks —
today and tomorrow!**



ALLEN TEL PRODUCTS
THE PROFESSIONAL'S CHOICE

30 TV5 Drive, Henderson, Nevada 89014
Phone: 702-855-5700 Fax: 702-855-5775
allentel.com

Distributed by

GraybaR
works to your advantage