



MORE INFORMATION

Visitor Information Centre
301 Victoria Road West
250.837.5345 | 1.800.487.1493

Revy Riders Dirt Bike Club
www.RevyRiders.ca | revyriders@gmail.com

Emergency: 911
Parks & Recreation: 250.837.9351
BC Ministry of Forests: 250.837.7611

REVELSTOKE.

SeeRevelstoke.com @SeeRevelstoke #THEREALSTOKE

The Revy Riders Dirtbike Club's trail system and tracks are located just 10 kms north of downtown Revelstoke on Westside Road. They are operated by the Revy Riders Dirtbike Club in partnership with Recreation Sites and Trails BC.

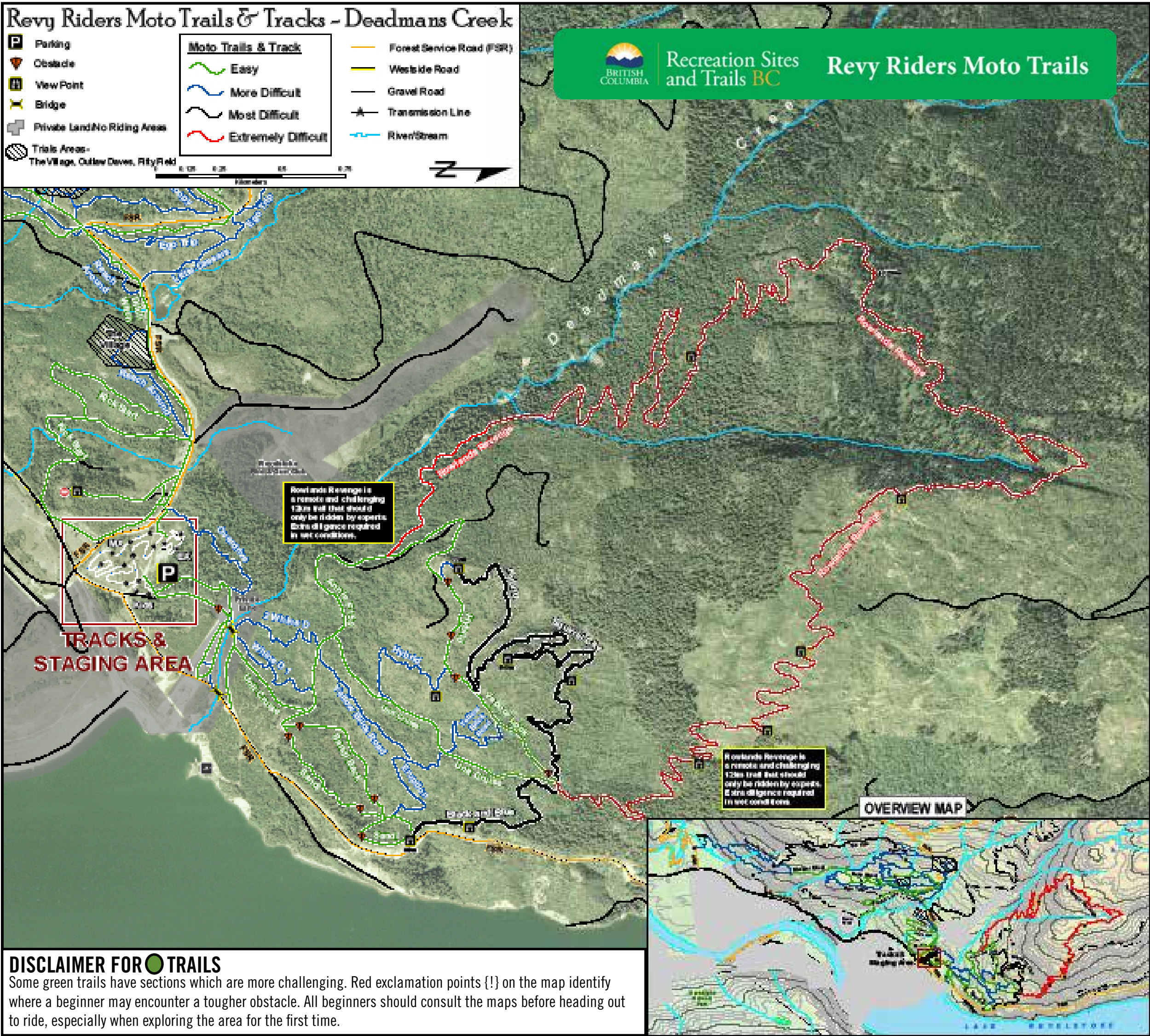
There are two main riding areas with over 75 kms of incredible dirt bike trails and tracks: the Deadman's Creek Trails (below) and Lower Frisby Trails (turn over). Before you ride please consult the Information Kiosk in the staging area and deposit the daily trail / track pass fee.

DEADMAN'S CREEK TRAILS

The Deadman's Creek Trails are located just north of the Lower Frisby Trails, tracks, and staging areas. These trails can be accessed via the white bridge visible from Overdrive Intersection north of the skills area.

Access:

- Head West on Highway 1.
- Turn right on Westside Road (Hwy 23 South intersection).
- Follow the Revy Riders Moto Trails & Track signage on Westside Road for 10 kms.
- Pass Glacier House Resort and at the end of the pavement you will see the motocross track from the road.
- The Deadman's Creek Trails are located just North of the Lower Frisby Trails, tracks, and staging areas.



DISCLAIMER FOR TRAILS

Some green trails have sections which are more challenging. Red exclamation points (!) on the map identify where a beginner may encounter a tougher obstacle. All beginners should consult the maps before heading out to ride, especially when exploring the area for the first time.

REVEY RIDERS MOTO TRAILS

TRAIL RATING

● Easy ■ More Difficult ◆ Most Difficult ♦ Extremely Difficult

TRAIL	RATING
Annie F150	Easy
Sandi	Easy
Sandi Back	Easy
Unit Cruise	Easy
Vapour Lock	Easy
2 Whine D	More Difficult
Eruption	More Difficult
Whine D 1	More Difficult
Yellow Brick Road	More Difficult
Black and Blue	Most Difficult
Squirrel City	Most Difficult
Hybrid	Easy/More Difficult/Most Difficult
Rowlands Revenge	Extremely Difficult

TRAIL ETIQUETTE

1. Be aware of two-way traffic and the possibility of animals at all times.
2. Ride in control at all times. Maintain a safe speed and distance from riders to ensure you avoid collisions.
3. Club membership or a \$10 day pass is mandatory to ride trails.
4. There is no riding permitted on the Frisby Ridge alpine mountain bike trail, or anywhere on BC Hydro property (across Westside Rd) near the dam.
5. Consult the Information Kiosk prior to riding. Red exclamation points on the map are features or obstacles requiring a higher level of skill.
6. Never ride alone.
7. Respect the trails and only ride within your ability. If you are stuck or feel you are over your head, turn around. Spinning out destroys the trail.
8. Be sensitive to wet areas and do not ride in heavy rain. Avoid heavy throttle or any type of riding that could damage the soft ground.
9. Please stay on the trails to avoid harming vegetation
10. Off-Road Vehicles (ORV's) must be registered and display a plate or decal showing proper identification for operation on Crown Land including Forest Service Roads (FSR's). Exempt are ORV's designed to be operated by a child 11 years of age or younger. Proof of driver's license and insurance is required to use or cross FSR's.

DAY FEES

To ride the trails and tracks you must be a member or **pay for a \$10 day pass**. You can purchase your day pass or membership at Infinite Powersports, Rough Country Marine, and Glacier House Resort or deposit a signed waiver and fee into the lock box provided.

RATES

Day Pass: \$10 per person

Kids (six years and under): FREE

Annual Membership
Adults: \$120.00

Kids: \$50.00

Family (4 or more): \$300

DID YOU ENJOY YOUR RIDE?

The Revy Riders Dirtbike Club strongly depends on your support to maintain and build the trails. All fees go directly towards maintenance and further development. If you enjoy riding the area, please make a donation in the lock box provided at the Information Kiosk.

For more information:
www.RevyRiders.ca
revyriders@gmail.com



REVELSTOKE'S BIKE SHOP
PARTS & SERVICE - ALL MAKES & MODELS
SHERCO
64 WESTSIDE RD 250.837.2027



KEVIN & KRISTIE RADUENZ
Owners
250.837.6738 | roughcountry@telus.net
210-2nd Street West, Revelstoke, BC
WWW.ROUGH-COUNTRY.CA



REVEY.



The Revy Riders Dirtbike Club acknowledges the generous support of:



LOWER FRISBY TRAILS

The original Lower Frisby Trails are located just above our tracks and staging areas. These trails have some FSR's that you must have proper documentation to ride. When riding the Lower Frisby Trails, please do not ride the mountain bike trails. The Lower Frisby Trails are pictured to the right.

Access:
-Head West on Highway 1.
-Turn right on Westside Road (Hwy 23 South intersection).
-Follow the Revy Riders Moto Trails and Track signage on Westside Road for 10 kms.
-Pass Glacier House Resort and at the end of the pavement you will see the motocross track from the road.
-Tracks and Lower Frisby Trails are located 10kms from the Hwy 1 turn off.

TRAIL RATING

● Easy ■ More Difficult ◆ Most Difficult

TRAIL	RATING
Ditch Witch	Easy
Easy Street	Easy
Glacier Lane	Easy
Kick Start	Easy
Overdrive	Easy
Streeter Street	Easy
Alder Alley	More Difficult
Ego Trip	More Difficult
Gibby	More Difficult
Little Caesars	More Difficult
Loopy	More Difficult
Reach Around	More Difficult
Short Shot	More Difficult
Smooth Operator	More Difficult
Uno	More Difficult
Waterslide	More Difficult
The Klim	Most Difficult



MOTO TRACKS

BEGINNER AND KIDS TRACK

A perfect place to start. Whether you're an expert or this is your first time, the Beginner and Kids Track is confidence building and tons of fun to ride.

SKILLS PROGRESSION AREA

The Skills Progression Area was recently added to help improve your skills. With multiple lines for progression this area will allow you to gauge your ability level and give you an idea of what to expect on different trails.

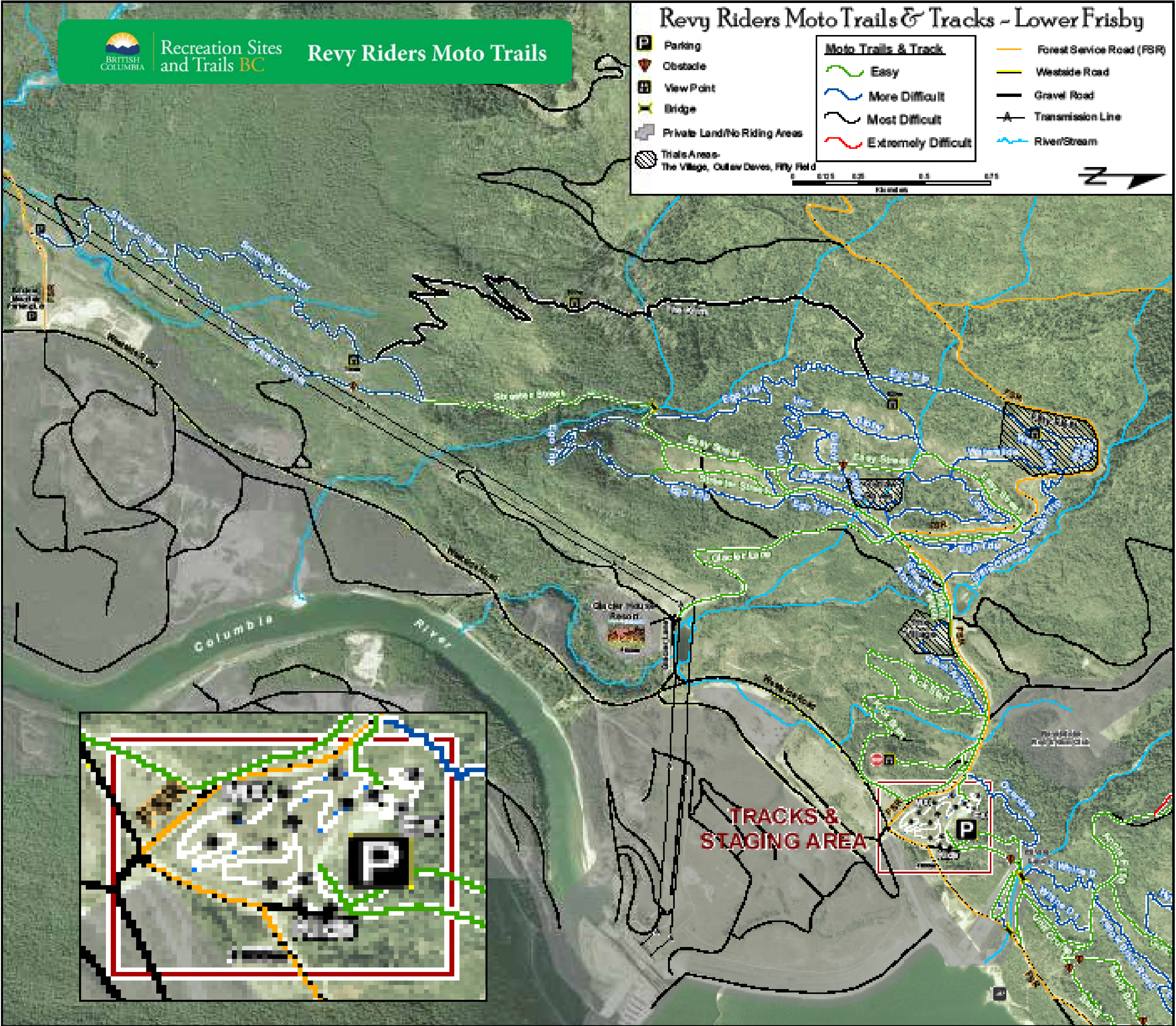
MOTOCROSS TRACK

The Motocross Track was built with fun and safety in mind. Our full-size track offers large sandy berms connecting to table tops with multiple lines throughout the track. Please always ride a "site lap" before you ride the track with speed.

ENDUROCROSS TRACK

The Endurocross Track has a variety of obstacles including a log matrix, tire jumps, firewood pit and other challenges. Designed to develop and test skills that transition to Enduro riding. Accessible via Kick Start.

Tracks open 10am - 8pm daily.
All mufflers must be 96db or less.



TRACK RATING

● Easy ■ More Difficult ◆ Most Difficult

TRACK	RATING
Skills Progression Area	Easy
Beginner & Kids	Easy
Motocross (MX)	More Difficult
Endurocross (EX)	Most Difficult

TRACK ETIQUETTE

1. 1st gear only in pit area: no accelerating or wheelies. Safety is our #1 priority!
2. 96db maximum sound level: Loud bikes will be tested. Violators must repair or replace mufflers to comply.
3. Club membership or \$10 day pass is mandatory to ride tracks.
4. You are in bear country, please haul out your garbage.
5. All riders must have appropriate safety apparel, and bikes must be in proper working condition.
6. Minors (16 and under) require adult supervision.
7. This is a family facility: please use common sense.
8. All dogs must be tied up or on a leash at all times, no exceptions.

DAY FEES

To ride these trails or tracks you must be a member or **pay a day fee of \$10 per person.**

You can purchase your day pass or membership at Infinite Powersports, Rough Country Marine, and Glacier House Resort or deposit a signed waiver and fee into the lock box provided.



RATES

Day Pass: \$10 per person

Kids (six years and under): FREE

Annual Membership
Adults: \$120.00

Kids: \$50.00

Family (4 or more): \$300