

# CloudRiskGraph(™)

Insure Your Tech Cloud

The pioneering AI driven Cloud Risk data product

Analysis for Cloud Risk Outage Insurance solutions





# INFORMATION SOLUTIONS FOR INSURANCE RISK IN CLOUD TECH MEASURE WITH GEN.AI

What de do?

- We reduce your Technology Cloud.Risk
- The pioneering **CloudRisk.Graph<sup>(TM)</sup>** mitigates your technology risk

Try a free Cloud.Risk Simulation

Book an Appointment

# CloudRisk.Graph

A data product

- An API data product - annual license model

Automated Risk Measurement for Cloud Risk technologies

- Calculates - Technology Risks - gives a rating **0-999**
- Informational data points: Cloud Outage , DDoS attacks, services reliability.

All your technologies evaluated in one single place. Tier One Cloud Vendors, CDNs , connected by our CloudRiskGraph(™) technology.

- **b2C** - Direct to Consumer - ( Direct to end user customer transparent analysis)
  - API driven insights
- **b2B** - Underwriters - Insurance policies - **b2B** ( for Insurance companies)
  - API driven Insights , Service API - 360° view



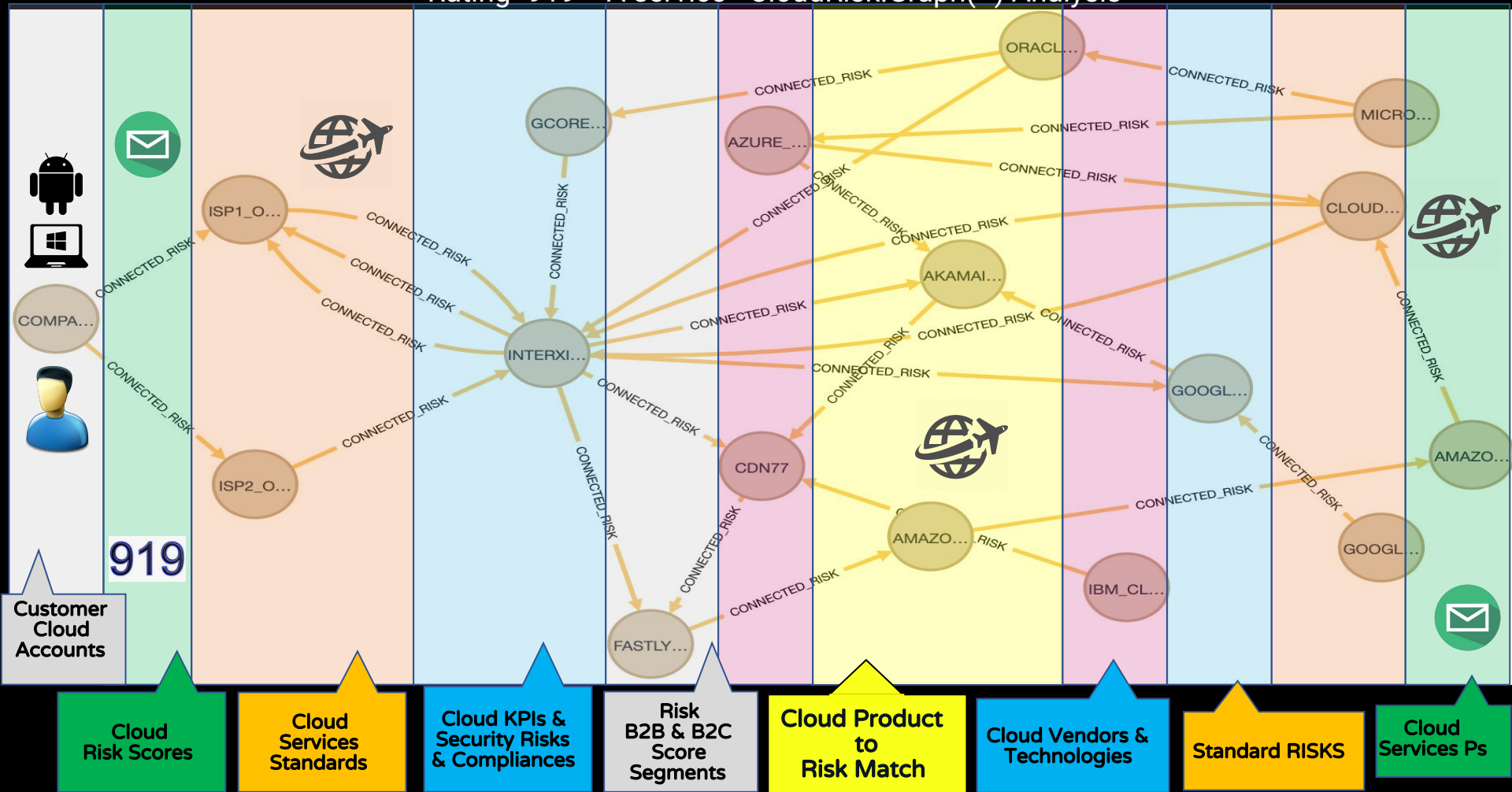
# Understand **Cloud Risks** through their whole Tech.Cloud usage journey

Tech.cloud risk ratio 0-999

Cloud DDoS	APPLICATION RISK	Standard Analysis	Services Analysis
Services at DDoS Risk	Platform Agnostic checks: Authentication, Email, User Types, User Databases. All App analysis graph linked.	A standard framework capable to cross-compare different vendors of cloud	Connect Services and Interactions with User Insights. Leverage Unique Data Platform in the Cloud Engineering World.
PERSONALISE EXPERIENCE	Global Risk Analysis	B. I. INSIGHTS	UNDERSTANDING Use Cases
Insights API allows tailored properties to calculate risk B2C personalise	Anonymized Data used to enhance the Cloud Risk Calculation Engine.	Explore Relationships in Graph discover risk insights	Risk insights & Service grouping



# Rating=919 - A service - CloudRisk.Graph(™) Analysis



Cloud Risk-Simulation - B2C - Customer Submission Portal

Compare cloud services between multiple cloud vendors

Use our Premium or Freemium API submissions

Clear Submission

Save Submission

Load Last Submission

1.Cloud.Risk  
Cloud Provider

Amazon AWS

Service

Amazon Elastic Kubernetes Service (E

Region

global

Service monthly  
cost estimate  
(\$)

1000

2.Cloud.Risk  
Cloud Provider

Microsoft Azure

Service

Azure Kubernetes Service (AKS)

Region

global

Service monthly  
cost estimate  
(\$)

1000

3.Cloud.Risk  
Cloud Provider

Google Cloud GCP

Service

Select a service

Region

global

Service monthly  
cost estimate  
(\$)

1000

- Google SecOps (Chronicle Security)
- Recommendation AI
- Google Cloud Marketplace
- Google Cloud Load Balancing
- Google Cloud And Media CDN
- Google Cloud DNS
- Google Kubernetes Engine (GKE)
- IBM Watson Platform
- IBM Dedicated Storage Instance
- IBM Data Engine (previously SQL Query)
- IBM Data Product Hub
- IBM Databases
- IBM Databases for DataStax
- IBM Databases for EDB
- IBM Databases for Elasticsearch
- IBM Databases for etcd
- IBM Databases for MongoDB
- IBM Databases for MySQL
- IBM Databases for PostgreSQL
- IBM Databases for Redis
- IBM DataStage
- IBM Db2
- IBM Db2 Warehouse
- IBM watsonx BI Assistant
- IBM Managed Dedicated Storage Instance
- IBM Functions

Outage Information

Cloud.Risk uses webscrappers and GenAI to get outage information from th

The CloudRisk.Simulation Freemium tier is limited to Information from Janu

Consider Upgrading to Premium for more accurate information

Cloud Risk-Simulation - B2C - Customer Submission Portal

Compare cloud services between multiple cloud vendors

Use our Premium or Freemium API submissions

Clear Submission Save Submission Load Last Submission

1.Cloud\_Risk  
Cloud Provider

Amazon AWS

Service

Amazon Elastic Kubernetes Service (EKS)

Region

global

Service monthly  
cost estimate  
(\$)

1000

2.Cloud\_Risk  
Cloud Provider

Microsoft Azure

Service

Azure Kubernetes Service (AKS)

Region

global

Service monthly  
cost estimate  
(\$)

1000

3.Cloud\_Risk  
Cloud Provider

Google Cloud GCP

Service

Google Kubernetes Engine (GKE)

Region

global

Service monthly  
cost estimate  
(\$)

1000

+

-

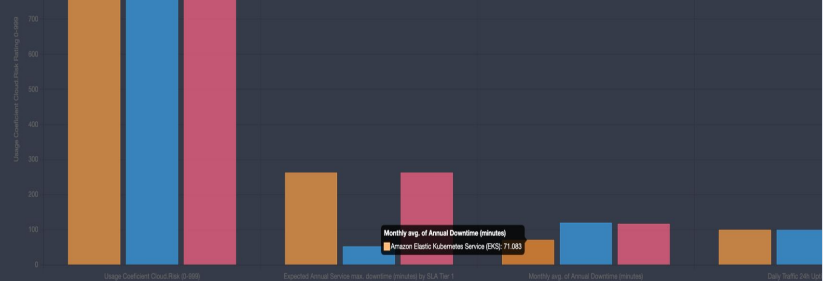
Premium

Outage Information

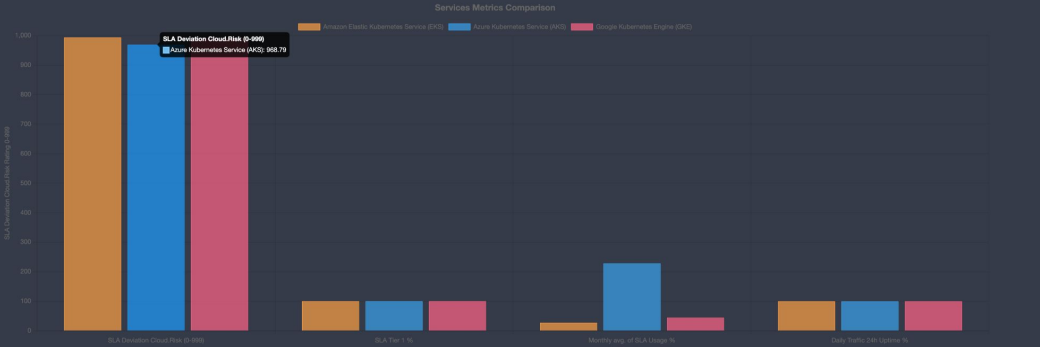
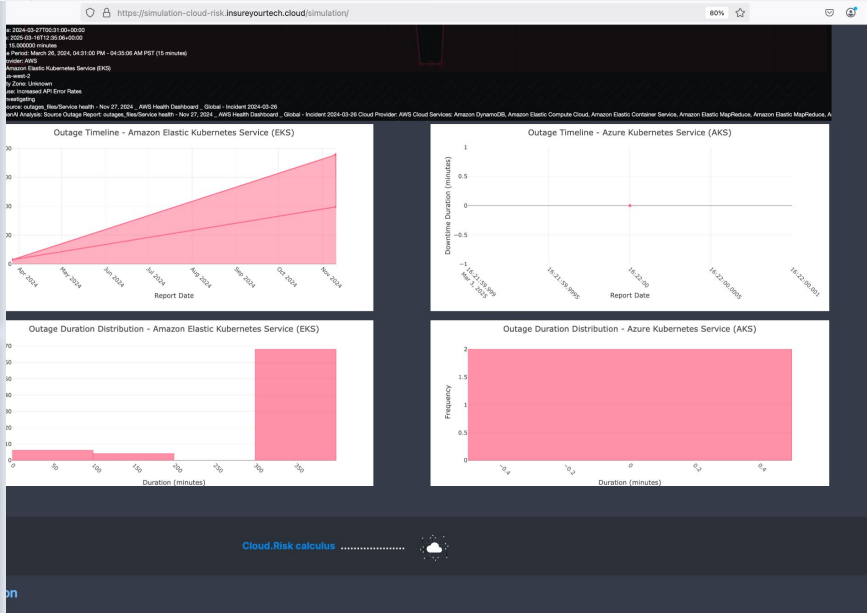
Cloud.Risk uses webscrappers and GenAI to get outage information from the cloud vendors

The CloudRisk.Simulation Freemium tier is limited to Information from January 2024 until now

Consider Upgrading to Premium for more accurate information



Cloud Providers Comparison





## - Outages API and Services API

JSON	Raw Data	Headers
Save	Copy	Collapse All
Expand All (slow)	Filter JSON	
12609:	{...}	
12610:	{...}	
12611:	{...}	
12612:	{...}	
12613:	{...}	
12614:	{...}	
12615:	{...}	
12616:	{...}	
12617:	{...}	
12618:	{...}	
outage_timestamp:	"1736319240.000000"	
source_outage_report:	"outages_files/Google Clo...h - 2025-01-08 - part2"	
cloud_provider:	"GCP"	
cloud_service:	"Pub/Sub"	
regions:	"europe-southwest1"	
availability_zones:	"not specified"	
start_time:	"2025-01-08T06:54:00+00:00"	
end_time:	"2025-01-08T08:07:00+00:00"	
outage_status:	"resolved"	
impact:	null	
duration:	"1 hour, 13 minutes"	
duration_minutes:	"73.000000"	
root_cause:	"Configuration change tha... to restore the service"	
resolution:	null	
downtime_period:	"2025-01-08 07:30 - 2025-01-08 08:07 UTC"	
incident_id:	null	
affected_components:	"Google Cloud VertexAI"	
mitigation_steps:	null	
cloudrisk_genai_output:	"Source Outage Report: outages_files/Google Cloud Service Health - 2025-01-08 - part2\nCloud Provider: GCP\nCloud Services: Google Cloud Google Cloud Pub/Sub, Pub/Sub\nRegions: us-west4, us-east1, us-east5, global-default, europe-west1, northamerica-northeast2, europe-west southamerica-west1, us-east4, europe-southwest1, australia-southeast1, us-west2, asia-south1, me-central1, us-west3, asia-northeast2, as southeast2, us-south1, us-west1, asia-east2, me-west1, australia-southeast2, europe-central2, europe-west4, europe-west8, us-central1, as northamerica-northeast1\nAvailability Zones: not specified\nStart Time: 2025-01-08 06:54:00+00:00\nEnd Time: 2025-01-08 08:07:00+00:00\n minutes\nDuration (minutes): 73\nRoot Cause: Configuration change that was rolled back to restore the service\nResolution: \nDowntime Pe Components: Google Cloud VertexAI"	
12619:	{...}	
12620:	{...}	
12621:	{...}	
12622:	{...}	
12623:	{...}	

JSON	Raw Data	Headers
Save	Copy	Collapse All
Expand All (slow)	Filter JSON	
332:	{...}	
database_key_id:	"10000000000163"	
service_name:	"MongoDB Atlas Search"	
service_provider:	"MongoDB"	
global_or_by_regions:	"global"	
region:	null	
availability_zone:	null	
service_load_at_customer_low_medium_high_very_high_1_2_3_4:	"4"	
customer_service_type_b2c_or_b2b_1_yes_0_no:	"1"	
customer_service_up_hours_8h_day_12h_day_24h_day:	"24"	
customer_service_annual_workdays:	"365"	
service_sla_0_99_9999_for_tier1:	"99.995000"	
service_sla_0_99_9999_for_tier2:	"99.000000"	
service_sla_0_99_9999_for_tier3:	"95.000000"	
service_sla_0_99_9999_for_tier4:	"95.000000"	
percentage_service_credit_back_tier1:	"10.0000"	
percentage_service_credit_back_tier2:	"25.0000"	
percentage_service_credit_back_tier3:	"100.0000"	
percentage_service_credit_back_tier4:	"100.0000"	
webscraper_annual_period_service_down_per_year_in_minutes:	"3201.00"	
annual_service_minutes_up_365_24_60_equals_525600:	"525600.0000"	
expected_annual_service_minutes_up_by_sla_tier1:	"525573.7200"	
expected_annual_service_minutes_up_by_sla_tier2:	"520344.0000"	
expected_annual_service_minutes_up_by_sla_tier3:	"499320.0000"	
expected_annual_service_minutes_up_by_sla_tier4:	"499320.0000"	
expected_annual_service_minutes_down_by_sla_tier1:	"26.2800"	
expected_annual_service_minutes_down_by_sla_tier2:	"5256.0000"	
expected_annual_service_minutes_down_by_sla_tier3:	"26280.0000"	
expected_annual_service_minutes_down_by_sla_tier4:	"26280.0000"	
service_debit_credit_more_than_annual_sla_tier1:	"-3174.7200"	
expected_percentage_mins_down_inside_agreed_sla_tier1:	"0.00500000"	
actual_percentage_total_mins_down_from_webscraping:	"0.60901826%"	
actual_percentage_mins_down_on_agreed_sla:	"0.60904872%"	
gap_time_percent_between_sla_down_actual_down:	"-0.604049%"	
riskcoef_per_service_from_gap_expected_actual_time_down:	"0.604049%"	
service_sla_usage_percentage:	"12180.97435"	
service_traffic_coef_by_percent_down:	"0.6090182648"	
sla_deviation_connected_risk_0_999:	"871.178"	
usage_connected_risk_0_999:	"980.747"	
annual_outage_time_days_hours_mins:	"1 days 1h32 down"	
remarks_outage_genai:	"Llama3.2-B Outage Analy...and is being monitored."	
public_locationa_and_status_genai:	null	
outages_other_impacted_services_genai:	null	
notes:	null	
333:	{...}	



# CloudRiskGraph.com



Data Product  
by

FuelBigData.com



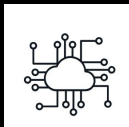
# Thank You !

Contact us

[business@insureyourtech.cloud](mailto:business@insureyourtech.cloud)

[CloudRiskGraph.com](https://CloudRiskGraph.com)

[InsureYourTech.cloud](https://InsureYourTech.cloud)



UK - London

