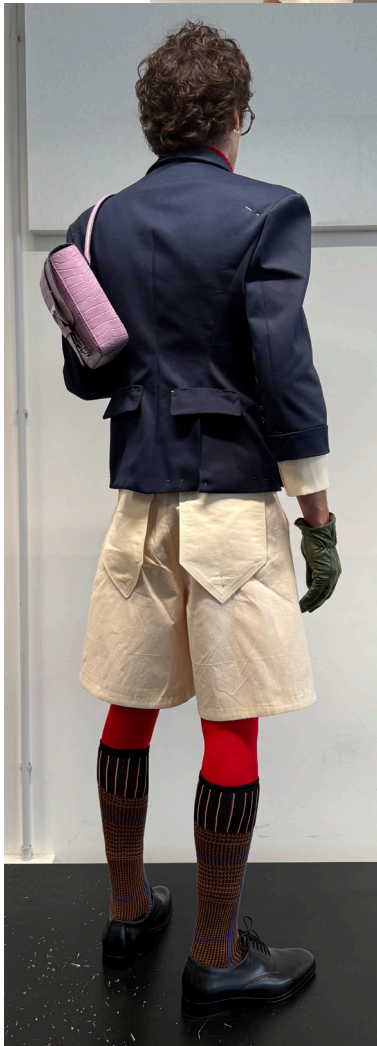


Zaz Alvarino

2026

**Pattern Making &
Tailoring Portfolio**









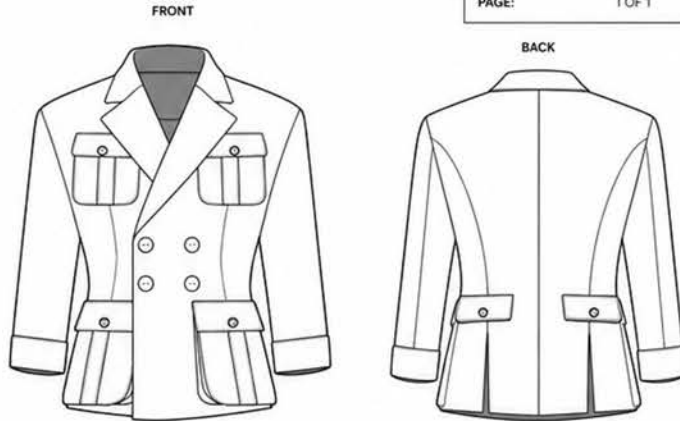




STRUCTURED UTILITY BLAZER

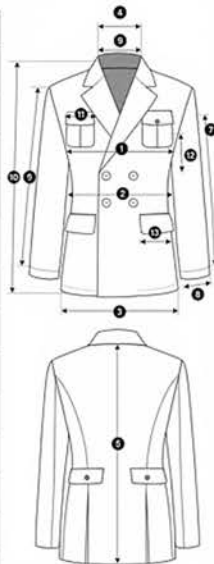
DESIGNER: ZAZ
 DATE: 01 / 05 / 2026
 PAGE: 1 OF 1

COLLECTION: 4TH YEAR COLLECTION
 SEASON: FW26
 STYLE NO.: JKT-04-01
 SIZE (BASE): IT 46 (SKINNY MALE MODEL)
 FIT: SLIM, STRUCTURED, SLIGHTLY CROPPED
 DESCRIPTION: Double-breasted tailored blazer with utility inspired pocketing, waist seam, and decorative back tabs.



MEASUREMENT SPEC (CM)

POM	DESCRIPTION	MEASUREMENT	TOLERANCE
1	CHEST (1" BELOW ARMHOLE)	52.0	± 0.5
2	WAIST (NATURAL)	45.0	± 0.5
3	HEM WIDTH	52.0	± 0.5
4	SHOULDER WIDTH	44.0	± 0.3
5	CENTER BACK LENGTH	72.0	± 0.5
6	SLEEVE LENGTH	61.5	± 0.5
7	BICEP (1" BELOW ARMHOLE)	19.0	± 0.3
8	SLEEVE OPENING	13.0	± 0.3
9	NECK WIDTH (SEAM TO SEAM)	17.5	± 0.3
10	FRONT LENGTH (HPS TO HEM)	68.0	± 0.5
11	UPPER POCKET WIDTH	13.0	± 0.2
12	UPPER POCKET HEIGHT	14.5	± 0.2
13	LOWER POCKET WIDTH	16.0	± 0.2
	LOWER POCKET HEIGHT	17.0	± 0.2



CONSTRUCTION & DESIGN DETAILS

- Double-breasted closure (6-button layout, 2 functional)
- Notch lapel with pad-stitched roll
- Chest patch pockets with flap and vertical stitched channels
- Lower patch pockets with flap and integrated pleat
- Waist seam for shaping and slight flare at hem
- Decorative back tabs with button (non-functional)
- Set-in sleeves with slight forward pitch
- Cropped sleeve length showing shirt cuff



CALLOUTS

- PAD-STITCHED LAPEL**
Lapel constructed with pad-stitching and rolled edge.
- CHEST POCKETS**
Patch pockets with flap closure and vertical stitched channel detailing.
- LOWER POCKETS**
Pleated patch pockets with flap closure and internal volume.
- WAIST SEAM**
Structural seam for waist suppression and hem flare.
- BACK TABS**
Decorative tabs with button closure. Non-functional.
- SHOULDER CONSTRUCTION**
Light shoulder pad with sleeve head roll for structure.

MATERIALS & COMPONENTS (BOM)

SHELL FABRIC
 Fabric: Wool Twill
 Composition: 100% Wool
 Weight: ~300 gsm
 Color: Navy
 Finish: Matte, structured



LINING
 Fabric: Viscose Twill
 Composition: 100% Viscose
 Color: Navy



INTERFACING / STRUCTURE
 Canvas: Horsehair & Camelhair
 Type: Traditional Canvas
 Placement: Chest & Lapel
 Notes: Pad-stitched lapel



TRIMS & HARDWARE

BUTTONS (FRONT)
 Qty: 6 (2 functional)
 Size: 20mm
 Color: Navy
 Finish: Matte



BUTTONS (POCKETS)
 Qty: 4
 Size: 15mm
 Color: Navy
 Finish: Matte



BUTTONS (BACK TABS)
 Qty: 2
 Size: 15mm
 Color: Navy
 Finish: Matte



TOTAL BUTTONS: 12

CONSTRUCTION & FINISHING

CANVAS / STRUCTURE: Horsehair & camelhair canvas on chest and lapel. Pad-stitched lapel.

SHOULDER: Lightweight shoulder pad with sleeve head roll.

SLEEVE: Set-in sleeve with slight forward pitch.

SEAMS: Tailored seams with internal pressing and flannel strip where required.

POCKETS: All pockets constructed separately and applied to front panels before body assembly.

LINING: Full lining. Bagged lining construction.

HEM / CUFF: Clean finish. Cropped sleeve length.

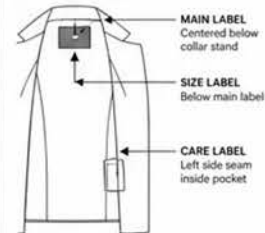
PRESSING: Tailored pressing for structured finish.

CARE LABEL



DO NOT WASH
 DO NOT BLEACH
 DO NOT TUMBLE DRY
 COOL IRON
 DRY CLEAN ONLY

LABEL PLACEMENT

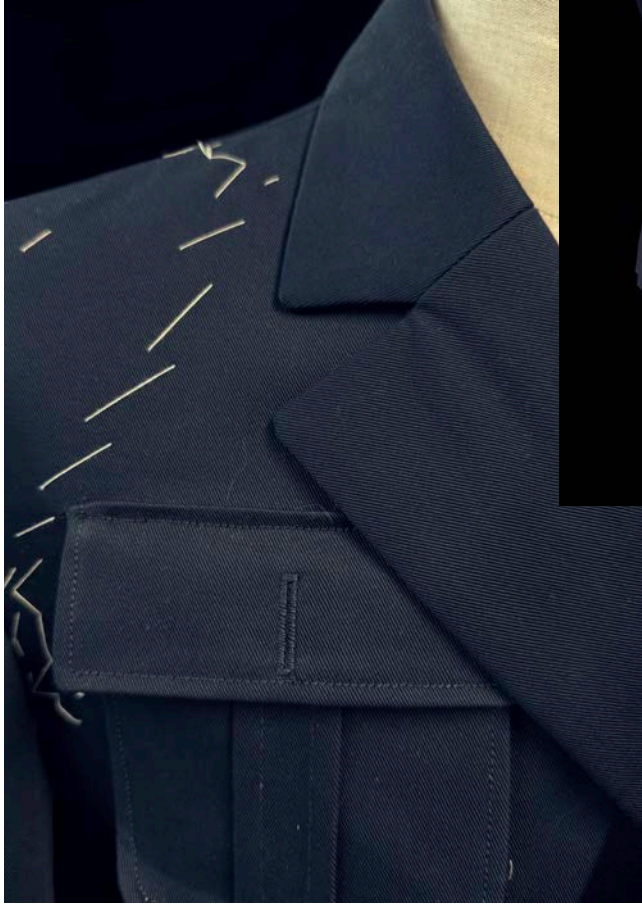


NOTES / SPECIAL INSTRUCTIONS

Back tabs are purely aesthetic (non-functional).
 Maintain clean silhouette at waist with controlled flare at hem.
 All stitching to be neat and consistent (topstitching 0.5cm from edge).

APPROVAL

DATE:
 SIGNATURE:













DOUBLE BREASTED BLAZER

DESIGNER: ZAZ
DATE: 01 / 05 / 2026
PAGE: 1 OF 1

COLLECTION: 4TH YEAR COLLECTION
SEASON: FW26
STYLE NO.: JKT-04-02
SIZE (BASE): IT 46 (SKINNY MALE MODEL)
FIT: SLIM, STRUCTURED, FITTED WAIST WITH BROAD SHOULDERS
DESCRIPTION: Double-breasted tailored blazer with peak lapel, fitted waist, and minimalist chest welt pocket. Cropped sleeve length.

FRONT



BACK



MEASUREMENT SPEC (CM)



POM	DESCRIPTION	MEASUREMENT	TOLERANCE
1	CHEST (1" BELOW ARMHOLE)	48.5	± 0.5
2	WAIST (NATURAL)	42.5	± 0.5
3	HEM WIDTH	47.0	± 0.5
4	SHOULDER WIDTH	45.0	± 0.3
5	CENTER BACK LENGTH	65.0	± 0.5
6	SLEEVE LENGTH	58.0	± 0.5
7	BICEP (1" BELOW ARMHOLE)	17.0	± 0.3
8	SLEEVE OPENING	12.5	± 0.3
9	NECK WIDTH (SEAM TO SEAM)	17.0	± 0.3
10	FRONT LENGTH (HPS TO HEM)	63.0	± 0.5

CONSTRUCTION & DESIGN DETAILS

- Double-breasted closure (6-button layout, 2 functional)
- Peak lapel with pad-stitched roll
- Chest welt pocket (functional)
- Darted front panels for waist shaping
- Princess seams at back for fitted silhouette
- Set-in sleeves with slight forward pitch
- Cropped sleeve length showing shirt cuff

CALLOUTS

- 1 PEAK LAPEL:**
Pad-stitched lapel with structure.
- 2 CHEST WELT POCKET:**
Single welt pocket, functional.
- 3 FITTED WAIST:**
Darted front panels for a close fit.
- 4 PRINCESS SEAMS (BACK):**
Shaping seams for fitted back.
- 5 CROPPED SLEEVE:**
Sleeve length finishes above wrist, showing shirt cuff.



MATERIALS & COMPONENTS (BOM)

SHELL FABRIC

Fabric: Wool Twill
Composition: 100% Wool
Weight: ~300 gsm
Color: Navy
Finish: Matte, structured



LINING

Fabric: Viscose Twill
Composition: 100% Viscose
Color: Navy



INTERFACING / STRUCTURE

Canvas: Horsehair & Camelhair
Type: Traditional Canvas
Placement: Chest & Lapel
Notes: Pad-stitched lapel



TRIMS & HARDWARE

BUTTONS (FRONT)

Qty: 5 (4 functional)
Size: 20mm
Color: Navy
Finish: Matte



TOTAL BUTTONS: 5

CONSTRUCTION & FINISHING

CANVAS / STRUCTURE: Horsehair & camelhair canvas on chest and lapel. Pad-stitched lapel.

SHOULDER: Lightweight shoulder pad with sleeve head roll.

SLEEVE: Set-in sleeve with slight forward pitch.

SEAMS: Tailored seams with internal pressing and flannel strip where required.

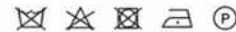
POCKETS: Chest welt pocket constructed separately and applied before body assembly.

LINING: Full lining. Bagged lining construction.

HEM / CUFF: Clean finish. Cropped sleeve length.

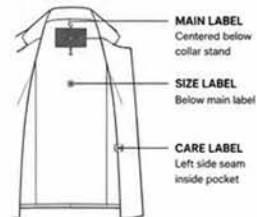
PRESSING: Tailored pressing for structured finish.

CARE LABEL & PLACEMENT



DO NOT WASH
DO NOT BLEACH
DO NOT TUMBLE DRY
COOL IRON
DRY CLEAN ONLY

LABEL PLACEMENT



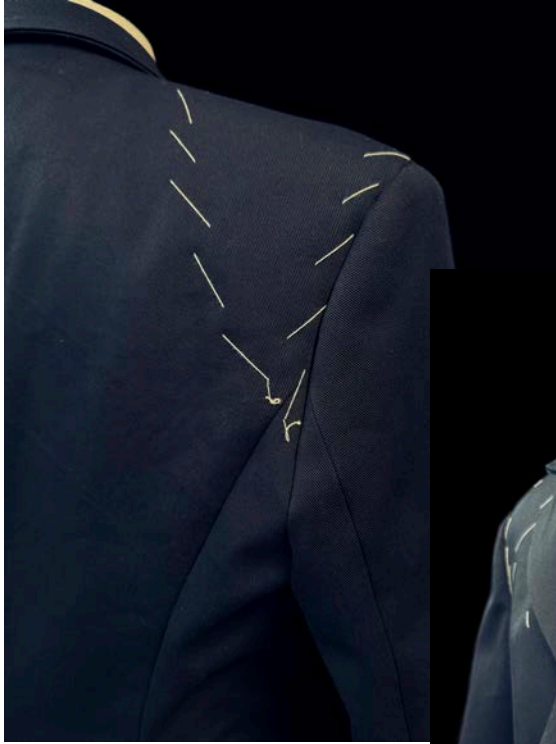
NOTES / SPECIAL INSTRUCTIONS

- Maintain clean silhouette at waist with controlled shaping.
- All stitching to be neat and consistent (topstitching 0.5cm from edge where applicable).
- Ensure lapel roll is smooth and even after pressing.

APPROVAL

DATE: _____

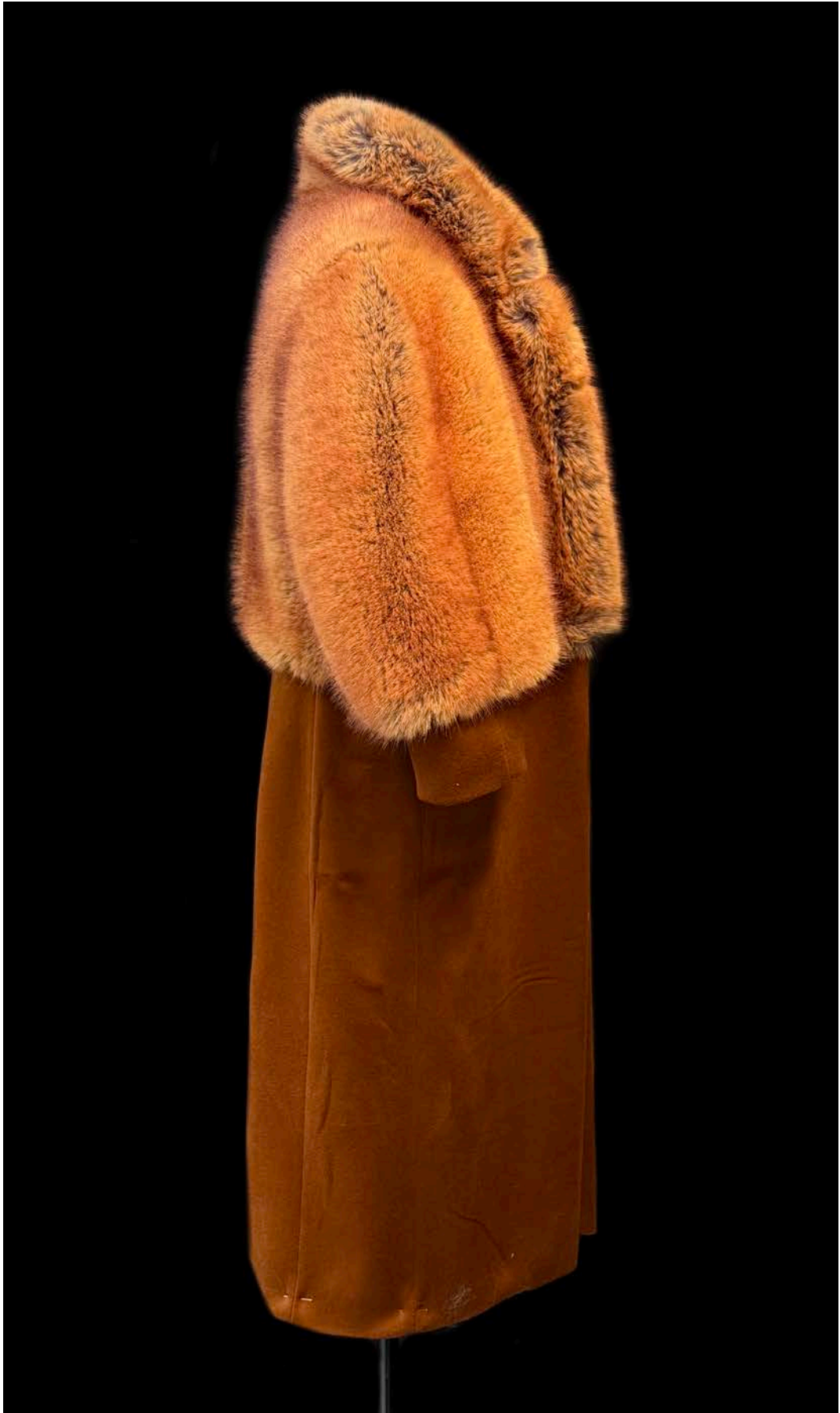
SIGNATURE: _____



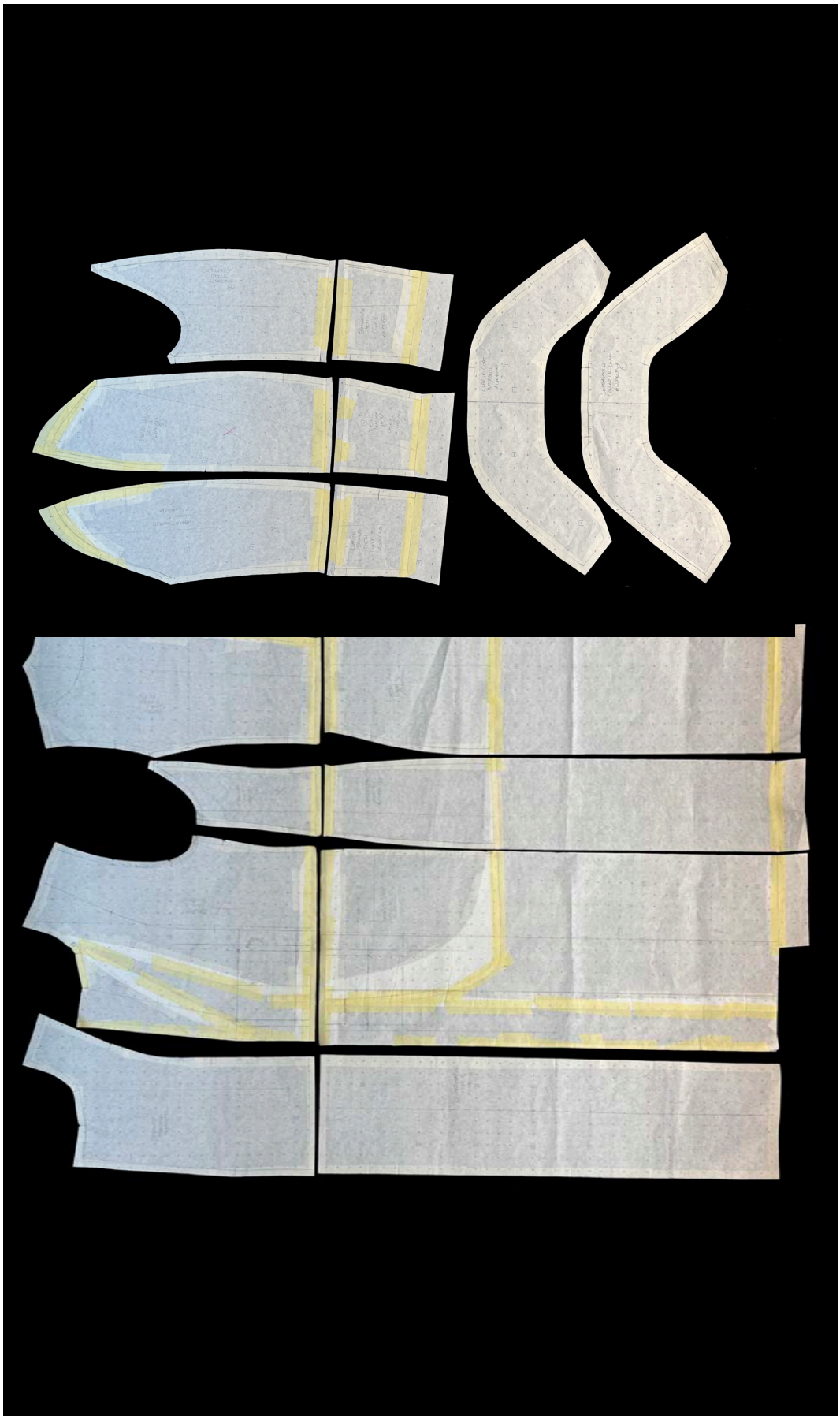












FUR COLLAR HYBRID COAT

4TH YEAR COLLECTION | FW26 | CT-04-05

DESIGNER: ZAZ
DATE: 01 / 05 / 2026
PAGE: 1 OF 1

COLLECTION: 4TH YEAR COLLECTION
SEASON: FW26
STYLE NO.: CT-04-05
SIZE (BASE): IT 46 (SKINNY MALE MODEL)
FIT: STRAIGHT, SLIGHTLY RELAXED BODY
STRONG SHOULDER LINE
VOLUME DISTRIBUTED THROUGH LENGTH
DESCRIPTION: Single-breasted hybrid coat with upper fur construction and wool body. Features oversized peak collar in fur and concealed hook-and-eye closure beneath decorative buttons. Buttons on fur are non-functional. Includes back patch pockets and back vent.

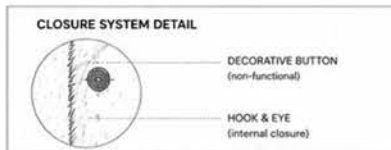
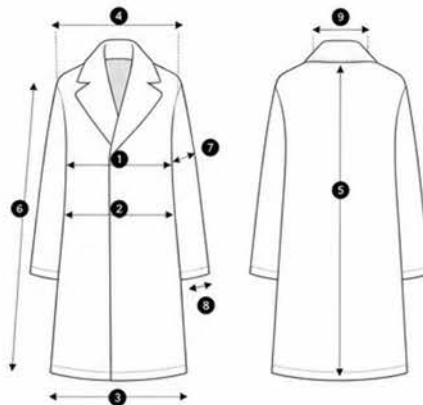


- CONSTRUCTION & DESIGN DETAILS**
- Single-breasted closure (3 visible buttons)
 - Upper section fully constructed in fur
 - Lower body in wool coating
 - Buttons on fur are decorative (non-functional)
 - Internal hook-and-eye closure beneath fur panel
 - Oversized peak collar in fur
 - Dropped shoulder transition from fur to wool
 - Straight body with slight A-line from waist
 - Back patch pockets with flaps
 - Back vent for movement
 - Full lining



MEASUREMENT SPEC (CM)

POM	DESCRIPTION	MEASUREMENT	TOLERANCE
1	CHEST (1" BELOW ARMHOLE)	54.0	± 0.5
2	WAIST	52.0	± 0.5
3	HEM WIDTH	60.0	± 0.5
4	SHOULDER WIDTH	48.0	± 0.5
5	CENTER BACK LENGTH	115.0	± 0.5
6	SLEEVE LENGTH	62.0	± 0.5
7	BICEP	20.0	± 0.3
8	SLEEVE OPENING	15.0	± 0.3
9	NECK WIDTH	18.0	± 0.3
10	FRONT LENGTH	112.0	± 0.5



CALLOUTS

- PEAK COLLAR**
Oversized peak collar constructed in dyed fur.
- HYBRID BODY**
Upper fur panel joined to wool lower body.
- CLOSURE SYSTEM**
Decorative buttons on fur with internal hook-and-eye fastening.
- BACK POCKETS**
Large patch pockets with flaps on back.
- BACK VENT**
Single vent for movement and structure.

MATERIALS & COMPONENTS (BOM)

FUR (UPPER PANEL)
Type: Dyed fur / Faux fur
Finish: Textured, directional pile
Color: Orange brown (var. in tone)

WOOL (BODY)
Fabric: Wool coating
Weight: ~500-600 gsm
Color: Rust brown
Finish: Brushed / matte

LINING
Fabric: Viscose / Cupro
Color: Tonal brown

INTERFACING / STRUCTURE
Front panels stabilized
Shoulder structure reinforced
No canvas in fur section

TRIMS & HARDWARE

BUTTONS (VISIBLE)
Qty: 3 (2 non-functional)
Material: Plastic / Horn
Placement: 2 in fur, 1 in wool
Finish: Matte

TOTAL BUTTONS: 3
TOTAL HOOK & EYE SETS: 2

CONSTRUCTION & FINISHING

FUR PANEL: Upper yoke constructed separately and attached.

SHOULDER: Soft structure with natural slope.

SLEEVE: Set-in sleeves.

SEAMS: Clean finished, pressed.

POCKETS: Back patch pockets with flaps.

LINING: Full lining, bagged construction.

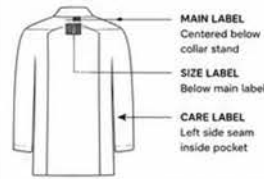
HEM: Blind stitched.

PRESSING: Light press (avoid crushing fur).

CARE LABEL

DO NOT WASH
DO NOT BLEACH
DO NOT TUMBLE DRY
PROFESSIONAL FUR CLEAN ONLY

LABEL PLACEMENT



NOTES / SPECIAL INSTRUCTIONS

- Buttons on fur are non-functional.
- Closure relies on internal hook-and-eye system.
- Fur direction must be consistent across panels.
- Avoid excessive pressing on fur.

APPROVAL

DATE: _____
SIGNATURE: _____













