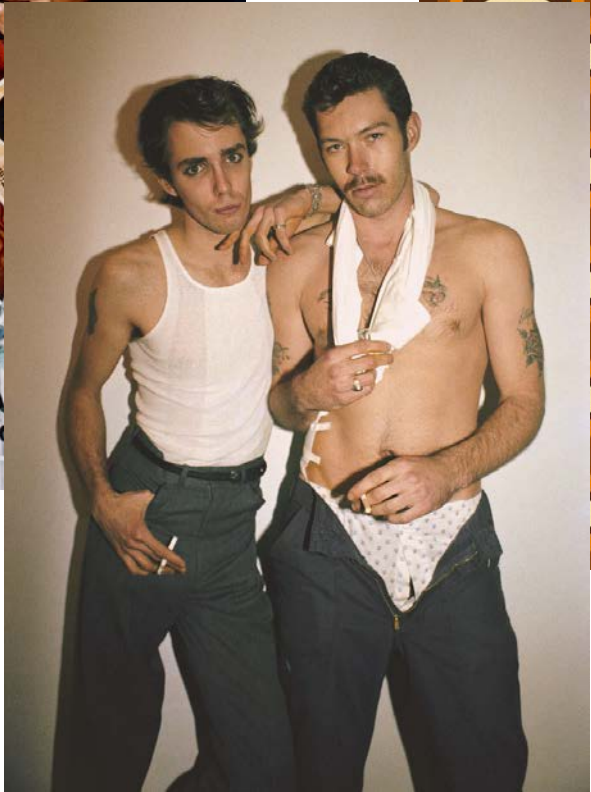
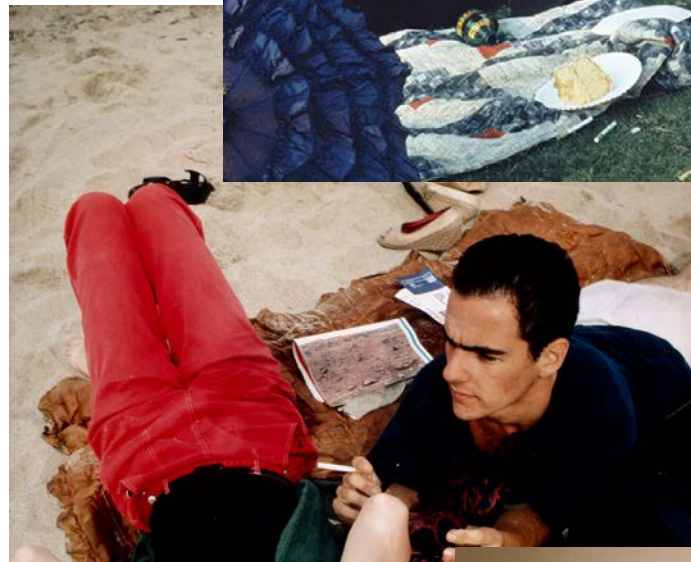


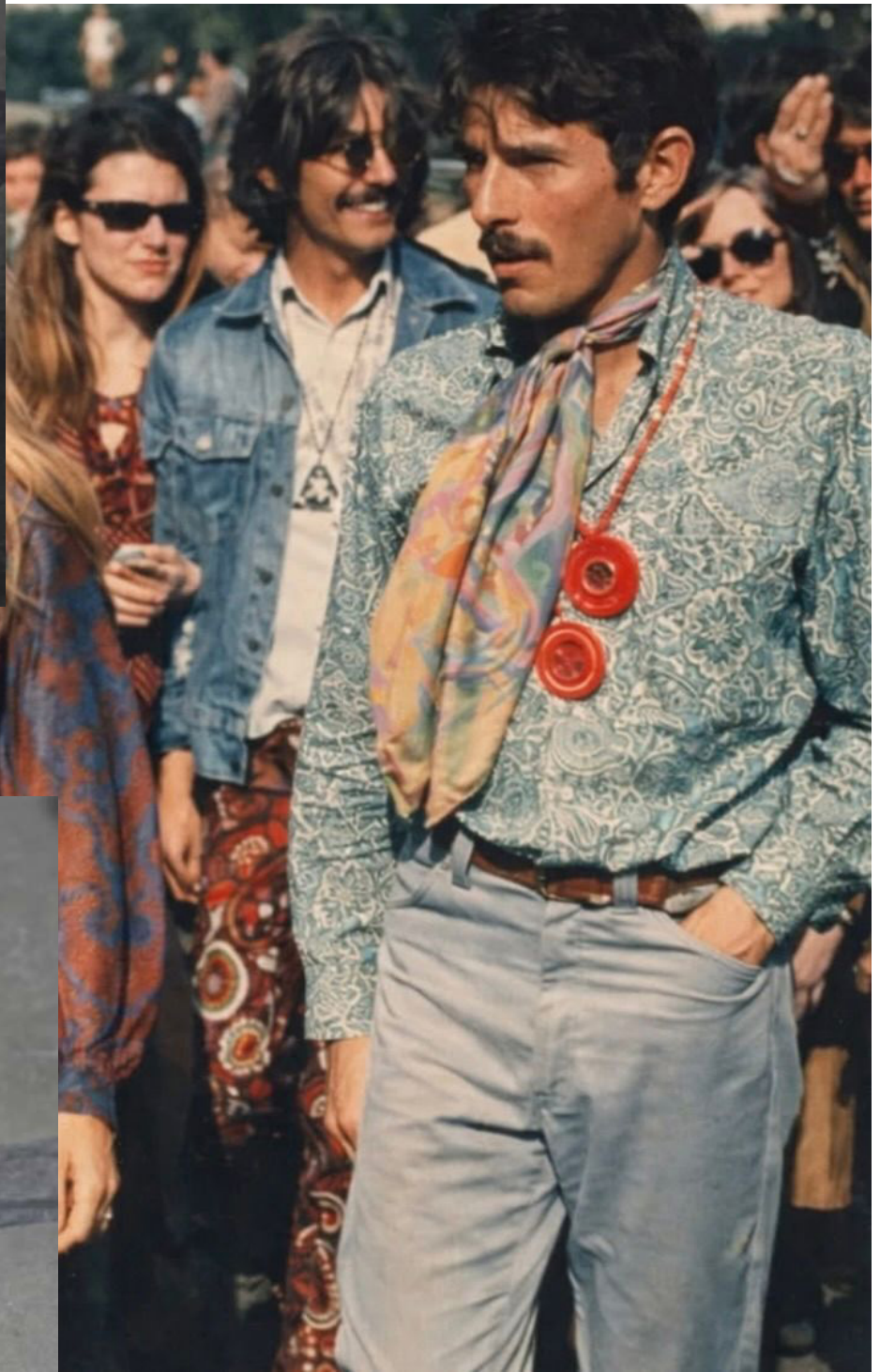
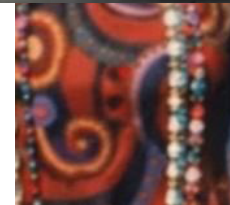
HOT NERDS

ZAZ ALVARINO

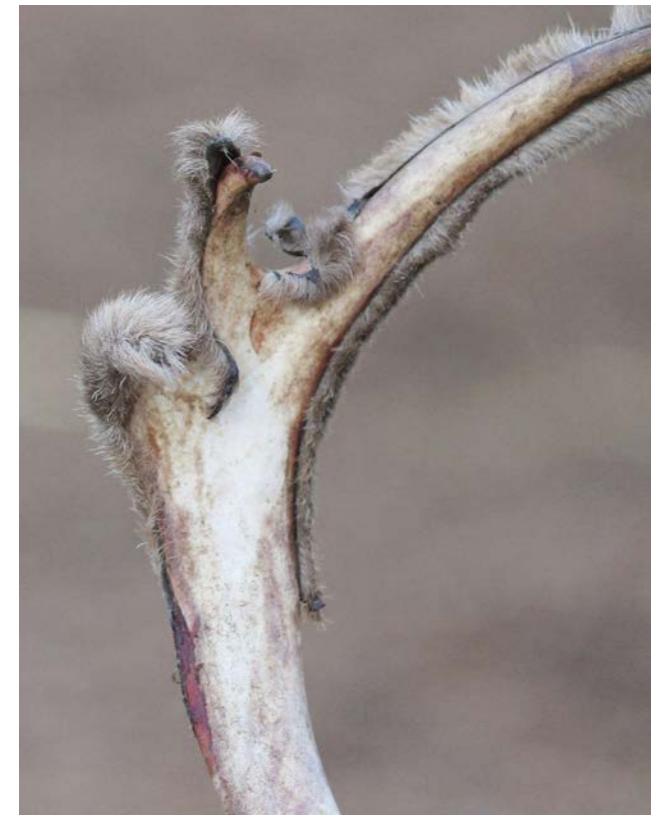
PORTFOLIO WEBSITE:





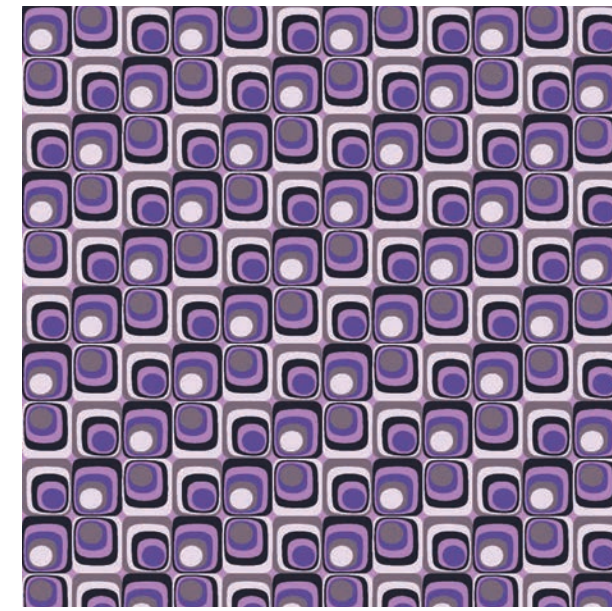
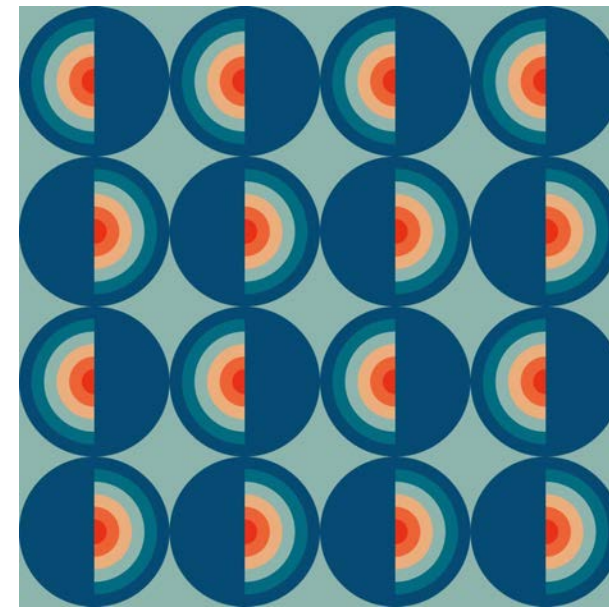
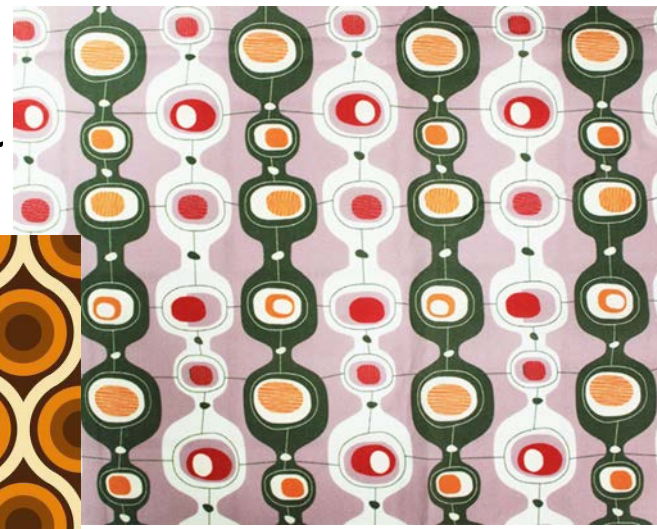
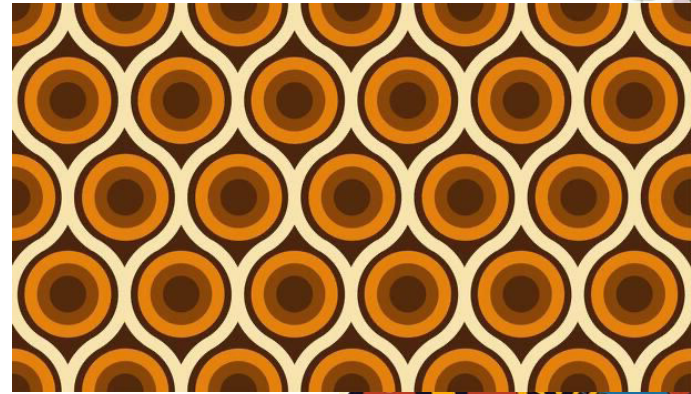








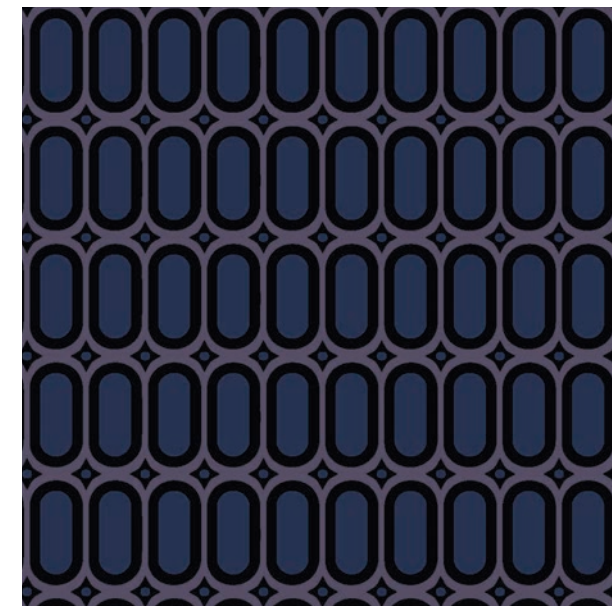
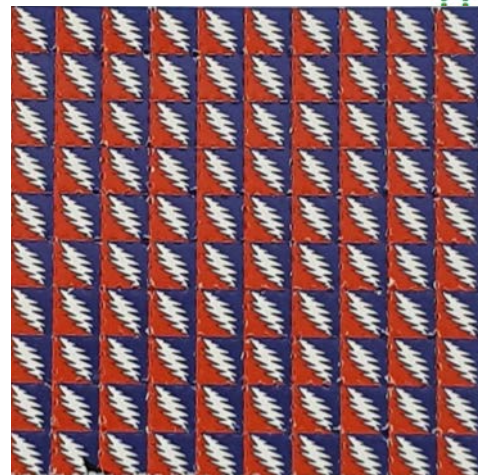
Print inspiration



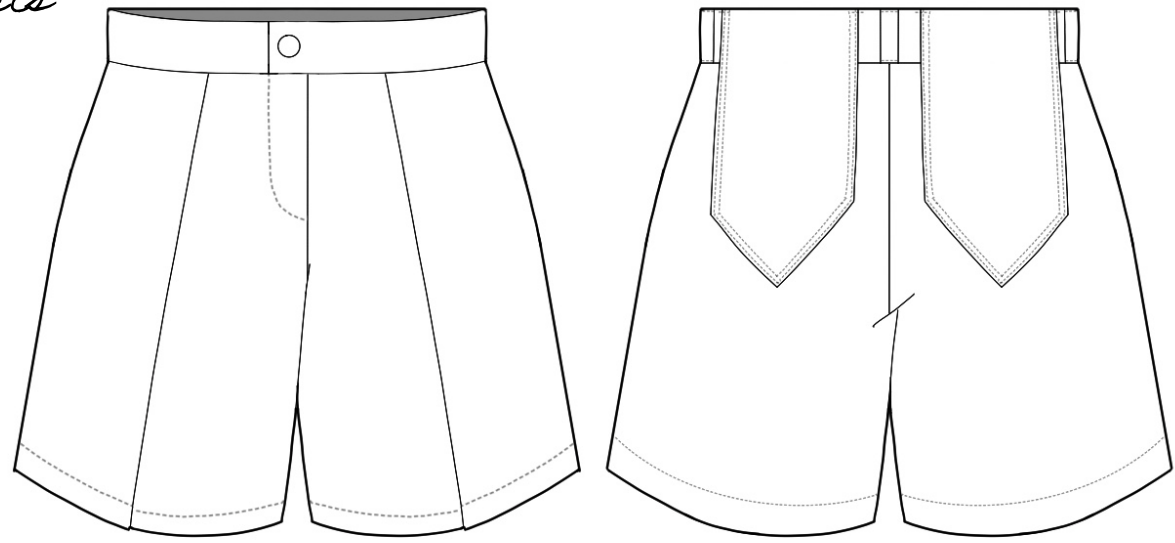
Results



LSD Tabs



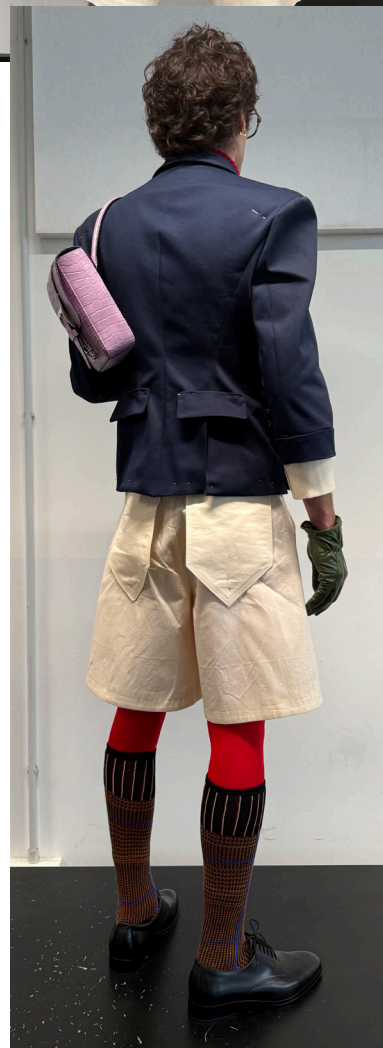
*"High-Waisted"
Pockets*



*Line up the
pattern pre-
cisely*

"Invisible" Back Pockets





Faux half-shirt



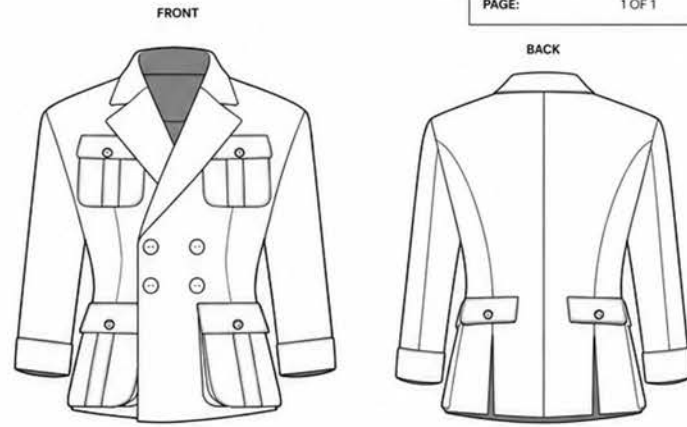
Nerd symmetry



STRUCTURED UTILITY BLAZER

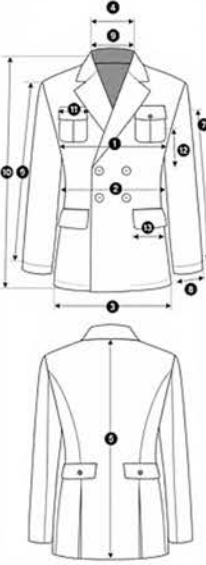
DESIGNER: ZAZ
 DATE: 01 / 05 / 2026
 PAGE: 1 OF 1

COLLECTION: 4TH YEAR COLLECTION
 SEASON: FW26
 STYLE NO.: JKT-04-01
 SIZE (BASE): IT 46 (SKINNY MALE MODEL)
 FIT: SLIM, STRUCTURED, SLIGHTLY CROPPED
 DESCRIPTION: Double-breasted tailored blazer with utility inspired pocketing, waist seam, and decorative back tabs.



MEASUREMENT SPEC (CM)

POM	DESCRIPTION	MEASUREMENT	TOLERANCE
1	CHEST (1" BELOW ARMHOLE)	52.0	± 0.5
2	WAIST (NATURAL)	45.0	± 0.5
3	HEM WIDTH	52.0	± 0.5
4	SHOULDER WIDTH	44.0	± 0.3
5	CENTER BACK LENGTH	72.0	± 0.5
6	SLEEVE LENGTH	61.5	± 0.5
7	BICEP (1" BELOW ARMHOLE)	19.0	± 0.3
8	SLEEVE OPENING	13.0	± 0.3
9	NECK WIDTH (SEAM TO SEAM)	17.5	± 0.3
10	FRONT LENGTH (HPS TO HEM)	68.0	± 0.5
11	UPPER POCKET WIDTH	13.0	± 0.2
12	UPPER POCKET HEIGHT	14.5	± 0.2
13	LOWER POCKET WIDTH	16.0	± 0.2
	LOWER POCKET HEIGHT	17.0	± 0.2



CONSTRUCTION & DESIGN DETAILS

- Double-breasted closure (6-button layout, 2 functional)
- Notch lapel with pad-stitched roll
- Chest patch pockets with flap and vertical stitched channels
- Lower patch pockets with flap and integrated pleat
- Waist seam for shaping and slight flare at hem
- Decorative back tabs with button (non-functional)
- Set-in sleeves with slight forward pitch
- Cropped sleeve length showing shirt cuff

CALLOUTS

- PAD-STITCHED LAPEL**
Lapel constructed with pad-stitching and rolled edge.
- CHEST POCKETS**
Patch pockets with flap closure and vertical stitched channel detailing.
- LOWER POCKETS**
Pleated patch pockets with flap closure and internal volume.
- WAIST SEAM**
Structural seam for waist suppression and hem flare.
- BACK TABS**
Decorative tabs with button closure. Non-functional.
- SHOULDER CONSTRUCTION**
Light shoulder pad with sleeve head roll for structure.



MATERIALS & COMPONENTS (BOM)

SHELL FABRIC
 Fabric: Wool Twill
 Composition: 100% Wool
 Weight: ~300 gsm
 Color: Navy
 Finish: Matte, structured

LINING
 Fabric: Viscose Twill
 Composition: 100% Viscose
 Color: Navy

INTERFACING / STRUCTURE
 Canvas: Horsehair & Camelhair
 Type: Traditional Canvas
 Placement: Chest & Lapel
 Notes: Pad-stitched lapel

TRIMS & HARDWARE

BUTTONS (FRONT)
 Qty: 6 (2 functional)
 Size: 20mm
 Color: Navy
 Finish: Matte

BUTTONS (POCKETS)
 Qty: 4
 Size: 15mm
 Color: Navy
 Finish: Matte

BUTTONS (BACK TABS)
 Qty: 2
 Size: 15mm
 Color: Navy
 Finish: Matte

TOTAL BUTTONS: 12

CONSTRUCTION & FINISHING

CANVAS / STRUCTURE: Horsehair & camelhair canvas on chest and lapel. Pad-stitched lapel.

SHOULDER: Lightweight shoulder pad with sleeve head roll.

SLEEVE: Set-in sleeve with slight forward pitch.

SEAMS: Tailored seams with internal pressing and fannel strip where required.

POCKETS: All pockets constructed separately and applied to front panels before body assembly.

LINING: Full lining. Bagged lining construction.

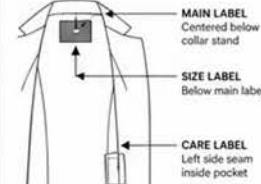
HEM / CUFF: Clean finish. Cropped sleeve length.

PRESSING: Tailored pressing for structured finish.

CARE LABEL

DO NOT WASH
 DO NOT BLEACH
 DO NOT TUMBLE DRY
 COOL IRON
 DRY CLEAN ONLY

LABEL PLACEMENT



NOTES / SPECIAL INSTRUCTIONS

Back tabs are purely aesthetic (non-functional).
 Maintain clean silhouette at waist with controlled flare at hem.
 All stitching to be neat and consistent (topstitching 0.5cm from edge).

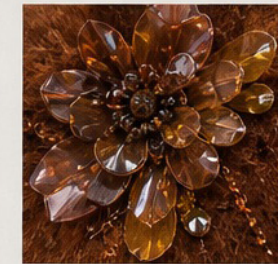
APPROVAL

DATE:
 SIGNATURE:

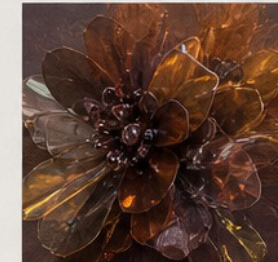


ORGANIC, IRREGULAR, INVASIVE

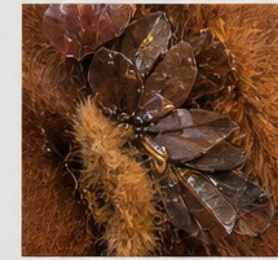
MATERIAL EXPLORATION



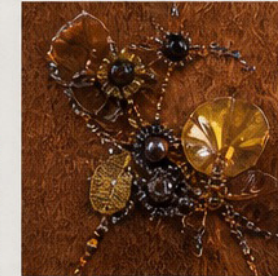
- PLASTIC APPLIQUÉ**
- PETG / PVC laser cut
 - Heat shaped
 - Layered for depth
 - Hand stitched



- ORGANZA + VINYL**
- Sheer organza for softness
 - Vinyl for structure
 - Adds translucency and prism effect



- LEATHER + FUR**
- Small leather shards
 - Fur fragments for molting effect
 - Hand cut and layered



- BEADING + THREAD**
- Glass beads and bugles
 - Metallic stitching
 - Connective threads like veins

COLOR PALETTE



RUST TONES + ACIDIC YELLOW + IRIDESCENT ACCENTS



