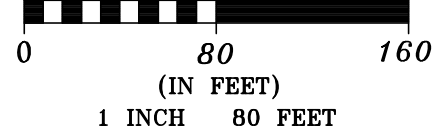


MAP OF SURVEY

GRAPHIC SCALE

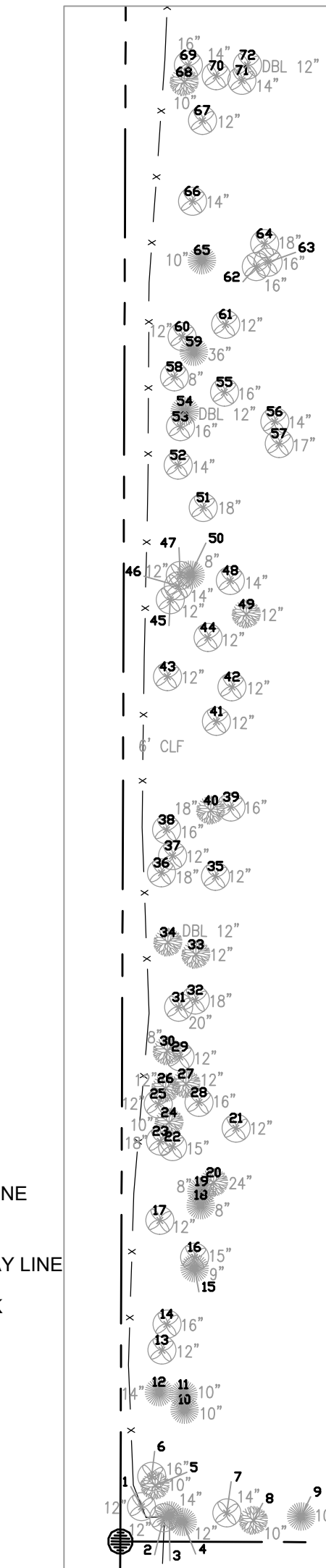


- ABBREVIATIONS**
- P.O.C. POINT OF COMMENCEMENT
  - P.O.B. POINT OF BEGINNING
  - LB LICENSED BUSINESS
  - LS PROFESSIONAL LAND SURVEYOR
  - PLS PROFESSIONAL LAND SURVEYOR
  - PSM PROFESSIONAL SURVEYOR & MAPPER
  - PB PLAT BOOK
  - ORB OFFICIAL RECORDS BOOK
  - PG PAGE
  - PRM PERMANENT REFERENCE MONUMENT
  - PCP PERMANENT CONTROL POINT
  - FPR FIXED REFERENCE POINT
  - BM BENCH MARK
  - CM 4"x4" CONCRETE MONUMENT
  - FIR FOUND IRON ROD
  - SIR SET IRON ROD
  - FIP FOUND IRON PIPE
  - FN&D FOUND NAIL & DISC
  - SN&D SET NAIL & DISC
  - FN&TT FOUND NAIL & TIN TAB
  - FD FOUND
  - EXIST EXISTING
  - PROP PROPOSED
  - PC POINT OF CURVATURE
  - POC POINT ON CURVE
  - PRC POINT OF REVERSE CURVATURE
  - PCC POINT OF COMPOUND CURVATURE
  - PT POINT OF TANGENCY
  - PI POINT OF INTERSECTION
  - POL POINT ON LINE
  - P/L PROPERTY LINE
  - CL CENTERLINE
  - R/W RIGHT OF WAY
  - D DELTA OR CENTRAL ANGLE
  - T TANGENT
  - A DISTANCE ALONG CURVE
  - (M) MEASURED DISTANCE
  - (S) DISTANCE ON PLAT
  - (D) DEED DISTANCE
  - NVD NATIONAL GEODETIC VERTICAL DATUM
  - NAVD NORTH AMERICAN VERTICAL DATUM
  - ELEV ELEVATION
  - BFE BASE FLOOD ELEVATION
  - FEE FINISHED FLOOR ELEVATION
  - FIRM FEDERAL INSURANCE RATE MAP
  - PUDE PUBLIC UTILITIES AND/OR DRAINAGE EASEMENT
  - BP BUILDING PERMIT NUMBER
  - CBS CONCRETE BLOCK STRUCTURE
  - CONC CONCRETE
  - EP EDGE OF PAVEMENT
  - BC BACK OF CURB
  - COV COVERED
  - S/W SIDEWALK
  - D/W DRIVEWAY
  - A/C AIR CONDITIONING
  - WM WATER METER
  - RWM REUSE WATER METER
  - FI FIRE HYDRANT
  - WPP WOODEN POWER OR TELEPHONE POLE
  - CPP CONCRETE POWER OR TELEPHONE POLE
  - ELEC ELECTRICAL RISER OR PEDESTAL
  - ELECHH ELECTRICAL HAND-HOLE
  - TEL TELEPHONE RISER OR PEDESTAL
  - TELHH TELEPHONE HAND-HOLE
  - CAVY CABLE TELEVISION RISER OR PEDESTAL
  - CATHH CABLE TELEVISION HAND-HOLE
  - MH MANHOLE
  - SMH SANITARY SEWER MANHOLE
  - CMP CORRUGATED METAL PIPE
  - ACOMP ASPHALT COVERED CMP
  - RCP REINFORCED CONCRETE PIPE
  - DIP DUCTILE IRON PIPE
  - TOE TOE OF BANK
  - CLS CENTERLINE OF SWALE
  - CLF CHAIN LINK FENCE
  - WF WOODEN FENCE
  - HWF WIRE FENCE
  - OHWF OVER HEAD WIRE
  - COV COVERED
  - CH CHORD
  - BRG BEARING
  - ID IDENTIFICATION
  - ALUM ALUMINUM
  - MES MITERED END SECTION
  - ET ELECTRICAL TRANSFORMER
  - PDE PUBLIC DRAINAGE EASEMENT
  - TYP TYPICAL
  - CB CONCRETE BLOCK
  - TBM TOP OF BENCHMARK
  - DBL DOUBLE
- PROPERTY LINE**  
**LOT LINE**  
**RIGHT OF WAY LINE**  
**TOP OF BANK**  
**TOE**  
**FENCE**  
**CENTER LINE**  
**EASEMENT**

- LEGEND:**
- Set 1/2" iron rebar with cap # PSM 6545
  - Found iron rebar, size and cap #
  - Found concrete monument, size and identification
  - Existing spot elevation
  - Denotes concrete areas
  - Denotes asphalt areas
  - ⊗ Denotes Palm Tree
  - ⊙ Denotes Oak Tree
  - ⊙ Denotes White Bark Tree

**SURVEYOR'S NOTES:**

- Unless otherwise noted, only platted easements are shown hereon.
- P.U.D.E. denotes Public Utilities and Drainage Easement. P.U.E. denotes Public Utilities Easement.
- No underground utilities or improvements were located unless otherwise shown.
- Bearings shown hereon are based on the RIGHT OF WAY LINE OF KNOX McRAE DRIVE, being N 89°19'37" E according to the Plat described hereon and may not be a True North Azimuth.
- This site appears to lie within F.I.R.M. Zones "X" & "AE" per Community Panel Number 12009C 0205G, dated 3/17/14.



List Points Tree Report  
Wed Oct 28 12:02:07 2020

PointNo.	Description	PointNo.	Description	PointNo.	Description	PointNo.	Description
1	12" PALM TREE	31	20" PALM TREE	61	12" PALM TREE	91	15" PALM TREE
2	12" PALM TREE	32	18" PALM TREE	62	16" PALM TREE	92	14" PALM TREE
3	14" SUGAR HACKBERRY	33	12" OAK TREE	63	16" PALM TREE	93	14" PALM TREE
4	12" SUGAR HACKBERRY	34	12" DBL OAK TREE	64	18" PALM TREE	94	14" PALM TREE
5	10" OAK TREE	35	10" SUGAR HACKBERRY	65	14" PALM TREE	95	14" PALM TREE
6	16" PALM TREE	36	18" PALM TREE	66	14" PALM TREE	96	14" PALM TREE
7	14" PALM TREE	37	12" PALM TREE	67	12" PALM TREE	97	16" PALM TREE
8	10" OAK TREE	38	16" PALM TREE	68	10" OAK TREE	98	14" PALM TREE
9	10" SUGAR HACKBERRY	39	16" PALM TREE	69	16" PALM TREE	99	16" PALM TREE
10	10" SUGAR HACKBERRY	40	18" OAK TREE	70	14" PALM TREE	100	13" PALM TREE
11	10" SUGAR HACKBERRY	41	12" PALM TREE	71	14" PALM TREE	101	10" PALM TREE
12	14" SUGAR HACKBERRY	42	12" PALM TREE	72	12" DBL PALM TREE	102	14" PALM TREE
13	12" PALM TREE	43	12" PALM TREE	73	14" PALM TREE	103	12" PALM TREE
14	16" PALM TREE	44	12" PALM TREE	74	14" PALM TREE	104	12" PALM TREE
15	9" SUGAR HACKBERRY	45	12" PALM TREE	75	14" PALM TREE	105	16" PALM TREE
16	15" PALM TREE	46	14" PALM TREE	76	14" PALM TREE	106	12" PALM TREE
17	12" PALM TREE	47	12" PALM TREE	77	12" PALM TREE	107	10" PALM TREE
18	8" SUGAR HACKBERRY	48	14" PALM TREE	78	12" PALM TREE	108	12" PALM TREE
19	8" SUGAR HACKBERRY	49	12" OAK TREE	79	16" PALM TREE	109	16" PALM TREE
20	24" OAK TREE	50	8" SUGAR HACKBERRY	80	12" PALM TREE	110	14" PALM TREE
21	12" PALM TREE	51	18" PALM TREE	81	10" PALM TREE	111	15" PALM TREE
22	15" PALM TREE	52	14" PALM TREE	82	12" PALM TREE	112	17" PALM TREE
23	18" PALM TREE	53	16" PALM TREE	83	13" PALM TREE	113	16" PALM TREE
24	12" OAK TREE	54	12" SUGAR HACKBERRY	84	8" PALM TREE	114	14" PALM TREE
25	12" PALM TREE	55	16" PALM TREE	85	14" PALM TREE	115	16" PALM TREE
26	12" OAK TREE	56	14" PALM TREE	86	18" PALM TREE	116	8" PALM TREE
27	12" OAK TREE	57	17" PALM TREE	87	16" PALM TREE	117	14" PALM TREE
28	16" PALM TREE	58	8" PALM TREE	88	14" PALM TREE	118	14" PALM TREE
29	12" PALM TREE	59	36" SUGAR HACKBERRY	89	14" PALM TREE	119	14" PALM TREE
30	8" OAK TREE	60	12" PALM TREE	90	12" PALM TREE	120	13" PALM TREE

**LEGAL DESCRIPTION:**

Beginning at the point of intersection of the West Boundary line of Oakdale Subdivision, Section Two, recorded in Plat Book 20, Page 22 of said Public Records with the North right of way line of Knox McRae Drive and run thence N 00°41'33" W, along said West line, 675.19 feet to the Northwest corner of Oakdale Section Three, recorded in Plat Book 20, Page 23 as recorded in said Public Records of Brevard County, Florida; thence run N 87°20'40" E, along the North line thereof, 339.63 feet to a Point of Intersection with the West line of Parcel 26; thence N 00°56'44" W, along the West line of said Parcel 26, a distance of 1336.31 feet; thence S 89°03'16" W, along the South line of Parcel 6 and Parcel 21.03, a distance of 1341.82 feet; thence S 00°52'30" E, along the East lines of Parcels 44.01, 53, 76, 76.01, 76.03, 76.02 and 76.04; thence N 87°17'14" E, along the North line of Parcel 85, a distance of 327.52 feet; thence S 01°06'44" E, along the East line of the aforesaid Parcel 85, a distance of 514.38 feet to a point lying on the North right of way line of Knox McRae Drive; said point lying on the arc of a circular curve concaved Northerly, having a radius of 765.00 feet; thence run in an Easterly direction along the arc of said curve through a central angle of 10°35'53" an arc distance of 141.50 feet to the point of tangency of said curve; thence N 89°19'37" E, along the North right of way line of Knox McRae Drive, 531.72 feet to the Point of Beginning.

Less and Except a 20' Right of Way more particularly described as follows;

Commence at the North West Corner of Oakdale Section Three as recorded in Plat Book 20, Page 23 of the Public Records of Brevard County, Florida. Thence run N 87°20'40" E, along the North line of aforesaid Oakdale Section Three, a distance of 10.00 feet; Thence run N 00°41'33" W to the Southwest corner of Parcel 6, a distance of 1299.00 feet to the point of beginning of hereon described 20' Right of Way; Thence run N 87°20'40" E to a point on the West Line of Parcel 26; Thence run along said West Line of Parcel 26 N 00°56'44" W, a distance of 20.00 feet; Thence run S 87°20'40" W, a distance of 323.85 feet; Thence run S 00°41'33" E, a distance of 20.00 feet to the point of beginning. Containing 6474.00 Square Feet, (0.148 acres) more or less.

Section 17, Township 22S, Range 35E

BOUNDARY, TOPOGRAPHIC, TREE AND IMPROVEMENT SURVEY

Certified to:

CITY OF TITUSVILLE

I hereby certify that the survey shown hereon is true and correct to the best of my knowledge and belief, based on actual measurements taken in the field. This survey meets the Standards of Practice as set forth by the Florida Board of Professional Land Surveyors in Chapter 54-17, Florida Administrative Code, pursuant to Section 472.027, Florida Statutes.

James Zimmerman  
Professional Land Surveyor No. 6545  
Certificate of Authorization No. 7540  
State of Florida

Drawn by: AR  
Checked by: JZ  
Scale: 1" = 80'  
Date: 7/29/20  
Project: X LAKE BELLA  
DATE REVISIONS

**LAYOUT SERVICES, INC.**  
LAND SURVEYING & MAPPING  
3380 S. PARK AVE. STE 7  
TITUSVILLE, FL 32780  
(321) 529-4484  
layout1@att.net