

**Welcome  
Song Lake  
Annual (General) Association Meeting  
June 6, 2026**



# AGENDA

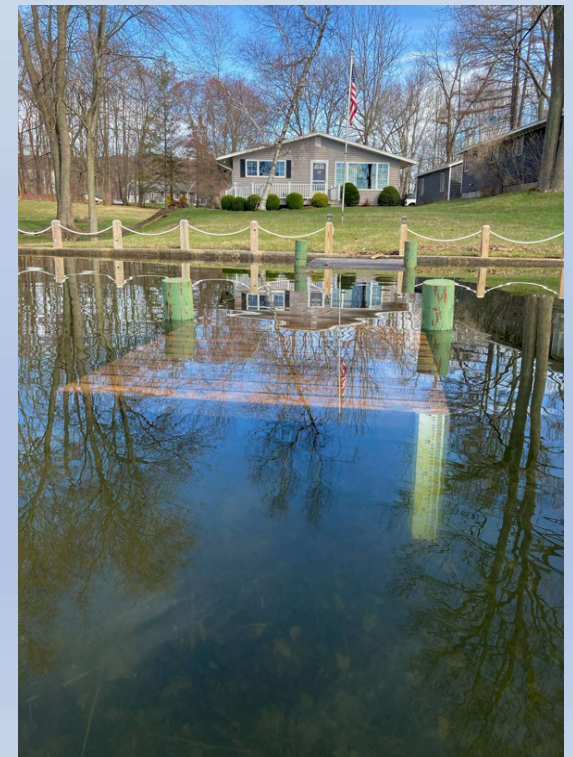
- Welcome
- Count for quorum (15 members)
- Approval of 6/14/25 Annual Meeting minutes
- 2025/26 Highlights
- Update on NYS Wetland regulation changes
- Treasurer's Report and Annual Budget
- Committee updates
- C-OFOKLA Update
- Board review and elections
- Other business and open discussion
- Raffle
- Adjourn



# 2025/26 Highlights – Lake Quality

## CSLAP Team and Watershed Committee:

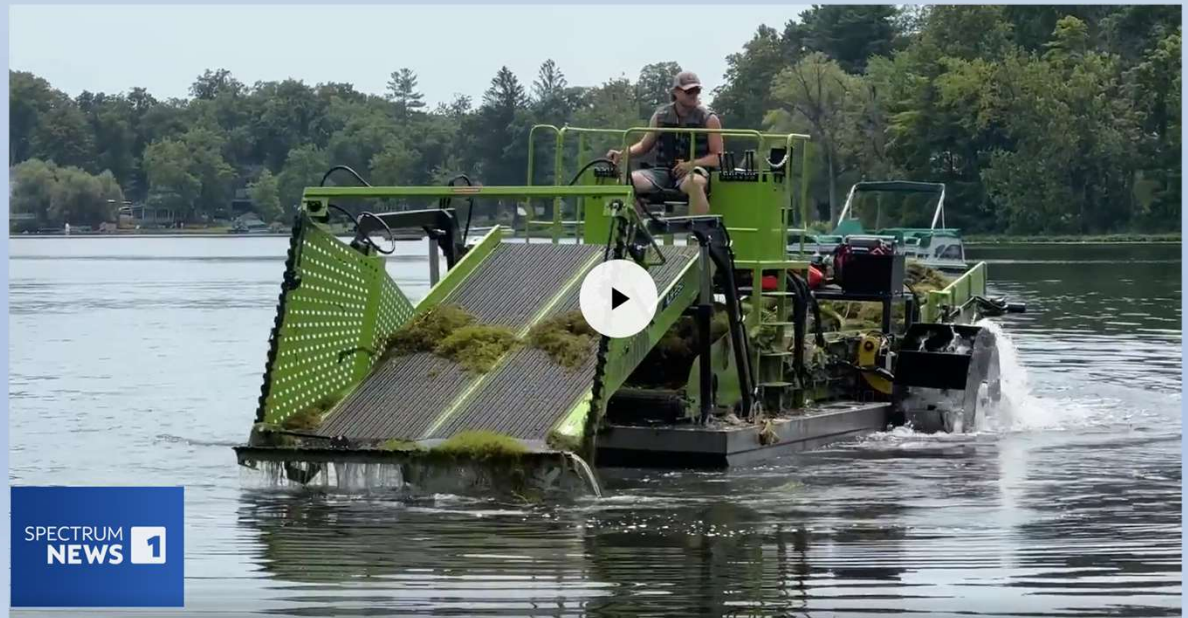
- CSLAP team:
  - Citizens Statewide Lake Assessment Program (CSLAP) team completed 8 rounds of testing in 2025.
  - Removed and installed sampling buoy, shoal markers and water level gauge.



# 2025/26 Highlights – Lake Quality (Cont.)

## CSLAP Team and Watershed Committee:

- CSLAP team:
  - Coordination with Little Bear on a follow-up milfoil survey in May and permitting for potential ProcellaCOR application.
  - Coordination with Cortland County SWCD on potential lake vegetation harvesting.



# 2025/26 Highlights - Recreation Committee

- Purchased and distributed US flags.
- 4<sup>th</sup> of July morning social gathering and afternoon boat parade with participant gifts.
- 1<sup>st</sup> Winter social gathering at Mountain View.
- 2<sup>nd</sup> Winter social gathering at Carol Levine's.



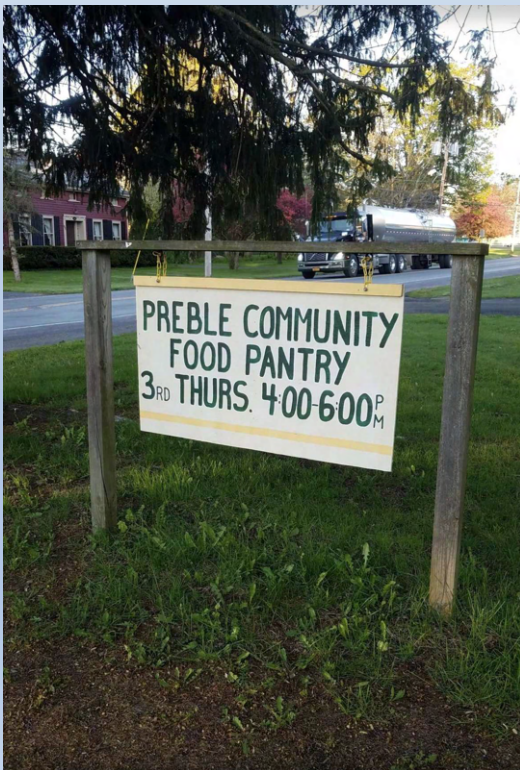
# 2025/26 Highlights – Boat Launch/Removals

- Coordinated with Girl Scout administration to allow boat removals in the fall (7 boats) and launches in the spring (10 boats).
- Coordinated with Cortland County Soil and Water Conservation District to have a representative on site to educate on invasive species and assist in inspections.



# 2025/26 Highlights – Food Pantry

- Committed to donating 50 jars of spaghetti sauce on a monthly basis. **150 jars donated to date.**
- Alternatively monetary donations are also accepted.
- This is an ongoing commitment so continuing support is greatly appreciated.



# NYS Wetland Regulation Changes

In April the New York Supreme Court annulled the rules governing the classification and jurisdictional determination of freshwater wetlands (Freshwater Wetland Regulations) under the 2022 amendments to the NY Freshwater Wetlands Act, which took effect on January 1, 2025.

- ~~Changes to New York State Wetlands regulations went into effect this past January expanding protections to an additional one million acres of wetlands.~~
- ~~The newly adopted regulations define key terms, describe the revised freshwater wetland classification system, present criteria for the identification of Wetlands of Unusual Importance, and describe procedures the DEC uses in making jurisdictional determinations.~~
- ~~The current NYS Freshwater Wetlands Maps will no longer limit DEC regulatory jurisdiction to wetlands depicted on those maps.~~
- ~~Song Lake is specifically listed for attention under Article 24 (presence of an endangered species).~~
- ~~Song Lake is highlighted for significant natural communities (probably lake cress).~~

# Treasurer's Report

## Song Lake Property Owners Association Annual Meeting June 6, 2026

### Treasurer's Report

#### General Fund:

Carried over from June 14, 2025

Membership Fund

\*includes membership dues, water quality & tent donations

**\$11,130.78**

#### Deposits:

Membership dues, water quality & tent donations,

4,797.72

Annual Meeting raffle proceeds

**Total Inflow: \$4,797.72**

#### Expenditures:

US Postal Service PO Box Annual Fee

\$84.00

Erie Insurance- policy renewal

\$569.00

Girl Scouts of NYPENN donation for boat launch

\$200.00

COFOKLA dues

\$200

Septic Rebate

\$25

SLPOA Notecards

\$55.72

Welcome Bag Items for new residents

\$46.60

GoDaddy- Marketing

\$220.19

GoDaddy- Site Renewal

\$90.76

**Total Outflow: \$1,491.27**

**Actual Account Balance as of 6/6/2026 \$14,437.23**

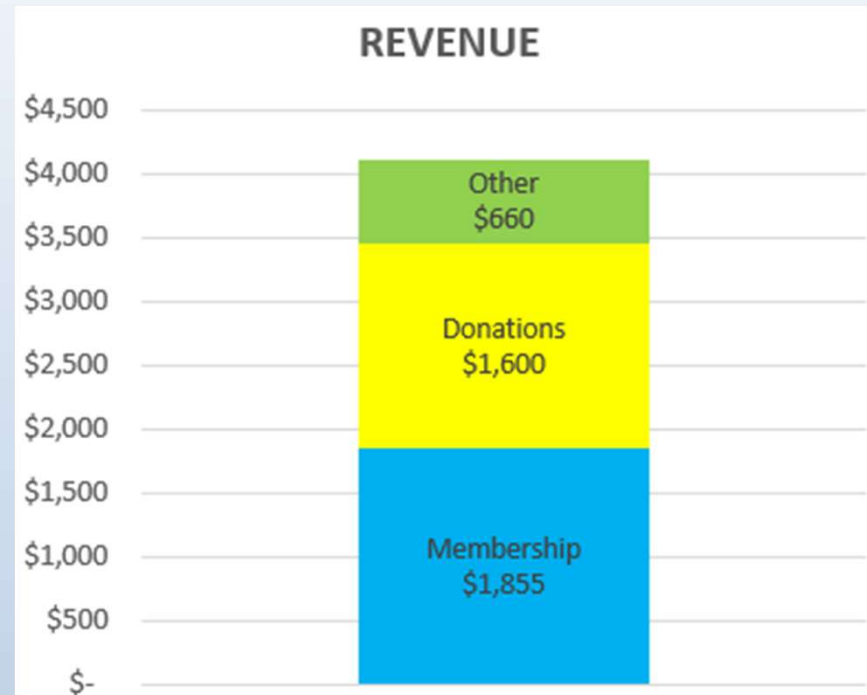
**Last Bank Balance as of 5/31/2026 \$14,437.23**



- Membership renewals starting to come in.
- Can use everyone's help to encourage other residents to join membership
- Please consider making donations to our general fund to sustain our various activities and programs

# Budget

2026/2027 Fiscal Year Budget	
Revenue	Amount
Membership	\$ 1,855
Member Donations	\$ 1,600
Annual Meeting Raffle	\$ 300
Boat Launch Donations	\$ 360
Reserves (pulled to balance budget)	\$ -
<b>Total Revenue</b>	<b>\$ 4,115</b>
<b>Expenses</b>	
Social Event #1 (winter)	\$ 450
Social Event #2 (Carols)	\$ -
Social Event #3 (4th of July)	\$ -
Social Event #4 (fall)	\$ 450
Website	\$ 340
Admin supplies	\$ 250
Flags	\$ 150
NYSDEC Permitting (one time cost)	\$ 500
Girl Scout Boat Launch Donation	\$ 360
Insurance	\$ 600
C-OFOKLA Annual Dues	\$ 200
NYSFOLA	\$ 125
Annual Meeting Expenses	\$ 250
CSLAP Program	\$ 200
PO Box	\$ 90
Septic System Pumping Reimburse	\$ 75
Transfer to Reserves	\$ -
Welcome Packages	\$ 75
<b>Total Expenses</b>	<b>\$ 4,115</b>
<b>Reserves</b>	<b>\$ 10,322</b>
<b>Budget + Reserves</b>	<b>\$ 14,437</b>
<b>Bank Balance (3/31/2026)</b>	<b>\$ 14,437</b>



- Over 36% of revenue is from generous member donations (21 of 53).
- **Donations key to balancing the budget.**
- Board is considering increasing membership from \$35/year to \$50/year.



# Song Lake Watershed & Environment Committee

Reasons to Celebrate ~ Reasons for Concern

Song Lake Property Owners Association Meeting

June, 2026

## Water Quality and CSLAP

**Citizens Statewide Lake Assessment Program**  
– Managed through cooperative agreement  
between NYS DEC and NYSFOLA  
[www.nysfola.org/what-is-cslap](http://www.nysfola.org/what-is-cslap)

**Water chemistry is done in the lab at Upstate**

### **Freshwater Institute**

Phosphorus

Nitrogen

pH

Chlorophyll-a

Conductivity

Color

Ammonia

Calcium

Chloride



**On the boat we:**  
measure temperature  
determine water clarity  
identify weeds

look for and document any irregularities.

Dissolved Oxygen is measured when we have the meter  
to work with.

**The lake is a complex, living system.**

## Stuff we can see....

### Why It Matters

Clear water supports recreation, but clarity doesn't show underlying problems.

Invasives can spread quickly and permanently alter lake ecology. Most AIS are carried into a lake by humans through recreational use.

A few invasive plants are carried by wildlife but mussels generally do not survive when carried by waterfowl.

### Indicator

### 2025 Snapshot

#### Water Clarity

Generally good; lake remained suitable for swimming and recreation

#### Aquatic Invasive Species

Risk is high

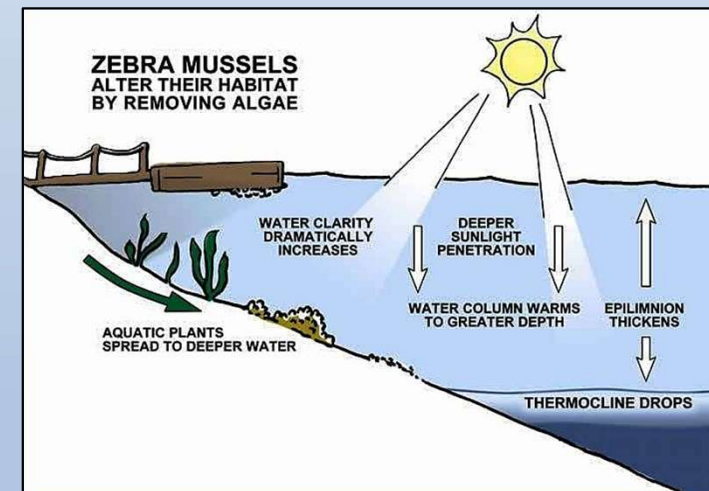
#### (AIS) Risk



Eurasian watermilfoil



Zebra mussels were introduced around 2016 and killed the native pearly mussels on Song Lake



More sun = more photosynthesis = more plants!!

Zebra mussels make the water CLEARER NOT CLEANER

## Indicator

HABs - Blue-Green Algae and other Cyanobacteria

Shoreline HABs

## 2025 Snapshot

Present and increasingly detected

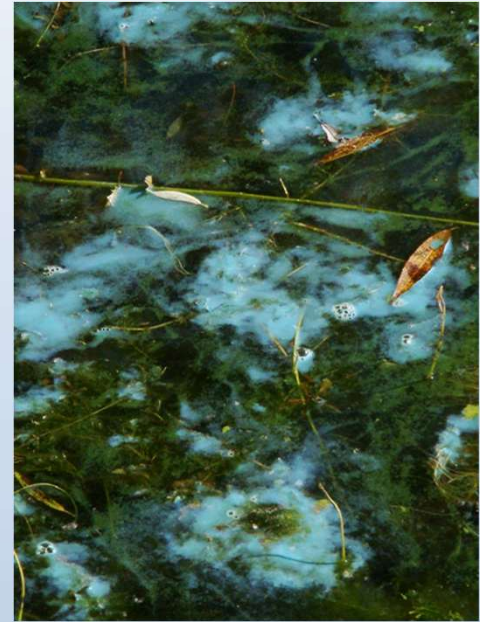
Periodic blooms remain possible

## Why It Matters

Some cyanobacteria are more obvious - blue green and scummy along shorelines.

Others are less obvious as they show green or purple dots or suspended masses in the water

Blooms can occur even when open water looks clear. These shoreline Harmful Algal Blooms (HABs) are more concentrated and more likely to create toxic conditions. All HABs have the potential to carry cyanobacteria which are harmful to humans and pets.



All of these HAB events were on Song Lake

## Stuff we can't see...

### Indicator 2025 Snapshot

### Why It Matters

**Nutrients (Phosphorus)** Moderate levels typical of a **mesotrophic lake**

Excess phosphorus fuels both nuisance algae and potentially toxic Harmful Algal Blooms (HABs or cyanobacteria) which are harmful to humans and pets.

**Internal Loading** Continued evidence of nutrients building up below the surface. This is persistent and increasing.

Nutrients stored in lake sediments recycle back into the water during warm weather, storms and boat activity encouraging the growth of weeds and algae.

**Trophic status** is a simple way to describe how productive a lake is—meaning how much plant and algae growth it supports.

It is based mainly on water clarity, nutrient levels like phosphorus and algae levels (chlorophyll-a).



Images: UW-Extension Lakes Program

## Indicator 2025 Snapshot

## Why It Matters

### Water Temperature

Warm summer surface water.  
Warming waters are concern across the state for all lakes.

Warmer water favors algae growth and reduces oxygen availability. Dissolved oxygen in water is as essential for aquatic life as it is for humans in the air we breathe.

### Retention Time (1.1 years)

Water remains in lake a relatively long time

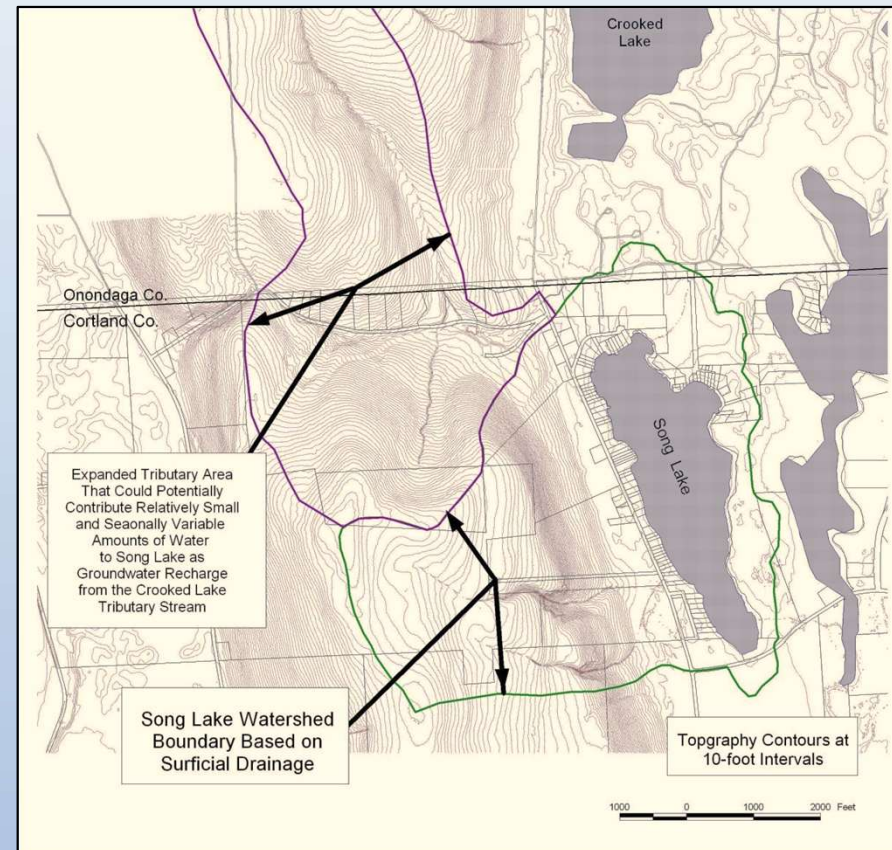
Nutrients and pollutants stay in the lake longer and are slower to flush out

### PFAS & Microplastics

Not tested in CSLAP report but a growing statewide concern.

(Microplastics were found in Song Lake in 2019 through a special National Science Foundation Grant)

Long-lasting pollutants may accumulate overtime. Entirely from human activity but may enter through stormwater runoff or deposition from the air and rain.



788 Acre watershed  
110 acre lake

## Indicator

## 2025 Snapshot

## Why It Matters

### Shoreline / Watershed Runoff

Remains an active concern with increasing pressure from storm frequencies and intensity of human development.

Runoff carries nutrients, sediment, salt, plastics, and pollutants.

### Development / Carrying Capacity

Lake continues to support recreation and homes, but increasing pressures are a concern.

Overdevelopment can overwhelm the lake's ability to absorb impacts.



# The Good, the Bad and the Ugly

**Good**



Lakecress



**Bad**



**Ugly**



## Bottom Line

Song Lake remains a relatively healthy lake, but long-term monitoring shows growing pressure from nutrient buildup, warming temperatures, harmful algal blooms, emerging pollutants, and cumulative shoreline impacts.

The most effective protection continues to be:

- **Prevent more AIS - Clean, Drain & Dry boats - [NYS Finger Lakes Prism](#)**
- **Healthy shoreline buffers - Finger Lakes - [Lake Friendly Living Program \(Cayuga Lake\)](#)**
- **Regular septic maintenance - [SLPOA Septic Maintenance Program](#)**
- **Reducing runoff and protection from flooding - [Kettle Lakes Association Storm Water Plan](#)**
- **Careful growth that respects the lake's carrying capacity - [Town of Preble Comprehensive Plan](#)**



Everyday actions help protect water quality, recreation, habitat, and property values for everyone who enjoys Song Lake.



Kettle Lakes Update  
See the MURAL!!!



Come to the Conference

## CNY Regional NYSFOLA Conference

*The Health of Our Lakes:*  
Science, Threats, and  
Solutions

Save the Date

September 11, 2026

**Location:** The Stars Reception Hall at the  
Pavilion, Dwyer Memorial Park  
6759 Little York Lake Rd, Preble, NY



# Board Review and Elections

## Current Board

### Officers – 2 years

- President – Tom Abrams (2026/2027)
- Vice President – Tarki L. Heath (2026/2027)
- Treasurer - Martha Quinn (2028/2027)
- Secretary – Mónica Abrams (2028/2027)

### Board of Directors (BOD) - 3 Years

- Tom Santurri (2027)
- Jeff Merrill (2027)
- Carol Levine (2028)
- Rachel Musiker (2026)
- Linda Metz (2028)
- Scott Collier (2027)

## Proposed Slate

### Officers

- NA

### BOD

- Tom Abrams (2029)
- Tarki Heath (2029)
- Rachel Musiker (2029)

# Other Business and Open Discussion

## Weed Harvesting Update

- 8 residents have expressed interest
- Permitting – Soil and Water in ongoing discussions on permitting
- Schedule – Anticipate mid- to late July; subject to change
- Cost – about \$400/resident; **payment required upfront**

## Milfoil

- Little Bear conducted a lake vegetation survey on 5/27/26 as a follow-up to sitings of milfoil in a couple of areas last year.
- Draft report was provided on 6/4/26.

# Other Business and Open Discussion (cont.)

## Preble Food Pantry

- 50 jars of 24 oz. spaghetti sauce a month. The organizers and the patrons continue to be very appreciative!
- Ongoing monthly effort, your continued support (monetary donation or purchase of spaghetti sauce) is crucial.
- Drop off in bin at Carol Levine's (1872 Fulmer Road) or call/text Cathy Merrill (315-729-7020) to make other arrangements.

## Membership Renewal

- Time to renew and please consider an added donation.

## Facebook – Song Lake POA

- Scott Collier did a great job setting up our new Facebook page. Follow and start posting pictures and information relevant to the Lake and surrounding communities.
- Private site that requires answering questions. Email us if you have any difficulties registering.

# Other Business and Open Discussion (cont.)

## Website - [www.SongLakePOA.org](http://www.SongLakePOA.org)

- Jeff Merrill continues to do a fantastic job keeping the site up to date.
- A wealth of information, including Board meeting information and available lake data so make sure to periodically check it out.

## Communications

- Emails, Facebook, website
- Mailed annual newsletter?

# Raffle

*A huge shoutout* to the generous local establishments that supported this event and the raffle. Please be sure to support and thank them.

Tully Market



Bloomin' Cup



# Working Together to Keep Song Lake (our home) Beautiful



*Tarki L Heath*

**Thank You!!**

# Other Business and Open Discussion

## Milfoil

- Survey findings
  - All native species in great health
  - Hybrid milfoil found at 9 of 40 survey points (trace to sparse).
  - Presence likely from seeds produced from sexual reproduction.
- Little Bear Recommendations
  - 7 treatment areas proposed (8 acres).
  - Complete permitting.
  - Total cost of \$9,100.

