

**NXG**  
SOLUTIONS



*Product Catalog*


**WWW.NXGS.IN**

**NXG'S WIDE RANGE OF COST-EFFECTIVE PRODUCTS INCLUDES 3 IN 1 SENSOR FAUCETS/RECESS PANELS, SENSOR-BASED WCS, AEROSOL DISPENSERS, AIR PURIFIERS, AIR CURTAINS HAND DRYERS & MUCH MORE.**

**With 25 years of experience, NxG's Washroom Automation has been at the forefront of innovation in washroom automation since 2021, delivering cutting-edge solutions that enhance hygiene, convenience, and sustainability.**

**Established with a vision to revolutionize public and commercial restrooms, we have consistently pushed the boundaries of technology by introducing state-of-the-art products.**

**[WWW.NXGS.IN](http://WWW.NXGS.IN)**



**Our dedication to quality, reliability, and customer satisfaction has earned us a trusted reputation across various industries, from hospitality and healthcare to education and corporate facilities. With a quarter-century of experience, NxG continues to lead the way in transforming washroom experiences, making them more hygienic, efficient, and eco-friendly.**

**As we look to the future, our commitment to innovation and excellence remains unwavering, ensuring that our solutions not only meet today's needs but anticipate tomorrow's demands.**

**[WWW.NXGS.IN](http://WWW.NXGS.IN)**

# **BEHIND MIRROR CABINETS**

## **NXG BMS 1**



- SS 304
- Sided Pulldown Sliding Rail
- Bottom Snap Lock System
- Soap Dispenser LED Indicator
- Red Twinkling for Low Battery / Soap

## **NXG BMS 2**



- Automatic Soap Dispenser
- Paper Dispenser
- Soap Dispenser LED Indicator
- Red light when in use & Twinkling for Low Battery

## **NXG BMP**



- Holds N/Z-fold Paper Napkins
- Capacity: 300 or 700 Sheets



# BEHIND MIRROR CABINETS



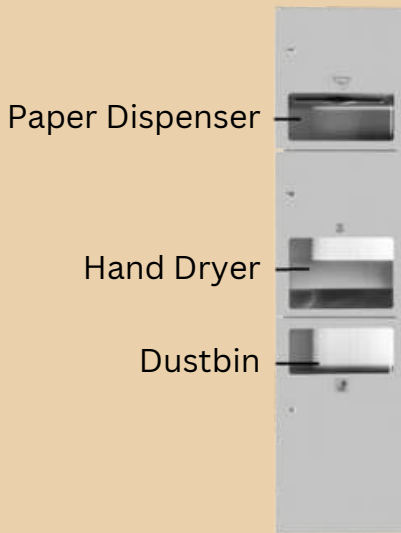
## **NXG BMS**

- SS 304
- Sided Pulldown Sliding Rail
- Bottom Snap Lock System
- Soap Dispenser LED Indicator
- Red Twinkling for Low Battery / Soap



**Our Behind-Mirror Cabinets will provide a seamless and sophisticated look for your elite and prestigious projects. Dimensions, Volumes of Soap Dispensers & Tissue Paper Dispenser Capacity, everything can be customized according to your needs and project requirements.**

# RECESS PANELS



## **NXG RPS 03**

- **Concealed/Recessed Type**
- **Built-in Paper Dispensers**
- **Waste Receptacle**
- **Automatic Hand Dryer (3in1)**
- **Dimensions: W310 x L1650 x D160 mm**
- **Recommended Height: 255-460mm from Floor Level**



## **NXG RPS 02**

- **Concealed/Recessed Type**
- **Built-in Paper Dispensers**
- **Waste Receptacle (2in1)**
- **Concealed Type W310 x L1200 x D140 mm**



## **NXG RPS 04**

- **With Waste Receptable**
- **2 Tissue Paper rolls**
- **SS304**

\*Can be modified according to your needs.

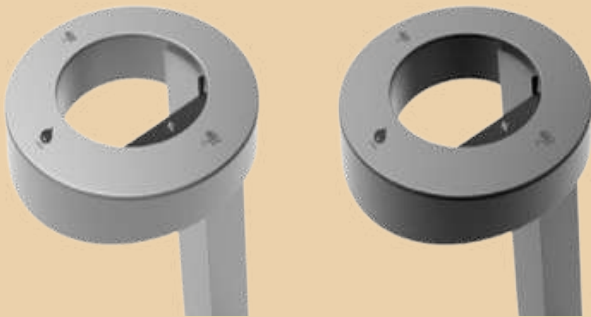
# WASH STATIONS

## NXG WS 1



- Drying Time: 11 seconds
- Dryer Sound: MIN 58.8 dB
- Water Flow Rate: Max. 2.2GPM/8.3LPM
- Soap Dispenser Capacity: 1,500 ml
- Soap- Liquid: 1 CC – Foam: 0.7 CC – Spray: 1 CC

## NXG WS 2



- Dryer Noise: 70 Db ( HEPA Filter )
- Pressure:1.89 l/m (3 Bar)
- Capacity: 2L
- Material:Anodised Aluminium/ABS/Brass

## NXG WS 3



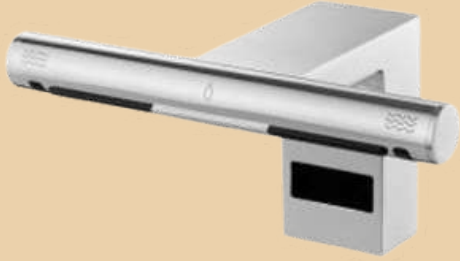
- Material: SS Chrome Plated Brass
- Noise: 65 dB
- Water Pressure Range: 1 – 8 Bar
- Capacity of Soap Dispenser: 3000ml

\*Color options available

[WWW.NXGS.IN](http://WWW.NXGS.IN)

# WASH STATIONS

## **NXG TD (TAP N DRY)**



- **Body Material:** Chrome Plated Brass
- **Motor:** Brushless Digital Motor
- **RPM:** 40,000
- **Air Speed:** 95m/s
- **Noise In Db:** 58.8
- **Filter:** HEPA (H13)
- **Drying Time:** 10-15s
- **Water Pressure Range:** 1 –6 Bar

## **NXG ST 1**



- **Water Pressure :** 1 – 6 bar
- **Temperature Range:** 5–65°C
- **Inlet Connection:** G1 /2"
- **Power Supply:** AC100–240V
- **Pump Type:** Foam / Liquid
- **Bottle Capacity:** 1000ML
- **Material:** Chrome Plated Brass

## **NXG ST 2**



- **Installation:** Deck Mounted
- **Material:** Chrome Plating – 60% Brass Body
- **Power Supply:** AC100–240V
- **Pump Type:** Foam / Liquid
- **Bottle Capacity:** 1000ML (Ceramic Cartridge)



# WASH STATIONS

## NXG ST 3



- **Material :** Brass with Chrome
- **Power Supply :** 220V-50HZ
- **Rated Power :** Stand by  $\leq 2W$ ; Working  $\leq 5W$
- **Bottle Capacity:** 1000ML
- **Inlet Connection:** G1 /2"
- **Water Pressure Required:** 0.05-0.8 Mpa

## NXG ST 4



- **Material:** Chrome Plating Brass Body
- **Power Supply:** AC100-240V
- **Pump Type:** Foam / Liquid
- **Bottle Capacity:** 3000ML
- **Suitable Soap Viscosity:** 1-17cps
- **Suitable Soap PH:** 5-9
- **Water Pipe Diameter:** G1/2"
- **Water Pressure:** 0.05-0.8MPa

## NXG ST 5



- **Soap Bottle:** 3000mL
- **Water Flow Rate:** 0.05-0.8MPa
- **Solenoid Cartridge**
- **NEO PERL Aerator**
- **Chrome Plated Brass**

# WASH STATIONS

## **NXG TD 2**



- Brushless Motor
- Drying Time: 15-20s
- working temperature: 1-55°C
- Voltage: 220-240VAC, 50/60Hz
- Air speed: 80m/s
- Startup Method: Touch-Free Infrared



**NXG'S WASHROOM AUTOMATION SERIES WILL TURN YOUR REGULAR RESTROOMS INTO SOPHISTICATED & ELEGANT RESTROOMS AT AFFORDABLE PRICES.**

**OUR PRODUCTS ARE SIMPLY A CLASS APART EXPERIENCE!**

\*Color options available

[WWW.NXGS.IN](http://WWW.NXGS.IN)

# JET HAND DRYER

## NXG JHD 1



- **Material:** SS 304 + SS Back Plate
- **Voltage:** 220–240V
- **Frequency:** 50/60Hz
- **Motor Power:** 800W RPM: 21000
- **Air Speed:** 100m/s
- **Noise Level In Db(at 2m):** 72

## NXG JHD 2



- **Material:** ABS with Antimicrobial Coating & Flame Resistant
- **Voltage:** 220–240V
- **Frequency:** 50/60Hz
- **Motor Power:** 800W
- **RPM:** 21,000
- **Noise Level In Db(at 2m):** 72

## NXG JHD 3



- **Material:** ABS with Antimicrobial Coating & Flame Resistant
- **Voltage:** 220–240V
- **Motor Power:** 1200W
- **RPM:** 20000
- **Speed:** 95m/s
- **Drying Time:** 8–10Sec
- **Noise Level In Db(at 2m):** 65

\*Color options available

[WWW.NXGS.IN](http://WWW.NXGS.IN)

# JET HAND DRYER

## **NXG JHD 4**



- **Material:** ABS
- **Color:** White/Grey
- **Voltage power:** 220/1800w
- **Features:** UV sterilization/water level alarm light/2-side filtration HEPA
- **Motor Speed:** 32000rpm

## **NXG JHD 5**



- **Material:** ABS
- **Power Voltage:** AC110 OR AC220V 50/60Hz 7.5-8.2A
- **RPM:** 20,000/22,000
- **AirSpeed:** 95m/s
- **Drying time:** 10~12 seconds
- **Time protector:** 20s
- **Decibel level:** 65~75db

## **NXG JHD 6**



- **Voltage:** AC220-240V
- **Motor:** Brushless Motor
- **Rated Input Power:** 1650-2050 W
- **Motor Power:** 700W
- **Dimension:** 300\*220\*685mm
- **Air Speed:** 95m/s

# JET HAND DRYER

## NXG JHD 7



- Material: SS 304
- Motor type: Brushless
- Motor speed: 20000 pm
- Voltage : 220V-240V, AC 50/60Hz
- Rated power: 1800W
- Wind speed: 100m/s



ADD A TOUCH OF SOPHISTICATION AND ELEGANCE  
WITH OUR **JET HAND DRYERS**, WHICH ARE  
**AFFORDABLE** WITH TOP SPECIFICATIONS AND  
OFFER **BEST-IN-CLASS FEATURES**.

\*Color options available

[WWW.NXGS.IN](http://WWW.NXGS.IN)



# HAND DRYERS

## NXG HD 1



- **Material: SS304**
- **Voltage: 220V – 240V**
- **ECO Air Sensor**
- **Hot & Cold Switch: Yes**
- **With HEPA Filter**
- **R.P.M : 30000**
- **Drying Time: 12 Seconds**

## NXG HD 2



- **Material : SS304**
- **Voltage(~1):220V-240V ,1000W**
- **Voltage(~2):110V-120V ,1000W**
- **Air Temperature: 40°C**
- **Drying Time: 10 to 12 Seconds**
- **With HEPA Filter**
- **Speed Stepless Control**
- **ECO Air Sensor**

## NXG HD 3



- **Material: SS304**
- **Cover Thickness: 1.2mm**
- **Voltage:220-240V**
- **Frequency: 50/60Hz**
- **Motor Power: 600-800W**
- **R.P.M:24,000**
- **Hot & Cold Switch: Yes**
- **Noise Level In Db: 70**

**\*With UV Sterilization & Double HEPA Filter**

*\*Color options available*

**WWW.NXGS.IN**

# HAND DRYERS

## NXG HD 4



- **Material:** SS 304
- **Voltage:** 220-240V
- **Rated Power:** 1200W
- **Drying Time:** 8-10Sec
- **Auto Cut Off:** >30s

## NXG HD 5



- **Material:** SS304
- **Voltage:** 220V/50-60Hz
- **Rated Power:** 1200W
- **Noise Level :** 75 dB
- **R.P.M :** 20,000

## NXG HD 6



- **Material:** SS 304
- **Voltage:** 220-240V
- **Rated Power:** 1150W
- **Speed:** 60m/s or 105m/s  
(Adjustable)
- **Drying Time:** 10-15Sec
- **Auto Cut Off:** >45s

\*With UV Sterilization & HEPA Filter

\*Color options available

[WWW.NXGS.IN](http://WWW.NXGS.IN)

# HAND DRYERS



## NXG HD 7

- Material: SS 304
- Voltage: 220-240VAC 50/60Hz
- Rated power: 1420W
- UVC light power: 20W
- Motor Speed/Power: 31000rpm/600W
- Surface: Satin/ Polished/ Paint



## NXG HD 8

- Material: SS304
- Brush Motor with 6 years warranty
- Drying Time: 8-10 Secs
- Applicable area: 11-20m<sup>2</sup>
- Rated Power: 1350 W
- RPM: 20,000



## NXG HD 9

- Material: SS304
- Brush Motor with 6 years warranty
- Drying Time: 8-10 Secs
- Applicable area: 11-20m<sup>2</sup>
- Rated Power: 1350 W
- RPM: 20,000

\*With UV Sterilization & HEPA Filter

\*Color options available

[WWW.NXGS.IN](http://WWW.NXGS.IN)

# SLIM HAND DRYERS

## NXG HD 10



- **Material:** SS 304
- **Thickness :** 1.5mm(SS Back Plate)
- **RPM:** 50,000
- **Voltage:** 220-240V
- **Motor Power:** 300W
- **Hot & Cold Switch:** Yes
- **Noise Level In Db:** 79

**\*With UV Sterilization & Double HEPA Filter**

## NXG HD 11



- **Material:** SS 304 (Brushed)
- **Cover Thickness:** 1.5mm
- **Voltage:** 220-240V
- **Frequency:** 50/60Hz
- **Total Power:** 400-950W
- **Motor Power:** 400W
- **RPM:** 35,000
- **Hot & Cold Switch:** Yes
- **Noise Level In Db:** 74

## NXG HD 12



- **Material:** SS 304
- **Voltage:** 220V/50-60Hz
- **Rated Power:** 1000W
- **Motor Power:** 550W
- **Air Velocity:** 288km/h
- **R.P.M:** 30000 variable speed
- **Surface :** Brushed & Bright & Painting

**\*With HEPA Filter & UV Lamp**

**\*Color options available**

**WWW.NXGS.IN**

# HAND DRYERS

## NXG HD 13



- **Body Material:** ABS
- **Total Power:** 950W
- **Motor Power:** 400W
- **RPM:** 30000
- **Air Speed:** 85m/s
- **Noise Level In Db(at 2m):** 72

## NXG HD 14



- **Body Material:** ABS
- **Total Power:** 950W
- **Motor Power:** 400W
- **RPM:** 30000
- **Air Speed:** 85m/s
- **Noise Level In Db:** 72

## NXG HD 15



- **Body Material:** ABS
- **Total Power:** 950W
- **Motor Power:** 400W
- **RPM:** 30000
- **Air Speed:** 85m/s
- **Noise Level In Db:** 72

\*Color options available

[WWW.NXGS.IN](http://WWW.NXGS.IN)



# HAND DRYERS

## **NXG HD 16**



- **Sensor:** Yes
- **Voltage (V):** 110V–130V
- **Rated Power (W):** 1150–1350W
- **Power Source:** Electric
- **Sensing Type:** Touch-free Infrared
- **Material:** Stainless Steel
- **Drying Efficiency:** 10–12 Seconds
- **Air Filtration:** Sponge filter

## **NXG HD 17**



- **Body Material:** ABS
- **Total Power:** 1200W
- **Motor Power:** 700W
- **RPM:** 30000
- **Air Speed:** 90m/s
- **Noise Level In Db(at 2m):** 72

## **NXG HD 18**



- **Material:** SS304
- **Voltage:** 220V/50–60Hz
- **Rated Power:** 1000W
- **Motor Power:** 140W
- **Heating element:** 860W
- **Air Velocity:** 288km/h
- **R.P.M :** 110000

# HAND DRYERS

## **NXG HD 19**



- **Material: SS 316**
- **Life: 20 Years**
- **Warranty: 5 Years**
- **Fit & Forget**
- **Less Carbon Footprint**

## **NXG HD 20**



- **Material: SS 316**
- **Life: 20 Years**
- **Warranty: 5 Years**
- **Fit & Forget**
- **Less Carbon Footprint**



\*Color options available

[WWW.NXGS.IN](http://WWW.NXGS.IN)

# HIGH TRAFFIC HAND DRYERS

5 YEAR WARRANTY



**HTD 1**



**HTD 2**



**HTD 3**



**HTD 4**



**HTD 5**



**HTD 6**

\*Color options available

[WWW.NXGS.IN](http://WWW.NXGS.IN)

# HIGH TRAFFIC HAND DRYERS

- Voltage (~1): 220V-240V 50/60Hz, 1800W
- Voltage (~2): 110V-120V 60Hz, 1800W
- Hot/Cold Air Switchable
- Brushless Motor
- Air Temperature: 45°C [ 113°F ]
- Drying Time: 8 to 10 Seconds
- Protection Level: IP23
- Electrical Isolation: CLASS I
- Sensor Range: 5-15CM
- Material: Stainless Steel 304
- Visible Service Blue LED
- 60 Seconds Automatic Shut Off
- Sound & Speed Stepless Control
- HEPA Filter: Yes ( Chargeable )
- Over 25°C Heat Element Off
- 5 Year Warranty
- Fit & Forget

# THERMOSTATIC FAUCETS

## **NXG TF 1**



- **Installation: Deck Mounted**
- **Material: Chrome Plated Brass Body**
- **Power Supply: DC 6V**
- **Inlet & Outlet Pipe Dia: DN 15 G1/2"**
- **Water Pressure: 0.05–0.6MPa**
- **Power Consumption: 0.5 MW**
- **Ambient Temperature: 0.1–55 °C**

## **NXG TF 2**



- **Installation: Deck Mounted**
- **Material: Chrome Plated Brass Body**
- **Power Supply: DC 6V**
- **Water Pipe Diameter-Inlet & Outlet Pipe: DN 15 G1/2"**
- **Water Pressure: 0.05MPa–0.6MPa**
- **Power Consumption: 0.5 MW**
- **Ambient Temperature: 0.1–55 °C**

## **NXG TF 3**



- **Faucet Mount: Single Hole**
- **Type: Deck Mounted**
- **Make: 60 % Brass**
- **Water Pressure: 0.1~1.6MPa**

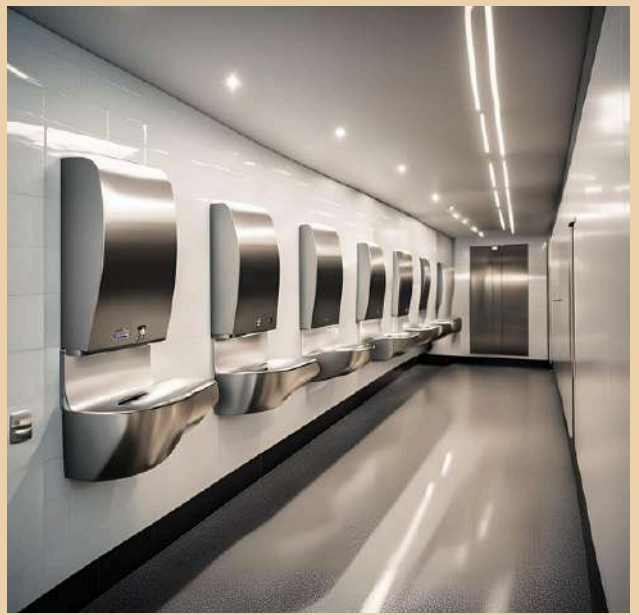
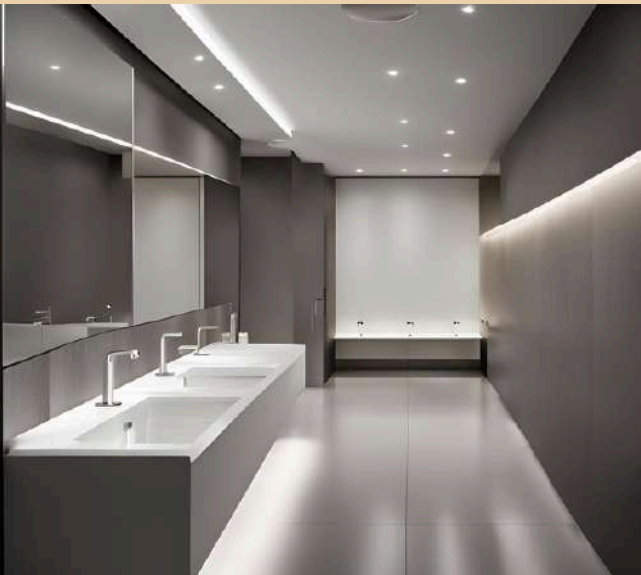


# FAUCETS

## NXG TF 4



- **Warranty: 5 years**
- **Material: Brass**
- **Feature: Thermostatic Knob**
- **Faucet Mount: Single Hole**
- **Installation Type: Deck Mounted**
- **Number of Handles: Single Handle**

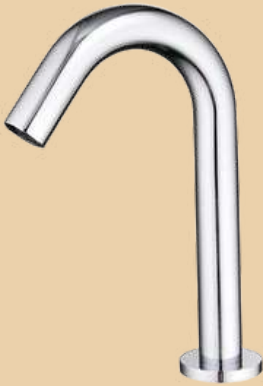


\*Color options available

[WWW.NXGS.IN](http://WWW.NXGS.IN)

# SENSOR FAUCETS

## NXG SF 1



- **Material:** Chrome Plated Brass
- **Sleek Mouth Motion Sensor**
- **Water Pressure:** 0.02 MPa–0.8 Mpa
- **Inlet:** G1/2"

## NXG SF 2



- **Material:** Chrome Plated Brass Metal
- **Shape** Swan Neck
- **Water Pressure:** 0.02 MPa–0.8 Mpa
- **Inlet:** G1/2" (Dn15)
- **150mm Adjustable Sensing Range** with water-saving aerator

## NXG SF 3



- **Faucet Mount:** Single Hole
- **Installation Type:** Deck Mounted
- **Make:** Brass
- **Water Pressure:** 0.02 MPa–0.8 Mpa
- **Inlet:** G1/2" (Dn15)

# SENSOR FAUCETS

## NXG SF 4



- **Material:** Chrome Plated Brass Body
- **External Point Source:** AC:110v-240V,50Hz-60Hz / DC: 4 AA Alkaline Batteries
- **Applicable Water Pressure:** 0.05-0.7Mpa
- **Inlet:** G1/2", G3/8"
- **Applicable Water Temperature:** 0.1-85 °C (Ambient Temp. 0.1-60°C)
- **Effluent Discharge:** Max Water Output 8L/min (dynamic water pressure 0.3MPa)

## NXG SF 5



- **Material:** ABS with Brass Metal Spout
- **Power Supply:** DC 6V
- **Inlet & Outlet Pipe Dia:** DN 15 G1/2"
- **Water Pressure:** 0.02-0.8 Mpa

## NXG SF 6



- **Material :** ABS with Brass Metal Spout
- **Power Supply:** DC 6V
- **Inlet & Outlet Pipe Dia:** DN 15 G1/2"
- **Water Pressure:** 0.02-0.8 Mpa

# FAUCETS

## NXG F1



- 4 Aerators
- H&C Knob)
- Installation: Deck Mounted
- Material: Chrome Plating - 60% Brass Body
- Power Supply: AC100-240V
- Function: Hot and Cold Water
- Colour: Chrome, Matte Black, White, Gold Rose Gold

## NXG F2



- Material: Brass
- Surface: Chrome
- Single Hole Deck Mount

## NXG F3



- Material: Brass
- Surface: Chrome
- Single Hole
- Deck Mount

# URINALS

## NXG U 1



- Easy to Install
- Dimension : L245 X W300 X H400 MM
- Fixing Wall Mounted Outlet
- Universal Urinal Bracket
- Urinal Outlet Accessories
- Fine finishing for an elegant and aesthetic look

## NXG U 2



- Electronic Induction Type: Ac Type
- Accessories: Pipe Adapting Piece
- Spud Location: Back Spud
- Size: 360\*380\*740
- Water Saving

## NXG U 3



- Design Style: Modern
- Spud Location: Top Spud
- Urinal Type: Wall-Mounted Urinals
- Color: White, Other color as your requirement
- Packing: 5 Layer Corrugated Paper
- Size: 420X380X740mm



# URINALS

## **NXG U 4**



- **Flushing Method: Gravity Flushing**
- **Design Style: Modern**
- **Electronic Induction Type: Ac Type**
- **Liquid Medicine: Included**
- **Accessories: Partition Board**
- **Spud Location: Back Spud**
- **Urinal Type: Standing Urinals**



\*Color options available

[WWW.NXGS.IN](http://WWW.NXGS.IN)

# BIDETS

## NXG WC 1



- **Description: Automatic Self-Clean Toilet Seat**
- **Feature Air-drying: Heated Seat**
- **Advanced Function: Seat Heating**
- **Flushing Flowrate: 3.0–6.0L**
- **Remote Control: Included**
- **Working Voltage: 220V, 100V~110V**
- **High-Resolution Frameless LED Display**

# BIDETS

## NXG WC 2



- UV sterilisation, Aromatherapy features
  - Buffer Cover plate: Yes
  - Flushing Flowrate: 3/6L
  - Flushing Button Type: Upper-pressing Two-end Type
  - Flushing Method: Gravity Flushing
  - Toilet Bowl Shape: Elongated
  - Color: Customer's Request
  - Feature Air-drying, Heated Seat
  - Installation Type: Wall Mounted
  - Microwave sending to open the LID
- Flushing Method: Gravity Flushing, Flushing Flowrate: 3.0-6.0L
  - Advanced Function: Nozzle Self-cleaning, Female Washing, Seat Heating, Movable Nozzle Cleaning, Warm Air Drying, Instant Hot Type, Remote Control, Washing, Water Pressure Adjustment, Water Temperature Adjustment, Night Light, Multispeed adjustable warm drying
  - Working Voltage: 220V, 200 ~ 240V, 100V~110V, Seat temperature adjustment
  - Smart one-piece toilet, Hidden bubble guard, Nano PP cotton filter element to purify, Water massage gentle cleaning for women, Toilet cleaner retention port for cleaner flushing, A minimalist knob, One-click memory button for men and women
  - High permeability LED display, Kick Automatic loop flush

## NXG WC 3



- Flushing Flowrate: 3/6L
- Flushing Button Type: Upper-pressing Two-end Type
- Installation Type: Wall Mounted
- Feature Dual-Flush
- Flushing Method: Gravity Flushing
- Toilet Bowl Shape: Elongated
- Color: Customer's Request
- Installation: Wall-Hung Mounted Installation

\*Design on demand

\*Color options available

[WWW.NXGS.IN](http://WWW.NXGS.IN)

# BIDETS

## NXG WC 4



- **Advanced Function: Automatic Deodorization**
- **Flushing Flowrate: 3.0-6.0L**
- **Flushing Button Type: Side-pressing One-part Form**
- **Warranty: 3 years**
- **Color: Customized**
- **Size: 695\*490\*540mm**



## NXG WC 5

- **Mount: Floor**
- **Flush Sensor: Yes**
- **Material: Ceramic**
- **Warranty: 5 Years**



\*Design on demand

\*Color options available

[WWW.NXGS.IN](http://WWW.NXGS.IN)

# URINAL FLUSHERS

## NXG UF 1



- Concealed Wall Mount
- AC + DC + Push Button
- Water Pressure: 0.03 MPa–0.8 Mpa
- Inlet/Outlet: G1 "
- Single Chip Microcomputer Design
- Two-Stage Flushing

## NXG UF 2



- DC+ Push Button
- Water Pressure: 0.01 MPa–0.8 Mpa
- Inlet/Outlet: 40mm
- Size: 120x120 mm
- Voluntary Flush in 24 hr
- Water Consumption Tracking

## NXG UF 3



- Type: DC & AC
- Flush Valve Type: Sensor
- Material: Brass
- Application: WC/ toilet

# URINAL FLUSHERS



## **NXG UF 4**

- 15mm (1/2") SS Flange
- Battery pack (Inbuilt)
- Brass Flow Control
- Remote (User remote - on demand)



**HP, BANGALORE**

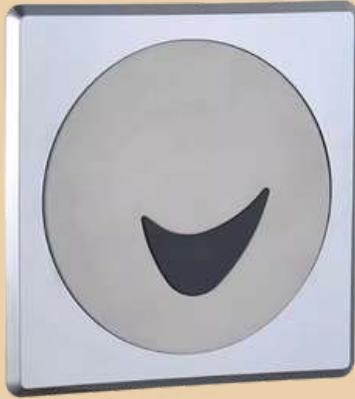
\*Color options available

[WWW.NXGS.IN](http://WWW.NXGS.IN)



# URINAL FLUSHERS

## **NXG UF 5**



- Flush Valve Type: Sensor
- Application: Urinal
- Type: Flush Valves
- Material: 304 SS panel+ Plastic Frame
- Special Features: Concealed, Touchless, Water Saving
- Power Supply: DC:6V (4xAA Alkaline batteries)

## **NXG UF 6**



- Flush Valve Type: Sensor
- Sensor Range: 60–85 cm adjustable
- Power supply: AC,DC,AC+DC
- Battery life: 108000 flushes
- System protection timer: 12/24 hours
- Flush: 1/2 flushes optional
- Surface finished: Polish,Brush,Nickle



\*Color options available

[WWW.NXGS.IN](http://WWW.NXGS.IN)



# SOAP DISPENSERS

## NXG SD 1



- Working: Sensor
- Capacity: 1000mL
- Power Supply: 4 pcs AA Battery or AC/DC power
- Logo Printing: Available

## NXG SD 2



- Voltage: DC9V(6 AA batteries)
- Battery life: 40000 times
- Color: Polished / Brushed / Black / White
- Volume: 800 ml
- Induction Distance: 5-9CM
- Product Size: 100\*110\*220mm

## NXG SD 3



- Product size: 70\*120\*175mm
- Capacity: 225ml
- Product weight: 0.4kg
- Startup mode: Infrared sensor
- Induction distance: 8-10cm
- Power supply mode: Type C charging
- Liquid output 0.8/1.4/2ml 0.3/0.6/0.9ml

\*Color options available

[WWW.NXGS.IN](http://WWW.NXGS.IN)

# SOAP DISPENSERS



## **NXG SD 4**

- **Material:** Stainless Steel
- **Item Weight:** 2.42 pounds
- **Soap Type:** Liquid Gel
- **Batteries:** 4 AA Batteries
- **Capacity:** < 1 L



## **NXG SD 5**

- **Main Material:** ABS
- **Capacity:** 550 ML
- **Cartridge Life Time:** 500,000 cycles
- **Size:** 22\*12\*7CM
- **Power supply:** Built-in 1200mAh Rechargeable Battery
- **Colors:** White & Black



## **NXG SD 6**

- **Main Material:** ABS
- **Capacity:** 1000 ML
- **Drop Function:** Liquid, Foam and Spray
- **Color:** White, Black, Gold
- **Working:** Manual

# TISSUE PAPER DISPENSERS



## **NXG TPD 1 (AUTOMATIC)**

- **Cover Material:** Stainless Steel 304 cover + ABS Plastic bracket & ends
- **Tissue Type:** Roll Towel Paper
- **Roll Towel Capacity:** Max. Diameter 190MM [ 7-31/64" ]
- **Roll Towel Width:** Max. 200MM[7-7/8" ]
- **Motor Type [Dispensing Towel]:** DC Motor, 2,500 RPM, 4.8 W
- **Motor Type [Cutting Towel]:** DC Motor, 1225 RPM, 3.6 W



## **NXG TPD 2 (AUTOMATIC)**

- **Material:** ABS
- **Tissue Type:** Roll Towel Paper
- **Roll Towel Capacity:** Max. Diameter 190MM [ 7-31/64" ]
- **Roll Towel Width:** Max. 200MM[7-7/8"]
- **Motor Type [ Dispensing Towel ]:** DC Motor, 2,500 RPM, 4.8 W
- **Motor Type [ Cutting Towel ]:** DC Motor, 1225 RPM, 3.6 W



## **NXG TPD 3**

- **Main Material:** SS 304
- **AC 110-240V**
- **4 Size D Batteries**
- **Paper Roll Size : D 190 X 200 W mm**

\*Color options available

[WWW.NXGS.IN](http://WWW.NXGS.IN)

# TISSUE PAPER DISPENSERS

## NXG TPD 1 (AUTOMATIC)

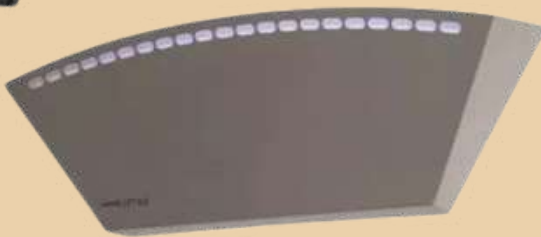


- Sensing distance: 0-15cm
- Installation: Wall mounted
- Paper size: 20/30/40cm in length, 20-21 in width
- Shape: Circular

AIR CURTAINS



INSECTICUTOR



ROBOTIC  
GLASS  
CLEANER



ROBOTIC VACUUM CLEANER



SMART UVC TOWEL STERILIZING RACK



BREATHING APPARATUS

## OTHER PRODUCTS

\*Color options available

[WWW.NXGS.IN](http://WWW.NXGS.IN)

# WASH BASINS

## NXG WB 1



- **Warranty: Lifetime**
- **Bathroom Accessory: Drainer**
- **Capacity 9L**
- **Basin Shape: Rectangle**
- **Faucet Mount: Single Hole**

## NXG WB 2



- **Basin Shape: Rectangular**
- **Faucet Mount: No Hole**
- **Special Application: Hand washing**
- **Size: 19"X15"X5" / 485\*375\*130mm**
- **Feature: Without faucet**

## NXG WB 3



- **Processing: Glaze Spraying**
- **Basin Shape: Circular**
- **Faucet Mount: Single Hole**
- **Stone Type: Ceramic**
- **Material Quality: Ceramic, porcelain**
- **Size: 360x360x125mm**

# DUSTBINS



## **NXG D 1**

- **Batteries Required: Yes**
- **Material: Stainless Steel**
- **Capacity: 50L**
- **Shape: Rectangular**
- **Power Supply: Battery powered**
- **Control Mode: Sensor**



## **NXG D 2**

- **Batteries Required: 4 AA Batteries**
- **Life:**
- **Material: Stainless Steel**
- **Capacity: 60L**
- **Shape: Rectangular**
- **Power Supply: Battery powered**
- **Control Mode: Sensor**



## **NXG D 3**

- **Batteries Required: Yes**
- **Material: SS 304**
- **Capacity: 6L**
- **Shape: Round**

# AEROSOL DISPENSERS

## **NXG AD 1**



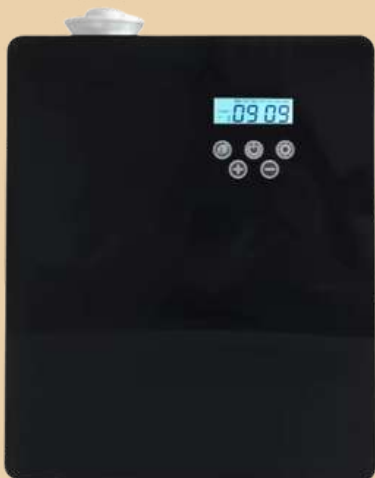
- **Power Source:** Battery
- **Recommended Room Size:** > 400 sq. ft
- **Voltage (V):** 5
- **Consumption:** 0.4ml/hr at maximum
- **Oil Bottle capacity:** 100ml

## **NXG AD 2**



- **Product name:** Aerosol Dispenser
- **Color:** White or Customized
- **Size:** 210\*85\*76 mm
- **Material:** ABS
- **Refill Size:** 110 ml / 270 ml
- **Power Supply:** D alkaline battery or 5V/1A Type-C USB

## **NXG AD 3**



- **Color:** Black White
- **Material:** Metal
- **Accessories:** User Manual + Adaptor
- **Capacity:** 150mL



# AIR PURIFIERS



## **NXG AP 1**

- **Material:** ABS body.
- **Button:** Touch screen button.
- **Motor:** DC Brushless motor
- **Speed:** 10 fan speed.
- **Rotation:** 71 ° Body sway.
- **Coverage:** 870 Sq. Ft.
- **Noise:** 40 dB



## **NXG AP 2**

- **Functions:** Hot + Cool + Composite
- **filter + Plasma Sterilizer)**
- **Motor:** DC brushless motor
- **Screen:** LCD touch screen
- **Speed:** 1-12 Speed Fan
- **Coverage:** 690 Sq. Ft.
- **Rotation:** 55° Wide Oscillation
- **Noise:** 40 dB



## **NXG AP 3**

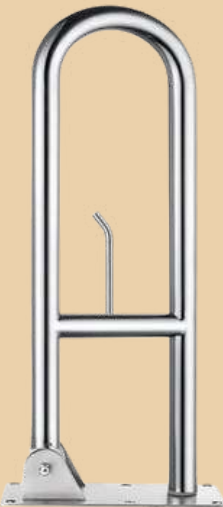
- **Coverage Area:** 1300 Sq. Ft.
- **Featured Function:** UV sterilization, Humidify, Aromatherapy
- **Noise Level** 30-69dB
- **Filter:** 5 stages, Pre-filter+ UV+ PM0.5 HEPA + Activated Carbon+ h12 hepa

# GRAB BARS



## **NXG GB 1**

- **Grab Bar Size: 45 X 45cm**
- **Material: SS 304**
- **Color: Customizable**



## **NXG GB 2**

- **Grab Bar Size: 300/ 400/ 450/ 600mm or Customized**
- **Material: SS 304**
- **Color: Silver, Black, or Customized**



## **NXG GB 3**

- **Grab Bar Size: 45 X 45cm**
- **Material: SS 304 Application Washroom Bathroom Toilet**
- **Size: 450\*450mm or customizable**

## OTHER PRODUCTS



**SHOE SHINING MACHINES  
WITH SOLE CLEANERS**



**SHOE COVER  
MACHINES**



**BABY DIAPER  
CHANGING  
STATION**



**DIAPER CHANGING  
STATION WITH CHILD  
PROTECTION**



**WET & DRY  
VACUUM  
CLEANER**



**FLOOR SCRUBBING MACHINE**



**HARD FLOOR CARPET  
VACUUM CLEANER**

# DYSON'S RANGE

## V



- **Material: Plastic**
- **Motor specification: 1,000 W**
- **Drying Time: 12 seconds**
- **Sound power level: 79 dB(A)**
- **Lock-out period: 30 seconds**
- **Airspeed at aperture: 690 km/h**

## 9KJ



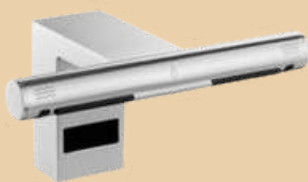
- **Material: SS 304**
- **Drying time: 10-12 seconds**
- **Peak Noise level: 79dB**
- **Power: 900 Watts- 650 Watts-**
- **Voltage: 220-240V 50/60 Hz**

## TAP DRIER



- **Noise Level: 81dB**
- **Drying Time: 14 seconds**
- **Frequency: 50-60hz**
- **Motor switching rate: 5,400 per second**

# COMPARISON



NXG TAP N DRY



DYSON W+D

Material	Brass	Steel
Noise Level	58.8 dB	81 dB
Colour Options	Gold, Black & Silver	Grey
Price	INR 84,850	INR 1,27,000



HD 1



DYSON V

Material	SS 304	Plastic
Noise Level	65 dB	79 dB
Colour Options	Gold, Black & Silver	White & Nickel
Price	INR 47,250	INR 64,850

# OUR CLIENTS



**PARAS MALHOTRA**

📞: 9999342223

✉: [paras@nxgs.in](mailto:paras@nxgs.in)

**KAMAL MALHOTRA**

📞: 9911897731

✉: [kamal@nxgs.in](mailto:kamal@nxgs.in)

**KARISHMA YADAV**

📞: 9818725076

✉: [karishma@nxgs.in](mailto:karishma@nxgs.in)

IF THERE'S ANY PRODUCT THAT'S NOT THERE THEN  
DO LET US KNOW SO THAT WE CAN HELP YOU WITH  
THE SAME

[WWW.NXGS.IN](http://WWW.NXGS.IN)