



# PRODUCT CATALOG

[WWW.NXGS.IN](http://WWW.NXGS.IN)

# OUR CLIENTS



**THE EXCEPTIONAL SYNERGY OF PRICE, WARRANTY, AND UNCOMPROMISING QUALITY OFFERED BY NXG'S WASHROOM AUTOMATION PRODUCTS IS UNPARALLELED—AN EXCLUSIVITY YOU WON'T FIND ELSEWHERE.**

**NXG STANDS ALONE IN DELIVERING A DISTINCTIVE BLEND OF PREMIUM QUALITY, COMPETITIVE PRICING, AND INDUSTRY-LEADING WARRANTY—AN UNMATCHED VALUE PROPOSITION IN THE REALM OF WASHROOM AUTOMATION.**

**IF THERE'S ANY PRODUCT THAT'S NOT THERE, THEN DO LET US KNOW SO THAT WE CAN HELP YOU WITH THE SAME**

**WWW.NXGS.IN**



## Contents

- Page 4-17 Hand Dryers
- Page 18 & 19 Behind Mirror Cabinets
- Page 20 Recess Panels
- Page 21-25 Wash Stations
- Page 25-29 Thermostatic Faucets
- Page 30 & 31 Urinals
- Page 32-34 Bidets/WC
- Page 35-37 Urinal Flushers
- Page 39 & 40 Soap Dispensers
- Page 42 & 43 Tissue Paper Dispensers
- Page 44 Wash Basins
- Page 45 Dustbins & Diaper Stations
- Page 46 Aerosol Dispensers
- Page 47 Air Purifiers
- Page 48 Grab Bars
- Page 49 Dyson Hand Dryers
- Page 50 Comparisons

# HAND DRYERS (5 YEAR WARRANTY)



[WWW.NXGS.IN](http://WWW.NXGS.IN)

# HAND DRYERS

## NXG HD 1



- **Material: SS304**
- **Voltage: 220V – 240V**
- **ECO Air Sensor**
- **Hot & Cold Switch: Yes**
- **With HEPA Filter**
- **R.P.M : 30000**
- **Drying Time: 12 Seconds**

## NXG HD 2



- **Material : SS304**
- **Voltage(~1):220V-240V ,1000W**
- **Voltage(~2):110V-120V, 1000W**
- **Air Temperature: 40°C**
- **Drying Time: 10 to 12 Seconds**
- **With HEPA Filter**
- **Speed Stepless Control**
- **ECO Air Sensor**

## NXG HD 3



- **Material: SS304**
- **UV Light & HEPA Filter**
- **Voltage:220-240V**
- **Motor Power: 600- 800W**
- **R.P.M:24,000**
- **Hot & Cold Switch: Yes**
- **Noise Level In Db: 70**

\*Color options available

# HAND DRYERS

## NXG HD 4



- **Material: SS 304**
- **Voltage: 220-240V**
- **Rated Power: 1200W**
- **Drying Time: 8-10Sec**
- **Auto Cut Off: >30s**

## NXG HD 5



- **Material: SS304**
- **Voltage: 220V/50-60Hz**
- **Rated Power: 1200W**
- **Noise Level : 75 dB**
- **R.P.M : 20,000**

## NXG HD 6



- **Material: SS 304**
- **Voltage: 220-240V**
- **Rated Power: 1150W**
- **Speed: 60m/s or 105m/s (Adjustable)**
- **Drying Time: 10-15Sec**
- **Auto Cut Off: >45s**

\*Color options available

\*With UV Sterilization & HEPA Filter

# HAND DRYERS

## NXG HD 7



- **Material:** SS 304
- **Voltage:** 220-240VAC 50/60Hz
- **Rated power:** 1420W
- **UVC light power:** 20W
- **Motor Speed/Power:** 31000rpm/600W
- **Surface:** Satin/ Polished/ Paint

## NXG HD 8



- **Material:** SS304
- **Brush Motor with 6 years warranty**
- **Drying Time:** 8-10 Secs
- **Applicable area:** 11-20m<sup>2</sup>
- **Rated Power:** 1350 W
- **RPM:** 20,000

## NXG HD 9



- **Material:** SS304
- **Brush Motor with 6 years warranty**
- **Drying Time:** 8-10 Secs
- **Applicable area:** 11-20m<sup>2</sup>
- **Rated Power:** 1350 W
- **RPM:** 20,000

\*Color options available

**WWW.NXGS.IN**

# SLIM HAND DRYERS

## NXG HD 10



- **Material: SS 304**
- **Thickness : 1.5mm(SS Back Plate)**
- **RPM: 50,000**
- **Voltage: 220-240V**
- **Motor Power: 300W**
- **Hot & Cold Switch: Yes**
- **Noise Level In Db: 79**

**\*With UV Sterilization & Double HEPA Filter**

## NXG HD 11



- **Material: SS 304 (Brushed)**
- **Cover Thickness: 1.5mm**
- **Voltage: 220-240V**
- **Frequency: 50/60Hz**
- **Total Power: 400-950W**
- **Motor Power: 400W**
- **RPM: 35,000**
- **Hot & Cold Switch: Yes**
- **Noise Level In Db: 74**

## NXG HD 12



- **Material: SS 304**
- **Voltage: 220V/50-60Hz**
- **Rated Power: 1000W**
- **Motor Power: 550W**
- **Air Velocity: 288km/h**
- **R.P.M: 30000 variable speed**
- **Surface :Brushed & Bright & Painting**

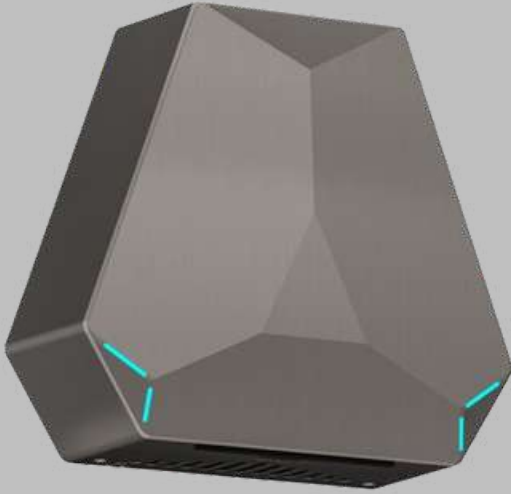
\*Color options available

**WWW.NXGS.IN**



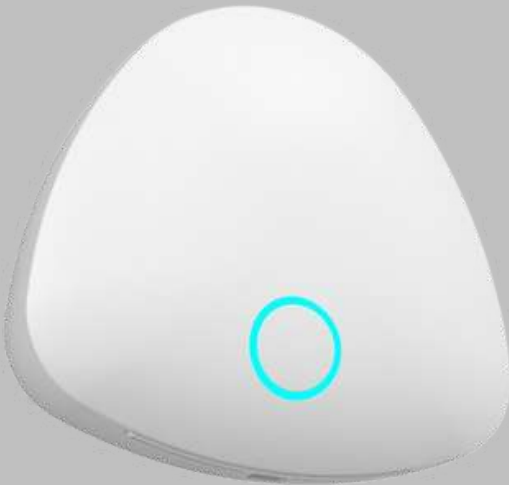
# HAND DRYERS

## NXG HD 13



- **Body Material: ABS**
- **Total Power: 950W**
- **Motor Power: 400W**
- **RPM: 30000**
- **Air Speed: 85m/s**
- **Noise Level In Db(at 2m): 72**

## NXG HD 14



- **Body Material: ABS**
- **Total Power: 950W**
- **Motor Power: 400W**
- **RPM: 30000**
- **Air Speed: 85m/s**
- **Noise Level In Db: 72**

## NXG HD 15



- **Body Material: ABS**
- **Total Power: 950W**
- **Motor Power: 400W**
- **RPM: 30000**
- **Air Speed: 85m/s**
- **Noise Level In Db: 72**

\*Color options available

[WWW.NXGS.IN](http://WWW.NXGS.IN)

# HAND DRYERS

## NXG HD 16



- **Material: Stainless Steel**
- **Sensor: Yes**
- **Rated Power (W): 1350W**
- **Power Source: Electric**
- **Sensing Type: Touch-free Infrared**
- **Drying Efficiency: 10-12 Seconds**
- **Air Filtration: Sponge filter**

## NXG HD 17



- **Body Material: ABS**
- **Total Power: 1200W**
- **Motor Power: 700W**
- **RPM: 30000**
- **Air Speed: 90m/s**
- **Noise Level In Db(at 2m): 72**

## NXG HD 18



- **Material: SS304**
- **Voltage: 220V/50-60Hz**
- **Rated Power: 1000W**
- **Brushless Motor**
- **HEPA Filter & UVC Lamp**
- **Air Velocity: 288km/h**
- **R.P.M : 110000**

\*Color options available

**WWW.NXGS.IN**

# HAND DRYERS

## NXG HD 19



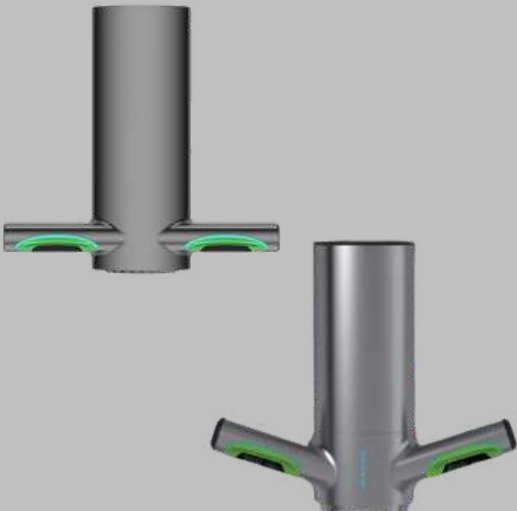
- **Material: SS 316**
- **Life: 20 Years**
- **Warranty: 5 Years**
- **Fit & Forget**
- **Less Carbon Footprint**

## NXG HD 20



- **Material: SS 316**
- **Life: 20 Years**
- **Warranty: 5 Years**
- **Fit & Forget**
- **Less Carbon Footprint**

## NXG HD 21T & HD 21V



- **Body Material: HDPE & SS316**
- **Total Power:1300W**
- **RPM:30000**
- **HEPA Filter & Air Sensor**
- **Noise Level In Db: 59**

\*Color options available

**WWW.NXGS.IN**

# HIGH TRAFFIC HAND DRYERS

5 YEAR WARRANTY



**HTD 1**



**HTD 2**



**HTD 3**



**HTD 4**



**HTD 5**



**HTD 6**

\*Color options available

[WWW.NXGS.IN](http://WWW.NXGS.IN)



# **HIGH TRAFFIC HAND DRYERS**

- **Voltage (~1): 220V-240V, 1800W**
- **Voltage (~2): 110V-120V, 1800W**
- **Hot/Cold Air Switchable**
- **Brushless Motor**
- **Air Temperature: 45°C [ 113°F ]**
- **Drying Time: 8 to 10 Seconds**
- **Protection Level: IP23**
- **Electrical Isolation: CLASS I**
- **Sensor Range: 5- 15 cm**
- **Material: Stainless Steel 304**
- **Visible Service Blue LED**
- **60 Seconds Automatic Shut Off**
- **Sound & Speed Stepless Control**
- **HEPA Filter: Yes ( Chargeable )**
- **Over 25°C Heat Element Off**
- **5-Year Warranty**
- **Fit & Forget**

# JET HAND DRYERS



[WWW.NXGS.IN](http://WWW.NXGS.IN)

# **JET HAND DRYER**



## **NXG JHD 1**

- **Material: SS 304 + SS Back Plate**
- **Voltage: 220–240V**
- **Frequency: 50/60Hz**
- **Motor Power: 800W**
- **RPM: 21000**
- **Air Speed: 100m/s**
- **Noise Level In Db(at 2m): 72**



## **NXG JHD 2**

- **Material: ABS with Antimicrobial Coating & Flame Resistant**
- **Voltage: 220–240V**
- **Frequency: 50/60Hz**
- **Motor Power: 800W**
- **RPM: 21,000**
- **Noise Level In Db(at 2m): 72**



## **NXG JHD 3**

- **Material: ABS with Antimicrobial Coating & Flame Resistant**
- **Voltage: 220–240V**
- **Motor Power: 1200W**
- **RPM: 20000**
- **Speed: 95m/s**
- **Drying Time: 8–10Sec**
- **Noise Level In Db(at 2m): 65**

\*Color options available

# JET HAND DRYER

## NXG JHD 4



- **Material:** ABS
- **Power:** 1800 W
- **Features:** UV sterilization/water level alarm light/2-side
- **Filter:** HEPA
- **Motor Speed:** 32000 rpm
- **With UV Lamp**

## NXG JHD 5



- **Material:** ABS
- **Brushless Motor :** 1650 W
- **RPM:** 20,000/22,000
- **AirSpeed:** 95m/s
- **Drying time:** 10~12 seconds
- **Time protector:** 20s
- **Decibel level:** 65~75db
- **Water Tank :** 800 mL

## NXG JHD 6



- **Material:** ABS
- **Voltage:** AC220-240V
- **Motor:** Brushless Motor
- **Rated Input Power:** 1650-2050 W
- **Motor Power:** 700W

\*Color options available

[WWW.NXGS.IN](http://WWW.NXGS.IN)



# JET HAND DRYER

## NXG JHD 7



- **Material: SS 304**
- **Motor type: Brushless**
- **Motor speed: 20000 pm**
- **Voltage : 220V-240V, AC 50/60Hz**
- **Rated power: 1800W**
- **Wind speed: 100m/s**



ADD A TOUCH OF SOPHISTICATION AND ELEGANCE  
WITH OUR **JET HAND DRYERS**, YOU WILL NOT GET  
SUCH A **WARRANTY, GUARANTEE & QUALITY**  
ACROSS INDIA.

\*Color options available

**WWW.NXGS.IN**

# **BEHIND MIRROR CABINETS**

## **NXG BMS 1**



- SS 304
- Sided Pulldown Sliding Rail
- Bottom Snap Lock System
- Soap Dispenser LED Indicator
- Red Twinkling for Low Battery / Soap

## **NXG BMS 2**



- Automatic Soap Dispenser
- Paper Dispenser
- Soap Dispenser LED Indicator
- Red light when in use & Twinkling for Low Battery

## **NXG BMP**



- Holds N/Z-fold Paper Napkins
- Capacity: 300 or 700 Sheets

**WWW.NXGS.IN**

# **BEHIND MIRROR CABINETS**



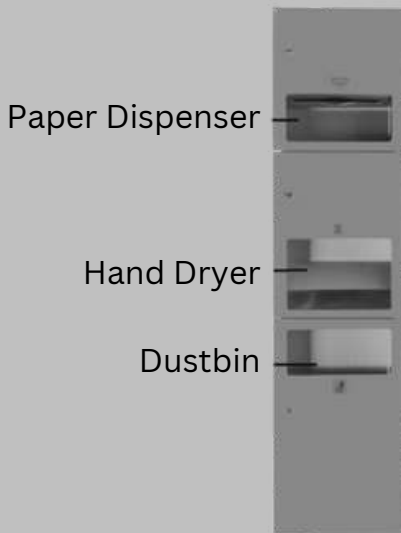
## **NXG BMS**

- SS 304
- Sided Pulldown Sliding Rail
- Bottom Snap Lock System
- Soap Dispenser LED Indicator
- Red Twinkling for Low Battery / Soap



**Our Behind-Mirror Cabinets will provide a seamless and sophisticated look for your elite and prestigious projects. Dimensions, Volumes of Soap Dispensers & Tissue Paper Dispenser Capacity, everything can be customized according to your needs and project requirements.**

# RECESS PANELS



Paper Dispenser

Hand Dryer

Dustbin

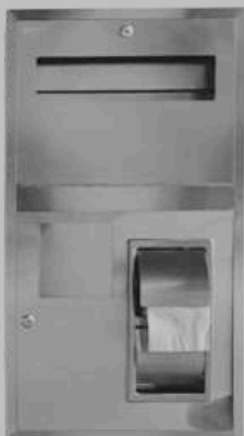
## NXG RPS 03

- **Concealed/Recessed Type**
- **Built-in Paper Dispensers**
- **Waste Receptacle**
- **Automatic Hand Dryer (3in1)**
- **Dimensions: W310 x L1650 x D160 mm**
- **Recommended Height: 255-460mm from Floor Level**



## NXG RPS 02

- **Concealed/Recessed Type**
- **Built-in Paper Dispensers**
- **Waste Receptacle (2in1)**
- **Concealed Type W310 x L1200 x D140 mm**



## NXG RPS 04

- **With Waste Receptable**
- **2 Tissue Paper rolls**
- **SS304**

\*Can be modified according to your needs.



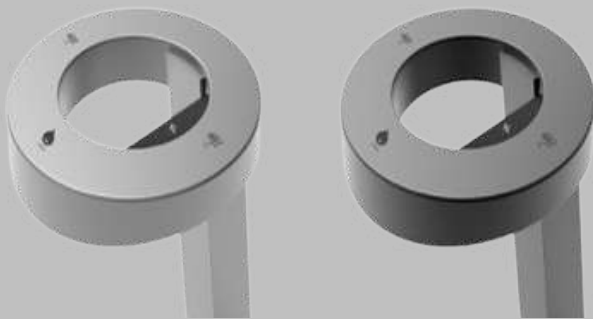
# WASH STATIONS

## NXG WS 1



- **Drying Time:** 11 seconds
- **Dryer Sound:** MIN 58.8 dB
- **Water Flow Rate:** Max. 2.2GPM/8.3LPM
- **Soap Dispenser Capacity:** 1,500 ml
- **Soap- Liquid:** 1 CC – **Foam:** 0.7 CC – **Spray:** 1 CC

## NXG WS 2



- **Dryer Noise:** 70 Db ( HEPA Filter )
- **Pressure:**1.89 l/m (3 Bar)
- **Capacity:** 2L
- **Material:**Anodised Aluminium/ABS/Brass

## NXG WS 3



- **Material:** SS Chrome Plated Brass
- **Noise:** 65 dB
- **Water Pressure Range:** 1 – 8 Bar
- **Capacity of Soap Dispenser:** 3000ml

\*Color options available

**WWW.NXGS.IN**

# WASH STATIONS

## NXG WS 4



- **Body Material:** Chrome Plated Brass
- **Motor:** Brushless Digital Motor
- **RPM:** 40,000
- **Air Speed:** 95m/s
- **Noise In Db:** 58.8
- **Filter:** HEPA (H13)
- **Drying Time:** 10-15s
- **Water Pressure Range:** 1 – 6 Bar

## NXG WS 5



- **Water Pressure :** 1 – 6 bar
- **Temperature Range:** 5–65°C
- **Inlet Connection:** G1 /2"
- **Power Supply:** AC100–240V
- **Pump Type:** Foam / Liquid
- **Bottle Capacity:** 1000ML
- **Material:** Chrome Plated Brass

## NXG WS 6



- **Installation:** Deck Mounted
- **Material:** Chrome Plating – 60% Brass Body
- **Power Supply:** AC100–240V
- **Pump Type:** Foam / Liquid
- **Bottle Capacity:** 1000ML (Ceramic Cartridge)

\*Color options available

**WWW.NXGS.IN**

# WASH STATIONS

## NXG WS 7



- **Material:** Brass with Chrome
- **Power Supply:** 220V-50HZ
- **Rated Power :** Stand by  $\leq 2W$ ; Working  $\leq 5W$
- **Bottle Capacity:** 1000 mL
- **Inlet Connection:** G1/2"
- **Water Pressure Required:** 0.05-0.8 MPa

## NXG WS 8



- **Material:** Chrome Plating Brass Body
- **Power Supply:** AC100-240V
- **Pump Type:** Foam / Liquid
- **Bottle Capacity:** 3000ML
- **Suitable Soap Viscosity:** 1-17cps
- **Suitable Soap PH:** 5-9
- **Water Pipe Diameter:** G1/2"
- **Water Pressure:** 0.05-0.8MPa

## NXG WS 9



- **Soap Bottle:** 3000mL
- **Water Flow Rate:** 0.05-0.8MPa
- **Solenoid Cartridge**
- **NEO PERL Aerator**
- **Chrome Plated Brass**

\*Color options available

**WWW.NXGS.IN**

# WASH STATIONS

## NXG WS 10



- Brushless Motor
- Drying Time: 15–20s
- Working Temperature: 1–55°C
- Voltage: 220–240VAC, 50/60Hz
- Air speed: 80m/s
- Startup Method: Touch-Free Infrared



**NXG'S WASHROOM AUTOMATION SERIES WILL TURN YOUR REGULAR RESTROOMS INTO SOPHISTICATED & ELEGANT RESTROOMS AT AFFORDABLE PRICES.**

**OUR PRODUCTS ARE SIMPLY A CLASS APART EXPERIENCE!**

\*Color options available

**[WWW.NXGS.IN](http://WWW.NXGS.IN)**



# THERMOSTATIC FAUCETS

## NXG TF 1



- **Installation: Deck Mounted**
- **Material: Chrome Plated Brass Body**
- **Power Supply: DC 6V**
- **Inlet & Outlet Pipe Dia: DN 15 G1/2"**
- **Water Pressure: 0.05–0.6MPa**
- **Power Consumption: 0.5 MW**
- **Ambient Temperature: 0.1–55 °C**

## NXG TF 2



- **Installation: Deck Mounted**
- **Material: Chrome Plated Brass Body**
- **Power Supply: DC 6V**
- **Water Pipe Diameter–Inlet & Outlet Pipe: DN 15 G1/2"**
- **Water Pressure: 0.05MPa–0.6MPa**
- **Power Consumption: 0.5 MW**
- **Ambient Temperature: 0.1–55 °C**

## NXG TF 3



- **Faucet Mount: Single Hole**
- **Type: Deck Mounted**
- **Make: 60 % Brass**
- **Water Pressure: 0.1~1.6MPa**

\*Color options available

**WWW.NXGS.IN**

# THERMOSTATIC FAUCETS

## NXG TF 4



- **Warranty: 5 years**
- **Material: Brass**
- **Feature: Thermostatic Knob**
- **Faucet Mount: Single Hole**
- **Installation Type: Deck Mounted**
- **Number of Handles: Single Handle**

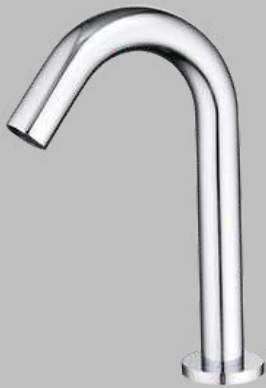


\*Color options available

**WWW.NXGS.IN**

# SENSOR FAUCETS

## NXG SF 1



- **Material: Chrome Plated Brass**
- **Sleek Mouth Motion Sensor**
- **Water Pressure: 0.02**
- **MPa–0.8 Mpa Inlet: G1/2"**

## NXG SF 2



- **Material: Chrome Plated Brass Metal**
- **Shape Swan Neck**
- **Water Pressure: 0.02 MPa–0.8**
- **Mpa Inlet: G1/2" (Dn15)**
- **150mm Adjustable Sensing Range with water-saving aerator**

## NXG SF 3



- **Faucet Mount: Single Hole**
- **Installation Type: Deck Mounted**
- **Make: Brass**
- **Water Pressure: 0.02 MPa–0.8 Mpa**
- **Inlet: G1/2" (Dn15)**

\*Color options available

**WWW.NXGS.IN**

# SENSOR FAUCETS

## NXG SF 4



- **Material:** Chrome Plated Brass Body
- **External Point Source:** AC:110v-240V,50Hz-60Hz / DC: 4 AA Alkaline Batteries
- **Applicable Water Pressure:** 0.05-0.7Mpa
- **Inlet:** G1/2",G3/8"
- **Applicable Water Temperature:** 0.1-85 °C (Ambient Temp. 0.1-60°C)
- **Effluent Discharge:** Max Water Output 8L/min (dynamic water pressure 0.3MPa)

## NXG SF 5



- **Material:** ABS with Brass Metal Spout
- **Power Supply:** DC 6V
- **Inlet & Outlet Pipe Dia:** DN 15 G1/2"
- **Water Pressure:** 0.02-0.8 Mpa

## NXG SF 6



- **Material :** ABS with Brass Metal Spout
- **Power Supply:** DC 6V
- **Inlet & Outlet Pipe Dia:** DN 15 G1/2"
- **Water Pressure:** 0.02-0.8 Mpa

\*Color options available

**WWW.NXGS.IN**

# FAUCETS

## NXG F1



- 4 Aerators
- H&C Knob)
- Installation: Deck Mounted
- Material: Chrome Plating - 60% Brass Body
- Power Supply: AC100-240V
- Function: Hot and Cold Water
- Colour: Chrome, Matte Black, White, Gold Rose Gold

## NXG F2



- Material: Brass
- Surface: Chrome
- Single Hole Deck Mount

## NXG F3



- Material: Brass
- Surface: Chrome
- Single Hole
- Deck Mount

\*Color options available

[WWW.NXGS.IN](http://WWW.NXGS.IN)

# URINALS

## NXG U 1



- Easy to Install
- Dimension : L245 X W300 X H400 MM
- Fixing Wall Mounted Outlet
- Universal Urinal Bracket
- Urinal Outlet Accessories
- Fine finishing for an elegant and aesthetic look

## NXG U 2



- Electronic Induction Type: Ac Type
- Accessories: Pipe Adapting Piece
- Spud Location: Back Spud
- Size: 360\*380\*740
- Water Saving

## NXG U 3



- Design Style: Modern
- Spud Location: Top Spud
- Urinal Type: Wall-Mounted Urinals
- Color: Customizable
- Packing: 5 Layer Corrugated Paper
- Size: 420X380X740mm

\*Color options available

**WWW.NXGS.IN**



# URINALS

## NXG U 4



- **Flushing Method: Gravity Flushing**
- **Design Style: Modern**
- **Electronic Induction Type: Ac Type**
- **Liquid Medicine: Included**
- **Accessories: Partition Board**
- **Spud Location: Back Spud**
- **Urinal Type: Standing Urinals**



## NXG U 5

- **Flushing Method: Sensor-Based Flushing**
- **Design Style: Modern**
- **Electronic Induction Type: AC Type**
- **Urinal Type: Standing Urinals**



\*Color options available

**WWW.NXGS.IN**

# **BIDETS**

## **NXG WC 1**



- **Description: Automatic Self-Clean Toilet Seat**
- **Feature Air-drying: Heated Seat**
- **Advanced Function: Seat Heating**
- **Flushing Flowrate: 3.0–6.0L**
- **Remote Control: Included**
- **Working Voltage: 220V, 100V~110V**
- **High-Resolution Frameless LED Display**

[WWW.NXGS.IN](http://WWW.NXGS.IN)

\*Design on demand

\*Color options available

# **BIDETS**

## **NXG WC 2**



- UV sterilisation, Aromatherapy features
- Buffer Cover plate: Yes
- Flushing Flowrate: 3/6L
- Flushing Button Type: Upper-pressing Two-end Type
- Flushing Method: Gravity Flushing
- Toilet Bowl Shape: Elongated
- Color: Customer's Request
- Feature Air-drying, Heated Seat
- Installation Type: Wall Mounted
- Microwave sending to open the LID

## **NXG WC 3**



- Auto Flush
- Wall Hung
- 10 Year Warranty

## **NXG WC 4**



- Flushing Flowrate: 3/6L
- Flushing Button Type: Upper-pressing Two-end Type
- Installation Type: Wall Mounted
- Feature Dual-Flush
- Flushing Method: Gravity Flushing
- Toilet Bowl Shape: Elongated
- Color: Customer's Request
- Installation: Wall-Hung Mounted Installation

\*Design on demand

\*Color options available

[WWW.NXGS.IN](http://WWW.NXGS.IN)

# **BIDETS**

## **NXG WC 5**



- **Advanced Function: Automatic Deodorization**
- **Flushing Flowrate: 3.0–6.0L**
- **Flushing Button Type: Side-pressing One-part Form**
- **Warranty: 3 years**
- **Color: Customized**
- **Size: 695\*490\*540mm**



## **NXG WC 6**

- **Mount: Floor**
- **Flush Sensor: Yes**
- **Material: Ceramic**
- **Warranty: 5 Years**



**\*Design on demand**

**\*Color options available**

# URINAL FLUSHERS

## NXG UF 1



- AC + DC + Push Button
- Concealed Wall Mount
- Water Pressure: 0.03 MPa–0.8 Mpa
- Inlet/Outlet: G1 "
- Single Chip Microcomputer Design
- Two-Stage Flushing

## NXG UF 2



- DC+ Push Button
- Water Pressure: 0.01 MPa–0.8 Mpa
- Inlet/Outlet: 40mm
- Size: 120x120 mm
- Voluntary Flush in 24 hr
- Water Consumption Tracking

## NXG UF 3



- Type: DC & AC
- Flush Valve Type: Sensor
- Material: Brass
- Application: WC/ toilet

\*Color options available

[WWW.NXGS.IN](http://WWW.NXGS.IN)

# URINAL FLUSHERS



## NXG UF 4

- 15mm (1/2") SS Flange
- Battery pack (Inbuilt)
- Brass Flow Control
- Remote (User remote - on demand)



**HP, BANGALORE**



# URINAL FLUSHERS



## NXG UF 5

- **Flush Valve Type: Sensor**
- **Application: Urinal**
- **Type: Flush Valves**
- **Material: 304 SS panel + Plastic Frame**
- **Special Features: Concealed, Touchless, Water Saving**
- **Power Supply: DC:6V (4xAA Alkaline batteries)**



## NXG UF 6

- **Flush Valve Type: Sensor**
- **Sensor Range: 60–85 cm adjustable**
- **Power supply: AC,DC,AC+DC**
- **Battery life: 108000 flushes**
- **System protection timer: 12/24 hours**
- **Flush: 1/2 flushes optional**
- **Surface finished: Polish,Brush,Nickle**



\*Color options available

[WWW.NXGS.IN](http://WWW.NXGS.IN)

# SOAP DISPENSERS



\*Color options available

[WWW.NXGS.IN](http://WWW.NXGS.IN)

# SOAP DISPENSERS

## NXG SD 1



- **Working: Sensor**
- **Capacity: 1000mL**
- **Power Supply: 4 pcs AA Battery or AC/DC power**
- **Logo Printing: Available**

## NXG SD 2



- **Voltage: DC9V(6 AA batteries)**
- **Battery life: 40000 times**
- **Color: Polished / Brushed / Black / White**
- **Volume: 800 ml**
- **Induction Distance: 5-9CM**
- **Product Size: 100\*110\*220mm**

## NXG SD 3



- **Product size: 70\*120\*175mm**
- **Capacity: 280ml**
- **Product weight: 0.4kg**
- **Startup mode: Infrared sensor**
- **Induction distance: 8-10cm**
- **Power supply mode: Type C charging**
- **Liquid output 0.8/1.4/2ml 0.3/0.6/0.9ml**

\*Color options available

[WWW.NXGS.IN](http://WWW.NXGS.IN)

# SOAP DISPENSERS



## NXG SD 4

- **Material: Stainless Steel**
- **Soap Type: Liquid Gel**
- **Batteries: 4 AA Batteries**
- **Capacity: 1100 mL**



## NXG SD 5

- **Main Material: ABS**
- **Capacity: 550 ML**
- **Cartridge Life Time: 500,000 cycles**
- **Size: 22\*12\*7CM**
- **Power supply: Built-in 1200mAh Rechargeable Battery**
- **Colors: White & Black**



## NXG SD 6

- **Main Material: ABS**
- **Capacity: 1000 mL**
- **Drop Function: Liquid, Foam and Spray**
- **Color: White, Black, Gold**
- **Working: Manual**

\*Color options available

[WWW.NXGS.IN](http://WWW.NXGS.IN)



# TISSUE PAPER DISPENSERS

\*Color options available

[WWW.NXGS.IN](http://WWW.NXGS.IN)

# TISSUE PAPER DISPENSERS

## NXG TPD 1 (AUTOMATIC)



- **Material:** Stainless Steel 304 cover + ABS Plastic bracket & ends
- **Tissue Type:** Roll Towel Paper
- **Roll Towel Capacity:** Max. Diameter 190MM [ 7-31/64" ]
- **Roll Towel Width:** Max. 200MM[7-7/8" ]
- **Motor Type [Dispensing Towel]:** DC Motor, 2,500 RPM, 4.8 W
- **Motor Type [Cutting Towel]:** DC Motor, 1225 RPM, 3.6 W

## NXG TPD 2 (AUTOMATIC)



- **Material:** ABS
- **Tissue Type:** Roll Towel Paper
- **Roll Towel Capacity:** Max. Diameter 190MM [ 7-31/64" ]
- **Roll Towel Width:** Max. 200MM[7-7/8"]
- **Motor Type [ Dispensing Towel ]:** DC Motor, 2,500 RPM, 4.8 W
- **Motor Type [ Cutting Towel ]:** DC Motor, 1225 RPM, 3.6 W

## NXG TPD 3



- **Material:** SS 304
- **AC 110-240V**
- **4 Size D Batteries**
- **Paper Roll Size : D 190 X 200 W mm**

[WWW.NXGS.IN](http://WWW.NXGS.IN)

\*Color options available



# TISSUE PAPER DISPENSERS



## NXG TPD 4(AUTOMATIC)

- Sensing distance: 0-15cm
- Installation: Wall mounted
- Paper size: 20/30/40cm in length, 20-21 in width
- Shape: Circular

## **We also sell**

- **Air Curtains**
- **Robotic Glass Cleaners**
- **Insecticutors**
- **Breathing Apparatus**
- **Smart UVC Towel Sterilizing Rack**
- **Shoe Shining/ Cover Machines**
- **Floor Scrubbing Machines**
- **Vacuum Cleaners**
- **Baby Diaper Changing Stations**

**If there's anything that's not on the catalogue then share the image with us**

# WASH BASINS

## NXG WB 1



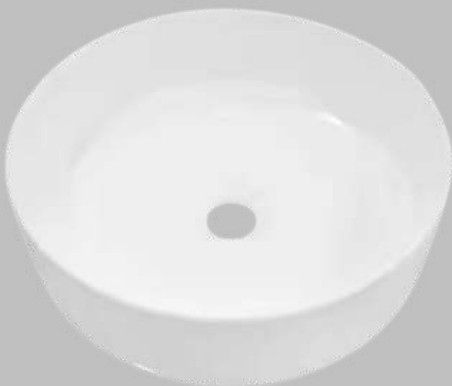
- **Warranty: Lifetime**
- **Bathroom Accessory: Drainer**
- **Capacity 9L**
- **Basin Shape: Rectangle**
- **Faucet Mount: Single Hole**

## NXG WB 2



- **Basin Shape: Rectangular**
- **Long Neck Tap Suggested**
- **Special Application: Hand washing**
- **Size: 19"X15"X5" / 485\*375\*130mm**

## NXG WB 3



- **Processing: Glaze Spraying**
- **Basin Shape: Circular**
- **Faucet Mount: Single Hole**
- **Stone Type: Ceramic**
- **Material Quality: Ceramic, porcelain**
- **Size: 360x360x125mm**

\*Color options available

[WWW.NXGS.IN](http://WWW.NXGS.IN)

# DUSTBINS & BABY DIAPER STATIONS



## NXG D 1

- **Material: SS 304**
- **Capacity: 8 L/12 L/50 L**
- **Shape: Cylindrical**
- **Control Mode: Peddle**



## NXG BD 1

- **Material: SS 304**
- **Recommended Installation: 800 mm at the lowest point.**
- **Shape: Horizontal**



## NXG BD 2

- **Material: HDPE**
- **Recommended for slim areas**
- **With safety harness**

\*Color options available

[WWW.NXGS.IN](http://WWW.NXGS.IN)

# AEROSOL DISPENSERS

## NXG AD 1



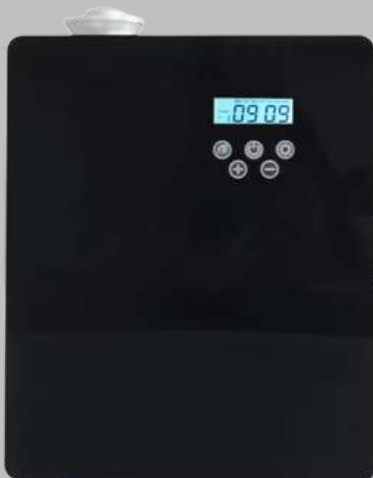
- **Power Source: Battery**
- **Recommended Room Size:**  
**>400 sq. ft**
- **Voltage (V): 5**
- **Consumption: 0.4ml/hr**
- **Oil Bottle capacity: 100ml**

## NXG AD 2



- **Product name: Aerosol Dispenser**
- **Color: White or Customized**
- **Size: 210\*85\*76 mm**
- **Material: ABS**
- **Refill Size: 110 ml / 270 ml**
- **Power Supply: D alkaline battery or 5V/1A Type-C USB**

## NXG AD 3



- **Color: Black White**
- **Material: Metal**
- **Accessories: User Manual + Adaptor**
- **Capacity: 150mL**

\*Color options available

[WWW.NXGS.IN](http://WWW.NXGS.IN)

# AIR PURIFIERS



## NXG AP 1

- **Material:** ABS body.
- **Button:** Touch screen button.
- **Motor:** DC Brushless motor
- **Speed:** 10 fan speed.
- **Rotation:** 71 ° Body sway.
- **Coverage:** 870 Sq. Ft.
- **Noise:** 40 dB



## NXG AP 2

- **Functions:** Hot + Cool + Composite
- **filter + Plasma Sterilizer)**
- **Motor:** DC brushless motor
- **Screen:** LCD touch screen
- **Speed:** 1-12 Speed Fan
- **Coverage:** 690 Sq. Ft.
- **Rotation:** 55° Wide Oscillation
- **Noise:** 40 dB



## NXG AP 3

- **Coverage Area:** 1300 Sq. Ft.
- **Featured Function:** UV sterilization, Humidify, Aromatherapy
- **Noise Level** 30-69dB
- **Filter:** 5 stages, Pre-filter+ UV+ PM0.5 HEPA + Activated Carbon+ h12 hepa

\*Color options available

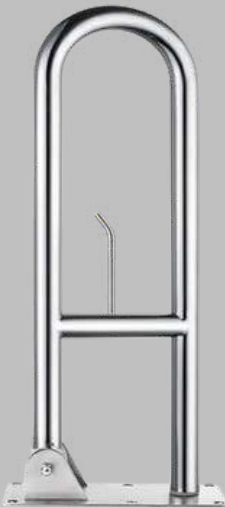
[WWW.NXGS.IN](http://WWW.NXGS.IN)

# GRAB BARS



## NXG GB 1

- **Grab Bar Size: 45 X 45cm**
- **Material: SS 304**
- **Color: Customizable**



## NXG GB 2

- **Grab Bar Size: 300/ 400/ 450/ 600mm or Customized**
- **Material: SS 304**
- **Color: Silver, Black, or Customized**



## NXG GB 3

- **Grab Bar Size: 45 X 45cm**
- **Material: SS 304 Application Washroom Bathroom Toilet**
- **Size: 450\*450mm or customizable**



# DYSON'S RANGE

## V



- **Noise level: 79 dB(A)**
- **Material: Plastic**
- **Drying Time: 12 seconds**
- **Motor specification: 1,000 W**
- **Lock-out period: 30 seconds**
- **Airspeed at aperture: 690 km/h**

## 9KJ



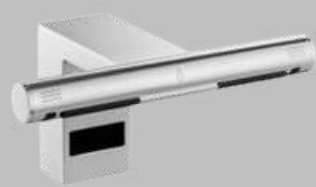
- **Noise level: 79 dB(A)**
- **Material: Steel**
- **Drying time: 10-12 seconds**
- **Peak Noise level: 79dB**
- **Power: 900 Watts- 650 Watts-**
- **Voltage: 220-240V 50/60 Hz**

## TAP DRIER



- **Noise Level: 81dB**
- **Material: Steel**
- **Drying Time: 14 seconds**
- **Frequency: 50-60hz**
- **Motor switching rate: 5,400 per second**

# COMPARISON



NXG TAP N DRY



DYSON W+D

Material	Brass	Steel
Noise Level	58.8 dB	81 dB
Colour Options	Gold, Black & Silver	Grey
Price	INR 98,850	INR 1,37,000



HD 1



DYSON V

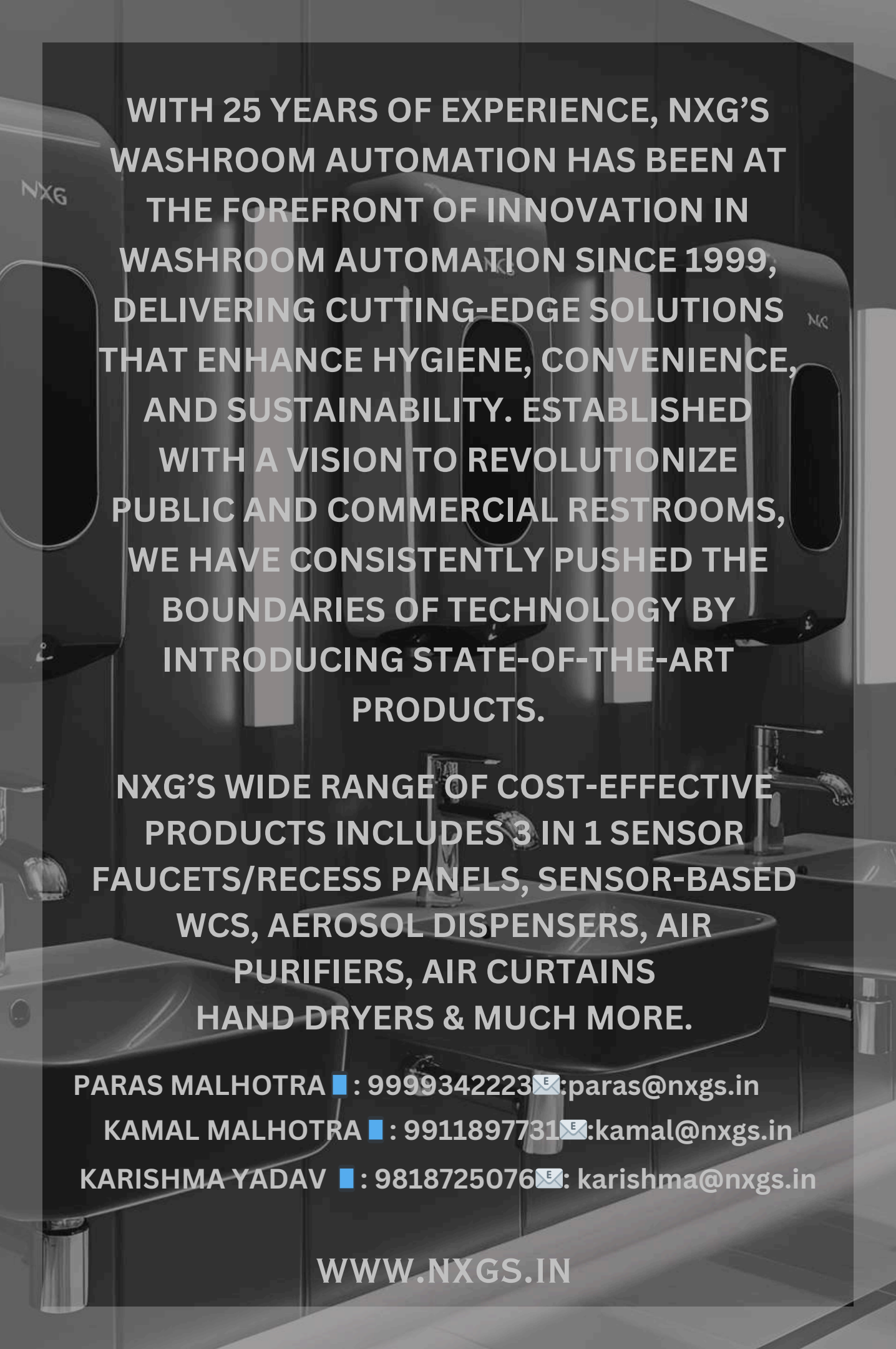
Material	SS 304	Plastic
Noise Level	65 dB	79 dB
Colour Options	Gold, Black & Silver	White & Nickel
Price	INR 77,250	INR 84,850



OUR DEDICATION TO QUALITY, RELIABILITY,  
AND CUSTOMER SATISFACTION HAS EARNED  
US A TRUSTED REPUTATION ACROSS  
VARIOUS INDUSTRIES, FROM HOSPITALITY  
AND HEALTHCARE TO EDUCATION AND  
CORPORATE FACILITIES. WITH A QUARTER-  
CENTURY OF EXPERIENCE, NXG CONTINUES  
TO LEAD THE WAY IN TRANSFORMING  
WASHROOM EXPERIENCES, MAKING THEM  
MORE HYGIENIC, EFFICIENT, AND ECO-  
FRIENDLY.

AS WE LOOK TO THE FUTURE, OUR  
COMMITMENT TO INNOVATION AND  
EXCELLENCE REMAINS UNWAVERING,  
ENSURING THAT OUR SOLUTIONS MEET  
TODAY'S NEEDS AND ANTICIPATE  
TOMORROW'S DEMANDS.

[WWW.NXGS.IN](http://WWW.NXGS.IN)



**WITH 25 YEARS OF EXPERIENCE, NXG'S WASHROOM AUTOMATION HAS BEEN AT THE FOREFRONT OF INNOVATION IN WASHROOM AUTOMATION SINCE 1999, DELIVERING CUTTING-EDGE SOLUTIONS THAT ENHANCE HYGIENE, CONVENIENCE, AND SUSTAINABILITY. ESTABLISHED WITH A VISION TO REVOLUTIONIZE PUBLIC AND COMMERCIAL RESTROOMS, WE HAVE CONSISTENTLY PUSHED THE BOUNDARIES OF TECHNOLOGY BY INTRODUCING STATE-OF-THE-ART PRODUCTS.**

**NXG'S WIDE RANGE OF COST-EFFECTIVE PRODUCTS INCLUDES 3 IN 1 SENSOR FAUCETS/RECESS PANELS, SENSOR-BASED WCS, AEROSOL DISPENSERS, AIR PURIFIERS, AIR CURTAINS HAND DRYERS & MUCH MORE.**

**PARAS MALHOTRA ■ : 9999342223✉:paras@nxgs.in**

**KAMAL MALHOTRA ■ : 9911897731✉:kamal@nxgs.in**

**KARISHMA YADAV ■ : 9818725076✉: karishma@nxgs.in**

**WWW.NXGS.IN**