



## NxG: Intelligent Washroom Automation Products for Today's Green Projects

**One Stop | Innovative Solutions for Next-Generation.....  
Fight Against Germs & Bacteria Spread In Washrooms**



**NXG's** wide range of cost effective products include sensor faucets, sensor flush valves for WC and Urinals, Stainless Steel Grab Bars, Baby Changing Station, Shower Folding Seats, Hand Dryers, Toilet Paper Holders, Sensor Soap/Foam Dispensers, Multi-Purpose Bathroom Fittings and Accessories.

We have designed a high performance range of sanitaryware with cutting edge design suits to all sectors. Our collection boasts ultra-modern and stylish designs which are equipped with easy cleaning & maintenance.

**\*Let's Have: A Scheduled Meeting or Call...So That We Can Share An Idea With You To Get Associated With Your Prestigious Organisation**

**NXG**

**SMART  
WASHROOM  
AUTOMATION**

### The range

HU  
02



**Engineered for hygienic performance.  
Designed for compact spaces.**

HEPA filters capture 99.95% of particles as small as 0.1 microns\*, including bacteria and viruses\*

Slim format – just 100mm deep,  
no recessing required

Tested and certified by NSF International

Contains antibacterial additive

Touch-free operation

Certified by Quiet Mark

Easy to service. Safe electrical disconnect.

12-second dry time\*

Small carbon footprint\*

HU  
03



**Fast energy efficient  
HEPA-filtered hand dryer**

Low energy. 9.1kJ per dry in Eco mode

Switch between two power modes  
Max: 900W or Eco: 650W

No paper mess. No paper waste

HEPA filters capture 99.95% of particles as small as 0.1 microns\*, including bacteria and viruses\*

Certified by Quiet Mark

Tough and robust

Slim format – just 100mm deep,  
no recessing required

Touch-free operation

Easy to service. Safe electrical disconnect

10-second dry time in Max mode\*

Small carbon footprint\*

WD  
04



Short

WD  
05



Tall

WD  
06



Wall



**Airblade™ hand drying  
technology in a tap**

Saves space

Wash and dry hands at the sink

No dripped water on the floor

Saves water\*

HEPA filter captures 99.95% of particles\*,  
as small as 0.1 microns, including bacteria and viruses\*

Certified for use in food environments  
by HACCP International

Automatic water flush, activates after 24 hours –  
helps reduce water stagnation problems

Certified by Quiet Mark

Touch-free operation

14-second dry time\*

Small carbon footprint\*

## NXG: Behind Mirror Washstation (Hand Dryer, Soap Dispenser & Paper Dispenser)

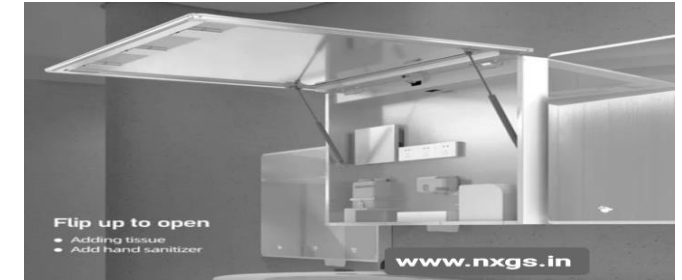
**Can be Customized with Hydraulic Cabinet - Led Looking Glass**



### **BMS-3 (Three in One Combination without Cabinet)**

SS 304 with Both Sided Pulldown Sliding Rail  
& Bottom Snap Lock System

**\*Soap Dispenser LED Indicator**  
**Red Twinkling for Low Battery / Soap**



### **NXG-BMP(BIG)**



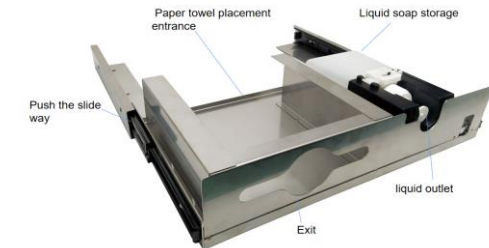
485mm  
120mm  
310mm



### **NXG-BMS-2 (2in1 SS 304)**

Automatic Soap Dispenser with Paper Dispenser

**\*Soap Dispenser LED Indicator**  
**Red for work and twinkling for Low Battery**



### **NXG-BMP (Small)**



190mm  
90mm  
268mm

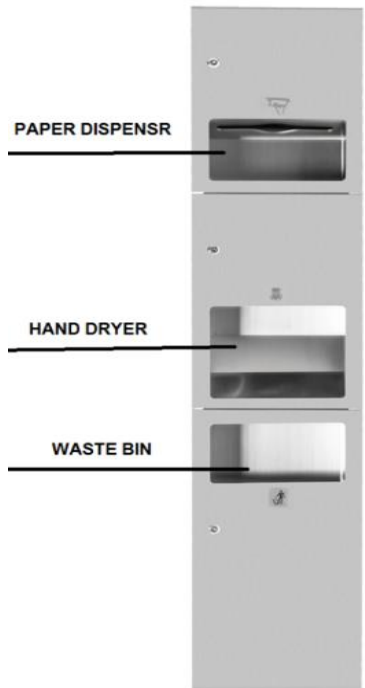
### **NXG-BMS (AUTO)**

**Behind Mirror HDPE Auto-Soap Dispenser**

**\*304 Stainless Steel Backplate – HDPE Translucent Bottle**  
**\*Capacity: 1000ml (High Traffic)**



**NXG: Multifunctional Washroom Recesses Panels (Stainless Steel, Satin Finish)**



**NXG: RPS 03**  
**Recessed Paper Towel Dispenser/Automatic Hand Dryer with Waste Receptacle (3in1)**  
**Concealed Type W310 x L1650 x H160 mm**



**NXG: RPS 02**  
**Recessed Paper Towel Dispenser with Waste Receptacle (2in1)**  
**Concealed Type W310 x L1200 x H140 mm**



**NXG: SANITARY NAPKIN DISPOSAL– SURFACE MOUNTED**  
**\*CAN BE CUSTOMIZED IN 2IN1, 3IN1, 4IN1**





## NXG: WASH STATIONS

### High Speed Hand Dryer + Water Saving Tap with Soap/Foam Dispenser

\* Can be arranged as an individual unit as per the project requirements with an option of Wall Mount or Deck Mount (SS 304)

#### NXG: WS-1 (Deck Mount)



#### (WASH STATION HAND DRYER)

**Drying Time:** 11 seconds (According to UL hand dryer PCR)

**Timing Protection:** 60 sec Auto Cut-off

**Sound Level:** MIN 58.8 dB to 62.9 dB MAX @ 1m

#### (WASH STATION FAUCET)

**Flow Rate:** Max. 2.2GPM/8.3LPM - Operating Water Pressure: 0.5 - 6 bar (7 - 87 PSI)

**Water Inlet** PF 1/2 - Mounted on a Single-Hole Lavatory or Deck (35Φ)

**Applicable Water Temperature:** 4°C - 60°C (39°F - 140°F )

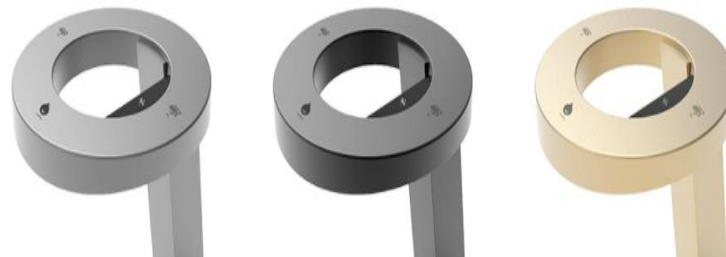
#### (WASH STATION SOAP/FOAM)

**Capacity:** 1,500 ml, Refillable Reservoir

**Liquid Soap Viscosity Range:** 1~ 3000 mPas - Soap Pump Life Cycle: 100k - Mechanism Life Cycle: 500k

**ONE DROP - Liquid:** 1 CC - Foam: 0.7 CC - Spray: 1 CC

#### NXG: WS-1 (Wall Mount)



#### NXG: CONCEPT 3 (ROUND)

#### (HAND DRYER)

**NOISE LEVEL:** AT 2m 70 Db ( HEPA Filter )

**Dimensions:** 180 height x 322 width x 180 depth (mm)

#### AUTOTAP WITH (AERATOR NEOPERL TECHNOLOGY)

**Pressure:** 1.89 l/m (3 Bar)

**ENCLOSED ALTERNATIVE:** 5 l/min (3 Bar)

**Water Consumption:** 1,89-5 l/m (3 Bar)

**Material:** Anodised Aluminium/ABS/Brass

#### (SOAP DISPENSER)

**Weight:** 0,9 kg **Material:** ABS **Capacity:** 2 litres



\*Available Options: Titanium | Black | Rose Gold

\*Deck Mount: Anodised Aluminium | ABS | Brass

## **NXG: Combinations of WASH n DRY & WASH n CLEAN** **(Deck/Wall Mount)**



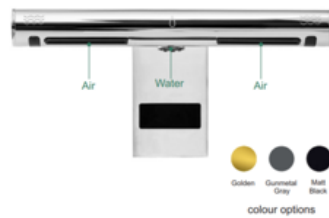
### **NXG-CONCEPT 3 (DECK/WALL MOUNT)**

**SS Chrome Finish Combination Soap + Tap + Air**

**Brushless Digital Motor**

**Water Pressure Range: 1 – 8 Bar**

**Capacity of Soap Dispenser: 3000ml**



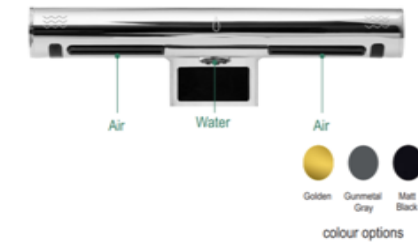
### **NXG – CONCEPT-2 (DECK/WALL MOUNTED)**

**Brass Chrome Finish Combination Tap + Air**

**Brushless Digital Motor with HEPA**

**Drying Time: 10-15s**

**Water Pressure Range: 1 –6 Bar**



### **NXG: Wing-Shape 2in1 (T+S/F) Deck Mount**

**Water Pressure: 1 - 6 bar Bottle Capacity: 1000ML**



### **NXG: V-Shape 2in1 (T+S/F)**

**Additional Functions:** 1. Low Soap Indicator  
2. Hot and Cold Water Knob

## **NXG: HIGH SPEED JET HAND DRYERS WITH HEPA & Intelligent UV PURIFICATIONS**

**\*Brushless OR Brush Motor Heating Control System**



← **NXG- JHD-S**  
SS 304 + SS Back Plate  
Noise Level In Db(at 2m): 72



**NXG-JHD 01** →  
ABS with Antimicrobial  
Coating & Flame Resistant  
Noise Level In Db(at 2m): 72



← **NXG- SS-V Blade**  
Brush Finish SS 304  
Noise Level In Db(at 2m): 72  
Drying Time: 10-15 Sec  
Auto-Cut: >60 Sec



**NXG- ABS-V Blade** →  
Black/Silver  
Noise Level In Db(at 2m): 72  
Drying Time: 10-15 Sec  
Auto-Cut: >60 Sec

## **NXG: Wall Mount SS High-Speed Hand Dryers** **INTELLIGENT UV + HEPA 360° STERILISATION**



**NXG- SS-A Blade**  
with HEPA filter  
Noise Level In Db(at 2m): 75  
Drying Time: 8-12 Sec  
Auto-Cut: >60 Sec

**NXG-HD-PEARL**  
Brush Finish SS 304  
Auto-Heat Control  
Drying Time: 10-15 Sec  
Auto Cut: >45s



**NXG-HD-PRIZM**



**NXG- HD-UVC Technology 360° Sterilization**  
Brush Finish SS 304  
Noise Level In Db(at 2m): 79  
Drying Time: 12-15 Sec  
Auto-Cut: >60 Sec

**NXG-HD-SLIM**  
Brush Finish SS 304  
Noise Level In Db(at 2m): 79  
Drying Time: 12-15 Sec  
Auto-Cut: >60 Sec





# **NXG: Temperature Adjustable Sensor and Manual (Combined) Thermostatic Basin Faucets**

## **NXG – ST 02 (AC-DC / H&C)**



**Product:** Inbuilt Thermostatic Faucet with Hot n Cold Knob

**Installation:** Deck Mounted

**Material:** Chrome Plating Brass Body

**Power Supply:** DC 6V

**Water Pipe Diameter-Inlet & Outlet Pipe:** DN 15 G1/2"

**Water Pressure:** 0.05MPa-0.6MPa

**Power Consumption:** 0.5 MW **Ambient Temperature:** 0.1-55 °C

## **NXG – ST 03 (AC-DC / H&C)**



## **NXG – ST 04 (AC/DC)**

**Brass Chrome Plated Deck Mount**

**Sleek Mouth Sensor**

**Water Pressure:** 0.02 MPa–0.8 Mpa

**Inlet:** G1/2" (Dn15)

## **NXG – ST 05 (AC/DC)**

**Brass Chrome Plated Deck Mount**

**Water Pressure:** 0.02 MPa–0.8 Mpa

**Inlet:** G1/2" (Dn15)



## **NXG: TPRW Wall Mounted Sensor Faucet**

**Polycarbonate ABS with Brass Metal Spout**

**Power Supply:** DC 6V

**Inlet & Outlet Pipe Dia:** DN 15 G1/2"

**Water Pressure:** 0.02 MPa–0.8 Mpa

**Rotatory Spout-Recommended for Doctors  
@ Operation Theatre + Kitchen Area**

## **NXG – Faucet 4 Aerators (H&C Knob)**

**Installation:** Deck Mounted

**Material:** Chrome Plating - 60% Brass Body

**Power Supply:** AC100-240V

**Function:** Hot and Cold Water



## **NXG: Urinal Sensor Flushing System (Motion Sensor)**

**Water Saving Intelligent Flush Protection Technology & Low Power Consumption**



**NXG: UPT01 High Grade White Ceramic Urinal Pot with Inbuilt Sensor (DC)**

Water Pressure: 0.02 MPa–0.8 Mpa    Inlet/Outlet: G1/2 " (Dn15)

**Inbuilt Brass Flow Control to Adjust The Flow of Water**



**NXG: UFS SS 3 in 1 URINAL- Concealed Wall Mount (AC + DC + Push Button)**

Water Pressure: 0.02 MPa–0.7 Mpa    Inlet/Outlet: G1/2 "

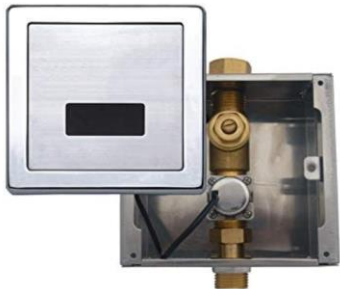
**Single Chip Microcomputer Design, Two-Stage Flushing**



**NXG: UFR SS 3 in 1 URINAL- Concealed Wall Mount (AC+DC+Push Button)**

Water Pressure: 0.02 MPa–0.8 Mpa    Inlet/Outlet: G1/2 " (Dn15)

**Pre & Post Flush (SS FRONT PLATE WITH NEON RING LED)**



**NXG: UFR 01 Wall Mounted Stainless Steel Automatic Urinal Flush Sensor**

Dual Power Supply Mode Chrome Plated (AC/DC) - LED Indicator

Water Pressure: 0.02 MPa–0.8 Mpa    Inlet/Outlet: G1/2 " (Dn15)

**NXG: Wall Mounted Automatic Led Toilet/Urinal Sterilizer Dispenser**



## **NXG: WC Flushing System (Motion Sensor)**

**Water Saving Intelligent Flush Protection Technology & Low Power Consumption**



**NXG: WCPT01 Floor Mounted Sensor Based White Ceramic WC (DC Type)**

**STRAP: 225MM (9")**

**Touchless Wave Sensor Flushing One Piece Closet**



**NXG- WCF-S SS 3 in 1 TOILET FLUSHER-Concealed Wall Mount (AC + DC + Push Button)**

**Water Pressure: 0.03 MPa–0.8 Mpa**

**Inlet/Outlet: G1 "**

**Single Chip Microcomputer Design, Two-Stage Flushing**



**NXG: WCF-R SS 3 in 1 TOILET FLUSHER- Concealed Wall Mount (AC+DC+Push Button)**

**Water Pressure: 0.01 MPa–0.8 Mpa**

**Inlet/Outlet: 40mm**

**Adjustable Dual Flush Time-24hrs Voluntary Flush, if NO USE with Robust High Grade Brass Valve**



**NXG: Auto Jet Bidet IR Wave Sensor System (100mm Adjustable Sensing Range)**

**Polycarbonate ABS Plastic-DC (Battery) Operated**

**Water Pressure: 0.02 MPa–0.8 Mpa Inlet/Outlet: 01/2 " (Dn15)**

**\* Make Your Jet Touch Free**



**Bye Bye...  
MANUAL HEALTH FAUCET**

**NXG- ABS/BRASS Health Faucet  
with Water Switch On/Off**



## **NXG: Automatic Water Saving Taps & Foam + Soap Dispensers**



### **NXG – DIGITAL 2in1 AC (T+S)**

2 in1 Integrated Sensor Faucet + Soap Dispenser Deck Mount (Combination)

**Rated Power:** Stand by  $\leq 2W$ ; Working  $\leq 5W$

**Bottle Capacity:** 1000ML

**Inlet Connection:** G1 /2"

**Water Pressure Required:** 0.05-0.8 Mpa

**\* Finish Customisation: Brass/Titanium/Rose Gold, Black(PVD)**

**\* Infrared induction**

### **NXG – SD01 (DC)**

(700ml / 1000ml / 1200ml)



304 STAINLESS  
STEEL AUTOMATIC  
SOAP DISPENSER

### **NXG: (Wall Mount-Automatic Soap/Foam/Sanitizer Dispensers)**

Stainless Steel 304 with HDPE Cap

**Desired Capacities Can be Customized as Per Requirements**

**(AC Optional with Extra Cost)**

### **NXG – SD02 (AC-DC)**

1000ml



### **NXG – SD03 (AC-DC)**

1000ml



### **NXG – SD04 (AC-DC)**

1000ml



### **NXG: ABS Automatic Soap/Sanitizer/Foam Dispensers**

# **NXG: 5th Gen Multifunctional Robotic & Innovative Cleaners**

**Saves- Both Time & Human Efforts**



## **NXG-SkyBot Cordless Robot Window Cleaner**

**Brushless Motor 18000rpm      Noise Level <65dB**

**Safety Cable: 5 Mtr   \* 2 Nozzle Water Spray: \* Water Tank Capacity: 50ml  
(Auto:0.3ml/5s ,Manual: 0.3ml/time)**

**Anti-Collision Distance Measuring Laser Sensor-Automatic/Remote Control**



## **NXG- iGLASSBOT (Integrated Dry & Wet Wiping Suitable for Various Surfaces)**

**Vacuuming DC Brush Motor: 19000±5%/RPM (Strong Suction 2500PA)**

**Noise level: < 75dB \*Battery: Li-ion 600mAh, 14.8V \* Rating Power/Voltage: 80W/24V**

**\* Water Spray: Automatic/App Control, 4 frequencies (5/10/15/20s)**



## **NXG-VC ROBO (Intelligent Dust Collection and Cleaning ROBOTIC Station)**

**\*3-in-1 Function: Vacuum + Mop + Sweep (Automatic / Remote Mode)**

**Capacity: 300MI (Dust Box) 250MI(Water Tank)**

**300Min Running Time, 63dB Noise Level, NIDEC Brushless Motor.**



## **NXG: Smart UVC Towel STERILIZING Rack & Smart BODY DRYER**



### **NXG-STW (ABS + Aluminium Alloy Hanger - Wall Mounted)**

**Intelligent Voice Control**(English)/Touch Screen + Overheating Protection + Radar Sensing + Human Body Induction System, once someone approaches the machine within 4 meters, UV Function will stop working will restarts when the human leaves. A Large-Scale Top Shelf etc.

**Voltage:** 220 v / 50 Hz **Power:** 400-500W **Lamp Bead Life:**10000 h **Wavelength:** 260 - 280 nm

**Drying:** Hot Wind **Cold Air:** Natural – Internal Temp **Anion:** 1 hr Air Purification



### **NXG: ABS Body Dryer with Anion Skin Care & Strong Antioxidant Function**

**Cool Power:** 700W **PTC:** 500W **Heating Power:** 300W

**Rated Voltage:** AC220V **Rated Frequency:** 50 Hz **Ambient Temp:** +10°-30°

**Deep Waterproof Function 100% Away from The Risk of Electric Leakage.**

**Warm Air Nourishes The Skin & Takes Care of The Human Body.**



### **NXG-VC 2 Digital Vacuum Cleaner**

Brushless Motor - Bagless Strong Two Speed Suction (Colour - Purple) 2200mAh Lithium Battery

**Working Time:** 40mins (+10% -5% ) **Charge Time:** 4-5H **NOISE:** >68dB

HEPA Filter + Stainless Steel Cyclone + Washable Cotton Filters (H 13)

**Dust Cup Capacity:** 550ML **Vacuum:** 22 Kpa (+10% -5%)

## **NXG: AP-01 Air Purifier Tower Fan (3in1 Air Cool & Hot Wind + HEPA level 11 filter)**



HEPA 13 Filter Dust Free Fabric:-  
Remove 98 % of Dust, Pollen,  
Smoke, Odor, Mold Spores, and  
Pet Dander; Filter-out particles as  
small as 0.3 microns and larger  
and filters air pollution of PM  
2.5.screen....

### **Product Specifications:**

**Material:** HDPE ( ABS )

**Colour:** White/Silver/Blue

**Motor:** DC Brushless Motor

**Cool Wind Speed:** 1-10 Gears

**Cool Mode Power:** 5-35w±10%

**Sound Level in Cool:** (db)39.3-53.6(db±5%)

**Hot Wind Speed:** 1-3 Gears

**Max Air Flow:** (M3/h)Cool Mode: 11880M3/h ± 5%

**Timer:** 1 to 9 Hrs

**Body Oscillation:** 80 ° Wide Spread Automatic Oscillation

**Coverage Area:** (M3):15-25m<sup>2</sup>

**Distance of Wind (M/s):** 1m

**Control Ways:** HD Soft Touch / Remote with LED Panel

**Product Size:** 1030\*265\*185mm(H41" )

**Power Cord Length:** 1.65-1.8 m

**Voltage:** 220-240v/100-125v

### **Advantages:-**

\*Safety: No fast-spinning blades safe for kids/pets, easy clean& maintenance.

\*Healthy: Fanis optimized by air multiplication technology, which is 100% natural wind in front of the body.

\*Warranty: One Year During Warranty : If the machine is out of order (except for human -made damage),we will provide free replacement parts such as the main engine and air outlet.

\*Filter Life Span: The replacement filter should be replaced every 3-6 months depending upon the air quality in your area.



**Single Refill Can**

**NXG: Automatic Aerosol Dispensers With OR Without Remote**  
**DAY/NIGHT 24 HRS SPRY-I-II-III**  
**TIME INTERVAL OPTIONS-5-10-15-30-1hr 2hr 3hr**



**Double Refill Cans**

## Shoe Cover Dispensing Machines Automatic/Foot Operated



**NXG: Thermo Shrinkable Automatic Shoe Cover Machine**  
Capacity of One PVC Roll – 1000 Times

**NXG: Foot Operated Shoe Cover**  
Capacity Of 100pc Aluminium + PE



## Automatic Shoe Shiner Machines with Sole Cleaner



**NXG: Fully Automatic Shoe Shiner Machines with OR without Sole Cleaner**



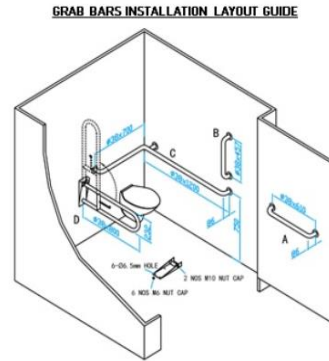
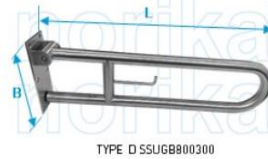
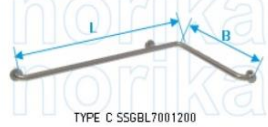
**NXG: Wall Mounted Horizontal Baby Changing Station**  
(HDPE & SS 304)

**NXG: Child Protection Seat**  
(HDPE)



# SS Corrosion and Rust Resistant H/W : Accessories for Visitor's & Patient's Washrooms

**\*Sizes can be customized as per requirements**



**NXG: Stainless Steel Ligature Resistant Grab Bars:  
Straight, L Shape & Swing Type**



**NXG-Shower Seats  
Double/Single Folding Seat with Phenolic Top perfect for  
minimizing the risk of slips and falls**

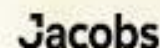
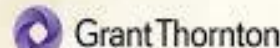
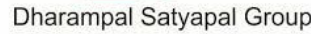


**NXG: Toilet Paper Holders (Multiple Options)  
With or Without \*Phone Shelf \*Flap \* Double/Single**



**NXG: Foldable Multiple Towels Rack with Coat Hooks**







# NXG SOLUTIONS

ONE STOP | INNOVATIVE SOLUTIONS FOR NEXT-GENERATION....



## Team of Professional/Skilled Members:-

Committed with Our Company's Philosophy of "Embracing Innovations + Sustainable Environment".  
Abide by The Enterprise Spirit of "Focusing on The Intelligence + Excellent Quality & Caring Services".

Best Regards With An Anticipations Of Healthy Associations

NXG SOLUTIONS

WWW.NXGS.IN

HO: C2C/2/55 ; ANAK PURI , NEW DELHI - 110058 (INDIA) OPP. ORCHID HOSPITAL

\* Paras Malhotra (Founder-Creative Director) M: +91-9999342223 E: [paras@nxgs.in](mailto:paras@nxgs.in)

\* Kamal Malhotra (Consulting Director-Projects) M: +91-9911897731 E: [kamal@nxgs.in](mailto:kamal@nxgs.in)

**\* Let's Go-Green.....**

