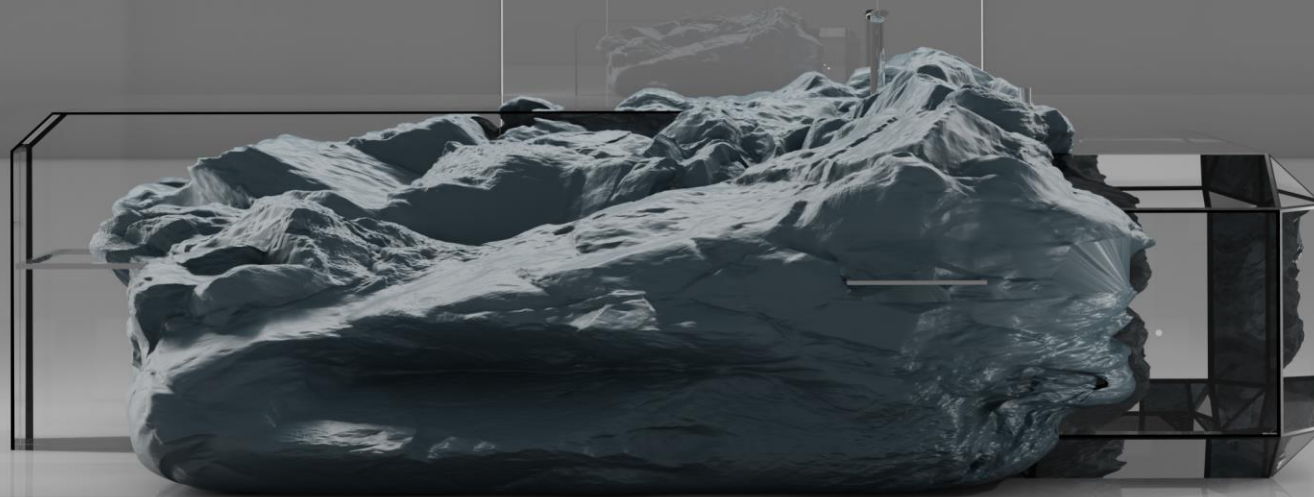


River Basin

Luxury Personalized Washbasin



Context

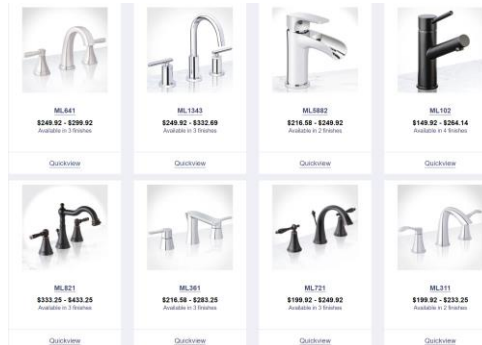
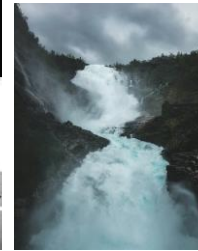
The problem with current washbasin designs is that they have not modernised vastly, In today's date where technology is developing so fast and new products with improved designs and functionality are being launched every day, the washbasins and toilets have been left far behind in this race of development and aesthetics. The washbasins lack features, aesthetics as well as versatility. The washrooms lack the ease of cleaning, lack of premium materials and lack design language as well. With constantly developing technology I believe the washrooms need to be more engineered and developed.

Hence, my inspiration of developing a well-designed luxury washbasin packed with features to ease the lifestyle.



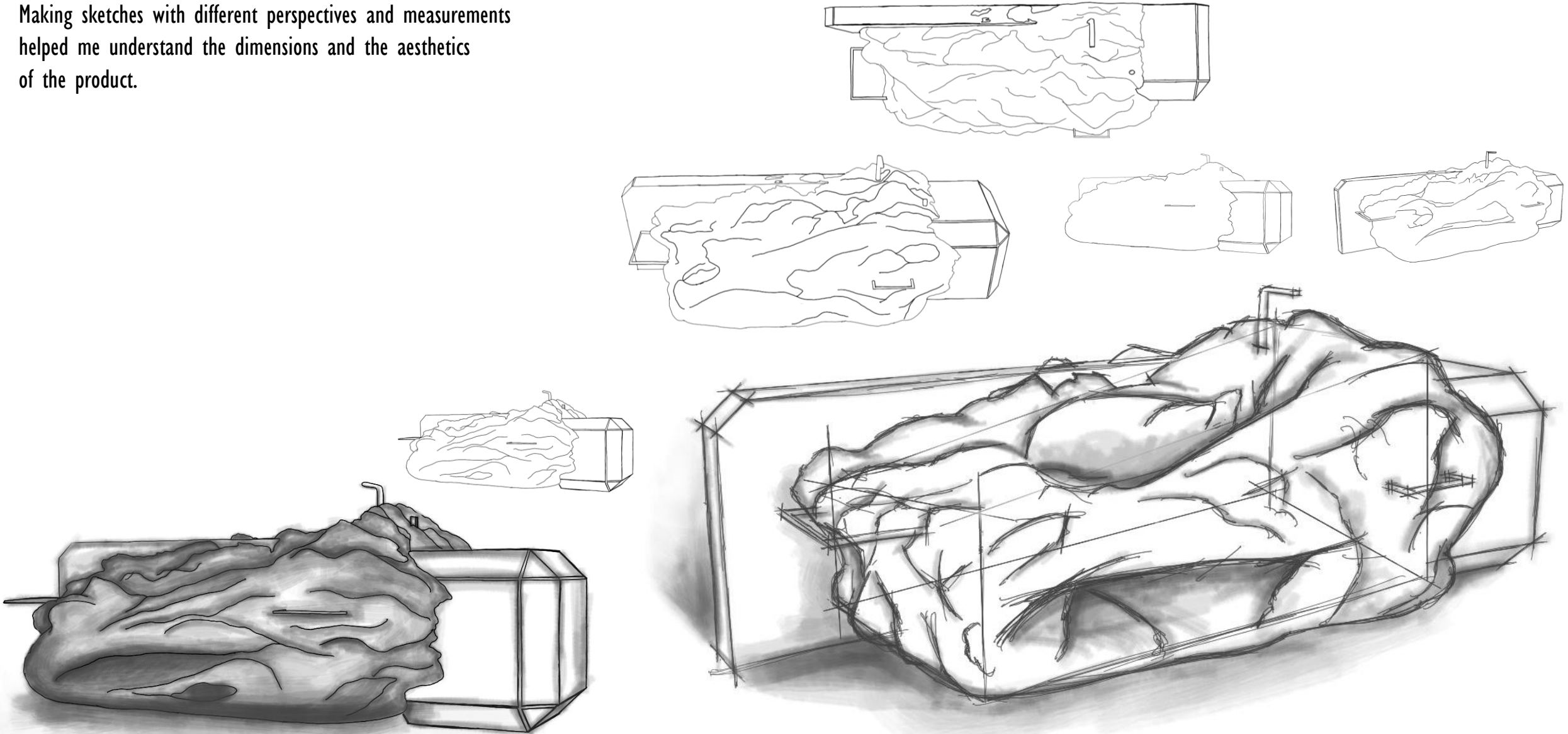
Research

The current Faucets and washbasin designs from leading brands such as Artize, Kohler, Jaquar, and Miseno lack features in their design which does not provide solutions to areas that require problem-solving, hence, faucets designed by the famous architect Zaha Hadid inspired me to design a minimalist faucet with uncommonly seen operational designs. Zaha Hadid's minimalistic curvy design allows the water to be visible when the faucet is turned on leaving no water trails and no droplets on the basin which led to further research on different kinds of textures of stones and marbles that could help elevate the aesthetic of my designs. The artworks from a famous glass artist, Sergio Redegalli gave me an understanding of glass textures and reflections that enabled me to manipulate the shapes of glass to make a variety of reflections which helped me create my own texture for my product. Inspirations were taken from trending blogs and online articles which inspired me to use lighting to colors and textures that played an important role in the designing process to elevate the aesthetics of the faucet.



Development

I have experimented with different types of sketches like 2D and 3D. Making sketches with different perspectives and measurements helped me understand the dimensions and the aesthetics of the product.

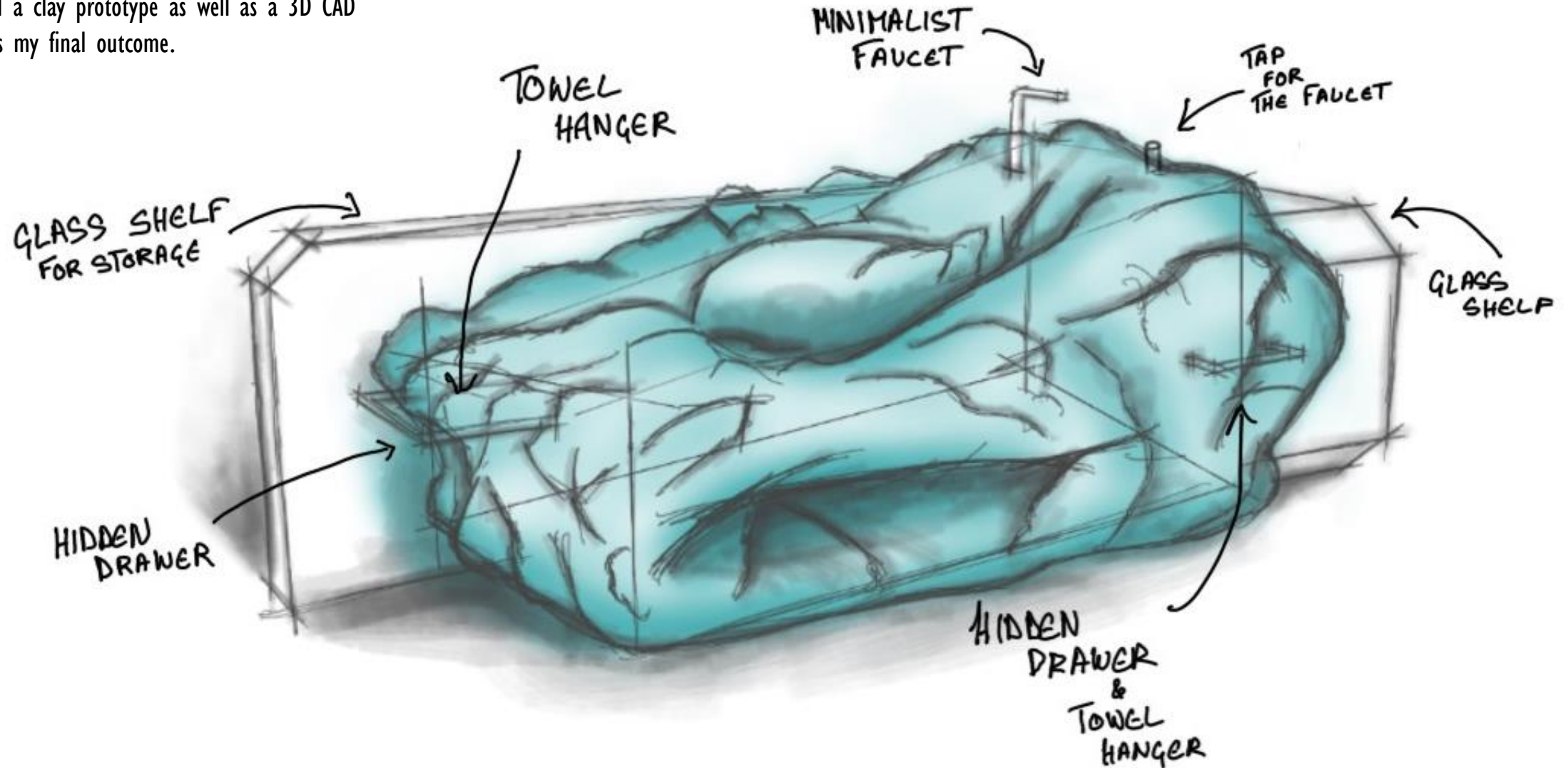


Planning Progress &

Production

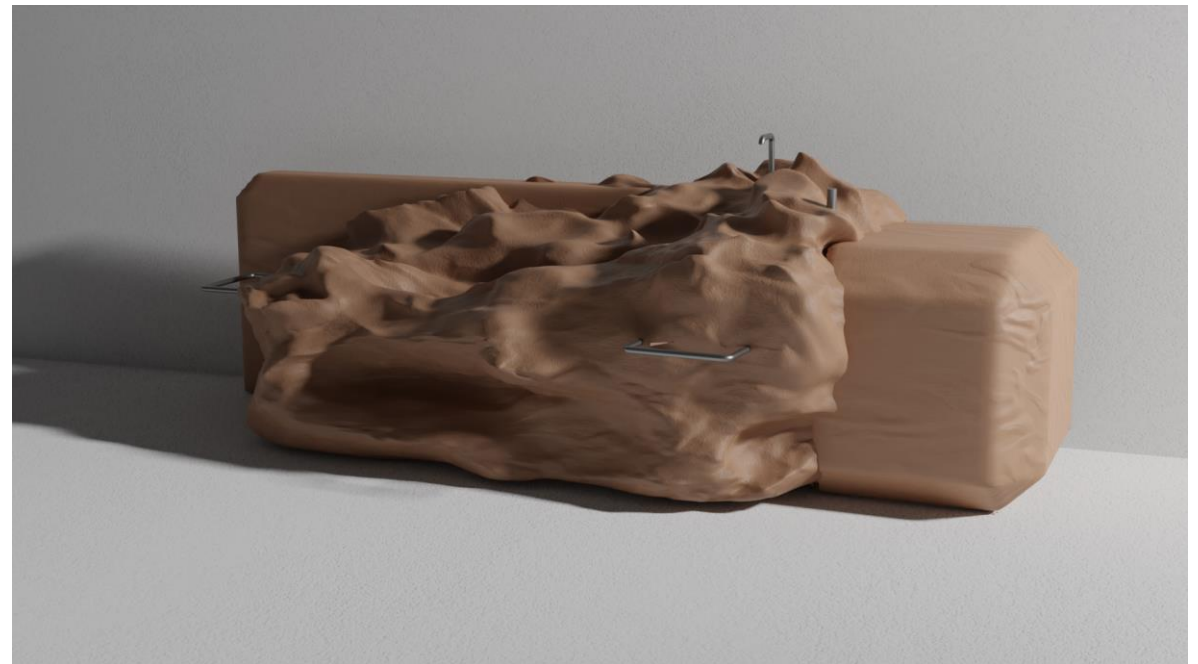
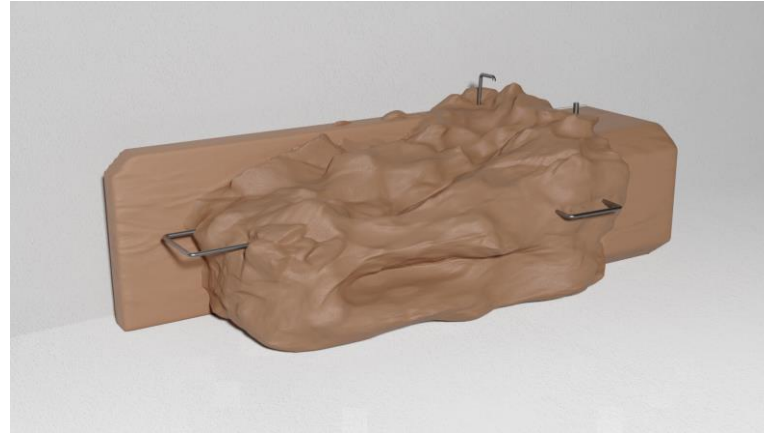
I have planned my product well by making notes, sketches and developing blueprints of my product as well as deciding its feature sets and the concept of how it will operate.

To progress into the planning and understanding I have produced a clay prototype as well as a 3D CAD model as my final outcome.



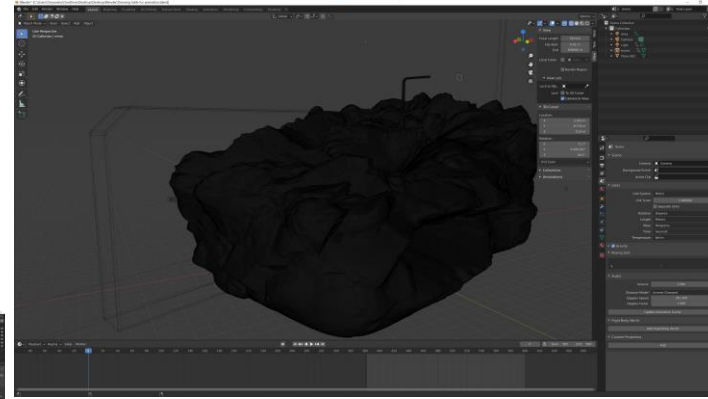
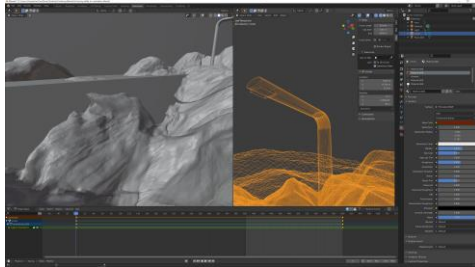
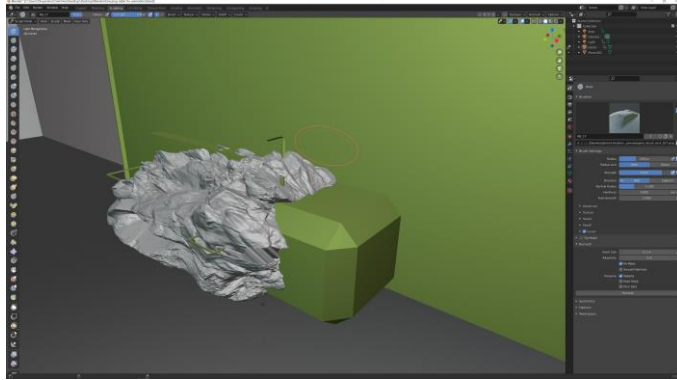
Development

I have developed a clay & Wire prototype for a better understanding of the dimensions, perspective, and aesthetics in 3D. Additionally, I have experimented with different lightings on my prototype to help me understand how the product will look like in large scale with different lightings.



Development

I developed 3D CAD models using different software with realistic measurements and have also experimented with the environment to understand the aesthetics of the product in different environments



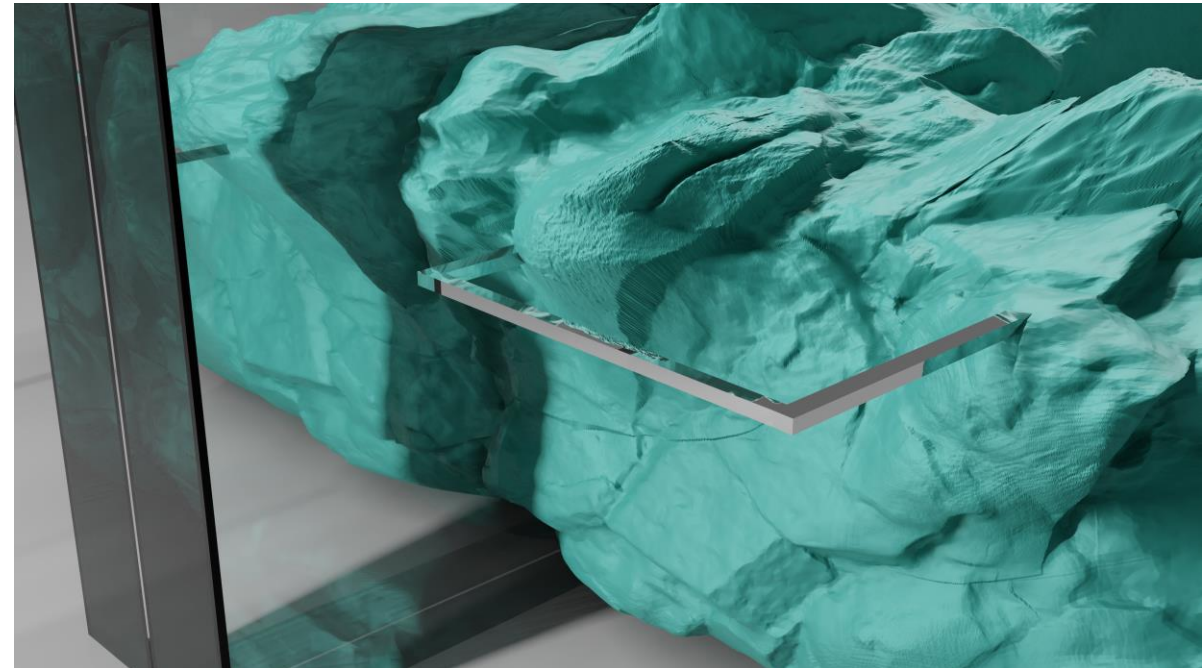
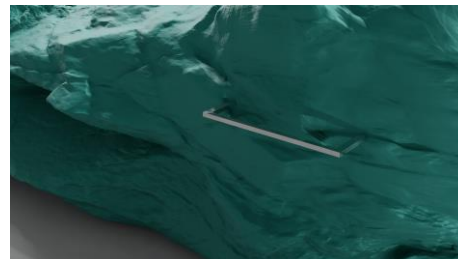
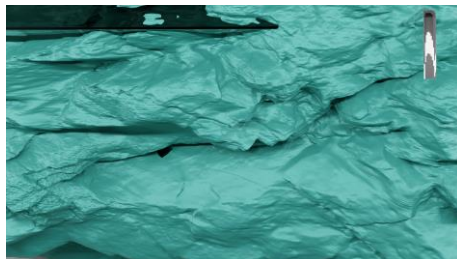
Problem Solving

Poor aesthetics and difficulty in cleaning are the most important features in designing faucets that affect user experience significantly.

Waterfalls and stones that are seen in nature have led me to create a design that not only is modern and user-friendly, it is also useful in terms of storage options while maintaining its aesthetics since aesthetically pleasing bathrooms can uplift the mood of users significantly.

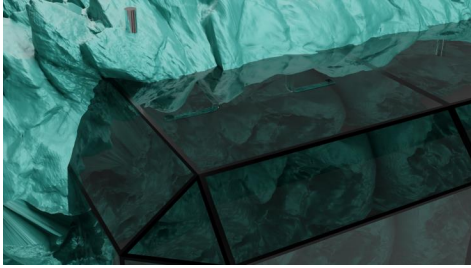
Another problem that is often overlooked is to make the product easier to maintain and clean.

The only solution to the problem that seemed feasible to me was to modify my material with a shiny ceramic coating that could be cleaned just with a wipe which not only does its purpose, it also uplifts the aesthetics of the product.

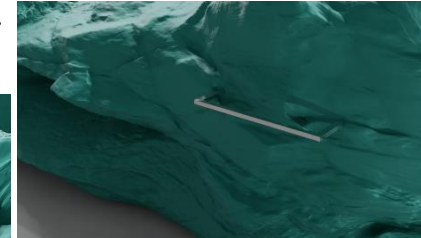


Product Features

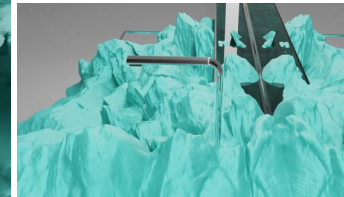
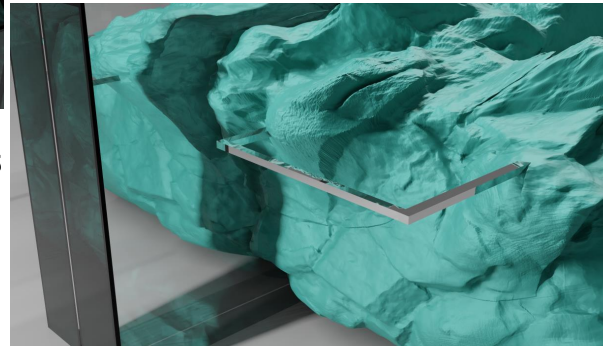
Glass shelf for storing everyday use products.



Hidden drawers for storage with a place to hang towels.

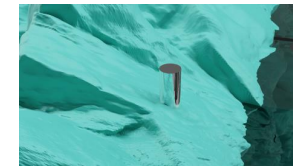
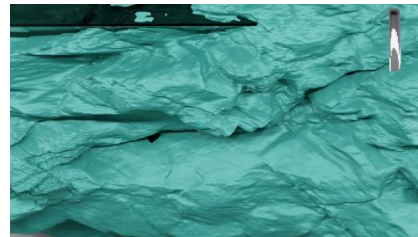


Bottom firing speakers with Bluetooth connectivity.



Faucet designed keeping minimalism as priority.

Water flows from the faucet, falls down on the stone and flows like a river towards the drain through the valley like shape of the product.



Tap for the faucet
Turning left increases temperature.
Turning right decreases temperature.
Pushing it down will turn on the faucet for 15 seconds to avoid wastage of water.



Custom colors
as Desired

Final outcome

