

Process portfolio

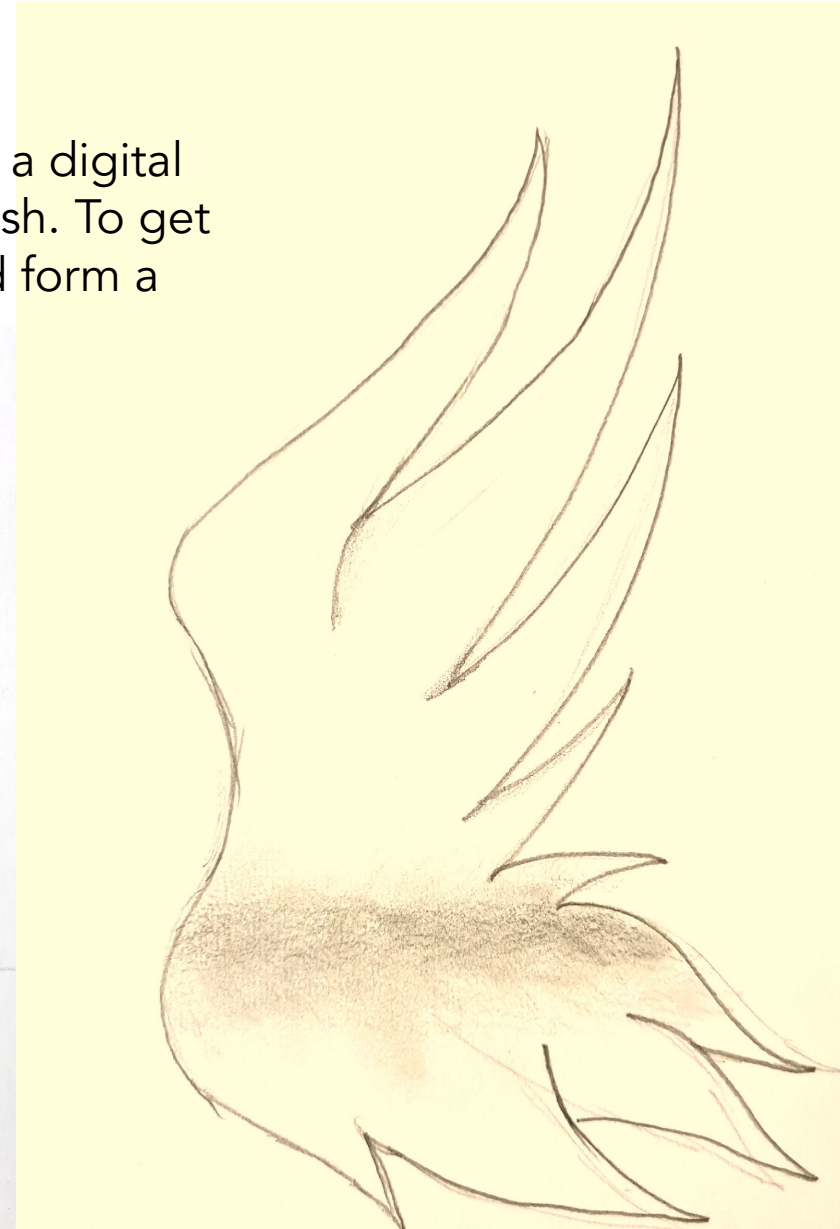
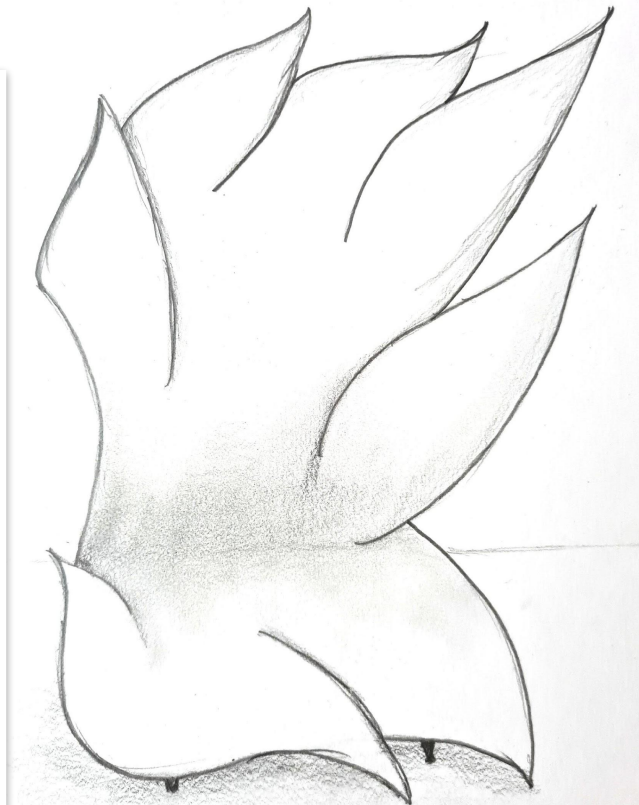
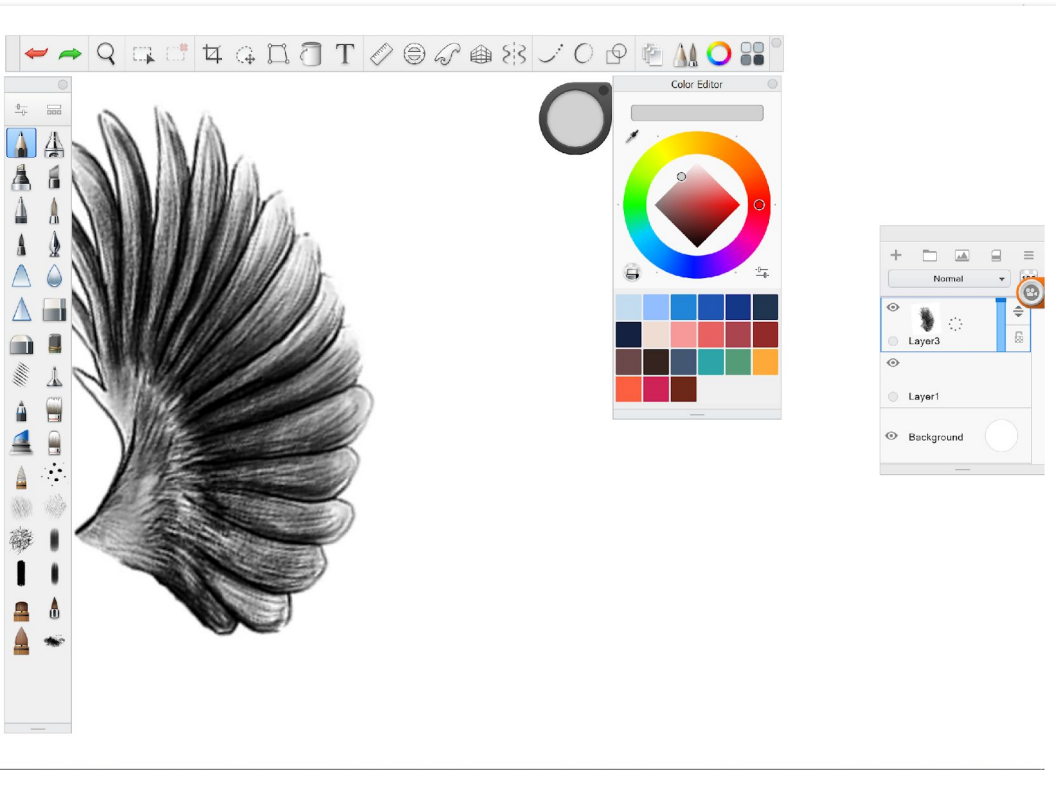


These are scanned images of
my sketches on a Marker Paper

Medium – Charcoal
Paper: Canson

Exploration of medium and shapes

for my first artwork whose inspiration was a bird wing which I sketched using a digital workspace, the software Autodesk Sketchbook pro and the Hindu lord Ganesh. To get my ideas more clear and to experiment I started to modify the bird wing and form a shape of my own which was inspired by the wing and showed a little similarity between the lord Ganesh.





After some graphite sketches I started to experiment with different mediums to see which medium will suit the best for my artwork. I experimented with colour pencils and started to sketch the layout in 3D form. With the help of 3D drawing it helped me identify the material to be used for the sculpture as it gives an idea how will it look like



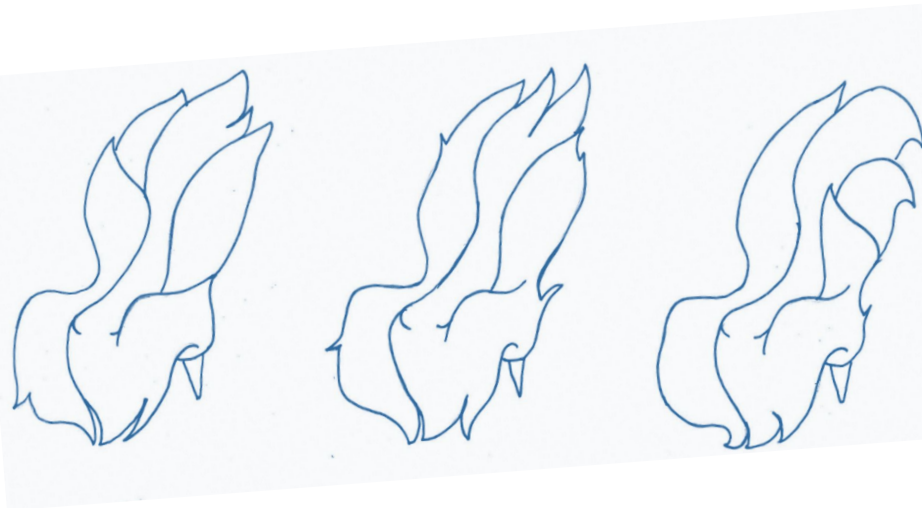


Ganesha,
Hindu deity

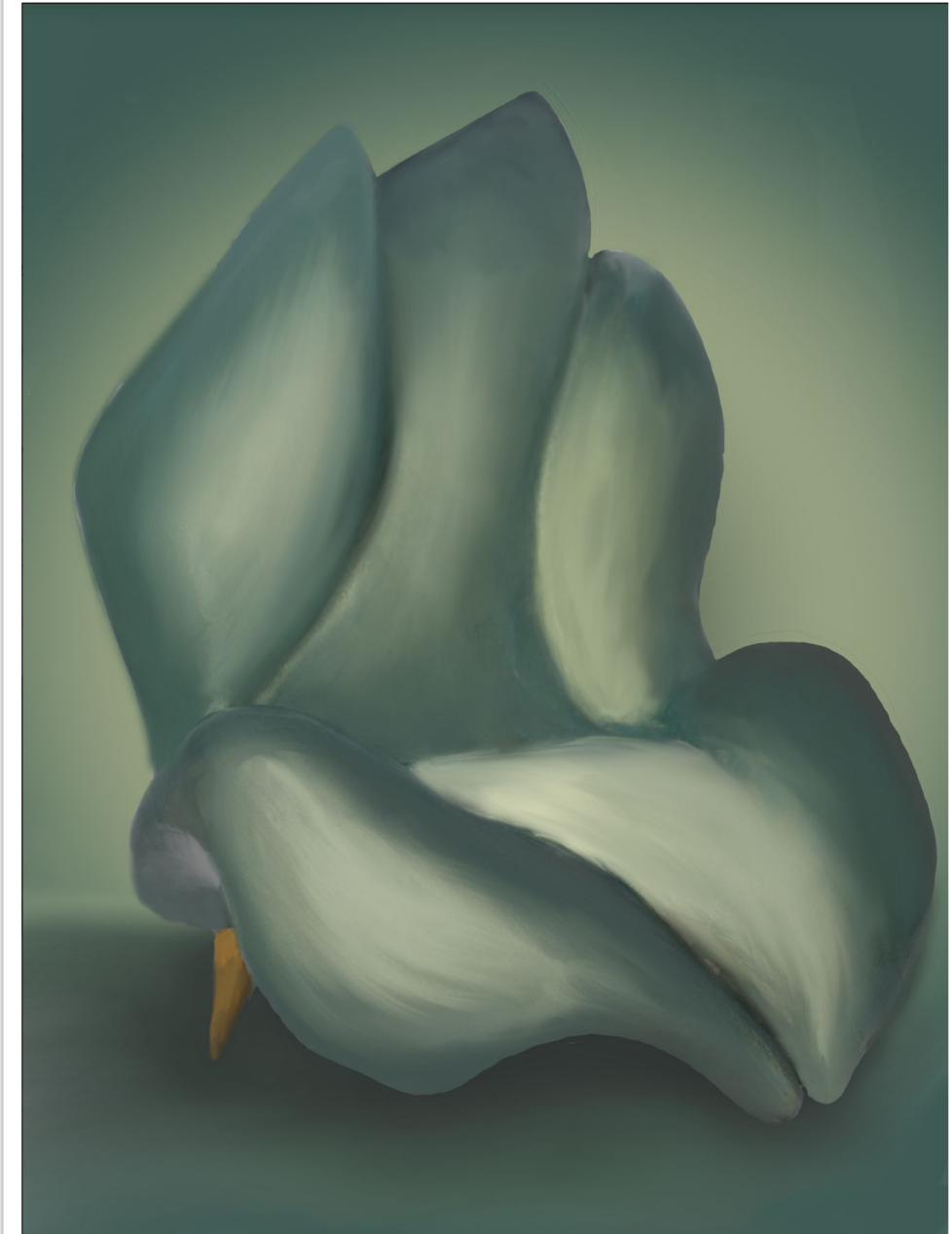
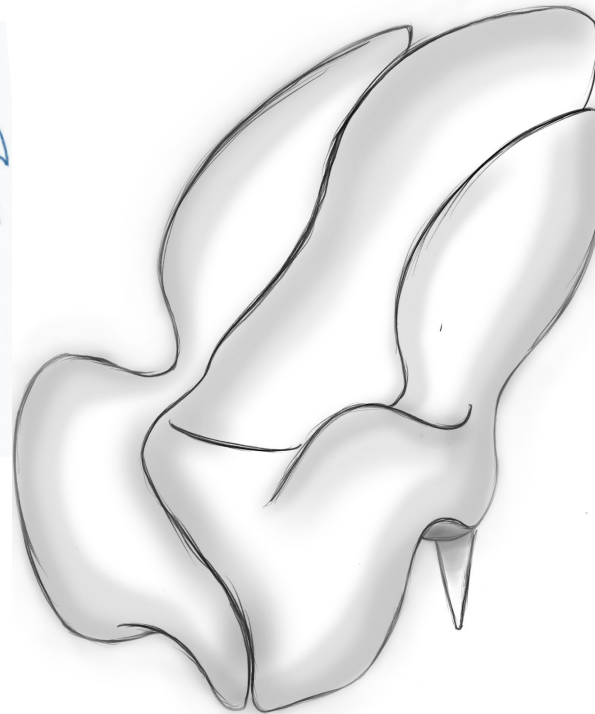
From sketching wings to forming it into 3D I started to experiment with the depths of a chair and how can I put it through a wing and then I started to design the chair

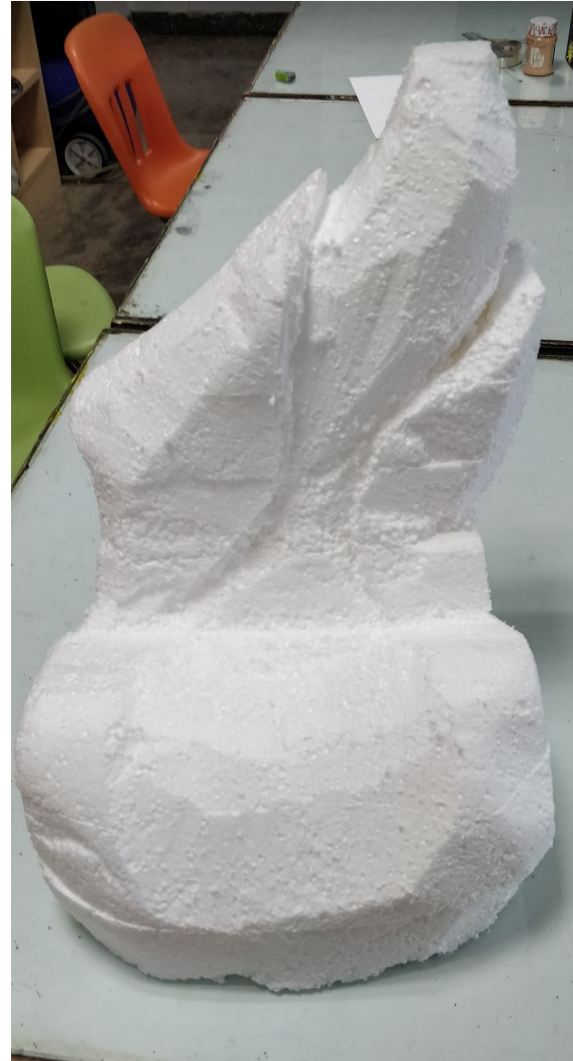
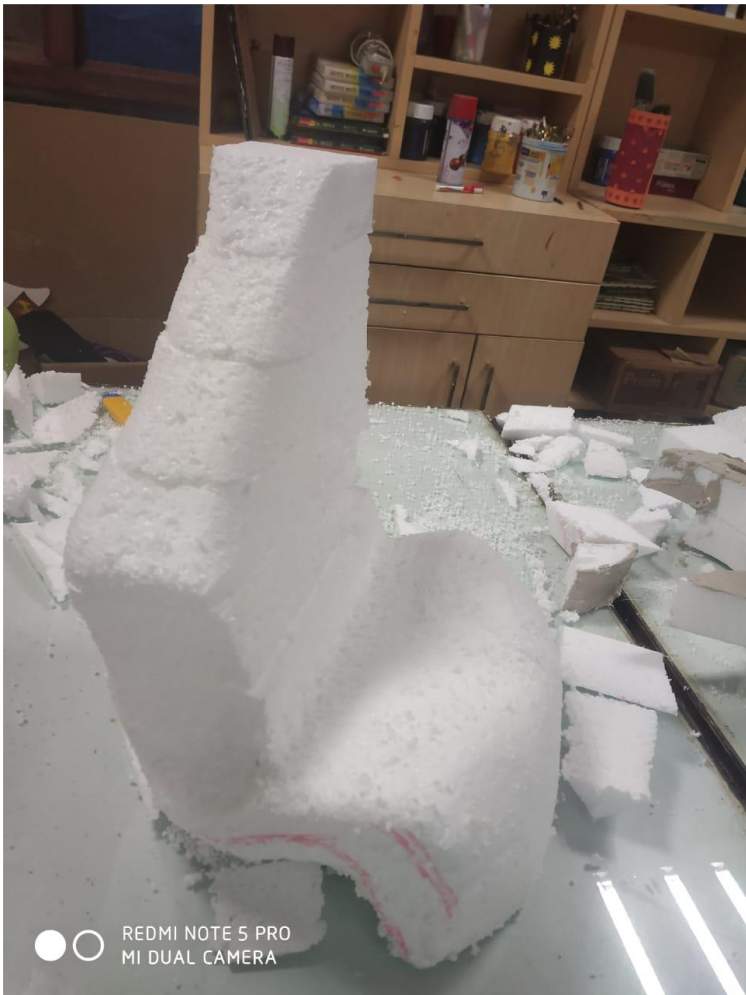


I also experimented with oil paints with the help of a digital workspace. Sing the tools like oil paints and different types of oil brushes it helped me paint exactly what I wanted.



These are scanned images of my sketches on a Marker Paper





To explore different mediums I started to work with thermacol as it provides a great level of control and its lightweight makes it easier to work with. I made a block of thermacol using thermacol sheets and then I started to carve on the block.

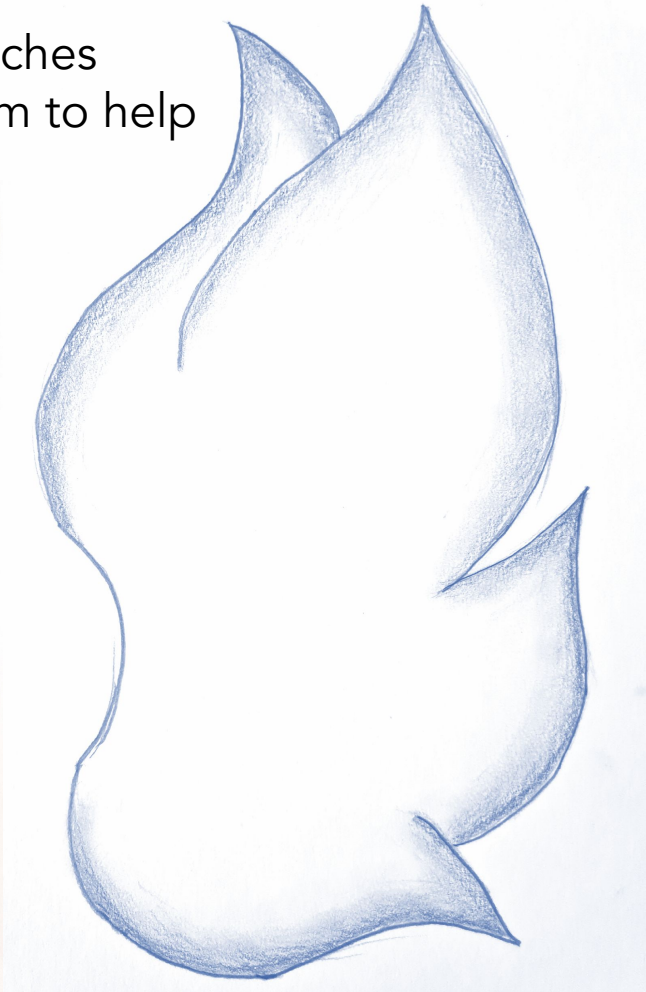
To add more finish and weight to sculpture I explored the material plaster. Plaster helped me to gain smooth textures as well as strength in my sculpture.

When the plaster was dried I sanded the sculpture with different kinds of sandpaper to achieve the best smooth finish.

I also experimented with different kinds of paints to see which one can make my sculpture relate to the motive and the inspiration behind it and make it look exotic aswell. I chose a mix of green and sparkly blue metallic wall paint to add texture and design to my artwork.

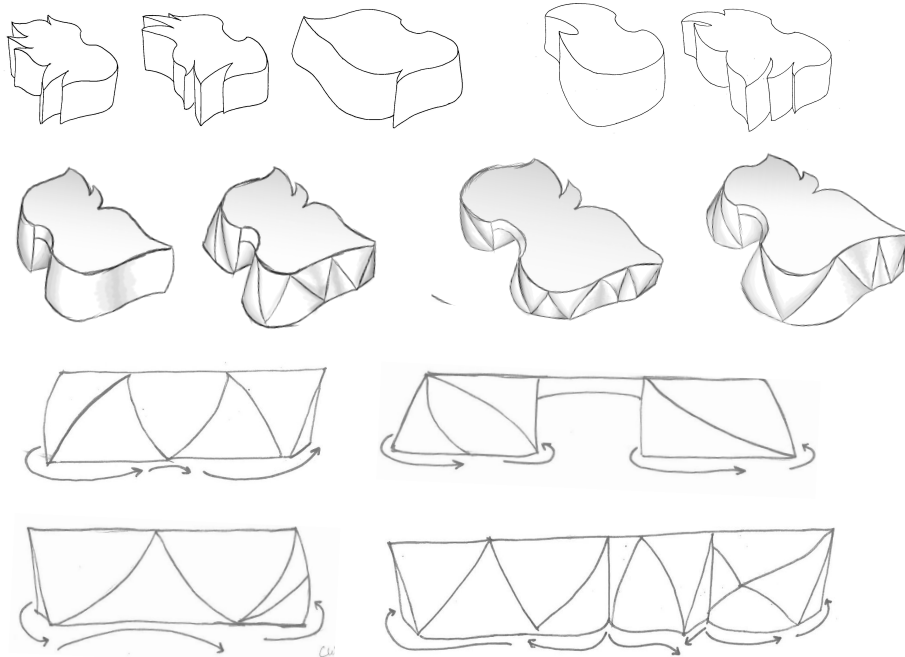
For my second artwork in which I aimed to form a table inspired by the bird wing design I first simplified and modified the wing shape and formed my own layout which would suit a table and make it easy to use aswell.

After some experimentations with different sketches I then started sketching my layout into a 3D form to help myself in understanding the texture and depth of the medium

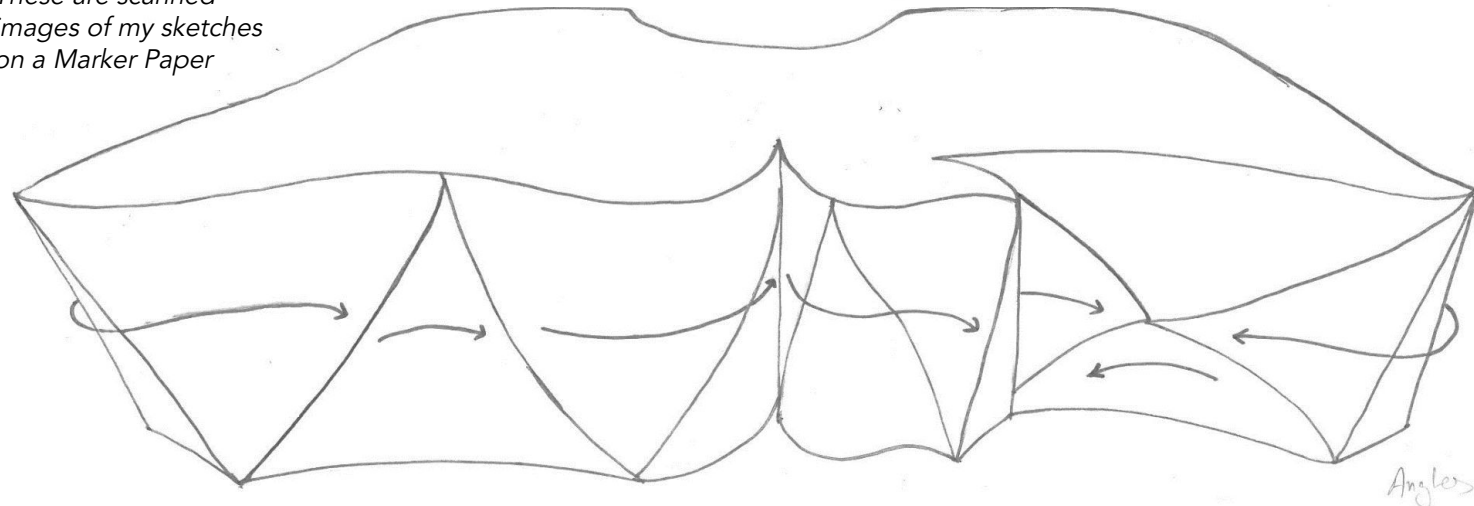


While office spaces are becoming more and more trendy, desks and tables have mostly remained standard and mundane looking. These tables often do not look impressive and do not go with the trendy office spaces. So I aimed to design an office table which is not only big enough for all the objects but also look stylish and impressive to the eyes. The initial designs were inspired from bird wings. I sketched and shaded the designs into 3D forms and performed contouring for a better understanding of the finalised design.

With a lot of sketching and experimentation in different angles I finalised my final layout for the sculpture. With the help of a digital workspace I started to render my ideas for further better understandings

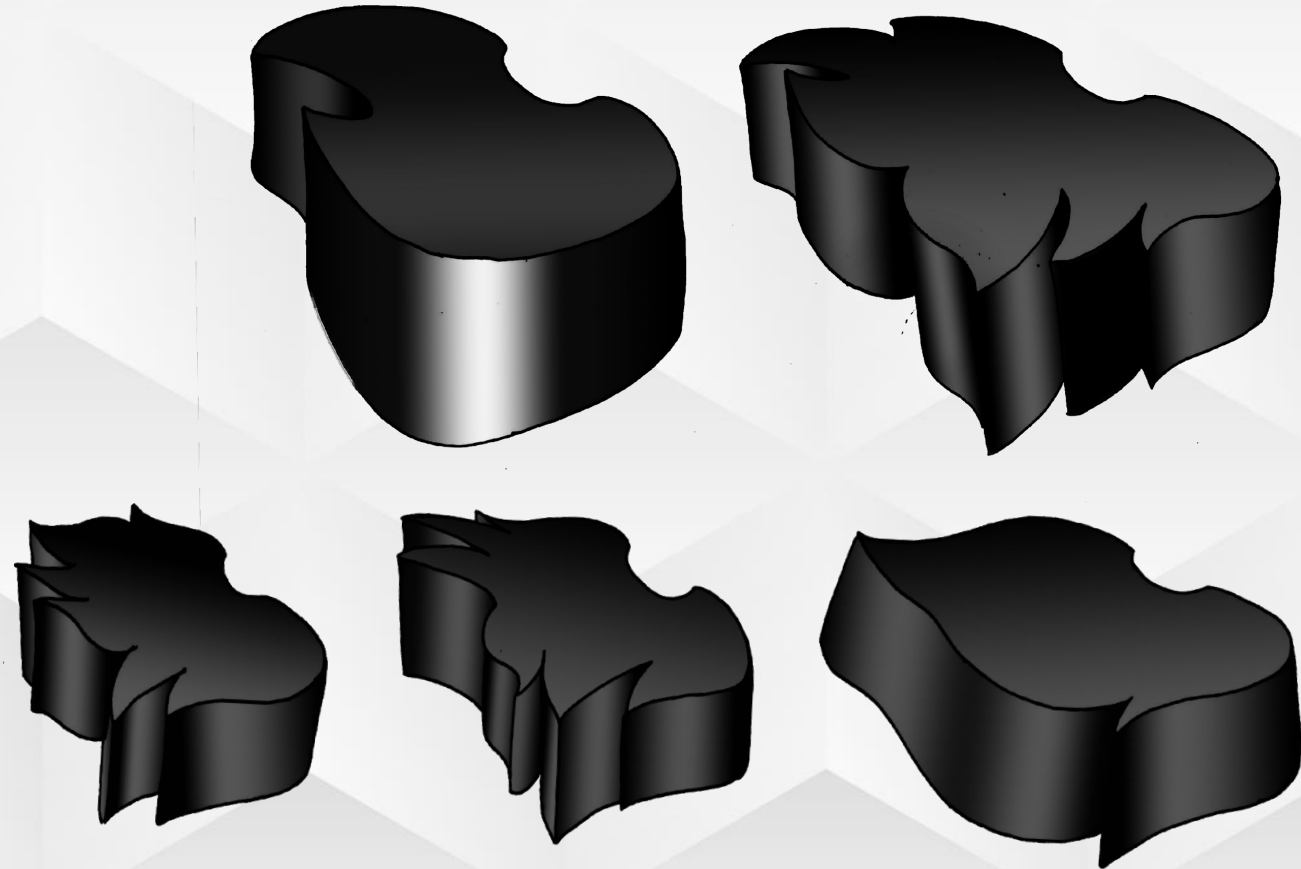
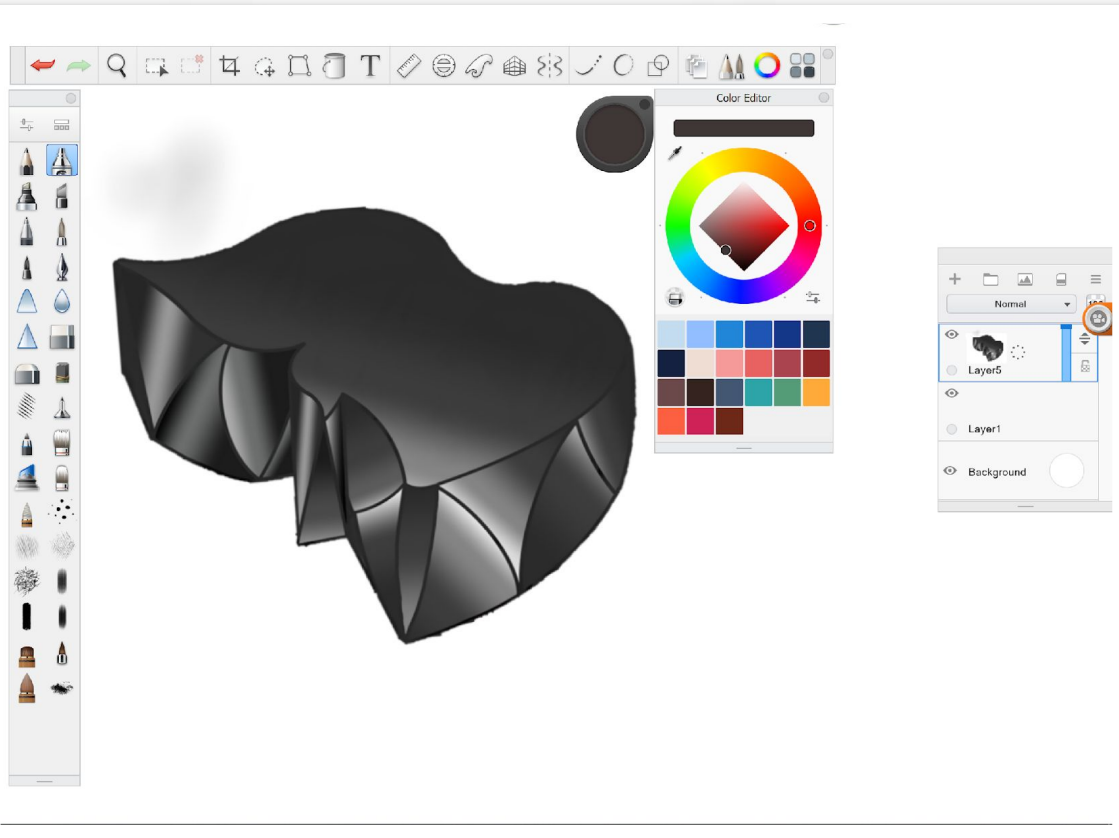


These are scanned images of my sketches on a Marker Paper



Rendering

With the help of my skills in digital medium I rendered the layouts and finalised the final layout with the help of the software Autodesk sketchbook pro. I used different different tools such as the air brush and gradient tools to achive a metallic finish which would help me understand what kind of medium should be used while making the sculpture to achieve a metallic finished look.



I started to Carve on Thermocol blocks to form the base of the sculpture. Performed angular cuts with the help of a big knife in order to achieve the shape shown in the rendering. Once the base was formed, I started adding weight to it by coating it with plaster in different angles, then modelled the sculpture to my needs. I also smoothened out the rough edges and gave it an overall smooth finishing using a sandpaper and some other tools like a file.

In the end I also experimented with varnish to help add a shiny and lustrous texture to the table which would make it appropriate for a professional environment. The sharp angles of the sculpture visible in the photographs were made using plaster, which after applying sandpaper helped achieve proper cuts and finish.



Formation of angular cuts

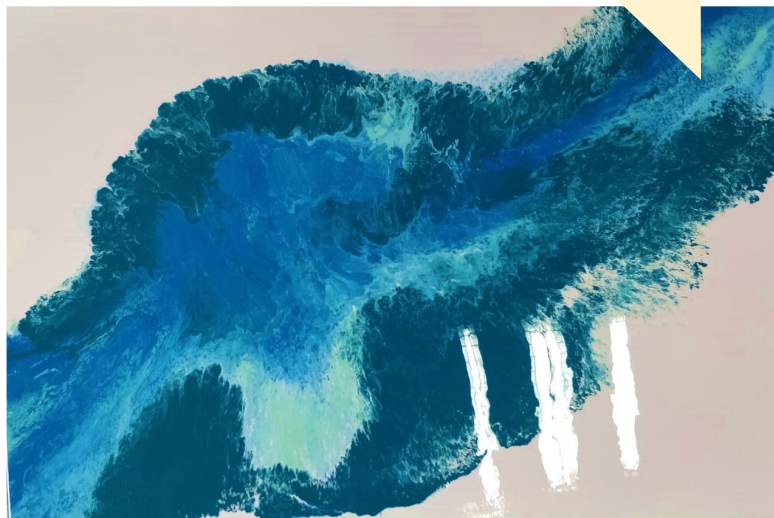
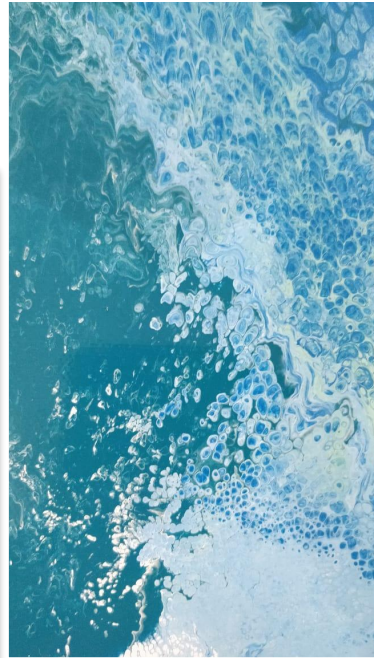


Thick coating of plaster

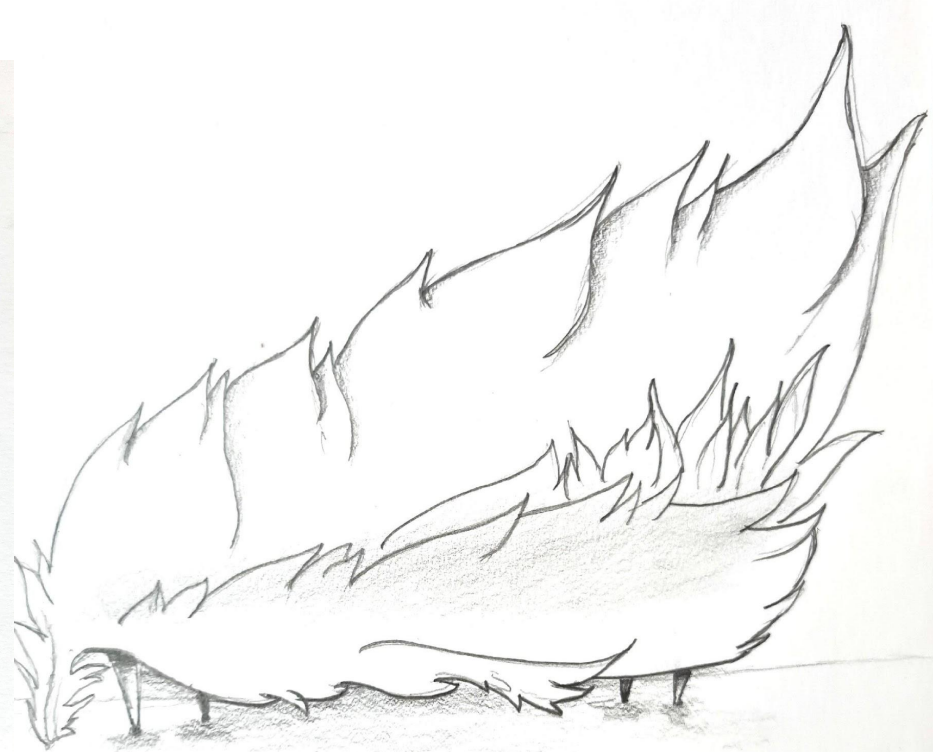


I experimented and explored oil paints and experimented with wall enamel paints and used the technique of pouring to achieve such textures to my paintings. With the help of wet tissues I also experimented with them to achieve a land/rock like texture which gave my painting a little depth as well. I also learnt the technique of using a hair drier to form such textures and help mix the paints without touching them and I also used drops of oil to form small paint tear textures to my paintings.

Acrylic poured paintings to form a landscaped river



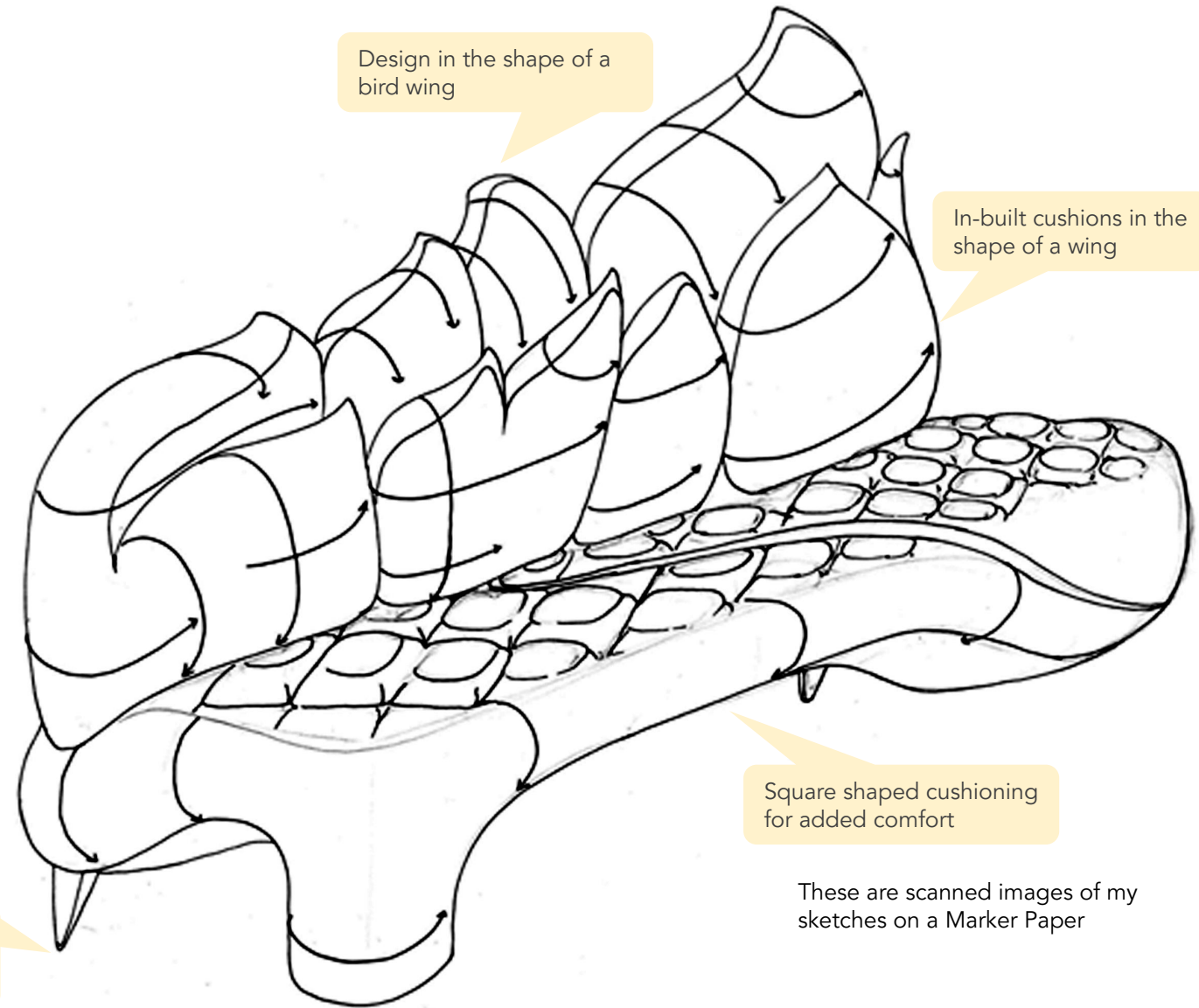
To form another seating sculpture I took my inspiration from the wing of a swan. I took my time to analyse the wings and the form I also made digital sketches using different tools like charcoal, graphite and marker tools provided by the software which helped me understand different materials as well as helped me understand the digital medium as well. I then again came back on paper for some rough sketches for the layout and sketched in 3D for a better understanding of the sculpture's layout



As One of the commonly used methods to create a comfortable and luxurious seat for a car is diamond quilting. I wondered why the sofas makers do not use diamond quilting. Hence, the thought of designing a sofa with diamond quilting that is comfortable yet luxurious came to mind. Additionally, inspiration from a bird's wings was taken for the back rest to add to its grandeur.

My aim was that I wanted to not only design a sofa inspired by the theme of wings but also to add extra comfort for the people sitting on it. I used 3D sketching to get my ideas on paper for clear vision and potential execution.

This design of a sofa has a square shaped stitching on the seating area and it reclines a bit as well which adds to its comfort. The back rest area has two parts to it. The first part is to support the seating posture of a person and the second part is to add beauty and grandeur in line with the design of a bird wing.



Back legs are slightly shorter than the front legs, which provide a slight recline for relaxed seating

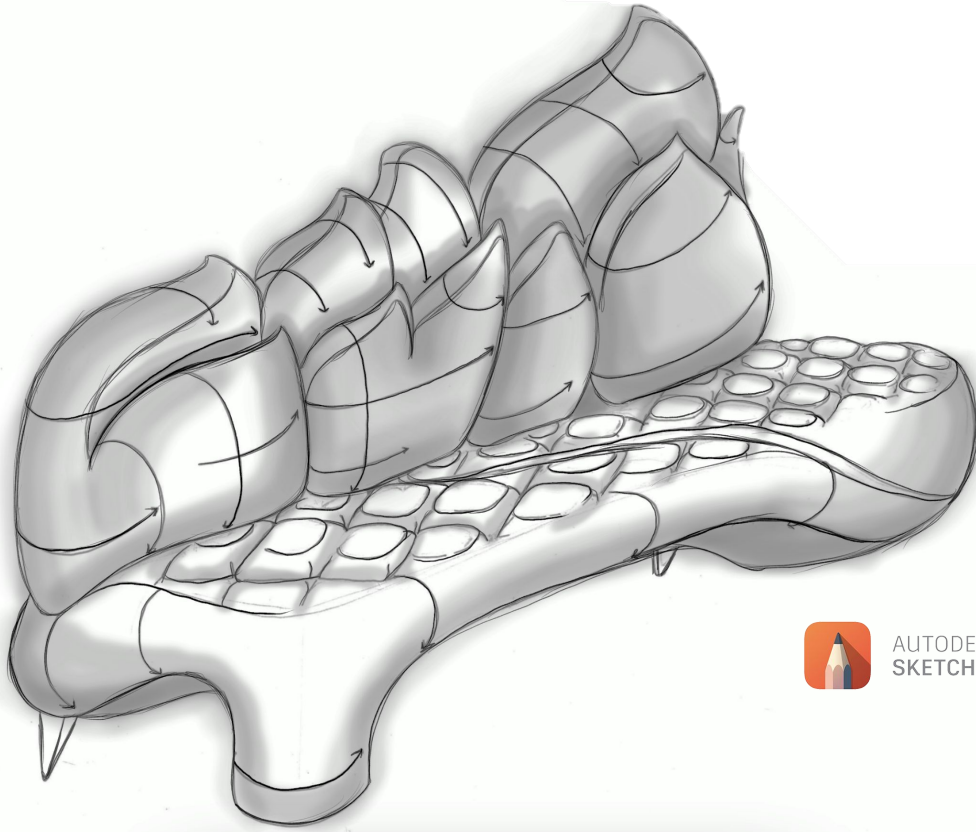
Square shaped cushioning for added comfort

These are scanned images of my sketches on a Marker Paper

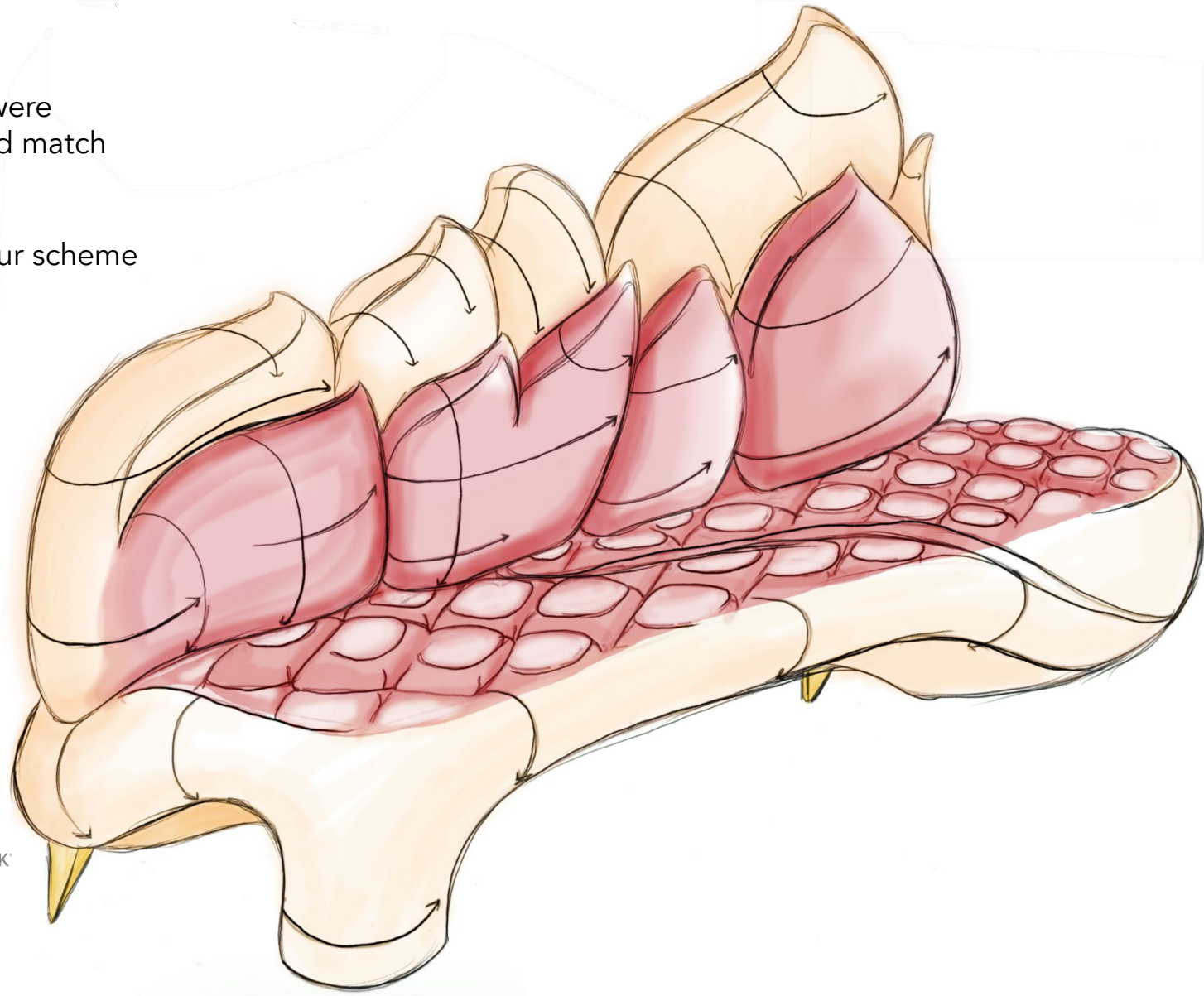
Rendering

In order to understand the colours better, digital designs were sketched to experiment with the colour schemes that could match the sofa in a way that brings out the best of it.

After multiple experiments, reddish brown and beige colour scheme was finalized



AUTODESK
SKETCHBOOK



Development

Carved on thermocol sheets and shaped it to my needs. Used a thick layer of plaster on top of the thermocol as the base of the sculpture.

The plaster helped add the square shaped cushions on the seating area. It was then smoothened using different levels of sandpaper to achieve a finished sculpture.

In the end I Painted the sofa with a thick coat of enamel paint to achieve a glossy look on the sofa. The colour scheme has been inspired by the colours of a sparrow's wings.

Carving on thermocol sheets pasted together to form a block



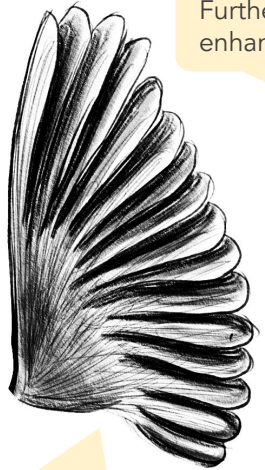
Experimentation with Emulsion paint to add further finish



Formation of square shaped cushions

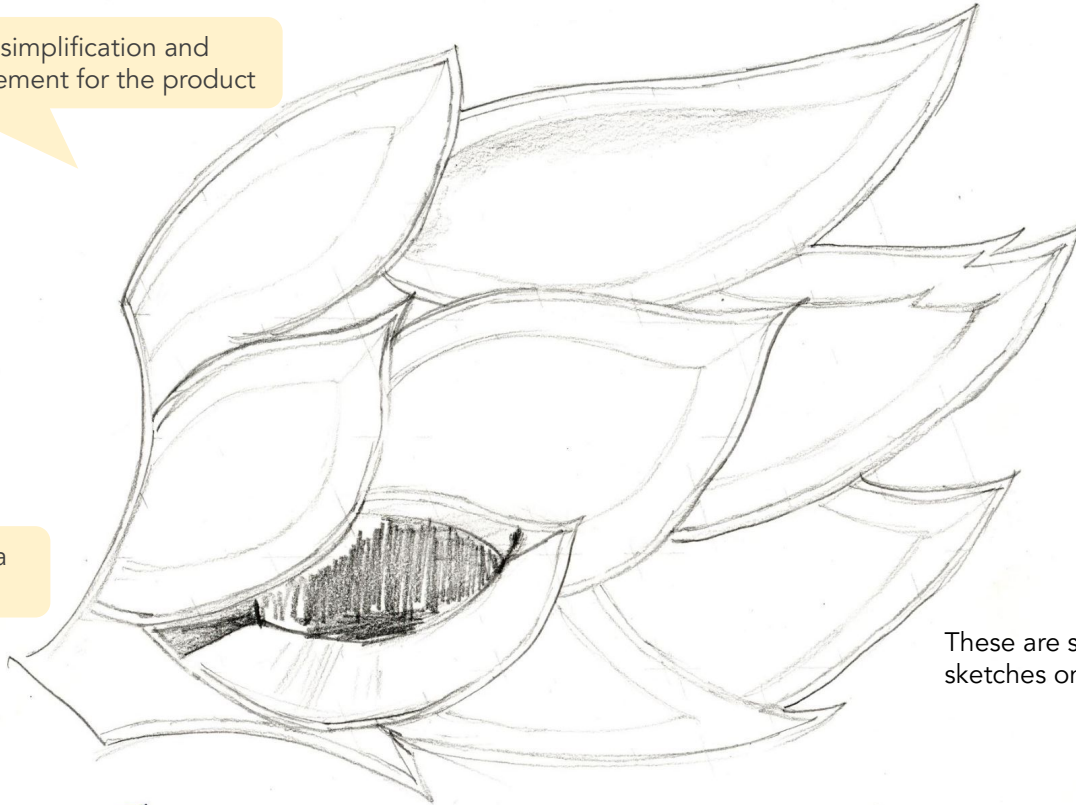
As Modern houses lack space. Hence, multipurpose furniture and items become highly vital.

My aim was to design a multipurpose shelf which can be used for many things when manufactured in different sizes. This is a shelf which has been inspired by the layers of feathers on a bird's wings. The shelf can also be used as a room separator (e.g., dressing area) and a showcase with enough space for small lamps, vases and photo frames to be placed in it. I started with my analysis of bird wings with digital sketching and aswell as colour pencils to understand all the different layers of the bird wings. I then simplified and developed my own shape which would suit the sculpture.



Initial inspiration – wing of a sparrow

Further simplification and enhancement for the product



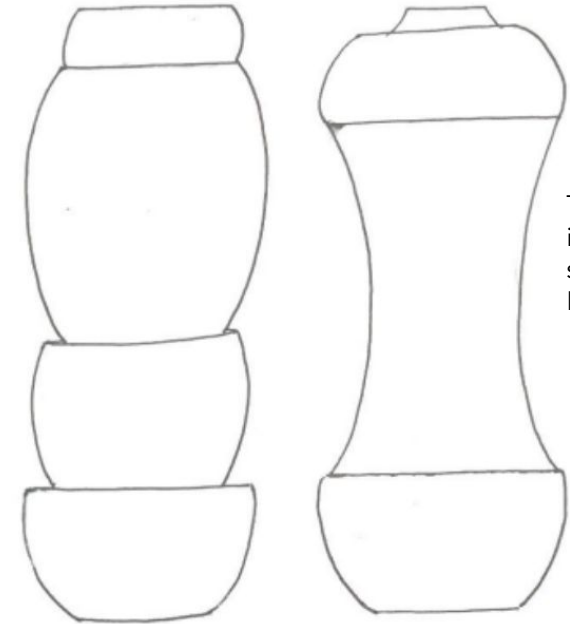
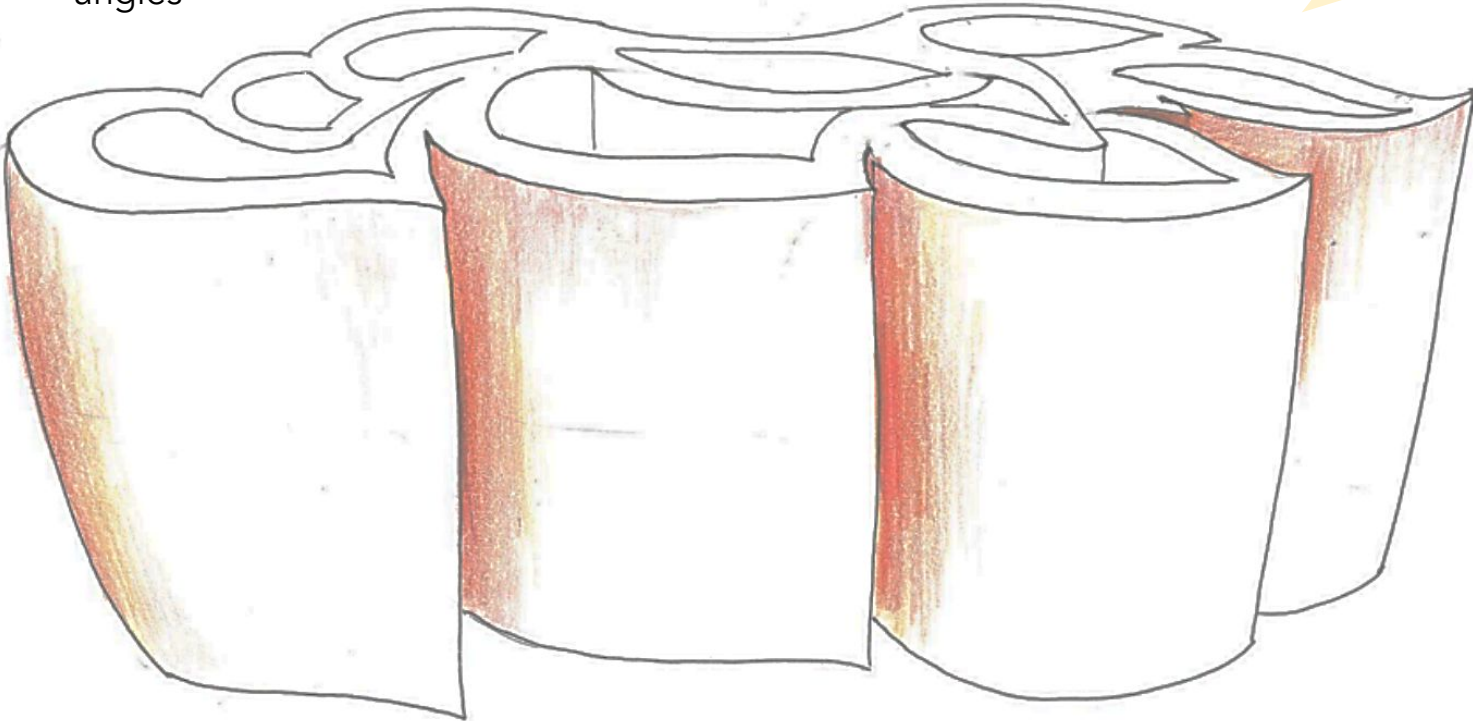
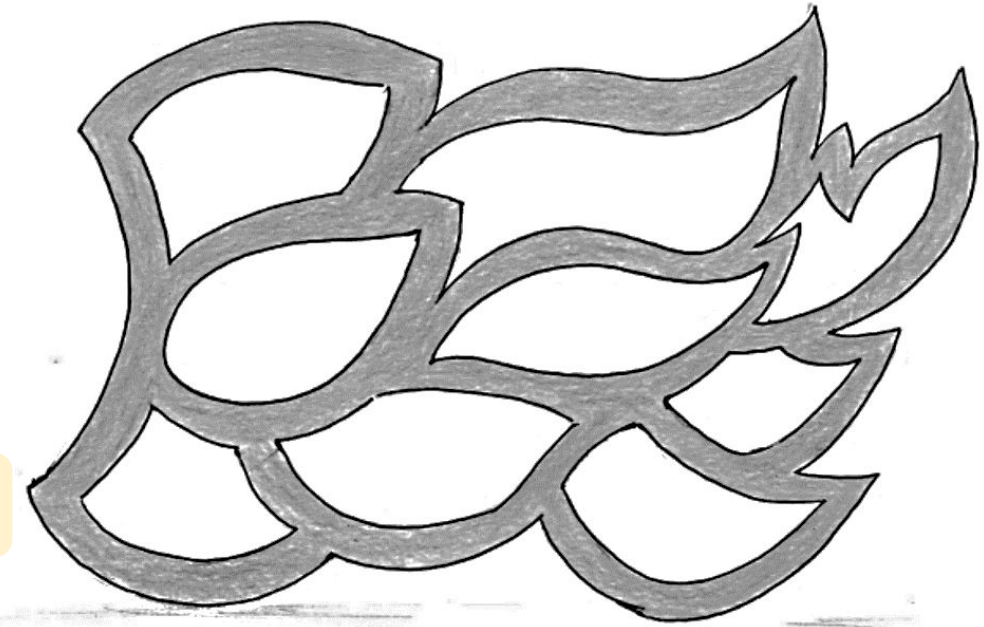
These are scanned images of my sketches on a Marker Paper



To finalise the ideas, I sketched the product in different angles to understand how it would turn out and to decide which medium and materials would suit the artwork. I decided to use the thermacol medium as I had already used the medium in the previous artworks so it would help me master the medium with developed skills.

These are the sketches of the finalised designs from different angles

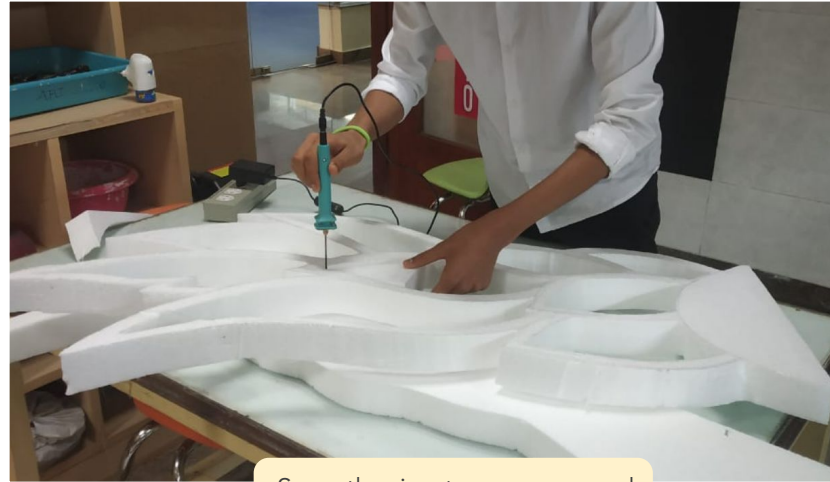
Sketching from different angles for better comprehension



These are scanned images of my sketches on a Marker Paper

I started to carve the thermacol using a hot thermacol cutter which made it easier to work with such a delicate material. After the cutting, with the help of my skills with using the material plaster I formed a sturdy yet smoothly finished sculpture.

I Also used tissue and cloth pieces in the time of modelling with plaster to give further strength to the sculpture as this will help the plaster bond to the sculpture.



Smoothing to remove rough edges

