

BIO ERA

THEBAGASSE

ALTERNATIVE FOOD PACKAGING FOR SUSTAINABILITY

BIO ERA PRODUCT CATALOG



6IN/15CM
ROUND PLATE
ITEMNO. : BBRA006-1



7IN/18CM
ROUND PLATE
ITEMNO. : BBRA007-1



9IN/23CM
ROUND PLATE
ITEMNO. : BBRA009-1



DESCRIPTION

SIZE : Ø 15.5 X 2 CM

CARTON QUANTITY : 1,000 PCS

DESCRIPTION

SIZE : Ø 17.5 X 2 CM

CARTON QUANTITY : 1,000 PCS

DESCRIPTION

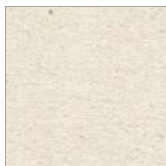
SIZE : Ø 22.5 X 2.5 CM

CARTON QUANTITY : 500 PCS

RAW MATERIAL :

100% SUGARCANE PULP

COLOUR AVAILABLE:



UNBLEACHED (NATURAL)



BLEACHED (WHITE)



10IN/25CM
ROUND PLATE
ITEMNO. : BBRA010-1



10IN/25CM
3-COMPARTMENT
ROUND PLATE
ITEMNO. : BBRA010-3



DESCRIPTION

SIZE : Ø 25.5 X 2.5 CM

CARTON QUANTITY : 500 PCS

DESCRIPTION

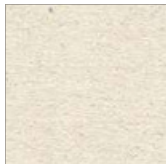
SIZE : Ø 25.5 X 2.5 CM

CARTON QUANTITY : 500 PCS

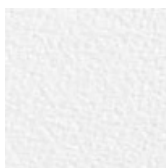
RAW MATERIAL :

100% SUGARCANE PULP

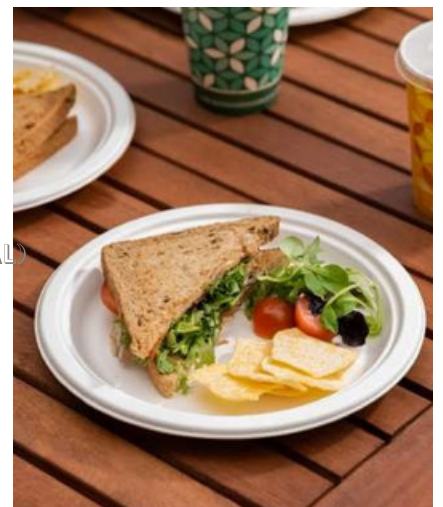
COLOUR AVAILABLE:



UNBLEACHED (NATURAL)



BLEACHED (WHITE)



CATEGORY 2 #
OVAL PLATE SERIES

9X6IN/23X17CM OVAL PLATE

10X7.5IN/26X19CM OVAL PLATE

12.5X10IN/32X25CM OVAL PLATE



9X6IN / 23X17CM

OVAL PLATE

ITEMNO. : BBOA009-1



10X7.5IN / 26X19CM

OVAL PLATE

ITEMNO. : BBOA010-1



12.5X10IN / 32X25CM

OVAL PLATE

ITEMNO. : BBOA012-1



DESCRIPTION

SIZE : 16.5 X 23 X 2.2 CM

CARTON QUANTITY : 1,000 PCS

DESCRIPTION

SIZE : 19.5 X 26 X 2.5 CM

CARTON QUANTITY : 500 PCS

DESCRIPTION

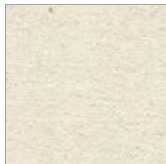
SIZE : 25.5 X 31.5 X 2.5 CM

CARTON QUANTITY : 500 PCS

RAW MATERIAL :

100% SUGARCANE PULP

COLOUR AVAILABLE:



UNBLEACHED (NATURAL)



BLEACHED (WHITE)



CATEGORY 3 #
BOWL SERIES

475ML / 16 OZ

BOWL 500ML /

17 OZ BOWL

875ML / 30 OZ

BOWL



475ML / 16OZ
BOWL
ITEMNO. : BBBA475-1



500ML / 17OZ
BOWL
ITEMNO. : BBBA500-1



875ML / 30OZ
BOWL
ITEMNO. : BBBA875-1



DESCRIPTION

SIZE : Ø 17.5 X 4 CM

CARTON QUANTITY : 1,000 PCS

DESCRIPTION

SIZE : Ø 15.5 X 5.4 CM

CARTON QUANTITY : 1,000 PCS

DESCRIPTION

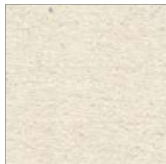
SIZE : Ø 17 X 6 CM

CARTON QUANTITY : 500 PCS

RAW MATERIAL :

100% SUGARCANE PULP

COLOUR AVAILABLE:



UNBLEACHED (NATURAL)



BLEACHED (WHITE)



CATEGORY 5

CLAMSHELL SERIES

6.6X4X1.9IN / 17X10.5X5CM CLAMSHELL

7X4.5X2IN / 18X11.5X6CM CLAMSHELL

6X6IN / 15X15.5X9CM CLAMSHELL

8X8IN / 20.5X21.5X8CM CLAMSHELL

8X8IN / 20.5X21.5X8CM 3-COMPARTMENT CLAMSHELL

9X6IN / 23X15X8CM CLAMSHELL

9X9IN / 23X23X9CM CLAMSHELL

9X9IN / 23X23X9CM 3-COMPARTMENT CLAMSHELL



6.6X4X1.9IN /
17X10.5X5CM
CLAMSHELL
ITEMNO. : BBKA450-1



7X4.5X2IN /
18X11.5X6CM
CLAMSHELL
ITEMNO. : BBKA600-1



6X6IN /
15X15.5X9CM
CLAMSHELL
ITEMNO. : BBKA066-1



DESCRIPTION

SIZE : 17 X 10.5 X 5 CM

CARTON QUANTITY : 500 PCS

DESCRIPTION

SIZE : 18 X 11.5 X 6 CM

CARTON QUANTITY : 500 PCS

DESCRIPTION

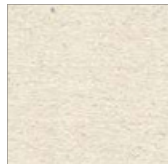
SIZE : 15 X 15.5 X 9 CM

CARTON QUANTITY : 500 PCS

RAW MATERIAL :

100% SUGARCANE PULP

COLOUR AVAILABLE:



UNBLEACHED (NATURAL)



BLEACHED (WHITE)



8X8IN /20.5X21.5X8CM

CLAMSHELL

ITEMNO. : BBKA088-1



8X8IN /20.5X21.5X8CM

3-COMPARTMENT
CLAMSHELL

ITEMNO. : BBKA088-3



9X6IN / 23X15X8CM

CLAMSHELL

ITEMNO. : BBKA096-1



DESCRIPTION

SIZE : 20.5X21.5X8CM

CARTON QUANTITY : 250 PCS

DESCRIPTION

SIZE : 20.5X21.5X8CM

CARTON QUANTITY : 250 PCS

DESCRIPTION

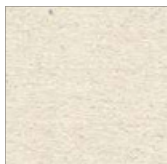
SIZE : 23 X 15 X 8 CM

CARTON QUANTITY : 250 PCS

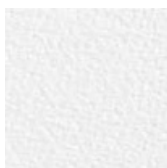
RAW MATERIAL :

100% SUGARCANE PULP

COLOUR AVAILABLE:



UNBLEACHED (NATURAL)



BLEACHED (WHITE)



9X9IN / 23X23X9CM

CLAMSHELL

ITEMNO. : BBKA099-1



9X9IN / 23X23X9CM

3-COMPARTMENT

CLAMSHELL

ITEMNO. : BBKA099-3



DESCRIPTION

SIZE : 23 X 23 X 9 CM

CARTON QUANTITY : 250 PCS

DESCRIPTION

SIZE : 23 X 23 X 9 CM

CARTON QUANTITY : 250 PCS

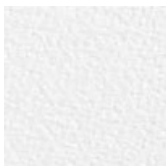
RAW MATERIAL :

100% SUGARCANE PULP

COLOUR AVAILABLE:



UNBLEACHED (NATURAL)



BLEACHED (WHITE)



CATEGORY 5 # BOX SERIES

500ML

RECTANGULAR BOX

600ML

RECTANGULAR BOX

1,000ML

RECTANGULAR BOX



500ML / 17OZ
RECTANGULAR
BOX

ITEMNO. : BBLA047-2



600ML / 20OZ
RECTANGULAR
BOX

ITEMNO. : BBLA047-1



1,000ML / 34OZ
RECTANGULAR
BOX

ITEMNO. : BBLA096-1



DESCRIPTION

SIZE : 18 X 12 X 4.5CM

CARTON QUANTITY : 500 PCS

DESCRIPTION

SIZE : 18 X 12 X 4.5CM

CARTON QUANTITY : 500 PCS

DESCRIPTION

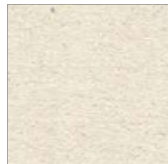
SIZE : 23 X 16.5 X 4.3CM

CARTON QUANTITY : 500 PCS

RAW MATERIAL :

100% SUGARCANE PULP

COLOUR AVAILABLE:



UNBLEACHED (NATURAL)



BLEACHED (WHITE)



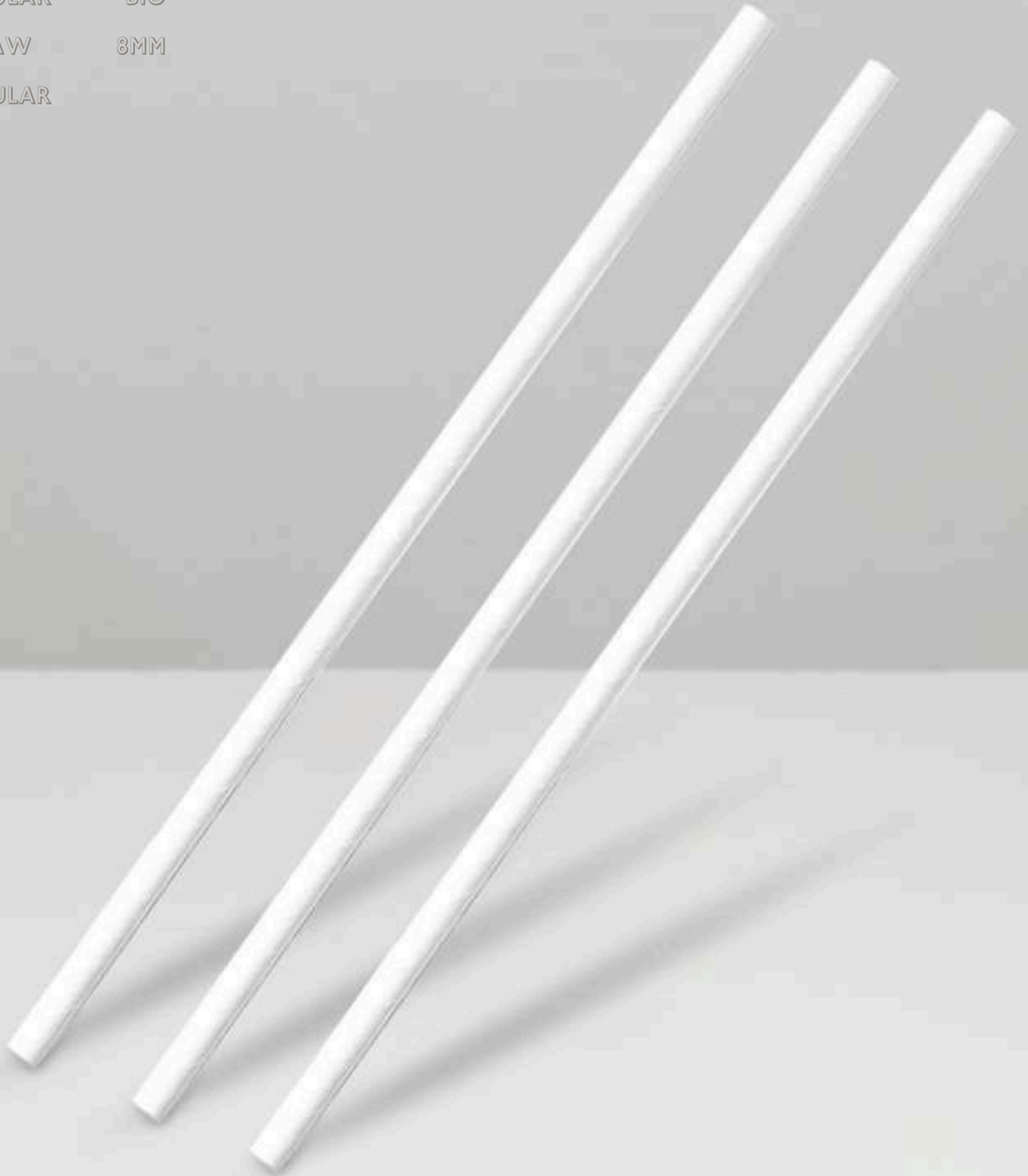
CATEGORY 6 #
DRINKING STRAW SERIES

BIO STRAW 6MM

REGULAR BIO

STRAW 8MM

REGULAR



**BIO STRAW 6MM
REGULAR**

ITEMNO. : WH062154PNW



**BIO STRAW 8MM
REGULAR**

ITEMNO. : WH082204PNW



DESCRIPTION

SIZE : 21.5 CM LONG ; \varnothing 0.6CM

CARTON QUANTITY : 5,000 PCS

DESCRIPTION

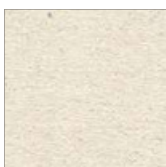
SIZE : 22 CM LONG ; \varnothing 0.8CM

CARTON QUANTITY : 3,600 PCS

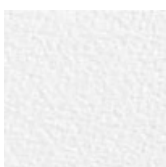
RAW MATERIAL :

100% SUGARCANE PULP

COLOUR AVAILABLE:



UNBLEACHED (NATURAL)



BLEACHED (WHITE)



OUR SERVICES

CUSTOMIZE YOUR BAGASSE PACKAGING



WORK WITH OUR EXPERIENCED DESIGN TEAM TO CREATE YOUR CUSTOM DESIGNED AND PRINTED FOOD PACKAGING. WE WILL WORK WITH YOU FROM DESIGN DEVELOPMENT, PROTOTYPING TO MANUFACTURER AND DELIVERY.

TERMS AND CONDITIONS APPLY.

OUR SERVICES

PRODUCT FEATURES

PRODUCT FEATURES



Hot & Cold use



Freezer friendly



Microwave friendly



Water resistance



Oil resistance



Biodegradable



Disposable



Compostable



Food grade
Composted



Sustainable

