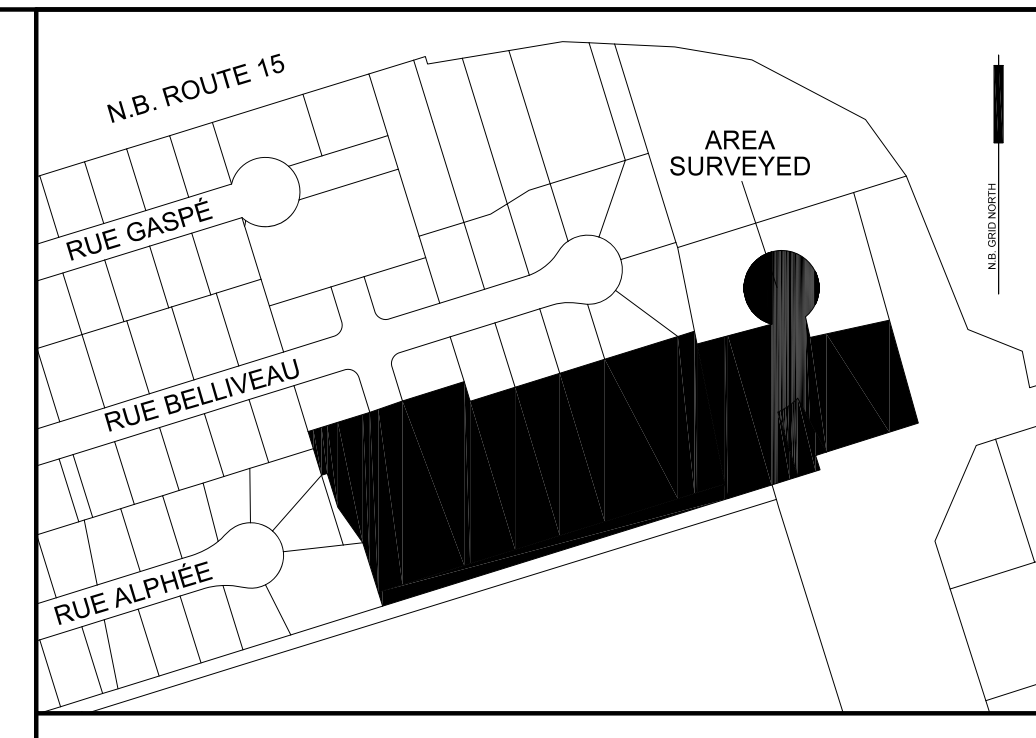


PLANNING APPROVAL:

REGISTRATION:



LOCATION MAP  
Not To Scale

- NOTES:
1. ALL COMPUTATIONS PERFORMED AND COORDINATES SHOWN ON THIS PLAN ARE BASED ON THE NEW BRUNSWICK STEREOGRAPHIC DOUBLE PROJECTION AND THE NAD83 (GCS) ELLIPSOID AS REALIZED BY SERVICE NEW BRUNSWICK'S ACTIVE CONTROL SYSTEM.
  2. ALL DISTANCES SHOWN ARE GRID DISTANCES CALCULATED USING A COMBINED SCALE FACTOR UTILIZING GEOID MODEL HT2.0.
  3. DIRECTIONS ARE N.B. GRID AZIMUTHS ESTABLISHED USING GNSS.
  4. CERTIFICATIONS IS NOT MADE AS TO LEGAL TITLE, NOR TO ZONING.
  5. THE PLAN NUMBERS AND DOCUMENT NUMBERS REFERRED TO ON THIS PLAN ARE THOSE OF THE COUNTY REGISTRY OFFICE.
  6. FIELD SURVEY WAS COMPLETED ON MAY 27, 2024.

- LEGEND:
- LAND DEALT WITH BY THIS PLAN SHOWN THUS
  - UTILITY EASEMENT
  - STANDARD SURVEY MARKER PLACES (SMPL)
  - STANDARD SURVEY MARKER FOUND (SMFD)
  - CALCULATED COORDINATE POINT (CALC)
  - TABULATED COORDINATE REFERENCE

PROPERTY INFORMATION:

PID 01004068  
REGISTERED OWNER(S): DM DÉVELOPPEMENTS DÉVELOPMENTS LTÉE/LTD.  
LAND TITLES: 2001-07-13  
DOC. 43958504  
REG. DATE: 2023-06-16

PID 70635362  
REGISTERED OWNER(S): DM DÉVELOPPEMENTS DÉVELOPMENTS LTÉE/LTD.  
LAND TITLES: 2018-01-19  
DOC. 43958504  
REG. DATE: 2023-06-16

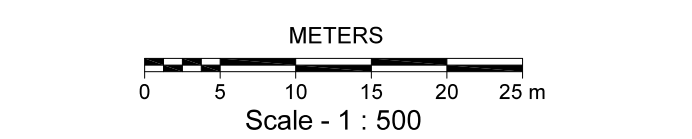
PID 70282280  
REGISTERED OWNER(S): DM DÉVELOPPEMENTS DÉVELOPMENTS LTÉE/LTD.  
LAND TITLES: 2001-07-13  
DOC. 43958504  
REG. DATE: 2023-06-16

PURPOSE OF PLAN:

- TO AMEND PARCEL "C" PLAN 37734887, PID 70635362
- TO AMEND PLAN 200685, PID 70282280
- TO CREATE LOTS 24-8 TO 24-16, 24-18, 24-19 AND LOTS 23-31 TO 23-38 FOR RESIDENTIAL BUILDING PURPOSES.
- TO CREATE A PORTION OF RUELLE ADRIENNE COURT 18.00m WIDE (PUBLIC), PURSUANT TO SECTION 88(6)(a) OF THE COMMUNITY PLANNING ACT, 2017
- TO CREATE PUBLIC UTILITY EASEMENT SHOWN, PURSUANT TO SECTION 5. DESIGNATED EASEMENT REGULATION 2021-83, OF THE COMMUNITY PLANNING ACT, 2017.
- TO CREATE FUTURE STREET (TEMPORARY TURN-AROUND) AT THE END OF RUELLE ADRIENNE COURT, PURSUANT TO SECTION 88(6)(b) OF THE COMMUNITY PLANNING ACT, 2017.



6 TRITES ROAD  
RIVERVIEW, NB  
(506) 857 0022



POINT	NORTHING	EASTING	DESCRIPTION	POINT	NORTHING	EASTING	DESCRIPTION	POINT	NORTHING	EASTING	DESCRIPTION	POINT	NORTHING	EASTING	DESCRIPTION
32	7457552.800	2636614.650	CALC	120	7457459.845	2636510.951	SMPL	140	7457450.211	2636622.296	SMPL	160	7457503.193	2636684.311	SMPL
33	7457549.957	2636615.489	CALC	121	7457436.596	2636515.206	SMPL	141	7457453.746	2636633.626	SMPL	161	7457532.227	2636659.571	CALC
34	7457445.450	2636426.250	CALC	122	7457430.142	2636497.517	SMPL	142	7457420.233	2636644.080	SMPL	162	7457463.516	2636664.945	CALC
35	7457431.575	2636430.582	SMFD	123	7457438.051	2636482.479	SMPL	143	7457443.857	2636641.483	SMPL	163	7457528.726	2636678.756	RAD PT
36	7457395.400	2636441.800	CALC	124	7457432.732	2636485.283	CALC	144	7457477.310	2636631.045	SMPL	164	7457492.155	2636656.011	RAD PT
37	7457454.287	2636433.520	SMFD	125	7457422.591	2636470.732	SMPL	145	7457484.573	2636654.322	SMPL	165	7457441.597	2636643.943	RAD PT
38	7457464.274	2636455.526	SMFD	126	7457412.176	2636488.081	SMPL	146	7457451.119	2636664.761	SMPL	166	7457469.593	2636472.722	CALC
39	7457470.225	2636472.527	SMFD	127	7457389.790	2636482.331	SMPL	147	7457458.380	2636658.039	SMPL	167	7457499.365	2636666.723	SMPL
40	7457480.230	2636504.590	SMFD	128	7457381.367	2636519.452	SMPL	148	7457491.836	2636677.599	SMPL	168	7457498.534	2636685.325	CALC
41	7457470.046	2636507.768	SMFD	129	7457412.959	2636502.877	CALC	149	7457495.100	2636660.876	SMPL	169	7457509.672	2636682.901	SMPL
42	7457506.383	2636624.233	SMFD	130	7457414.869	2636509.001	SMPL	150	7457465.642	2636611.316	SMPL	170	7457399.687	2636449.762	SMPL
43	7457430.833	2636678.070	SMFD	131	7457421.937	2636531.660	SMPL	151	7457472.928	2636634.672	SMPL	171	7457578.493	2636706.939	CALC
44	7457471.650	2636667.910	SMFD	132	7457388.433	2636542.111	SMPL	152	7457500.004	2636626.223	SMPL	172	7457458.733	2636740.565	SMFD
45	7457464.474	2636667.579	SMFD	133	7457429.006	2636554.319	SMPL	153	7457480.699	2636659.585	SMPL	173	7457443.652	2636692.856	SMFD
46	7457363.539	2636462.288	SMFD	134	7457395.500	2636564.771	SMPL	154	7457494.706	2636667.737	SMPL	174	7457441.865	2636687.520	SMFD
47	7457396.522	2636451.996	SMFD	135	7457402.566	2636587.431	SMPL	155	7457510.089	2636664.389	SMPL	175	7457434.406	2636689.526	SMFD
48	7457415.010	2636438.944	SMFD	136	7457436.074	2636576.978	SMPL	156	7457490.129	2636667.839	CALC	176	7457426.547	2636664.325	CALC
49	7457432.483	2636433.402	SMFD	137	7457443.143	2636599.637	SMPL	157	7457485.464	2636685.256	SMPL	177	7457419.481	2636641.669	CALC
50	7457441.552	2636462.555	SMPL	138	7457409.633	2636610.090	SMPL	158	7457471.617	2636736.947	SMPL	178	7457456.492	2636680.997	NB HP MON
51	7457449.824	2636478.837	SMPL	139	7457416.700	2636632.750	SMPL	159	7457512.170	2636725.561	SMPL				

CURVE TABLE

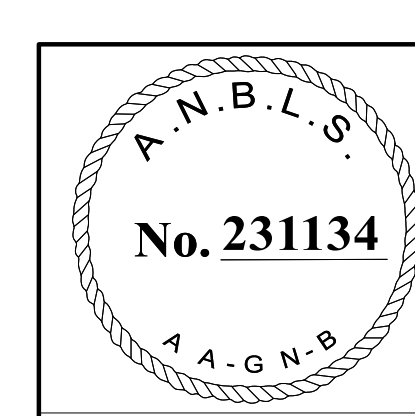
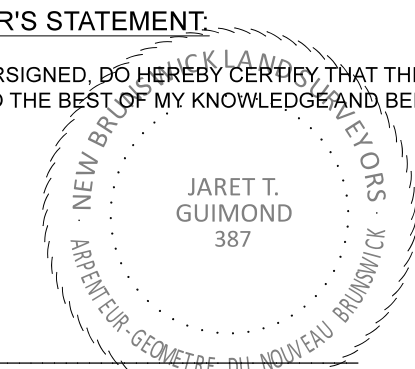
CURVE	RADIUS	ARC LENGTH	CHORD LENGTH	CHORD AZIMUTH	RADIUS POINT
C1	12.000	18.878	16.991	117°44'36"	165
C2	30.000	11.585	11.513	151°44'57"	165
C3	30.000	20.639	20.235	120°58'40"	165
C4	30.000	14.972	14.817	89°58'18"	165
C5	30.000	2.803	2.802	69°59'52"	164
C6	30.000	12.673	12.579	55°13'09"	164
C7	30.000	29.005	27.888	15°25'12"	164
C8	12.000	4.607	4.579	369°43'12"	164
C9	12.000	13.186	12.932	41°11'47"	164
C10	19.500	84.194	82.450	314°01'55"	163

OWNER'S STATEMENT:  
I (WE), THE UNDERSIGNED, DO HEREBY CERTIFY THAT I (WE) AM (ARE) THE REGISTERED OWNER(S) OF THE PROPERTY(IES) BEING SUBDIVIDED HEREON AND DO HEREBY GRANT APPROVAL TO THIS PLAN, AS OUR INTERESTS APPEAR.

UTILITY NOTE:  
PURSUANT TO SECTION 5 OF "DESIGNATED EASEMENT REGULATION" 2021-83, THE PUBLIC UTILITY EASEMENT ON THIS PLAN VESTS IN NEW BRUNSWICK POWER DISTRIBUTION AND CUSTOMER SERVICE CORPORATION, BELL CANADA, AND ROGERS COMMUNICATIONS INC. WITH THE FILING OF THIS PLAN.

DM DÉVELOPPEMENTS DÉVELOPMENTS LTÉE/LTD.  
DAVE A. MALTAIS, PRESIDENT

SURVEYOR'S STATEMENT:  
I, THE UNDERSIGNED, DO HEREBY CERTIFY THAT THIS PLAN IS CORRECT TO THE BEST OF MY KNOWLEDGE AND BELIEFS.



AMENDING SUBDIVISION PLAN  
**VILLA DIEPPE**  
SUBDIVISION  
UNIT 21 - PHASE 1  
AMENDING PLANS 200685, 37734887  
SOUTH SIDE OF RUE BELLIVEAU STREET  
CITY OF DIEPPE  
PARISH OF MONCTON  
COUNTY OF WESTMORLAND  
PROVINCE OF NEW BRUNSWICK

HUB SURVEYS  
REV: Revision  
Date: May 27, 2024  
File: 23087P1SD  
Job No.: 23087  
Initials: SPK/JTG