



C A T A L O G

Premiere Casino, Hotel & Entertainment Carpet



WELCOME

We offer value-oriented, performance-based pattern carpet and no-cost consulting services to those in hotel, casino, resort, restaurant and other commercial pattern-related environments. We strive to be the leading “go-to guys” for the hospitality industry, working with designers, architects, facilities managers, executives and owners seeking the information, expertise and solutions required to improve a property’s visual effect, performance and bottom-line costs. Our company operates with a philosophy that ties our success to that of our clients. To that end, we view ourselves as long-term partners, striving to help our clients reach and exceed their objectives.

CONTENTS

WELCOME	1
---------	---

ARTICLE: DESIGN TRENDS	3
------------------------	---

CARPET PATTERNS: QUICK REFERENCE	5
----------------------------------	---

CARPET PATTERNS	9
-----------------	---

ARTICLE: PROPER CARPET MAINTENANCE	149
------------------------------------	-----

DESIGN TRENDS & THE FUTURE IN GAMING CARPETS

By Tony Wideen

Today in the world of hotel and casino carpets there are many more options than only 10 years ago. New technology in carpet manufacturing equipment and improved fibers continue to evolve allowing much greater creativity which has changed the way casino architects, designers & gaming properties think about their carpet needs. The great recession forced properties to look more at costs and value in their renovations or new construction.

You now have three options in pattern carpets. Die injected carpets using nylon from DuPont or Monsanto chemical companies. Axminster woven 80/20 wool blends & solution dyed nylons that are virtually 100% stain proof carpets. Solution dyed carpets are gaining ground quickly with both pros and cons in their use.

Pros of solution dyed nylon is essentially it's stain proof, which is vastly different than the words stain resistant. Think of solution dyed nylon the following way vs. traditional nylon... Normal fiber is white like a radish inside and dyed with color using various methods. Solution dyed nylon is like a carrot in that the color is put into nylon during the fiber's liquid state. It's then made with pre-colored nylon. Like a carrot, when cut in half the color is throughout and can't be taken out in any way. You can pour a bottle of bleach right on it and it won't create a bleached out spot like any carpet that is dyed. These carpets, while excellent in any casino application, are a natural for heavy soil areas like restaurants. The cons are a maximum of six colors can be used and limitation on colors available is around 125 colors. Solution dyed is growing continuously in the gaming market. It's a simple question of design flexibility vs. maximum performance.

Pattern repeats have improved dramatically with properties now doing large repeats that are virtually unlimited. Past designs were 3 ft. x 3 ft. repeats. Certainly the biggest trend in pattern carpet is that you can now create designs to have bigger medallions and the latest look is large pattern repeats with smaller elements within the repeats. This new freeform organic look can create any size repeat such as 12 ft. x 12 ft. or even combining one roll of carpet to match a second differently designed roll that creates 24 ft. x 12 ft. patterns. All casinos and other areas such as restaurants or meeting rooms should always have the carpet scale work correctly within the room size. Be aware that a large repeat should be used to the scale of your particular room. Native American casinos are now as large as many Vegas properties, but medium or boutique properties should stick with midsize repeats. Patterns could be made exactly the same design in 3 ft., 4 ft., 6 ft., and 12 ft. repeats.

In hotel guest rooms which are gradually being built or added to many Native casinos, new technology can produce large scale multi-level loop and cut pile combination with full room repeats that create somewhat of a sculptured look. Solution dyed nylon is now used in 98% of guest room carpets, from Best Westerns to Four Seasons.

Borders are another big change, as we see less of them all the time. Today, borders are out completely from both a practical and visual way. Seams splitting cause shorter replacement time, extra yardage of carpet and they are simply overdone by designers. We're now seeing few borders unless truly necessary. Even hotel corridors have gotten away from area rug types of bordered looks. Manufacturers are coming out with more random type corridor looks or putting in broadloom carpet.

Theming of properties has also left us a bit. More contemporary free flowing patterns with organic looks are in, but one can go too far. You can't theme a 3000-room pyramid as the Luxor did inside. Living just two miles behind it, I should know. Caesars Palace is an example of sticking with a theme and making it cool as well. Each property must decide for themselves, but I believe Native American Casinos should stick with the theme that works best in their geographical area and tribal beliefs. Theming is not out completely and never will be. You can have both a theme and be hip by simply being a bit more subtle on your themed design.

Color trends have classic red or various shades of it coming back. Black or grouping of pattern and blending colors are still hot as background. All colors POP against black. The more blends of color, the more dirt is hidden. The new blends may have a second layer of color which hides soiling extremely well compared to solids.

In the future, look for more of the same, large pattern repeats, more colors and the amount one can use with solution dyed nylon. Continued technology from tufted and woven machine companies to speed the manufacturing process as well as fiber manufacturers will lead the way.



CARPET PATTERNS: QUICK REFERENCE



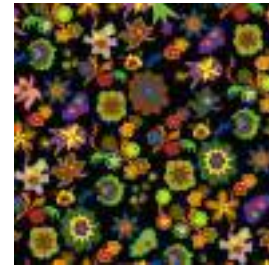
9



11



13



15



17



19



21



23



25



27



29



31



33



35



37



39



41



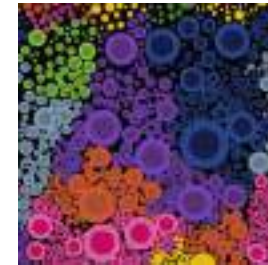
43



45



47



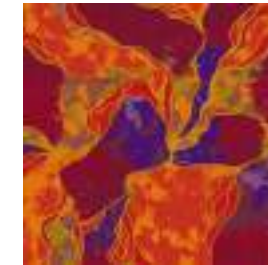
49



51



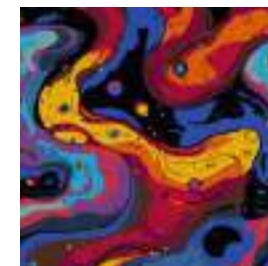
53



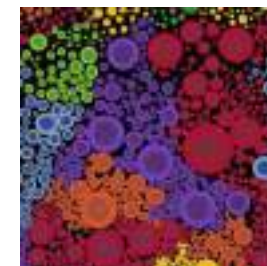
55



57



59



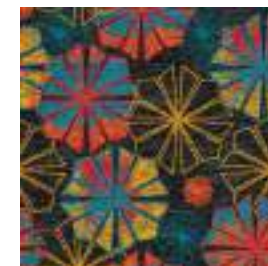
61



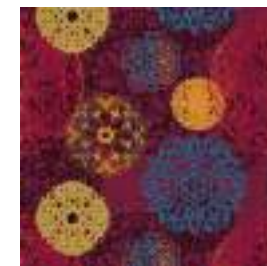
63



65



67



69



71



73



75



77



79



81



83



85

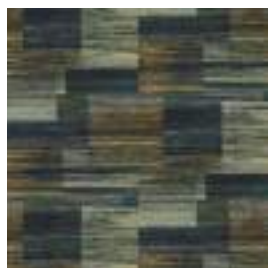


87

CARPET PATTERNS: QUICK REFERENCE



89



91



93



95



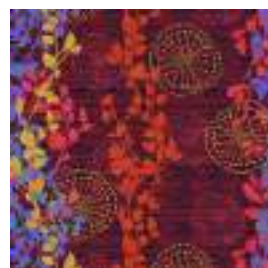
97



99



101



103



105



107



109



111



113



115



117



119



121



123



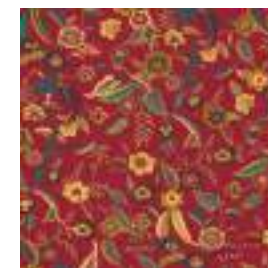
125



127



129



131



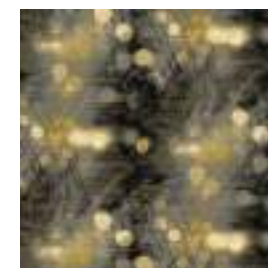
133



135



137



139



141



143



145



147



Style: AC1113-200
 Repeat: 73.16x73.16
 Color: Custom

Order# 50316 | Injection Dyed

YARN COLORS

A	Black	E	RED CLAY
B	BEET	F	DANDELION
C	ACAJOU	G	PINK
D	CRIMSOM	H	MOCHA CREAM





Style: 1029A200 Carnival
Repeat: 36.56x36.56
Color: Custom

Order# 75572 | Injection Dyed

YARN COLORS

A	Black	E	P33	I	P27
B	5F1	F	N28	J	H10
C	I45	G	CRIMSOM	K	5F1
D	I1	H	3K3	L	MOCHA CREAM





Style: TV-141-200 The Strip
Repeat: 73.2x73.2
Color: Custom

Order# 45720 | Injection Dyed

YARN COLORS

- | | | | | | |
|---|-----------|---|-----------|---|------------|
| A | Black | E | CHINA SEA | I | GALVANIZED |
| B | GARNET | F | CRIMSOM | | |
| C | ACAJOU | G | RED CLAY | | |
| D | BLUE FURY | H | DANDELION | | |





Style: TV-176-300 Moulin Rouge
Repeat: 146.32x146.32
Color: Custom

Order# 50640 | Injection Dyed

YARN COLORS

- | | | | | | |
|---|------------|---|-------------|---|-------------|
| A | BLACK | E | PUMPKIN | I | ROYAL GRAPE |
| B | BELLPEPPER | F | GRASSHOPPER | J | INDIGO |
| C | DIRT | G | SUNGLOW | | |
| D | SCARLET | H | TAN | | |





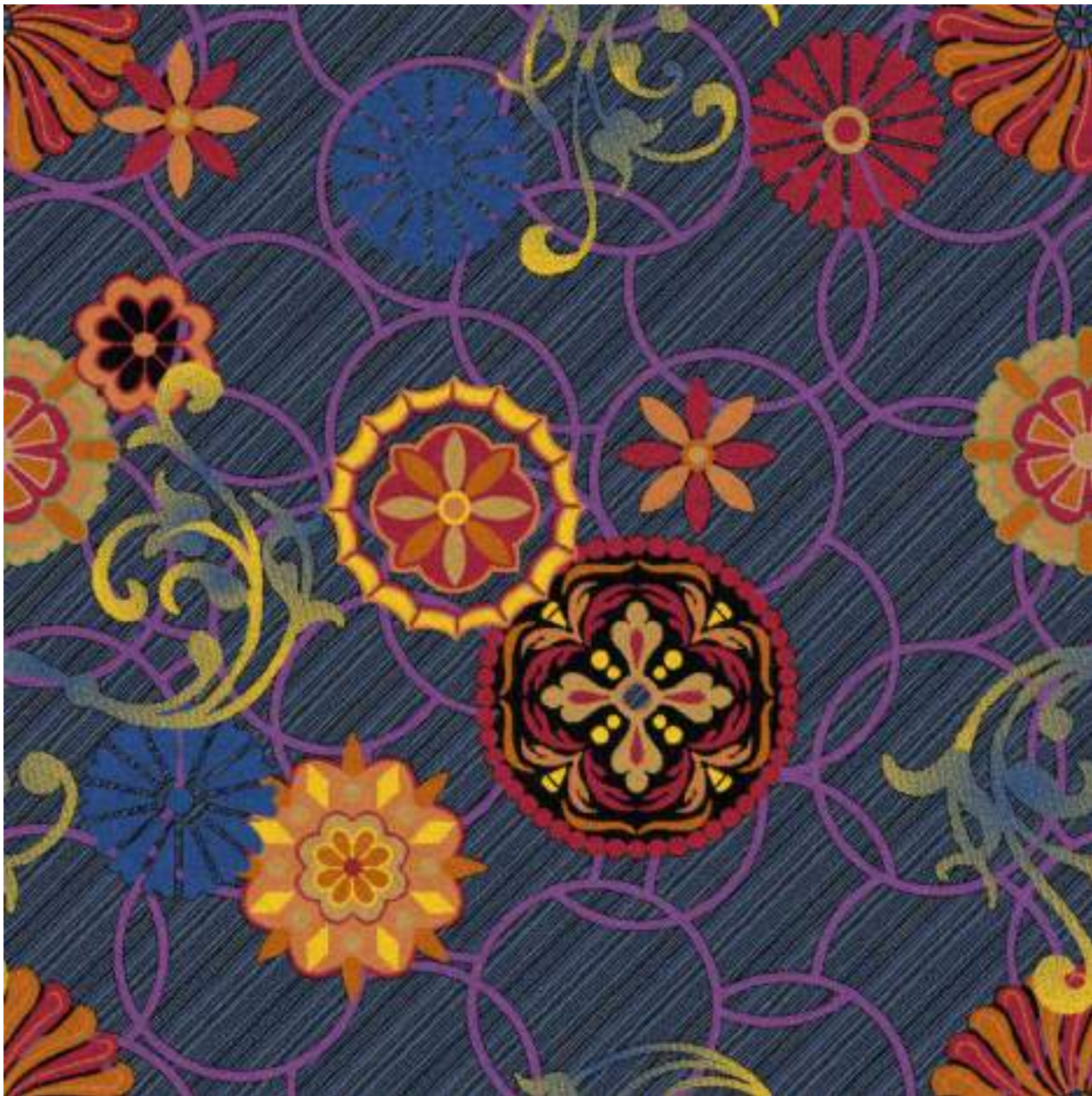
Style: TV-506-200-V4
Repeat: 73.16x73.16
Color: Custom

Order# 45362 | Injection Dyed

YARN COLORS

- | | | | |
|---|-----------|---|-------------|
| A | Black | E | ACORN |
| B | GARNET | F | RED CLAY |
| C | BLUE FURY | G | MOCHA CREAM |
| D | CRIMSOM | | |





Style: AC1113-201
Repeat: 72x72
Color: Custom

Order# 80848 | Injection Dyed

YARN COLORS


- | | | | | | |
|---|-------|---|----------|---|-----------|
| A | Black | E | K43 | I | H11 |
| B | N45 | F | H43 | J | DANDELION |
| C | 3K3 | G | E22 | K | P1 |
| D | L14 | H | RED CLAY | | |





Style: Eliana 002
Pattern: 144 x 408 **REPEAT**
Color: Default

YARN COLORS

A		h19	E		k54	I		j47	M		a61
B		g41	F		g33	J		h7			
C		j51	G		b20	K		a26			
D		i55	H		g32	L		a25			





Style: 2035K201 Mystique
Repeat: 36.6x36.6
Color: Custom

Order# 45326 | Injection Dyed

YARN COLORS

A	Black	E	CRIMSOM
B	ACORN	F	RED CLAY
C	BLUE FURY	G	SAGUARO
D	VALOR	H	DANDELION





Style: Des3-202
Repeat: 73.16x73.16
Color: Custom

Order# 45342 | Injection Dyed

YARN COLORS

- | | | | |
|---|-------------|---|-----------|
| A | MEDIUM GRAY | E | RED CLAY |
| B | BLUE FURY | F | DANDELION |
| C | CHINA SEA | | |
| D | CRIMSOM | | |





Style: TV-240501
Repeat: 72x72
Color: Custom

YARN COLORS










A	Black	E	k3	I	f21	M	f40
B	g43	F	b19	J	g41	N	l47
C	d42	G	h10	K	f41		
D	h7	H	h18	L	j40		





Style: TV-507-240617
Pattern: 72 x 72 **REPEAT**
Color: Default

YARN COLORS

A		h57	E		h19	I		a25
B		g45	F		g41	J		a61
C		k40	G		g33			
D		h7	H		b20			





Style: TV-129-240508 Money Plays
Repeat: 72x72
Color:

YARN COLORS

A		Black	E		b20	I		k40
B		g45	F		h19	J		a25
C		h57	G		g33			
D		h7	H		g41			





Style: TV-110-700 The Orleans
Repeat: 73.2x73.2
Color: Custom

YARN COLORS

A	■	O48	E	■	E28	I	■	H11
B	■	5F1	F	■	I45	J	■	P33
C	■	H43	G	■	I15			
D	■	O29	H	■	N10			

Order# 80121 | Injection Dyed





Style: TV-240628-1 Hide Everything
Repeat: 72x48
Color:

YARN COLORS

- | | | | | | |
|---|---|---|---|---|---|
| A |  g43 | E |  k23 | I |  a58 |
| B |  b54 | F |  j7 | | |
| C |  i45 | G |  h18 | | |
| D |  h41 | H |  b4 | | |





Style: TV-240627-2
Repeat: 144x108
Color:

YARN COLORS

A	Black	E	i6	I	i4	M	c52
B	l53	F	e52	J	f52	N	e59
C	k6	G	h4	K	i10	O	i13
D	h6	H	h8	L	e51		





Style: TV-240806
Repeat: 144x144
Color:

YARN COLORS

A	BLACK	E	k42	I	d19	M	g38
B	g43	F	h41	J	f21	N	f39
C	i45	G	k45	K	g41		
D	g44	H	d27	L	l39		



















Style: TV-229277
Repeat: 144.02x144.02
Color: Custom

Order# 79745 | Injection Dyed

YARN COLORS










A		k43	E		l15	I		B27	M		O2
B		l45	F		N10	J		K43	N		B7
C		A45	G		D15	K		5F1			
D		h4	H		D34	L		D8			





Style: TV-103-240618
Pattern: 72 x 72 **REPEAT**
Color: Default

YARN COLORS

A		h41	E		k3	I		a61
B		h47	F		k26			
C		g41	G		e23			
D		i44	H		a21			





Style: TV-240806
Repeat: 144x144
Color: Custom

Order# 80413 | Injection Dyed

YARN COLORS

A	BLACK	E	k42	I	d19	M	g38
B	g43	F	h41	J	f21	N	f39
C	i45	G	k45	K	B27		
D	g44	H	d27	L	l39		



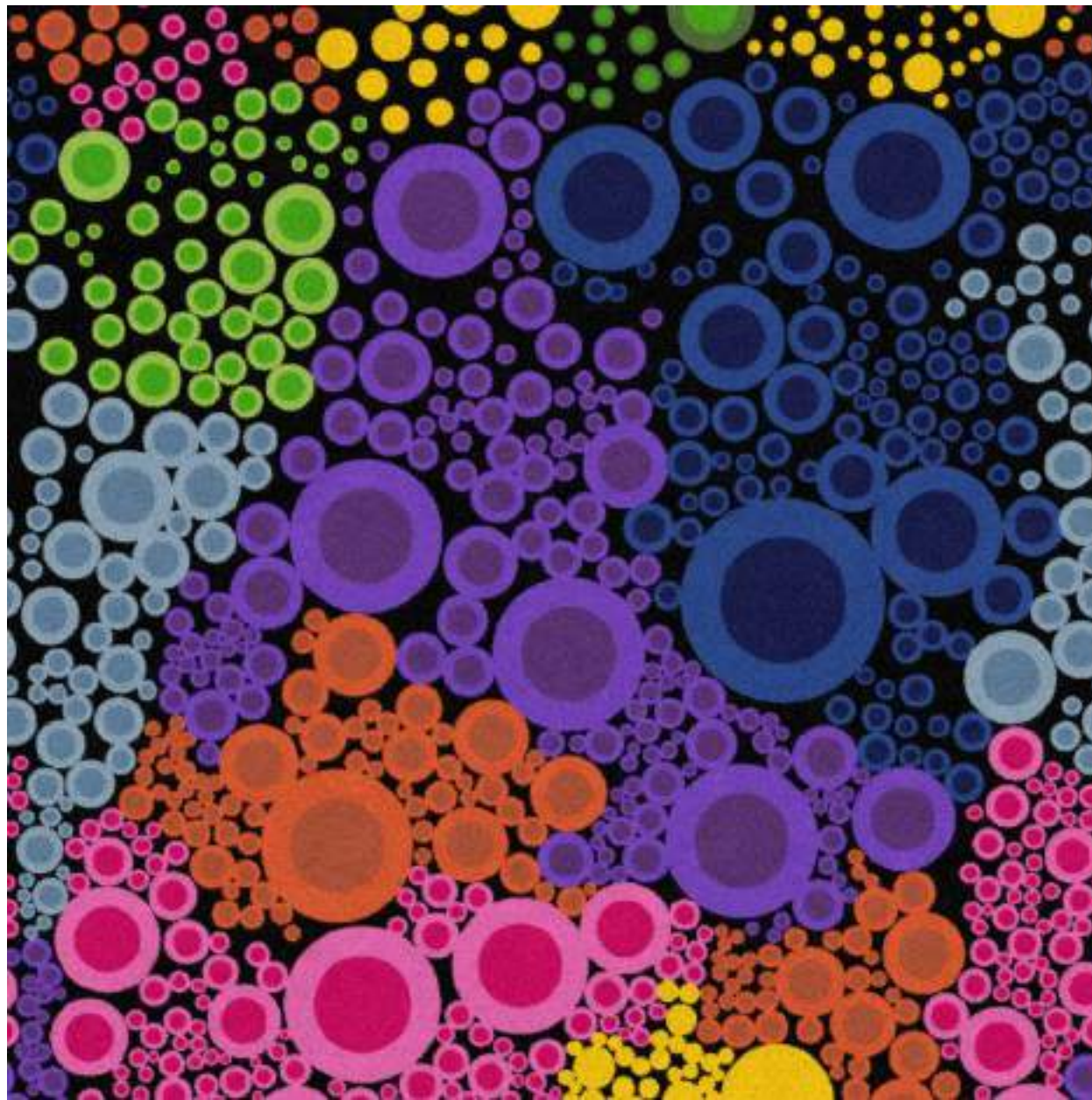


Style: TV-240806-1
Repeat: 144x144
Color:

YARN COLORS

A	Black	E	a7	I	f21	M	k49
B	i45	F	b9	J	b4		
C	b6	G	b20	K	c3		
D	i41	H	f20	L	j38		



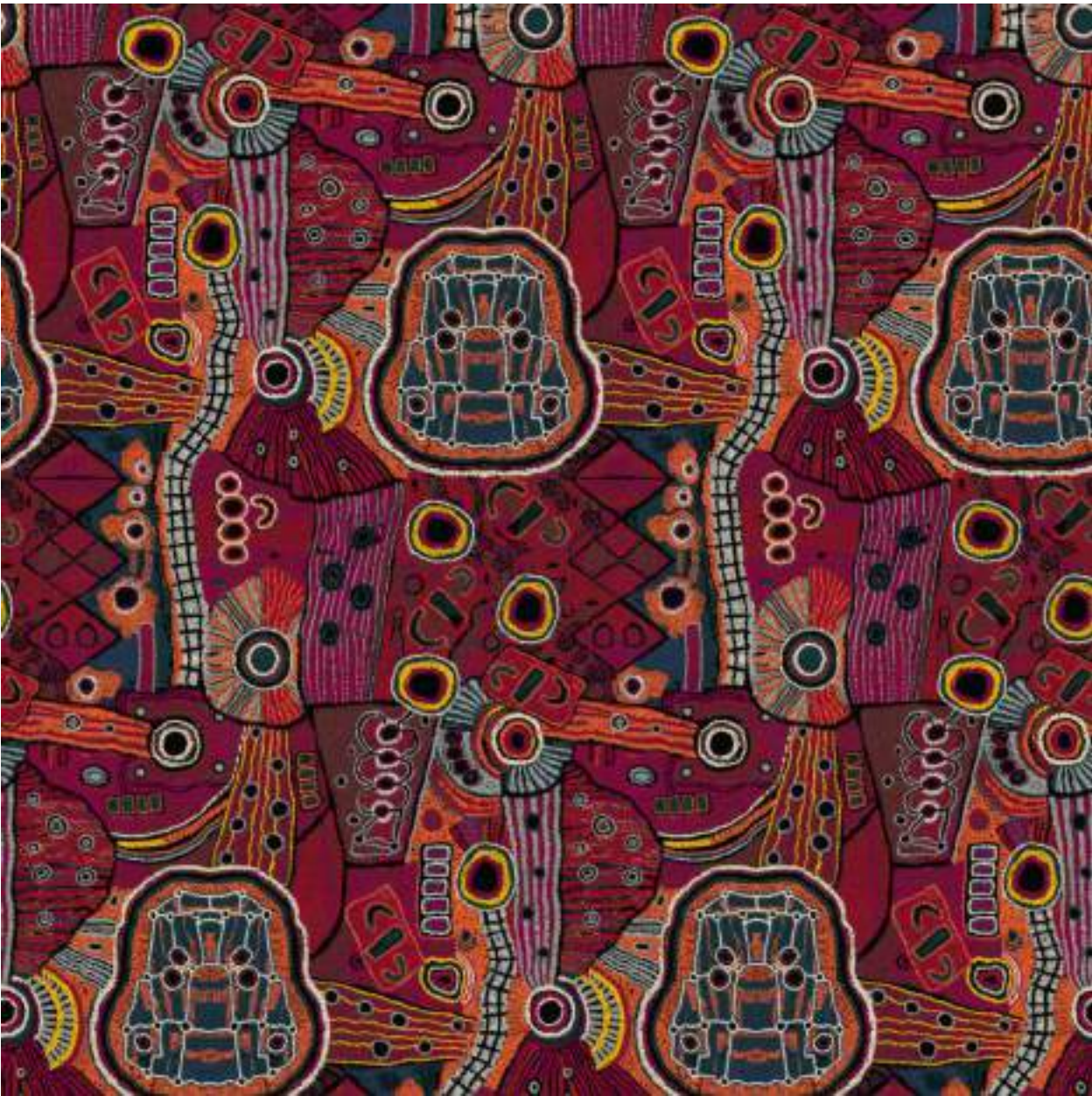


Style: TV-240812
 Repeat: 72x133.2
 Color:

YARN COLORS

A	BLACK	E	j7	I	f21	M	b4
B	i29	F	j9	J	g33	N	f10
C	i44	G	h10	K	g41	O	h47
D	a7	H	i27	L	g47		





Style: TV-240731
Repeat: 144x168.2
Color:

YARN COLORS

A	Black	E	g44	I	h19
B	f45	F	h7	J	j57
C	k6	G	h4	K	a25
D	h6	H	j9		



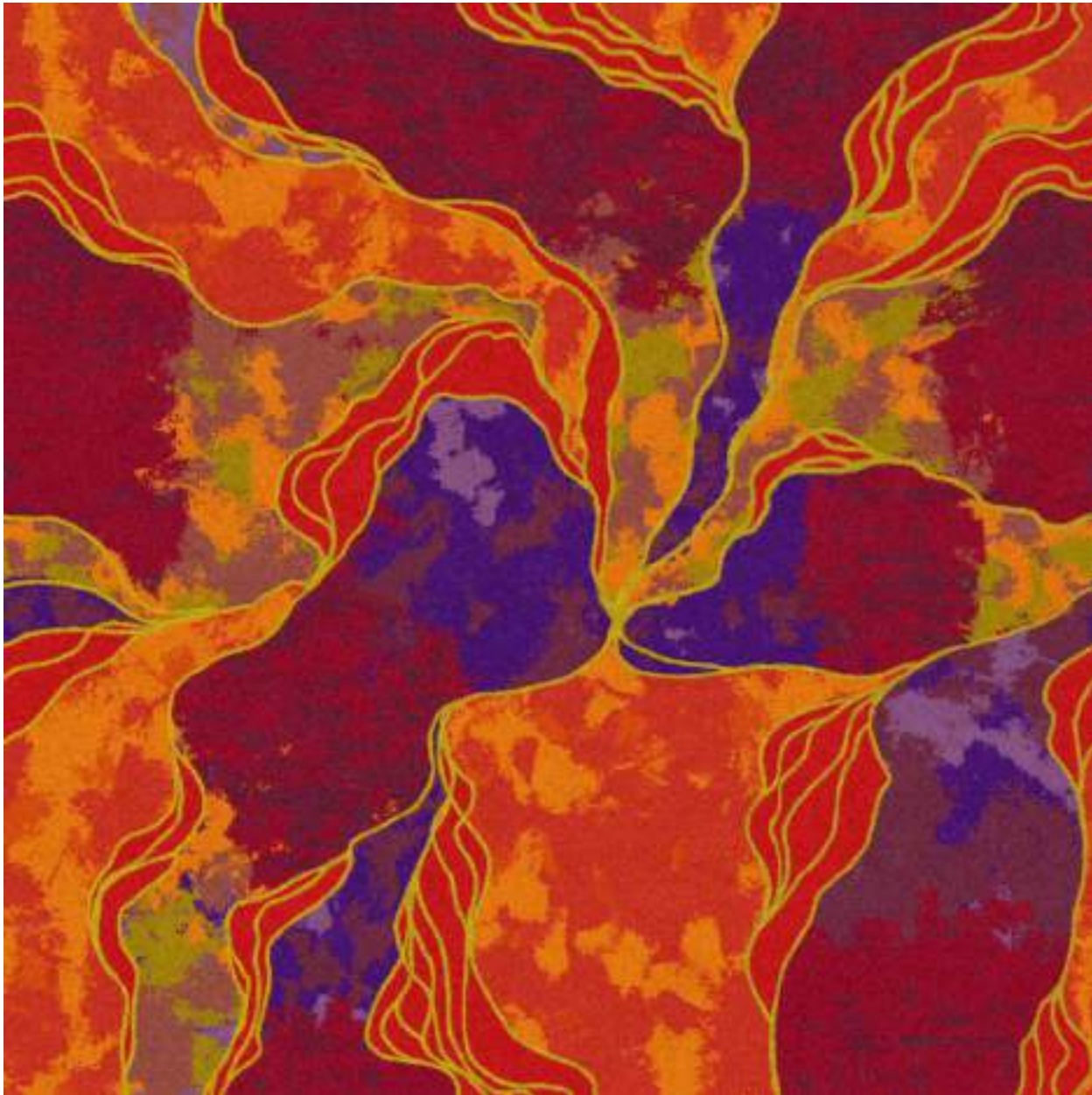


Style: TV-240903-1
 Repeat: 144x162
 Color:

YARN COLORS












A	Black	E	hg	I	j52	M	e39
B	l53	F	a20	J	e16	N	c47
C	k6	G	g20	K	g22		
D	k53	H	b21	L	f22		





Style: TV-240429
Repeat: 72x72
Color:

YARN COLORS

A		g5	E		k3	I		a19	M		c3
B		d6	F		k8	J		g20			
C		a8	G		j8	K		f16			
D		h7	H		b20	L		c33			





Style: TV-240909
Repeat: 144x242.8
Color:

YARN COLORS

A	Black	E	i45	I	j7	M	k39
B	b54	F	l42	J	d16	N	b2
C	l6	G	a56	K	k9	O	l13
D	k5	H	a52	L	d14		





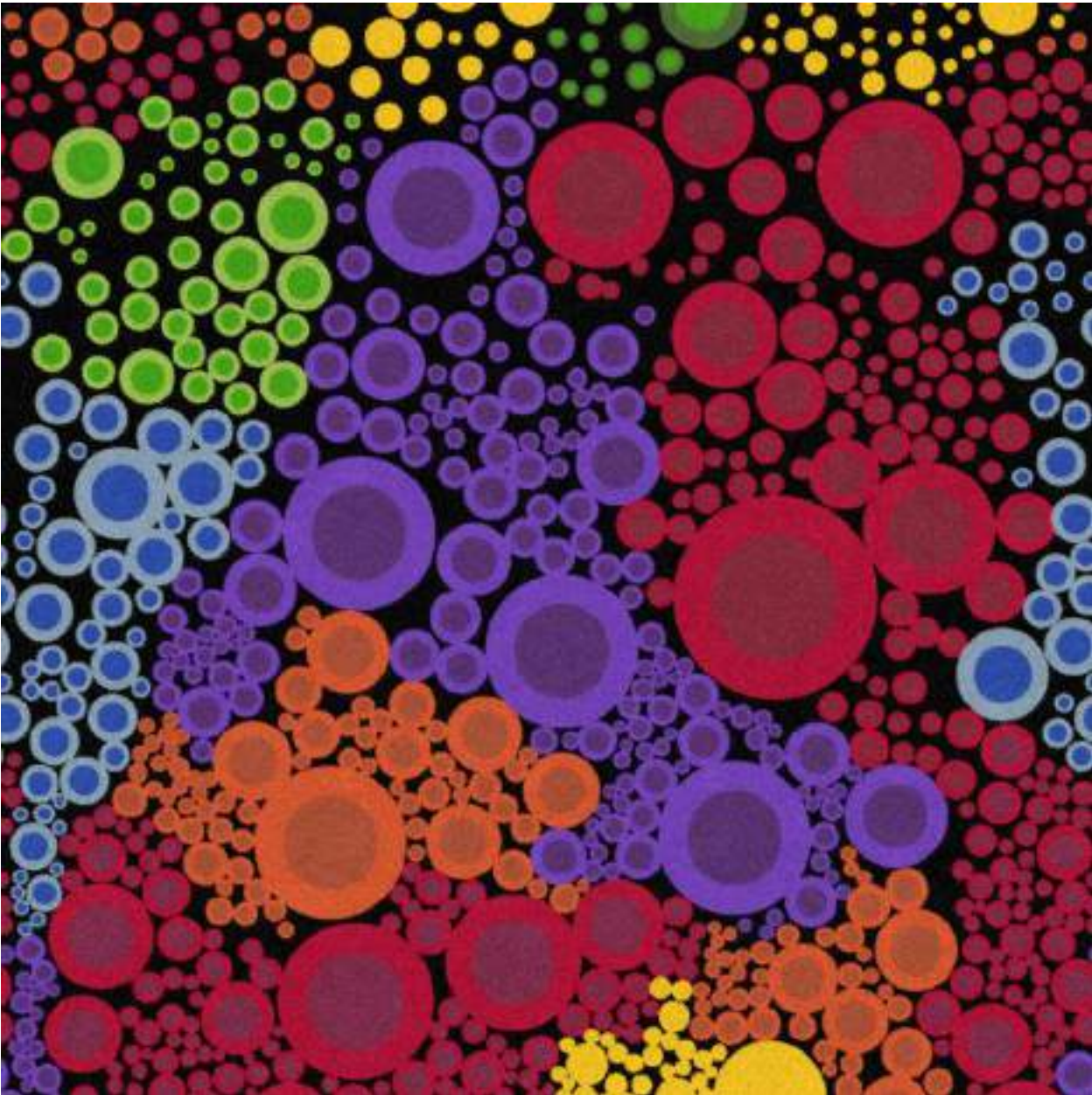
Style: TV-240826
Repeat: 144x299.4
Color: Custom

Order# 80682 | Injection Dyed

YARN COLORS

A	Black	E	e42	I	h19	M	e39
B	g5	F	l45	J	B27	N	l15
C	k6	G	h4	K	e44		
D	P33	H	b19	L	K38		





Style: TV-240812
Repeat: 72x133.2
Color: Custom

Order# 80650 | Injection Dyed

YARN COLORS

A	BLACK	E	j7	I	H11	M	b4
B	i29	F	j9	J	g33	N	l45
C	l42	G	J41	K	l45	O	h47
D	a7	H	i27	L	P33		





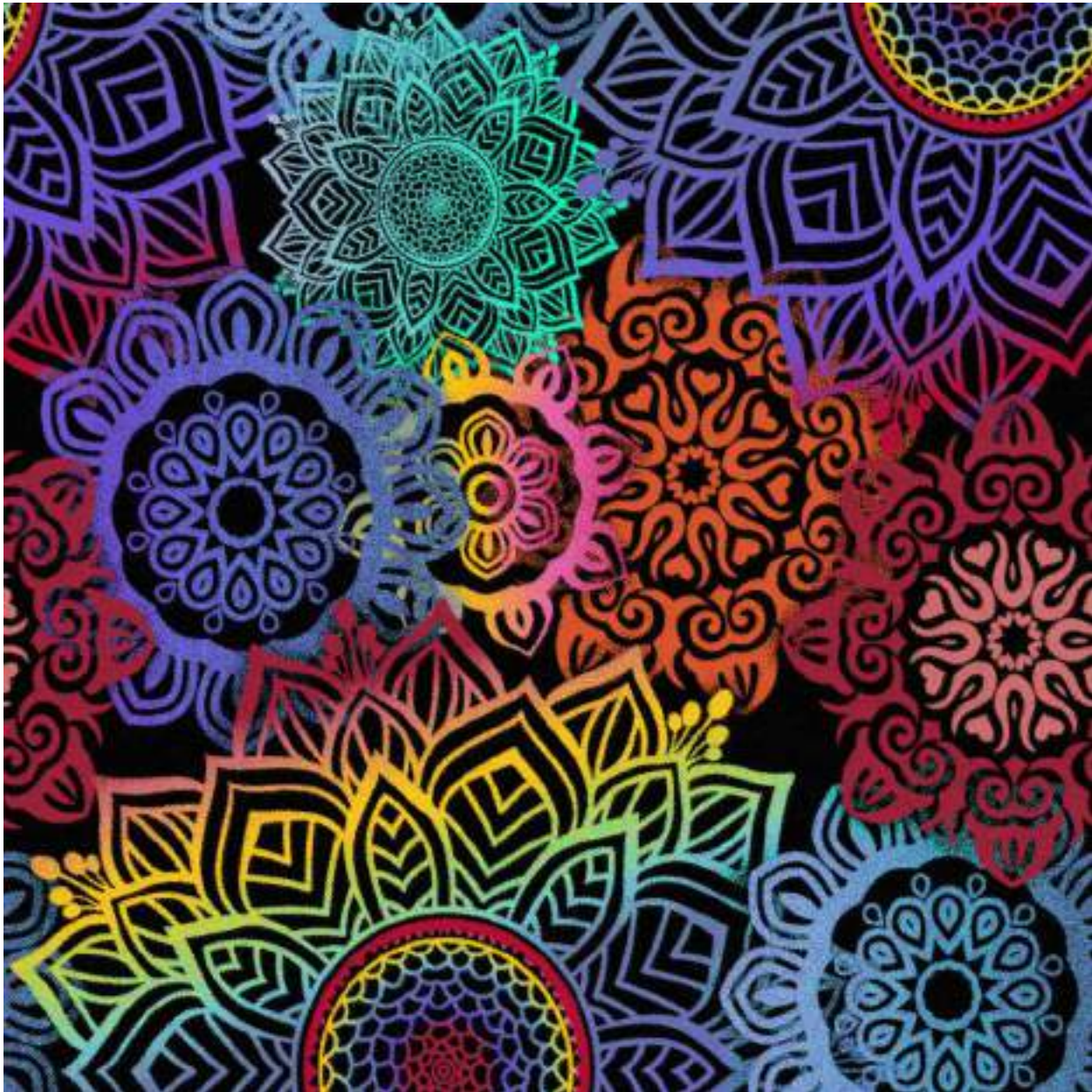
Style: TV-240826
Repeat: 144x299.4
Color: Custom

Order# 80449 | Injection Dyed

YARN COLORS

A	Black	E	e42	I	h19	M	e39
B	g5	F	k4	J	g41	N	c46
C	k6	G	h4	K	e44		
D	i44	H	b19	L	f40		





Style: TV-240805
Repeat: 144x287.92
Color: Custom

Order# 80634 | Injection Dyed

YARN COLORS

A	Black	E	i10	I	l45	M	D8
B	j9	F	H11	J	f10		
C	l48	G	h40	K	b39		
D	l48	H	k46	L	h39		





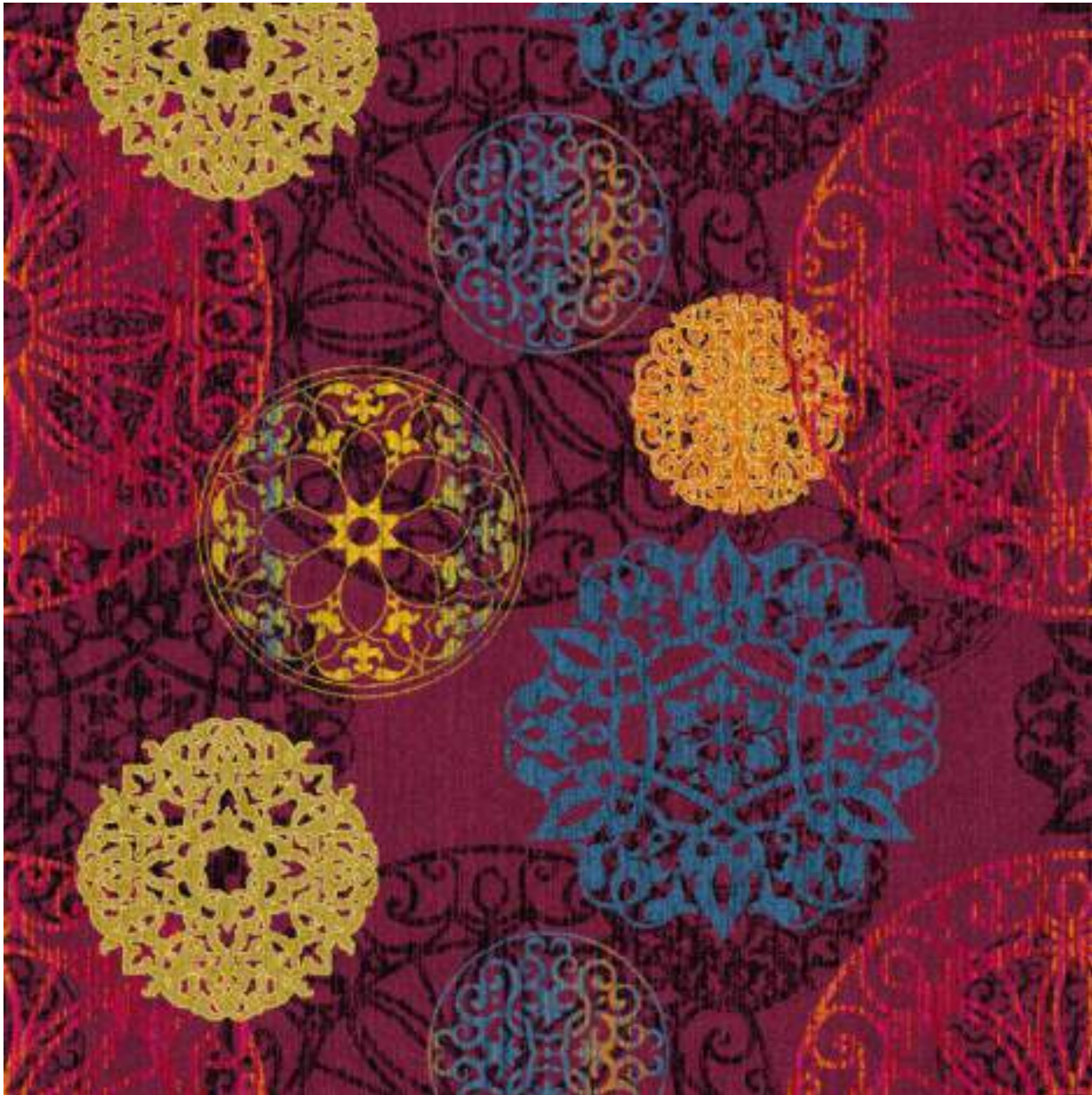
Style: TV-240903-2
Repeat: 144x162
Color: Custom

Order# 80674 | Injection Dyed

YARN COLORS

A	Black	E	D34	I	J40	M	c40
B	h55	F	l15	J	d19		
C	B43	G	l43	K	f19		
D	h56	H	D8	L	H11		





Style: TV-240726
Repeat: 72x54
Color: Custom

Order# 80407 | Injection Dyed

YARN COLORS

A	Black	E	b19	I	g20	M	f22
B	g45	F	b20	J	h19	N	e44
C	g5	G	g4	K	e22		
D	h7	H	h10	L	i23		





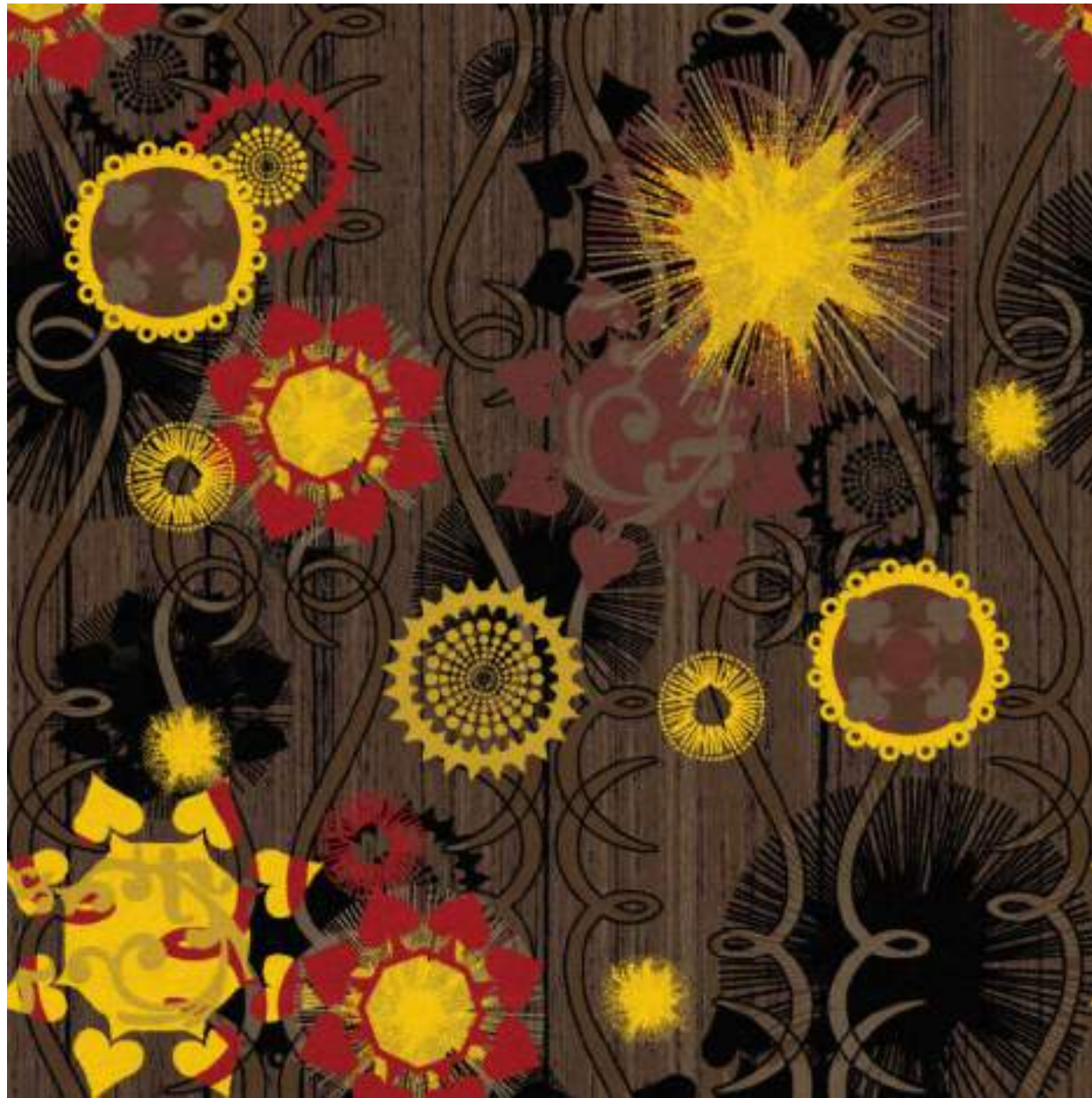
Style: TV-240909
Repeat: 144x242.8
Color: Custom

Order# 80725 | Injection Dyed

YARN COLORS

A	Black	E	N10	I	I45	M	G17
B	N15	F	5G2	J	A41	N	M3
C	I13	G	3K3	K	I43	O	D6
D	H43	H	H11	L	D8		





Style: TV-240904
 Repeat: 144x242.8
 Color:

YARN COLORS

A	BLACK	E	k5	I	g21
B	BLACK	F	a56	J	f21
C	a55	G	k4		
D	l6	H	a57		





Style: Eliana 004
Repeat: 144x407.96
Color: Custom

Order# 80873 | Injection Dyed

YARN COLORS

A	I41	E	N9	I	H11
B	I43	F	C15		
C	5F1	G	B7		
D	A45	H	D8		





Style: Eliana 004
Repeat: 144x407.96
Color: Custom

Order# 80859 | Injection Dyed

YARN COLORS

- | | | | | | |
|---|-------|---|----------|---|-------------|
| A | Black | E | A45 | I | MOCHA CREAM |
| B | J33 | F | K7 | | |
| C | B16 | G | RED CLAY | | |
| D | E24 | H | H11 | | |





Style: TV-240731
Repeat: 144x168.2
Color: Custom

Order# 80818 | Injection Dyed

YARN COLORS

A	Black	E	I43	I	D8
B	H11	F	H9	J	O18
C	M39	G	I45	K	D11
D	B39	H	A45		





Style: TV-240731
Repeat: 144x168.2
Color: Custom

Order# 80799 | Injection Dyed

YARN COLORS

A	Black	E	G17	I	H9
B	K33	F	5F1	J	M3
C	I43	G	A45	K	D3
D	I48	H	H11		





Style: TV-149-200 Hoover Dam
Repeat: 73.2x73.2
Color: Custom

Order# 80774 | Injection Dyed

YARN COLORS

- | | | | |
|---|-------|---|-----|
| A | Black | E | L38 |
| B | E28 | F | H11 |
| C | N27 | G | M20 |
| D | N42 | H | K25 |



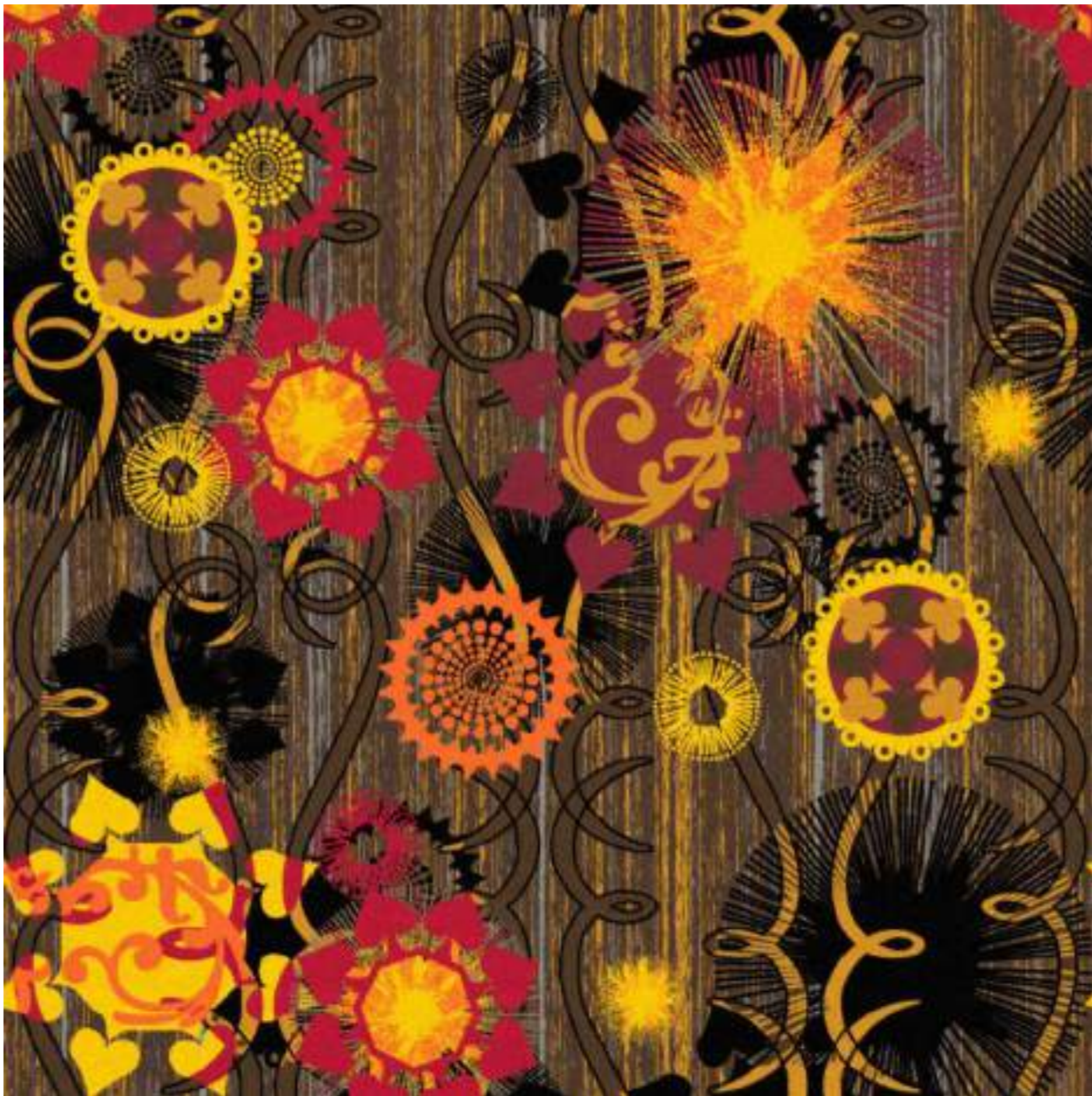


Style: TV-240920
Repeat: 144x242.8
Color:

YARN COLORS

A	Black	E	i55	I	d16	M	b2
B	b54	F	a52	J	k9	N	l13
C	l6	G	l56	K	d14		
D	k5	H	j7	L	k39		





Style: TV-240904
Repeat: 144x242.8
Color: Custom

Order# 80963 | Injection Dyed

YARN COLORS

A	BLACK	E	l42	I	F23
B	5G2	F	C18	J	D8
C	a55	G	l43		
D	l6	H	a57		





Style: TV-240930
Repeat: 72x72
Color:

YARN COLORS

A	BLACK	E	k5	I	b17	M	l57
B	g45	F	i44	J	h19	N	h47
C	k6	G	l44	K	c21		
D	a55	H	l56	L	g39		





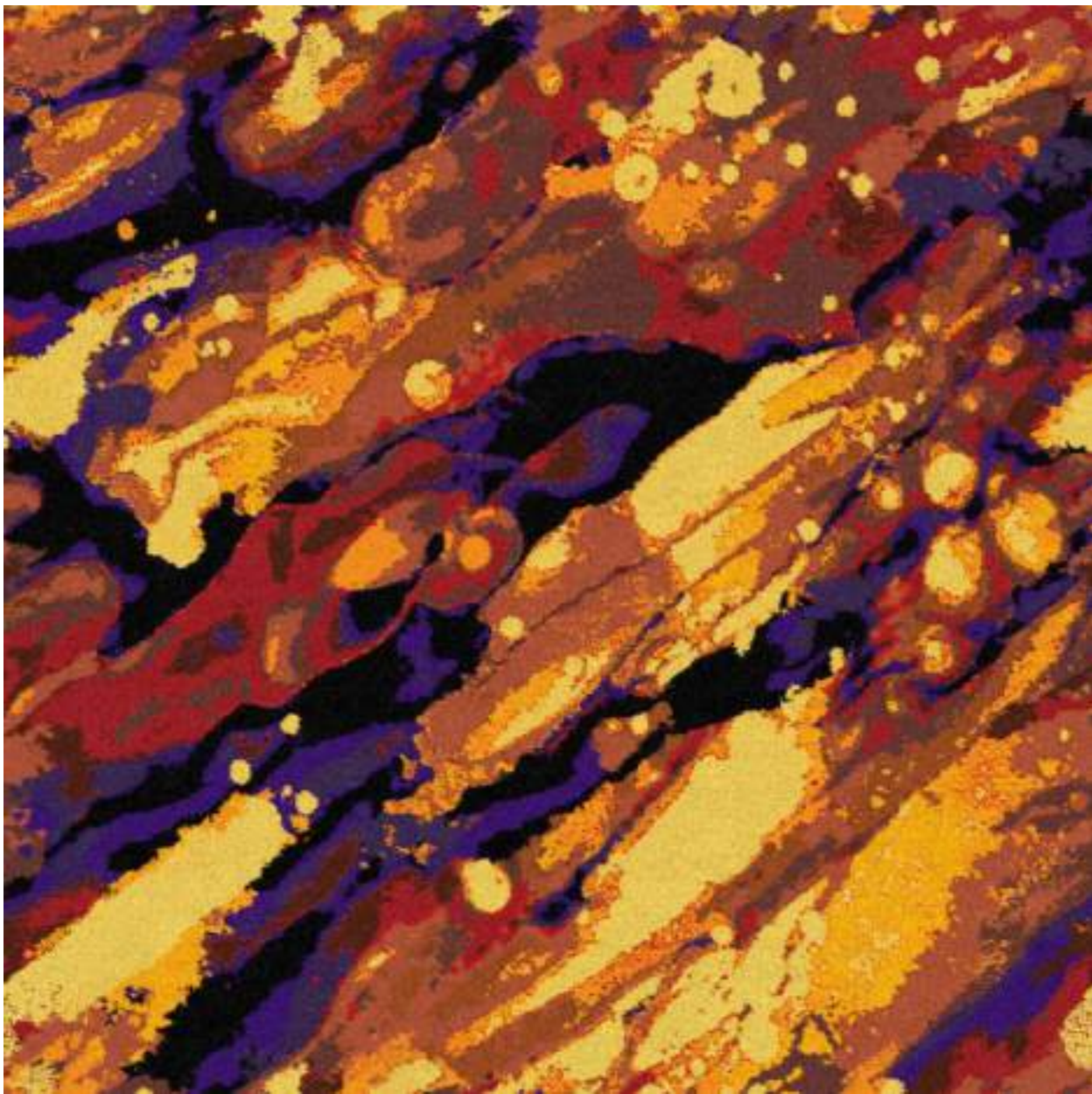
Style: TVKM2133-900
Repeat: 48.76x36.6
Color: Custom

Order# 65100 | Injection Dyed

YARN COLORS

- | | | | |
|---|-----|---|-----|
| A | h43 | E | k20 |
| B | e55 | F | d58 |
| C | c44 | G | e46 |
| D | k57 | H | g60 |





Style: TV-240929-1
Repeat: 72x72
Color:

YARN COLORS

A	Black	E	k42	I	j7	M	h21
B	l7	F	k4	J	d19		
C	k5	G	k3	K	f20		
D	l42	H	j5	L	e23		





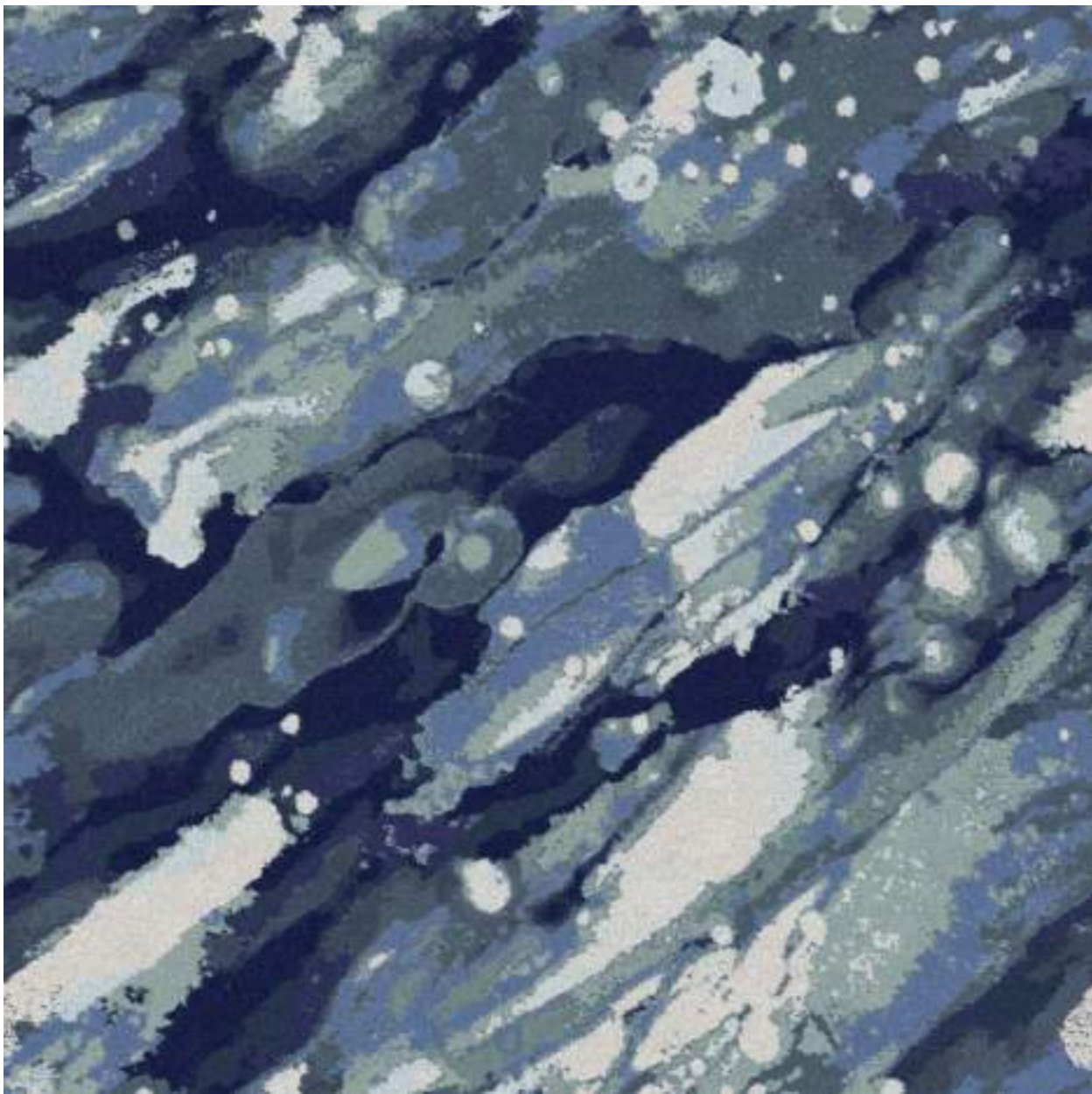
Style: TV504-200 V1
Repeat: 73.16x73.16
Color: Custom

Order# 43845 | Injection Dyed

YARN COLORS

- | | | | | | |
|---|------------|---|-----------|---|-------------|
| A | Black | E | CRIMSOM | I | MOCHA CREAM |
| B | GARNET | F | ACORN | | |
| C | BLUE FURY | G | RED CLAY | | |
| D | GALVANIZED | H | DANDELION | | |



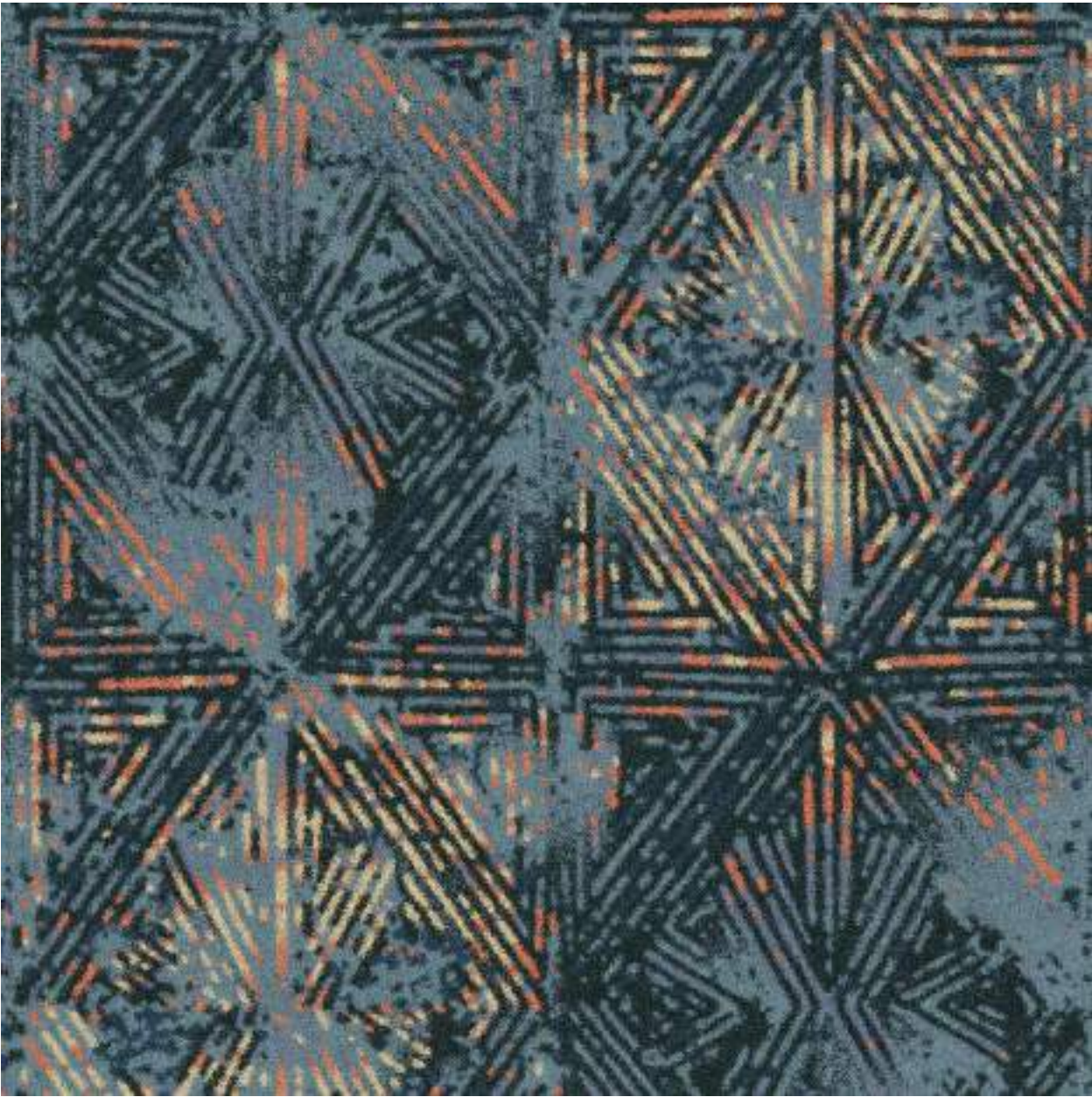


Style: TV-240929
Repeat: 72x72
Color:

YARN COLORS

A	■	i43	E	■	j45	I	■	d38	M	■	k49
B	■	g44	F	■	f46	J	■	d37			
C	■	i41	G	■	j47	K	■	e38			
D	■	j44	H	■	i39	L	■	h37			






Style: TV-831
Repeat: 36x44
Color: Custom

Order# 66311 | Injection Dyed

YARN COLORS

- | | | | | | |
|---|---|-----|---|---|-----|
| A |  | c43 | E |  | f47 |
| B |  | e43 | F |  | c50 |
| C |  | j3 | | | |
| D |  | i39 | | | |





Style: TV-22511-10

Pattern: 144in x 144in repeat

Color: Default

YARN COLORS

A61	H6	C4	I5	K21	J52	C22	E22
H4	I54	K3	I56	E45	E40	I14	I58
C5	G8	K53	E44	J16	I52	J57	H19
H7	K54	I57	A52	F40	C51	G57	F19












Style: TV-700
Repeat: 146.32x121.92
Color: Custom

Order# 66323 | Injection Dyed

YARN COLORS

- | | | | | | | | | |
|---|---|-----|---|---|-----|---|---|----|
| A |  | k43 | E |  | a41 | I |  | g9 |
| B |  | k4 | F |  | e17 | | | |
| C |  | k8 | G |  | g22 | | | |
| D |  | i9 | H |  | k40 | | | |





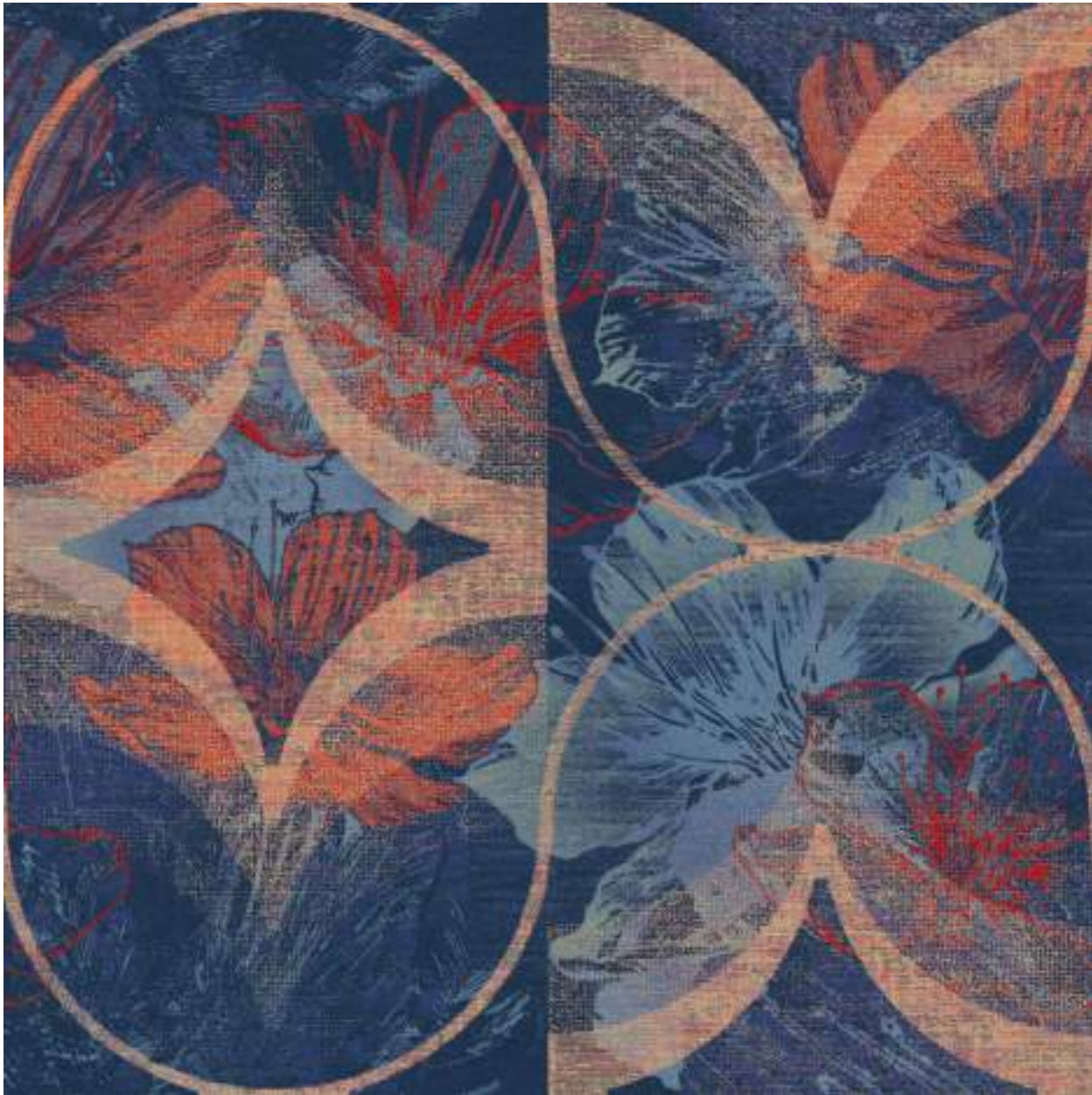
Style: TV-864
Repeat: 146.32x121.92
Color: Custom

Order# 66335 | Injection Dyed

YARN COLORS

- | | | | | | |
|---|---|-----|---|---|-----|
| A |  | e43 | E |  | b41 |
| B |  | d42 | F |  | b22 |
| C |  | b20 | G |  | d22 |
| D |  | j9 | H |  | f40 |













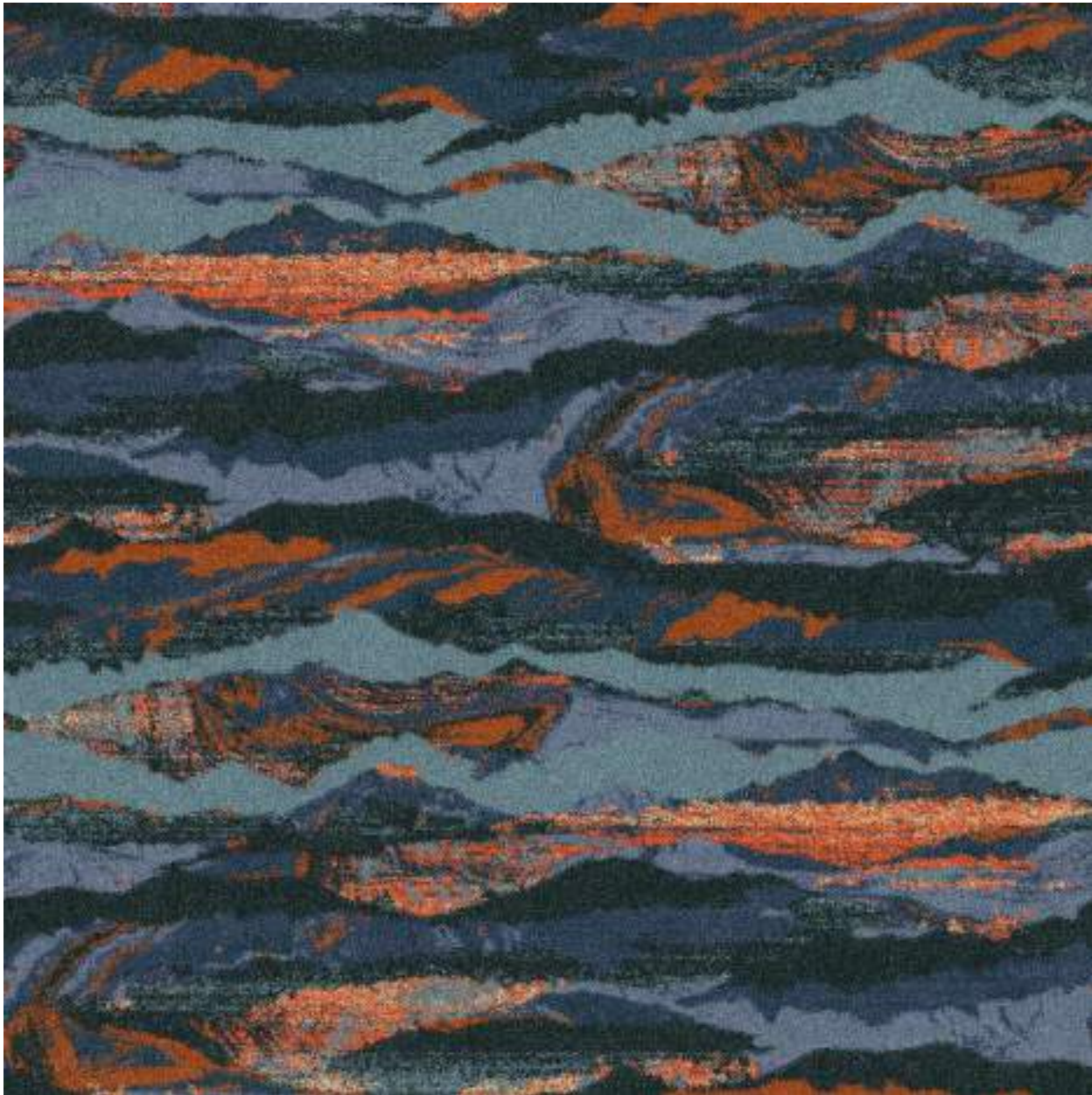
Style: TV-812
Repeat: 144x144
Color: Custom

Order# 64343 | Injection Dyed

YARN COLORS

- | | | | | | |
|---|---|---|---|---|---|
| A |  e42 | E |  j9 | I |  d38 |
| B |  h41 | F |  i10 | J |  d13 |
| C |  g46 | G |  h46 | | |
| D |  k4 | H |  g47 | | |






Style: TV-830
Repeat: 36x36
Color: Custom

Order# 66309 | Injection Dyed

YARN COLORS

- | | | | | | |
|---|---|-----|---|---|-----|
| A |  | c43 | E |  | j9 |
| B |  | e43 | F |  | i39 |
| C |  | i40 | G |  | f47 |
| D |  | j5 | H |  | c50 |





Style: 5035B200 Painted Butterfly 1

Repeat: 73.16x73.16

Color: Custom

Order# 43829 | Injection Dyed

YARN COLORS

A	Black	E	BLUE FURY	I	ACORN	M	PINK
B	GARNET	F	VALOR	J	RED CLAY	N	GALVANIZ
C	BEET	G	CHINA SEA	K	SAGUARO	O	MOCHA CF
D	ACAJOU	H	CRIMSOM	L	DANDELION		













Style: Eliana 005
Repeat: 144x407.96
Color: Custom

Order# 76661 |

YARN COLORS

A		k43	E		b20	I		a25
B		k54	F		h19			
C		i55	G		g33			
D		h7	H		g41			





Style: TV-711-201 Gold Strike-E
Repeat: 73.2x73.2
Color: Custom

Order# 45366 | Injection Dyed

YARN COLORS

- | | | | | | |
|---|-----------|---|-----------|---|-------------|
| A | BEET | E | ACORN | I | GALVANIZED |
| B | ACAJOU | F | RED CLAY | J | MOCHA CREAM |
| C | BLUE FURY | G | SAGUARO | | |
| D | CRIMSOM | H | DANDELION | | |





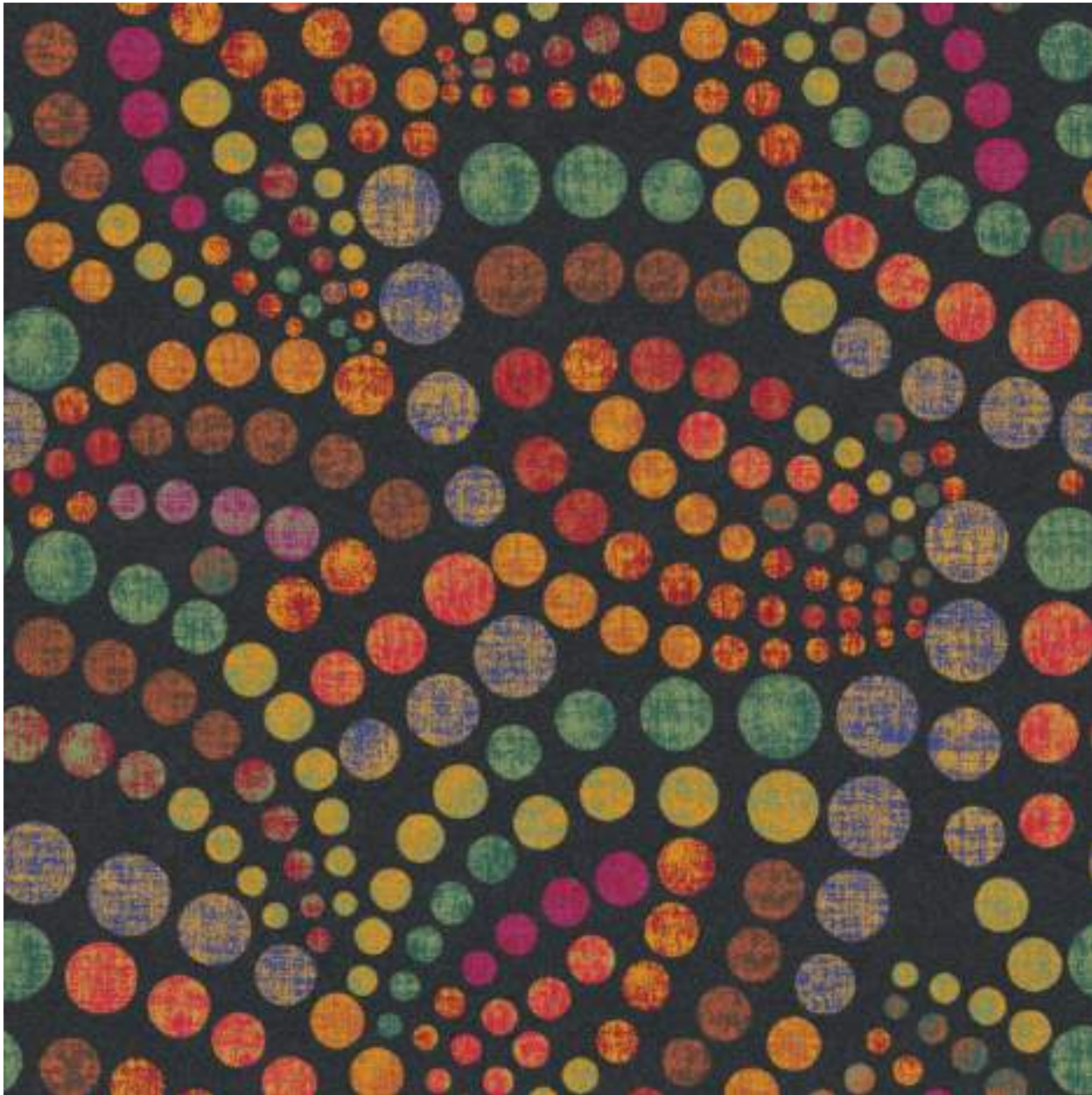
Style: 1033A200 Les Jardin
Repeat: 36.6x36.6
Color: Custom

Order# 43879 | Injection Dyed

YARN COLORS

- | | | | | | |
|---|-----------|---|-----------|---|-------------|
| A | Black | E | ACORN | I | MOCHA CREAM |
| B | ACORN | F | RED CLAY | | |
| C | CHINA SEA | G | SAGUARO | | |
| D | CRIMSOM | H | DANDELION | | |





Style: TV723-700 Tarkanian
Repeat: 73.2x73.2
Color: Custom
Order# 43849 | Injection Dyed

YARN COLORS

A	 P47	E	 B27	I	 C16
B	 F44	F	 J27	J	 L14
C	 C45	G	 N32	K	 L38
D	 H43	H	 C18		





Style: Bolivia 001
Repeat: 72x72
Color: Custom

Order# 67905 | Injection Dyed

YARN COLORS

A		c43	E		h10	I		f21
B		i41	F		a41	J		l40
C		e8	G		a21	K		g38
D		ig	H		f19	L		i38





Style: 4040B200 Venetian Scroll
Repeat: 48.76x48.76
Color: Custom

Order# 43887 | Injection Dyed

YARN COLORS

- | | | | |
|---|-----------|---|-------------|
| A | Black | E | ACORN |
| B | BEET | F | DANDELION |
| C | BLUE FURY | G | MOCHA CREAM |
| D | CRIMSOM | | |





Style: Paisley 701
Repeat: 72x72
Color: Custom

Order# 63577 | Injection Dyed

YARN COLORS

A		P47	E		I1	I		E27
B		O47	F		E23	J		E28
C		J47	G		N36	K		D10
D		L34	H		B44			





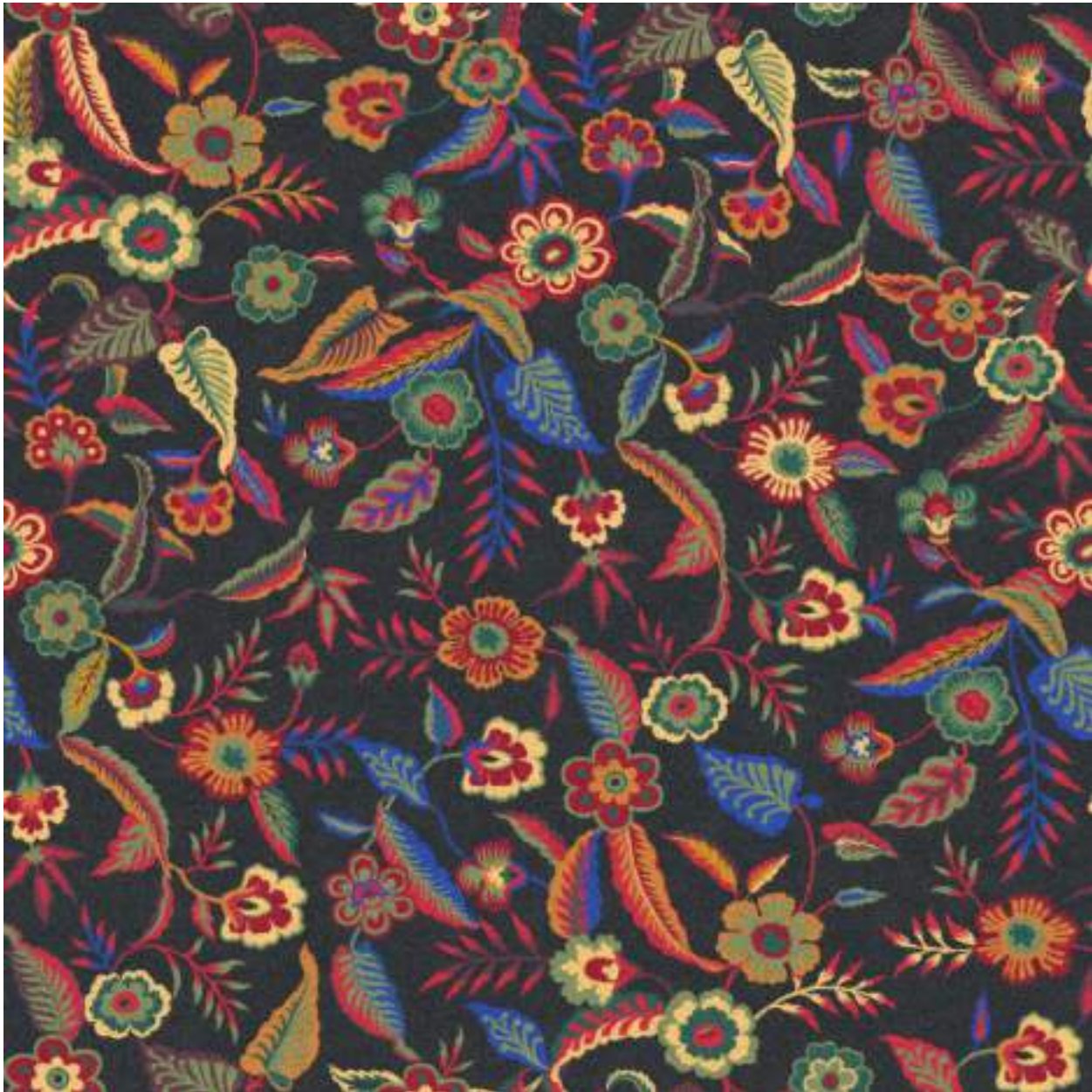
Style: TV-149-200 Hoover Dam
Repeat: 73.2x73.2
Color: Custom

Order# 45706 | Injection Dyed

YARN COLORS

- | | | | |
|---|-----------|---|-----------|
| A | Black | E | CRIMSOM |
| B | ACAJOU | F | RED CLAY |
| C | BLUE FURY | G | SAGUARO |
| D | CHINA SEA | H | DANDELION |





Style: TV-712 Riviera_LVC
Repeat: 73.16x73.16
Color: Custom

Order# 50326 | Injection Dyed

YARN COLORS

A		O48	E		B27	I		P33
B		H45	F		C18	J		E1
C		C45	G		D15			
D		H43	H		L14			





Style: TV-712-001 Riviera 12ft
Repeat: 146.32x146.32
Color: Custom

Order# 51098 | Injection Dyed

YARN COLORS

A	■	O48	E	■	J27	I	■	L14
B	■	H45	F	■	C48	J	■	E1
C	■	C45	G	■	C18			
D	■	H43	H	■	C16			





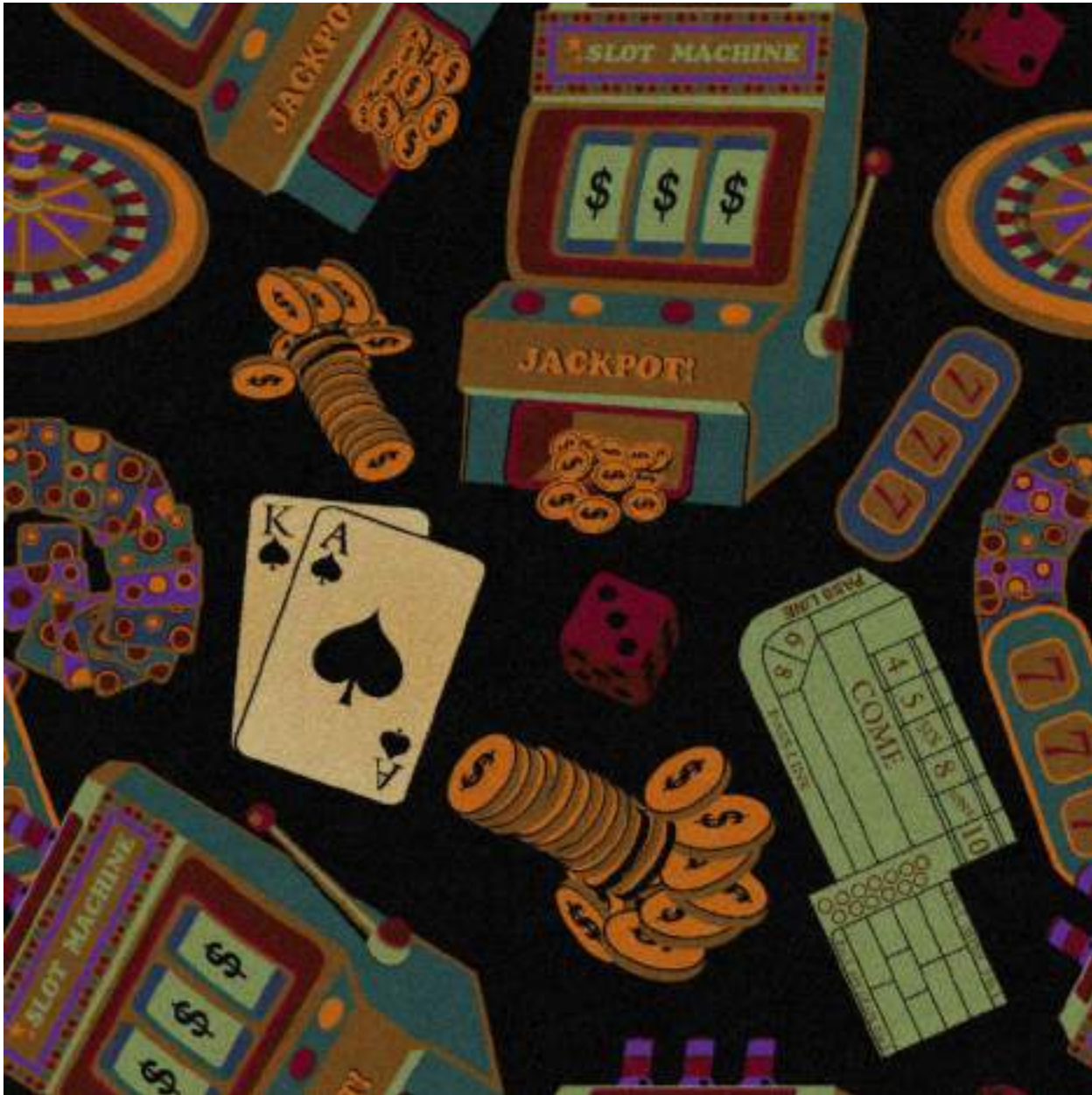
Style: TV-732
Repeat: 72x72
Color: Custom

Order# 66325 | Injection Dyed

YARN COLORS

A	 k43	E	 a41	I	 g9
B	 l19	F	 g22	J	 a60
C	 k4	G	 d22		
D	 k8	H	 k40		





Style: TV-724-200 Gambler Man
Repeat: 73.2x73.2
Color: Custom

Order# 44649 | Injection Dyed

YARN COLORS

A	Black	E	BLUE FURY	I	RED CLAY
B	GARNET	F	VALOR	J	SAGUARO
C	ACORN	G	CRIMSOM	K	DANDELION
D	CHINA SEA	H	ACORN	L	MOCHA CREAM





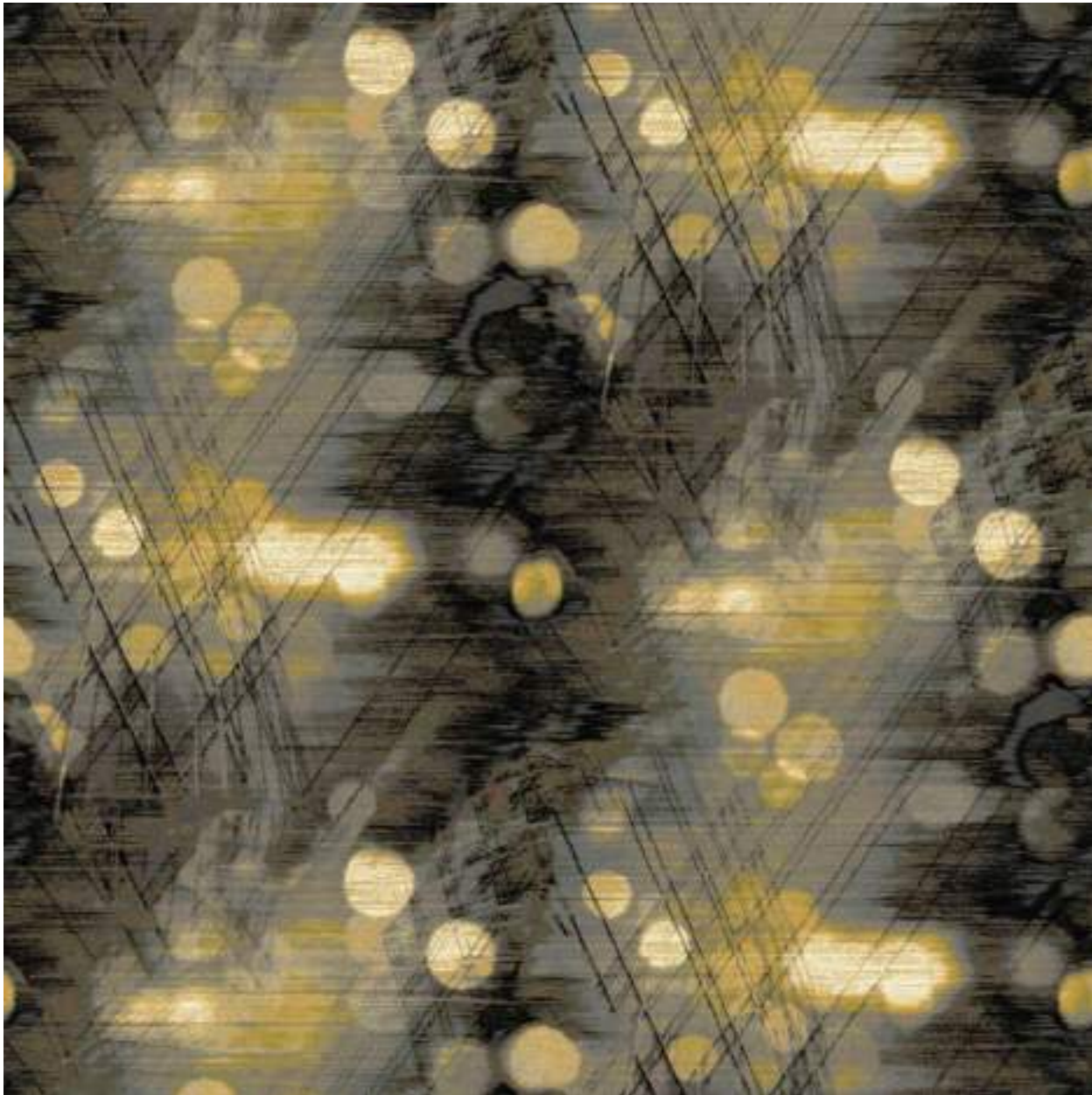
Style: TV-849
Repeat: 36x36
Color: Custom

Order# 65446 | Injection Dyed

YARN COLORS

A		c43	E		b41	I		g40
B		e42	F		l23	J		g39
C		d44	G		e23	K		d48
D		b14	H		i46	L		b23





Style: TVKM-2149

Repeat: 144x108.08

Color: Custom

Order# 70800 | Injection Dyed

YARN COLORS

A		Black	E		h54	I		e51
B		g54	F		l56	J		e15
C		c56	G		f52	K		e59
D		j54	H		f17	L		l60





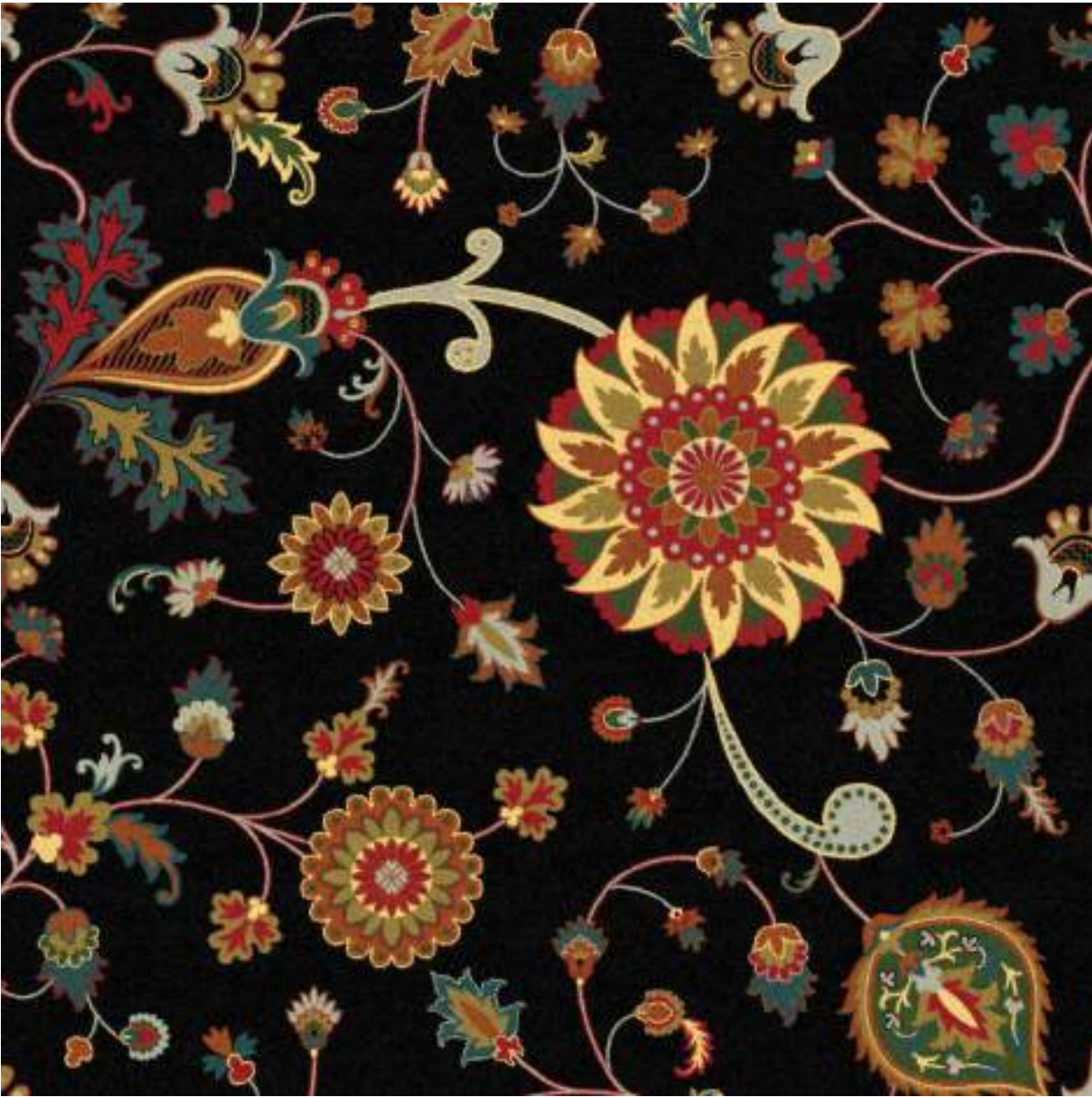
Style: TV-g13
Repeat: 72x72
Color: Custom

Order# 55657 | Injection Dyed

YARN COLORS

A	Black	E	g42	I	l21	M	d22
B	l8	F	k4	J	c22	N	e50
C	d7	G	j5	K	c17		
D	d18	H	j6	L	b51		





Style: TV-g17_half-drop
Repeat: 72x72
Color: Default

Injection Dyed

YARN COLORS

- | | | | | | |
|---|-------|---|-----|---|-----|
| A | Black | E | j5 | I | g51 |
| B | j28 | F | j6 | | |
| C | c44 | G | l21 | | |
| D | k4 | H | d22 | | |





Style: TVKM-2147
Repeat: 144x144
Color: Custom

Order# 70773 | Injection Dyed

YARN COLORS

A	Black	E	l56	I	e59
B	c56	F	f17	J	l60
C	j54	G	e51		
D	h54	H	e15		





Style: TV-22511-8
 Repeat: 144x144
 Color: Custom

Order# 74875 | Injection Dyed

YARN COLORS

A	g5	E	a52	I	k21	M	i14
B	l17	F	h7	J	c22	N	i13
C	c5	G	k3	K	f19	O	e60
D	c4	H	g8	L	c51		



PROPER CARPET MAINTENANCE: SAFEGUARDING YOUR INVESTMENT

By Tony Wideen

Professionals in the carpet industry know the right casino carpet is a defining factor when it comes to creating a distinct atmosphere and memorable first impression. But carpeting has to do with more than simply looking good when it's new. Beyond leaving people with an enjoyably vivid visual experience, carpeting has to be functional, properly maintained, and capable of demonstrating a high degree of appearance retention during its use.

For years hotel/casino properties have been plagued by needlessly high costs associated with premature carpet replacement due to the unnecessary wear and tear that results from improper maintenance of carpet fibers. The sales pitch for a spin bonnet machine that is a quick, low cost way to clean the surface of the carpet, doesn't explain that the machine also tears the carpet fibers apart quickly on any cut-pile carpet.



Poor maintenance causes carpet deterioration, which can lead to injury. Several months ago, a Las Vegas property was sued after a customer slipped and fell in a casino lounge. This carpet was installed in 2005 and the installer of the carpet was brought into the lawsuit as well. Please take note that if you have any bubbles or lines pushing up from the floor, your carpet may have delaminated. When this occurs there is separation from either the carpet and it's backing or the carpet and pad, caused by a breakdown of the glue or latex that keeps the carpet and backing together.

It's easy to put the blame for premature deterioration of carpeting on maintenance staffs that don't take the necessary pains to care for the product properly, but in most cases, the staff isn't negligent in their care of the carpet. The problem usually stems from a lack of proper training.

Carpet is given its warranty protection by the carpet manufacturer, not by the cleaning equipment manufacturer. But, it's the cleaning equipment manufacturer that has become responsible for training the maintenance personnel that play such an important role in safeguarding the carpet's integrity. In many instances, inferior cleaning equipment is being purchased and used solely because it can save time and labor, and it could be destroying the carpet's original appearance in a very short period of time. Thus the cycle of inadequate maintenance that leads to unnecessary replacement costs. In the competitive hotel/casino market, hospitality users can't afford to keep a carpet in place that no longer offers that vivid visual appeal they desired.

Managers need to be informed of the kind of training necessary for staff to learn more about carpet fiber itself and carpet construction. It is important to learn about the potentially harmful affects various types of cleaning equipment have on the carpet. When they have the knowledge about the fibers carpets are made of – wool, nylon, polypropylene, polyester or a blend of these materials, the various types of construction (woven, tufted, CYP, hand rugs, made in cut-pile, loop or cut-loop styles) used in conjunction with the dying processes (piece, skein, dye injection or solution dyed) –

they can maintain these products much more effectively. This will keep the carpet's performance and appearance retention at its peak much longer, thus saving substantial dollars in replacement costs and eliminating the problem of having to live with a dull appearance until future budgets are approved. Specialized training can only come from the real source of information about the carpet itself – the carpet manufacturers.

Several important facts to keep in mind:

- Equipment manufacturers and distributors don't warrant the carpet – the carpet manufacturers do.
- The use of improper equipment will result in a much quicker loss of color.
- Over cleaning, as well as using excess water, causes delamination of the carpet.
- High speed equipment destroys tip definition of cut-pile carpet quickly.
- Worthless equipment gets only surface dirt off and grinds in the rest.
- Improper use decreases performance and increases replacement time significantly.
- Poor maintenance voids every manufacturer's warranty.

Taking a more proactive approach, from installation forward, includes making sure managers are aware of how to maintain carpets properly. By offering and meeting the training needs of maintenance/housekeeping staffs, the casino saves on labor costs, improves appearance retention and adds years of service to installed carpet.

The Carpet & Rug Institute encourages facility managers, designers, maintenance personnel and any others responsible for commercial carpet maintenance to develop and sustain a complete maintenance program for all commercial facilities. The following maintenance information is meant as a guideline since casinos are open long hours and much more difficult to clean than a business office building open ten hours per day.

MAINTENANCE PLAN

Plan a maintenance program before installation so such factors as budget, personnel and areas of special consideration can be taken into account. Maintenance personnel are advised to:

- Obtain a detailed floor plan of facility.
- Identify areas of heavy soiling:
 - Track-off Regions: areas where carpet collects tracked- in soil from the outdoors or from hard-surfaced floors. Track off regions average 90 sq. ft. (6 x 15) at building entrances, 10 sq. ft. (2 x 5) at internal doorways, and 40 sq. ft. (5 x 8) in corridors six feet wide.
 - Congested Channels: a concentrated channel of foot traffic, such as a doorway, stairwell or drinking fountain area. A congested channel averages three feet around a doorway to 10 feet around elevators.
 - Traffic Lanes: areas with the largest amount of foot traffic.

A complete and effective program should include three maintenance categories: preventative, daily and periodic.

1. Preventative maintenance measures to reduce the effects of soil:

- Entry Mats: placed in entryways and elevators, they will collect dirt before it reaches the carpeted area. Assure that the mats cover the distance of several footsteps.
- Color Selection: choose color appropriate to traffic areas and local soil conditions. Medium colors, tweeds and patterned carpets hide soil, while lighter colors mask fading.

2. Daily maintenance:

• Vacuuming is the most important and most cost-effective element of an efficient maintenance program. Vacuuming can remove more than 80 percent of dry soil on a daily basis. Vacuuming should be scheduled according to the amount of potential soil buildup of a particular area. The general recommendations for vacuuming frequency are as follows:

- Heavy traffic areas: daily
- Medium traffic areas: twice weekly
- Light traffic areas: once or twice weekly

• Vacuuming Equipment: Two types of vacuum cleaning equipment are available for daily maintenance of commercial installations. They are:

- Heavy-duty, wide track machines for wide, open areas. These should have powerful suction and an enclosed, high-efficiency particulate filtration bag and be equipped with adjustable cylindrical brushes to whip embedded soil to the surface.
- Industrial versions of the domestic upright for tighter areas. Should have the same features and should have hose and wand attachments for hard-to-reach areas. A backpack vacuum with a high airflow and high-efficiency filtration provides increased productivity.

• Periodic pile brushing with a pile lifter vacuum pre-conditions carpet and removes dry, deeply embedded soil from high traffic areas. This can be especially helpful prior to carpet cleaning.

3. Extraction Cleaning:

• Periodically scheduled extraction cleaning will remove accumulated soil not removed by regular vacuuming and spot removal. The Carpet and Rug Institute (CRI) suggests a monthly or as needed cleaning of transition areas, track-off regions and congested channels. Cleaning methods include:

- Absorbent compound (dry extraction)
- Absorbent pad or bonnet (don't ever use on casino, restaurant or hotel carpet)
- Dry foam (works for casinos best)
- Hot water extraction (steam cleaning)
- Rotary shampoo cleaning (don't ever use on casino, restaurant or hotel carpet)

NOTE: Use methods recommended by carpet manufacturer

Damage from spills can be minimized by immediate action. As soon as a spill occurs, blot with a clean, white, absorbent towel and repeat until the spill is fully absorbed. The CRI recommends using a professional spot removal kit, available from janitorial businesses. These kits contain a variety of cleaning agents, application materials as well as spot removal instructions. Be sure to follow instructions and take proper precautions when using cleaning agents. Lightweight portable extractors are available for more efficient removal of spills. These portable extractors assist in thoroughly removing spills, rinsing cleaning solutions, and extracting wet spills. It is important to adhere to manufacturer's spot removal instructions to prevent voiding existing warranties. Failure to follow these instructions could result in damaged carpet fibers.

Simple rules to be safe are as follows: vacuum, vacuum, vacuum, spot clean as needed. Never buy or use any type of spin-bonnet. Use a quality steam extractor and clean as little as possible.



THANK YOU

WE WOULD LOVE TO SERVE YOUR BUSINESS!

As one of the leading online casino, hotel and entertainment carpet manufacturers, we aim to be your true consulting partners. Our mission is to help you maximize your budget, while providing amazing customer service and quality carpets that enhance your property's visual appeal.

