



Rotary



UV Print



Indoor



Surface

Double-sided

surface /  
core colour

gold / black / silver	18472*	1.5 mm (1/16")	18482*	3.0 mm (1/8")
silver / black / silver	18471**			

\* One side brushed gold, other side matt silver  
\*\* Both sides matt silver

BENEFITS

- One product with two finishes
- Aluminium caps with a black phenolic core
- No paint filling required

APPLICATIONS

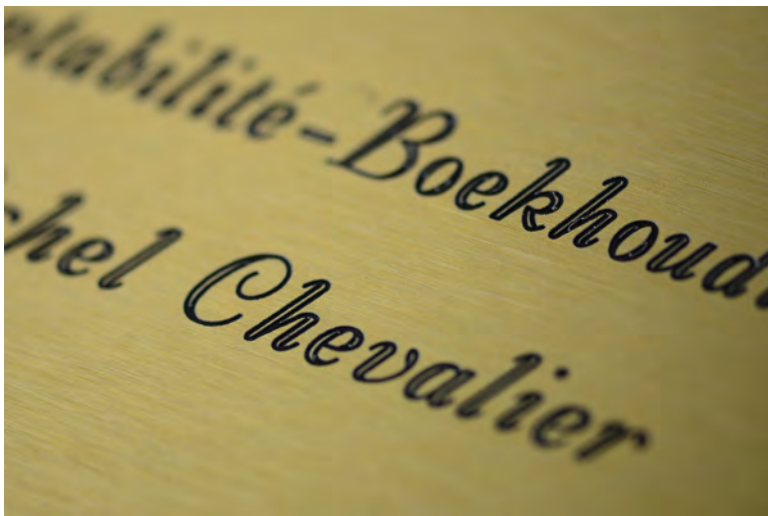
Professional interior signage, award plates, identification plates, signage

SPECIFICATIONS

Finish	Brushed, Matt
Composition	Aluminium / Phenolic
Engraving depth	0.3 mm (.012")
Full sheet	1 220 mm x 605 mm (48" x 23")
Half sheet	610 mm x 605 mm (24" x 23")
Quarter sheet	605 mm x 305 mm (23" x 12")
Other size	-

CAPABILITIES

Interior	■
Exterior	-
Shear	-
Saw	■
Silk screen	■
Hot stamp	-
Heat bending	-
Scratch resistant	■
Flexible	-
Break resistant	■
UV resistant	-
Min. temp.	-40°C (-40°F)
Max. temp.	180°C (356°F)



TECH TIPS

This material offers the advantages of aluminium without the inconvenients. Its aluminium surface on both sides and phenolic core save time and money by avoiding paint filling.

Printed colours for indication only. Cannot serve as a substitute for real material sample.

GRAVOGRAPH

