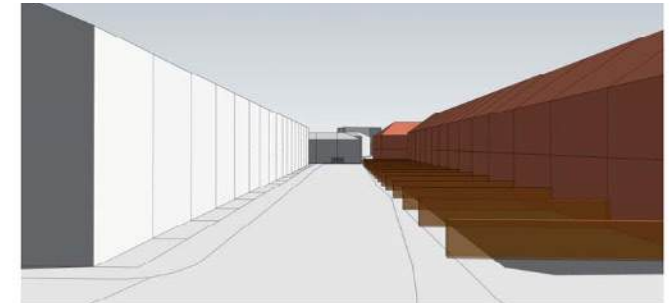


7.2 Pre-App 01 Graphic Overview (by others)



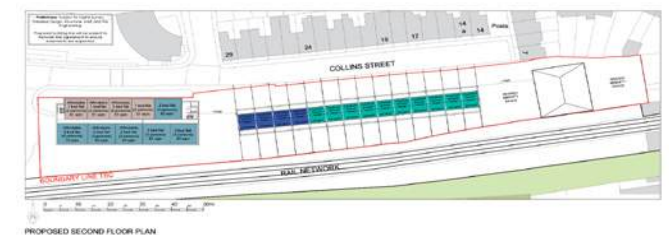
Massing Studies Option A1
View 1: Roofs Resembling Houses on Collins St



Massing Studies Option A1
View 2: Street Level View on Collins St

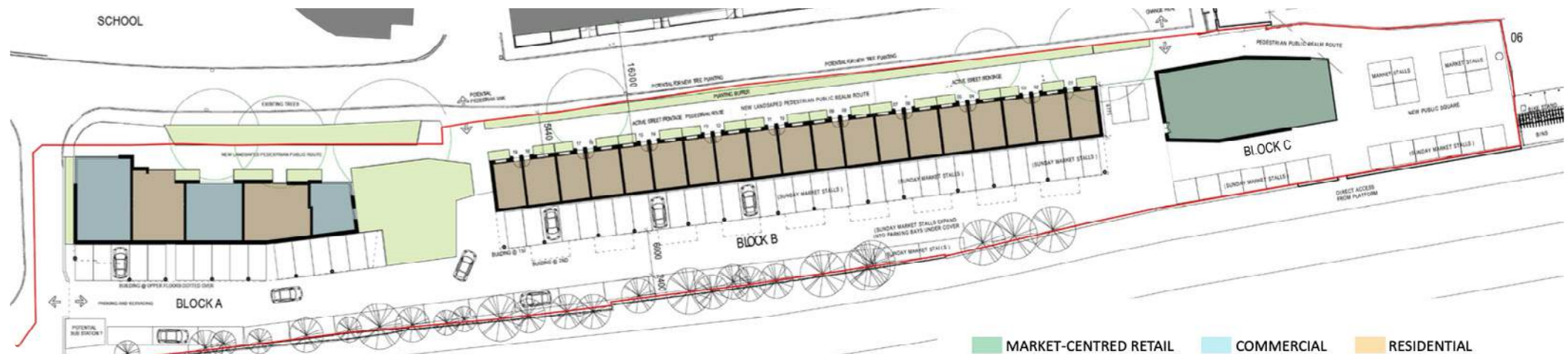
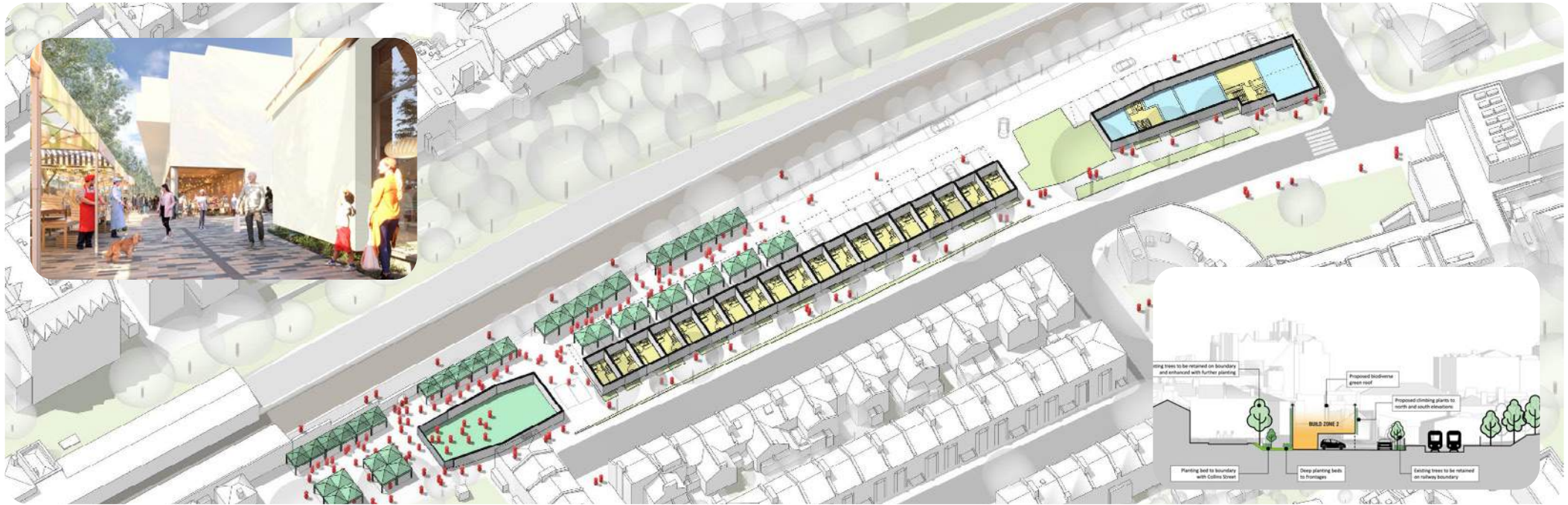


Massing Studies Option A1
View 3: Aerial View



7.2 Pre-App 02 Graphic Overview (by others)

Note: Block A and C are defined the other way round in JPA's proposal's

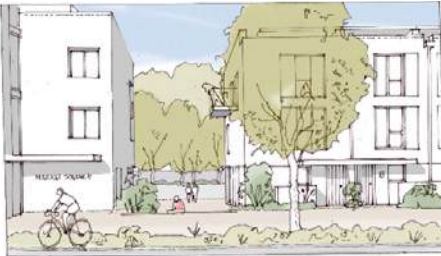


Blackheath Station Car Park - DAS

7.3 Pre-App 03 Graphic Overview (by JPA)



VIEW 1 - A view looking west of the new market square including Block A



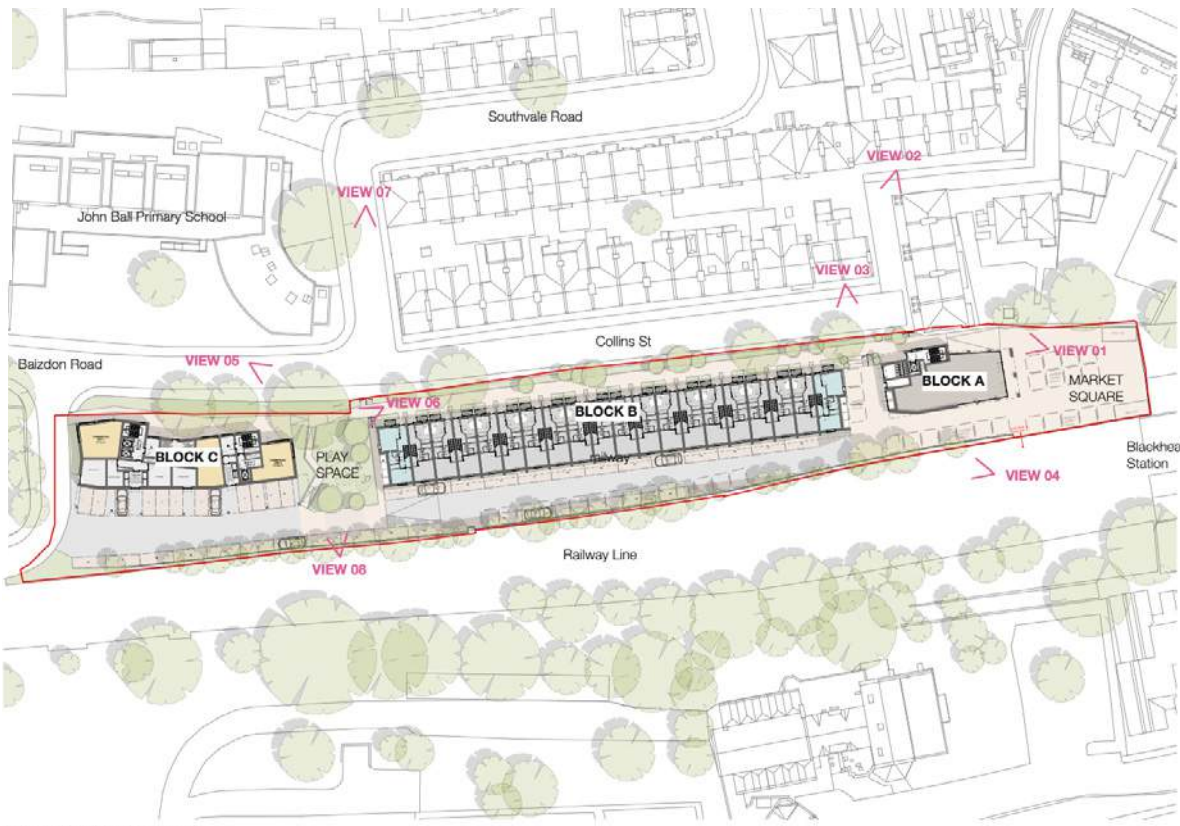
VIEW 3 - Looking south from Collins Street: Block A, B, and the space in-between



VIEW 5 - Looking east at Block B on right hand side from Balzdon Road



VIEW 7 - Block B from looking south on Southvale Road



Proposed Site Plan (not to scale)



Section Through Block B



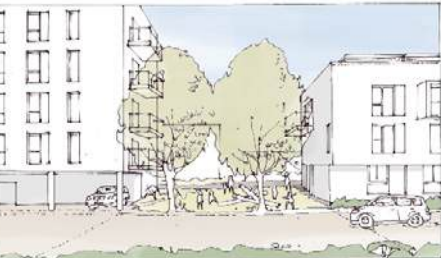
VIEW 2 - Looking south on Collins Street towards Blocks A and B



VIEW 4 - Looking at Block A and B from the station platform with the Market in the foreground



VIEW 6 - Block C, looking south west from new landscape pedestrian route with play space in the foreground



VIEW 8 - Illustration showing the natural surveillance of the play space between Block B and Block C as viewed from the station platform

7.3 Pre-App 04 Graphic Overview (by JPA)



Proposed Block B north elevation showing lower masonry to align with 7 Collins Street, dormer windows, book-end units, and front gardens

7.5 Pre-App 05 Graphic Overview (by JPA)

