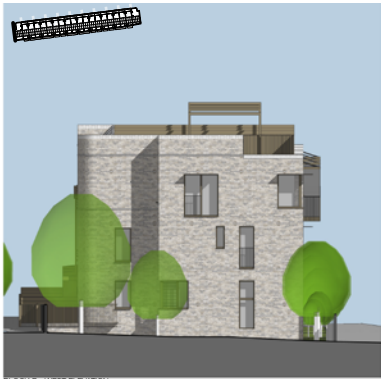


Blackheath Station Car Park - DAS

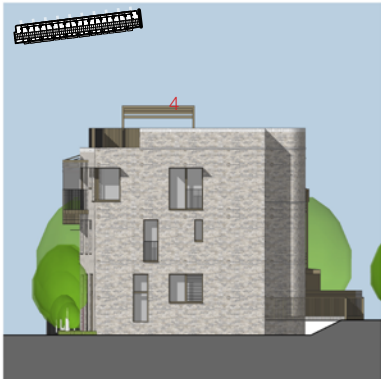
9.3 Block B - Elevations & Ground Floor Plan



BLOCK B - WEST ELEVATION



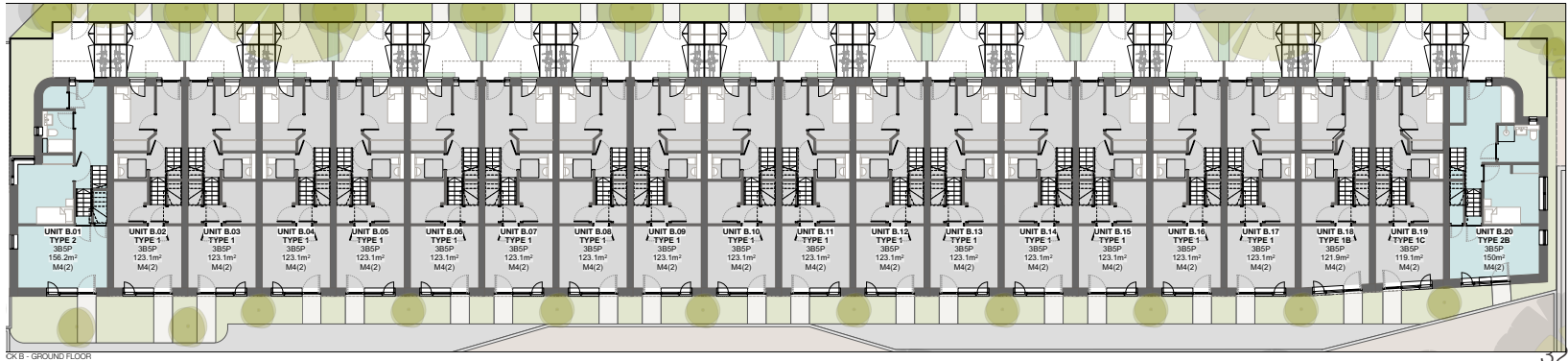
BLOCK B - SOUTH ELEVATION



BLOCK B - EAST ELEVATION

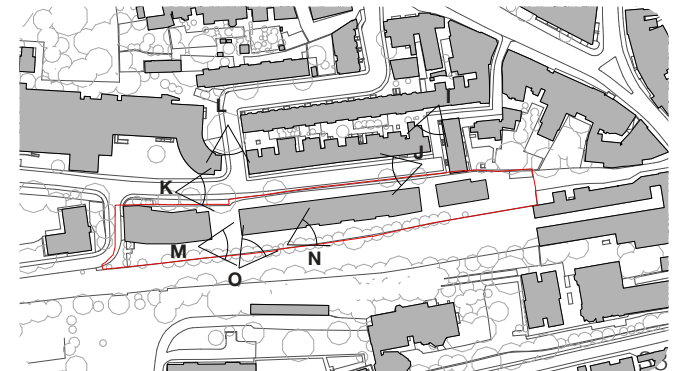


BLOCK B - NORTH ELEVATION

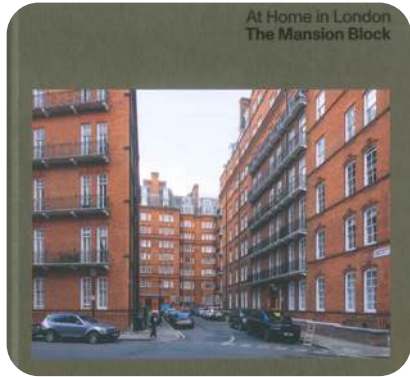


OK B - GROUND FLOOR

9.4 Proposed CGI - Block B Collins Street & Mews



10.0 Block C - Mansion Block Typology & Design Development



3, 4 & 5 Grote's Building, locally listed buildings showing formal window openings that has informed the elevation treatment of Block C



From Top to Bottom: Typology research based on the book "At Home in London: The Mansion Block" by Karin Templim (MACK, 2023). Photos by Matthew Blunderfield. Albert Hall Mansions (1851), Troy Court (1930), Du Cane Court (1935-37)



Sketches by JPA after DRP 02 exploring a formal elevation treatment to Block C akin to Mansion Block typology studies



Elevation studies by JPA after DRP 02 exploring a formal elevation treatment to Block C akin to Mansion Block typology studies. Proposal deemed problematic owing to reduction in opening to recessed balconies

Blackheath Station Car Park - DAS

10.1 Block C - Plans & Bay Studies



- MATERIALS KEY**
- 1 BRICK 1 - OFF-WHITE BRICK
 - 2 BRICK 2 - GREY
 - 3 BRICK 3 - GREEN GLAZED BRICK
 - 4 BRICKS COLOURED RAINSCREEN CLADDING
 - 5 LIMESTONE COLOURED PARAPETS, STRINGCOURSES + WINDOW SILL/ROOF
 - 6 LIMESTONE COLOURED FEATURE PANEL
 - 7 BRICKS COLOURED WINDOWS
 - 8 BRICKS COLOURED METAL SHADING LOUVRES
 - 9 BRICKS COLOURED METAL RAILINGS
 - 10 PHOTOVOLTAIC CANOPY
 - 11 ENTRANCE CANOPY
 - 12 TIMBER DOORS
 - 13 SLATE ROOF



BLOCK C - NORTH ELEVATION



BLOCK C - SOUTH ELEVATION