

10.2 Block C - Elevations

Block C Proposed elevations, changes since Pre-App 05

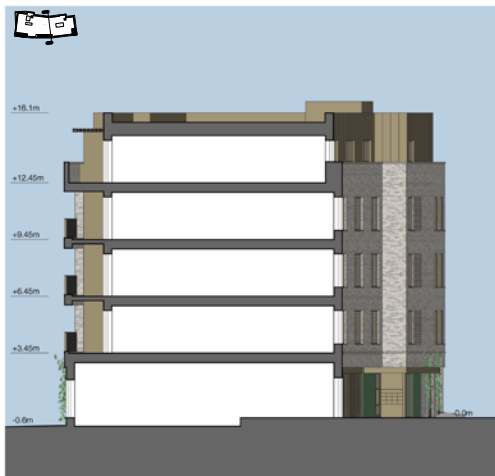
- Distinguished entrance canopies and stairwells with green glazed brick articulation to ground floor only
- More space for commercial unit signage provided
- Composition to fenestration has been refined with smaller window having decorative brickwork below so compressionally all window share a similar height
- Simplification of attic storey using bronze coloured metal cladding



BLOCK C - EAST ELEVATION



BLOCK C - SOUTH ELEVATION

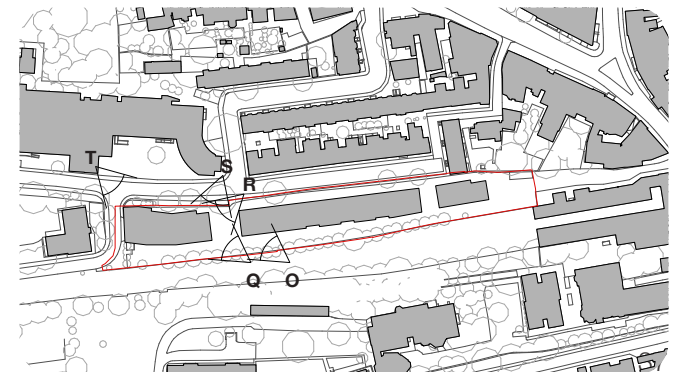


BLOCK C - EAST ELEVATION



BLOCK C - NORTH ELEVATION

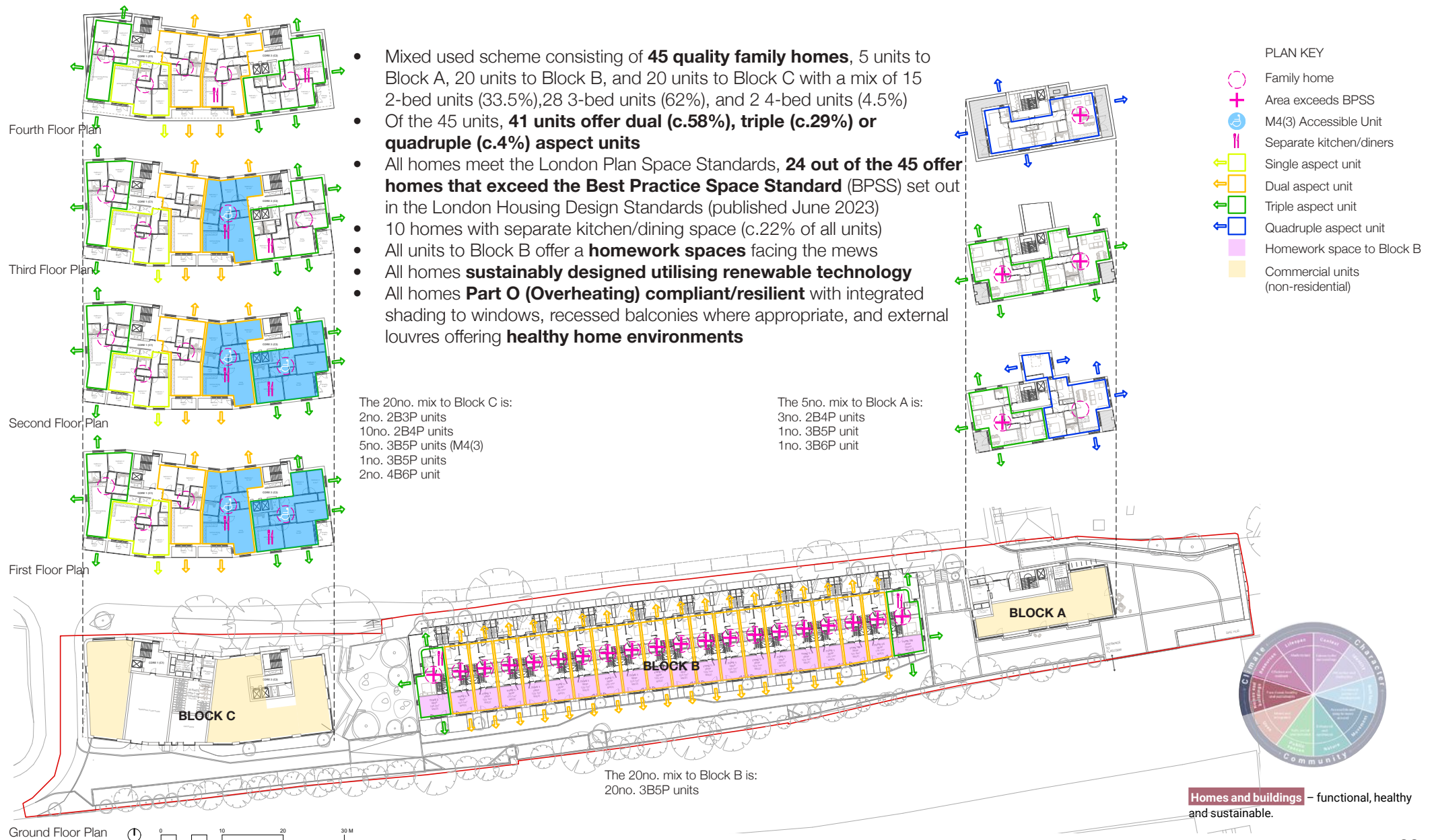
10.3 Block C - Proposed CGIls



11.0 General Plans

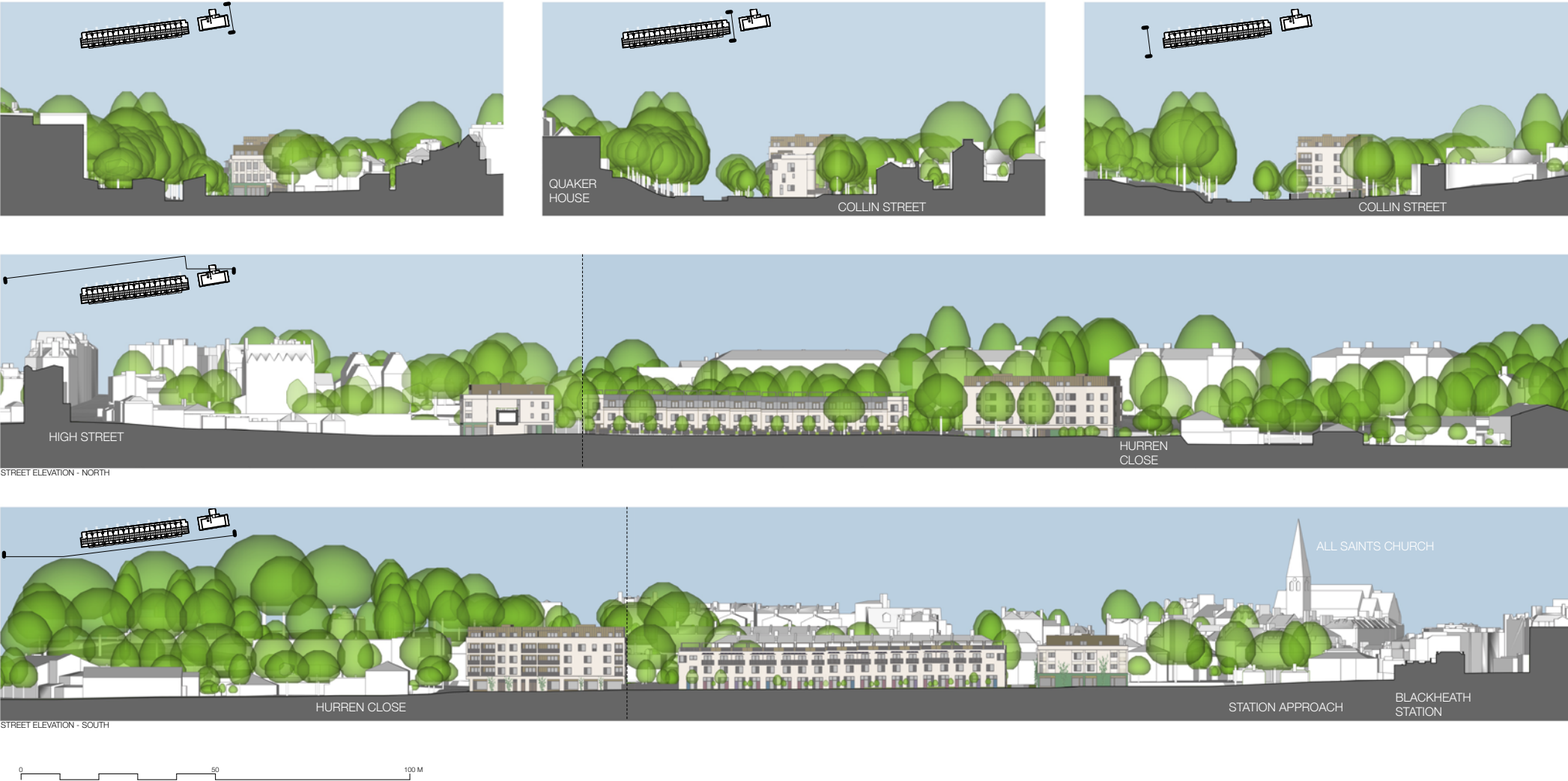


11.1 Residential Accommodation Summary



Blackheath Station Car Park - DAS

11.2 Site Elevations



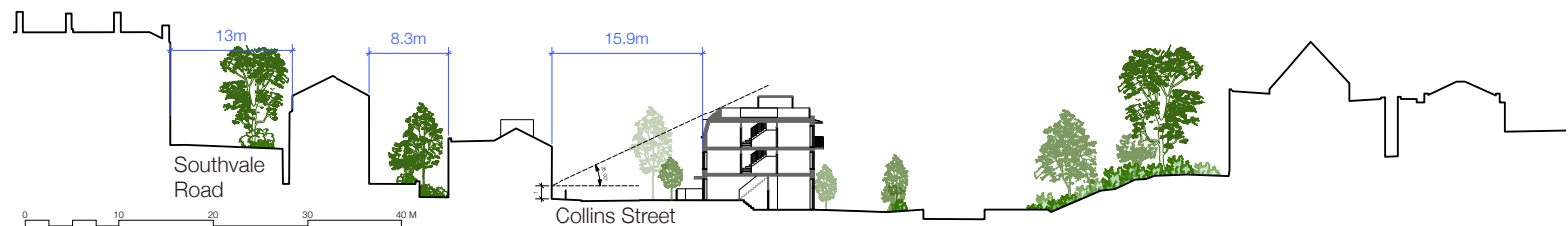
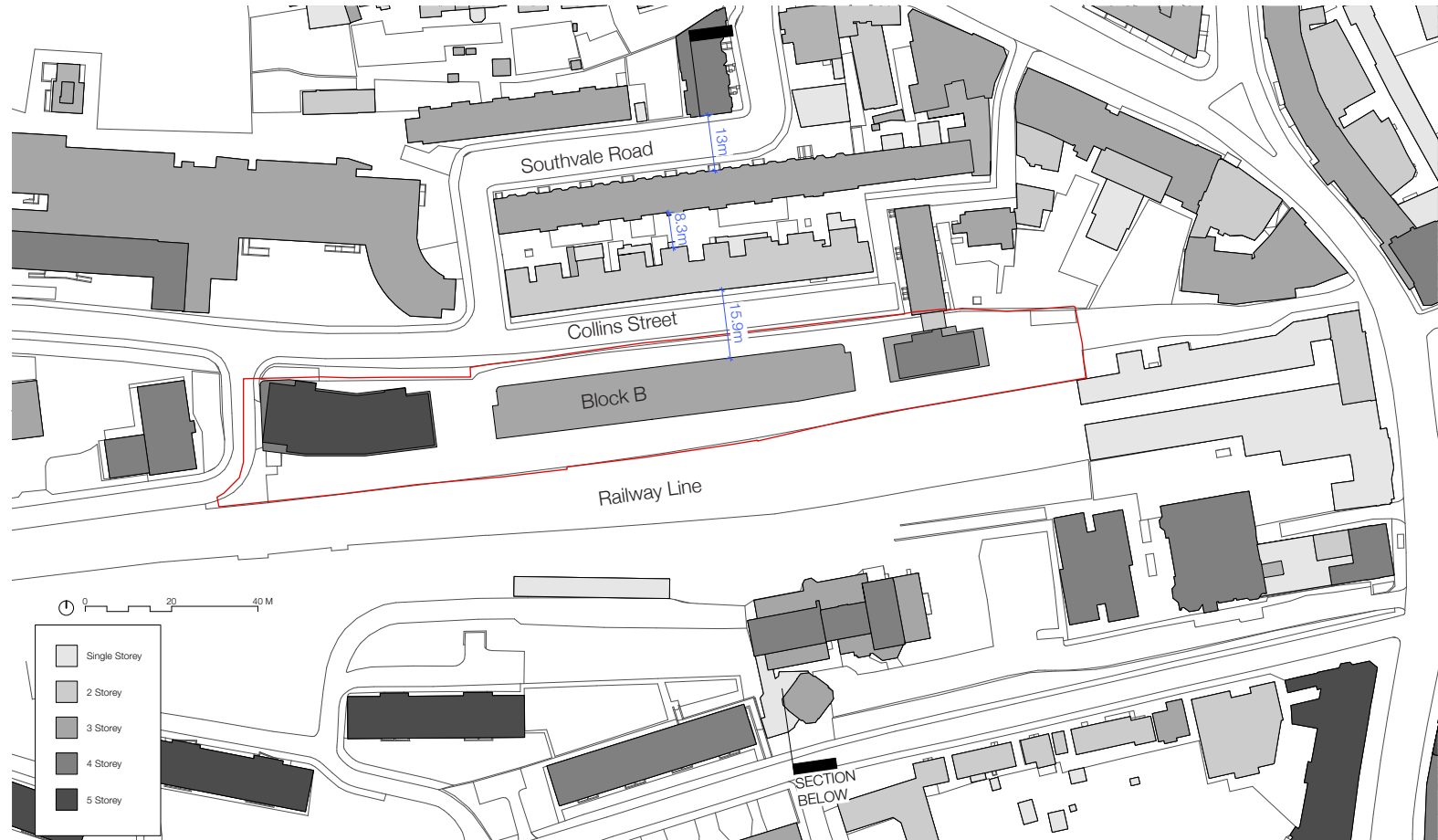
11.3 Site Distances

The site plan and site section adjacent illustrates comparable and separating distances shown in blue text.

The distance between the north facade of the proposed Block B to the south facade of the existing houses of Collins Street is greater than comparable distances found on Southvale Road.

The site plan adjacent also illustrates building heights in comparison with those found surrounding.

Please refer to accompanying daylight and sunlight reports included in this submission for further details.



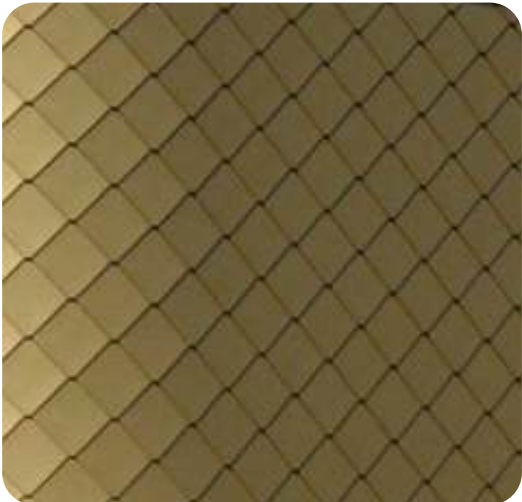
12.0 Architectural Materiality



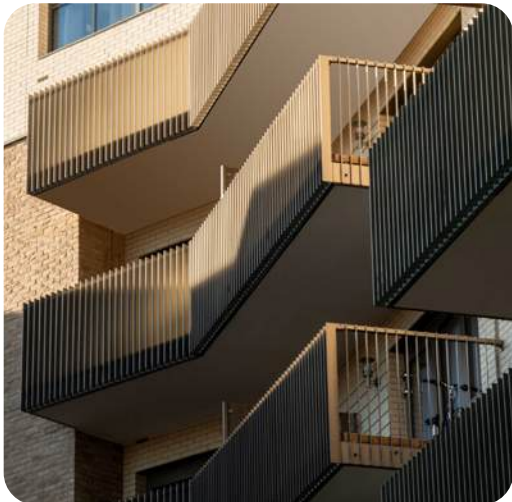
Primary off-white brick for block A, B & C



Primary buff brick alternative for block A, B & C



Rhomboid bronze coloured metal cladding shingles, adding architectural refinement to attic storey of Block A



JPA - Lawn Road Housing - Buff Brick with metal fin balustrade as proposed to Block B



White brick for detailing (string courses and banding) to Block A & B



Green glazed brick for lower storeys of block A and entrance areas to Block C



Natural slate as proposed to mansard roof of Block B facing Collins Street



Haworth Tompkins - Silchester Housing - Buff Brick with detailing as utilised to Block B