

8.0 Block A - Influences & Bay Study



Precedent Adolf Loos - Vienna Bank showing plinth and civic frontage. Rhomboid bronze coloured metal cladding as proposed to top storey and glazed green brick as proposed to the plinth

Local details from top to bottom: Signage and banding on The Railway public house, cornicing and window details on Blackheath listed station building



BLOCK A - NORTH ELEVATION



BLOCK A - EAST ELEVATION

8.1 Block A - Elevations



BLOCK A - WEST ELEVATION



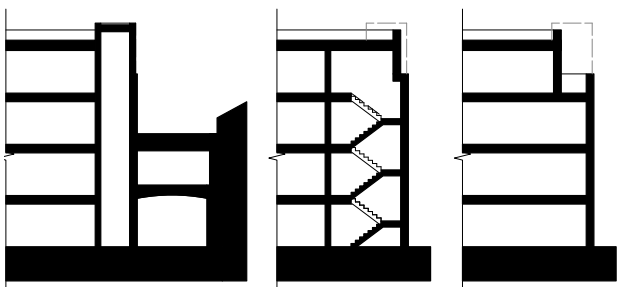
BLOCK A - SOUTH ELEVATION



BLOCK A - EAST ELEVATION

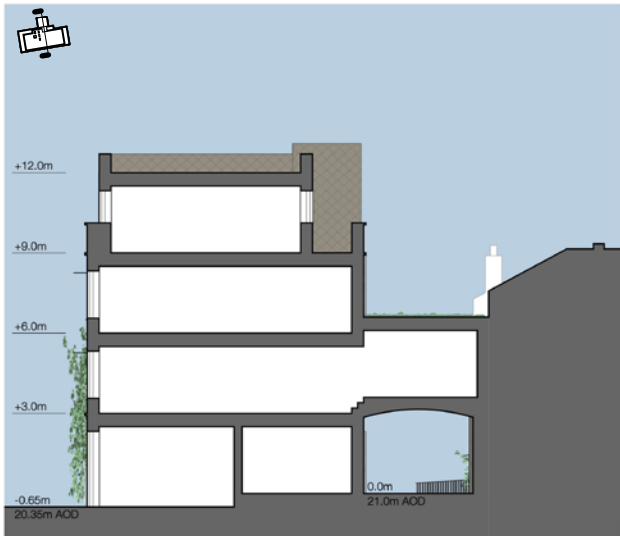


BLOCK A - NORTH ELEVATION



Through Lift Shaft Through Stair Through Flat

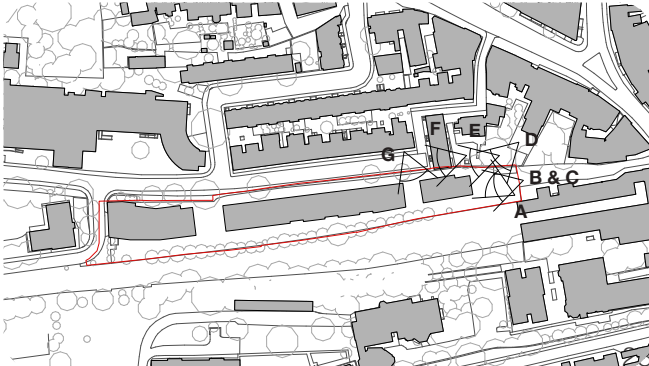
Above: Block A section studies (not to scale) illustrating set backs to the roof storey of the north elevation minimising bulk and mass facing the nexus at Collins St.



BLOCK A - SECTION

Blackheath Station Car Park - DAS

8.2 Block A Market Building Proposed CGIs





EXISTING ELEVATIONS - COLLINS STREET
SCALE 1:50 @ A1 / 1:100 @ A3

Existing elevation studies of Collins Street



PROPOSED BLOCK B FACADE - FACING COLLINS STREET
SCALE 1:50 @ A1 / 1:100 @ A3

Proposed elevation facing Collins Street and Southvale Road showing book-end unit to west of terrace



Precedent image: Conduit Mews showing coloured fenestration and doors offering variety yet an architectural consistency



Precedent image of Regency balcony



Precedent images showing successful vibrant and active street frontages with homework units



Local details from Tranquil Vale: Gable end unit looking over street (top), work unit akin to that proposed to the mews



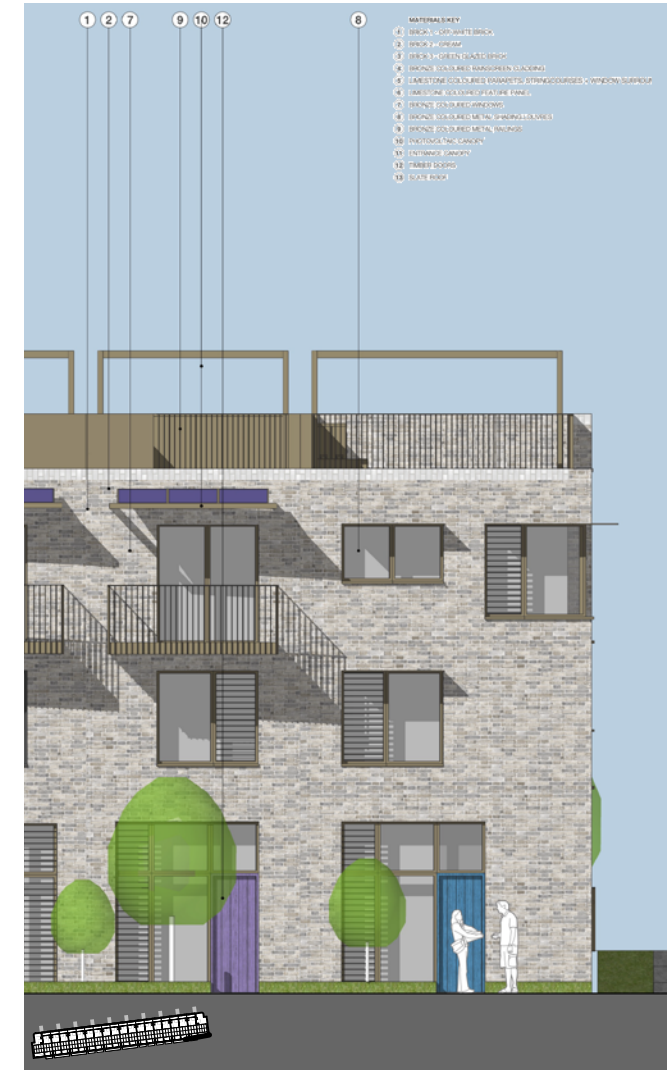
9.1 Block B - Local Context & Bay Studies



Local context, photos of Collins Street that has informed architectural approach, details and materiality: Paired front doors, brick banding, slate roof, modest front gardens and railings, defined party walls, level changes, 6-7 Collins Street framing view down street, slate roof informing choice of material for proposed mansard roof



BLOCK B - NORTH ELEVATION



BLOCK B - SOUTH ELEVATION

Blackheath Station Car Park - DAS

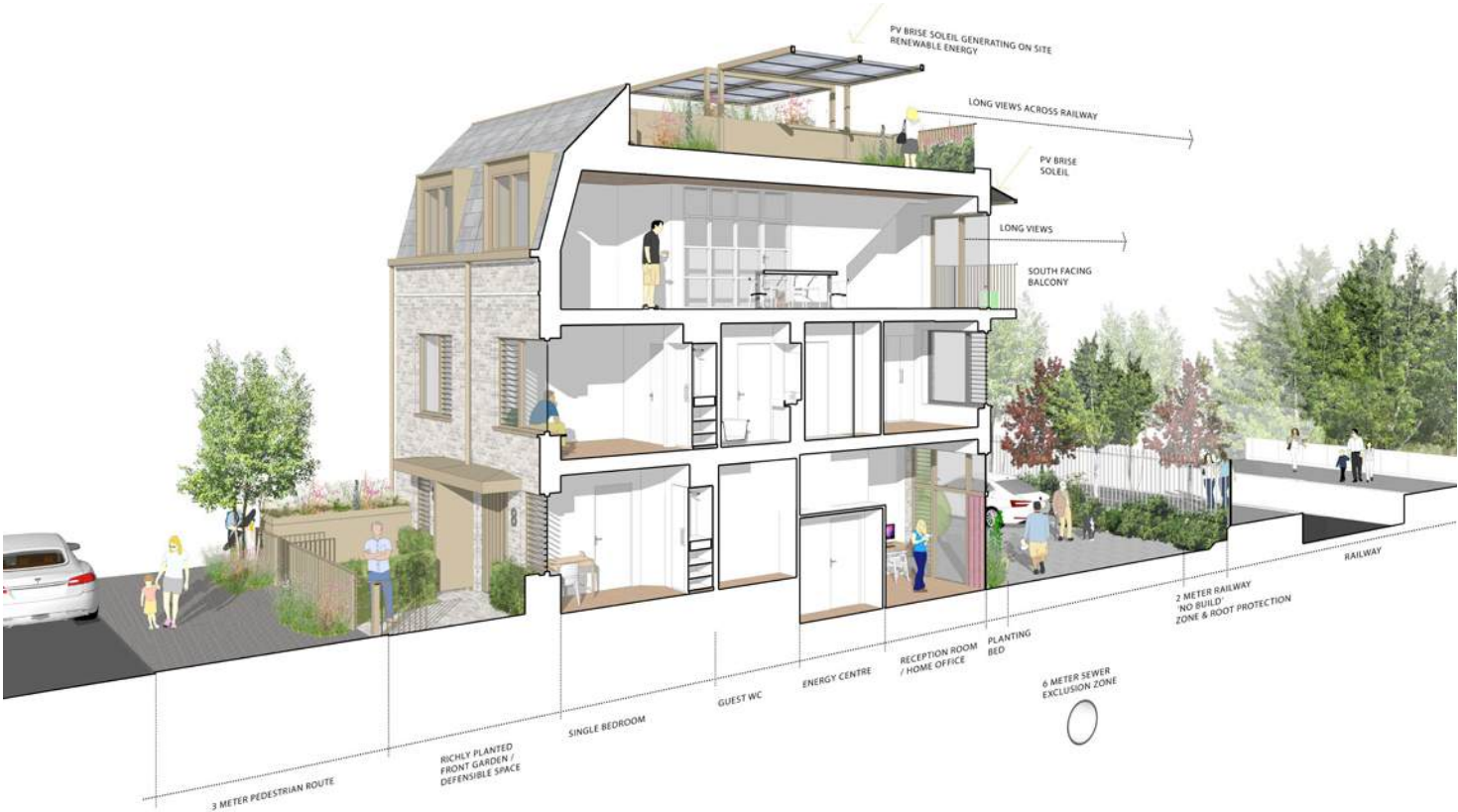
9.2 Block B - Sectional Perspective & Street Elevation



Sectional Perspective from Pre-App 03



Sectional Perspective from Pre-App 04



Sectional Perspective as proposed



STREET ELEVATION - NORTH