



*CUSTOM*  
**Windscreen**  
**SportScreen**  
**Digital Printing**







## Why Douglas Windscreens?

### Quality

As the manufacturer, Douglas's attention to detail guarantees consistent craftsmanship and design. Our quality fabrication is unsurpassed in the industry.

### Selection

Douglas® carries a full line of premium windscreen fabrics in polypropylene and vinyl coated polyester to meet your needs. Choose from a wide range of styles and colors.

### Service

Dependable customer service and fast lead times will get your job completed on time.



### Customization

Our Windscreens are custom made to your specifications and of course Douglas's meticulous reputation guarantees superior workmanship for a reliable finished product.



## Digitally Printed SportScreens

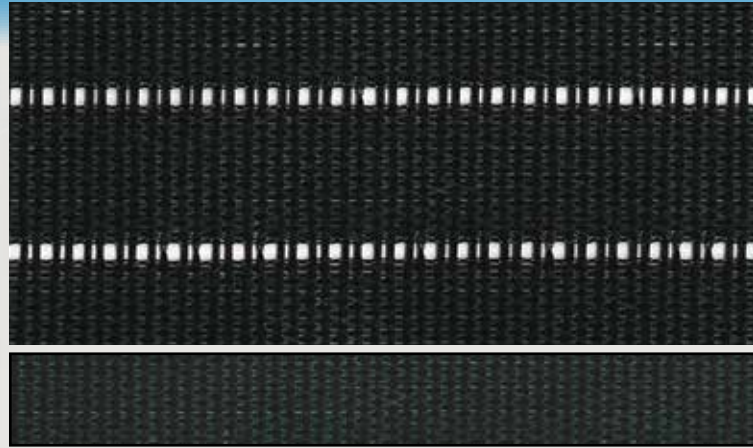
Customize VCP windscreen with a school name, logo, mascot or advertisement. Windscreen is digitally printed with our high-quality UV digital printing process. Our elite printing method allows us to print directly on our material so there's no white back side like other digital printing companies. Your printing and logos become part of the material. Your investment will not crack, peel or tear like vinyl decals. Our digital printing allows for more detailed multi-color capabilities and has a quick turnaround and greater accuracy.





# Douglas® Custom Windscreens

## Polypropylene



For unsurpassed quality and durability, all Douglas® screens are made from the best UV and weather resistant materials. Strength is maximized with their unique extra-strong reinforced hems –the strongest in the industry. The full-line of Windscreens offered by Douglas® ensures you can find the best material for any recreational or industrial application. Douglas® provides great service and expertise as well as superior fabrication and attention to detail.



## PolyPro™ Plus Premium

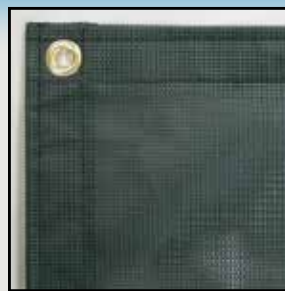
This 100% Polypropylene material is Douglas's® most popular windscreen. Choose from OMP (Open Mesh) or CMP (Closed Mesh) fabric. This low-maintenance material offers classic good looks and highly durable performance. Polypropylene material is heat-set so your screens will never shrink or change shape. Weather and UV protection is extruded into every fiber of Douglas® Poly-Pro Plus Premium Windscreen for maximum performance and long life.

<b>Fabric:</b>	100% polypropylene; OMP: Open Mesh - 28 x 14 leno weave CMP: Closed Mesh - 30 x 16 leno weave
<b>Windbreak:</b>	Open - 87% Closed - 95%
<b>Weight per square yard:</b>	Open - 7 oz. Closed - 8 oz.
<b>Tensile Strength:</b>	Open - 380 x 185 Closed - 450 x 215
<b>Colors:</b>	Dark Green or Black
<b>Warranty:</b>	4-year limited

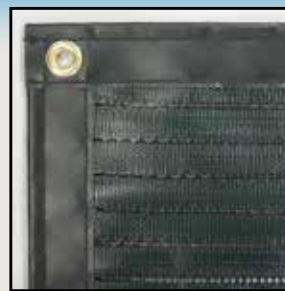
## Windscreen Features

For strength and durability, Douglas® windscreens feature these unmatched industry standards:

- Windscreens are available in standard 6' and 9' heights and in custom heights by quotation
- Any screen width is available; however, 60' is the maximum recommended width per panel
- Standard 3-ply extra-strong hems are constructed with solid vinyl inserts double sewn to 1-1/2" wide (Figure 1) and are standard for Vinyl Coated Polyester (VCP) and VCP Max™
- Heavy-duty 4-Ply hems are constructed with an 18 oz vinyl overlay and #2 brass grommets spaced every 12" (Figure 2) and are standard for Poly-Pro Plus Premium
- All hems include #2 brass grommets spaced every 18" top and bottom and every 12" on sides
- All 9' screens include a Center Tab with grommets for anti-billowing installation (Figure 3)
- Optionally, 9' screens may substitute a Center Reinforcement Tape (CRT) with grommets that can be laced to the fence (Figure 4)



(Figure 1) VCP with 3-Ply Hems



(Figure 2) OMP with 4-Ply Hems



(Figure 3) VCP with Center Tab with Grommets



(Figure 4) OMP with (CRT) Center Reinforcement Tape

## Optional Air Vents



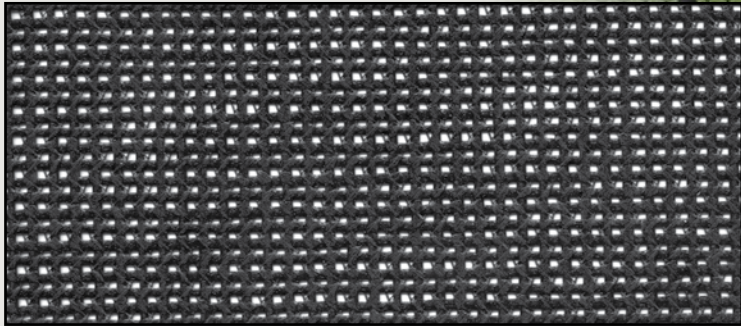
**AV** (Item # 21001)  
Die-cut and heat sealed air vents are available for vinyl-coated polyester screens only. Recommended for all VCP screens.



**AVR** (Item # 21002)  
Reinforced air vents, installed at 10' intervals, are optional on all windscreens and are recommended for closed mesh screens and 9' high screens.



## Vinyl Coated Polyester



### VCP

This versatile and attractive windscreen fabric is durable and boasts great weather resistance. VCP screens are available in a variety of colors and custom digital printing and logos can be printed directly on the material.

**Fabric:** 50% vinyl, 50% polyester;  
Open Mesh - 9 x 12 weave

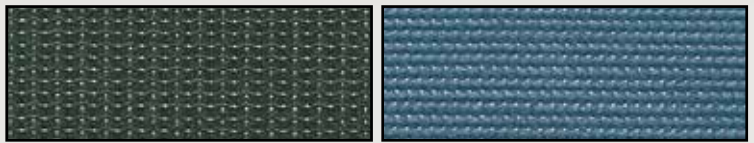
**Windbreak:** Open - 80%

**Weight per square yard:** Open - 8 oz.

**Tensile Strength:** Open - 230 x 200

**Colors:** Dark Green or Black  
**Other Colors:** Yellow, White, Royal Blue, Red, Purple, Orange, Navy Blue, Burgundy, Gray, Brown, Bright Green and Open Tournament Blue

**Warranty:** 3-year limited



### VCP Max™

VCP Max™ goes one step further by offering maximum tensile strength and visual blockage. At 89% windbreak, VCP Max™ allows more airflow than closed mesh screens, but provides a better visual background than open mesh screens.

**Fabric:** 16 x 17 weave

**Windbreak:** 89%

**Weight per square yard:** Open - 9 oz.

**Tensile Strength:** 395 x 401

**Colors:** Dark Green, Black or Open Tournament Blue

**Warranty:** 4-year limited

## Custom Bleacher Enclosures

- Custom made from 18 oz heavy-duty solid vinyl coated windscreen mesh
- Perimeter reinforced hems with brass grommets
- Increase safety by preventing unwanted traffic and accidents from occurring underneath bleachers
- Improve the appearance of your bleachers and entire facility
- Digitally printed logos and lettering available to promote the school, facility or sponsors





# Privacy Screen

**Purchase by the Roll -- In Stock -- Same day shipment is available!**

**An inexpensive solution for:** Athletic fields, dugouts, bleachers, parks and recreation, construction sites/companies or any other location where shade or privacy is desired.

Lightweight material is tear resistant and will not unravel. Privacy Screen is UV stabilized –will not fade or deteriorate from natural elements. Material is also resistant to mold and mildew. Privacy Screen is purchased by the roll and can be cut-on-site. Rolls feature reinforced top and bottom sides for attachment to any fence with tie-raps. Rolls are also available with reinforced hems and grommets around the perimeter -contact us for pricing.

### Unfinished Rolls -Cut on site

44" x 150', for 4' fence (Item # 36924)

68" x 150', for 6' fence (Item # 36928)

92" x 150', for 8' fence (Item # 36932)

### Finished Panels

Panels are finished with perimeter hems and grommets for extra reinforcement.

68" x 50' Panels

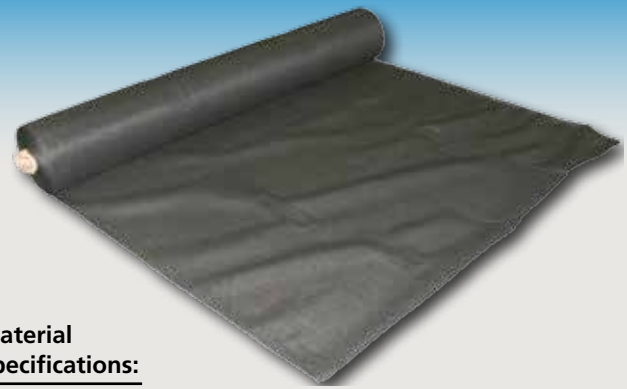
Green (Item # 26928G)

Black (Item # 26928B)

92" x 50' Panels

Green (Item # 26932G)

Black (Item # 26932B)



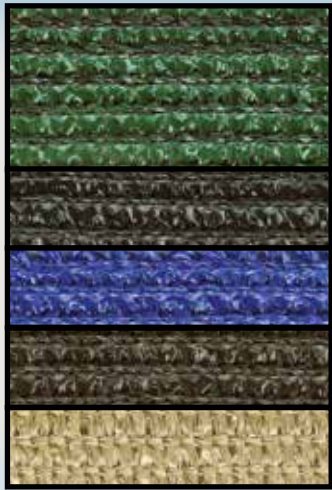
### Material Specifications:

**Construction:** 85 – 90% Knit Raschel

**Fiber Content:** 100% High Density Polyethylene

**Available Colors:** Dark Green, Black, Blue, Brown and Beige

**Warranty:** 4-Year Limited



# Weathascreen

6'H x 120'L, Green (WS-72) (Item # 30006)  
6'H x 120'L, Black (WS-72) (Item # 30006B)

What makes Weathascreen so unique is its locked-spring knitted construction - IT'S NOT WOVEN! Weathascreen fabric is formulated of double-thick Monolon that's fray resistant. It distributes stress loads evenly, and is lightweight for easy storage and transportation.

- High tensile strength (15 times the tear resistance of woven cloth, won't unravel)
- Superior ultra-violet stability
- Resistant to abrasion, mildew, and chemicals
- Easy installation -No grommets necessary
- Reduces visual intrusion & helps eliminate glare
- Available in Dark Green or Black
- Purchase by the roll, 120' length



# Installation Accessories

TR-50 (Item # 31650) 7" Tie wrap  
50 lb. break strength with metal insert

TR-50XL (Item # 31651) 14-1/2" Tie wrap  
50 lb. break strength with plastic insert

TR-50P (Item # 31656) 7" Tie wrap  
50 lb. break strength with plastic insert

TR-120 (Item # 31654) 8.5" Tie wrap  
120 lb. break strength with metal insert

TR-120XL (Item # 31655) Extra long 14" Tie wrap  
120 lb. break strength with plastic insert

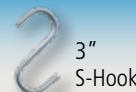
TR120P (Item # 31657) Tie wrap 8",  
120 lb. break strength with plastic insert

SH-3 (Item # 31663)  
3" galvanized "S" hooks

BNC (Item # 31600)  
Braided lacing cord 600' reels

BLR (Item # 31601M) Braided lacing rope black  
poly 3/16" 1000' reels 550 lb. break strength

C-3P (Item # 32675) 3" plastic C-snap



3" S-Hook

Plastic C-Snap



Braided Lacing Cord







**douglas<sup>®</sup>**

 Proud USA Manufacturer -It Matters!

**1-800-553-8907**

**[www.douglas-sports.com](http://www.douglas-sports.com)**