



## **Boomerang Services & Supply Inc.**

14090 FM 2920, Suite G-354 – Tomball, Texas 77377

T: 281-871-8477- F: 832-201-0455

**Alfonso Meneses**

**US/Latin America Sales Director**

**C: + 1 832-518-6249 (USA)**

**C: +52 1 833 474 5491 (Mexico)**

**Alfonso.Meneses@boomerangssinc.com**



Boomerang is becoming a leader in specialty products, offering the best selection in Electrical cable, Terminators, Power & Control single & Multi pin connectors, Commercial Industrial & Hazardous Area lighting fixtures, transit systems, breakers, Enclosures in fiberglass & steel, Distribution panels, Transformers, Generators, pumps, Push button stations, Breakers, Fuses, Conduit & fittings and more.

Our experience in the electrical market and our many alliances with a large data base of vendors allows us to find the products you need at competitive prices and fast lead times. We also specialize in hard to find products.

**We Deliver...**

Personal Service & Quality Products  
at Competitive Prices

Boomerang also offers a wide variety of handling tools and spare parts, both new and refurbished.



Drilling Equipment, Elevators, Kelly Spinner Drill Pipe & Replacement Parts, Power Tong / Rotary Tong, Slips, Safety Clamps, Brake Lining (Non Asbestos) Hinge Casing Spiders, HYC Elevators W/ 7-5/8" - 4-1/2" Slip Assy., Miscellaneous parts for the Oilfield Industry such as: Mud Pump Parts, BOP Parts, Hammer Unions, Ring Gaskets, Casing Scrapers, Diesel Engine Parts, Foster Parts, Hoses, Brake Blocks, Drill Bits and Many more



Industrial Cables such as: Welding Cable, SOOW, Type W, Type G, GGC, DLO, Medium Voltage Cable to 35KV, THW, THWN, XHHW, VNTC, XPTC, Instrumentation & Control Cable Type TC IEEE45 Flexible Oil Rig and Commercial Marine Cables and IEC rated European standard Cables



Hazardous Locations Cable Glands, MultiPin Connectors, Cable & Pipe Transit Systems, Custom Manufactured Cable Tray in Galvanized, Stainless Steel, and Fiberglass for Industrial & Marine Applications. Copper Compression Lugs, Custom Metallic & Fiberglass Enclosures, Distribution Panels, Transformers and many other electrical products.

We are your competitive source for products such as: Appleton, Crouse Hinds, MEDC, Allen Bradley, Burndy, Thomas & Betts, Roxtec, CMP, Hawke, MGM Transformer, Stahl, Tranberg, Bartec, Saginaw, CEAG, Killark, Hayata, GE, Cutler, Square-D, TMC Cable, Nexans Cable, General Cable, Lake Cable, PWC, and many more.

## Marine Shipboard Cables for Offshore Platforms and Ships in US & IEC Standards

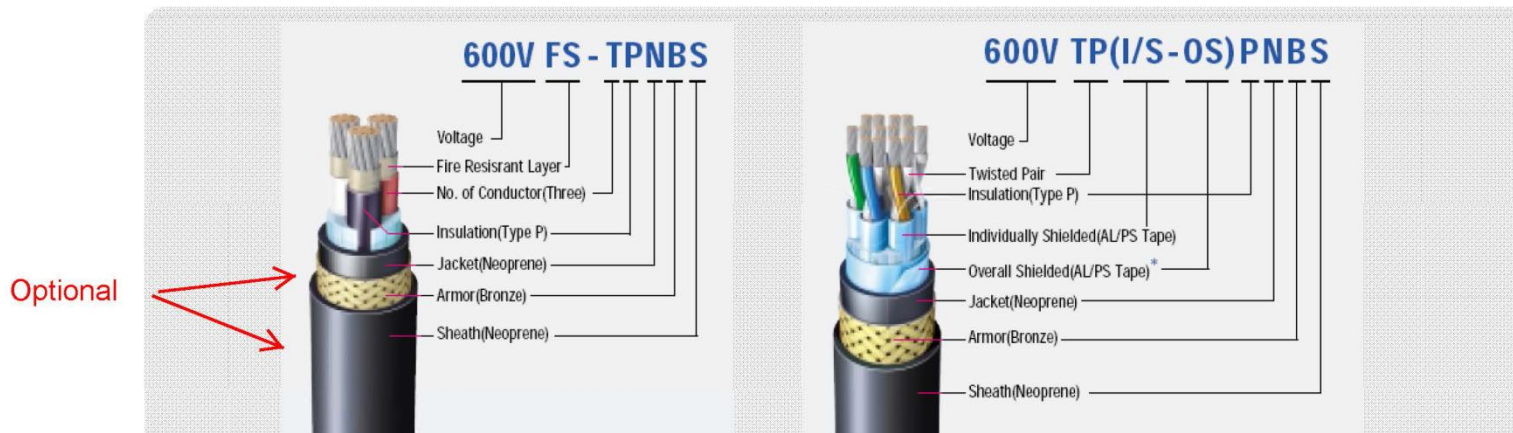
### Chapter 02 Shipboard, Offshore Cable and Military Cable Lineup

#### 2. ENERFLEX® – IEEE1580 TYPE P

(AWG-MCM) American Wire Guage Cable Sizes #20AWG - 1111MCM

Application Standard	Features	Classifications
IEEE 1580, IEEE 45	- Use in Commercial Marine Application, MODU's and Platform	UL
UL 1309, UL 1072		ETL
ICEA S-68-516	- Excellent flame retardant / fire resistant	ABS
IEC 60332-3 CAT.A	- Resistant to oil, mud, abrasion,	LR
CSA C 22.2 NO.38 (at -40C)	petrochemical fluid, moisture and sunlight	DNV
IEC 60331 (Fire resistant type only) ***Option	- Low smoke & Halogen free *** Optional	USCG

#### \* General Introduction



## Marine Shipboard Cables for Offshore Platforms and Ships in US & IEC Standards

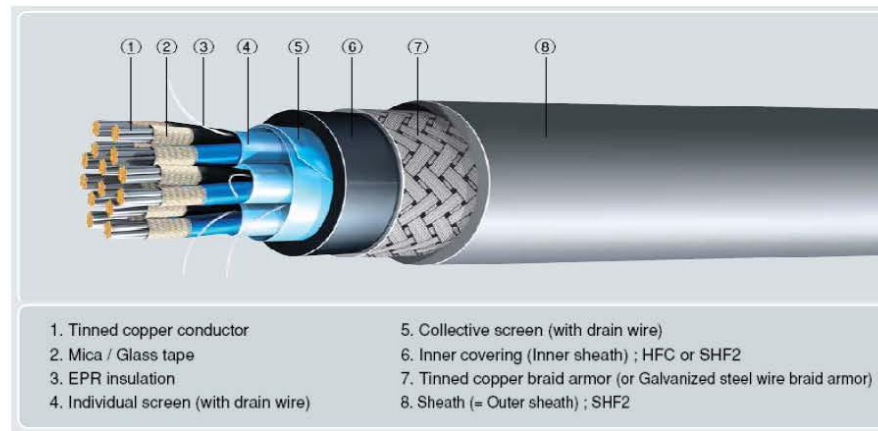
### Chapter 02 Shipboard, Offshore Cable and Military Cable Lineup

#### 1. NEK606 2004 Std.

**\*\*Metric Sizes (1.0mm<sup>2</sup> - 600mm<sup>2</sup> Cable Conductors)**

Application Standards	Features	Classification
NEK606 2004	- Use in Commercial Marine Application, MODU's and Platform	DNV
IEC 60092-350,353,354,376		LRS
IEC 60092-351, 359	- Excellent flame retardant / fire resistant	BV
IEC 60332-3 CAT.A & IEC 60332-1	- Resistant to oil, mud, abrasion, petrochemical fluid, moisture and sunlight	ABS
IEC 60331 (Fire resistant type only)		
CSA C 22.2 NO 38 (at -40C)	- Low smoke & Halogen free	
IEC 60754-1, 2 & IEC 61034		

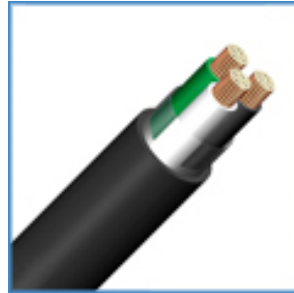
#### \* General Introduction



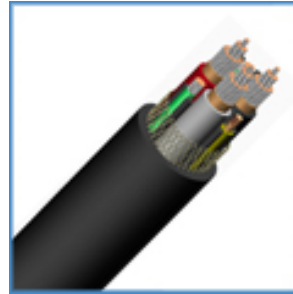
Low Voltage & Medium Voltage Cables and Armored Cables



2KV Type DLO Cable



600V Type SOOW-A  
Portable Cord



TYPE W, G-GC , SHD-GC  
3/c 600 to 15KV



Single Core or 3Core  
5-35KV Medium Voltage Cable



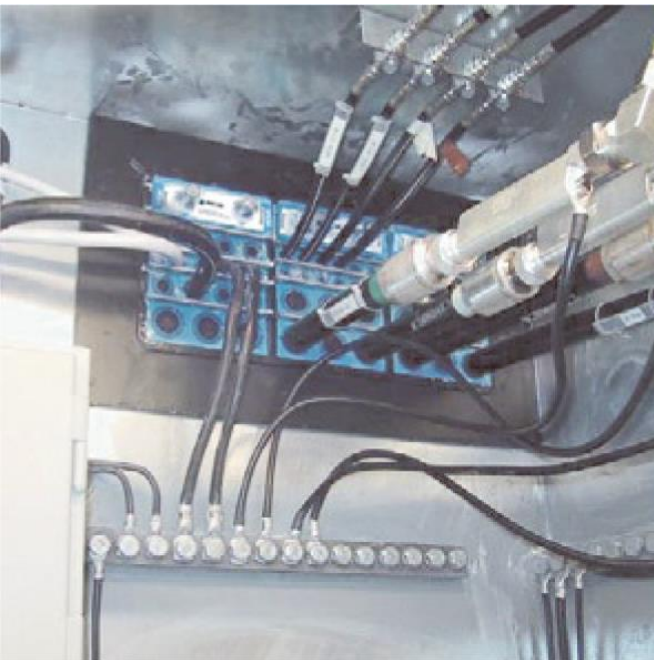
Submersible Pump Flat Cable



Armored Cable for  
Hazardous Locations

Copper and Fiber Optic  
Communication Cables  
for the Offshore and Marine  
Shipboard Market

## Flame Proof Cable & Pipe transit Systems

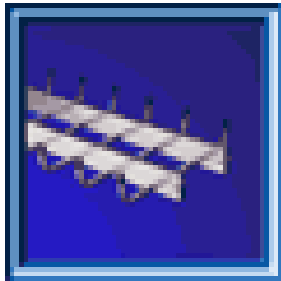


### enduro

FRP Solutions for Cable Management Systems

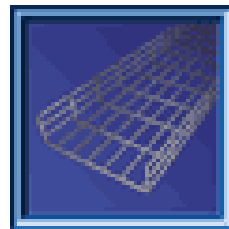
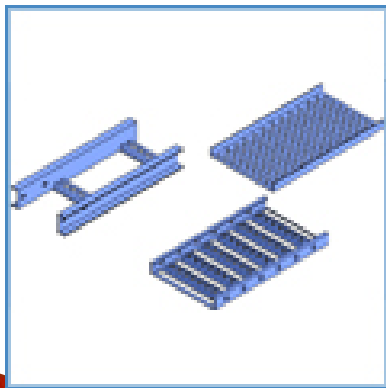


### COOPER B-Line



### CHANNEL-TRACK & TUBE-WAY INDUSTRIES, INC.

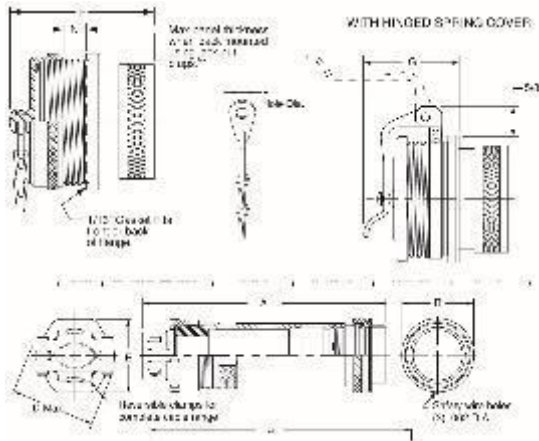
UL CSA NEMA & Marine  
Rated Cable Tray Systems ,  
UL CSA NEMA Wire  
Mesh/Basket , HDG, 316 SS,  
Cable Tray Systems, also  
available in fiber glass and  
UL CSA NEMA Cable Bus  
Power Distribution Systems







**Instrumentation Power & Control Connectors for Industrial & Hazardous Locations and available in various Configurations From 2 contacts to 91 contacts.**



## Amphenol STAR-LINE® Series

“ZP/ZR” Heavy duty environmentally sealed and EX Hazardous plugs and receptacles, have been successfully used in all types of Industrial, Aerospace, Land & Offshore Drilling applications. These compact environmental connectors have provided outstanding performance in complex ground support cable networks, automatic and process control systems and instrumentation systems.



**Cable Gland Connectors for Un-Armored & Armored Cables for  
Flameproof and Explosion proof locations. UL & Eexd Rated.**



A2F



Armadura Universal



Class 1 Div 2



C2KX



Class 1 Div 1

Weatherproof & Explosion Proof Products.  
Controllers, Pushbuttons, Lighting, Connectors, Enclosures etc.



Boomerang Services & Supply is the right source  
for your preferred manufactures



**KILLARK**



**Appleton**



**EMERSON**

**Rockwell  
Automation**

**Allen-Bradley**

**Crouse-Hinds**  
by **EATON**



## Transformers for various applications



**Autotransformers**



**Buck Boost Transformers**



**Machine Tool Industrial Control  
Transformers**



**Energy Efficient Drive  
Isolation Transformers**



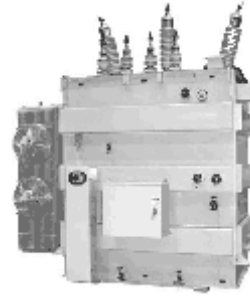
**Dry-Type Power Transformers**



**Motor Starting Autotransformers**



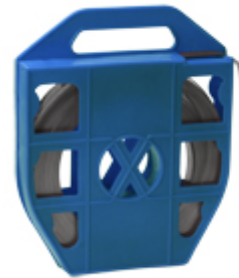
**Energy Efficient Harmonic  
Mitigating Transformers**



**Oil Type Power Transformers in low and Medium Voltage**



Cable Ties in Nylon and Stainless Steel and banding with and without PVC Coating.





Enclosures available in Fiberglass, Carbon Steel, HDGalv., Stainless Steel for various applications. “NEMA” and “IEC EEXD” rated.



**Industrial Lighting, Marine & Oilfield Lighting,  
Conventional & LED Lighting**



**Severe  
Environment  
Lighting**

**Explosion Proof  
Lighting**

**Hazardous  
Location  
Lighting**



**Marine Rated  
Lighting**

**Wet Location  
Lighting**

**Damp Location  
Lighting**



## Outdoor Lighting

Cost effective outdoor illuminating designs, LED outdoor lighting is meant to last with dependable, ambient illumination. Forget about maintenance and welcome energy efficiency. Enjoy the outdoors with peace of mind. Outdoor luminaires for roadway lighting, area lighting, flood lighting, canopy lighting and other commercial outdoor lighting applications. Maximize energy savings and cut maintenance costs with Boomerang's Outdoor LED lighting fixtures, these outdoor light fixtures also help provide added visibility and security for numerous applications.

Area Lights  
from 5000 to 37400 lumens



Wallpacks  
from 3200 to 15500 lumens



Canopy Lights  
from 5300 to 32000 lumens



Flood Lights  
from 1900 to 63000 lumens



Please contact us for more information  
or costing.

## Indoor Lighting

Boomerang offers affordable interior LED lights and other indoor lighting solutions for a variety of commercial and industrial applications. From upgrading office lighting to adding extra light to a warehouse, find affordable fixtures that are durable and built to last. LED luminaires redefine the art of indoor lighting, providing the styling, efficiency and performance you desire for retail lighting, office lighting and hospitality lighting. For high bay and low bay industrial lighting and warehouse lighting, choose Boomerang Services & Supply.

High Bay Lights  
from 13000 to 69000 lumens



Troffers & Panels  
from 3500 to 5900 lumens



Canopy Lights  
from 5300 to 13300 lumens



Please contact us for more information  
or costing.





Partex Marking Systems: Printers, Labels, Heat Shrink, Terminal, Cable Ties in Nylon and Stainless Steel and coated, Tooling and wire & cable protection.



## Safety and Protection

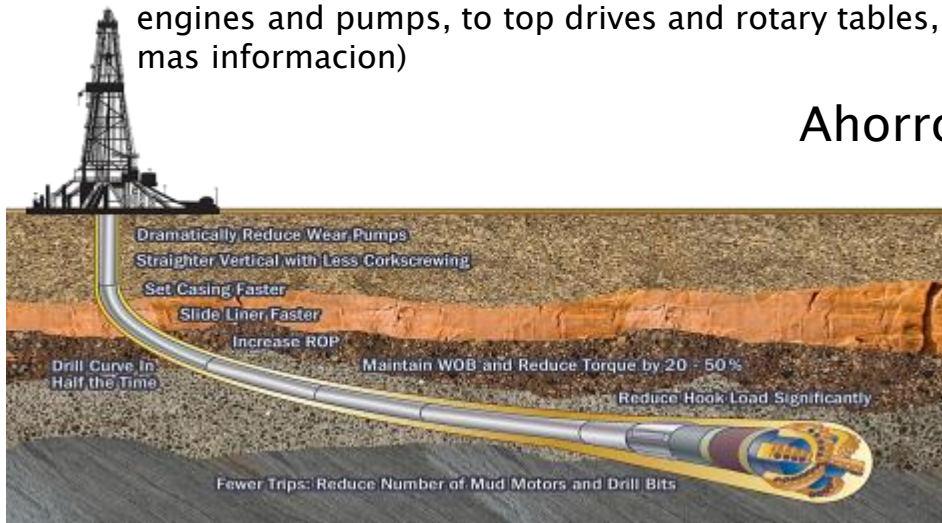




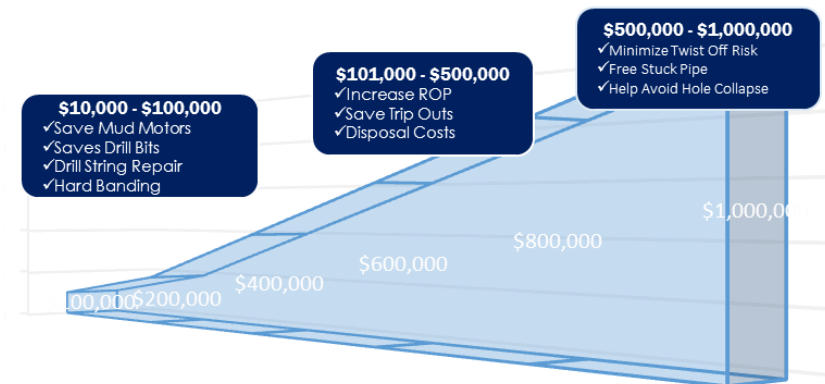
## Pro1 One Energy

ProOne Energy has developed proprietary breakthrough lubrication technology that is 50 times more powerful than typical lubricants. They are designed to reduce heat and friction under the most extreme conditions.

Powered by XPL+® Technology, ProOne has created an industrial line of core lubricants and drilling fluids designed to protect rig equipment and enhance drilling performance. From engines and pumps, to top drives and rotary tables, ProOne has you covered. (hablemos para mas informacion)



## Ahorros Tipicos







## Heavy Duty Flooring for Living Quarters in Rough Environments

Creative Solutions. Proven Performance.

Designed to provide beautiful, easy-to-clean and long-lasting floors,

ColorArt™ homogeneous sheet flooring offers a spectrum of colors.

**Through a network of built alliances Boomerang has the capability for custom made projects. We work closely with the client to direct and propose the best possible solution to many process, production and distribution projects.**

**Projects such as the ones shown below.**





Boomerang is the right source for your electrical & mechanical requirements.

Give us an opportunity to quote your next project. Our clients are important to us we deliver personal service and quality products at competitive prices.

Thank you,