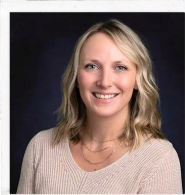




www.rochellefoundation.org

350 May Mart Drive PO Box 74 Rochelle IL 61068

follow us on Facebook and Instagram

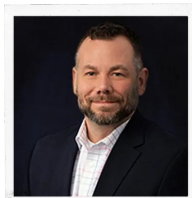


Stephanie Messer
Administrative
Assistant

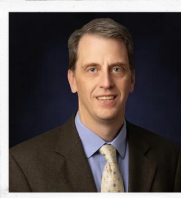


Emily Anaya
Executive Director

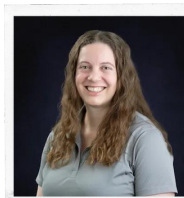
2025 Board of Directors



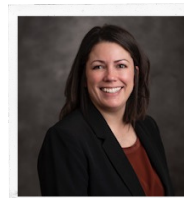
Jeff Fiegenschuh
President



Doug Forsberg
Vice President



Ellen Becker
Treasurer



Kathleen Isley
Secretary



Terry Dickow



Trena Thompson



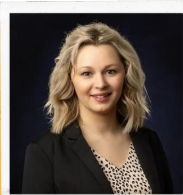
Tony Doyle



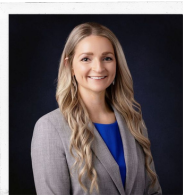
Debbie Howard



Doug Jarvis



Ashley Jackson



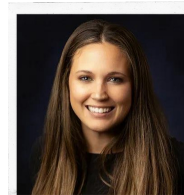
Kim Ewald



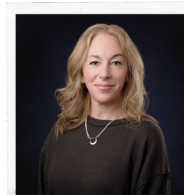
Yazmin Nambo



Kwami Gati



Kara Kettleson



Dani Foster

Here's How We're Growing

From the Heart Event
Check Presentations
Meet our new Board Members
Granting Futures Event Recap

Fund Spotlight/Good Neighbor
Non-Profit Spotlight
Mission/Vision/Purpose
January-April Donor List



Emily Anaya

As we reflect on an exciting year of philanthropy, I'm thrilled to invite you to celebrate the achievements and meaningful progress made possible by the Rochelle Area Community Foundation (RACF). This past year has been nothing short of extraordinary—laying the foundation for a major milestone in 2025: our 20th anniversary!

At the heart of our mission is a steadfast commitment to fostering growth, resilience, and positive change across our community. With your support, we've continued to turn possibility into reality for countless nonprofits and organizations.

We're also excited to share highlights from the annual From The Heart Gala, celebrate recent check presentations, introduce our newest board members, and reflect on the inspiring moments from our Granting Futures event.

Your generosity fuels everything we do—and your dedication continues to inspire every act of good taking place in our region.

As we step into our 20th year of impact, may this newsletter deepen your connection to RACF's work and ignite your passion for the transformative power of philanthropy. Together, we're building a stronger, brighter future for Rochelle and beyond.



Giving Made Easy

Rochelle Area Community Foundation (RACF) makes it easy to give. Many donors give generously through monthly donations to RACF. There are two ways to set up a recurring gift.

Give through our website

rochellefoundation.org

- Click "Donate"
- Choose a Fund you want to support
- Click "Donate" under the appropriate fund
- Click "Make this a monthly donation"
- Fill out the secure information via PayPal
- Now your gift will be successfully sent each month to that fund

Give through Online Banking

- Go online to your bank account
- Login to your account
- Set up "Bill Pay"
- Add Rochelle Area Community Foundation"
PO Box 74
Rochelle, IL 61068
- If an account number is required, please contact our office at 815-561-3600 or email director@rochellefoundation.org.
- Set up the monthly donation
- If you have a specific fund you wanted to support, please contact RACF prior to your first donation to establish the fund recipient.
- All gifts without an established fund recipient will go to the RACF Endowment Fund.

Should you have any questions, would like to set up your own fund, or have difficulties with the process please contact us and we will be happy to assist you in any way.

Thank you for being a supporter who truly cares for your community!



2025 BOARD OF DIRECTORS

PRESIDENT-Jeff Fiegenschuh
VICE PRESIDENT-Doug Forsberg
TREASURER-Ellen Becker
SECRETARY-Kathleen Isley

Terry Dickow
Tony Doyle
Kim Ewald
Dani Foster
Kwami Gati
Debbie Howard
Ashley Jackson
Doug Jarvis
Kara Kettleson
Yazmin Nambo
Trena Thompson

Emily Anaya-Executive Director
Stepanie Messer-Administrative Assistant, Editor

Visit our website to learn more about our members. Do you have an interest in joining our board? We have several different committees where you could best use your skills and talents to make a difference in your community. Help us know more about you by filling out a questioner on our website to see if this could be a good fit for you.

VISIT OUR WEBSITE FOR MORE INFO ABOUT THE FOUNDATION



From the HEART



The most recent From the Heart event took place in February, and we are deeply grateful for the lasting impact it has had—not only on RACF but also on many other nonprofit organizations over the years. This year, each of the nine participating groups received checks totaling \$10,000. From the Heart has been a cornerstone of our community for many years, and it will always be remembered for its generosity and spirit of giving.





Liquor N Wine

Liquor N' Wine made their third annual contribution to RACF on April 3rd. This gift is part of a 10 year commitment to give a total of \$25,000.



Jeff Perry Chevrolet

RACF was honored to be a recipient of Jeff Perry's December Sales Event. A check for \$1,550 was presented to RACF from a portion of all sales that month.



Floyd J. Tilton VFW Post #3878

UPCOMING

Events

Book signing with Author John Bearrows-June 25th 5-7pm at Luna

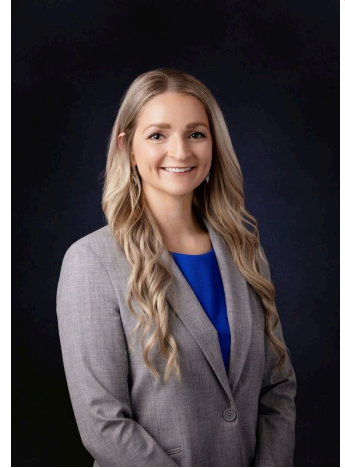
Ribbon Cutting Event at RACF-July 16th 11:30-1pm-350 May Mart Drive-Rochelle-Ralphs BBQ

Golf Play Day-August 29th- Fairways Golf Course-Shotgun start at 10am

Nonprofit Partner Meeting-August 21th (10am) at First Presbyterian Church

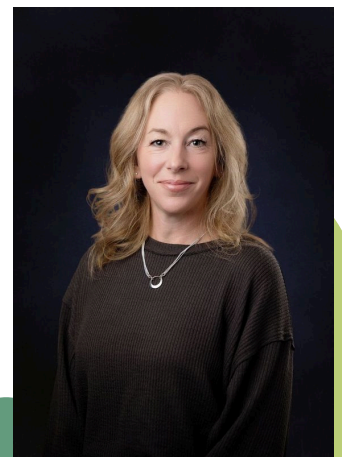
MEET OUR NEW BOARD MEMBERS

Kim Ewald is a Commercial & Agricultural Loan Officer with Central Bank IL. She attended Kishwaukee College to Obtain her general education credits and then went on to receive her bachelor's degree from the University of Wisconsin- Platteville in 2017. She is dedicated to serving the community, and is a strong advocate for Agriculture. Kim is an active member of the Lee County Farm Bureau Young Leaders, the Lion's Club, and looks forward to serving as a Board Member of the RACF. Kim enjoys spending time outdoors, and quality time with family and friends.



Doug lives with his wife Kelly in rural Ashton. He has been involved with the family farming and trucking operation for over 40 years. He attended Ashton Schools, Sauk Valley Community College and Western Illinois University. Doug has served on the Ashton School Board and the Bradford Township Board. He has social and business ties to the Rochelle area. When not attending one of his grandchildren's events, he can be found playing a round of golf at Fairways or playing a game of pickleball at the REC.

Dani Foster was born and raised in the Rochelle area and returned to the area after earning her Bachelor's Degree in Nursing from Marquette University in 2000. She has worked at Rochelle Community Hospital in the Emergency Department since 2001. She currently lives just outside Rochelle with her husband, Justin, and their son. She has two adult daughters that graduated from RTHS and are now living and working in Madison, WI and Clearwater, FL. In her free time, she enjoys hiking with her dogs and spending time with friends and family. She is proud to live and work in the community she grew up in.





PROUD TO SUPPORT ROCHELLE LITTLE LEAGUE

We are honored this year to have our sign displayed at the Rochelle Little League fields to show our ongoing commitment to local youth athletes. We believe it takes an entire community to support growth and it starts with encouraging the next generation to play, learn and lead through sports. Thank you to everyone who helps make youth athletics possible in our community.



GOOD NEIGHBORS

January:

Holly Kubale, Jim Withers,
Leslie Myers, Krista Stewart

February:

Bill Haan, Amy Hayden, Josh
Kulwicki, Kathy Olson

March:

Tony Doyle, Teri Johnson,
Laurie Johanning, Doug Jarvis,
Amber Putzstuck

April:

Joe Meadows, Johnny
Gonzales, Kathy Pfeiffer, Noah
Carmichael

Spotlights

FUND SPOTLIGHT

DANIEL AND STEPHANIE WILLIAMS FUND FOR THE ARTS



In August 2018, the **Daniel and Stephanie Williams Fund for the Arts** was established to celebrate the 10th Anniversary of Lifeworks Photography Studio. Danny and Steph wanted to give back to the community that has supported them, their business, and their family over the years. Their goal was to bring diverse art installations to Rochelle, including 3-D sculptures and large murals.

To accelerate the growth of the fund, Danny and Steph host an annual art show open to the public. Alongside Danny's artwork, local artists generously donate pieces for auction.

All proceeds from this event benefit their Fund for the Arts.

Their mission is to encourage all local artists to apply for funding to create artwork that enhances the beauty of our community. A donation to this or any Fund here at RACF are greatly appreciated. Thank you for your continued support!



MISSION

To offer those with a philanthropic heart a simple way to make a positive difference.

PURPOSE

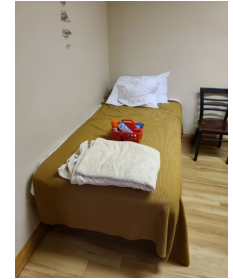
Be a vehicle for philanthropy and empower community nonprofits through donor stewardship.

VISION

A generous, Vibrant, and sustainable community where a helping hand is always within reach.



NON-PROFIT SPOTLIGHT



The Rochelle Rescue Mission is a faith-based homeless shelter, dedicated to providing safe, temporary housing and supportive services to individuals and families experiencing homelessness. They have the capacity to accommodate up to 20 individuals-including separate rooms for men, women and two family units.

The Mission offers a welcoming environment where guests can begin their journey toward stability. During their stay, individuals are provided with a bed, access to shared living areas, kitchen facilities and bathroom amenities.

The Missions staff and volunteers work with each resident, connecting them to essential resources and support systems aimed at fostering self-sufficiency and long-term success.

The Rochelle Rescue Mission plays a vital role in our community by addressing homelessness and helping individuals and families find their way home both physically and spiritually.

The Rochelle Rescue Mission was a 2025 Grant recipient. This Grant is used to support emergency hotel stays in partnership with Ogle County Police, providing safe shelter for those in urgent need. It is also, helping to address critical maintenance and cleaning needs, ensuring the facility remains a welcoming and safe environment for all who come through the doors.

You can learn more about this organization or find out how you can get involved by visiting **rochellerescuemission.org** or you can contact them directly at (815)561-2731. They are located at 805 W Lincoln Ave, Rochelle and can be found on Facebook.

We are *Growing* because of you!

**Thank you to our Donors
January 1, 2025-April 30, 2025**

Lloyd Ackland
Justin and Anna Adolph
Nick Anatra
Anonymous
Kristen Barco-Kida
Avis Berg
Diane Berg
Tyler Carls
Eric Cech
Becky Cox
Jacqueline Cruz
Michael Dale
Terry and Jacqueline Dickow
Tony and Krista Doyle
Jeff Fiegenschuh
Robert and Sarah Flanagan
Floyd J. Tilton VFW Post #3878
From the Heart
Jeff and Michele Glen
Christine Hartel

Amy Hayden
Curtis Helgren
Autumn Hernandez
Kathleen Hollonbeck
Kevin and Debbie Howard
Michael Hudetz
Kim and Becky Huntley
Ashley Jackson
Jeff Perry INC.
Bruce Johnson
Doug Kroupa
Liquor 'n' Wine
-Manish Patel
Joseph F Mckinney
Glen Mehrings
Dale Meyers
Kristofer Milos
Jeannette Mingus
Mandi Morris
Yazmin Nambo

Michelle Pease
Kelly Polz
Dwayne Rangel
Nancy Reed
Ed and Ann Rice
Rochelle Rotary Calendar
Andrew Rogde
Donald Romes
David Sawlsville
Phillip and Jennifer Scheck
Jennifer Siebert
Brandon Sveta
Tim and Jennifer Thompson
Blake Toliver
Jason Underwood
Eddie Villalobos
Ryne and Alison Vrana
Wheatland Tube, LLC
Danae White
Brittney Zick