

Stephanie Messer

Administrative  
Assistant



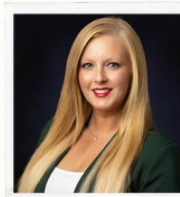
Jeff Fiegenschuh

President



Kathleen Isley

Vice President



Emily Anaya

Executive Director

## 2025 Board of Directors



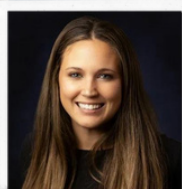
Debbie Howard

Treasurer



Tony Doyle

Secretary



Kara Kettleson



Terry Dickow



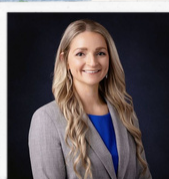
Trena Thompson



Doug Jarvis



Ashley Jackson



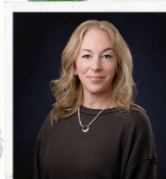
Kim Ewald



Kwami Gati



Yazmin Nambo



Dani Foster

## Here's How We're Growing

RACF Board of Directors  
20 Year Ribbon Cutting Recap  
Non-Profit Spotlight

Fund Spotlight/Good Neighbor  
Mission/Vision/Purpose  
May-Sept Donor List



Emily Anaya

As we reflect on 20 years of philanthropy, this season marks a truly extraordinary moment, laying the foundation for our milestone 20th anniversary in 2025. We celebrated with a special ribbon cutting this summer, surrounded by community members, supporters, and partners who have helped shape our journey. It was a powerful reminder of how far we've come, and how much more we can accomplish together.

At the heart of our mission is a steadfast commitment to fostering growth, resilience, and meaningful change across our region. With your support, we've helped turn possibility into reality for countless nonprofits and community efforts through grants, partnerships, and the everyday impact of generosity.

Your giving fuels everything we do and your dedication continues to inspire the good happening across Rochelle and beyond.

As we step into our 20th year, I invite you to deepen your connection with RACF by supporting the causes that matter most. Whether through endowments, donor-advised funds, or giving to your favorite nonprofits through the Foundation. Every gift makes a difference.

Together, we're not just honoring the past—we're shaping a stronger, brighter future.



### Giving Made Easy

Rochelle Area Community Foundation (RACF) makes it easy to give. Many donors give generously through monthly donations to RACF. There are two ways to set up a recurring gift.

#### Give through our website

[rochellefoundation.org](http://rochellefoundation.org)

- Click "Donate"
- Choose a Fund you want to support
- Click "Donate" under the appropriate fund
- Click "Make this a monthly donation"
- Fill out the secure information via PayPal
- Now your gift will be successfully sent each month to that fund

#### Give through Online Banking

- Go online to your bank account
- Login to your account
- Set up "Bill Pay"
- Add Rochelle Area Community Foundation"  
PO Box 74  
Rochelle, IL 61068
- If an account number is required, please contact our office at 815-561-3600 or email [director@rochellefoundation.org](mailto:director@rochellefoundation.org).
- Set up the monthly donation
- If you have a specific fund you wanted to support, please contact RACF prior to your first donation to establish the fund recipient.
- All gifts without an established fund recipient will go to the RACF Endowment Fund.

Should you have any questions, would like to set up your own fund, or have difficulties with the process please contact us and we will be happy to assist you in any way.

Thank you for being a supporter who truly cares for your community!



### 2025 BOARD OF DIRECTORS

PRESIDENT-Jeff Fiegenschuh  
VICE PRESIDENT-Kathleen Isley  
TREASURER-Debbie Howard  
SECRETARY-Tony Doyle

Terry Dickow  
Kim Ewald  
Dani Foster  
Kwami Gati  
Ashley Jackson  
Doug Jarvis  
Kara Kettleson  
Yazmin Nambo  
Trena Thompson

Emily Anaya-Executive Director  
Abby Dall-Administrative Assistant,  
Editor

Visit our website to learn more about our members. Do you have an interest in joining our board? We have several different committees where you could best use your skills and talents to make a difference in your community. Help us know more about you by filling out a questioner on our website to see if this could be a good fit for you.

**VISIT OUR WEBSITE FOR MORE INFO ABOUT THE FOUNDATION**

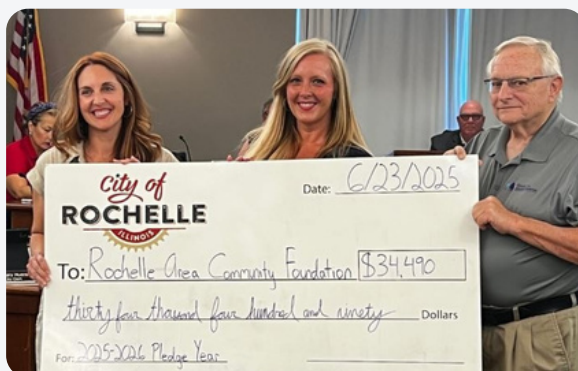




Mark your Calendars for this years  
#GIVINGTUESDAY!!

Tuesday, December 2, 2025

## City of Rochelle Employee Giving Campaign



### City of Rochelle Employees Lead the Way in Giving

We are thrilled to celebrate the incredible generosity of the City of Rochelle employees, who raised nearly \$35,000 through their workplace giving campaign! This outstanding achievement shows what it means to truly support where you work and live.

The City of Rochelle continues to be a standout leader in philanthropy within our community. Their ongoing partnership with the Rochelle Area Community Foundation makes a lasting difference, helping us strengthen programs and services that touch lives every day.

We are deeply grateful for their commitment and generosity—thank you to every City of Rochelle employee who gave back to ensure a brighter future for our community.

### UPCOMING

## Events

**Donut Drive Thru- October 14, 2:00-4:00pm**

**Nonprofit Partner Meeting, November 20 at 10:00am at Presbyterian Church**

**#GivingTuesday, Tuesday, December 2, all day**

**Light Up Lincoln Parade, Friday, December 5, 5:30pm**





# 20

## Ribbon Cutting

# YEAR



A 20 year celebration and ribbon cutting event was held at the RACF office on July 16th in partnership with the Rochelle Chamber of Commerce and catered by Ralfies BBQ. RACF's Executive Director; Emily Anaya said:

*"It's been a privilege to witness firsthand the generosity, collaboration and passion that make Rochelle such a special place. Our mission is simple but powerful: To improve lives right here in Rochelle and in our surrounding communities through philanthropy, leadership and partnerships. Today isn't about looking back over the past 20 years, it's about looking ahead to the future. The work we're doing now is laying the foundation for the next 20 years and beyond."*

RACF has awarded nearly \$1.4 million in grants to local nonprofits, schools, and community organizations. We are so thankful of the partnerships we have and the impact and involvement we have had in the community. Thank you all for your continued support!



## RACF Celebrates 20 Years with a Successful Golf Outing!

On Friday, August 29th, RACF hosted our special 20th Anniversary Golf Outing at Fairways Golf Course. While this was not a traditional annual event for us, the outing was a true celebration of philanthropy in our community. With 14 teams, nonprofit partners on the holes, and a fantastic lineup of sponsors, the day was filled with fun, connection, and purpose.

Thanks to the generosity of our sponsors, participants and volunteers, the outing was a resounding success! From our Master Sponsor, Burlington Junction Railway, to our Eagle, Birdie, Par, and Clubhouse Sponsors, every contribution helped ensure the outing made a lasting impact.

Golfers enjoyed a day of friendly competition, highlighted by contests for longest drive, closest to the pin, and a special raffle experience sponsored by RACF supporter Steve Hamilton and The Hamilton Collection, offering the chance to win an unforgettable hypercar driving experience.

Beyond the golf and camaraderie, the outing truly embodied the mission of RACF—supporting local nonprofits and keeping every dollar raised right here in our community. We are deeply grateful to everyone who played, sponsored, volunteered, or supported the event. Together, you helped us celebrate 20 years of giving back and strengthening the Rochelle area.

## RACF GOLF OUTING



THANK YOU  
TO OUR SPONSORS

MASTERS



THE TURN  
LUNCH

Rochelle Municipal Utilities

THE 19<sup>TH</sup> HOLE  
BEVERAGES

Maplehurst Farms, Inc.

### CLUBHOUSE

- Fairways Golf Course
- Jeff Perry Auto Group
- Luna
- The Hamilton Collection
- Village of Progress

### EAGLE

- Holcomb Bank
- Hormel: Rochelle Foods
- The Jacobs Family Fund
- Operose Advisors

### BIRDIE

- Americold

### PAR

- Stillman Bank





### BOOK RELEASE: MY LIFE FROM TYPICAL TO BLESSED

On June 25th, Mayor John Bearrows visited LUNA of Rochelle for the release of his book, "My Life from Typical to Blessed."

This inspiring memoir shares his life lessons, challenges, and how a positive attitude can turn trials into growth. 100% of proceeds benefit his new fund at RACF.

Copies are available at our office: 350 May Mart Drive.

*Congratulations*

**GOOD NEIGHBOR**

If you would like to nominate a resident of Ogle County for 'Good Neighbor of the Week' please contact the Rochelle Area Community Foundation at (815) 561-3600 or at [admin@rochellefoundation.org](mailto:admin@rochellefoundation.org)

## GOOD NEIGHBORS

### May:

Ed McBride, Dana Meyers,  
Doug Forsberg, Terry Dickow

### June:

Michelle Pease, Trisha  
Vaughn, Jessica Morris, Jenny  
Thompson, John Hintzsche

### July:

Pedro Anaya, Cass Headon,  
Ed Rice, Jillian Condon

### August:

Russ Crull, Jake Messer, Tim  
Hayden, Richard Ohlinger,  
Jennie McLaughlin

# Spotlights

## FUND SPOTLIGHT

### THE JOHN BEARROWS FAMILY ENDOWMENT IN MEMORY OF DENISE HALSEY MOORE



Our newest Fund here at RACF, established by Dina and John Bearrows and Family. This Fund honors the life and legacy of a remarkable woman whose passion for education and children was evident in everything she did.

Denise was a proud Rochelle native, graduating from Rochelle Township High School with the Class of 1995. Though she passed away far too soon at the age of 39, her memory lives on through this endowment.

Whether supporting youth programs, enhancing education, or helping children thrive, the Bearrows family will thoughtfully direct grants from this fund to where their hearts-and Denise's legacy-lead them.

This is more than a memorial. It is a continuation of Denise's purpose: helping children grow, learn and feel seen.





## MISSION

To offer those with a philanthropic heart a simple way to make a positive difference.

## PURPOSE

Be a vehicle for philanthropy and empower community nonprofits through donor stewardship.

## VISION

A generous, Vibrant, and sustainable community where a helping hand is always within reach.

## NON-PROFIT SPOTLIGHT



For more than four decades, HOPE of Ogle County has been a lifeline for individuals and families facing one of the hardest realities—domestic violence. When someone calls their 24-hour hotline, they're often taking the first brave step toward safety. On the other end of the line, HOPE staff and volunteers are ready with compassion, guidance, and resources to help.

From providing emergency shelter on a difficult night to walking alongside survivors through counseling, legal advocacy, and prevention education, HOPE is there every step of the way. Their work reminds us that healing and rebuilding a life after violence is possible, especially with a strong support system.

Recently, with the help of a grant from RACF, HOPE has been able to reach even more people in need. New brochures, newsletters, and outreach materials are making their services—and most importantly, their hotline—more visible across Ogle County. Every updated piece of information has the potential to connect someone in crisis with life-saving help.

But HOPE doesn't do this alone. Their strength comes from a community that believes in their mission. Whether it's volunteering time, donating items, adopting a family during the holidays, or even hosting a fundraiser, each act of support adds up to hope for survivors.



Have questions or want  
to get in touch?  
Call us at **815-562-4323**  
Message us on  
**Facebook**



# We are *Growing* because of you!

Thank you to our Donors  
May 1, 2025-August 31, 2025



Justin and Anna Adolph  
Americold  
Nick Anatra  
Nic and Emily Anaya  
Anonymous (47)  
Kristen Barco-Kida  
John and Dina Bearrows  
- Bearrows Real Estate  
James Bearrows  
Jeff Bearrows  
Diane Berg  
Brown's Tax Service  
Tyler and Brittany Carls  
Carmichael Family Fund  
-Community Foundation of  
Northern Illinois  
CCS Golf LLC  
Eric Cech  
Central Bank  
City of Rochelle  
Jillian Condon  
Charlene Coulombe  
Becky Cox  
Jacqueline Cruz  
Michael Dale  
Michael Daugherty  
Terry and Jacqueline Dickow  
Tony and Krista Doyle  
Jeff Fiegenschuh

Robert and Sarah Flanagan  
Diane Gildea  
Jeff and Michele Glen  
Michele Hardcastle  
Amy Hayden  
Curtis Helgren  
Bettie Helm  
Autumn Hernandez  
Holcomb Bank  
Hormel Foods Corp / Rochelle Foods  
Kevin and Deb Howard  
Michael Hudetz  
Rose Mary Hueramo  
Kim and Becky Huntley  
Ashley Jackson  
Cal Jacobs  
Sean Kessler  
LaCretia Konan  
Mr. Doug Kroupa  
Elizabeth Lovelady-Smith  
Maplehurst Farms  
Joseph F McKinney  
Glen Mehrings  
Archie Millotte  
Jeannette Mingus  
Mitch and Kim Montgomery  
Mary Jo Moreland

Mandi Morris  
Yazmin Nambo  
Michelle Pease  
Gary and Michelle Peterson  
Bart Pillen  
Laurie Pillen  
Kelly Polz  
Michael Ramsey  
Dwayne Rangel  
Nancy Reed  
Rochelle Snowmobile Club  
Andrew Rogde  
David Sawlsville  
Christy Seebach  
Jennifer Siebert  
Stillman Bank  
Jamey Sullivan  
Brandon Sveta  
Tim and Jennifer Thompson  
Blake Toliver  
Jason Underwood  
Shannon Underwood  
Regina Van Hise  
Ed and Lynn VanVickle  
Ryne and Alison Vrana  
Toni Weeks  
Danae White  
Brittney Zick



***\*Disclaimer\* We do our best to recognize every donor. If you feel we have accidentally missed your name, please contact our office at 1-815-561-3600.***