



## 2026 Board of Directors



Yazmin Nambo

President



Kathleen Isley

Vice President



Debbie Howard

Treasurer



Tony Doyle

Secretary



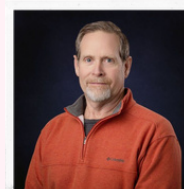
Ashley Jackson



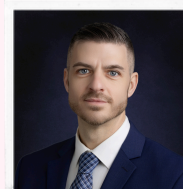
Blake Toliver



Trena Thompson



Doug Jarvis



Jake Albers



Kim Ewald



Maggie Craft



Kwami Gati



Kathy Yocum



Emily Anaya

Executive Director



Abby Dall

Administrative Assistant

## Here's How We're Growing

Meet our new Board Members  
Fund Spotlight/Good Neighbor  
Non-Profit Spotlight

Donor Spotlight  
Mission/Vision/Purpose  
January-March 2026 Donor List



**2026 BOARD OF DIRECTORS**

- PRESIDENT-Yazmin Nambo
- VICE PRESIDENT-Kathleen Isley
- TREASURER-Debbie Howard
- SECRETARY-Tony Doyle
- Ashley Jackson
- Doug Jarvis
- Jake Albers
- Kathy Yocum
- Trena Thompson
- Blake Toliver
- Kim Ewald
- Maggie Craft
- Kwami Gati
- Emily Anaya-Executive Director
- Abby Dall-Administrative Assistant, Editor

**Giving Made Easy**

Rochelle Area Community Foundation (RACF) makes it easy to give. Many donors give generously through monthly donations to RACF. There are two ways to set up a recurring gift.

**Give through our website**

[rochellefoundation.org](http://rochellefoundation.org)

- Click "Donate"
- Choose a Fund you want to support
- Click "Donate" under the appropriate fund
- Click "Make this a monthly donation"
- Fill out the secure information via PayPal
- Now your gift will be successfully sent each month to that fund

**Give through Online Banking**

- Go online to your bank account
  - Login to your account
  - Set up "Bill Pay"
  - Add Rochelle Area Community Foundation"
    - PO Box 74
    - Rochelle, IL 61068
  - If an account number is required, please contact our office at 815-561-3600 or email [director@rochellefoundation.org](mailto:director@rochellefoundation.org).
  - Set up the monthly donation
  - If you have a specific fund you wanted to support, please contact RACF prior to your first donation to establish the fund recipient.
  - All gifts without an established fund recipient will go to the RACF Endowment Fund.
- Should you have any questions, would like to set up your own fund, or have difficulties with the process please contact us and we will be happy to assist you in any way.

Thank you for being a supporter who truly cares for your community!



**Emily Anaya**

Every gift to the Rochelle Area Community Foundation tells a story of trust, hope, and impact. Those stories are being written every day because of donors like you. Your generosity continues to make a direct and lasting impact across Rochelle and the surrounding communities. Through your support, we are able to invest in local nonprofits and initiatives that address the greatest needs and create meaningful change where it matters most.

I invite you to join us for our FREE 2026 Granting Futures event on Wednesday, April 29th from 4-7 PM at the Lincoln Arts Center, where we will distribute essential donor dollars to high-impact community organizations. It is always a powerful reminder of what is possible when our community comes together.

We are grateful for donors like you who make this work possible and allow us the privilege of giving locally in such a meaningful way.

Together, we will continue to grow and give in ways that strengthen our community for the future.

*Emily Anaya*



Visit our website to learn more about our members. Do you have an interest in joining our board? We have several different committees where you could best use your skills and talents to make a difference in your community. Help us know more about you by filling out a questionnaire on our website to see if this could be a good fit for you.

**VISIT OUR WEBSITE FOR MORE INFO ABOUT THE FOUNDATION**

# MEET OUR NEW BOARD MEMBERS



Maggie Craft

"I chose to join the RACF Board because I believe strong communities are built through collaboration, compassion, and shared purpose. Giving back to a place that has given so much to me is truly meaningful. I'm honored to support initiatives that enhance quality of life in Rochelle and to work alongside others who are committed to creating lasting, positive impact."

*~Maggie Craft*

"I chose to join the RACF Board because this community is important to me, and I wanted to play a small role in giving back. Supporting programs that help people feel supported, connected, and able to thrive is something I care deeply about. I'm thankful for the opportunity to learn more about the needs in our area and to contribute to work that makes a real difference."



Jake Albers

*~Jake Albers*

# MEET OUR NEW BOARD MEMBERS

"I chose to join the RACF Board because I value being active in the community and working alongside others who care deeply about making a difference. Building relationships and staying connected to the people and organizations that strengthen Rochelle is important to me. I'm grateful for the opportunity to support the Foundation's work and to help foster a community where everyone feels engaged, supported, and empowered."



Kathy Yocum

*~Kathy Yocum~*

"I recently joined the Rochelle Area Community Foundation board because I believe in investing locally and strengthening the community we all call home. In my role serving Rochelle, I see every day how important it is to think long-term – whether it's infrastructure, economic development, or supporting families and businesses. The Foundation plays a critical role in that same long-term vision by connecting generosity with real impact right here in our area. I'm proud to be part of an organization that is focused on stewardship, accountability, and making a lasting difference for Rochelle's future."



Blake Toliver

*~Blake Toliver~*



Donor Spotlight  
**WHEATLAND TUBE LLC**



*“WHEATLAND TUBE’S \$25,000 ANNUAL DONATION IS A MEANINGFUL INVESTMENT IN ROCHELLE’S FUTURE, AND WE ARE PROUD TO PARTNER WITH AN ORGANIZATION THAT TRULY BELIEVES IN THE STRENGTH OF OUR COMMUNITY.”*

*~EMILY ANAYA*

**IF YOU WOULD LIKE TO PARTNER WITH THE ROCHELLE AREA COMMUNITY FOUNDATION, WE INVITE YOU TO CONNECT WITH US. PLEASE CONTACT OUR OFFICE AT 815-561-3600 TO START THE CONVERSATION, OR BEGIN EXPLORING HOW YOU CAN MAKE AN IMPACT IN OUR COMMUNITY. TOGETHER, WE CAN TURN YOUR PASSION FOR GIVING INTO LASTING CHANGE.**

**Celebrating Community Partnership:  
Wheatland Tube \$25,000 Annual Donation**

The Rochelle Area Community Foundation is proud to recognize and thank Wheatland Tube/Zekelman Industries for their continued generosity and commitment to our community. Their ongoing support reflects a deep investment in the people and organizations that make the Rochelle area a stronger, more vibrant place to live and work.

Through their partnership with RACF, Wheatland Tube is helping to ensure that vital resources reach local nonprofits, schools, and community initiatives that address real needs and create lasting impact. Their dedication goes beyond a single gift—it represents a shared belief in building a better future for our community.

We are grateful for partners like Wheatland Tube who lead by example and demonstrate the power of local philanthropy. Together, we are able to support meaningful programs, strengthen connections, and continue growing opportunities right here at home.

Thank you, Wheatland Tube, for your continued support and for being an important part of the work we do every day.





## Chamber Annual Dinner



We are grateful to have such a caring and committed partner in our community as the Rochelle Area Chamber of Commerce.

Despite the challenging weather, the evening was a wonderful success—filled with inspiring moments and recognition of truly incredible recipients.

Thank you for your continued partnership and for all you do to help strengthen and support our community.

# Spotlights

FUND SPOTLIGHT

## RCH FOUNDATION COMMUNITY CANCER RESOURCE FUND



### A Powerful Partnership for Community Impact

The Rochelle Area Community Foundation (RACF) is proud to announce the creation of the Community Cancer Resources Fund, established in partnership with the Rochelle Community Hospital Foundation.

This newly established endowment fund is designed to provide ongoing, sustainable support for cancer-related programs and patient resources right here in our community. Through this collaboration, individuals and families facing cancer will have access to critical support—both now and for generations to come.

The announcement was made during a press conference held at Rochelle Community Hospital, where community leaders, board members, and local media gathered to celebrate this meaningful milestone. The event highlighted the strength of partnership between RACF and the RCH Foundation and the shared commitment to improving the lives of those impacted by cancer.



# Congratulations

## GOOD NEIGHBOR

If you would like to nominate a resident of Ogle County for 'Good Neighbor of the Week' please contact the Rochelle Area Community Foundation at (815) 561-3600 or at [admin@rochellefoundation.org](mailto:admin@rochellefoundation.org)

## GOOD NEIGHBORS

### January:

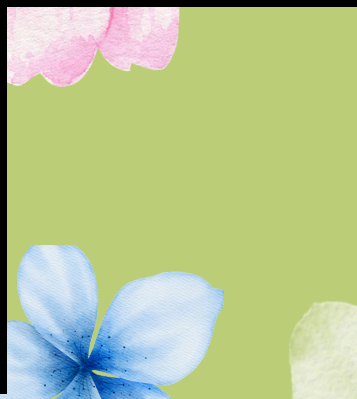
Michele Peterson, Wendy Gilbert, Roman Villalobos, Donielle Anderson

### March:

Ben Dougherty, Taylor Bigelow, Mark Price, Sephanie Messer, Chris Haas,

### February:

Sheryl Casey, Jan Kissick, Brandon Sveta, Trisha Rodeghero



Thanks to this endowed structure, every gift to the Community Cancer Resources Fund will be invested for long-term growth, ensuring that support continues year after year. It's a lasting way for donors to make a difference and create a legacy of care within the Rochelle area.

We are incredibly grateful for the collaboration with the Rochelle Community Hospital Foundation and for the strong show of support from our community. Together, we are building something that will have a lasting and meaningful impact on the lives of our neighbors.

**To learn more or to make a gift, visit [rochellefoundation.org](http://rochellefoundation.org).**

## UPCOMING Events

- **Granting Futures: A community Open House:** April 29, 2026 4-7 p.m. at Lincoln Arts Center - 108 South Main Street, Rochelle, IL 61068
- **Nonprofit Partner Meeting:** Thursday, May 21, 2026 at 10:00 a.m. Presbyterian Church - 1100 Calvin Road, Rochelle, IL 61068

## MISSION

To offer those with a philanthropic heart a simple way to make a positive difference.

## PURPOSE

Be a vehicle for philanthropy and empower community nonprofits through donor stewardship.

## VISION

A generous, Vibrant, and sustainable community where a helping hand is always within reach.

## NON-PROFIT SPOTLIGHT



The Creston-Dement Public Library is a vital community resource, providing free access to information, education, and materials for all ages. More than a traditional library, it serves as a welcoming and inclusive space that fosters lifelong learning, connection, and personal growth. Guided by its mission to provide access to ideas, information, experiences, and materials that enrich lives, the library plays an important role in supporting the community.

The library recently applied for grant funding to enhance its Summer Reading Program. With this support, it plans to expand its schedule of weekly and special events, offering more opportunities for both children and adults to stay engaged, build reading habits, and participate in enriching activities throughout the summer.

Community members are encouraged to visit the library to experience all it has to offer. They can also stay connected by following the library on Facebook or visiting its website for updates, programs, and events. The library's brand new, fully ADA accessible facility ensures that all individuals can comfortably access and enjoy its resources and services.



# We are *Growing* because of you!

Thank you to our Donors  
January 1, 2026-March 31, 2026

- Justin and Anna Adolph
- Anonymous (144)
- Diane Berg
- Tyler and Brittany Carls
- Eric Cech
- Jillian Condon
- Jacqueline Cruz
- Crest FoodsCo., Inc
- Michael Dale
- Michael Daugherty
- Terry and Jacqueline Dickow
- Tony and Krista Doyle
- Jeff Fiegenschuh
- Jeff and Michele Glen
- Amy Hayden
- Curtis Helgren
- Autumn Hernandez
- Michael Hudetz
- Rose Mary Hueramo
- Sean Kessler
- Mr. Doug Kroupa
- Elizabeth Lovelady-Smith
- Joseph F McKinney
- Glen Mehrings
- Yazmin Nambo
- Michelle Pease
- Jeff Perry INC
- Kelly Polz
- Paul and Jane Quitno
- Rochelle Elementary School
- District #231
- Rochelle Veterinary Hospital
- Rochelle Community Hospital
- Association
- Donald Romes
- Joe Rice
- Dwayne Rangel
- David Sawlsville
- Kim Salsbury
- Serenity Hospice and Home
- Jennifer Siebert
- Jamey Sullivan
- Tim and Jennifer Thompson
- Pamela Tobler
- Blake Toliver
- Ryne and Alison Vrana
- Tootie Vogeler
- Weatland Tube, LLC
- Danae White
- Christene Willis

*\*Disclaimer\* We do our best to recognize every donor. If you feel we have accidentally missed your name, please contact our office at 1-815-561-3600.*